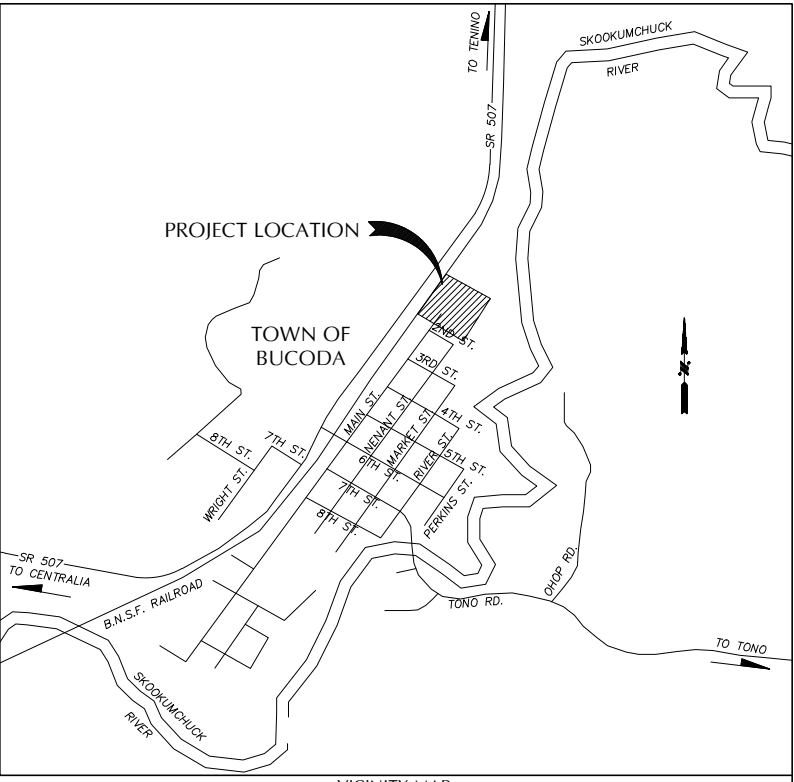
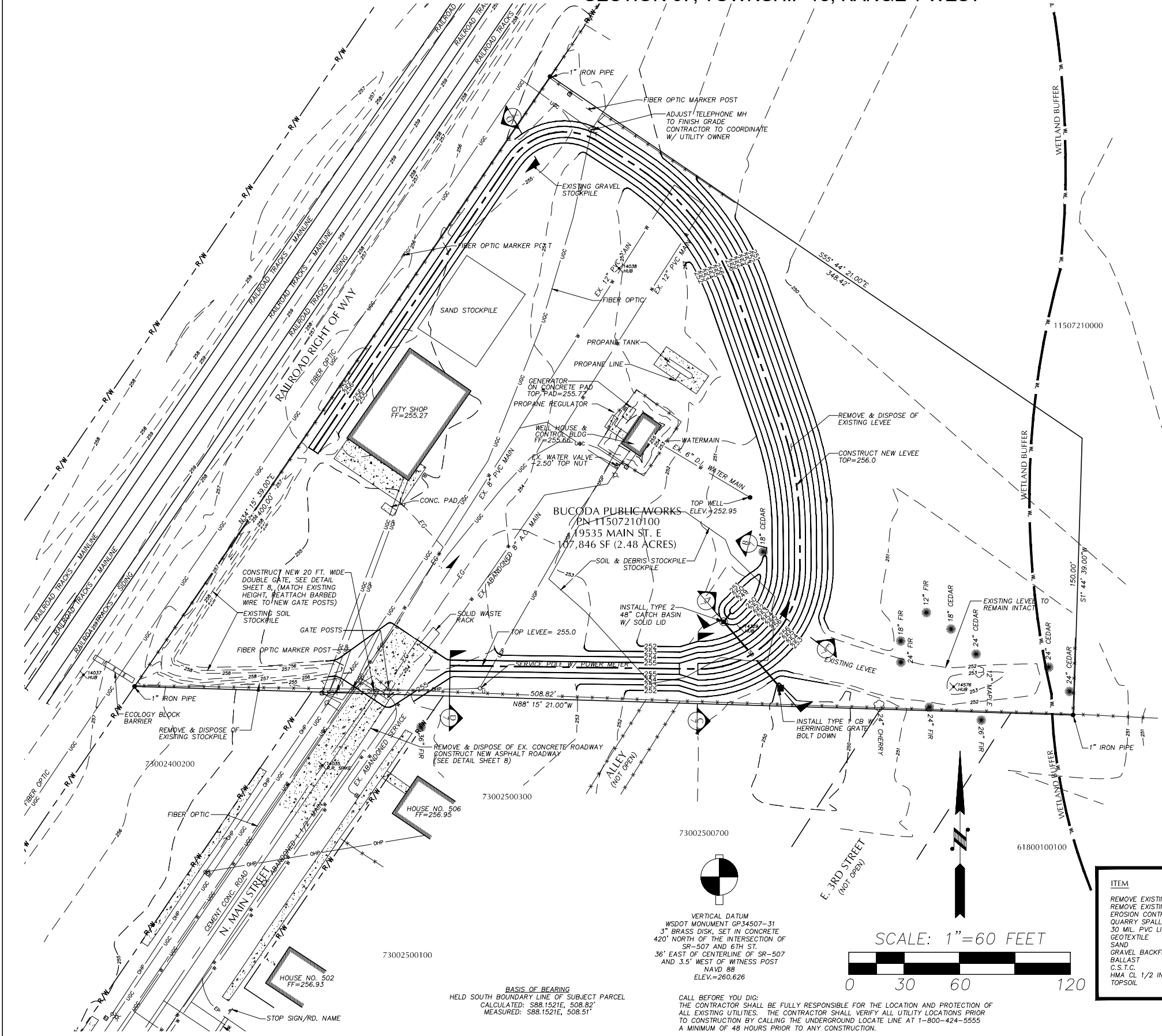


SECTION 07, TOWNSHIP 15, RANGE 1 WEST



- LEGEND**
- FIRE HYDRANT
 - WATER VALVE
 - WATER METER
 - WELL HEAD
 - DECIDUOUS TREE
 - CONIFER TREE
 - POWER POLE
 - POWER POLE WITH LUMINAIRE
 - GUY ANCHOR
 - TELEPHONE PEDESTAL
 - TELEPHONE MANHOLE
 - STREET SIGN
 - PROPERTY MARKER (AS NOTED)
 - MONUMENT
 - RAILROAD SPIKE OR HUB (LOCAL PROJECT CONTROL)
 - WATER LINE
 - FENCE
 - OHP OVERHEAD POWER
 - UGP UNDERGROUND POWER
 - EDGE OF GRAVEL
 - UGC UNDERGROUND COMMUNICATION
 - FLOWLINE
- PROPOSED**
- CATCH BASIN (TYPE 2)
 - CATCH BASIN (TYPE 1)
 - STORM DRAIN
 - LEVEE CENTERLINE
 - DETAIL / SECTION REFERENCE
 - PLAN OR DETAIL PAGE REFERENCE
 - WETLAND BUFFER

ITEM	QUANTITY	UNITS
REMOVE EXISTING LEVEE MATERIAL	1000	C.Y.
REMOVE EXISTING CONCRETE ROADWAY	180	S.Y.
EROSION CONTROL	1	L.S.
QUARRY SPALLS	153	C.Y.
30 MIL. PVC LINER	7000	S.F.
GEOTEXTILE	7000	S.F.
SAND	41	C.Y.
GRAVEL BACKFILL FOR WALLS (LEVEE MATERIAL)	1441	C.Y.
BALLAST	100	C.Y.
C.S.T.C.	17	C.Y.
HMA CL 1/2 IN. PG 64-22	70	TON
TOPSOIL	176	C.Y.

100% PLANS



NO	DATE	BY	APPR	REVISIONS

JWM&A Civil • Municipal • Geotechnical • Land Surveying
Jerome W. Morrisette & Associates Inc., P.S.
1700 Cooper Pt. Road S.W. #B-2, Olympia, Wa. 98502-1110 Ph 360.352.9456 Fx 360.352.9990

Approved By _____

S.S. _____ 05-16-13
DESIGNED BY _____ DATE
J.N., R.W. _____ 05-16-13
C.A.D.D. BY _____ DATE
T.J.L. _____ 05-16-13
CHECKED BY _____ DATE

Town of
Bucoda

**TOWN OF BUCODA LEVEE PROJECT
SITE PLAN**