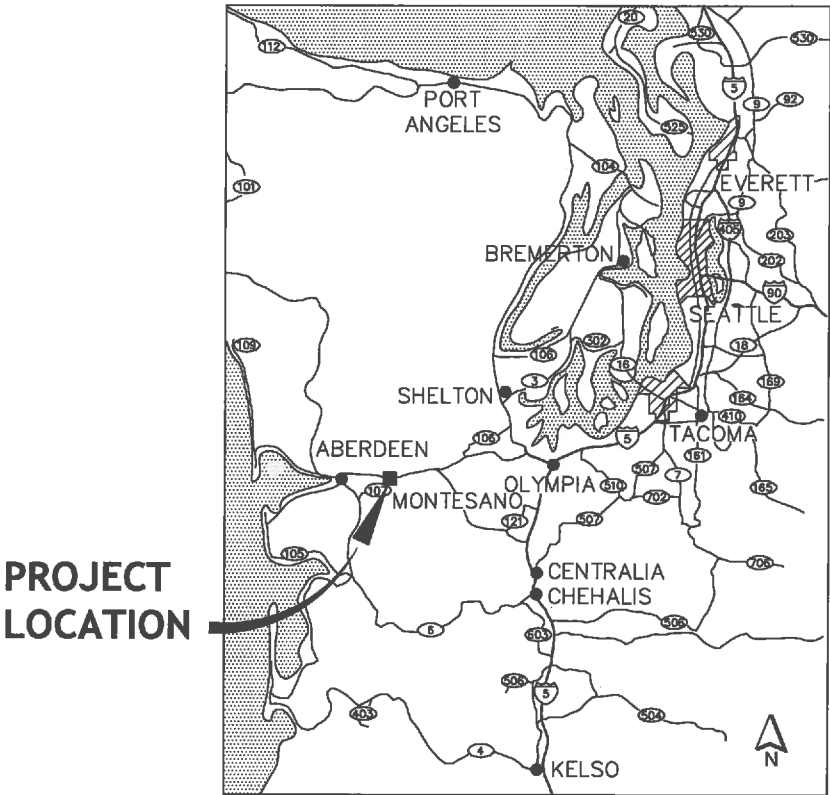
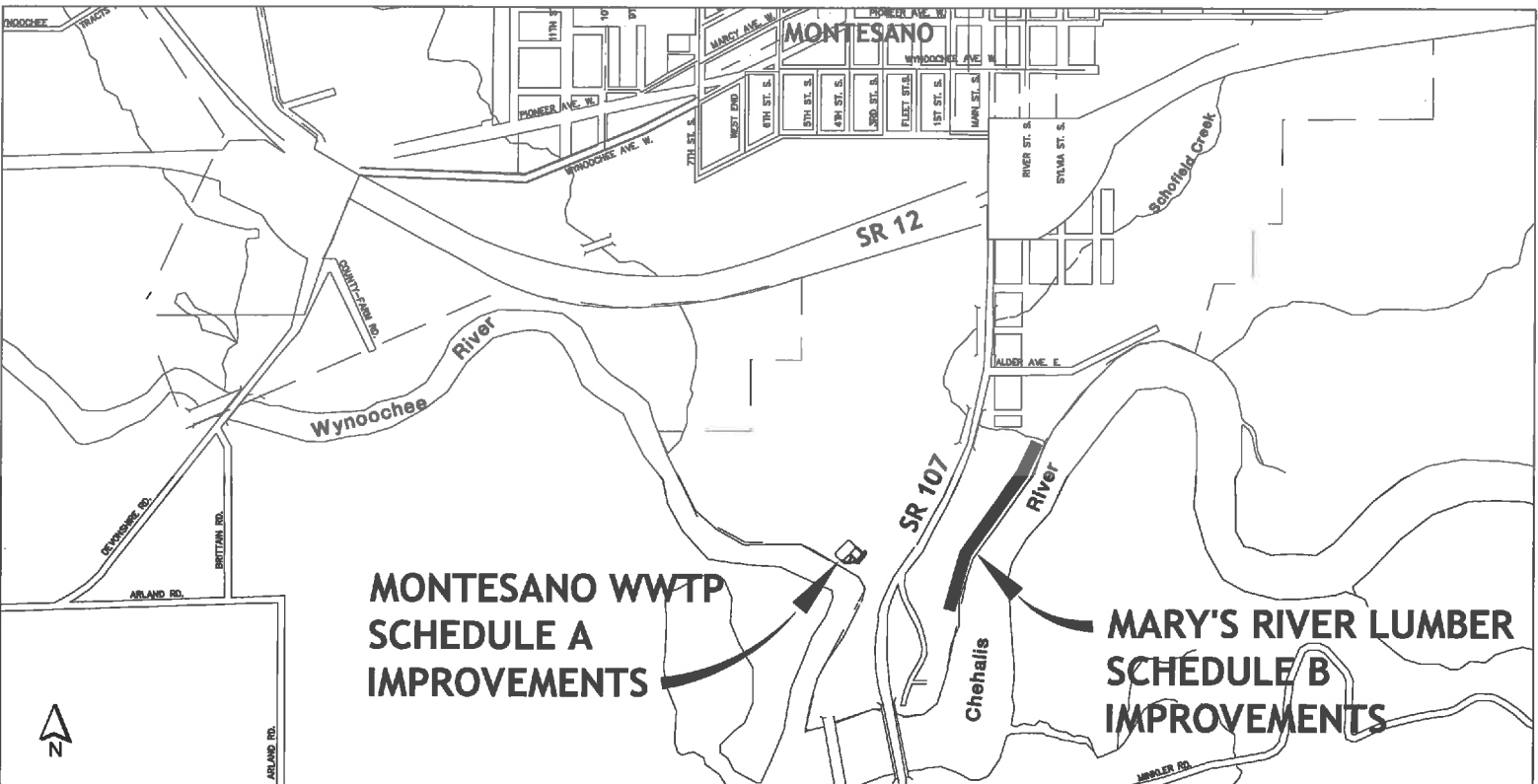


# CITY OF MONTESANO

## MARY'S RIVER LUMBER AND MONTESANO WWTP BANK STABILIZATION



VICINITY MAP



LOCATION MAP

DRAWING INDEX		
DWG NO.	SHT NO.	SHEET TITLE
1	G1	VICINITY AND LOCATION MAPS, AND DRAWING INDEX
2	G2	GENERAL NOTES, LEGEND, AND ABBREVIATIONS
3	SC1	SCHEDULES A AND B SURVEY CONTROL PLAN
4	C1	SCHEDULE A SHEET PILE WALL ALIGNMENT
5	C2	SCHEDULE A SECTIONS AND DETAILS
6	C3	SCHEDULE B SHEET PILE WALL STA 10+00 TO STA 15+50
7	C4	SCHEDULE B SHEET PILE WALL STA 15+50 TO STA 21+00
8	C5	SCHEDULE B SHEET PILE WALL STA 21+00 TO STA 25+50
9	C6	SCHEDULE B SECTIONS AND DETAILS
10	C7	SCHEDULES A AND B SECTIONS AND DETAILS
11	C8	SCHEDULE B OVERHEAD LOG DECK AND STRUCTURE REMOVAL LIMITS
12	C9	SCHEDULE B OVERHEAD LOG DECK AND STRUCTURE VIEWS

PATH: U:\PSO\Projects\Clients\1678-CityOfMontesano\217-1678-042 Mary's River Lumber Bank Stabilization\995\cadd\dwg\ LAYOUT: G1 PLOTTED BY: taylor DATE: Wednesday, November 13, 2013 11:48:46 AM

REVISIONS	DATE	BY	DESIGNED
			K. TAYLOR
			DRAWN
			K. TAYLOR
			CHECKED
			APPROVED

ONE INCH AT FULL SCALE. IF NOT, SCALE ACCORDINGLY
FILE NAME PS1678042-G1
JOB NO. 217-1678-042
DATE NOVEMBER 2013



**Parametrix**  
ENGINEERING . PLANNING . ENVIRONMENTAL SCIENCES

1019 38TH AVENUE SE, SUITE 100  
PUYALLUP, WASHINGTON 98374  
T: 253.804.8000 F: 253.804.8799  
www.parametrix.com

PROJECT NAME

MARY'S RIVER LUMBER AND  
MONTESANO WWTP BANK STABILIZATION

MONTESANO, WASHINGTON

VICINITY AND LOCATION MAPS,  
AND DRAWING INDEX

DRAWING NO.  
1 OF 12

G1

LAYOUT: G2      PATH: U:\P50\Projects\Clients\1678-cl\Montesano\217-1678-042 MarysRvWWTPBankStabil\995.sca\CAAD\DWG\      PLOTTED BY: toy\dat      DATE: Wednesday, November 13, 2013 3:07:17 PM

LEGEND

EXISTING

MAIN CONTOUR	
INTERMEDIATE CONTOUR	
OHWM LINE	
WOOD FENCE	
CHAINLINK FENCE	
CONCRETE	
PAVEMENT	
SANITARY SEWER	
WATER	
STORM DRAINAGE	
CATCH BASIN	

PROPOSED

SHEET PILE WALL ALIGNMENT	
WOOD FENCE	
INLET PROTECTION	

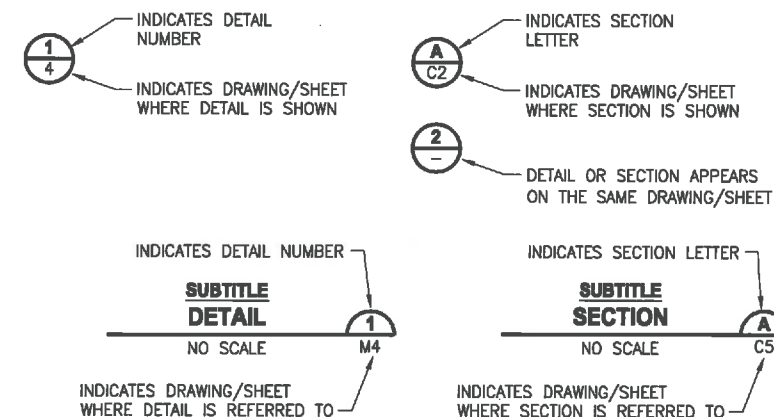
ABBREVIATIONS

@	AT
BP	BEGINNING POINT
CL	CLASS
CONC	CONCRETE
CPLG	COUPLING
CSTC	CRUSHED SURFACING TOP COURSE
Δ	DELTA
DET	DETAIL
DI	DUCTILE IRON
E	EAST, EASTING
EA	EACH
EL	ELEVATION
EP	ENDING POINT
EXIST	EXISTING
FT	FEET, FOOT
HMAC	HOT MIX ASPHALT
HORIZ	HORIZONTAL
ID	INSIDE DIAMETER
L	LENGTH, LONG
MAX	MAXIMUM
MIN	MINIMUM
MJ	MECHANICAL JOINT
N	NORTH, NORTHING
NAD	NORTH AMERICAN DATUM
NAVD	NORTH AMERICAN VERTICAL DATUM
NO.	NUMBER
OHWM	ORDINARY HIGH WATER MARK
PC	POINT OF CURVATURE
PI	POINT OF INTERSECTION
PT	POINT OF TANGENCY
R	RADIUS
REQ'D	REQUIRED
SECT	SECTION
SHT	SHEET
SIM	SIMILAR
SPEC	SPECIFICATION
SR	STATE ROUTE
STA	STATION
STD	STANDARD
T&B	TOP AND BOTTOM
TOS	TOP OF STEEL
TYP	TYPICAL
VERT	VERTICAL
W/	WITH
WSDOT	WASHINGTON STATE DEPARTMENT OF TRANSPORTATION
WWTP	WASTEWATER TREATMENT PLANT
YR	YEAR

TESC GENERAL NOTES

1. THE CONTRACTOR IS RESPONSIBLE FOR ALL TESC MEASURES AS IDENTIFIED IN THESE PLANS. ADDITIONAL MEASURES SHALL BE IMPLEMENTED AS NEEDED TO ACCOMMODATE CHANGING WEATHER CONDITION, AS WARRANTED BY CONSTRUCTION METHODS, OR AS REQUIRED PER THE DIRECTION OF THE CITY OR TESC SUPERVISOR. ALL COST FOR TESC MEASURES SHALL BE INCLUDED IN LUMP SUM BID ITEM, EROSION & SEDIMENT CONTROL.
2. THE IMPLEMENTATION OF THESE TESC PLANS AND THE CONSTRUCTION, MAINTENANCE, REPLACEMENT, AND UPGRADING OF THE TESC MEASURES IS THE RESPONSIBILITY OF THE CONTRACTOR.
3. NO STORMWATER OR CONSTRUCTION DEBRIS SHALL BE ALLOWED BY THE CONTRACTOR TO ENTER THE RIVER OR ADJACENT VEGETATION. ALL COST ASSOCIATED WITH THIS WORK SHALL BE INCLUDED IN THE LUMP SUM BID ITEM, EROSION & SEDIMENT CONTROL.
4. THE BOUNDARIES OF THE CLEARING LIMITS ARE DEFINED BY THE PROPOSED/EXISTING ROW UNLESS SHOWN OTHERWISE. DURING THE CONSTRUCTION PERIOD, NO DISTURBANCE BEYOND THE CLEARING LIMITS SHALL BE PERMITTED. THE CLEARING LIMITS SHALL BE MAINTAINED BY THE CONTRACTOR/TESC SUPERVISOR FOR THE DURATION OF CONSTRUCTION.
5. ALL STORM SEWER STRUCTURES AND OUTFALLS SHALL BE PROTECTED & MAINTAINED WITH A CATCH BASIN INSERT UNTIL PROJECT COMPLETION.

DETAIL AND SECTION DESIGNATION



**Parametrix**  
ENGINEERING • PLANNING • ENVIRONMENTAL SCIENCES

1010 39TH AVENUE SE, SUITE 100  
PUYALLUP, WASHINGTON 98374  
T. 253.804.6000 F. 253.804.6799  
www.parametrix.com

PROJECT NAME

**MARY'S RIVER LUMBER AND  
MONTESANO WWTP BANK STABILIZATION**

MONTESANO, WASHINGTON

**GENERAL NOTES, LEGEND AND  
ABBREVIATIONS**

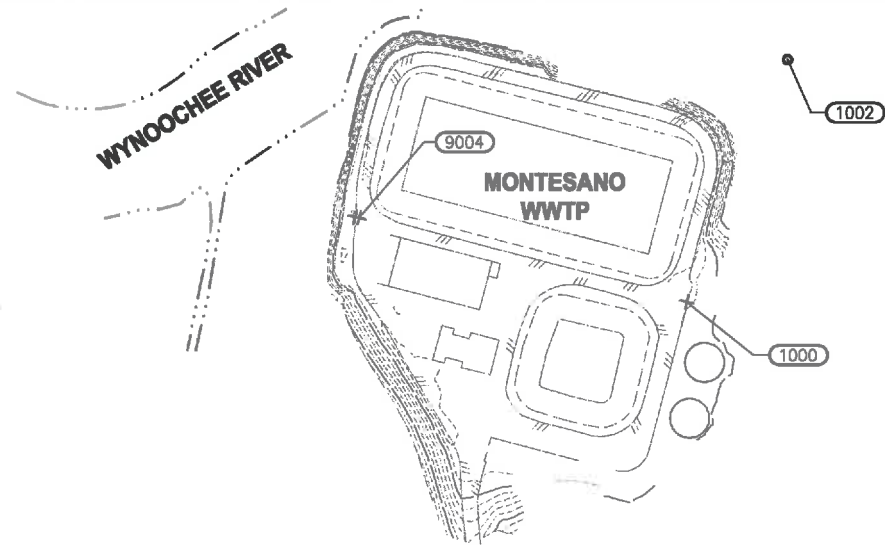
DRAWING NO.  
2 OF 12

**G2**

REVISIONS	DATE	BY	DESIGNED K. TAYLOR
			DRAWN K. TAYLOR
			CHECKED
			APPROVED

ONE INCH AT FULL SCALE, IF NOT, SCALE ACCORDINGLY
FILE NAME PS1678042-G1
JOB No. 217-1678-042
DATE NOVEMBER 2013

LAYOUT: SC1  
PATH: U:\PSO\Projects\Clients\1678-CityOfMontesano\217-1678-042 MarysRvWWTPBankStabal\985\cadd\CA00.DWG  
PLOTTER BY: tayokat  
DATE: Wednesday, November 13, 2013 11:28:50 AM

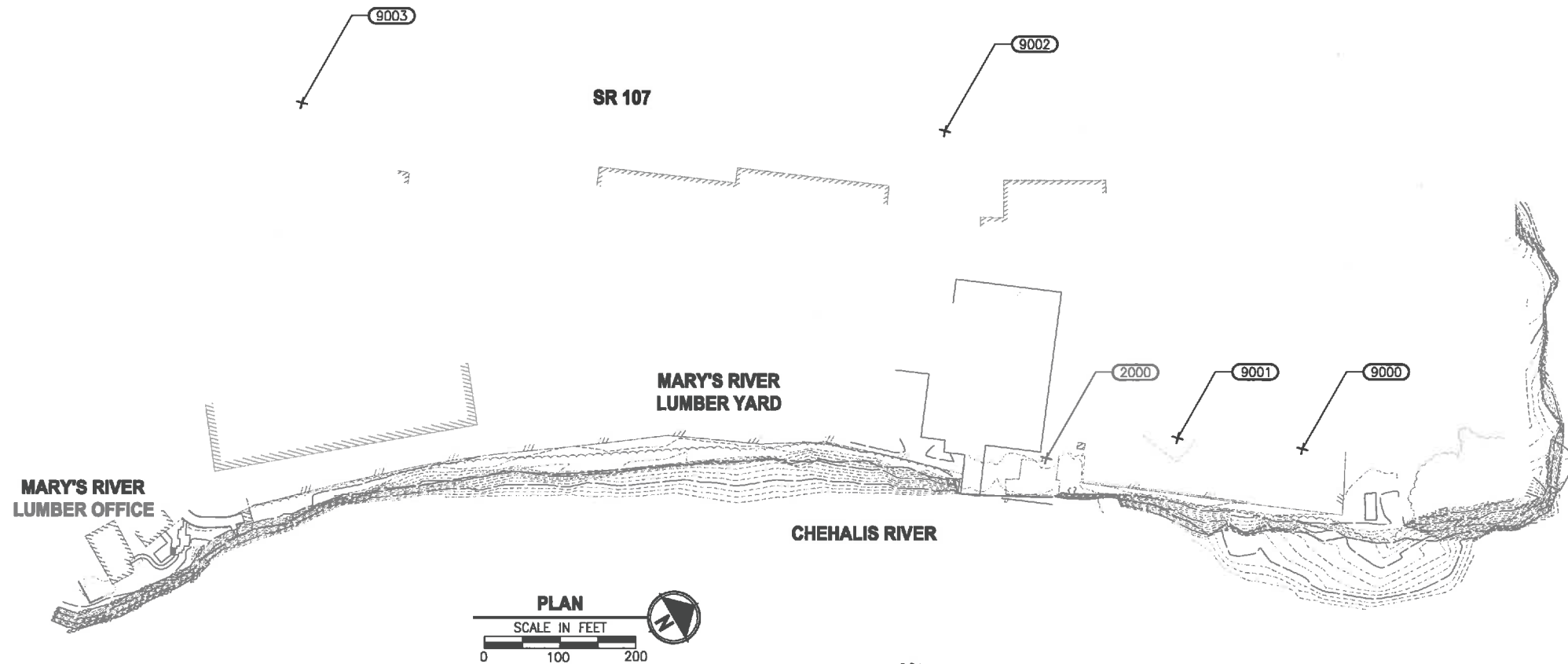


DATUM:  
HORIZONTAL:  
NAD 83/91 WASHINGTON STATE PLANE COORDINATE SYSTEM, SOUTH ZONE

VERTICAL:  
NAVD 88

WASHINGTON STATE DEPARTMENT OF TRANSPORTATION MONUMENT ID NO. 5723,  
ALUMINUM SURVEY CAP WITH 1 1/4" IRON PIPE  
WASHINGTON STATE DEPARTMENT OF TRANSPORTATION MONUMENT ID NO. 4126,  
UOCO BRASS DISK SET IN THE TOP OF A CONCRETE MONUMENT  
WASHINGTON STATE DEPARTMENT OF TRANSPORTATION MONUMENT ID NO. 4559,  
WSDOT BRASS DISK CEMENTED INTO A DRILL HOLE ON BRIDGE DECK SURFACE

SURVEY CONTROL				
NO	NORTHING	EASTING	ELEV	DESCRIPTION
1000	611450.72	865071.67	21.30	PARAMETRIX SURVEY CONTROL
1002	611668.24	864907.02	9.59	PARAMETRIX SURVEY CONTROL
2000	611379.86	866507.21	16.31	PARAMETRIX SURVEY CONTROL
9000	611678.79	866668.41	17.12	PARAMETRIX SURVEY CONTROL
9001	611544.08	866572.78	18.09	PARAMETRIX SURVEY CONTROL
9002	611484.06	866063.03	18.84	PARAMETRIX SURVEY CONTROL
9003	610768.39	865598.78	21.50	PARAMETRIX SURVEY CONTROL
9004	611201.84	864823.22	21.76	PARAMETRIX SURVEY CONTROL



REVISIONS	DATE	BY	DESIGNED
			R. HERMES
			DRAWN
			K. TAYLOR
			CHECKED
			APPROVED

ONE INCH AT FULL SCALE, IF NOT, SCALE ACCORDINGLY
FILE NAME
PS1678042-SC1
JOB No.
217-1678-042
DATE
NOVEMBER 2013



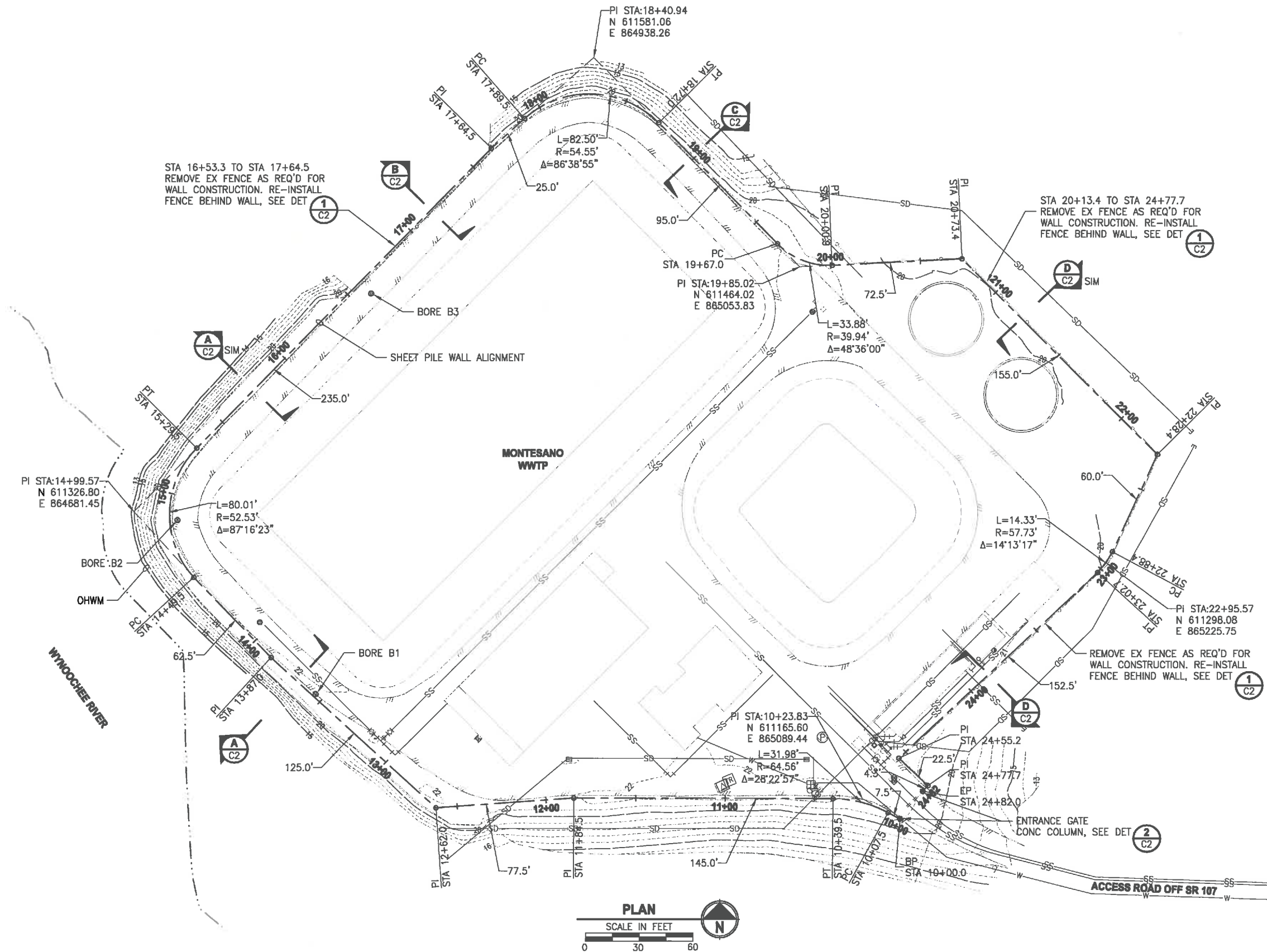
<b>Parametrix</b>	1010 30TH AVENUE SE, SUITE 100 PUYALLUP, WASHINGTON 98374 T. 253.604.6800 F. 253.604.5799 www.parametrix.com
ENGINEERING • PLANNING • ENVIRONMENTAL SCIENCES	

PROJECT NAME
MARY'S RIVER LUMBER AND MONTESANO WWTP BANK STABILIZATION
MONTESANO, WASHINGTON

SCHEDULES A AND B SURVEY CONTROL PLAN
--

DRAWING NO. 3 OF 12
SC1

LAYOUT: Sch A - C1  
PATH: U:\PSO\Projects\Clients\1878-City of Montesano\217-1878-042 Mary's River WWTP Bank Stabil\985vea CAD\DWG\ PLOTTED BY: tojokat DATE: Wednesday, November 13, 2013 11:23:53 AM



WWTP ALIGNMENT		
STATION	NORTHING	EASTING
STA 10+00.0	611154.34	865110.43
STA 10+07.5	611157.80	865103.77
STA 14+49.5	611289.86	864715.26
STA 10+39.5	611165.65	865073.11
STA 15+29.5	611362.35	864716.74
STA 11+84.5	611165.95	864928.11
STA 17+64.5	611530.33	864881.07
STA 12+62.0	611160.42	864850.81
STA 13+87.0	611244.88	864758.65
STA 17+89.5	611547.00	864899.70
STA 18+72.0	611544.56	864974.52
STA 19+67.0	611476.98	865041.29
STA 20+00.9	611464.85	865071.85
STA 20+73.4	611468.52	865144.25
STA 22+88.4	611304.42	865229.15
STA 23+02.7	611292.76	865220.89
STA 24+55.2	611188.40	865109.68
STA 22+28.4	611359.04	865253.98
STA 24+77.7	611172.96	865126.05
STA 24+82.0	611169.77	865123.15

REVISIONS	DATE	BY	DESIGNED
			R. HERMES
			DRAWN
			K. TAYLOR
			CHECKED
			APPROVED

ONE INCH AT FULL SCALE. IF NOT, SCALE ACCORDINGLY
FILE NAME
PS1678042-C1
JOB No.
217-1878-042
DATE
NOVEMBER 2013



**Parametrix**  
ENGINEERING • PLANNING • ENVIRONMENTAL SCIENCES  
10110 39TH AVENUE SE, SUITE 100  
PUYALLUP, WASHINGTON 98374  
T. 253.604.6600 F. 253.604.6766  
www.parametrix.com

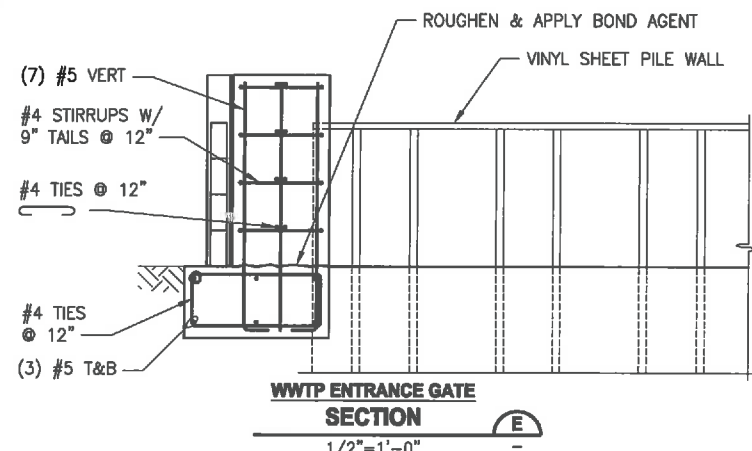
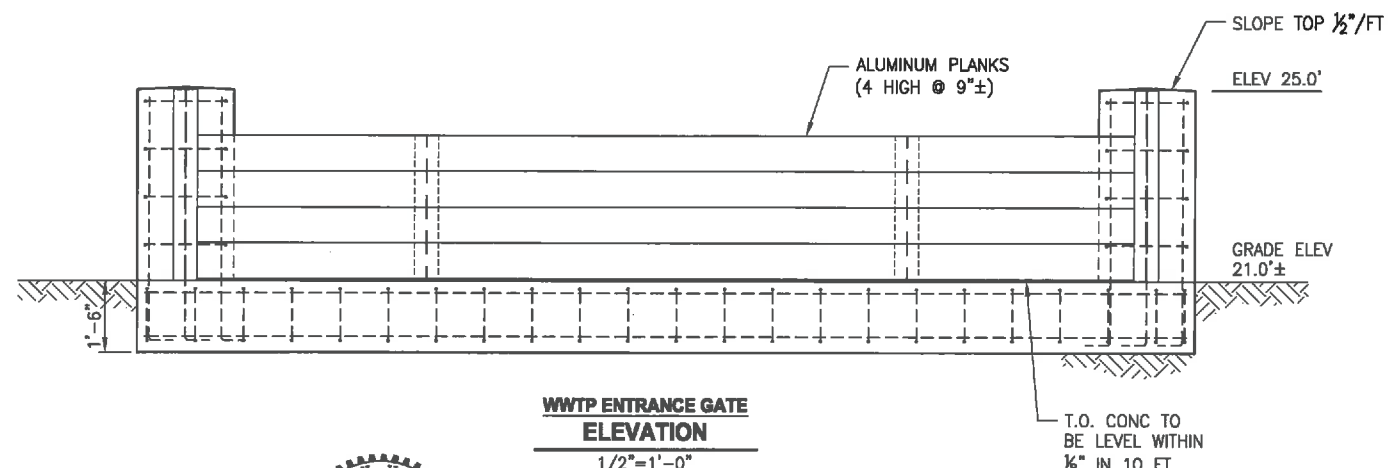
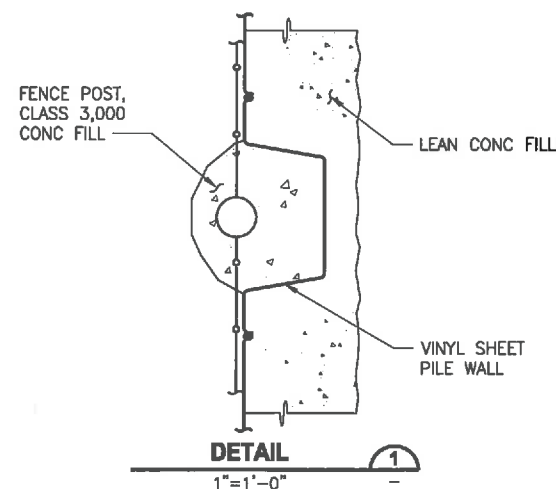
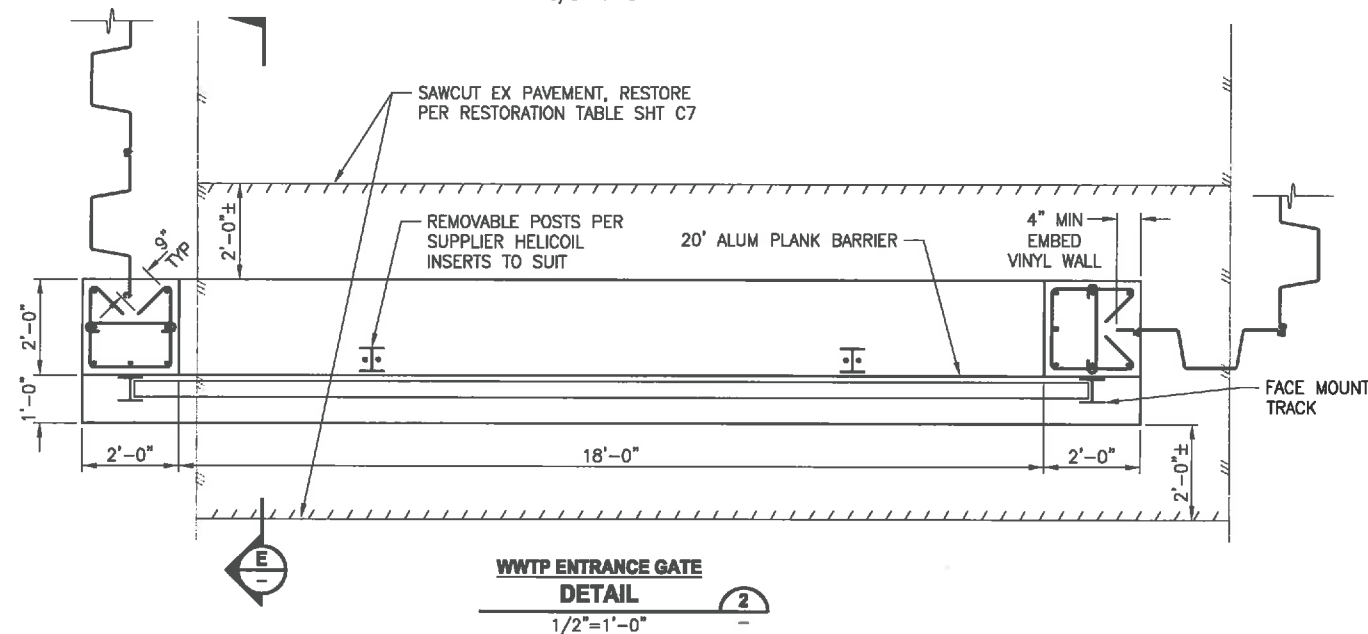
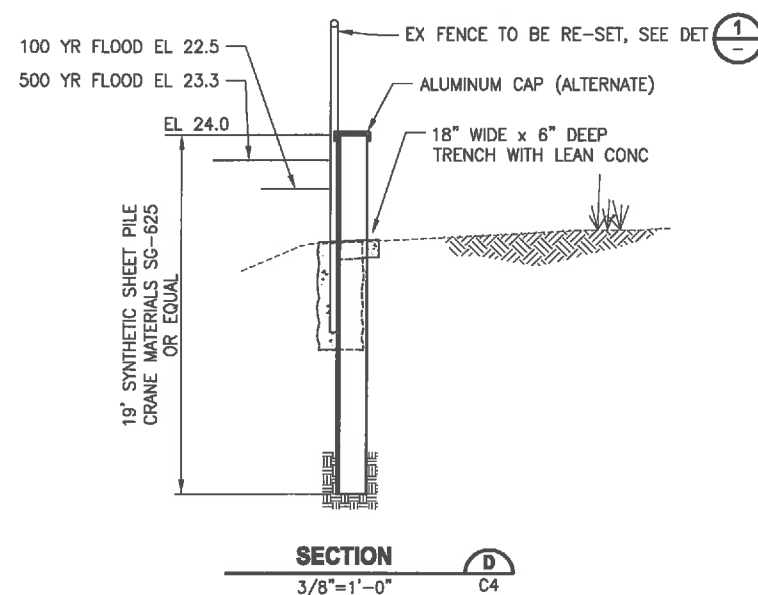
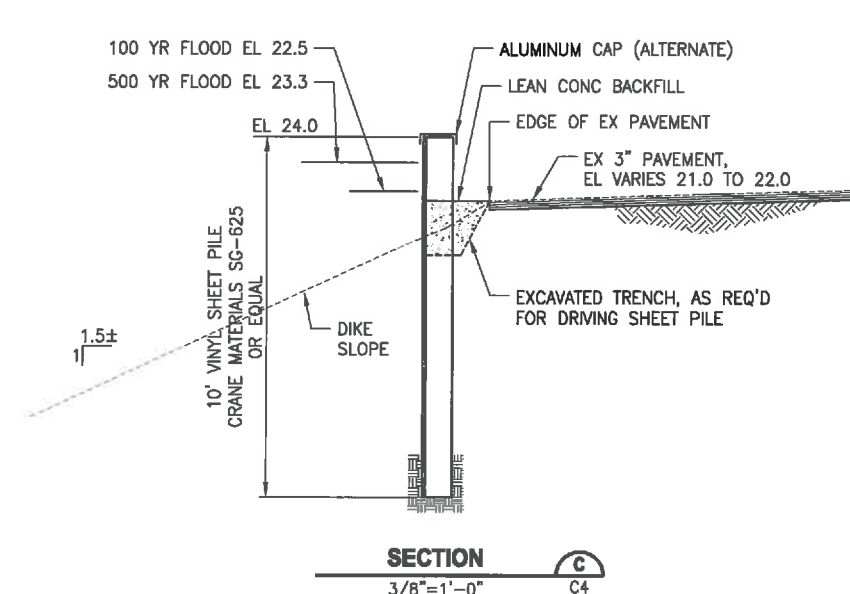
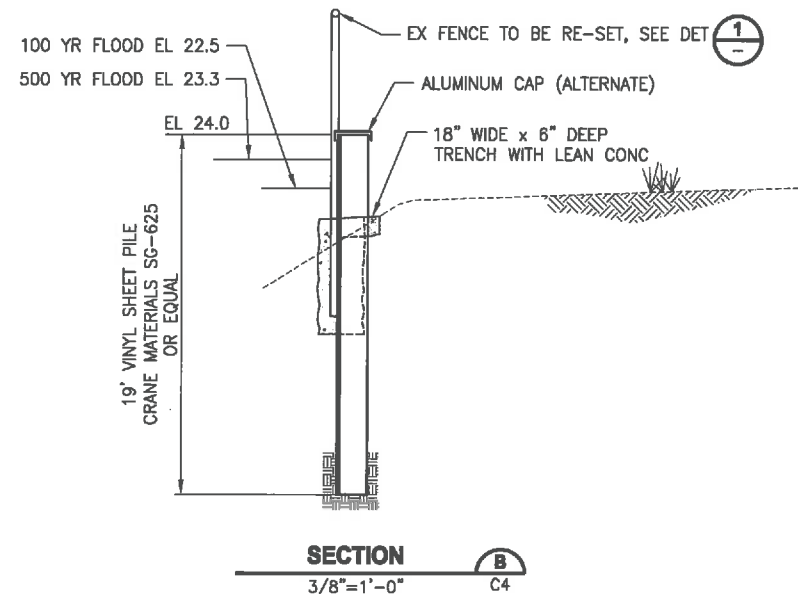
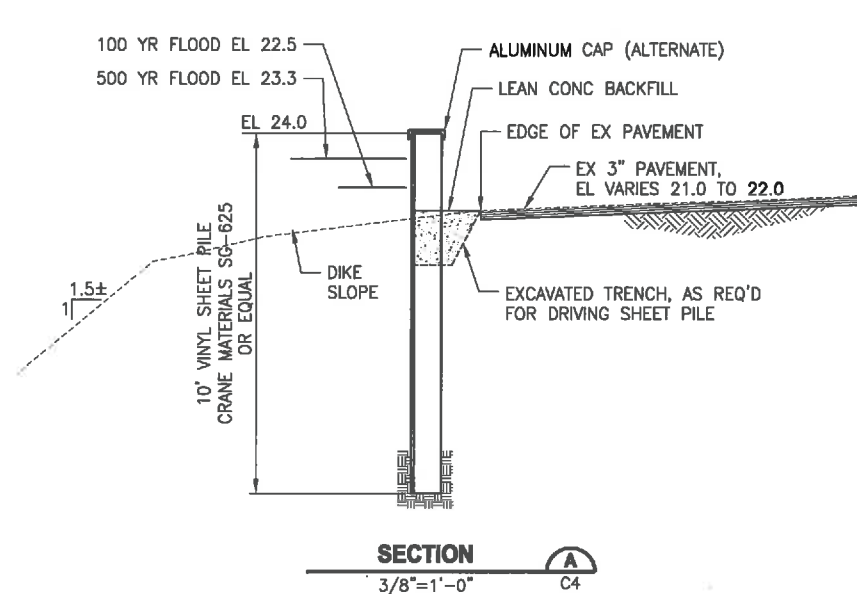
PROJECT NAME  
**MARY'S RIVER LUMBER AND  
MONTESANO WWTP BANK STABILIZATION**  
MONTESANO, WASHINGTON

**SCHEDULE A  
SHEET PILE WALL ALIGNMENT**

DRAWING NO.  
4 OF 12  
**C1**



LAYOUT: Sch A - C2  
PATH: U:\PSO\Projects\Clients\1678-CityOfMontesano\217-1678-042 MarysRiverWWTPBankStabil\98Sves\CADD\DWG\ PLOTTED BY: toyokot DATE: Wednesday, November 13, 2013 11:24:30 AM



REVISIONS	DATE	BY	DESIGNED
			R. HERMES
			DRAWN
			K. TAYLOR
			CHECKED
			APPROVED

ONE INCH AT FULL SCALE, IF NOT, SCALE ACCORDINGLY
FILE NAME
PS1678042-C1
JOB NO
217-1678-042
DATE
NOVEMBER 2013



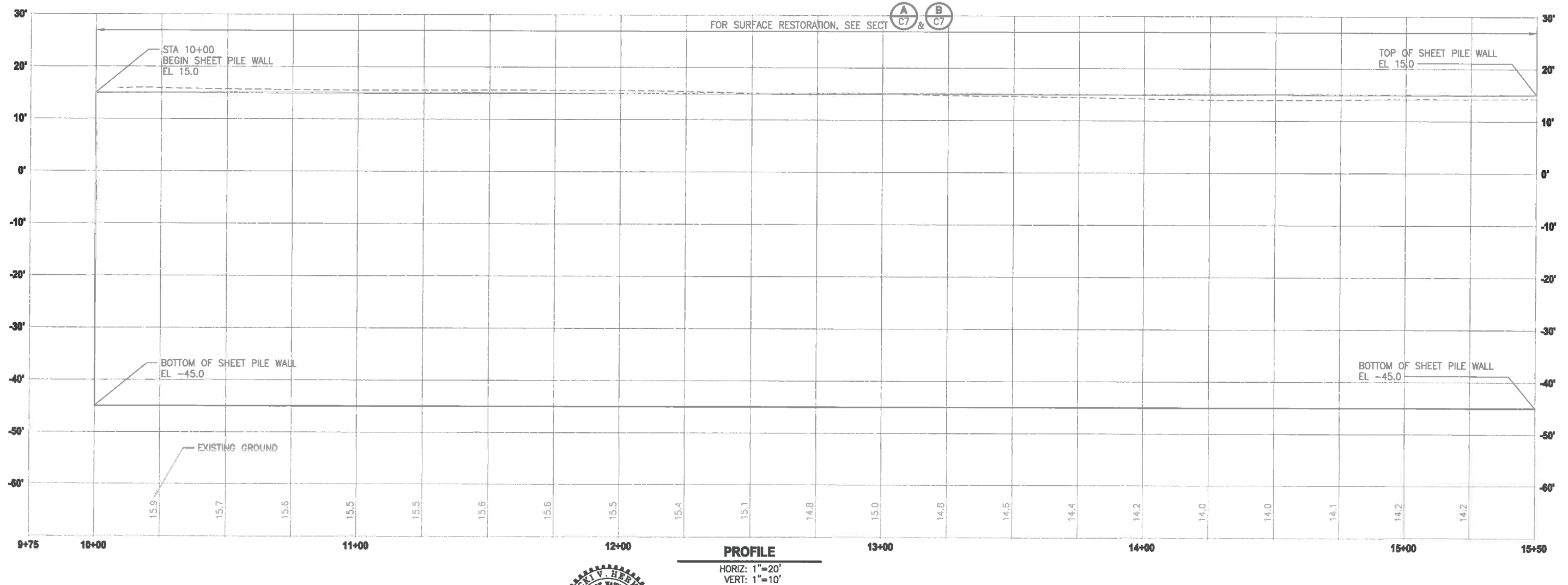
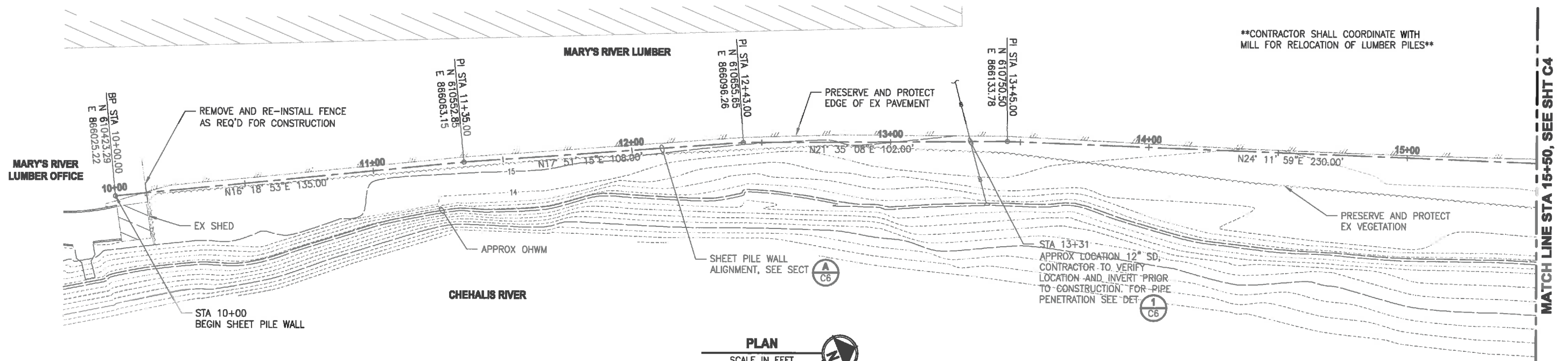
Parametrix	1019 39TH AVENUE SE, SUITE 100 PUYALLUP, WASHINGTON 98374 T. 253.604.8600 F. 253.604.8799 www.parametrix.com
------------	---

PROJECT NAME
MARY'S RIVER LUMBER AND MONTESANO WWTP BANK STABILIZATION
MONTESANO, WASHINGTON

SCHEDULE A SECTIONS AND DETAILS
------------------------------------

DRAWING NO. 5 OF 12
C2

LAYOUT: Sch C3 - C3  
PATH: C:\PMX\Temp\Pub\Pub\_3556\  
PLOTTED BY: toyokot DATE: Wednesday, November 13, 2013 4:38:39 PM



REVISIONS	DATE	BY	DESIGNED
			R. HERMES
			DRAWN
			K. TAYLOR
			CHECKED
			APPROVED

ONE INCH AT FULL SCALE. IF NOT, SCALE ACCORDINGLY
FILE NAME PS1678042-C3
JOB No. 217-1678-042
DATE NOVEMBER 2013



**Parametrix**

ENGINEERING · PLANNING · ENVIRONMENTAL SCIENCE

1010 30TH AVENUE SE, SUITE 100  
PUYALLUP, WASHINGTON 98374  
T. 253.604.8000 F. 253.604.8799  
www.parametrix.com

PROJECT NAME

**MARY'S RIVER LUMBER AND  
MONTESANO WWTP BANK STABILIZATION**

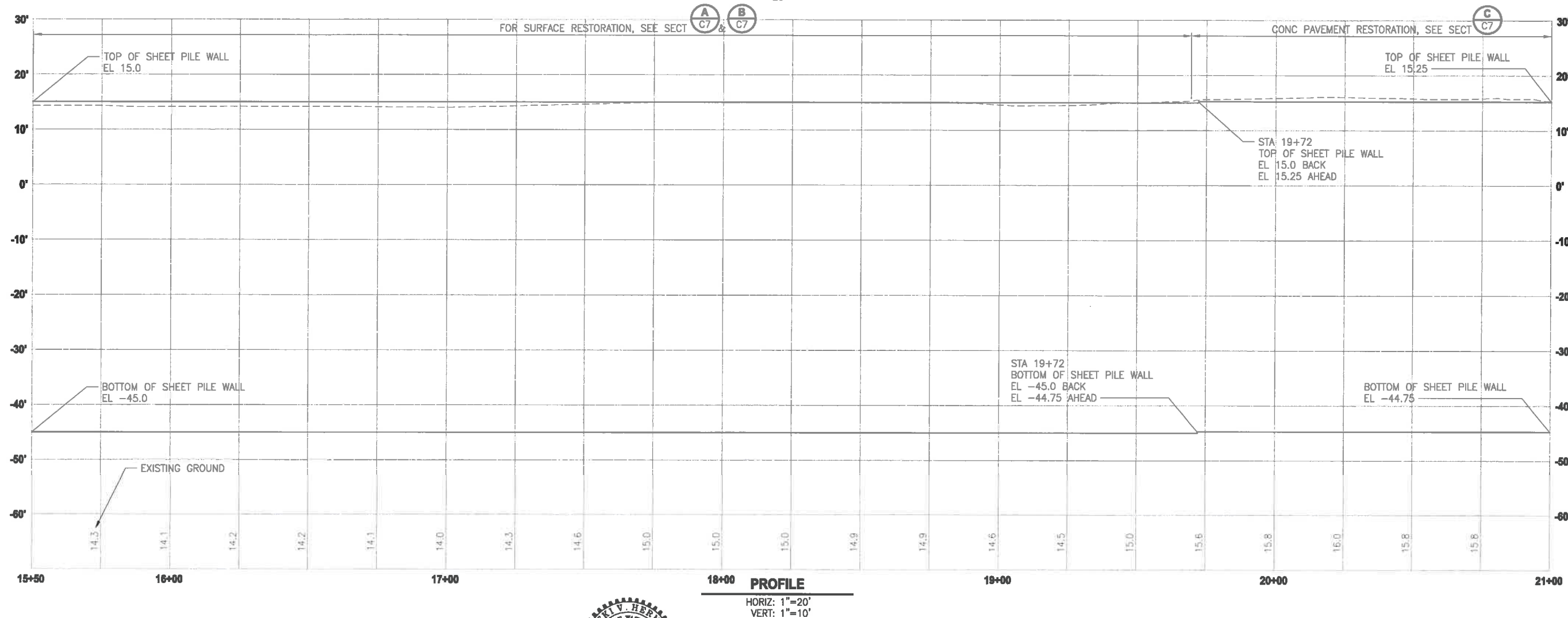
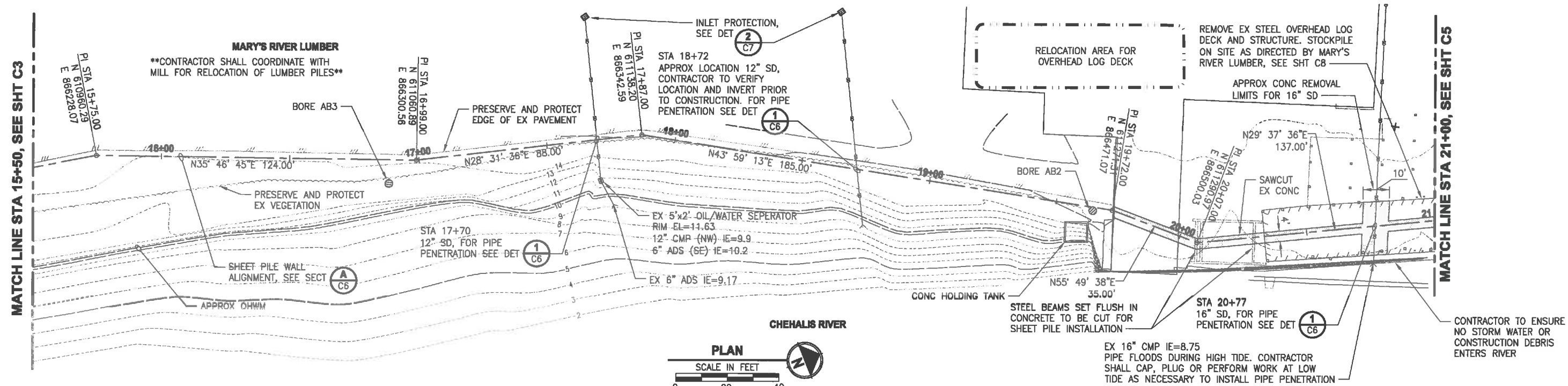
MONTESANO, WASHINGTON

**SCHEDULE B  
SHEET PILE WALL  
STA 10+00 TO STA 15+50**

DRAWING NO.  
6 OF 12

**C3**

LAYOUT: Sch B - C4  
PATH: C:\PM\Temp\AspPublish\_3656\ DATE: Wednesday, November 13, 2013 4:39:41 PM  
PLOTED BY: taylor  
DESIGNED BY: taylor



**Parametrix**  
ENGINEERING • PLANNING • ENVIRONMENTAL SCIENCES  
1019 39TH AVENUE SE, SUITE 100  
PUYALLUP, WASHINGTON 98374  
T. 253.804.0600 F. 253.804.5789  
www.parametrix.com

PROJECT NAME  
**MARY'S RIVER LUMBER AND  
MONTESANO WWTP BANK STABILIZATION**  
MONTESANO, WASHINGTON

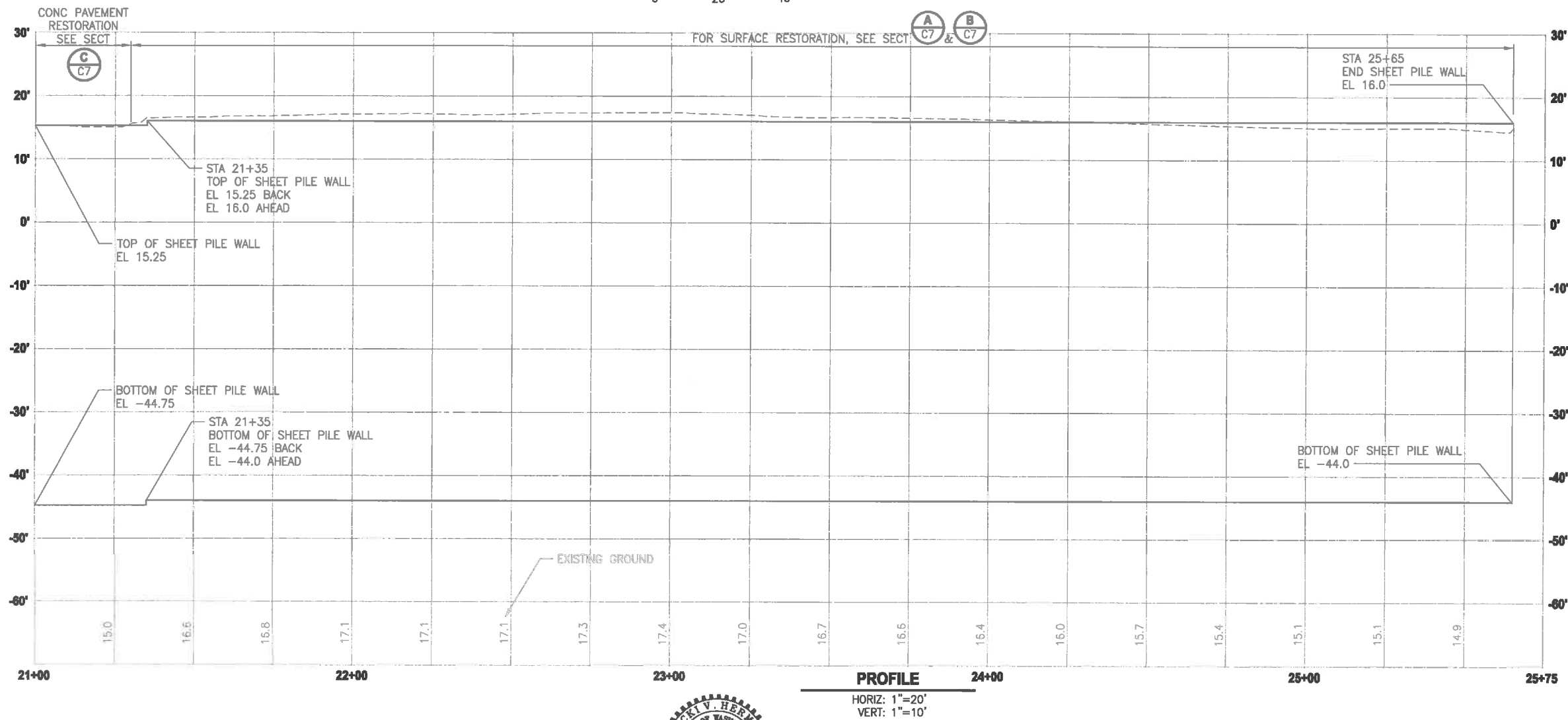
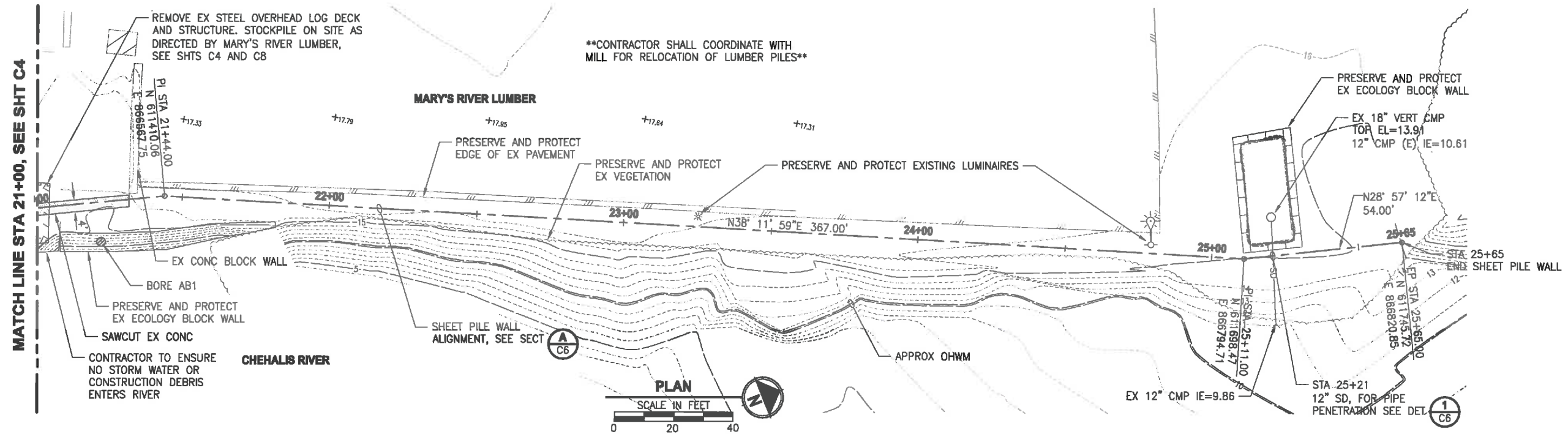
**SCHEDULE B  
SHEET PILE WALL  
STA 15+50 TO STA 21+00**

DRAWING NO.  
7 OF 12  
**C4**

REVISIONS	DATE	BY	DESIGNED R. HERMES
			DRAWN K. TAYLOR
			CHECKED <i>[Signature]</i>
			APPROVED <i>[Signature]</i>

ONE INCH AT FULL SCALE. IF NOT, SCALE ACCORDINGLY
FILE NAME PS1678042-C3
JOB NO. 217-1678-042
DATE NOVEMBER 2013

LAYOUT: Sht. B - C5  
PATH: C:\PWS\Temp\Asp\Publin\_3695\ PLOTTED BY: tayokat DATE: Wednesday, November 13, 2013 4:39:43 PM



REVISIONS	DATE	BY	DESIGNED
			R. HERMES
			DRAWN K. TAYLOR
			CHECKED <i>[Signature]</i>
			APPROVED <i>[Signature]</i>

ONE INCH AT FULL SCALE. IF NOT, SCALE ACCORDINGLY
FILE NAME PS1678042-C3
JOB No. 217-1678-042
DATE NOVEMBER 2013



**Parametrix**  
ENGINEERING • PLANNING • ENVIRONMENTAL SERVICES

1019 30TH AVENUE SE, SUITE 100  
PUYALLUP, WASHINGTON 98374  
T. 253.604.6600 F. 253.604.6799  
www.parametrix.com

PROJECT NAME  
**MARY'S RIVER LUMBER AND  
MONTESANO WWTP BANK STABILIZATION**

MONTESANO, WASHINGTON

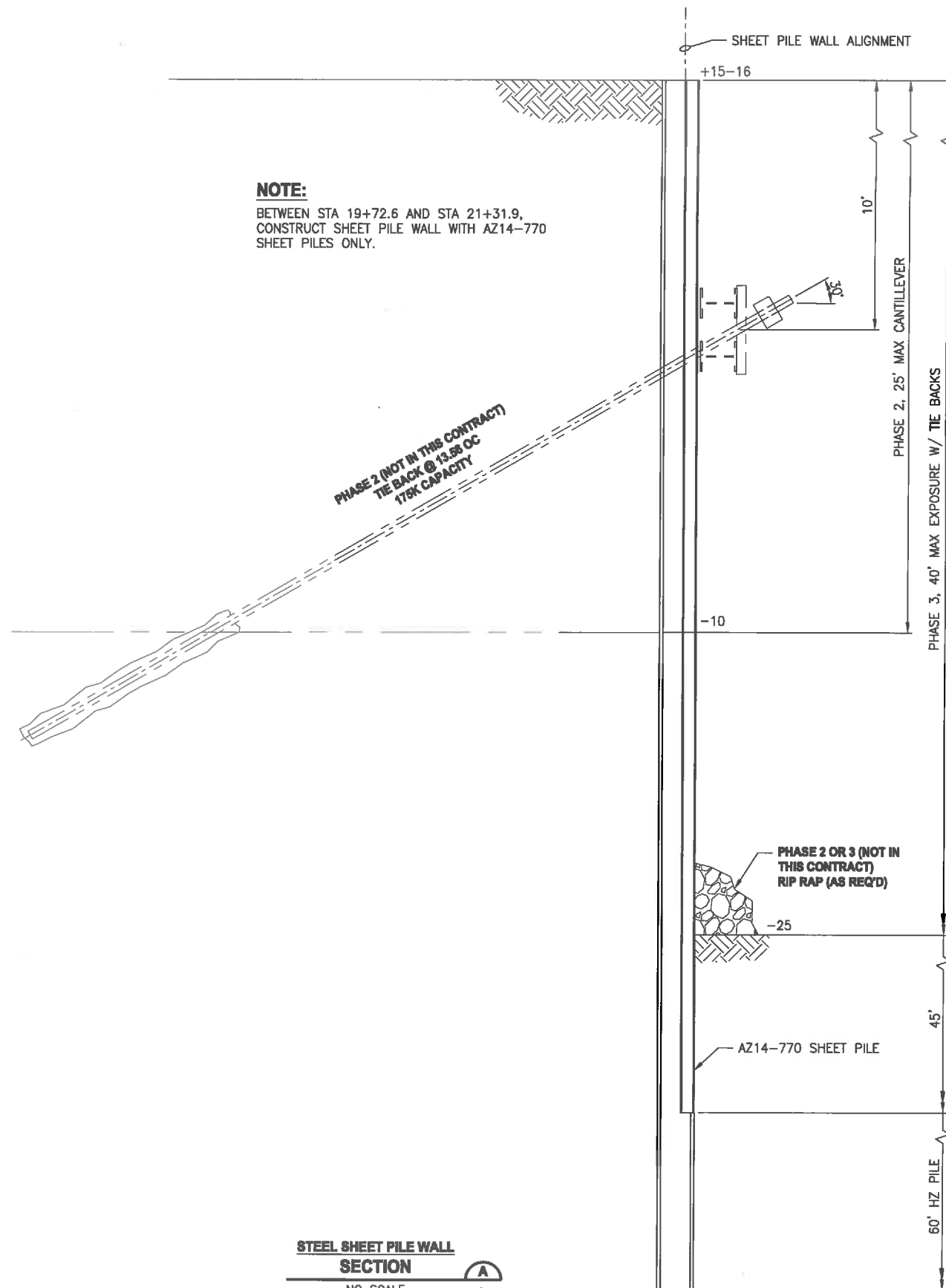
**SCHEDULE B  
SHEET PILE WALL  
STA 21+00 TO STA 25+50**

DRAWING NO.  
8 OF 12

**C5**

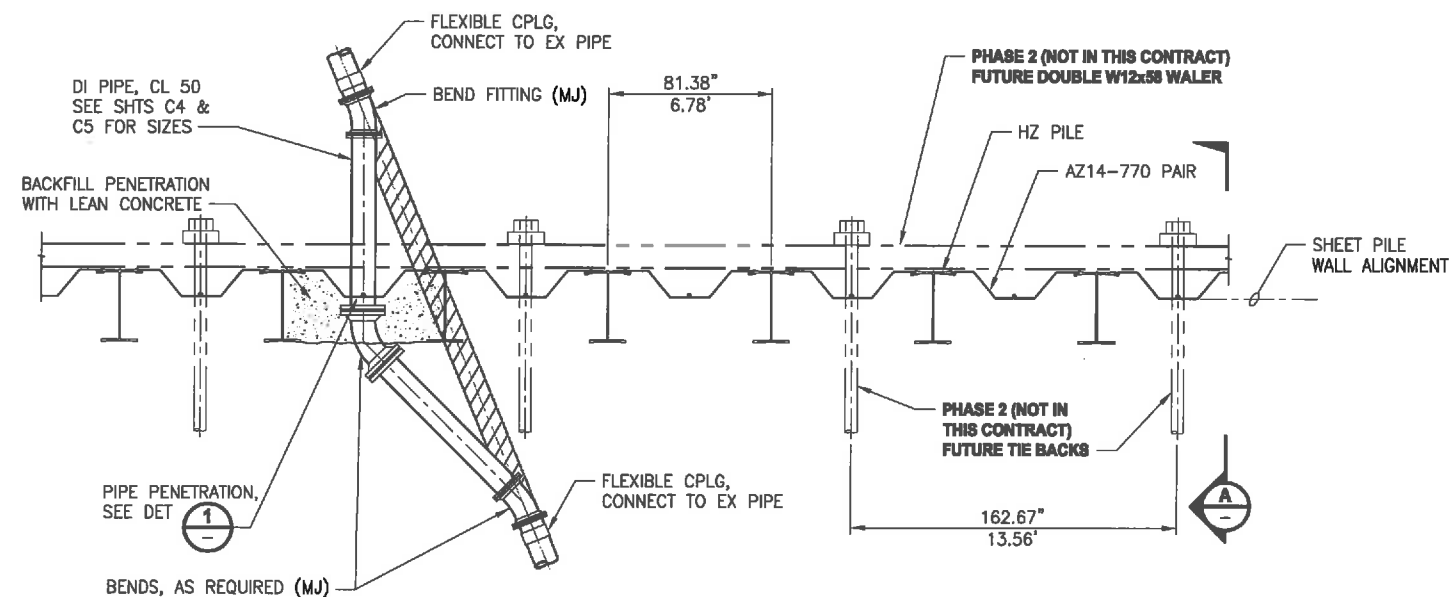


LAYOUT: Sht B - C6  
PATH: U:\PSO\Projects\Clients\1878-CityOfMontesano\217-1678-042 MarysRiverWWTPBankStabal\98Spec\CADD\DWG\ PLOTTED BY: toylakot DATE: Wednesday, November 13, 2013 11:46:30 AM



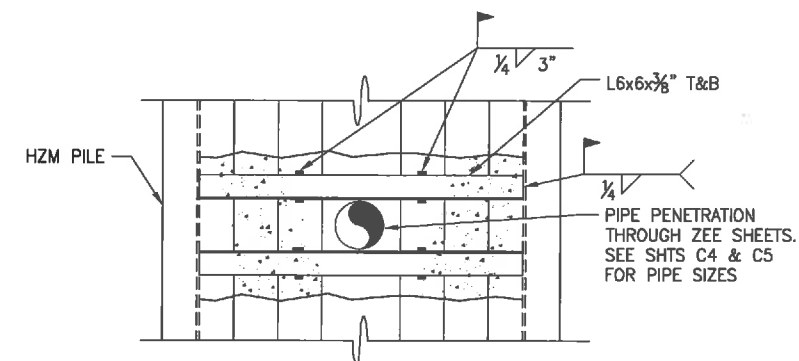
**NOTES:**

1. SHEET PILING SHOWN IS SKYLINE STEEL HZ1080MA/AZ14-770 COMBINATION SECTION. REQ'D SECTION MODULUS = 132 IN <sup>3</sup>/FT AND MIN STEEL F<sub>y</sub> = 50 KSI.
2. MAX SCOUR DEPTH IS 25 FT @ FACE OF WALL, AT WHICH TIME TIE BACK SYSTEM (PHASE 2) MUST BE INSTALLED OR RIP RAP TO PREVENT FURTHER EROSION ON FACE.



**PARTIAL  
PLAN**

1/4"=1'-0"



**PIPE PENETRATION  
SEEN FROM LAND SIDE  
DETAIL**

1/2"=1'-0"



**Parametrix**

ENGINEERING • PLANNING • ENVIRONMENTAL SCIENCES

1010 39TH AVENUE SE, SUITE 100  
PUYALLUP, WASHINGTON 98374  
T. 253.604.8800 F. 253.604.8799  
www.parametrix.com

PROJECT NAME

**MARY'S RIVER LUMBER AND  
MONTESANO WWTP BANK STABILIZATION**

MONTESANO, WASHINGTON

**SCHEDULE B  
SECTIONS AND DETAILS**

DRAWING NO.  
9 OF 12

**C6**

REVISIONS	DATE	BY	DESIGNED R. HERMES / S. WAGNER
			DRAWN K. TAYLOR
			CHECKED <i>[Signature]</i>
			APPROVED <i>[Signature]</i>

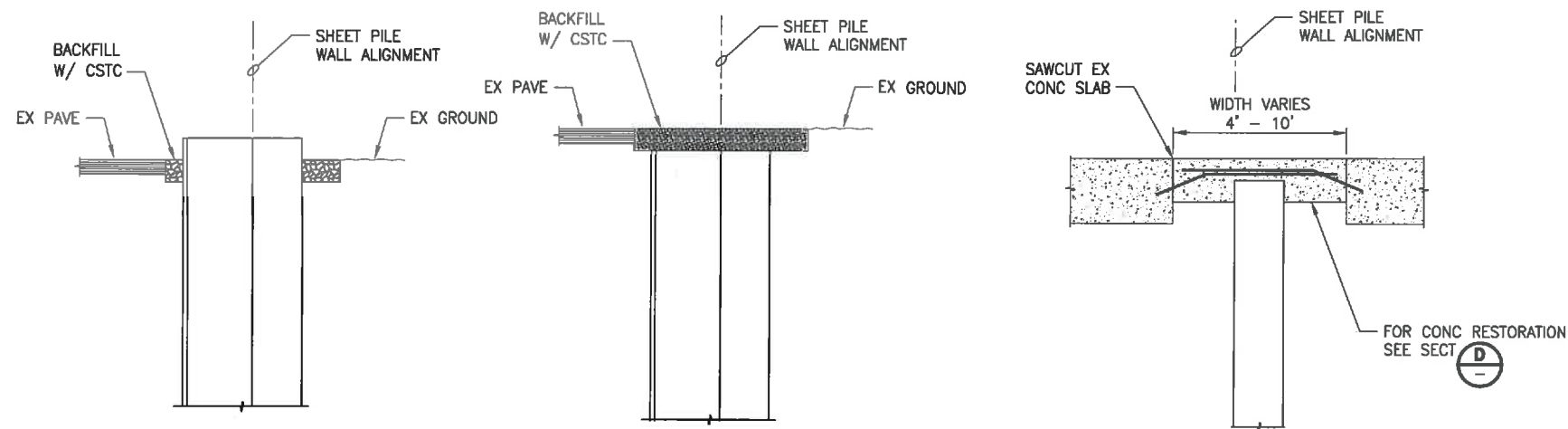
ONE INCH AT FULL SCALE,  
IF NOT, SCALE ACCORDINGLY

FILE NAME  
PS1678042-C6

JOB No.  
217-1678-042

DATE  
NOVEMBER 2013

LAYOUT: Sch A & B - C7  
PATH: U:\PSD\Projects\Clients\1678-CityOfMontesano\217-1678-042 MarysRiverWWTPBankStabil\98Sves\CA00.DWG  
PLOTED BY: taylakat DATE: Wednesday, November 13, 2013 11:47:07 AM



RESTORATION  
SECTION

1/2"=1'-0"

A  
TYP

RESTORATION  
SECTION

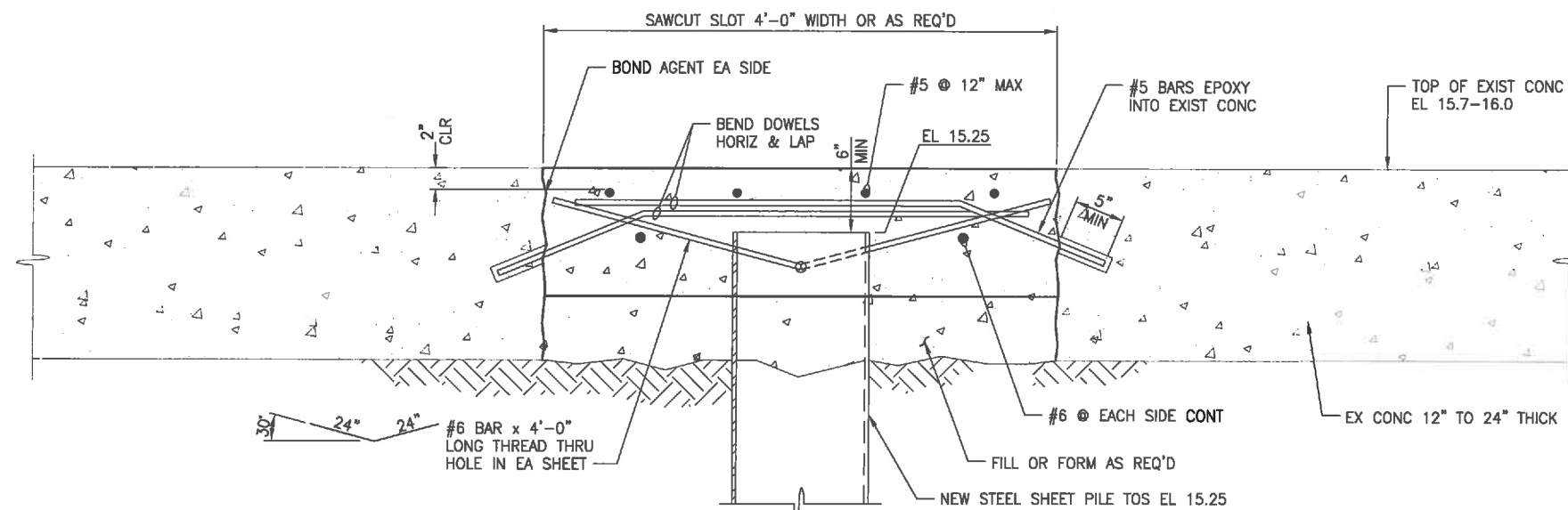
1/2"=1'-0"

B  
TYP

RESTORATION  
SECTION

1/2"=1'-0"

C  
TYP



CONCRETE SLAB RESTORATION  
SECTION

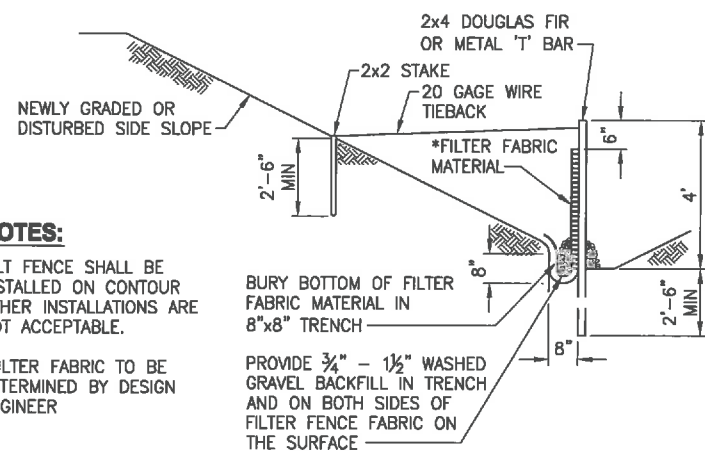
1 1/2"=1'-0"

D  
TYP

**NOTES:**

SILT FENCE SHALL BE INSTALLED ON CONTOUR. OTHER INSTALLATIONS ARE NOT ACCEPTABLE.

\*FILTER FABRIC TO BE DETERMINED BY DESIGN ENGINEER

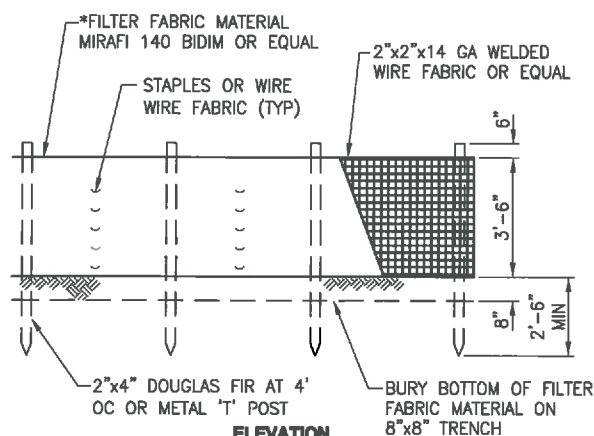


TYPICAL CROSS SECTION

SILT FENCE  
DETAIL

NO SCALE

1  
TYP



ELEVATION



ONE INCH AT FULL SCALE.  
IF NOT, SCALE ACCORDINGLY.  
FILE NAME  
PS1678042-C6  
JOB No.  
217-1678-042  
DATE  
NOVEMBER 2013

**Parametrix**  
ENGINEERING • PLANNING • ENVIRONMENTAL SCIENCES

1010 38TH AVENUE SE, SUITE 100  
PUYALLUP, WASHINGTON 98374  
T. 253.604.6600 F. 253.604.6799  
www.parametrix.com

PROJECT NAME

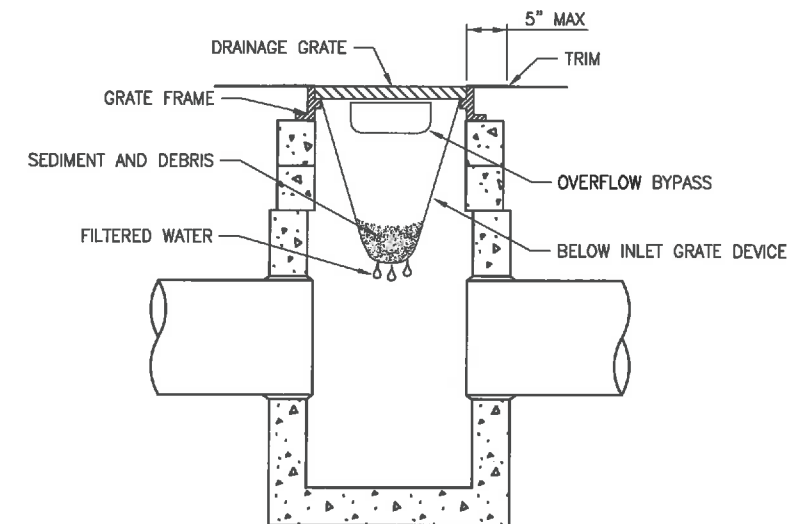
MARY'S RIVER LUMBER AND  
MONTESANO WWTP BANK STABILIZATION

MONTESANO, WASHINGTON

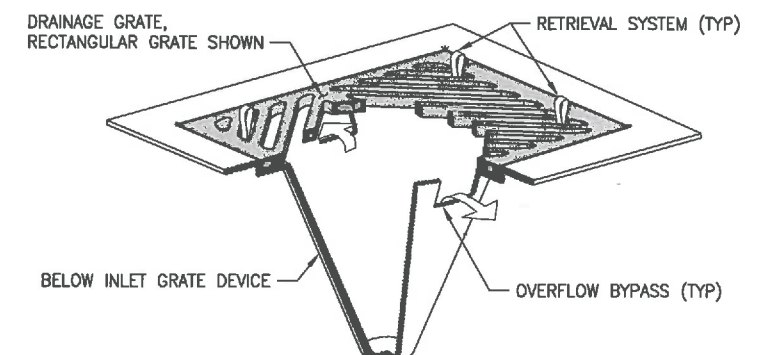
STORM DRAIN INLET PROTECTION  
DETAIL

NO SCALE

2  
TYP



SECTION VIEW



ISOMETRIC VIEW

**NOTES:**

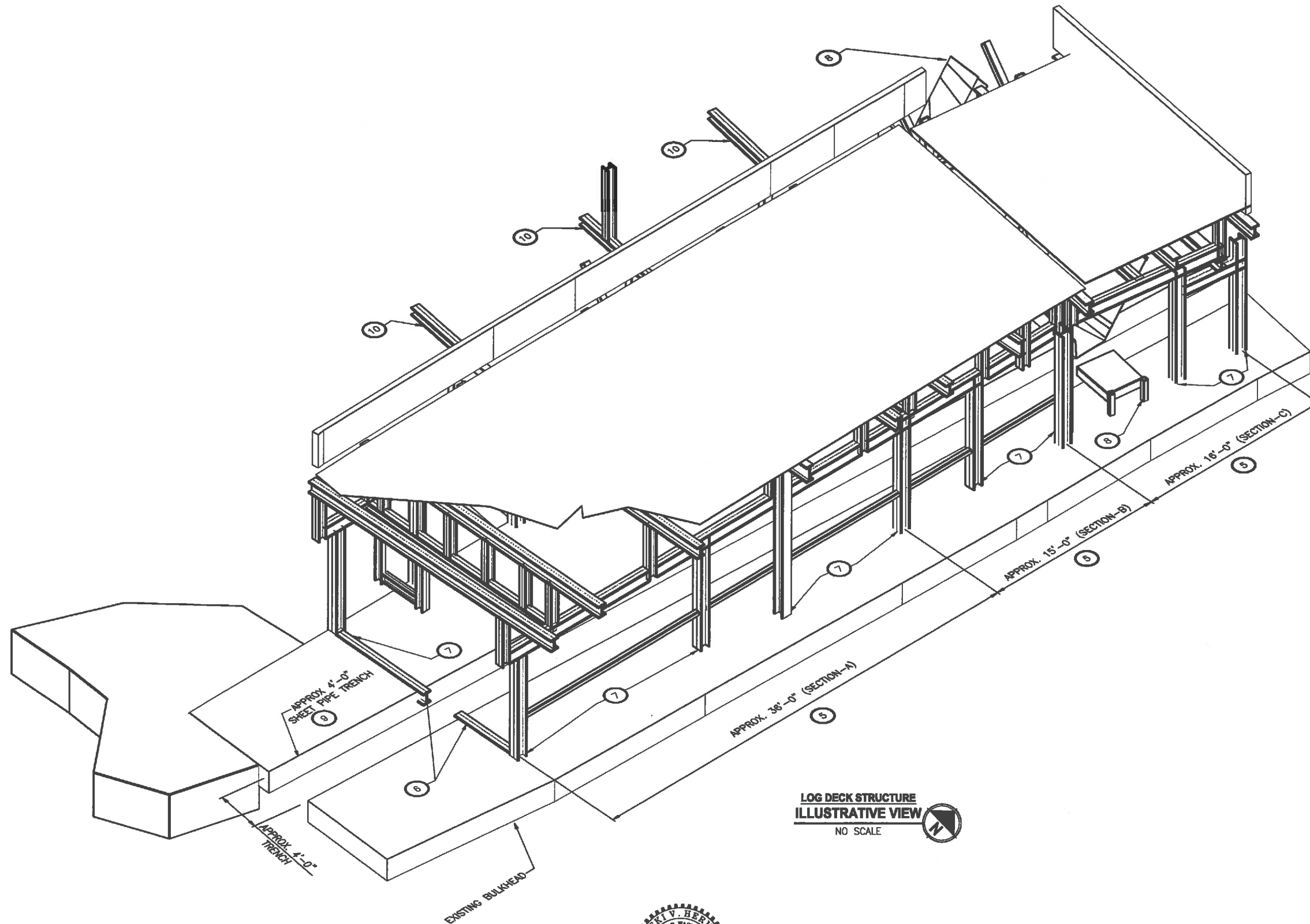
1. SIZE THE BELOW INLET GRATE DEVICE (BIGD) FOR THE STORM WATER STRUCTURE IT WILL SERVICE.
2. THE BIGD SHALL HAVE A BUILT-IN HIGH-FLOW RELIEF SYSTEM (OVERFLOW BYPASS).
3. THE RETRIEVAL SYSTEM MUST ALLOW REMOVAL OF THE BIGD WITHOUT SPILLING THE COLLECTED MATERIAL.
4. PERFORM MAINTENANCE IN ACCORDANCE WITH STD SPEC 8-01.3(15).

**SCHEDULE A AND B  
SECTIONS AND DETAILS**

DRAWING NO.  
10 OF 12

C7

PATH: E:\Marys river lumber\area scan files\ PLOTTED BY: westcl DATE: Wednesday, November 13, 2013 3:28:12 PM  
LAYOUT: Layout2



#### NOTES:

1. INFORMATION SHOWN ON THIS DRAWING IS PRODUCED FROM EXISTING REFERENCE DRAWINGS AND LASER SCANNING. ALL INFORMATION SHALL BE FIELD VERIFIED AND LOCATED PRIOR TO CONSTRUCTION.
2. CONTRACTOR SHALL VERIFY ALL ELECTRICAL POWER HAS BEEN DISCONNECTED FROM OVERHEAD LOG DECK & STRUCTURE SITE AREA PRIOR TO CONSTRUCTION.
3. DISMANTLING AND REMOVAL OF OVERHEAD LOG DECK & STRUCTURE SHALL BE PERFORMED IN A MANNER TO ALLOW REASSEMBLY OF STRUCTURE AT A LATER DATE.
4. CONTRACTOR SHALL DISMANTLE AND RELOCATE ALL MECHANICAL EQUIPMENT LOCATED IN OR AROUND OVERHEAD LOG DECK & STRUCTURE PRIOR TO REMOVING OVERHEAD LOG DECK & STRUCTURE.
5. DISMANTLING OF OVERHEAD LOG DECK & STRUCTURE SHALL BE SEPARATED INTO THREE HORIZONTAL SECTION; SECTION-A, SECTION-B, AND SECTION-C AS NOTED ON DRAWINGS
6. CUT ALL EXISTING UNDERGROUND SUPPORT STEEL AND REMOVE STEEL SECTIONS AT SHEET PILE WALL TRENCH LOCATION. SEE SHEET C7 FOR SHEET PILE WALL LOCATION. STOCKPILE REMOVED STEEL FOR REATTACHMENT AT A LATER DATE.
7. CUT ALL VERTICAL COLUMNS, BEAMS AND BRACING OF ALL THREE SECTIONS APPROXIMATELY 2 INCHES ABOVE GRADE LEVEL AND REMOVE STRUCTURE SECTIONS VERTICALLY.
8. THE MILL WILL REMOVE AND RELOCATE LOG CHUTE, CHUTE PLATFORMS AND CHUTE FRAME FROM OVERHEAD LOG DECK & STRUCTURE, CONTRACTOR TO COORDINATE WITH MILL.
9. CONTINUOUS SHEET PILE WALL TRENCH, SEE SHEETS C4 AND C5 FOR LOCATION.
10. ADJACENT EXISTING LOG DECK NOT DEPICTED TO REMAIN IN PLACE.

REVISIONS	DATE	BY	DESIGNED
			R. HERMES
			DRAWN
			C. WEST
			CHECKED
			APPROVED

ONE INCH AT FULL SCALE. IF NOT, SCALE ACCORDINGLY
FILE NAME sheet c8
JOB No. 217-1878-042
DATE NOVEMBER 2013



**Parametrix**  
ENGINEERING . PLANNING . ENVIRONMENTAL SCIENCES

1019 39TH AVENUE SE, SUITE 100  
PUYALLUP, WASHINGTON 98374  
T: 206.804.6600 F: 206.804.6788  
www.parametrix.com

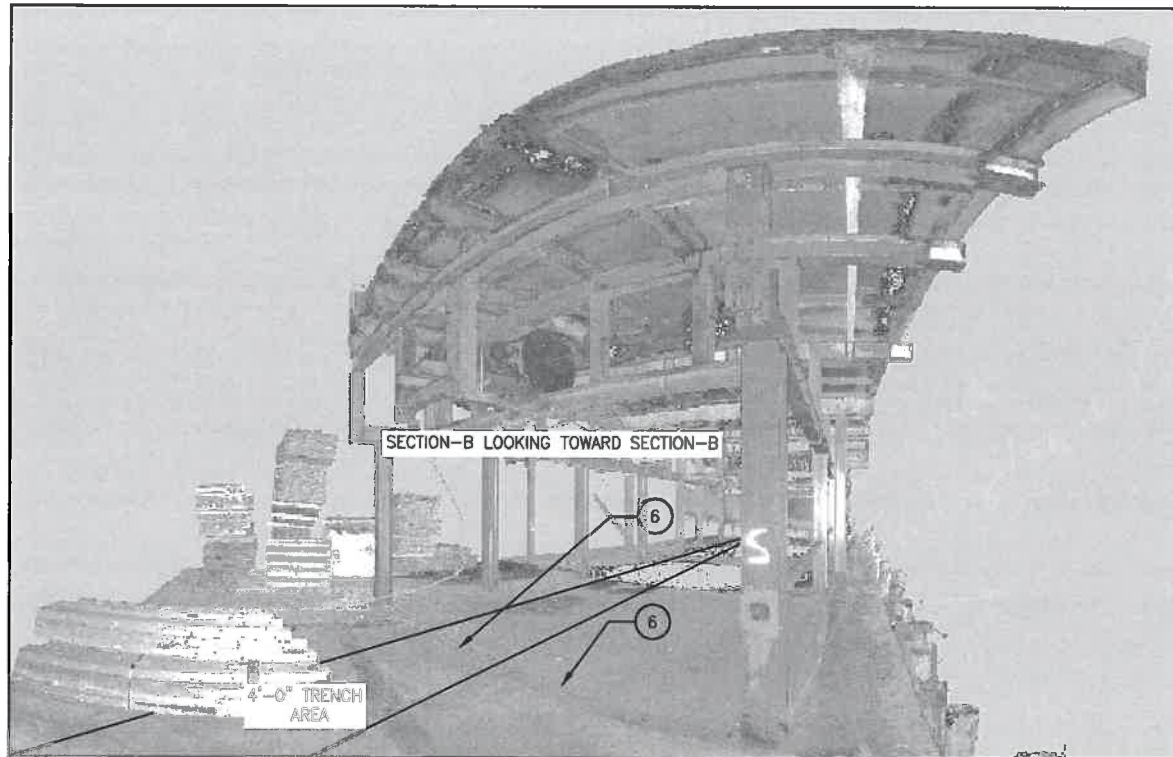
PROJECT NAME  
**MARY'S RIVER LUMBER AND  
MONTESANO WWTP BANK STABILIZATION**  
  
MONTESANO, WASHINGTON

**SCHEDULE B OVERHEAD LOG DECK  
AND STRUCTURE REMOVAL LIMITS**

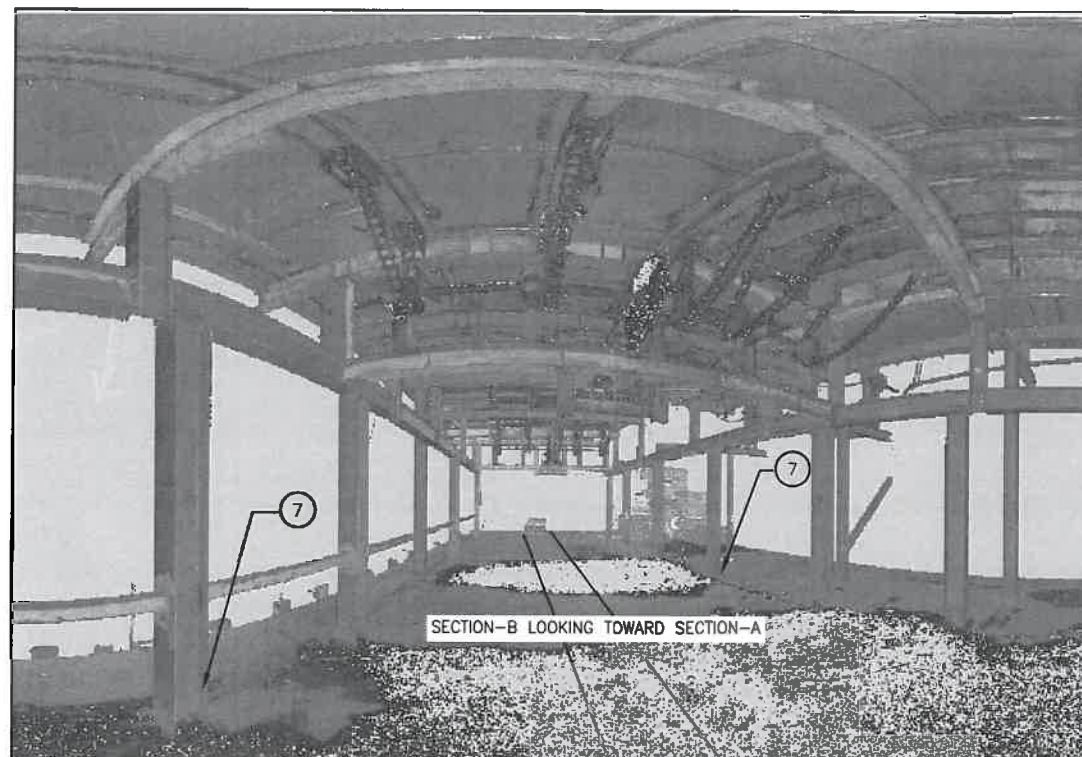
DRAWING NO.  
11 OF 12  
  
**C8**



LAYOUT: Layout1  
PATH: E:\Marys River Lumber\area scan files\  
PLOTTED BY: westall  
DATE: Tuesday, November 12, 2013 4:22:03 PM



**SECTION-A**  
**ILLUSTRATIVE VIEW**  
NO SCALE



**SECTION-B**  
**ILLUSTRATIVE VIEW**  
NO SCALE



**SECTION-C**  
**ILLUSTRATIVE VIEW**  
NO SCALE

**NOTES:**

1. INFORMATION SHOWN ON THIS DRAWING IS PRODUCED FROM EXISTING REFERENCE DRAWINGS AND LASER SCANNING. ALL INFORMATION SHALL BE FIELD VERIFIED AND LOCATED PRIOR TO CONSTRUCTION.
2. CONTRACTOR SHALL VERIFY ALL ELECTRICAL POWER HAS BEEN DISCONNECTED FROM OVERHEAD LOG DECK & STRUCTURE SITE AREA PRIOR TO CONSTRUCTION.
3. DISMANTLING AND REMOVAL OF OVERHEAD LOG DECK & STRUCTURE SHALL BE PERFORMED IN A MANNER TO ALLOW REASSEMBLY OF STRUCTURE AT A LATER DATE.
4. CONTRACTOR SHALL DISMANTLE AND RELOCATE ALL MECHANICAL EQUIPMENT LOCATED IN OR AROUND OVERHEAD LOG DECK & STRUCTURE PRIOR TO REMOVING OVERHEAD LOG DECK & STRUCTURE.
5. DISMANTLING OF OVERHEAD LOG DECK & STRUCTURE SHALL BE SEPARATED INTO THREE HORIZONTAL SECTION; SECTION-A, SECTION-B, AND SECTION-C AS NOTED ON DRAWINGS
- 6 CUT ALL EXISTING UNDERGROUND SUPPORT STEEL AND REMOVE STEEL SECTIONS AT SHEET PILE WALL TRENCH LOCATION. SEE SHEET C7 FOR SHEET PILE WALL LOCATION. STOCKPILE REMOVED STEEL FOR REATTACHMENT AT A LATER DATE.
- 7 CUT ALL VERTICAL COLUMNS, BEAMS AND BRACING OF ALL THREE SECTIONS APPROXIMATELY 2 INCHES ABOVE GRADE LEVEL AND REMOVE STRUCTURE SECTIONS VERTICALLY.
- 8 THE MILL WILL REMOVE AND RELOCATE LOG CHUTE, CHUTE PLATFORMS AND CHUTE FRAME FROM OVERHEAD LOG DECK & STRUCTURE, CONTRACTOR TO COORDINATE WITH MILL.

REVISIONS	DATE	BY	DESIGNED R. HERMES
			DRAWN C. WEST
			CHECKED <i>[Signature]</i>
			APPROVED <i>[Signature]</i>

ONE INCH AT FULL SCALE, IF NOT, SCALE ACCORDINGLY
FILE NAME sheet c9
JOB No. 217-167B-042
DATE NOVEMBER 2013



<b>Parametrix</b> ENGINEERING • PLANNING • ENVIRONMENTAL SCIENCES	1019 30TH AVENUE SE, SUITE 100 PUYALLUP, WASHINGTON 98374 T. 253.604.0000 F. 253.604.0799 www.parametrix.com
--	---

PROJECT NAME <b>MARY'S RIVER LUMBER AND MONTESANO WWTP BANK STABILIZATION</b>  MONTESANO, WASHINGTON
---

<b>SCHEDULE B OVERHEAD LOG DECK AND STRUCTURE VIEWS</b>
---

DRAWING NO. 12 OF 12  <b>C9</b>
--