



City of Montesano

Home of the Tree Farm

Mary's River & WWTP Protection Projects - UPDATE

Thursday 18th November, 2013



Mary's River Mill Site – Project Goals

- Protect bank from erosion and failures
- Maintain 120+ jobs
- Protect SR 107 bridge & highway
- No negative environmental impacts

WWTP Site – Project Goals

- Reduce risk of structural damage during high flows
- Eliminate risk of environmental impacts caused by raw sewage & sludge mixing with flood waters.

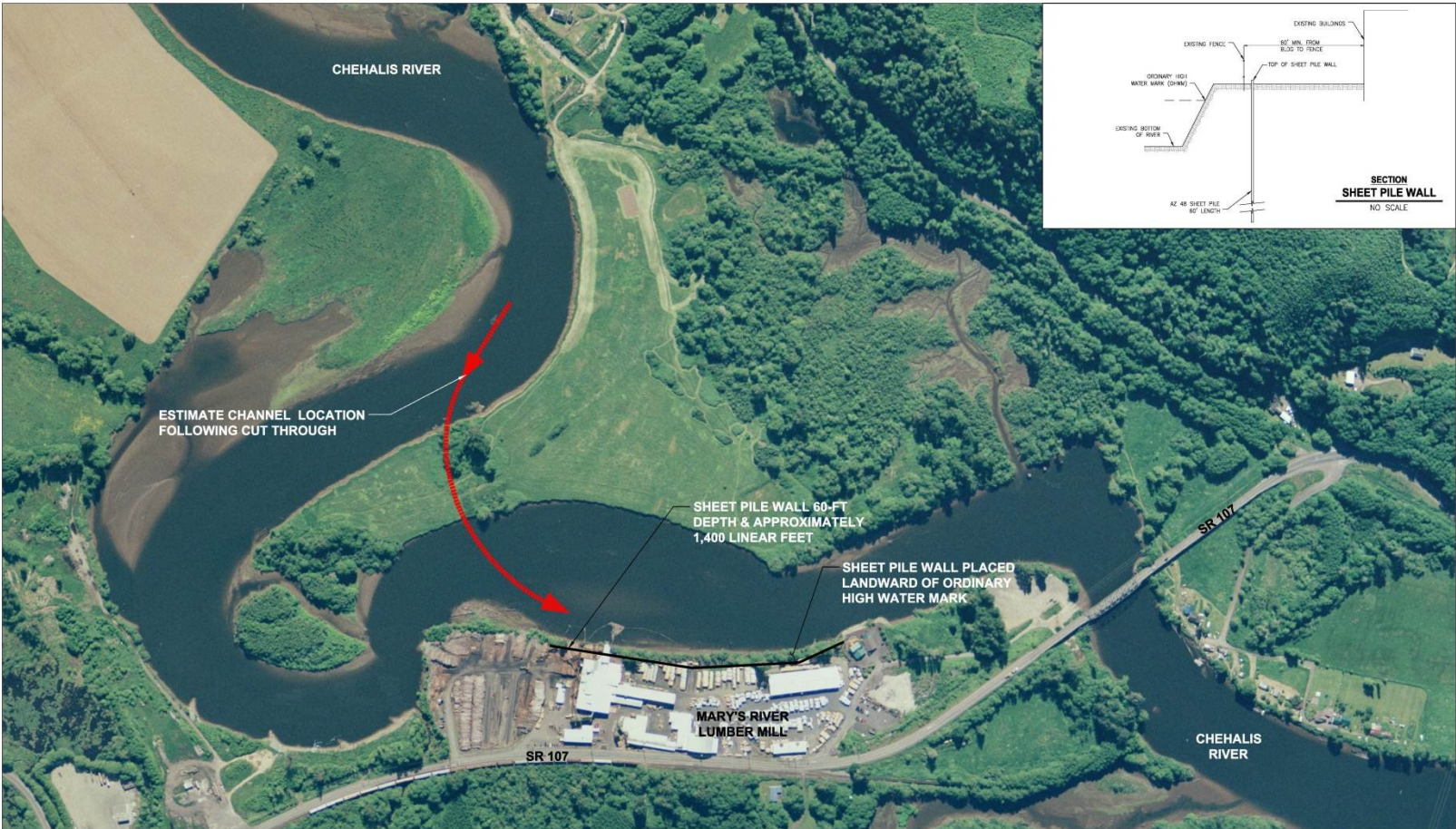
Project Area



Preferred Alternatives

- **Steel Sheet Pile Wall – Mary’s River Mill**
- **Vinyl Sheet Pile Wall – WWTP**

Sheet Pile Wall - Mary's River



**PREFERRED ALTERNATIVE
SHEET PILE WALL
MARY'S RIVER LUMBER
CITY OF MONTESANO**

Mary's River - Sheet Pile Wall



MARY'S RIVER LUMBER

PROPOSED SHEET PILE WALL

ORDINARY HIGH WATER MARK

CHEHALIS RIVER

Mary's River - Sheet Pile Wall



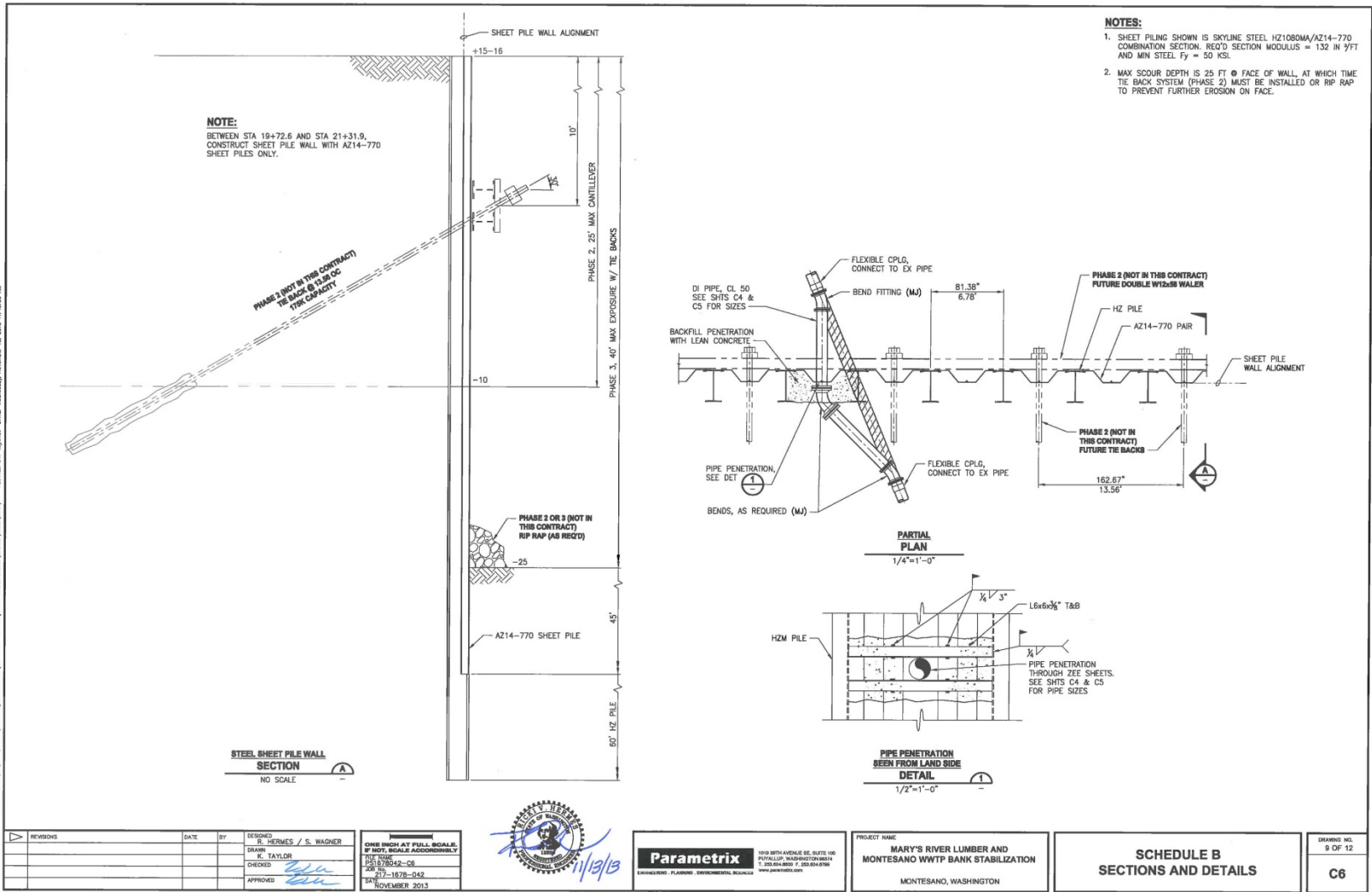
MARY'S RIVER LUMBER

PROPOSED SHEET PILE WALL

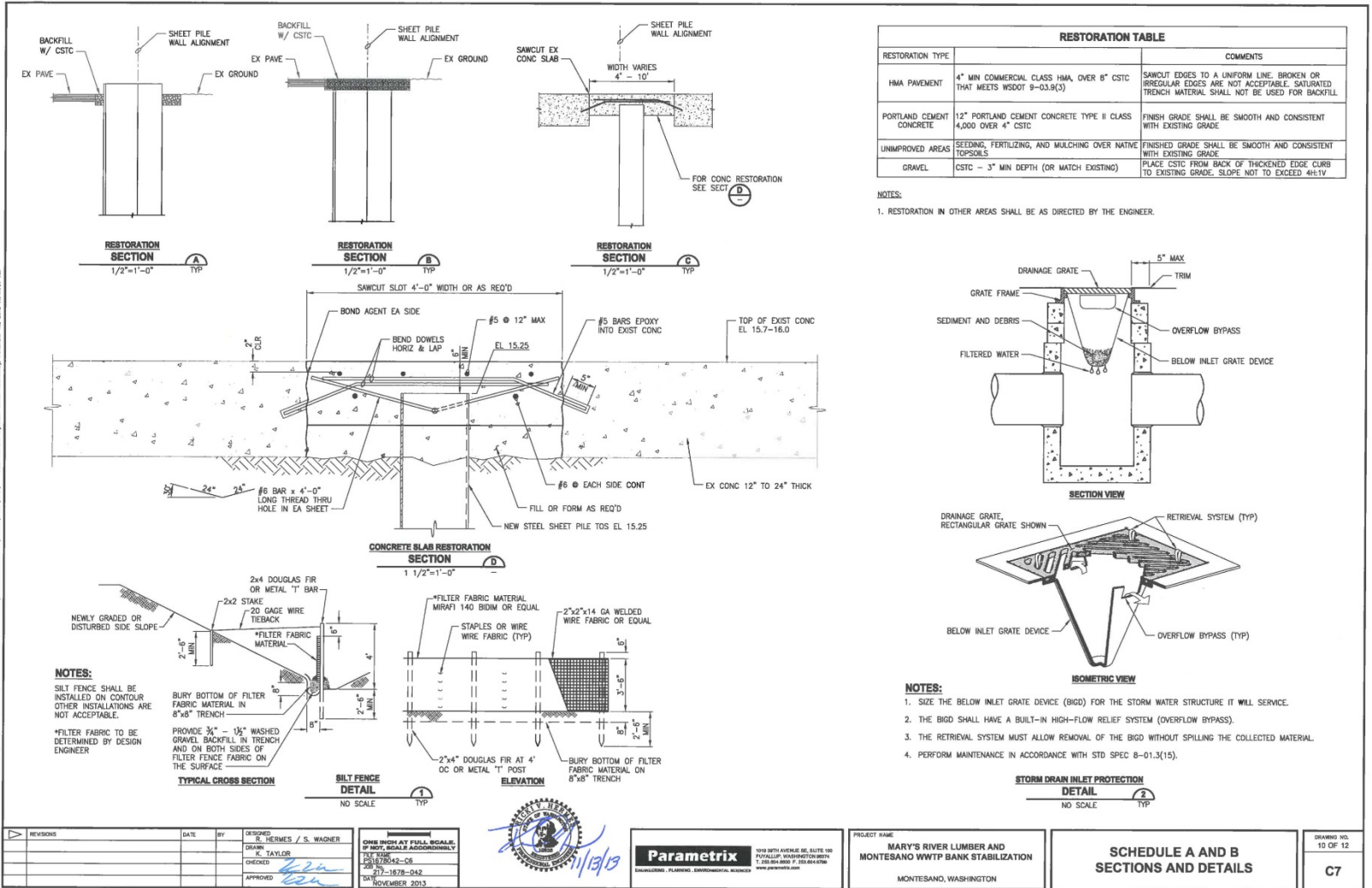
ORDINARY HIGH WATER MARK

CHEHALIS RIVER

Mary's River - Sheet Pile Wall Detail



Mary's River - Sheet Pile Wall Detail



LAYOUT: SA, A, B, C, D
 DATE: 11/20/2013
 PROJECT: MARY'S RIVER LUMBER AND MONTESANO WWTP BANK STABILIZATION
 DRAWING NO: 10 OF 12
 SHEET: 11 OF 27

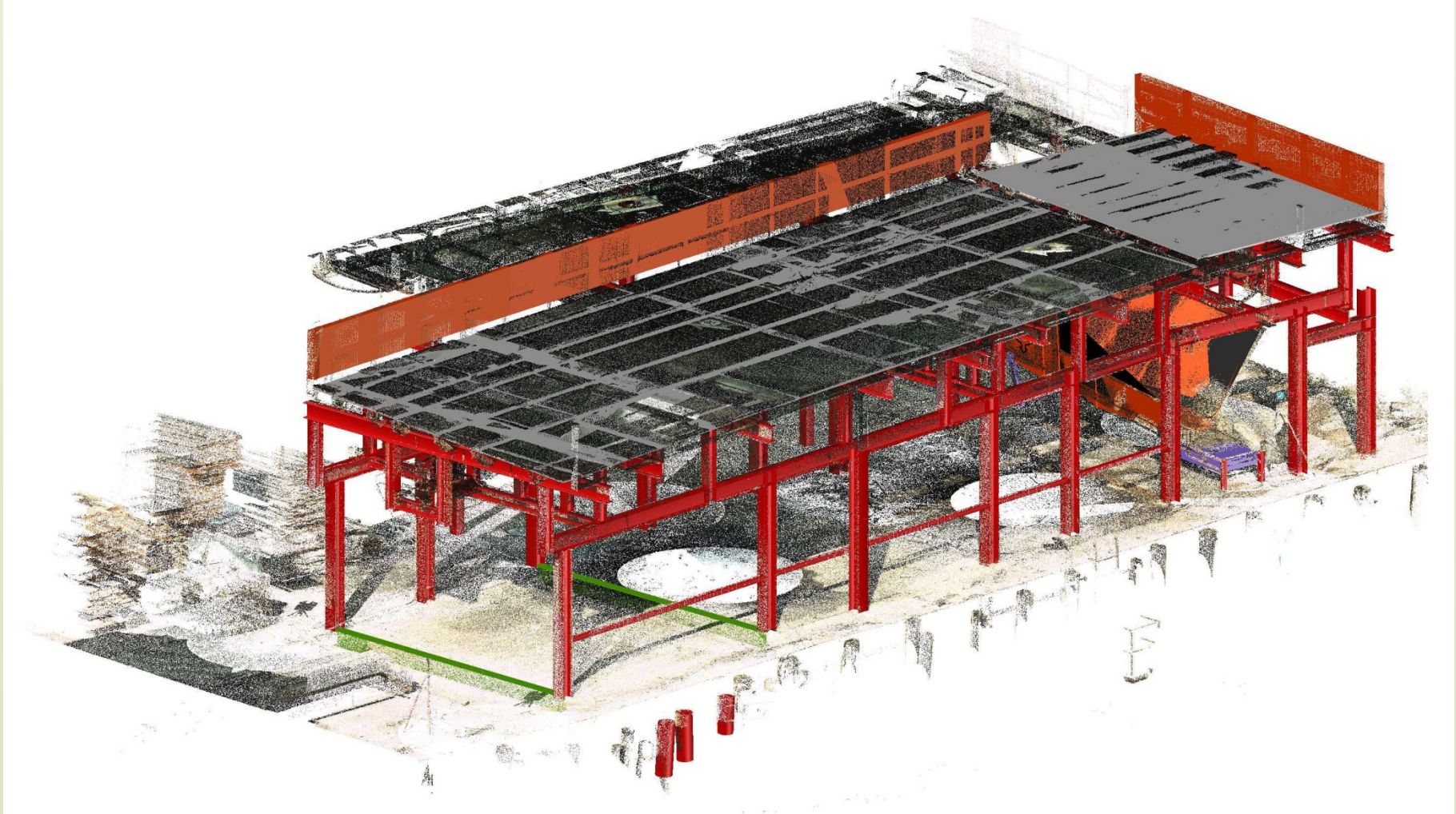


Parametrix
 1039 NORTH AVENUE, SUITE 100
 TACOMA, WA 98403
 T: 253.864.8800 F: 253.864.8700
 www.parametrix.com

PROJECT NAME
MARY'S RIVER LUMBER AND MONTESANO WWTP BANK STABILIZATION
 MONTESANO, WASHINGTON

DRAWING NO.
SCHEDULE A AND B SECTIONS AND DETAILS
 10 OF 12
C7

Overhead Log Deck – Removed & Salvaged

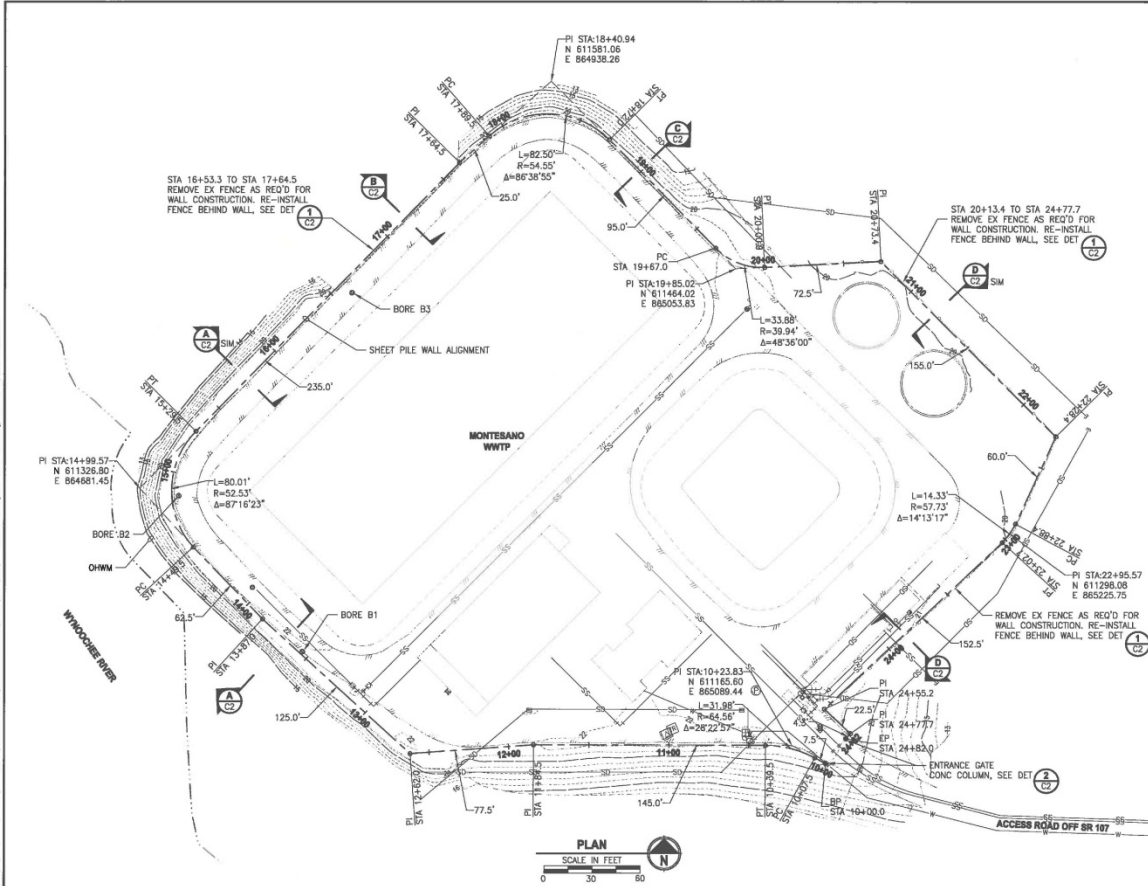




WWTP - Sheet Pile Wall



WWTP - Sheet Pile Wall



WWTP ALIGNMENT		
STATION	NORTHING	EASTING
STA 10+00.0	611154.34	865110.43
STA 10+07.5	611157.80	865103.77
STA 14+49.5	611289.86	864715.26
STA 10+39.5	611165.65	865073.11
STA 15+29.5	611362.35	864716.74
STA 11+84.5	611165.95	864928.11
STA 17+64.5	611530.33	864881.07
STA 12+62.0	611160.42	864850.81
STA 13+87.0	611244.88	864758.65
STA 17+89.5	611547.00	864899.70
STA 18+72.0	611544.56	864974.52
STA 19+67.0	611476.98	865041.29
STA 20+00.0	611464.85	865071.85
STA 20+73.4	611468.52	865144.25
STA 22+88.4	611304.42	865229.15
STA 23+02.7	611292.78	865220.89
STA 24+55.2	611188.40	865109.68
STA 22+28.4	611359.04	865253.98
STA 24+77.7	611172.98	865126.05
STA 24+82.0	611169.77	865123.15

1/16/13, 10:00 AM Project: Montesano WWTP - Sheet Pile Wall - Civil Engineering - 1/16/13 - 10:00 AM Project: Montesano WWTP - Sheet Pile Wall - Civil Engineering - 1/16/13 - 10:00 AM Project: Montesano WWTP - Sheet Pile Wall - Civil Engineering - 1/16/13 - 10:00 AM

REVISIONS	DATE	BY	DESIGNED
			R. HERMES
			DRAWN
			R. TAYLOR
			CHECKED
			APPROVED

ONE INCH AT FULL SCALE,
 IF NOT, SCALE ACCORDINGLY
 TEST DATE
 1/16/13
 13-1878-043
 NOVEMBER 2013



PROJECT NAME
 MARY'S RIVER LUMBER AND
 MONTESANO WWTP BANK STABILIZATION
 MONTESANO, WASHINGTON

SCHEDULE A
 SHEET PILE WALL ALIGNMENT

DRAWING NO.
 4 OF 12
 C1



WWTP - Sheet Pile Wall

City of Montesano

Home of the Tree Farm

- 10 Foot Vinyl Sheet pile. (30 to 60 day lead time)
- Provides protection to the proposed 500 - year storm event of 23.5'
- 20 Foot Aluminum Plank Barriers proposed for driveway entrance.
- Aluminum top rail add to the project as a bid alternate.

Permits Identified – Sheet Pile



- **Shoreline Substantial Development Permit**
- **State Environmental Policy Act**
- **JARPA**

Construction Schedule

- **Mandatory Pre-Bid Meeting - Today @ 1 pm**
- **Bid Opening – December 10th**
- **Notice to Proceed – December 21st.**
- **Steel Fabrication & Delivery - up to 120 days**
- **Construction Beginning – April, 2014**
- **60 working days – Completion July, 2014**

Estimated Project Cost

- \$4.5 Million to \$4.9 Million for Mary's River and WWTP Flood Protection

Discussion & Questions...