

The background of the slide is a light gray gradient with several realistic water droplets of various sizes scattered across it. The droplets have highlights and shadows, giving them a three-dimensional appearance. The main title is centered in a large, bold, black sans-serif font.

CHEHALIS RIVER BASIN FLOOD WARNING SYSTEM


UPDATE – DECEMBER 17, 2015

DAVID C. CURTIS, PH.D.

WEST CONSULTANTS



WEBSITE UPDATES

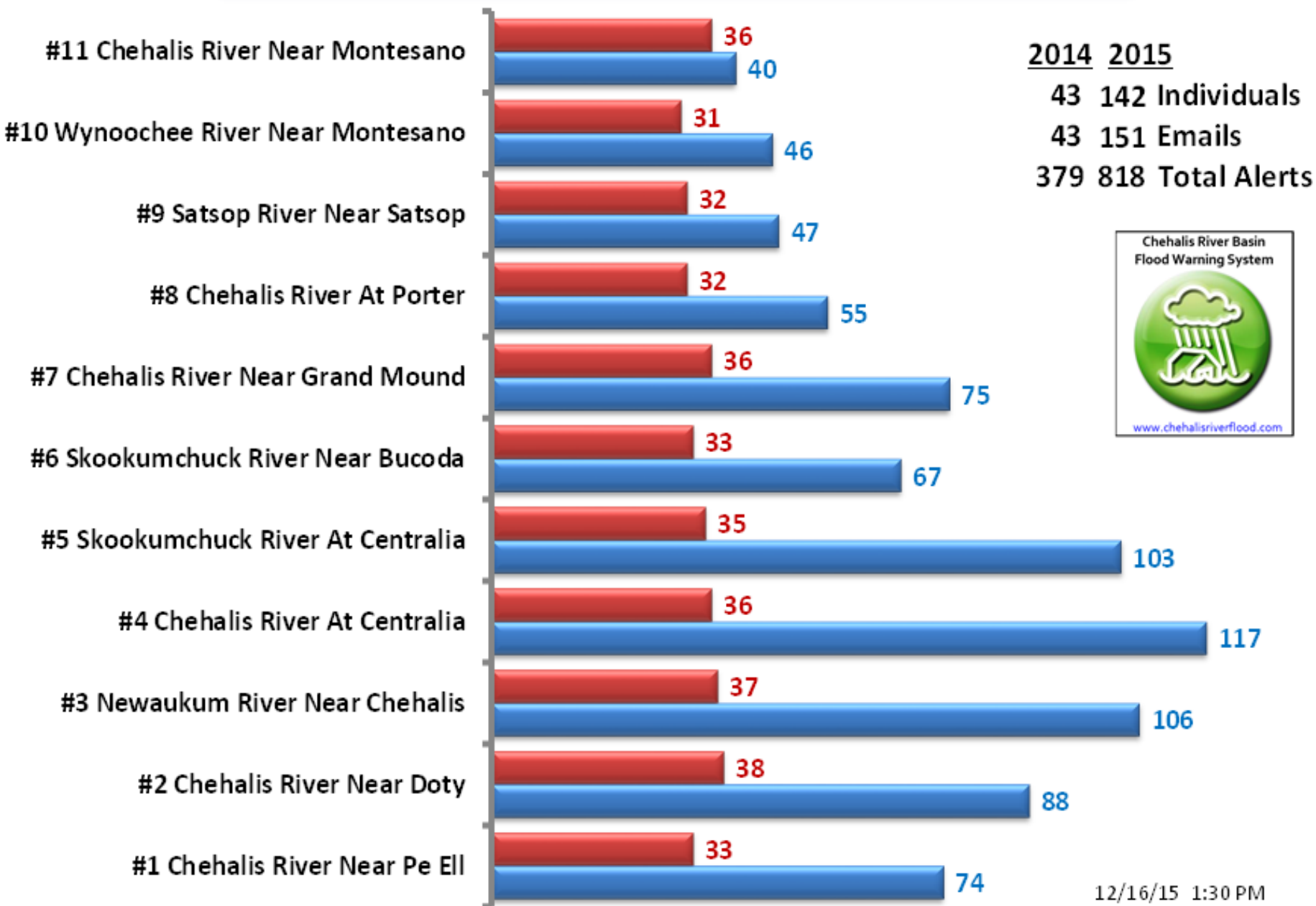
- NEW LOOK AND FEEL
 - NEW DATA GRAPHICS "ENGINE"
 - PAN AND ZOOM MAPS
 - NEW ADMIN TOOLS
- 

The background features a light gray gradient with several realistic water droplets of various sizes scattered in the corners. The droplets have highlights and shadows, giving them a three-dimensional appearance. The largest droplets are in the top-left and bottom-right corners, while smaller ones are scattered throughout.

OUTREACH

EMAIL ALERTS

Distribution of Requested Flood Alerts



TEST SURVEY

- ORGANIZATIONS/INDIVIDUALS
- AGES - 21-90
- DEVICES – ALL TYPES
- REASONS
 - NEWS
 - RESIDENCE/BUSINESS
 - COMMUTE
 - FAMILY

FEEDBACK

- VERY POSITIVE
- SUGGESTIONS
 - ELIMINATE DUPLICATES
 - ELIMINATE "RETRIGGERED" ALARMS
 - ADD ADDITIONAL INFORMATION
 - ADD FEEDBACK FORM
 - EXPAND MAPPING

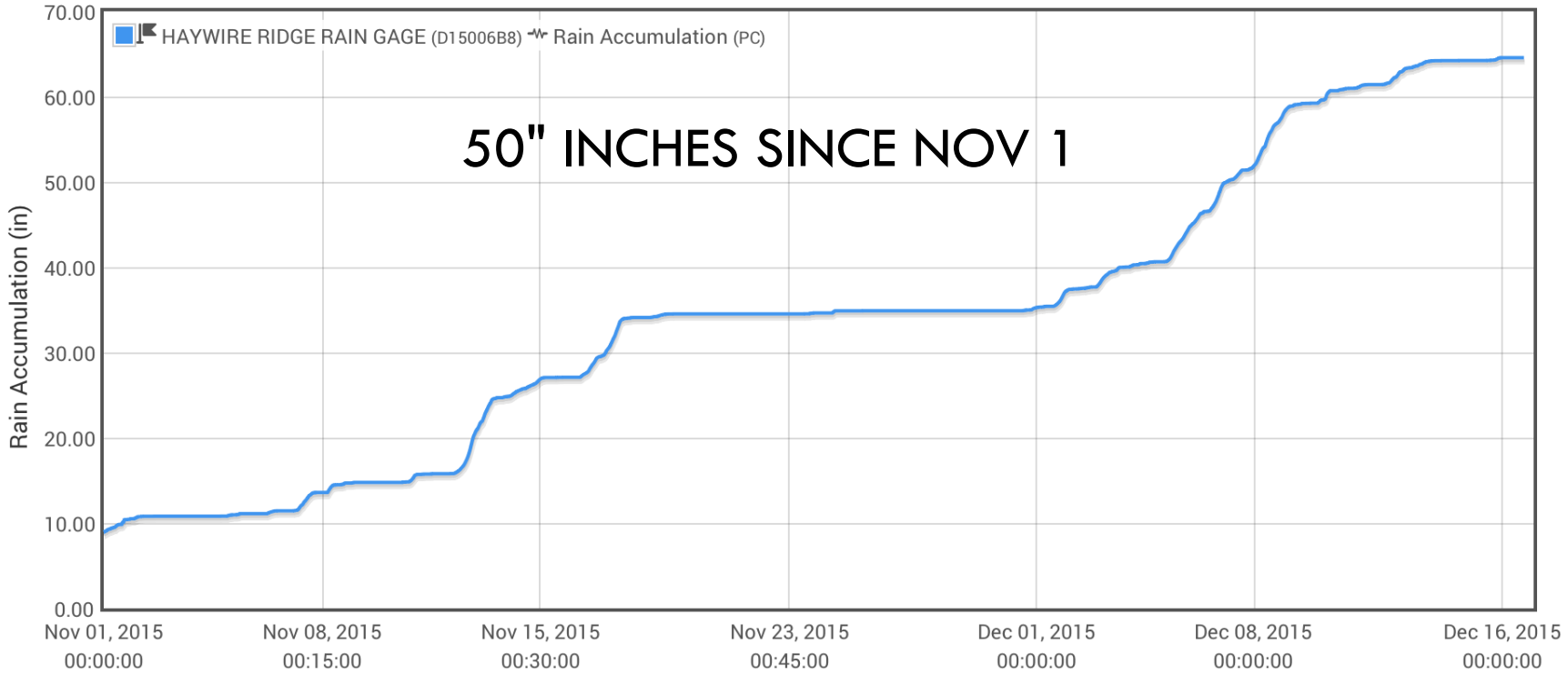
Reload

Rain Accumulation (PC)

HAYWIRE RIDGE RAIN GAGE (D15006B8)

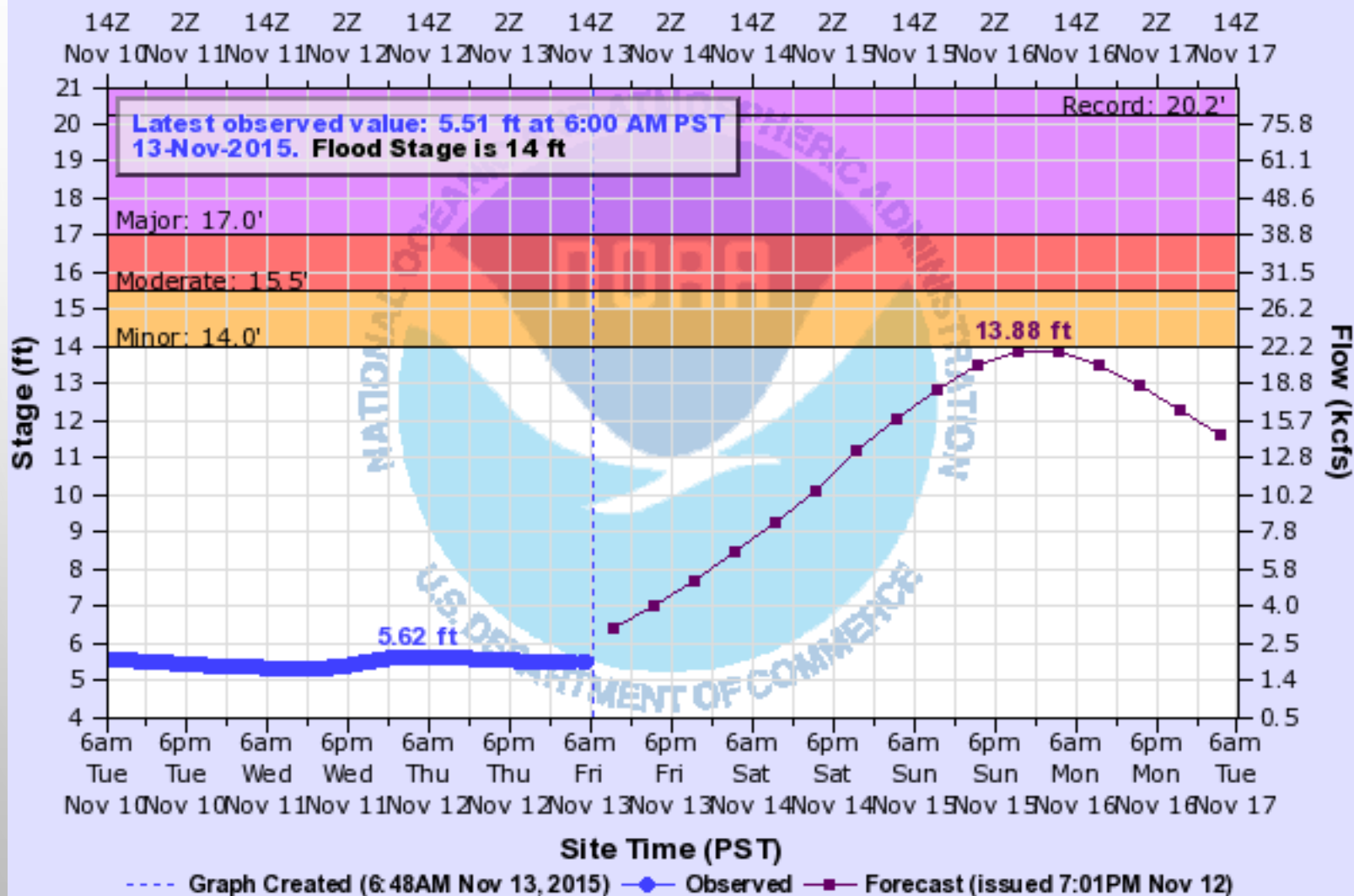
November 1, 2015 - December 16, 2015

Markers Legend



CHEHALIS RIVER NEAR GRAND MOUND

Universal Time (UTC)



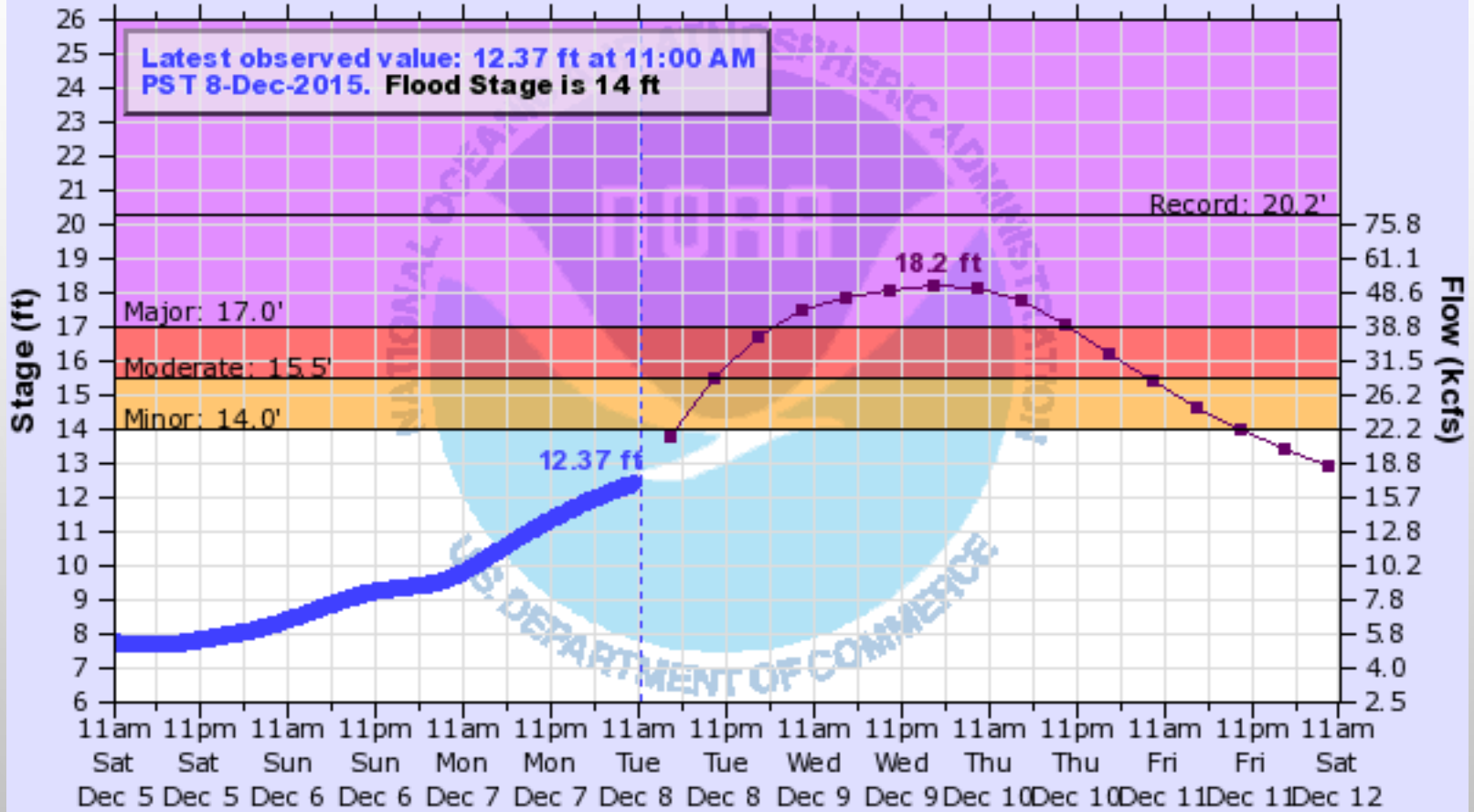
CGMW1(plotting HGIRG) "Gage 0" Datum: 123.65'

Observations courtesy of US Geological Survey

CHEHALIS RIVER NEAR GRAND MOUND

Universal Time (UTC)

19Z 7Z 19Z 7Z 19Z 7Z 19Z 7Z 19Z 7Z 19Z 7Z 19Z 7Z 19Z 7Z 19Z
 Dec 5 Dec 6 Dec 6 Dec 7 Dec 7 Dec 8 Dec 8 Dec 9 Dec 9 Dec 10 Dec 10 Dec 11 Dec 11 Dec 12 Dec 12



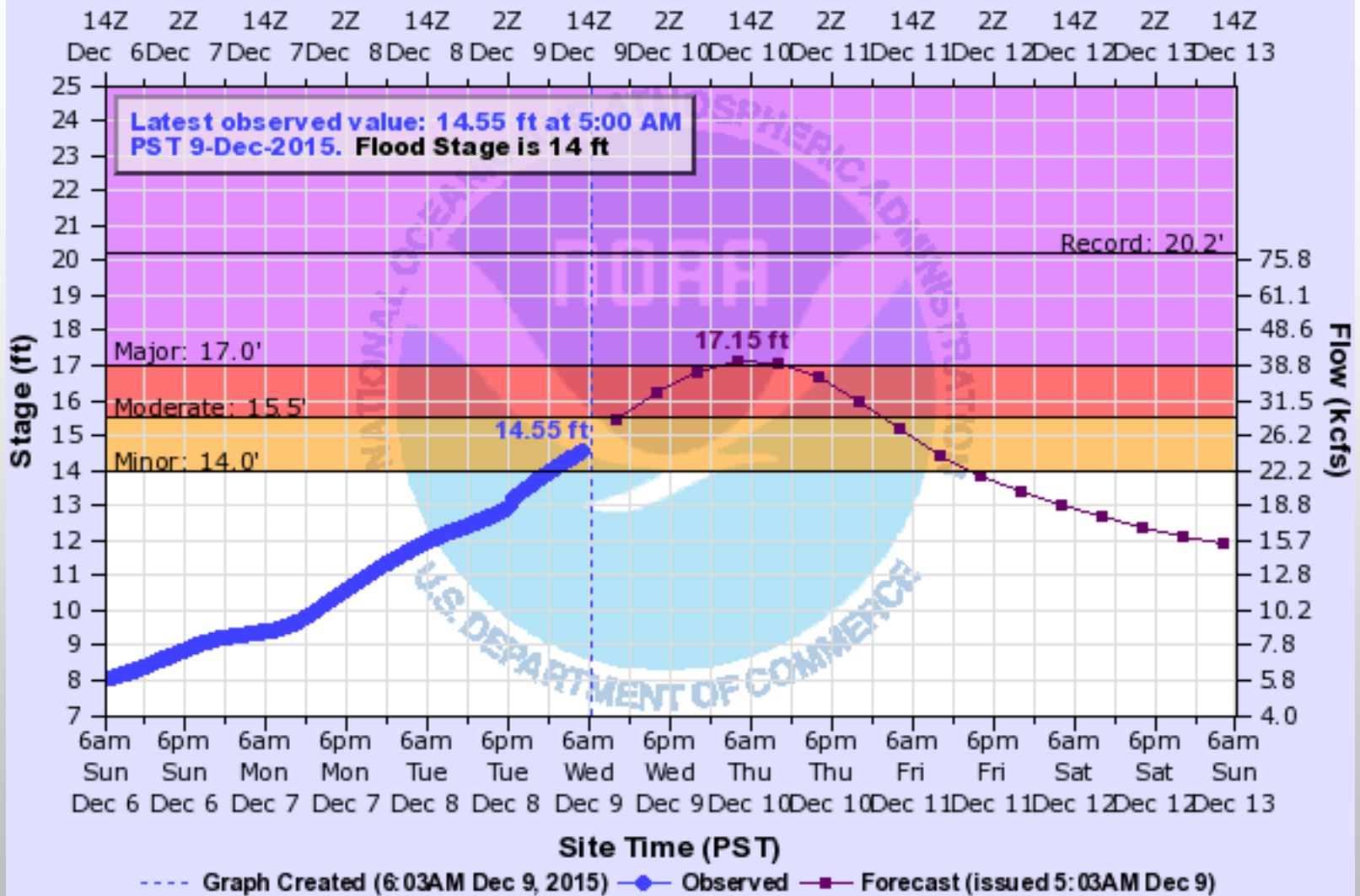
----- Graph Created (11:48AM Dec 8, 2015) ● Observed ■ Forecast (issued 11:12AM Dec 8)

CGMW1(plotting HGIRG) "Gage 0" Datum: 123.65'

Observations courtesy of US Geological Survey

CHEHALIS RIVER NEAR GRAND MOUND

Universal Time (UTC)

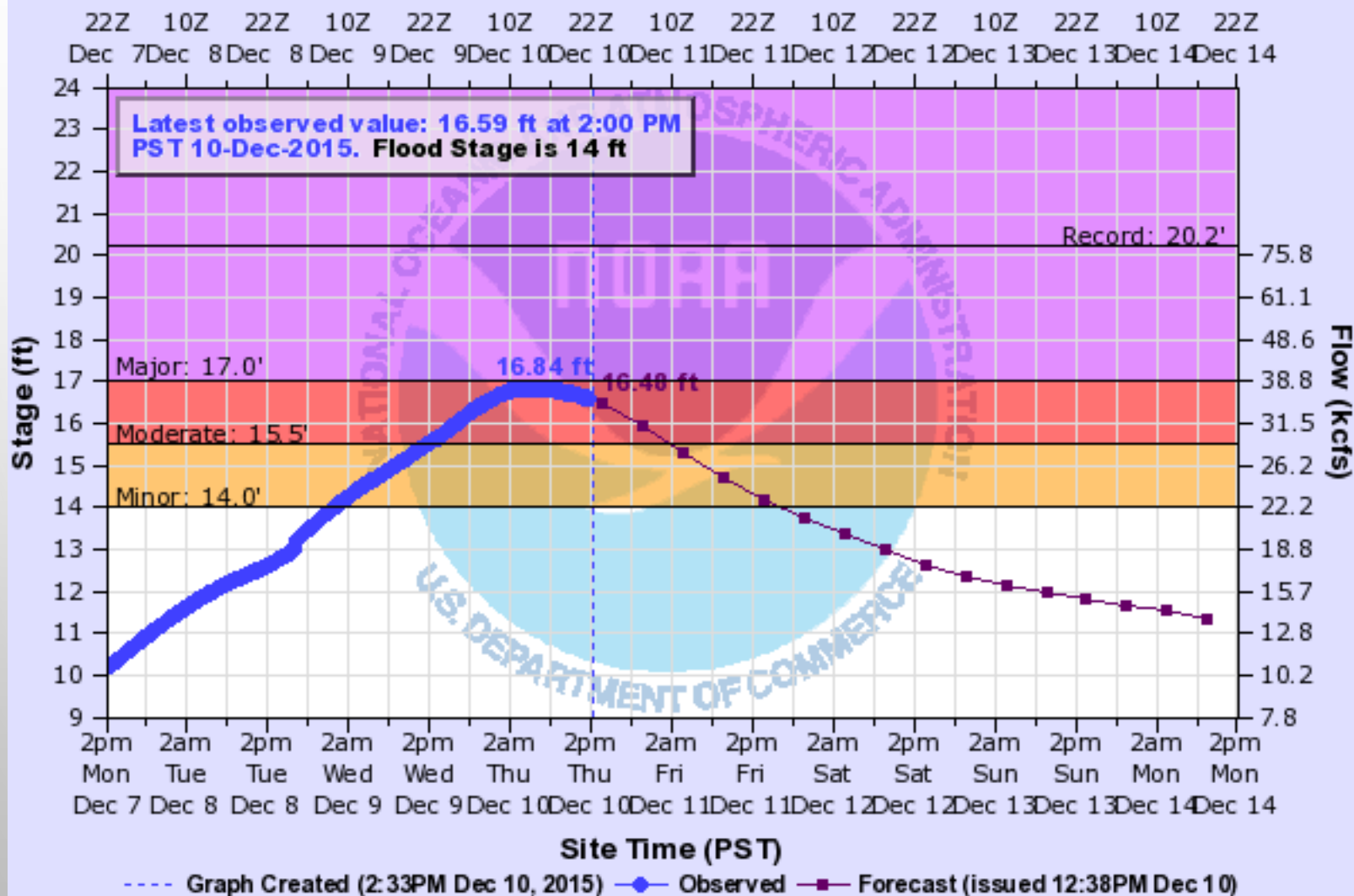


CGMW1(plotting HGIRG) "Gage 0" Datum: 123.65'

Observations courtesy of US Geological Survey

CHEHALIS RIVER NEAR GRAND MOUND

Universal Time (UTC)



CGMW1(plotting HGIRG) "Gage 0" Datum: 123.65'

Observations courtesy of US Geological Survey

The background features a light gray gradient with several realistic water droplets of various sizes scattered in the corners. The droplets have highlights and shadows, giving them a three-dimensional appearance. The text is centered in the middle of the page.

NWS INUNDATION MAPS



National Oceanic and Atmospheric Administration's National Weather Service



Site Map

News

Organization

Search

NWS

All NOAA

Go

Local forecast by
"City, St"

City, St

RSS RSS Feeds

- Warnings
- Current
- By State/County...
- UV Alerts

- Observations
- Radar
- Satellite
- Snow Cover
- Surface
- Weather...
- Observed Precip

- Forecasts
- Local
- Graphical
- Aviation
- Marine
- Hurricanes
- Severe Weather
- Fire Weather

- Text Messages
- By State
- By Message Type
- National

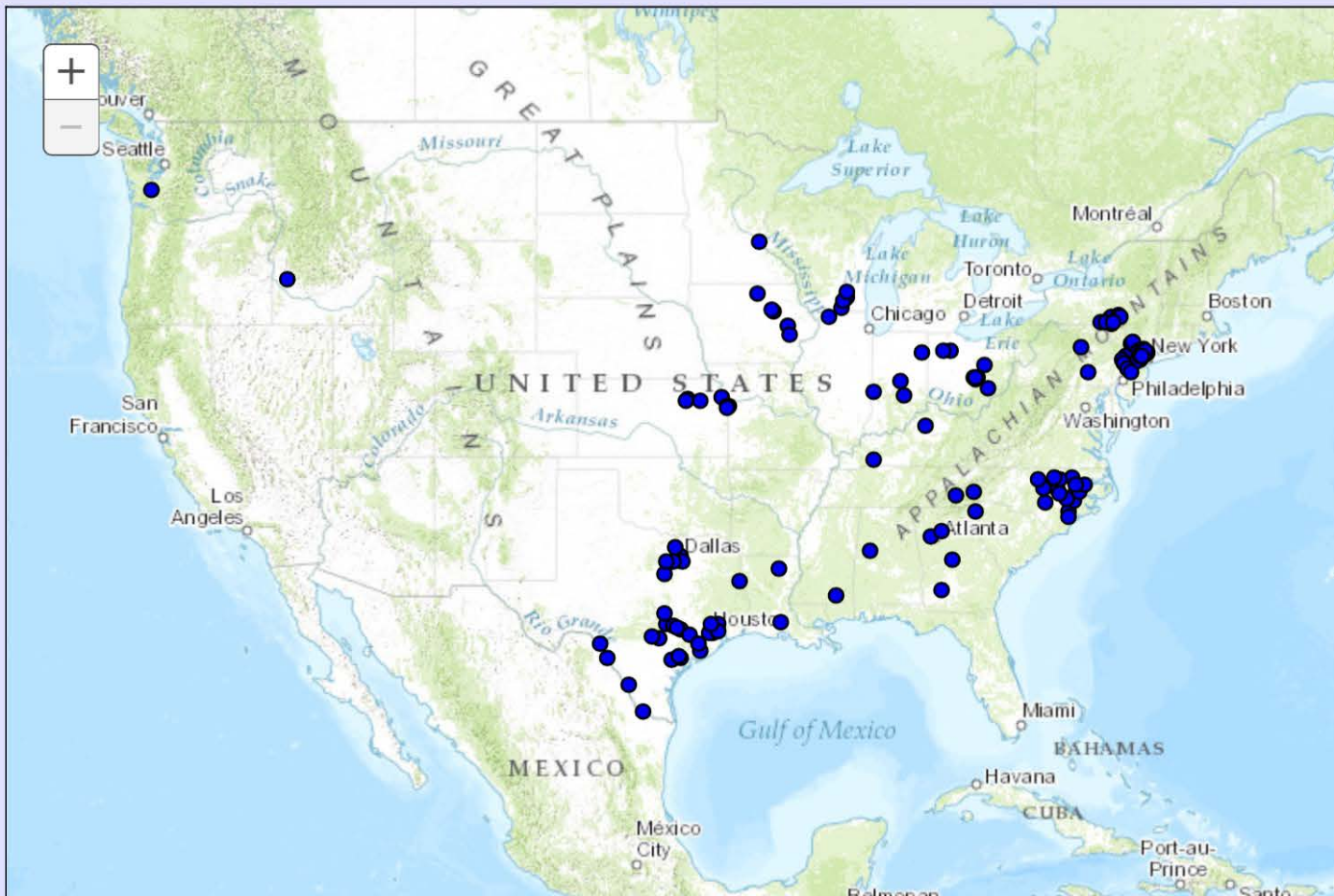
- Forecast Models
- Numerical Models
- Statistical
- Models...
- MOS Prod
- GFS-LAMP Prod

- Climate
- Past Weather
- Predictions
- Weather Safety

National Observations

Inundation Locations

NOAA PARTNERED GUIDELINES FOR THE DEVELOPMENT OF ADVANCED HYDROLOGIC PREDICTION SERVICE FLOOD INUNDATION MAPPING



Inundation Gauges

About Inundation

FAQ

User Guide

User guide video on



Map Help

Disclaimer



Chehalis River at Centralia, WA (CENW1)

- National Observations
- Inundation Locations
- View Inundation Site

Weather Forecast Office Seattle, WA

Northwest River Forecast Center

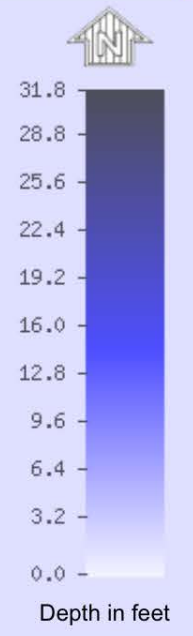
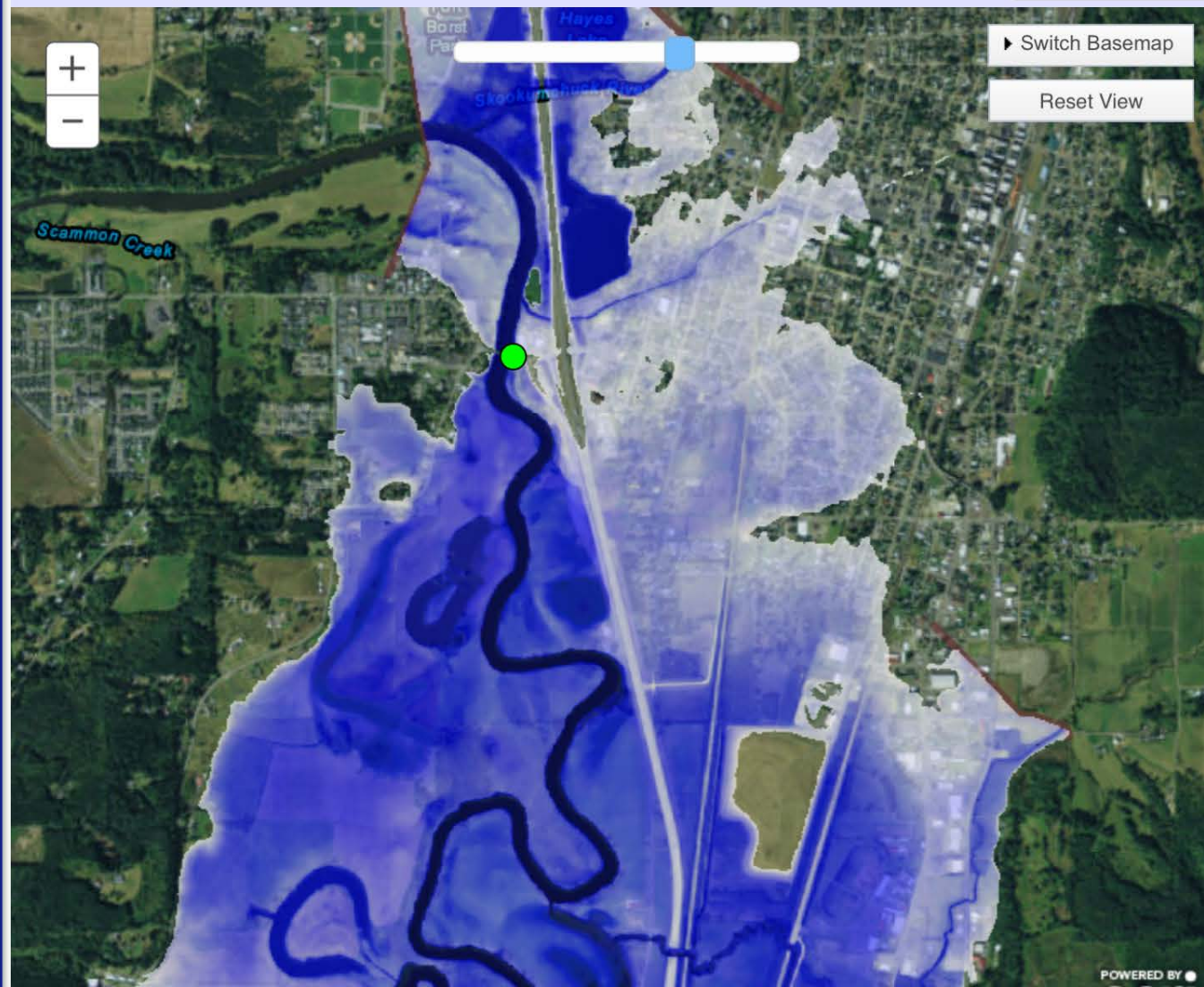
Data Type

- Inundation Levels
- Flood Categories
- Current/Forecast

- Hydrograph
- River at a Glance
- Download
- Inundation Mapping
- Probability Information

Print this map

Find address or location



Gauge Location

- About Inundation
- Download Dataset(s)
- FAQ
- User Guide
- Inundation Sites
- Inundation Legend

User guide video on YouTube

Inundation Levels

NAVD88	Stage
179.5	76.1
Record Crest: 74.78 ft	
178.0	74.6
177.0	73.6
176.0	72.6

Major Flooding Begins

175.0	71.6
174.0	70.6
173.0	69.6
172.0	68.6

Moderate Flooding Begins

171.0	67.6
170.0	66.6
169.0	65.6

Minor Flooding Begins

168.0	64.6
167.0	63.6
166.0	62.6
165.0	61.6
164.0	60.6

* = Extended rating

Inundation Feedback

Provided in Partnership with

Chehalis River at Centralia, WA (CENW1)

- National Observations
- Inundation Locations
- View Inundation Site

Weather Forecast Office Seattle, WA

Northwest River Forecast Center

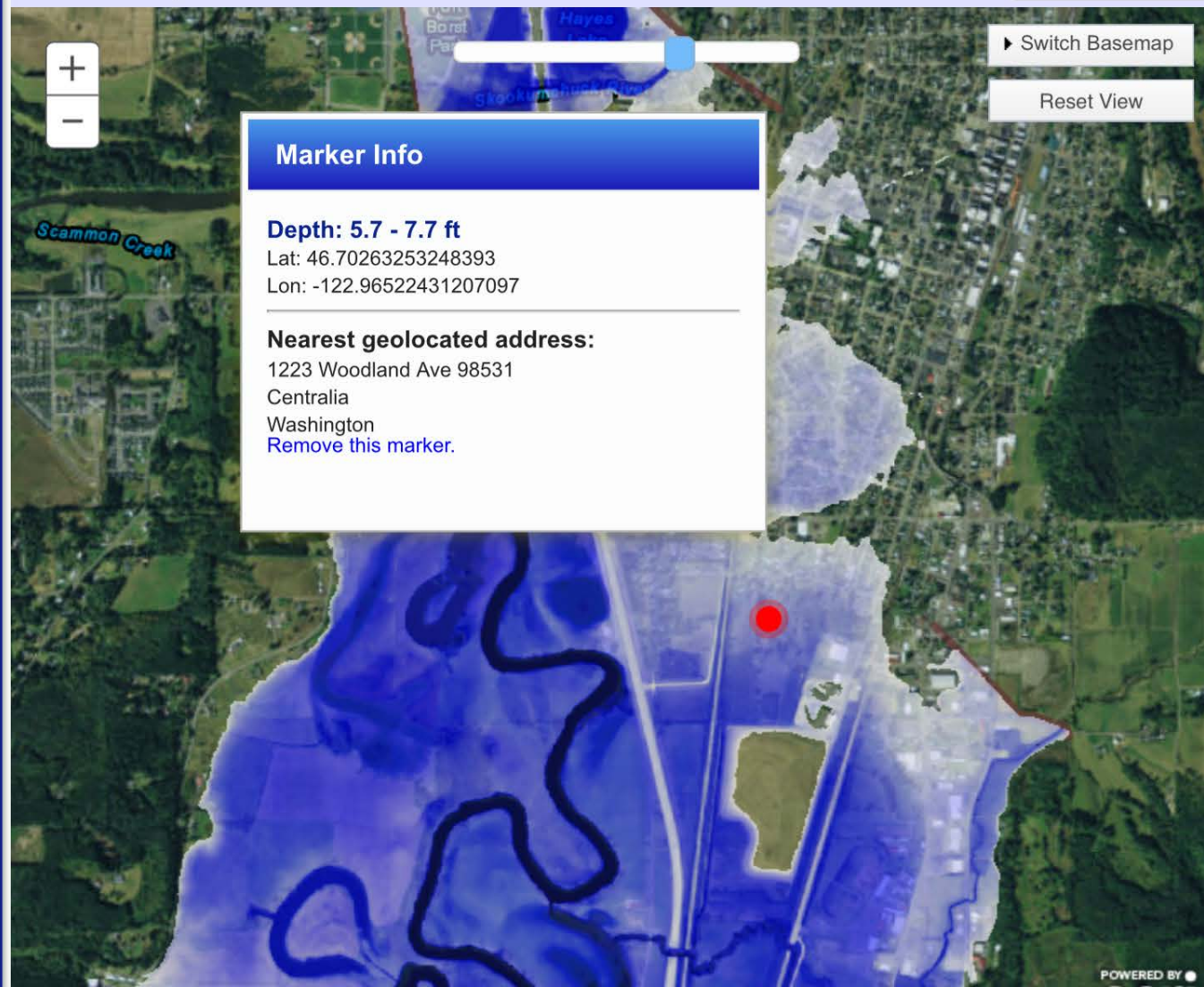
Data Type

- Inundation Levels
- Flood Categories
- Current/Forecast

- Hydrograph
- River at a Glance
- Download
- Inundation Mapping**
- Probability Information

Print this map

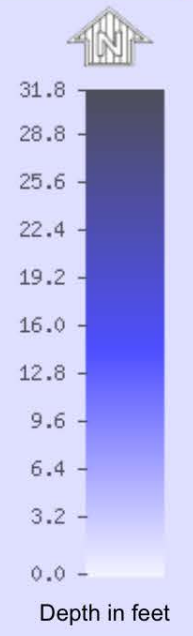
Find address or location



Marker Info

Depth: 5.7 - 7.7 ft
 Lat: 46.70263253248393
 Lon: -122.96522431207097

Nearest geolocated address:
 1223 Woodland Ave 98531
 Centralia
 Washington
[Remove this marker.](#)



Gauge Location

- About Inundation
- Download Dataset(s)
- FAQ
- User Guide
- Inundation Sites
- Inundation Legend

User guide video on YouTube

Inundation Levels

NAVD88 Stage

179.5	76.1
Record Crest: 74.78 ft	
178.0	74.6
177.0	73.6
176.0	72.6

Major Flooding Begins

175.0	71.6
174.0	70.6
173.0	69.6
172.0	68.6

Moderate Flooding Begins

171.0	67.6
170.0	66.6
169.0	65.6

Minor Flooding Begins

168.0	64.6
167.0	63.6
166.0	62.6
165.0	61.6
164.0	60.6

* = Extended rating

Inundation Feedback

Provided in Partnership with

- Flood Categories
- Current/Forecast

Print this map Find address or location

Inundation Levels

NAVD88 Stage

179.5 76.1

Record Crest: 74.78 ft

178.0 74.6

177.0 73.6

176.0 72.6

Major Flooding Begins

175.0 71.6

174.0 70.6

173.0 69.6

172.0 68.6

Moderate Flooding Begins

171.0 67.6

170.0 66.6

169.0 65.6

Minor Flooding Begins

168.0 64.6

167.0 63.6

166.0 62.6

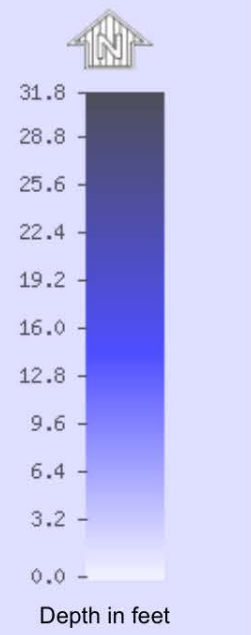
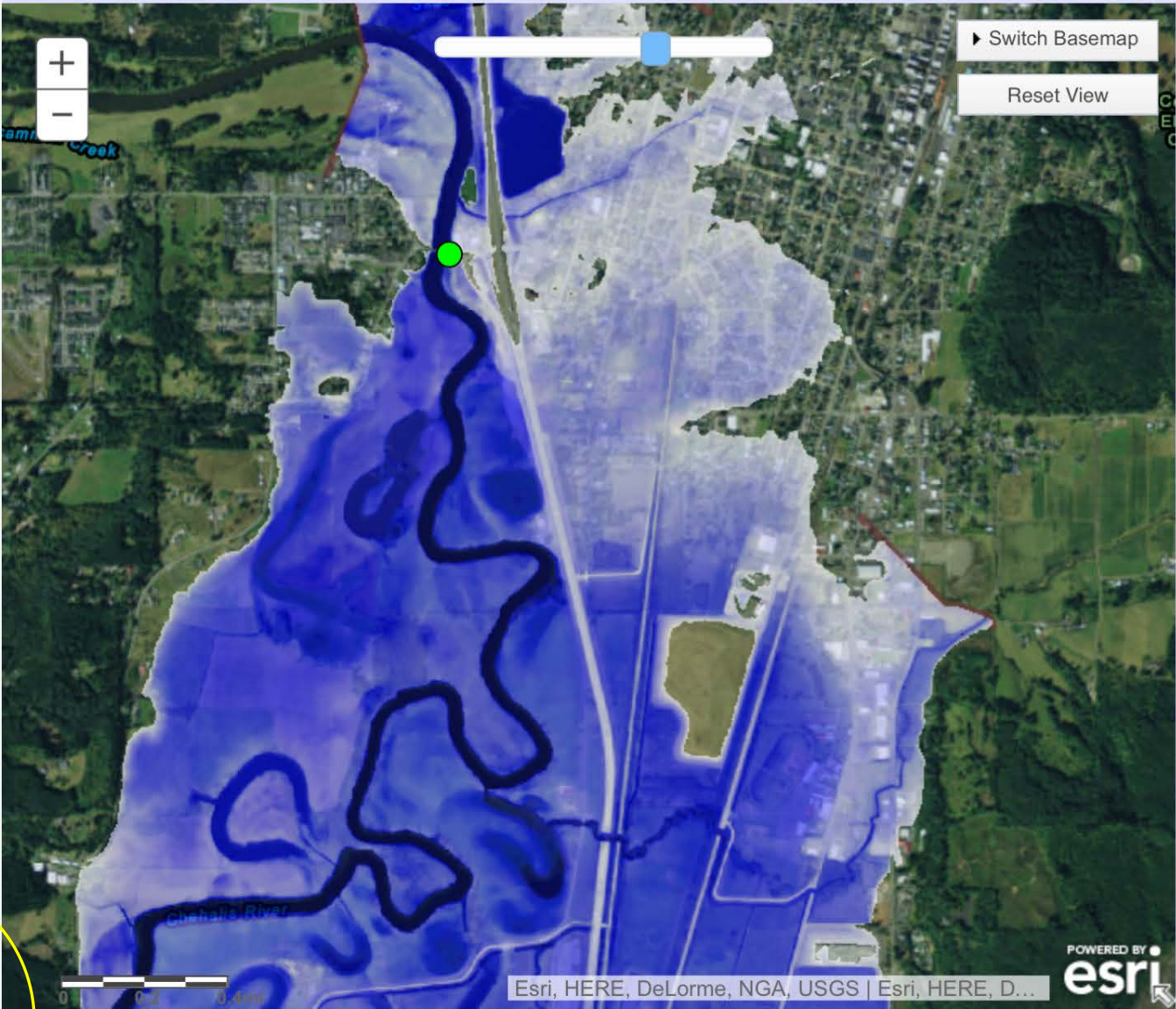
165.0 61.6

164.0 60.6

* = Extended rating

Inundation Feedback

Provided in Partnership with



Gauge Location

- About Inundation
- Download Dataset(s)
- FAQ
- User Guide
- Inundation Sites
- Inundation Legend



What is UTC time?

Map Help

Disclaimer



Click on mapped inundation to see water depth values for that location, or hold shift and drag to zoom to area.

Current Stage:
55.0 ft at 12/16/2015 18:30:00 UTC

Selected Inundation
NAVD88: 178.0 ft
stage: 74.6 ft

Mouse Location
Depth: 5.7 - 7.7 ft



Esri, HERE, DeLorme, NGA, USGS | Esri, HERE, D...

UPDATE - Sign-Up To Receive Flood Warning System Email Alerts - New site added.

Be aware, be prepared -- The Chehalis River Basin Flood Warning System (www.chehalisriverflood.com) has the capability to send email alerts to anyone interested in receiving notification about rising river levels from key river gages in the Chehalis Basin. Please [click here](#) to learn more about how to sign up to receive email gage alerts. To see gage alert sign-up activity across the basin, [click here](#).

Comments or questions can be directed to Scott Boettcher, Chehalis River Basin Flood Authority, 360/480-6600, scottb@sbgh-partners.com. Thank you.

chehalis - 11/16/2015 15:51:43

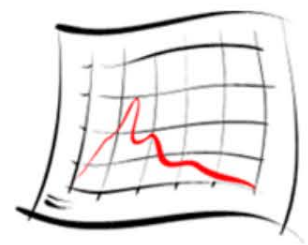
Chehalis River Basin Flood Warning System



Weather Forecast



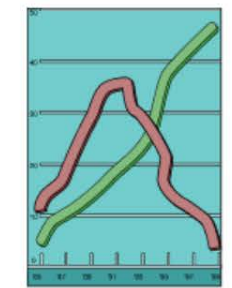
Rainfall Forecast



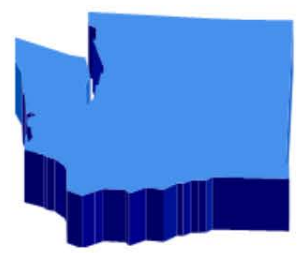
River Forecast



Flood Maps



Gage Data Graphs



Gage Data Maps



Chehalis Flood Authority



Road Conditions



USGS Gages



Question?



The background is a light gray gradient. In the top-left and bottom-right corners, there are several realistic-looking water droplets of various sizes, some overlapping. The droplets have highlights and shadows, giving them a three-dimensional appearance.

Unrelenting outreach.

I want that!