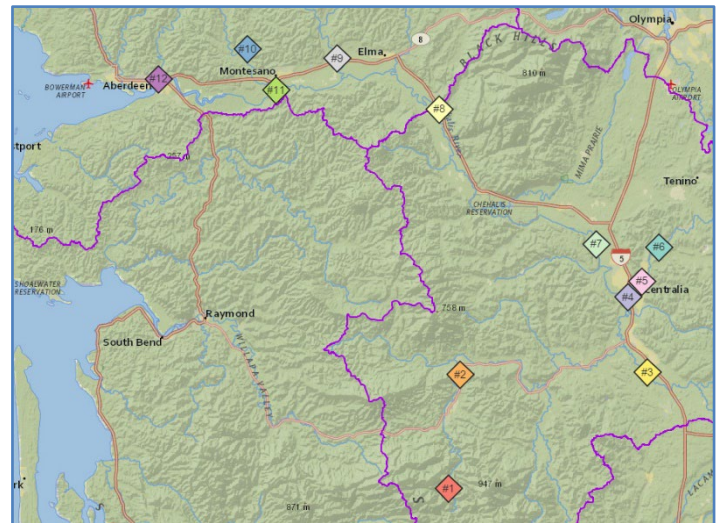


2022/23 Flood Season: Flood Warning System Email Alerts Sign-Up Today!



Chehalis River Basin Flood Warning System sends automatic email alerts about rising river levels at the following gage sites:

- #1 Chehalis River below Thrash Creek -- <https://bit.ly/2JVSzuj>.
- #2 Chehalis River near Doty -- <https://bit.ly/38HTeKq>.
- #3 Newaukum River near Chehalis -- <https://bit.ly/3pzrmhF>.
- #4 Chehalis River at Centralia -- <https://bit.ly/2lq8SPW>.
- #5 Skookumchuck River at Centralia -- <https://bit.ly/3pl1wO2>.
- #6 Skookumchuck River near Bucoda -- <https://bit.ly/2H3lATY>.
- #7 Chehalis River near Grand Mound -- <https://bit.ly/36zBoq1>.
- #8 Chehalis River at Porter -- <https://bit.ly/3ktep4Y>.
- #9 Satsop River near Satsop -- <https://bit.ly/2Us4emC>.
- #10 Wynoochee River near Montesano -- <https://bit.ly/32HnuB3>.
- #11 Chehalis River near Montesano -- <https://bit.ly/36CL9Ed>.
- #12 Wishkah River at Aberdeen -- <https://bit.ly/3w63JR8>.



(Click [here](#) to open Gage Alerts Map.)

Sign-Up to receive email alerts from any of the above gage sites by emailing scottb@sbgh-partners.com and dcurtis@westconsultants.com:

- Your name.
- Your email.
- The gage site number(s) you are interested in.

Questions can be directed to Scott Boettcher (Staff, Chehalis Flood Authority), scottb@sbgh-partners.com, 360/480-6600.

More Information:

Chehalis River Basin Flood Authority www.ezview.wa.gov/chehalisfloodauthority	Flood Warning System www.chehalisriverflood.com	Gage Alerts Map http://arcg.is/2fbhZyX
---	---	---

Chehalis River Basin Flood Warning System

Why?

Following a devastating flood in December 2007, Chehalis River Basin stakeholders intensified efforts to mitigate flood risk in one of the most flood-impacted watersheds in the State of Washington by forming the **Chehalis River Basin Flood Authority (CRBFA)**. The CRBFA quickly determined improvements were needed to the existing flood forecast and warning system for the entire Chehalis River Basin. The region required a more reliable information network than what had become a “word of mouth” warning process.

The Players

On behalf of the CRBFA, WEST Consultants worked with community groups, Indian tribes, and local governments within the Basin to assess their current flood preparedness practices and needs. In addition, flood forecasting and related programs of the National Weather Service, the U.S. Geological Survey, the U.S. Department of Agriculture Natural Resources Conservation Service, and the WA State Departments of Ecology and Transportation were reviewed.

The findings led to a plan for improving the identification of flood threats, agency coordination, and communication with the public. The plan included an Internet-based data collection, visualization, and dissemination tool plus additional rainfall, temperature, and river monitoring stations to fill gaps in existing observation networks in the Chehalis River Basin.



The System

A publicly accessible, Web-based flood data site is now available through Conrail. Rain, stream, reservoir, wind, temperature, and other weather information are collected, displayed, and used real-time. Users can access current Basin conditions along with latest National Weather Service river forecasts, local road closures from WA State Department of Transportation and other flood preparedness information from federal, state, and local sources.

Flood inundation maps show the public, as well as government officials where flooding is to be expected at each forecasted river stage. The website (www.chehalisriverflood.com) provides REAL TIME access to flooding data, putting the data in local context, allowing residents to be better prepared.

Information can be displayed on Web-enabled computers and mobile devices (smart phones, tablets).

Ten new automated rain gages, ten new temperature sensors, Skookumchuck Reservoir elevations, two additional stream gages and three new webcams have been added to existing flood threat detection networks. Data from more than 250 weather and river sensors in the Basin and nearby areas are now available.

Frequently Asked Questions

www.chehalisriverflood.com

How do I find weather forecasts for my neighborhood?

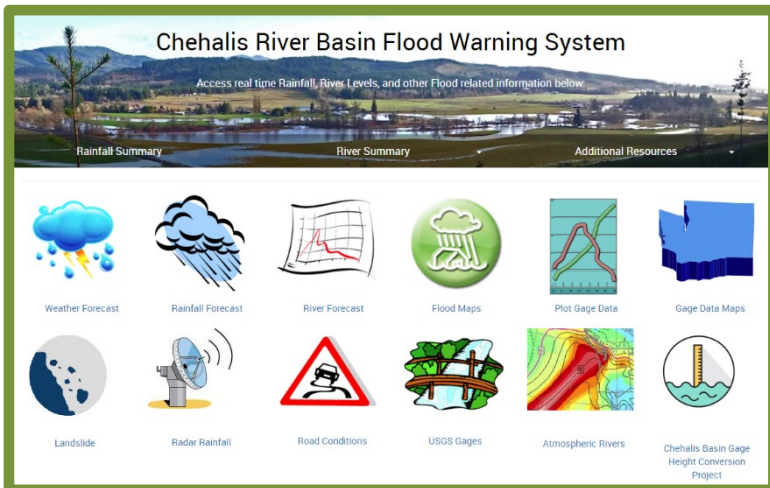
Once at the home page, click on the Weather Forecast (thunder cloud) icon. That will link you to the National Weather Service Forecast page for the Seattle area. Click on the map to show the latest forecast for your locality.

How do I find rainfall forecasts for my neighborhood?

At Home page, click on Rainfall Forecast (rain cloud) icon to bring up 10-day forecast maps from the National Weather Service, Northwest River Forecast Center. The first column of maps shows precipitation. The following columns show maximum temperature (daily high temperature), minimum temperature (daily low temperature), and daily freezing level.

How do I find river level forecasts for my neighborhood?

At Home page, click on River Forecast (graph with red line) icon which will take you to National Weather Service Advanced Hydrologic Prediction Service. Click on gage icon closest to your neighborhood (i.e., Porter, Grand Mound, Centralia, Doty, and Pe Ell on the Chehalis; Bucoda and Centralia on the Skookumchuck, and the Newaukum near Chehalis) to view the most recent river hydrograph for that area so you can follow the river's level in your neighborhood.



How do I find flood inundation maps for my neighborhood?

Go to Flood Maps link (circular green icon) from home page and select your region from "Select a gage location" pull down menu at top of flood basin map. For example, select Chehalis River at Centralia. Current river elevation or stage is shown in upper left. Use left/right arrow keys next to river elevation to move forward and backward through the forecast period. For inundation maps, hover your mouse over river stages in left-hand column. Inundation area for that stage appears. Zoom and pan for closer views.

What other information is on this website?

Chehalis River Basin Flood Warning System website includes links to CRBFA, Chehalis River Basin Flood Resources, USGS gage data, County emergency management, landslide monitoring, WSDOT's travel advisory websites, and latest Doppler radar readings, maps, and gage location information. Also, new dashboards are available showing webcams, river cross-section displays, and more.

Need more information?

Scott Boettcher

Staff, Chehalis River Basin Flood Authority
360/480-6600 – scottb@sbgh-partners.com

David Curtis

Flood Warning System Technical Consultant
916/932-7402 – dcurtis@westconsultants.com