

An aerial photograph of a rural landscape. The scene is dominated by vibrant green agricultural fields. A winding river or stream flows through the landscape, bordered by trees and grass. In the center, there is a small farmstead with several buildings and a dirt road. The background shows more fields and distant hills under a clear sky. The image is overlaid with a semi-transparent blue and green gradient at the top and bottom.

# Chehalis Basin Strategy

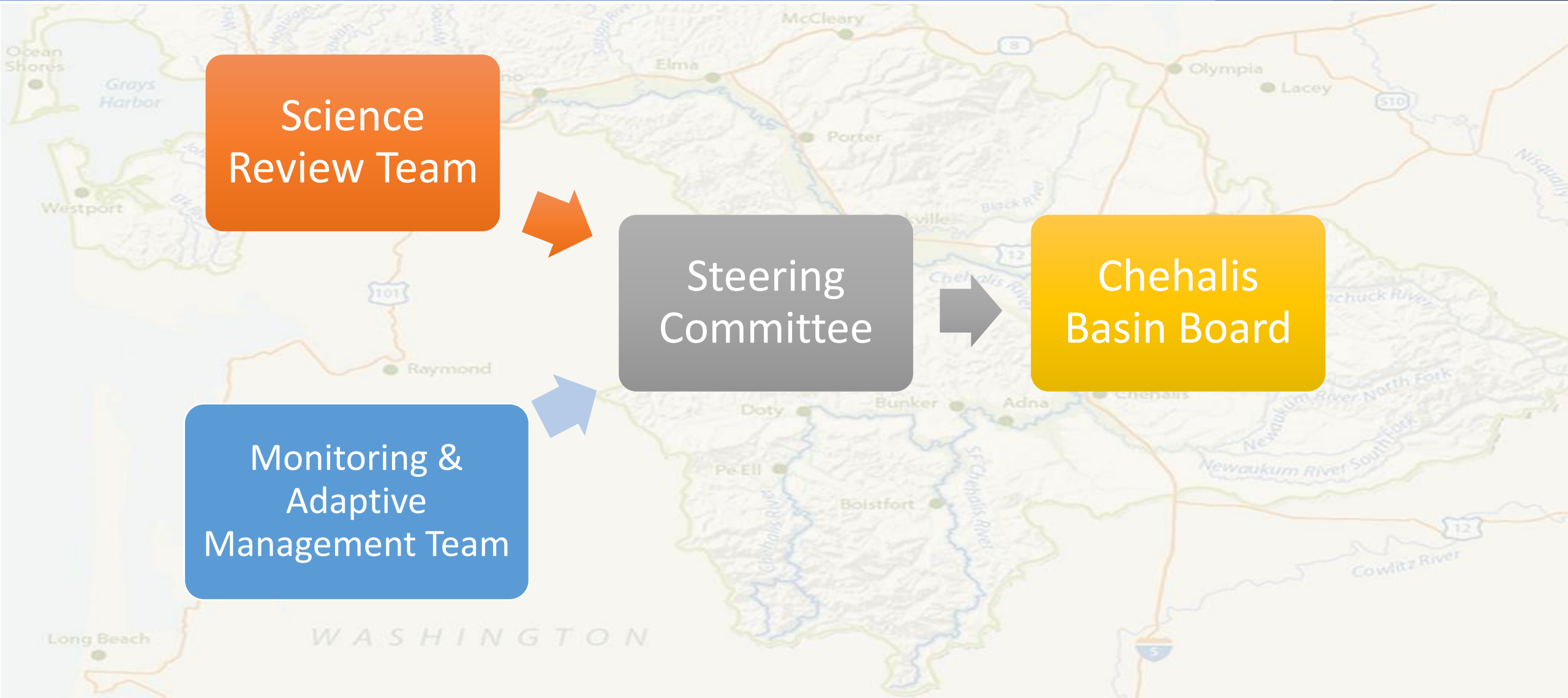
## Phase 1 Aquatic Species Restoration Plan (ASRP)

January 23, 2020

# Our Mission in Action



# ASRP Development Roles



# The Plan and Process

## Science Based

- Directly informs planning
- Research informs prioritization

## Process focused

- Restore habitat forming processes
- Support multiple species

## Roadmap for future actions

- ASRP as a tool for practitioners and investment

## Chehalis Basin Strategy

Aquatic Species Restoration Plan



Aquatic Species Restoration Plan Steering Committee

Phase I: November 2019

Publication #19-06-009

# Plan Approach

## **Habitat and Process Protection**

*Protect intact ecosystems, unique habitats, and strategic areas that support critical ecosystem functions and priority species.*

## **Restoration**

*Restore ecosystem functions to support native aquatic and semi-aquatic species.*

## **Community Planning**

*Effectively plan for current and future conditions in the Chehalis Basin.*

## **Community Involvement**

*Engage landowners and Chehalis Basin communities to ensure a successful plan and support implementation of actions.*

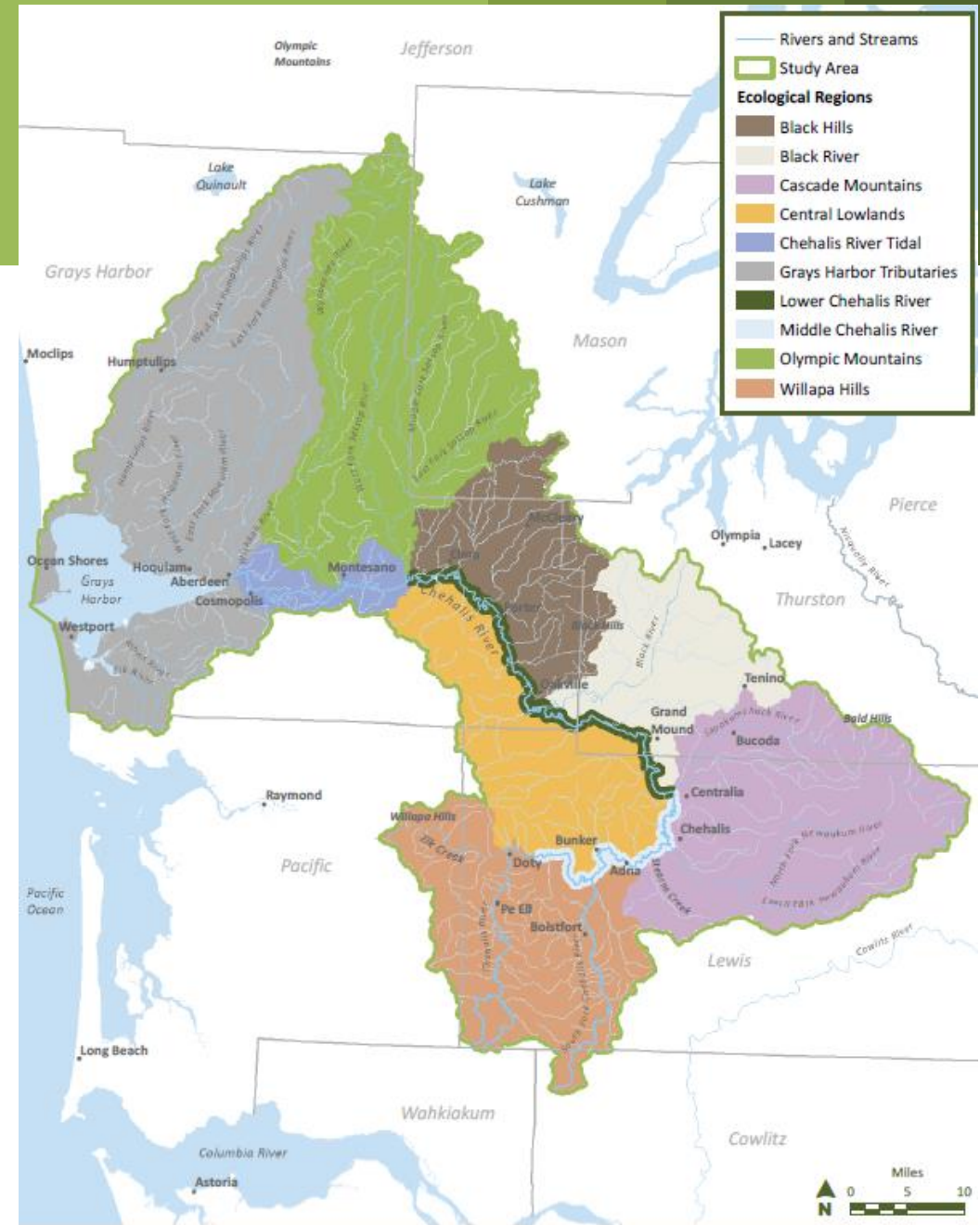
## **Institutional Capacity**

*Build institutional capacity of existing organizations for restoration, protection, and planning processes to ensure the ASRP is a community-based restoration program.*

# Development Process

Basin examined as 10 ecological regions based on:

- Geology
- Topography
- Climate
- Hydrologic regime
- Channel characteristics
- Aquatic species use



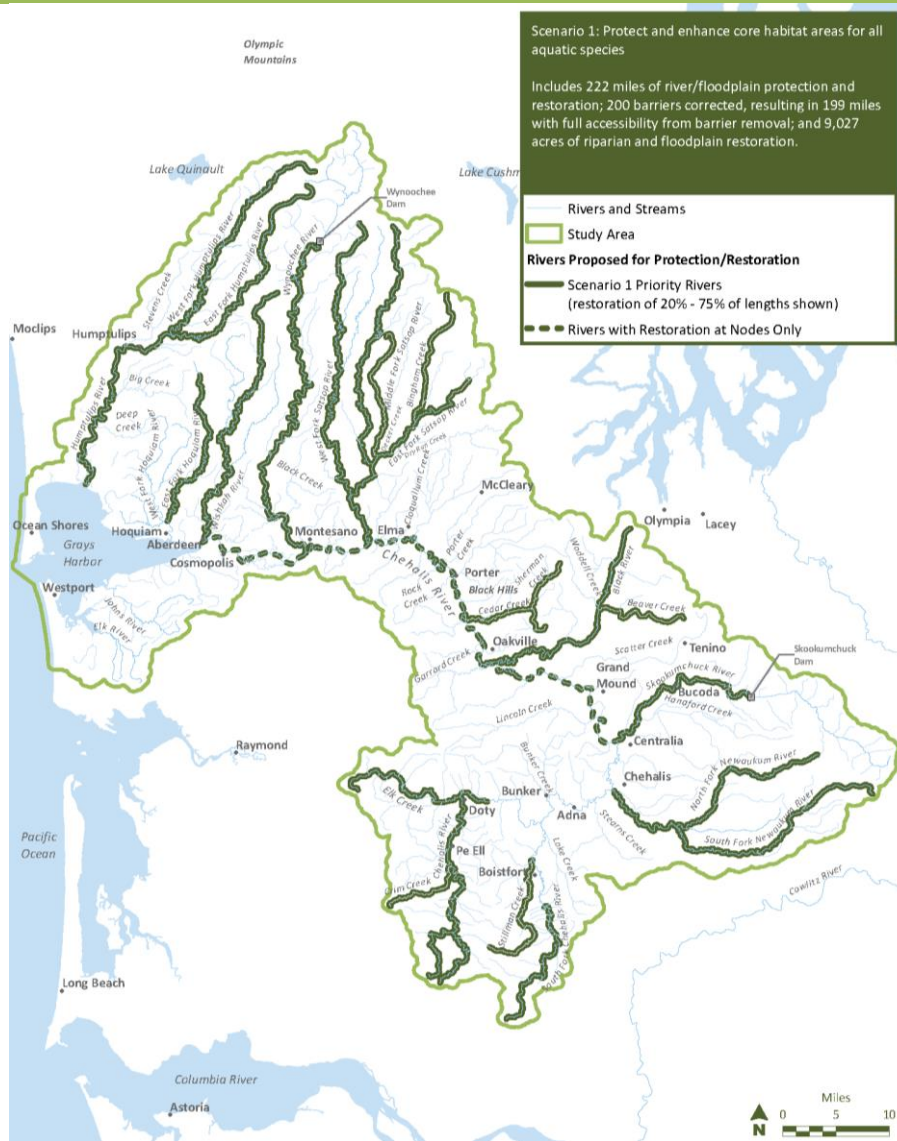
# Phase 1 ASRP Includes:

- Summaries of historical and existing conditions across the 10 ecological regions
- Identification of 3 restoration and protection scenarios
- Summary of the potential results for aquatic species and associated costs of enacting any of the scenarios
- Recommended actions across each ecological region for all 5 Strategies



Photo courtesy of Lonnie Crumley, Chehalis Basin Fisheries Task Force

# Scenario 1



Goal: Protect and enhance core habitat areas

River Restoration = 222 miles

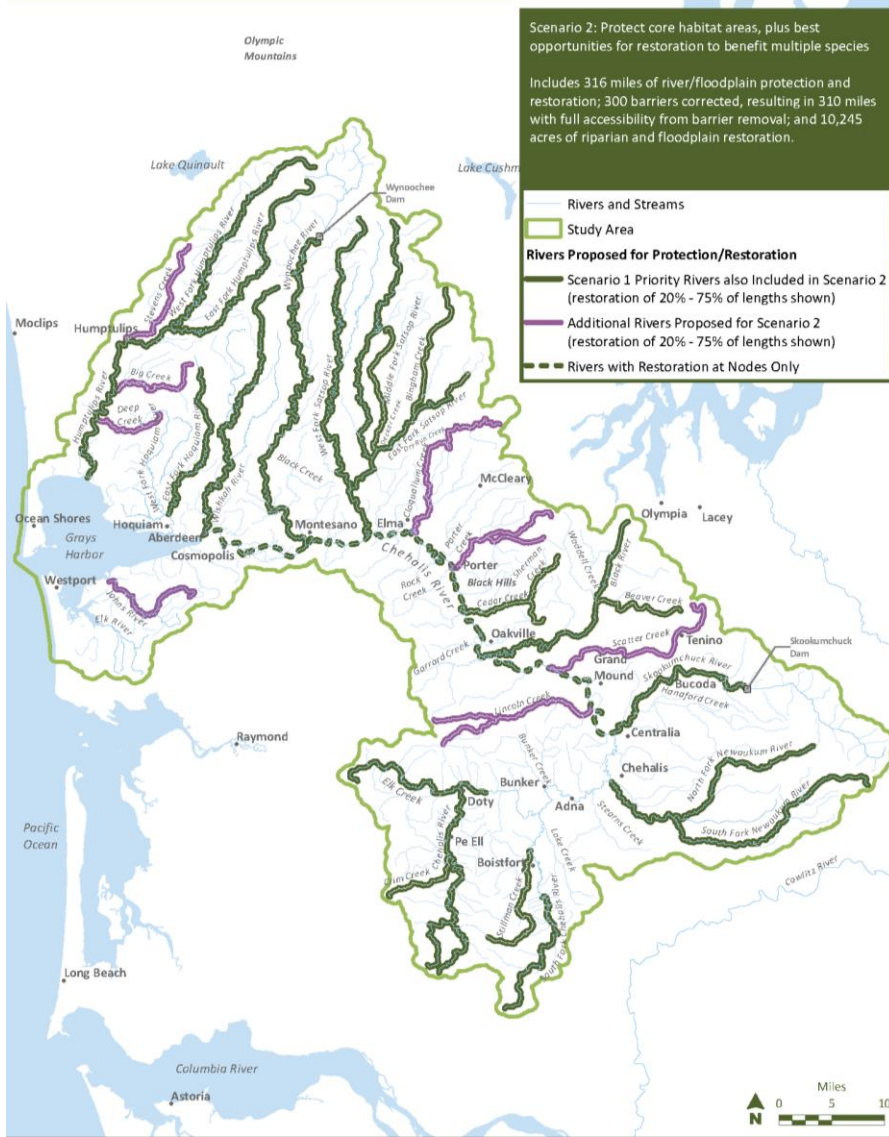
Riparian/Floodplain Restoration = 9,027 acres

Barriers = 200

Active restoration and protection of 20%-75% of lengths shown depending on landowner partnerships and onsite opportunities



# Scenario 2



Goal: Protect and enhance core habitats and expand to best restoration opportunities to benefit multiple species

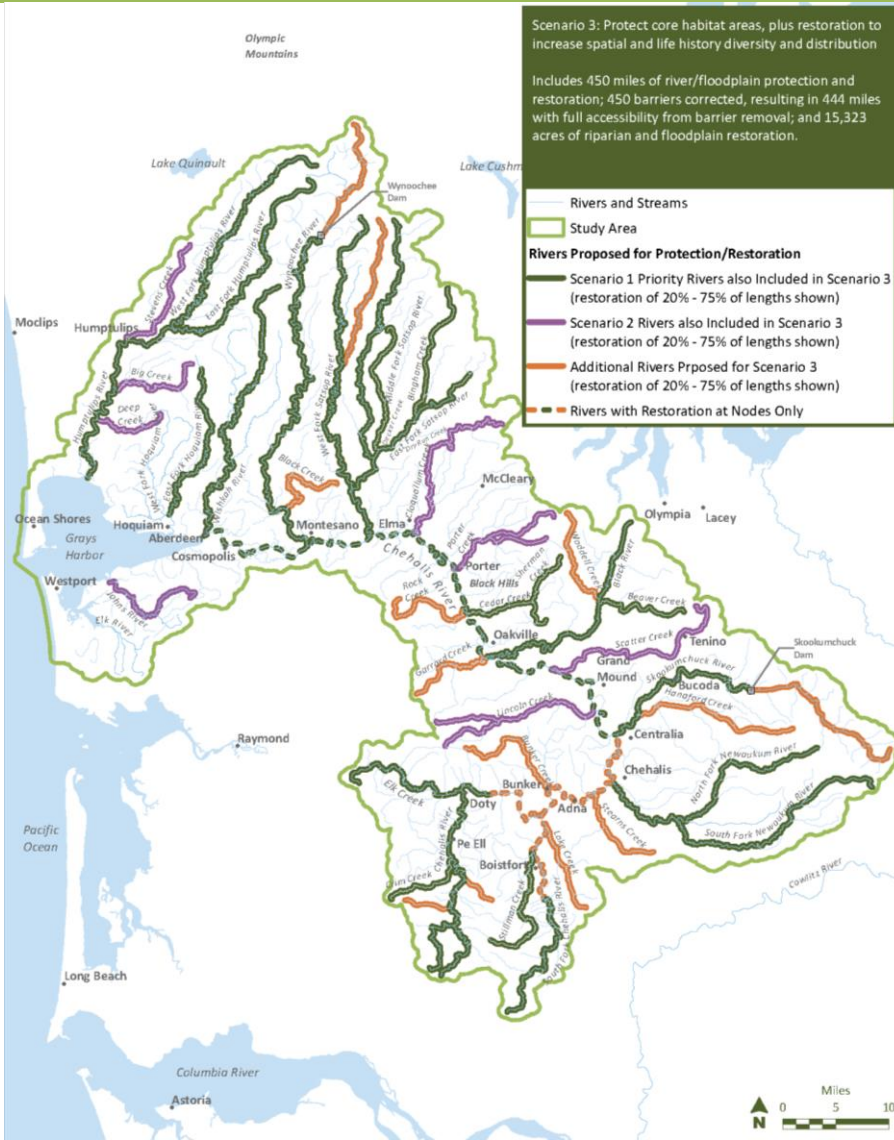
River Restoration = 316 miles

Riparian/Floodplain Restoration = 10,245 acres

Barriers = 300

Active restoration and protection of 20%-75% of lengths shown depending on landowner partnerships and onsite opportunities

# Scenario 3



Goal: Protect and enhance core habitats and increase spatial and life history diversity

River Restoration = 450 miles

Riparian/Floodplain Restoration = 15,323 acres

Barriers = 450

Active restoration and protection of 20%-75% of lengths shown depending on landowner partnerships and onsite opportunities

# Early Implementation

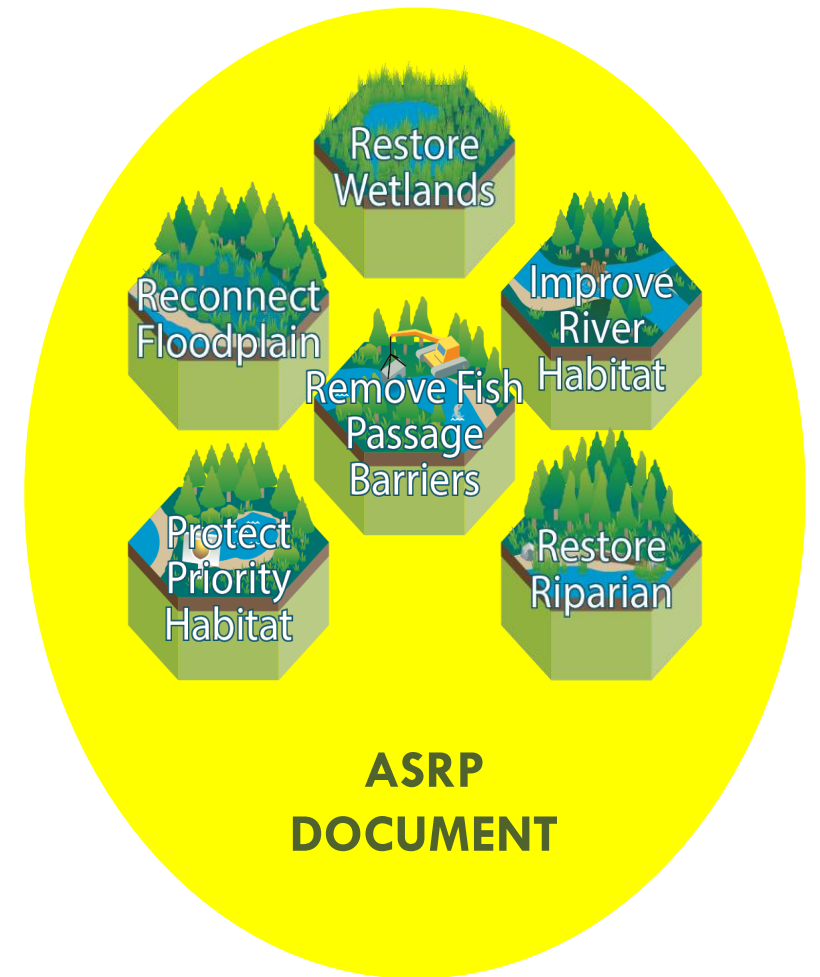
- 1<sup>st</sup> five reach scale projects underway with willing landowners across basin
  - Lessons learned informing future projects
- Open solicitation for restoration and protection project proposals
  - Includes institutional capacity funds
  - Due February 5<sup>th</sup>, 2020



Wynoochee aerial drone footage, WDFW

# ASRP Development Timeline

- Phase 1: published November 15<sup>th</sup>
  - Full document out for public review through Jan 14, 2020
  - Outlines approach, strategies and implementation framework
- Phase 2: Summer 2020
  - Refinement of strategies and implementation planning
- Phase 3: Winter 2020
  - “Final” ASRP document as part of Chehalis Basin Strategy



# Questions



For more information contact: Emelie McKain, WDFW ASRP Manager  
[Emelie.McKain@dfw.wa.gov](mailto:Emelie.McKain@dfw.wa.gov)