



# City of Cosmopolis

Mill Creek Dam Replacement Project

Chehalis Basin Flood Authority Presentation

October 19, 2017





# November 2008

- Previous Dam was breached during a severe storm.
- This left the City of Cosmopolis without any Flood Control along Mill Creek.

Before Breach



After Breach



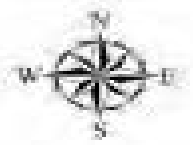


**First Storm After Breach**



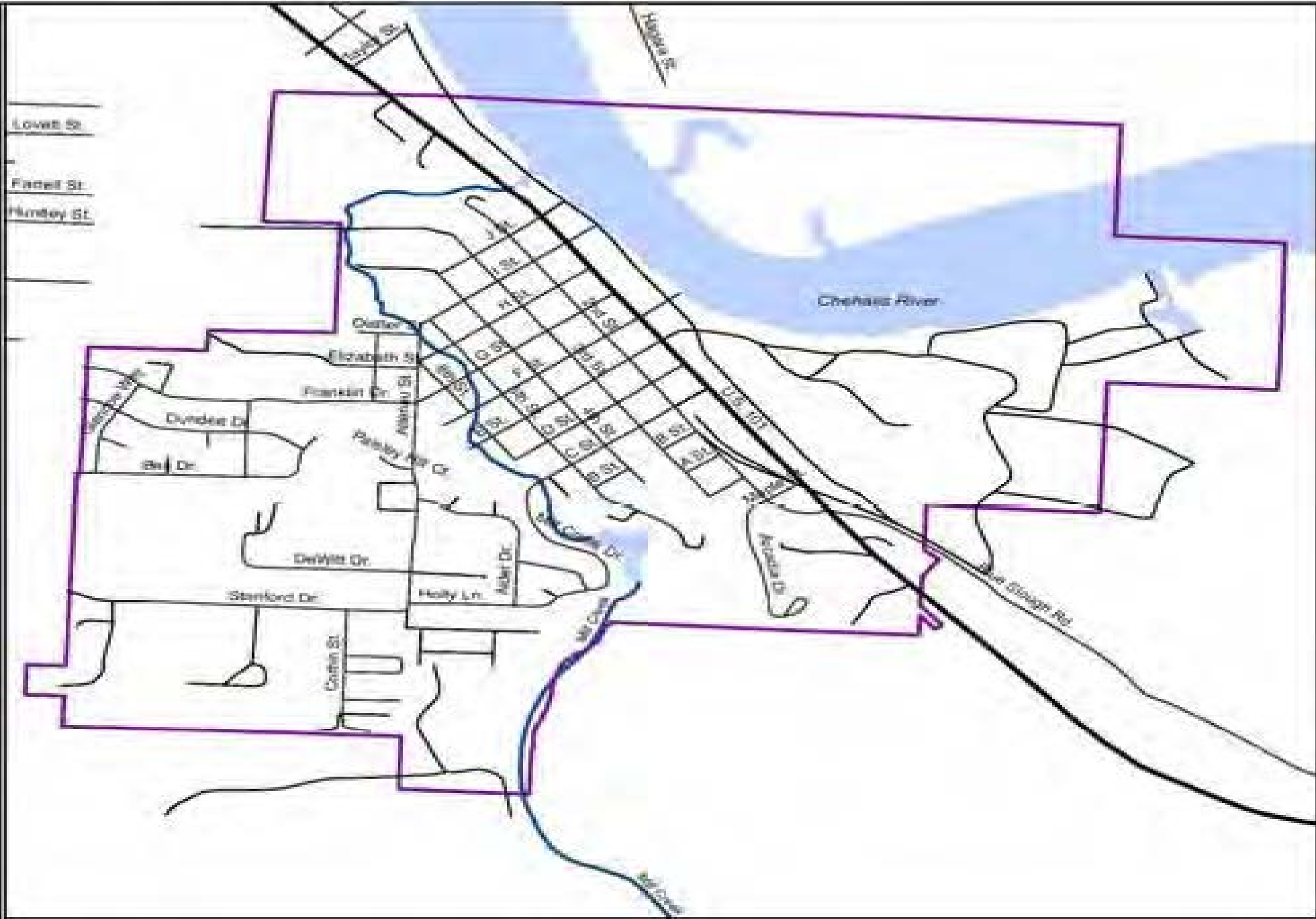
## Photos of Flooding During the Storm

# CITY OF COSMOPOLIS

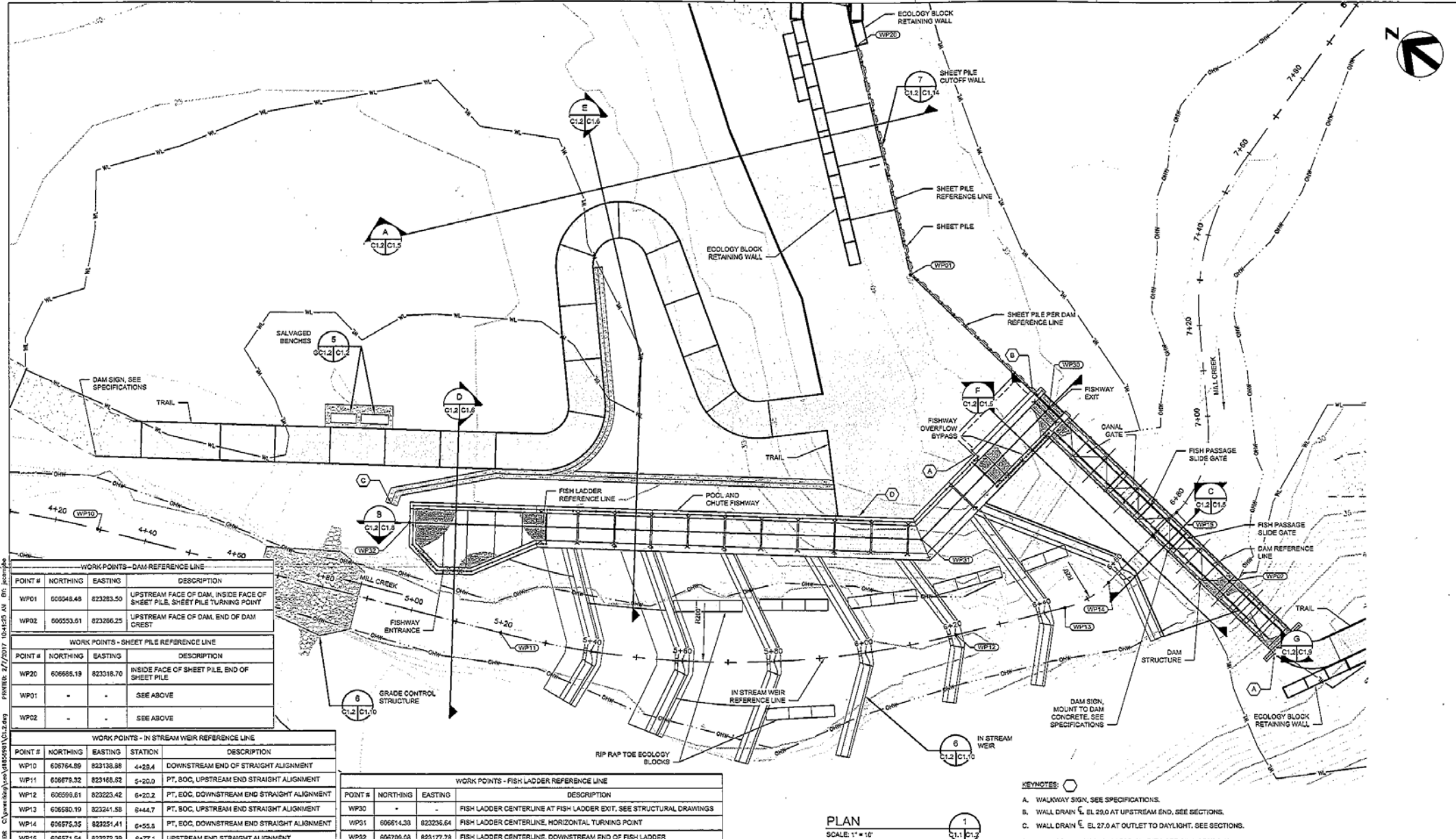


## Legend

-  City Limits
-  Water
-  River
-  Highway
-  Streets



This map is for planning purposes only. The Hood Canal Council of Governments does not warrant or accept any liability for the accuracy or quality of the information or geographic features.



WORK POINTS - DAM REFERENCE LINE			
POINT #	NORTHING	EASTING	DESCRIPTION
WP01	600548.48	823283.50	UPSTREAM FACE OF DAM, INSIDE FACE OF SHEET PILE TURNING POINT
WP02	600553.61	823266.25	UPSTREAM FACE OF DAM, END OF DAM CREST

WORK POINTS - SHEET PILE REFERENCE LINE			
POINT #	NORTHING	EASTING	DESCRIPTION
WP0	606686.19	823318.70	INSIDE FACE OF SHEET PILE, END OF SHEET PILE
WP01	-	-	SEE ABOVE
WP02	-	-	SEE ABOVE

WORK POINTS - IN STREAM WEIR REFERENCE LINE				
POINT #	NORTHING	EASTING	STATION	DESCRIPTION
WP10	606764.89	823138.88	4+28.4	DOWNSTREAM END OF STRAIGHT ALIGNMENT
WP11	606779.32	823168.82	6+20.0	PT. BOC, UPSTREAM END STRAIGHT ALIGNMENT
WP12	606599.61	823223.42	6+20.2	PT. EOC, DOWNSTREAM END STRAIGHT ALIGNMENT
WP13	606680.19	823241.58	6+44.7	PT. BOC, UPSTREAM END STRAIGHT ALIGNMENT
WP14	606753.35	823251.41	6+55.5	PT. EOC, DOWNSTREAM END STRAIGHT ALIGNMENT
WP15	606571.54	823272.39	6+77.1	UPSTREAM END STRAIGHT ALIGNMENT

WORK POINTS - FISH LADDER REFERENCE LINE			
POINT #	NORTHING	EASTING	DESCRIPTION
WP30	-	-	FISH LADDER CENTERLINE AT FISH LADDER EXIT, SEE STRUCTURAL DRAWINGS
WP31	606614.39	823236.64	FISH LADDER CENTERLINE, HORIZONTAL TURNING POINT
WP32	606706.08	823177.78	FISH LADDER CENTERLINE, DOWNSTREAM END OF FISH LADDER

- KEYNOTES:**
- A. WALKWAY SIGN, SEE SPECIFICATIONS.
  - B. WALL DRAIN  $\bar{C}$  EL 29.0 AT UPSTREAM END, SEE SECTIONS.
  - C. WALL DRAIN  $\bar{E}$  EL 27.0 AT OUTLET TO DAYLIGHT, SEE SECTIONS.
  - D. WALL DRAIN NOT SHOWN FOR CLARITY, SEE CIVIL SECTIONS.

**PLAN**  
SCALE: 1" = 10'



PROJECT MANAGER:	T. NIJME
DESIGNED BY:	M. PROBY
CHECKED BY:	E. ZAPPELMAN, GARELLO
DRAWN BY:	J. CAMPBELL
ISSUE DATE:	1-27-2017
DESCRIPTION:	ISSUED FOR BID
PROJECT NUMBER:	10017898



**CIVIL**  
**DAM AND FISH PASSAGE PLAN**

FILENAME: C12.dwg  
SCALE: AS NOTED

C1.2

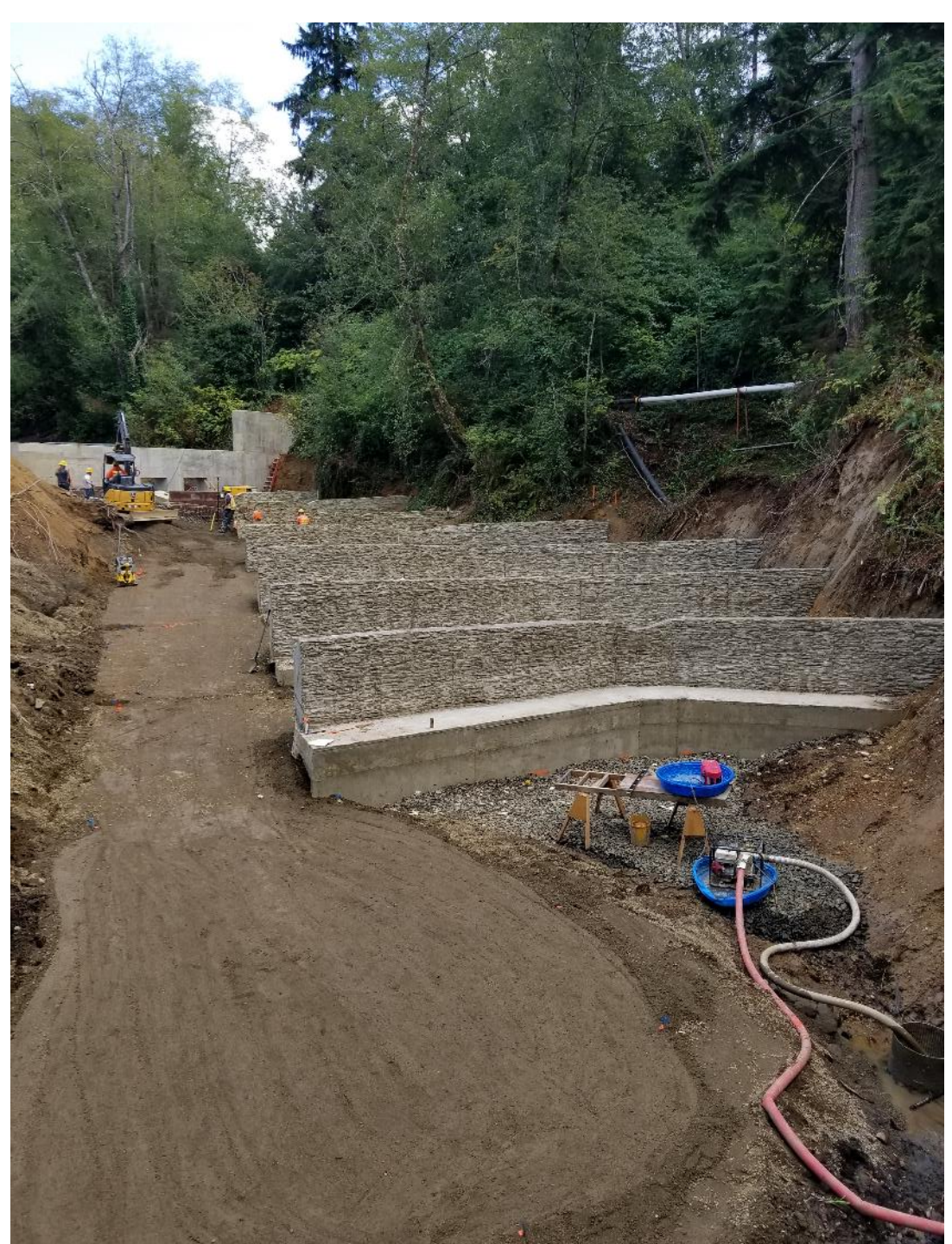
# New Dam and Fish Weirs





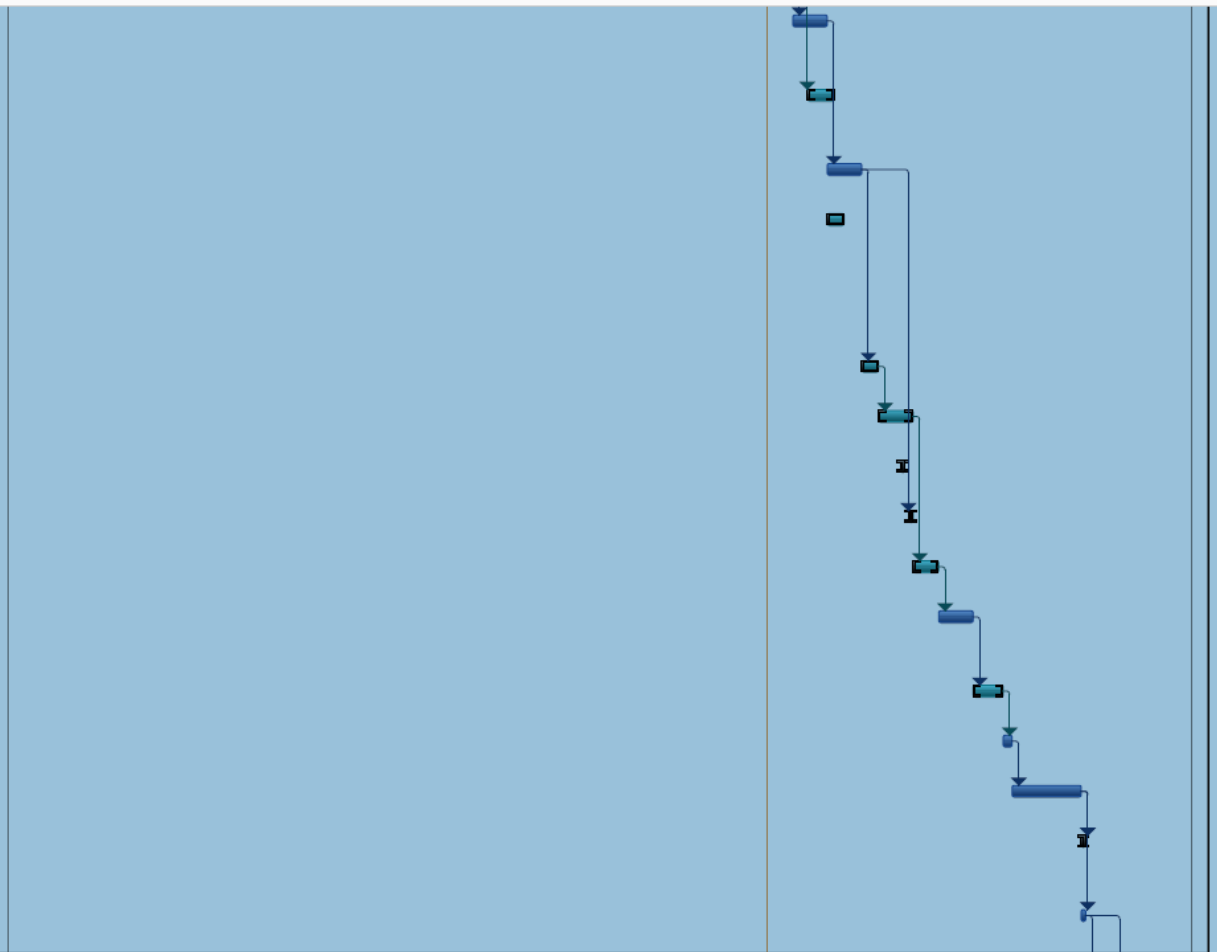
The first four Fish Weirs ↗

Dam, Fish Weirs, and Fish Ladder Subgrade →





35	\$150,000.00	P7: Form and Pour Fish Ladder Walls to every other expansion Joint	5 days	Mon 10/9/17	Mon 10/16/17
36	\$40,000.00	Plant Low grow and wet Native (All Except turn around area)	3 days	Thu 10/12/17	Tue 10/17/17
37	\$60,000.00	P8: Form and Pour Remaining Fish Lader	5 days	Mon 10/16/17	Mon 10/23/17
38	\$0.00	Install Gates (except for the gear boxes) 3 days afterward a deminstation of opening the gate to ensure that the gates do not stick	4 days	Mon 10/16/17	Thu 10/19/17
39	\$0.00	Curing for fish Ladder	4 days	Mon 10/23/17	Thu 10/26/17
40	\$0.00	Backfilling Fish ladder	5 days	Thu 10/26/17	Thu 11/2/17
41	\$0.00	Fish Window Closes	1 day	Tue 10/31/17	Tue 10/31/17
42	\$70,000.00	Release Stream Bypass	1 day	Wed 11/1/17	Thu 11/2/17
43	\$0.00	P9 - Pour approach slab to Fish Ladder	3 days	Thu 11/2/17	Tue 11/7/17
44	\$143,000.00	Erect steel, grates, gear boxes for gates and hand-rail	5 days	Tue 11/7/17	Tue 11/14/17
45	\$0.00	Remove turn-around area	4 days	Tue 11/14/17	Mon 11/20/17
46	\$80,000.00	Drive Remaining Sheetpile	2 days	Mon 11/20/17	Wed 11/22/17
47	\$35,000.00	Set Echoblock (Walls)	10 days	Wed 11/22/17	Wed 12/6/17
48	\$0.00	Training Day for Slide Gate Install and 2nd demonstration	1 day	Wed 12/6/17	Thu 12/7/17
49	\$0.00	Substantial Completion	1 day	Wed 12/6/17	Thu 12/7/17



Find your tools here

- Create PDF
- Edit PDF
- Export PDF
- Comment
- Organize Pages
- Enhance Scans
- Protect
- Fill & Sign
- Prepare Form
- Send for Signature
- Send & Track
- Compare Files

Project: 171004 R6 - Mill Creek - S Date: Wed 10/4/17	Task		Project Summary		Inactive Milestone		Manual Summary Rollup		Deadline
	Split		External Tasks		Inactive Summary		Manual Summary		Progress
	Milestone		External Milestone		Manual Task		Start-only		Finish-only
	Summary		Inactive Task		Duration-only		Finish-only		Finish-only