



Document Path: G:\Projects\Washington\Anchor\CEA_300\02\Chetahis_Basin_218397\Map_Docs\Small_Projects\Small_Projects.mxd



1 inch = 400 feet

0 250 500 1,000 Feet

Kirkland Road Flood Study - City of Napavine



Document Path: G:\Projects\Washington\Anchor\CEA_300\02\Chehalis_Basin_218397\Map_Docs\Small_Projects\Small_Projects.mxd

1 inch = 500 feet

SR 6 Overflow - WSDOT/Lewis County

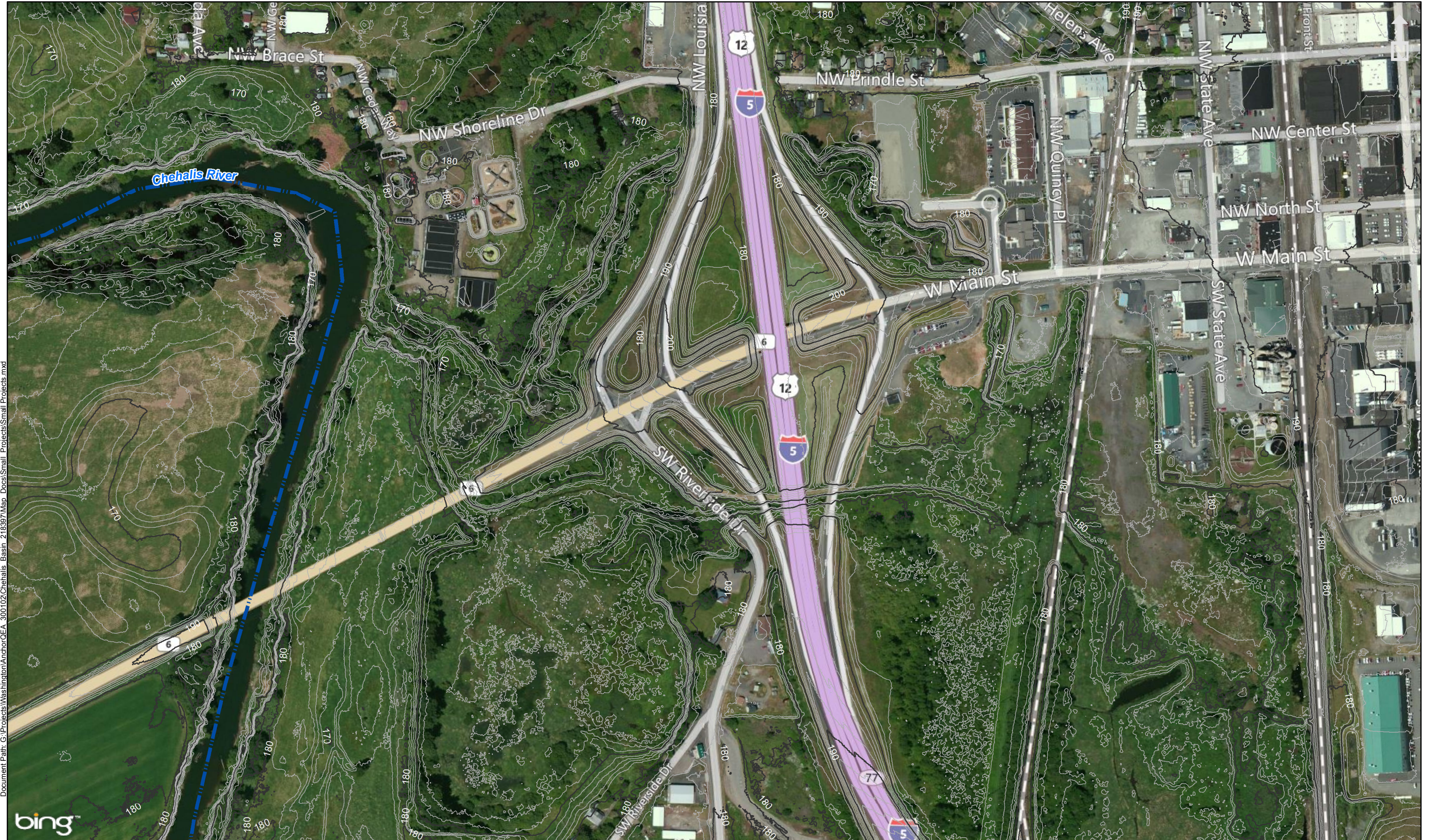


Document Path: G:\Projects\Washington\Anchor\CEA_300\02_Chehalis_Basin_210397\Map_Docs\Small_Projects\Small_Projects.mxd



1 inch = 1,000 feet 0 625 1,250 2,500 Feet

Dillenbaugh Creek Realignment - City of Chehalis



Document Path: G:\Projects\Washington\Anchor\CEA_300\02\Chehalis_Basin_218397\Map_Docs\Small_Projects\Small_Projects.mxd



1 inch = 300 feet

0 190 380 760 Feet

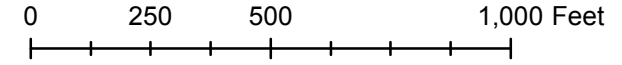
Main Street Regrade - City of Chehalis



Document Path: G:\Projects\Washington\Anchor\CEA_300\02\Chehalis_Basin_218397\Map_Docs\Small_Projects\Small_Projects.mxd



1 inch = 400 feet



Salzer Creek - Lewis County



Document Path: G:\Projects\Washington\Anchor\CEA_300\02\Chet\Basis_Basin_218397\Map_Docs\Small_Projects\Small_Projects.mxd



1 inch = 300 feet
0 190 380 760 Feet

Main Street Regrade - Town of Bucoda



Document Path: G:\Projects\Washington\Anchor\CEA - 300-02\Chehalis - Basin - 218397\Map - Docs\Small Projects\Small Projects.mxd

1 inch = 800 feet

0 500 1,000 2,000 Feet

Moon Road - Chehalis Tribe



Document Path: G:\Projects\Washington\Anchor\CEA_300\02_Chehalis_Basin_218397\Map_Docs\Small_Projects\Small_Projects.mxd



1 inch = 400 feet

0 250 500 1,000 Feet

Black River Bridge - Chehalis Tribe



Document Path: G:\Projects\Washington\Anchor\CEA_300\02_Chehalis_Basin_218397\Map_Docs\Small_Projects\Small_Projects.mxd



1 inch = 800 feet
0 500 1,000 2,000 Feet

Roundtree Creek - Chehalis Tribe



Document Path: G:\Projects\Washington\Anchor\CEA_300\02\Chet\chals Basin_218397\Map_Docs\Small Projects\Small Projects.mxd



1 inch = 800 feet

0 500 1,000 2,000 Feet

Wynoochee Valley Road Regrade - Grays Harbor County