



May 16, 2018

TO: Flood Authority Members

FROM: Scott Boettcher, Staff

SUBJECT: Reallocation of Unspent Lower Satsop Relic Channel Funds (\$100,000)

The purpose of this memo is to discuss and present a recommendation on reallocating \$100,000 in unspent Lower Satsop relic channel funds. We will discuss this at Thursday's Flood Authority meeting. Feel free to contact me with questions (360/480-6600, scottb@sbgh-partners.com).

I. Background

1. In June 2016, the Flood Authority approved funding for WDFW to reopen a Lower Satsop relic channel as a means to reduce erosion for local landowners. See https://www.ezview.wa.gov/Portals/_1492/images/Lower%20Satsop%20Relic%20Channel%2006152016.pdf.
2. Implementation of the relic channel has proven difficult to accomplish due to property access and environmental/regulatory permitting issues. It is expected to continue to be difficult largely due to the mitigation and permitting requirements associated with impacting the high-value forested wetlands in the immediate area.
3. Because of this, as well the fact that the river has now migrated toward the relic channel potentially yielding the reopening effort unnecessary as the river may do it itself, there has been interest among local stakeholders in considering options for reallocating unspent relic channel funds (\$100,000) to other more timely and beneficial efforts in the Lower Satsop.

II. Proposal to Reallocate \$100,000 in Unspent Relic Channel Funds in Favor of Other Beneficial Lower Satsop Activities/Efforts

The following proposal has been developed based on input gathered from the ad hoc Lower Satsop group, as well as several follow-up conversations with Grays Harbor County and Grays Harbor Conservation District, and been reviewed and endorsed by the Flood Authority's Projects Committee as a recommendation for approval to the full Flood Authority:

1. **Lower Satsop Planning, Visioning, Priority Setting Project (\$40,000)** – Funds would be used to immediately implement the planning process/project described in Attachment A (Lower Satsop Planning, Visioning, and Priority-Setting Project).

2. **Keys Road (\$22,500)** – Funds would be used for a preliminary/draft engineering analysis to determine what protection measures (and at what cost and on what time scale) are needed to ensure Keys Road remains open and functional. It is currently substantially threatened. See Attachment A, Figure 7 showing less than 140 feet between the river and Keys Road. Analysis is to be concluded by October 2018 in order to be considered for possible inclusion in the 2019-21 State Capital Budget request.
3. **Grays Harbor Conservation District (\$22,500)** – Funds would be used for the Conservation District to work with landowners to effectively engage in the Lower Satsop Planning, Visioning, Priority-Setting Project. Landowners are diffuse and distributed (yet also essential to the Project) thus an extra effort is needed to ensure their participation, contribution and cultivation of their ideas.
4. **Relic Channel Re-Opening as a tool (\$15,000)** – Funds would be used to evaluate what the regulatory issues are with relic channel reopening and produce a report with recommendations on how to do relic channel reopening in a more expedient manner. There are other relic channels in the Basin (e.g., Montesano) that could be considered as beneficial locations for reopening. Understanding from a regulatory standpoint how to do relic channel reopening would be helpful. Relic channel reopening continues to remain a potentially useful flood hazard reduction tool.

III. Recommendation

Staff recommends the Flood Authority approve reallocation of unspent Lower Satsop relic channel funds as proposed and direct staff to work with RCO and Grays Harbor County to implement all elements of the proposal as presented.


Attachment A

Lower Satsop Planning, Visioning, and Priority-Setting Project



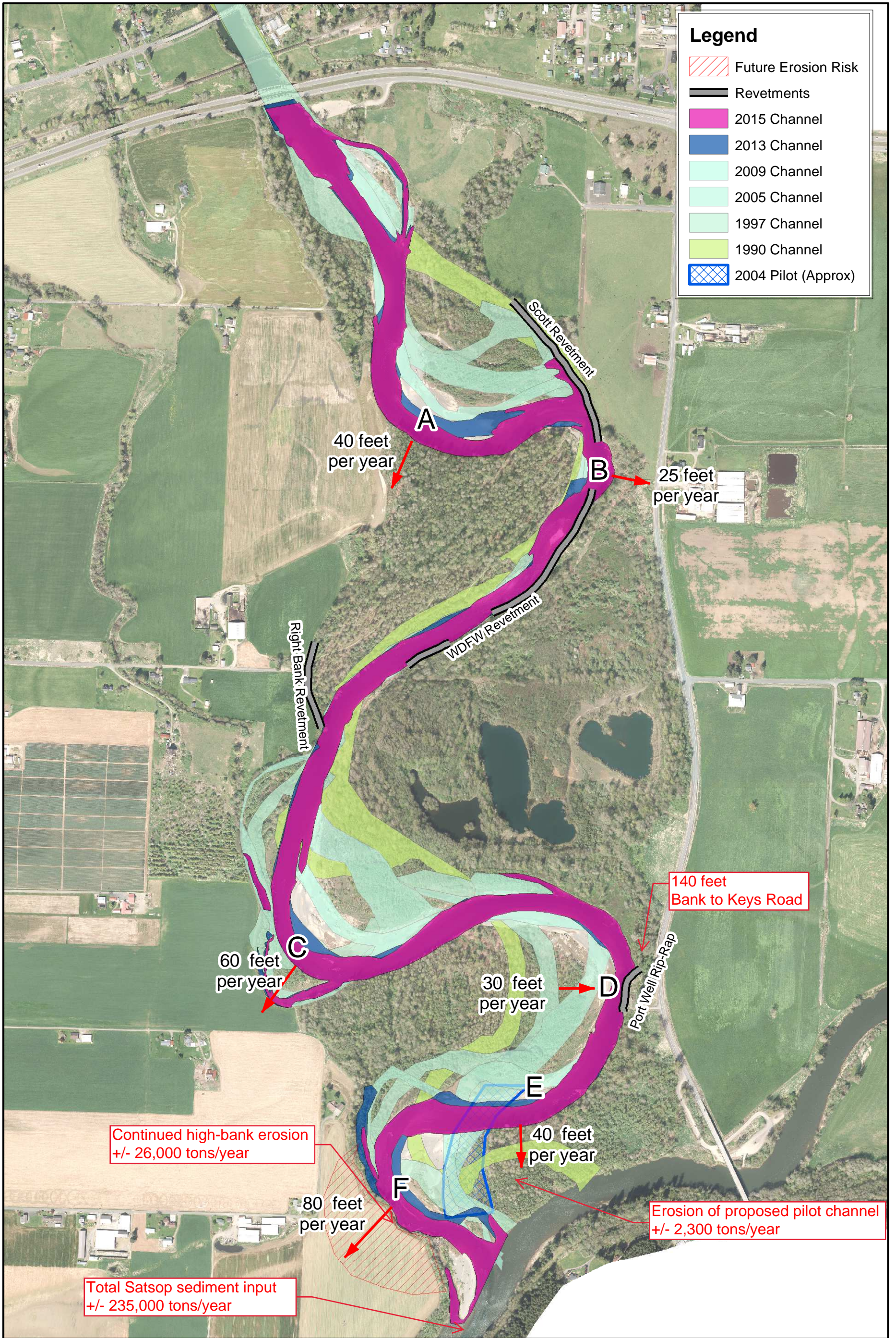
Scope of Work
Grays Harbor County (GHC) - Lower Satsop Planning, Visioning, and Priority-Setting Project
5-15-2018

Background:	<p>Reducing flood impacts in the Lower Satsop is complicated (Hwy 12 to Chehalis R.). Lower Satsop is an active, dynamic, and unpredictable flood environment where the river wants to frequently move, shift, and change course [it is not a stable and predictable environment]. See attached Figure 7.</p> <p>Lower Satsop has many parties and interests, each with compelling and legitimate needs, including:</p> <ul style="list-style-type: none"> • Port of Grays Harbor -- Ensure protection and continuity of Port water supply and County transportation assets. • WDFW -- Protect and restore fish and wildlife habitat. • GHC -- Protect and ensure safety of Keys Road. • GHCD -- Represent and help landowners. • Governmental Agencies -- Ensure conformity with applicable laws and regulations, and that projects are appropriately mitigated for their impacts (as applicable). <p>GHC, WDFW, and others have independently pursued flood hazard reduction in the Lower Satsop in past several years. This has proved challenging (and sometimes contentious) due to lack of continuing awareness for how one's project might adversely impact another's interests, lack of momentum, and multiple interests.</p> <p>GHC (supported by Chehalis River Basin Flood Authority) has recently stepped-in to serve as central coordinator and convener of Lower Satsop projects. Goal is to ensure communication across Lower Satsop projects is clear, consistent, and constant. Goal is not for GHC to do all projects, rather to ensure they are coordinated and not conflicting with one another.</p>
Need:	<p>In this role, GHC desires to initiate a visioning/planning/priority-setting process (spring/summer/fall 2018) to surface issues, identify near-term and longer-term actions, and put a visible plan of action into place (projects, sequence, timelines, funding, etc.). Goal is flood hazard reduction that works toward the interests of Lower Satsop parties (and not against those interests).</p>
Partners:	<p>Current partners engaged in developing a set of near-term and longer-term solutions to flood hazard reduction in the Lower Satsop include:</p> <ul style="list-style-type: none"> • Grays Harbor County Conservation District. • Port of Grays Harbor. • WA State Department of Ecology. • WA State Department of Fish and Wildlife. • WA State Department of Natural Resources.

	<ul style="list-style-type: none"> • Various private landowners affected by substantial flooding and erosion issues. • Chehalis River basin Flood Authority. <p>As the planning/visioning/priority-setting process advances, this list of partners is expected to grow (e.g., WA State Department of Transportation).</p>
Planning Area:	<p style="text-align: center;">Lower Satsop River (Monte Elma Road to Chehalis River)</p>  <p>The map shows the Lower Satsop River area, bounded by Monte Elma Road to the north and the Chehalis River to the south. Key roads include Middle Satsop Rd, E Satsop Rd, Monte Elma Rd, Brady (Route 12), Satsop, and Keys Rd. The river is shown in blue, and the surrounding land is in light gray. A yellow line highlights the area from Monte Elma Road to the Chehalis River.</p>
Task 1:	Assess and tally key issues, parties, and priority outcomes.
Task 2:	Develop range of potential and priority actions (and associated implementation costs/timelines).
Task 3:	Engage interested and affected parties.
Task 4:	Memorialize plan of action as a reader-friendly, readily-consumable, resource for today and tomorrow.
Task 5:	Activate and use the following EZview website as a tool to engage and keep interested and affected parties informed, up-to-date, and able to access key documents and informational materials: <ul style="list-style-type: none"> • Grays Harbor County (GHC) - Lower Satsop Planning, Visioning, and Priority-Setting Project (https://www.ezview.wa.gov/site/alias_1973/overview/37259/overview.aspx)
Timeline:	<ul style="list-style-type: none"> • May/June 2018 – Project kick-off, Background research, Key party interviews. • June/July 2018 – Public engagement, Public meeting, Draft format/structure. • July/August 2018– Development, Status update briefings. • August/September 2018 – DRAFT Vision/Priority Actions document, Public engagement, Public meeting.

	<ul style="list-style-type: none"> September/October 2018– Development, Status update briefings. October/November 2018– FINAL Vision/Priority Actions document, Commission approval. 	
Cost:	<ul style="list-style-type: none"> \$40K (anticipated) 	
Contact:	<p>Rob Wilson, County Engineer Grays Harbor Public Works 100 W. Broadway, Suite 31, Montesano, WA, 98563, 360-249-4222 rwilson@co.grays-harbor.wa.us</p>	<p>Scott Boettcher, Staff Chehalis River Basin Flood Authority 360-480-6600 scottb@sbgh-partners.com</p>

DRAFT



Grays Harbor County, WA

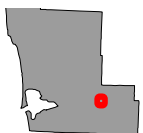


Figure 7
Recent Erosion Areas



Scale: 1:8,000
NAD83 Washington
South ft

28 Jun 2017

