

CHAIRMAN:
Mark R. Stedman, County Commissioner
Lincoln County
P.O. Box 28
Davenport, WA 99122
(509) 725-3031

LEAD AGENCY:
Lincoln County
Department of Public Works
27234 SR25 N
Davenport, WA 99122
(509) 725-7041

QUADCO RTPO
Quad County
Regional Transportation Planning Organization

**SFY 2017
Surface Transportation Block Grant (STBG) Set-Aside Program
APPLICATION**

Applications are due: October 7th, 2016 – 4:00 p.m.

To be at LEAD AGENCY (not postmarked). Applications can be submitted by single signed hard copy by mail, OR signed copy (signature in colored ink) scanned in PDF format and submitted by email to:

pnollmeyer@co.lincoln.wa.us

Applications must be signed by appropriate agency representatives
(NO faxed copies shall be accepted)

Basic Information:

Project Title Pioneer Meadows Pedestrian Trail

Location Moses Lake, WA

Lead Agency City of Moses Lake

Contact Person Shawn O'Brien, City Engineer
(Name) (Title)

Phone: 509-764-3786

Email: sobrien@cityofml.com

Address PO BOX 1579, Moses Lake, WA 98837

Does sponsoring agency have "Certification Acceptance: status from WSDOT?"

Yes No

If No, state which agency will serve as your CA sponsor and please fill-out CA confirmation form.

CA Sponsor: WSDOT – North Central Region

**SFY 2017
Surface Transportation Block Grant (STBG) Set-Aside Program
APPLICATION**

Cost Estimate and Funding Sources:

<i>Funding Source</i>	<i>Amount</i>
STBG Set-Aside (Funds Requested)	\$288,865
Match (13.5% required)	\$ 45,085
Other	\$147,667 (1.13 acres of land being dedicated)
In-Kind	\$ 0
TOTAL	\$481,617

Type of STBG Set-Aside Project:

- Construction, planning, and design of on-road and off-road trail facilities for pedestrians, bicyclists, and other non-motorized forms of transportation.
- Construction, planning, and design of infrastructure-related projects and systems that will provide safe routes for non-drivers.
- Conversion and use of abandoned railroad corridors for trails.
- Construction of turnouts, overlooks, and viewing areas.
- Inventory, control, or removal of outdoor advertising.
- Historic preservation and rehabilitation of historic transportation facilities.
- Vegetation management practices in transportation right-of-way.
- Archaeological activities relating to impacts for implementation of transportation projects eligible under this title.
- Environmental mitigation activity related to highway construction due to highway runoff.
- Eligible project under the Recreational Trails Program, Safe Routes to School Program, and within the right-of-way of former interstate routes.

SFY 2017
Surface Transportation Block Grant (STBG) Set-Aside Program
APPLICATION

Total Project Description:

Explain the nature of the **entire project**. Indicate the major work involved, a brief comparison of existing and proposed conditions, and type of use etc. Identify if this is part of a larger project. Include drawings as required to explain the project. **AND Attach a detailed 8 1/2" x 11" vicinity map) – See Attachments #1 and #2**

The City of Moses Lake will use this grant to construct the Pioneer Meadows Pedestrian Trail. This 2,100-foot trail will be located adjacent to the Three Ponds Resource Area which includes the Japanese Peace Gardens and a small park. The Three Ponds Resource Area is a 13.78 acre special use park that is owned and operated by the City of Moses Lake.

The Pioneer Meadows Pedestrian Trail will serve as a connector trail (aka shortcut) in that it will link pedestrians from Pioneer Way to Division Street and vice versa in a more direct fashion.

Currently, pedestrians have to zig zag through various streets to access everyday needs: pharmacy, grocery shopping, hospital, etc. This trail connector creates a more direct and scenic route.

By constructing this trail, the City of Moses Lake will continue to show its support for providing our community with alternative means of transportation. Each section of trail adds to our entire trail system. At present, we have 62.98 miles of multi-use paths, 4' or greater shoulders, bike lanes, and lanes marked with sharrows.

The Pioneer Meadows Trail will be a 5-foot wide, pervious concrete trail that will run along property that is owned by the City of Moses Lake and property that it is in the process of being obtained from the Pioneer Meadows Apartment site through the platting process. The City owned property is currently part of a wetland bank and the City is working with the Banking Oversight Committee to determine the allowable width and location of the trail. See Attachment #3.

The trail will include a 5% ramp with retaining walls off of Pioneer Way and a short pedestrian bridge over a narrow finger of wetlands that is along the proposed route.

1. Alternative Travel Modes (10 points):

Describe how the project encourages the use of alternative travel modes. Identify what types of alternative travel modes will be encouraged. Include estimates of how much this will be used by primary and alternative modes of transportation.

Currently pedestrians have two routes that can be taken to walk from Division Street to Pioneer Way. These routes are either much longer or have a large and steep vertical climb. The Pioneer Meadows Pedestrian Trail is very accessibility with flat grades (boardwalk/gradual slope up Pioneer Way) and in the direct route of several apartment complexes already in existence and currently under construction as well neighborhoods to the south of the site.

Pedestrians will be our primary targeted user group along the trail.

Both Pioneer Way and Division Street are main gateways into the downtown area. Weekly pedestrian counts from 2015 on Division Street range from 335 to 429. The City doesn't have any pedestrian counts for Pioneer Way, but they are believed to be comparable to Division.

SFY 2017
Surface Transportation Block Grant (STBG) Set-Aside Program
APPLICATION

2. Economic Revitalization and Tourism (20 points):

Describe how this project promotes economic revitalization. Provide estimates of the specific economic revitalization this enhancement will provide, including your justification or rationalization of the estimates. Explain how this project enhances tourism in your community, what kind of impact does it have on tourism and how does it benefit the community.

The trail's economic impact to the City of Moses Lake will be significant once constructed. It will give users a scenic view around nearly the whole perimeter of the Three Ponds Resource Area. This area has been described as Moses Lake's own mini Central Park - it is basically land locked with development all around it.

The project will provide users access to restrooms, Japanese Peace Gardens, paved parking, open park space, Torri Gate, Koi pond, and most importantly, unobstructed wildlife observation all of which enhance recreational opportunities in the Three Ponds Resource Area for residents and tourists alike.

Industries will look favorably at our parks and recreation opportunities and how progressive the city is for providing alternative travel modes when selecting a site to locate their businesses.

The trail is also less than a half a mile from our main tourist facility – Surf 'n Slide Water Park where we see annual attendance of more than 100,000 visitors with 80% of those users traveling here from outside of our 98837 zip code.

3. Public Benefit and Regional Importance (15 points):

Describe how the population of the geographic area expects to use, benefit, or be served by the project. Explain how the project will improve the public travel experience and provide travel options. Describe the regional importance of the project and whether it enhances connections to regional, statewide systems, or scenic highway.

People of all ages and abilities in the geographic area will benefit from a flat and easily traversed trail that easily connects them to local facilities and amenities. They will also have access to wildlife like no other opportunity in the city limits. Citizens have cut through this property for decades, as apparent from the foot paths that can be seen from historical aerial views. The apartment complex that is currently being constructed will forever block those traditionally used routes. This proposed trail will provide an official alternative that will be maintained by the City of Moses Lake.

Nearly 20,000 residents are located within a 2-mile radius of the proposed trail location. See Attachment # 4

The Pioneer Meadows Pedestrian Trail does not connect to regional or statewide systems but does enhance our local network and provides Moses Lake with another tourist destination.

The City of Moses Lake is along the Coulee Corridor National Scenic Byway.

SFY 2017
Surface Transportation Block Grant (STBG) Set-Aside Program
APPLICATION

4. Safety (10 points):

Describe how the project improves public safety for transportation system users. For example, does the project address a specific safety issue, or does it address pedestrian or bike safety? How will it either reduce crashes or reduce the potential for future crashes?

The Pioneer Meadows Pedestrian Trail will be a recreational path that will improve safety by giving users a more direct route of travel that is separated from vehicle traffic. This will result in reduced conflict points between pedestrians and motor vehicles.

5. Connectivity (10 points):

Describe how this project enhances connections or existing facilities. (i.e. trail/path connections). Please provide a drawing and description of existing facilities, and how this enhancement completes the connection.

The Pioneer Meadows Pedestrian Trail will add a valuable connection to the backside of the Three Ponds Resource Area/Japanese Peace Gardens. This connection will allow trail users to view wildlife in a controlled environment like never before within the city limits.

The trail will connect to the multi-use trail on Pioneer Way and from the multi-use trail or bike lanes on Division Street.

Facilities like the hospital, medical clinic, grocery stores, retail, and banks will all be made more accessible for people living in the Division Street area. Surf 'n Slide Water Park, the Post Office, Ahlers Park, Laketown Landing, Farmers Market and Neppel Landing will have a more direct connection to people living in the Lakeview neighborhood.

See Attachment #5

SFY 2017
Surface Transportation Block Grant (STBG) Set-Aside Program
APPLICATION

6. Environmental Enhancement (10 points):

Describe the project's ability to preserve and enhance significant natural and cultural resources.

The City of Moses Lake is committed to preserve and protect significant environmental features for park and open space use, including unique wetlands, open spaces, woodlands, shorelines and waterfronts, which reflects Moses Lake's natural heritage. It's not uncommon to see mule deer, quail, pheasants, flickers, owls and a variety of other wildlife in and around the Three Ponds Resource Area.

MRK Corporation donated the land and also contributed \$50,000 to the City of Moses Lake for development of the park. Of the nearly 14 acres, it consists primarily of 11 acres of wetland. The Three Ponds Resource Area includes the Japanese Peace Garden and a small park. Facilities at the site include: restrooms, paved parking, wildlife observation platform, open space, WDOT wetland mitigation bank, trees, open park space, Koi pond, waterfall, Torrii gate, and other Japanese themed features. These facilities were constructed in 2008.

The Pioneer Meadows Trail would run adjacent to the Three Ponds Resource Area as well as a spur that would connect directly to the area from the main trail. The sole purpose of the Three Ponds Resource Area is to preserve and protect the area from impact. The trail will provide users with a designated route which allows them to get close to nature with minimal disturbance.

7. Regional Transportation Plan Support (5 points):

Describe how this project meets regional transportation plans, policies and goals. Specifically list where this project has been previously approved in regional or local plan, policies, or goals for this project type. Demonstrate the need of the project by providing previous conceptual project plan dates, previous funding requests, and/or planning programs that include the project.

The Pioneer Meadows Pedestrian Trail is identified in the current Transportation Element of the Land Use Comprehensive Plan as well as the newly updated 2016 Comprehensive Parks, Recreation & Open Space Plan.

- Develop a high quality system of park trails and corridors that access significant environmental features, public facilities and developed local neighborhoods and business districts.
- Link residential neighborhoods to community facilities.
- Increase natural area and open space linkages within the developed area, particularly along a shared-use path built within the right-of-way.
- Locate trailheads at, or in conjunction with, park sites, schools, and other community facilities and furnish trail system with appropriate trailheads which include support amenities such as signage, drinking fountains, restrooms, benches and parking.
- Identify and acquire significant natural areas to meet outdoor recreation and habitat protection needs, as well as wildlife habitat connectivity.

SFY 2017
Surface Transportation Block Grant (STBG) Set-Aside Program
APPLICATION

8. Project Readiness (10 points):

Does your project require property rights outside of your ownership on other agency or private land owner property? X Yes No :If so, please describe. Note: Coordinate early in the scoping process. Attach letters of concurrence from affected agencies (i.e. WSDOT Local Programs, County, State, Federal, etc.) or private property owner(s). AND Are there any circumstances that could delay this project and/or are there any critical times associated with this application? (e.g., right of way acquisition, environmental documentation, other funds needed to match other applications, etc.) Does this application request sufficient funds that result in a complete and usable facility?

The City of Moses Lake has been working with the developer of the Pioneer Meadows Apartments and the Mitigation Banking Oversight Committee (BOC) to acquire land for this project. The City of Moses Lake's platting process requires the developer to provide 1.475 acres of land or \$192,752 for park facilities. The City and developer have reached an agreement that will provide the City with 1.13 acres and \$45,085 for the trail's construction. This will be completed prior to the plat being recorded and should be completed in the near future.

Attached is a letter from the BOC, Attachment #3, which provides the City with permission to use a strip of land for the Pioneer Meadows Pedestrian Trail. This land is owned by the City of Moses Lake, but is located within the edge of the buffer around a WSDOT wetland bank area. The approval has some requirements for construction, but nothing that should delay the ability to construct the trail.

9. Local or Regional Support (10 points):

Demonstrate local or regional support of the project. (letters of support, previous public involvement and input, partnerships with private or public agencies)

Moses Lake's Trails Planning Team, Parks and Recreation Commission, Planning Commission, and City Council have all supported this project. The Pioneer Meadows Pedestrian Trail is identified in the current Transportation Element of the Land Use Comprehensive Plan as well as the newly updated 2016 Comprehensive Parks, Recreation & Open Space Plan.

WSDOT (Gretchen Lux) has identified themselves as an interested party.

We have also partnered with Mitigation Banking Oversight Committee (BOC) to construct a small portion of the trail within the Bank buffer which they oversee.

**SFY 2017
Surface Transportation Block Grant (STBG) Set-Aside Program
APPLICATION**

Approval/Concurrence of Submitting /Lead Agency

This project has the approval/concurrence of the submitting agency and is consistent with the agency comprehensive plan. Certification is hereby given that the information provided is accurate and all information is complete and included as part of the application.

AGENCY City of Moses Lake

DATE: 10-05-16

BY: Dany A Havel
(Mayor / Chairman/Responsible Party)

Approval of Receiving Agency that will operate and maintain

This project has the concurrence of the agency and this agency will provide ongoing maintenance and operations for the anticipated design life of the proposed project. Certification is hereby given that the information provided is accurate and all information is complete and included as part of the application.

AGENCY City of Moses Lake

DATE: 10-05-16

BY: Dany A Havel
(Mayor / Chairman)

**SFY 2017
Surface Transportation Block Grant (STBG) Set-Aside Program
APPLICATION**

SURFACE TRANSPORTATION BLOCK GRANT (STBG) SET-ASIDE PROGRAM

Certification Acceptance (CA) Confirmation:

Certification Acceptance (CA) is a program in which the Federal Highway Administration (FHWA) delegates authority to the Washington State Department of Transportation (WSDOT) for approving project development and construction administration on federal-aid projects. WSDOT has the option of further delegating this authority to qualified agencies. All federal-aid projects must be administered by a CA agency. Non-CA entities can apply for Surface Transportation Block Grant (STBG) Set-Aside funding, but they must have a CA agency sponsor the project. This sponsorship must be in place prior to applying for funds. All 39 counties in Washington State have CA status, as well as approximately 60 cities, and the six WSDOT region Local Programs offices.

Non-CA entities must have this sheet signed by the CA agency that will administer the proposed project. This signed confirmation must be included with all project proposals submitted by non-CA entities.

Non-CA Entity: City of Moses Lake

Project Title: Pioneer Meadows Activity Trail

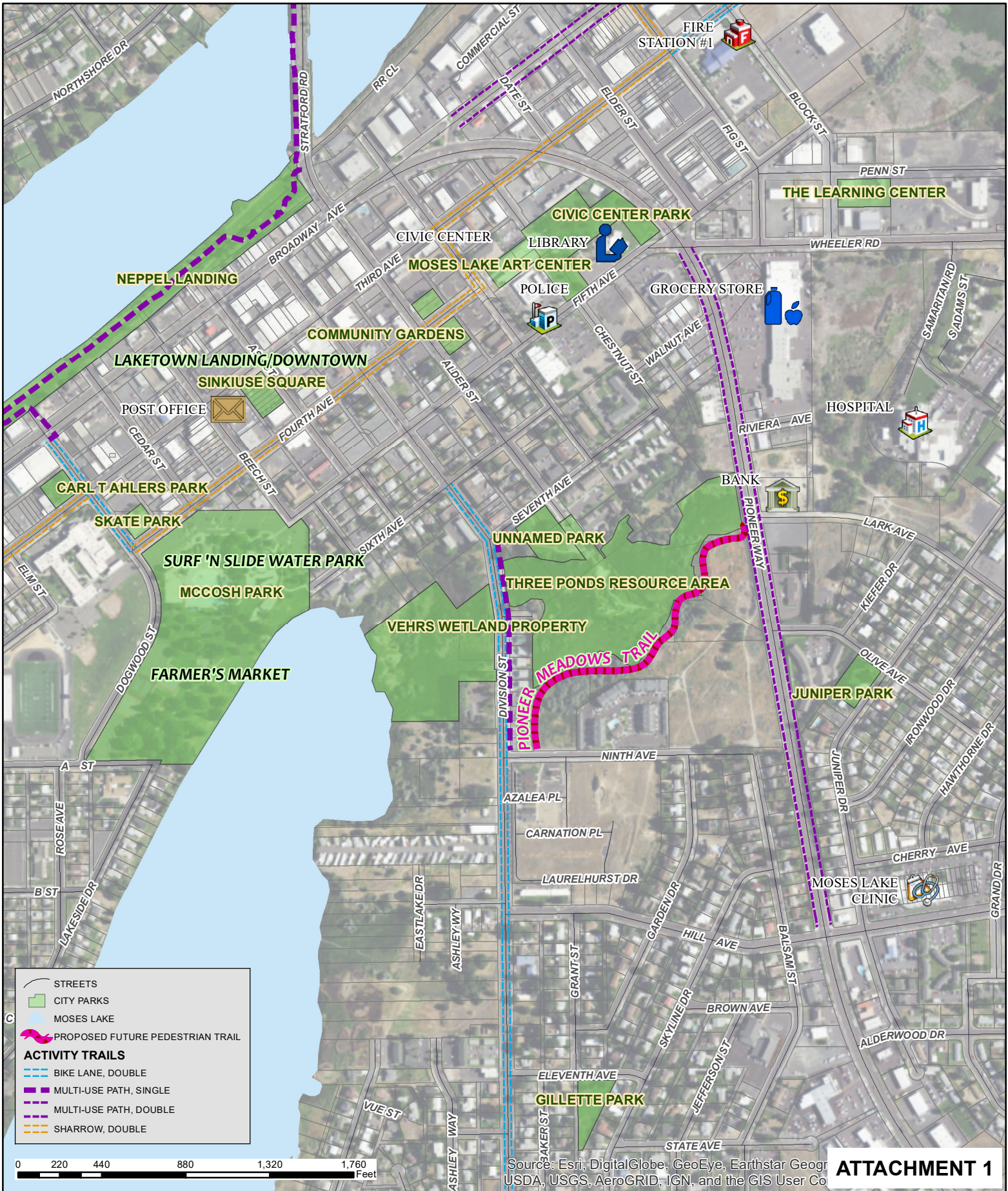
CA Agency: WSDOT – North Central Region

CA Representative

Signature: 

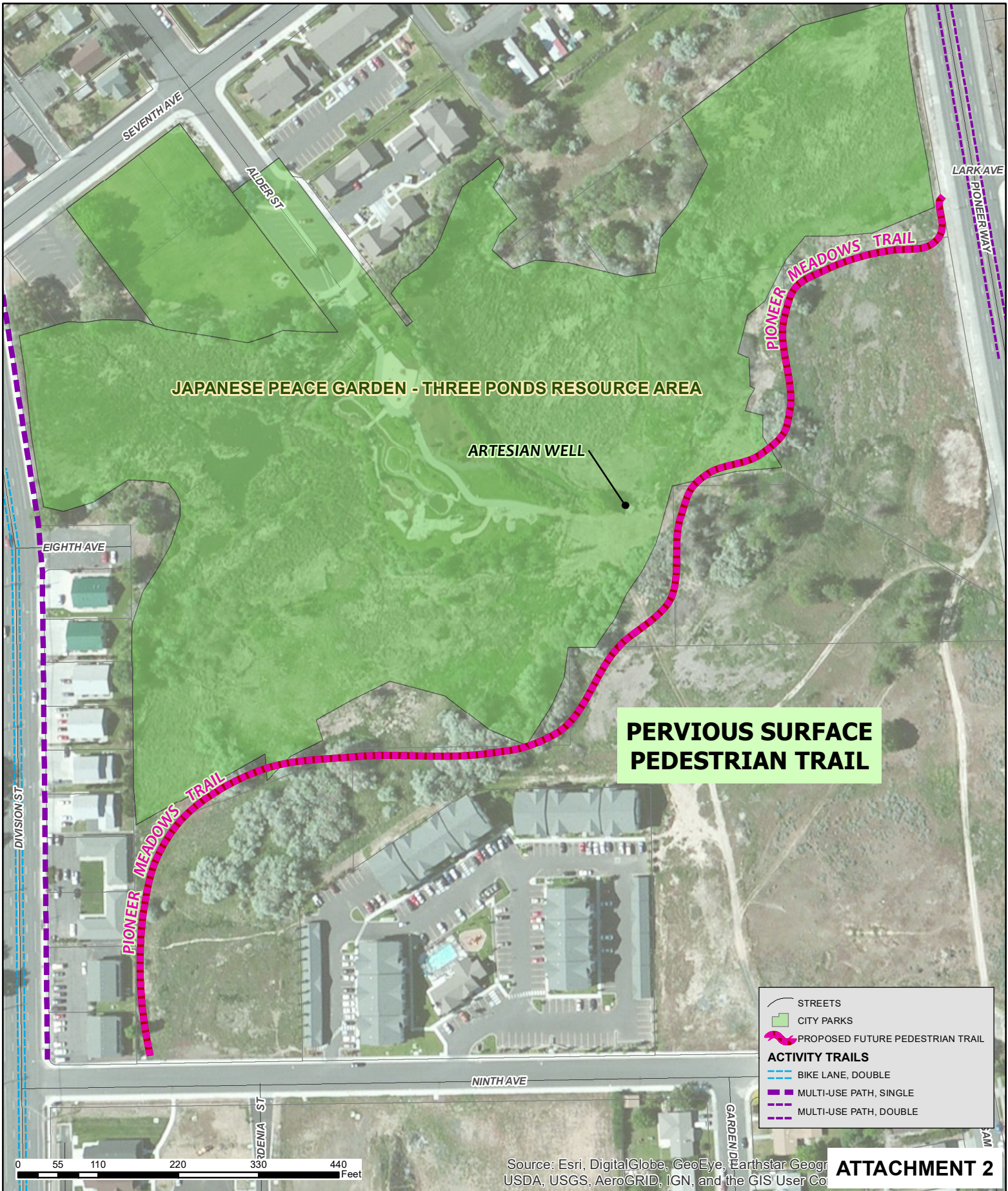
Printed Name: Paul Mahre

Title: NCR Local Programs Engineer



PROPOSED PIONEER MEADOWS TRAIL CONNECTIVITY





PROPOSED PIONEER MEADOWS TRAIL





US Army Corps
of Engineers
Seattle District

US ARMY CORPS OF ENGINEERS
DEPARTMENT OF ECOLOGY
JOINT AGENCY LETTER



June 23, 2016

City of Moses Lake
Anne Henning
PO BOX 1579
Moses Lake, WA 98837

RE: Pioneer Meadows Trail

Dear Ms. Henning:

Thank you for meeting with the Mitigation Banking Oversight Committee (BOC) on April 20, 2016, to discuss your proposal to construct the City of Moses Lake, Pioneer Meadows Trail within the edge of the buffer at the Washington State Department of Transportation (WSDOT) Moses Lake Mitigation Bank (Bank). WSDOT has agreed to allow a small portion of the Bank buffer for construction of the City's trail. The BOC agencies have reviewed the draft plan provided at the April meeting, showing the 10-14 foot wide, pervious surface, multi-use trail. The trail will be constructed along the outside edge of the Bank buffer, and a small portion of the trail, 1,072 square feet, will be located within the buffer of the Bank. At these locations, the trail width will be reduced to 5 feet to minimize bank buffer impacts.

The trail will have a fence along the Bank buffer edge to discourage pedestrian access into the Bank. In addition, at the outlet where the existing trail within the Bank will connect with the proposed trail, the BOC has agreed to allow public access from the Pioneer Meadows Trail to the Japanese Gardens, via the existing Bank trail. In order to allow this public access point, the City has agreed to install a split-rail fence, or similar type of fence, along the existing Bank trail and to install signs to keep the public from intruding into other areas of the Bank site. In addition, it is our understanding that the gate will be locked each evening by City staff. If the BOC determines that the Bank is being negatively impacted by the public access, then the BOC may direct the City to permanently lock the gate to prevent public access onto the Bank site.

The BOC hereby approves the draft proposal for the trail dated April 20, 2016. Please provide a final trail map that includes the correct bank boundary with the 100 feet buffer clearly marked on the map, to the BOC prior to construction of the trail. It is our understanding that WSDOT is responsible for providing a revised map of the Bank site to both the City and the BOC. If the location or size varies from the April 2016 proposal, the BOC will need to review and provide a decision on the modified proposal. In addition, the following is required:

1. Prior to trail construction contact the BOC members below via e-mail with a schedule for trail construction, and a final plan showing bank impact locations, trail width, and square footage of the impact area.
2. Within 60 days of final trail construction, the City shall submit the final as-built drawing of the trail in addition to photos to document the fence, signs and gate were installed at the site.

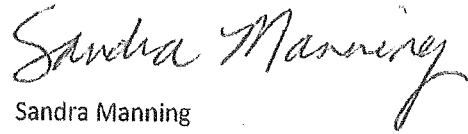
Attachment #3

If you have any questions about this response, please contact Kate Thompson at 360-407-6749 or by email, kate.thompson@ecy.wa.gov or Sandra Manning at 206-764-6911 or by email, Sandra.L.Manning@usace.army.mil.

Sincerely,



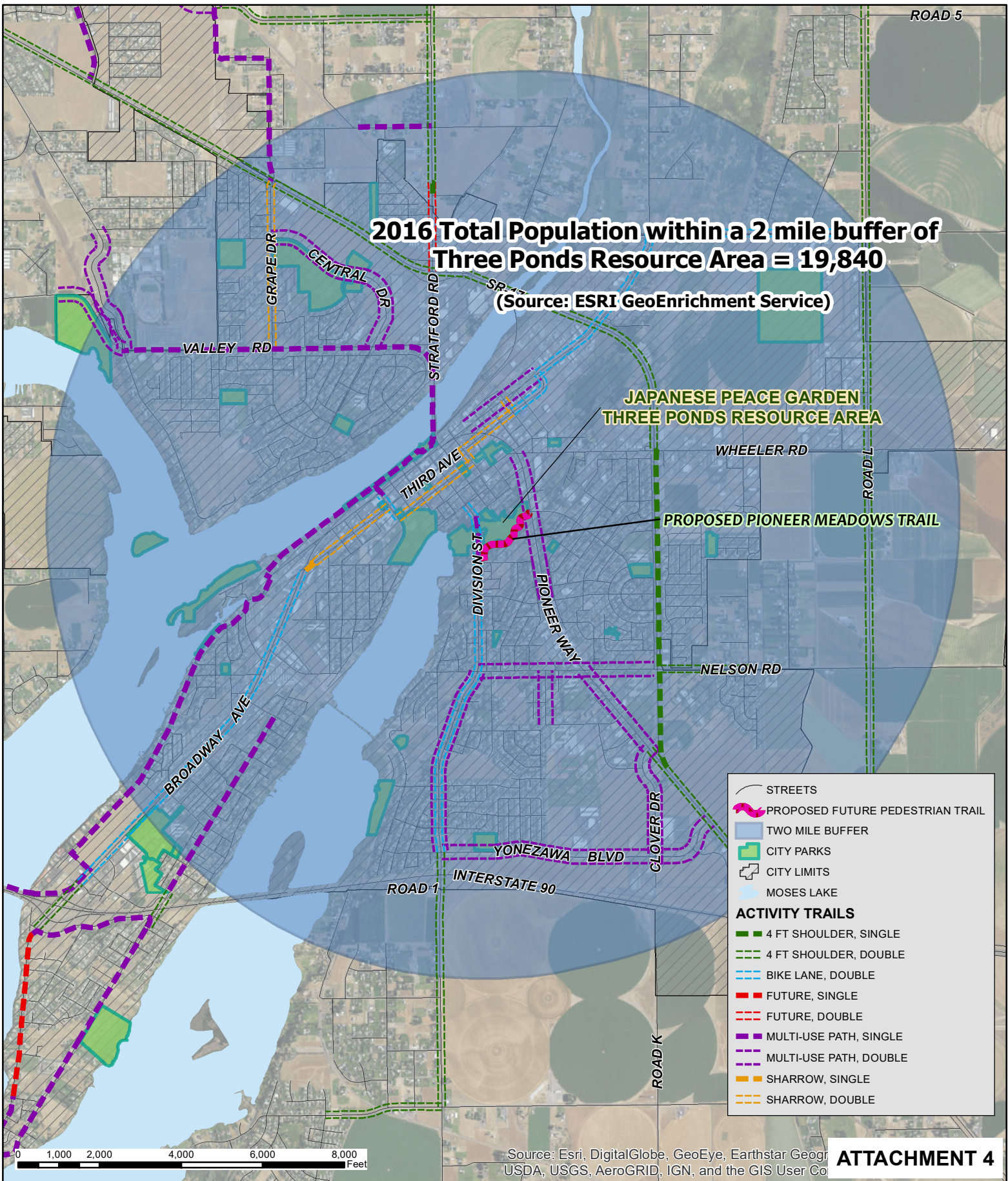
Kate Thompson
BOC Member
Washington State Department of Ecology
Shorelands and Environmental Assistance Program



Sandra Manning
BOC Member
Seattle District
U.S Army Corps of Engineers

e-cc: Linda Storm - EPA

Gretchen Lux, Claton Belmont-WSDOT



ATTACHMENT 4



PROPOSED PIONEER MEADOWS TRAIL



Trail Etiquette

All Users

Show courtesy to other trail users at all times.
 Use the right side of the trail except when otherwise designated.
 Always pass on the left.
 Keep dogs on a leash (maximum length 8 feet) and remove pet waste from trail.

Bicyclists

Yield to pedestrians.
 Give audible warning when passing pedestrians or other bicyclists.
 Ride at a safe speed.
 Slow down and form a single file in congested conditions, reduced visibility and other hazardous conditions.

Pedestrians

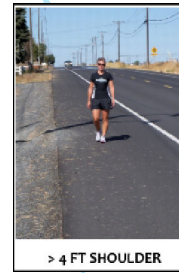
Stay to the right side of the trail except when otherwise designated.
 Watch for other trail users.
 Listen for audible signals and allow faster trail users (runners and bicyclists) to pass safely.



SHARROWS



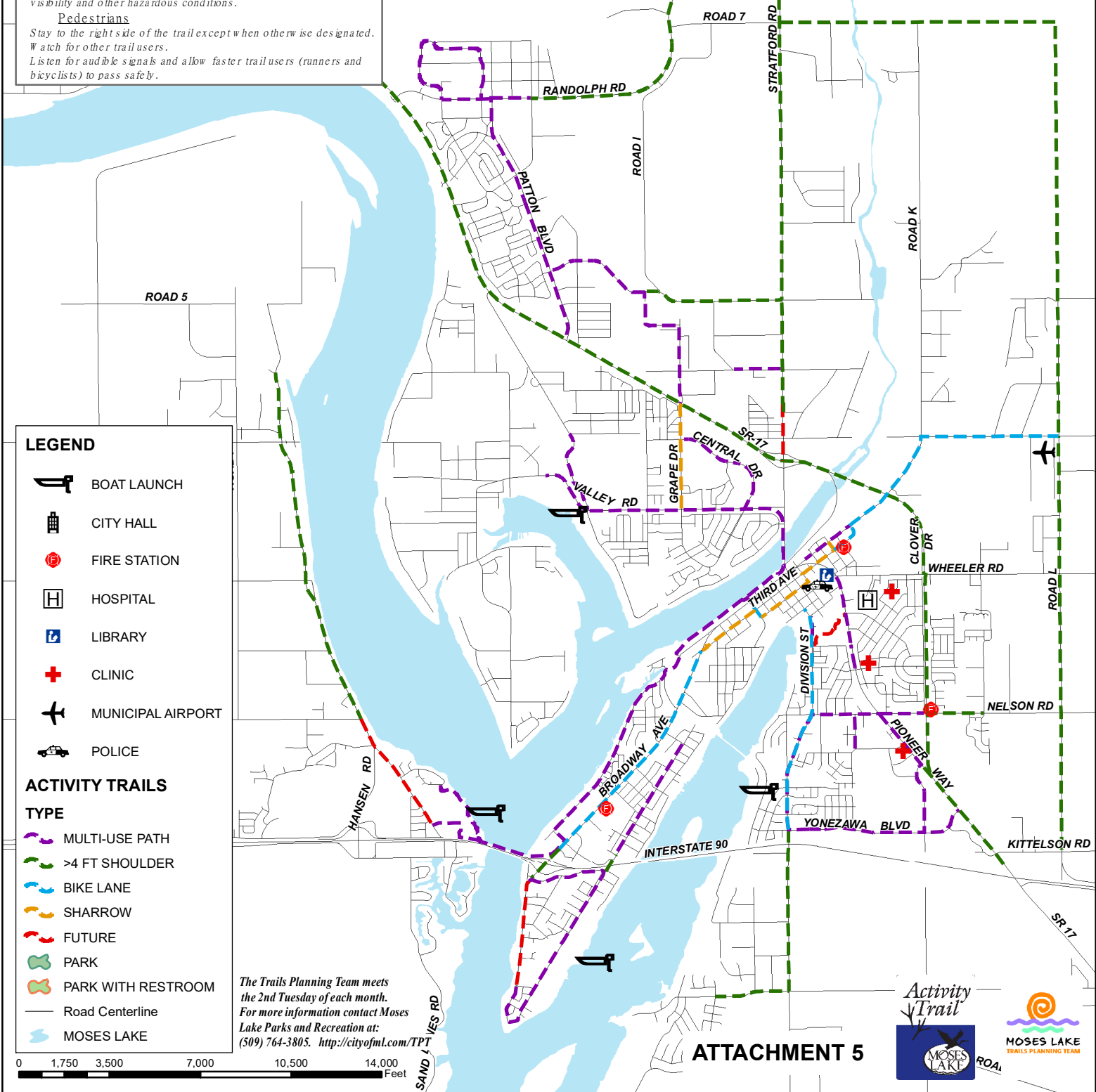
BIKE LANE



> 4 FT SHOULDER



MULTI USE PATH



LEGEND

- BOAT LAUNCH
- CITY HALL
- FIRE STATION
- HOSPITAL
- LIBRARY
- CLINIC
- MUNICIPAL AIRPORT
- POLICE

ACTIVITY TRAILS

TYPE

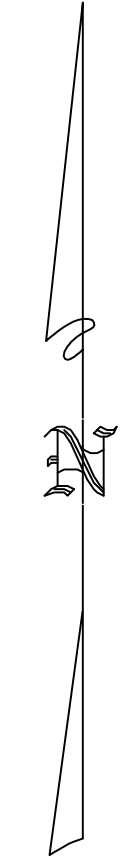
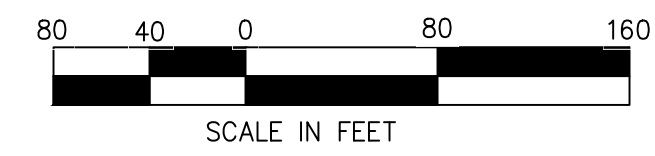
- MULTI-USE PATH
- >4 FT SHOULDER
- BIKE LANE
- SHARROW
- FUTURE
- PARK
- PARK WITH RESTROOM
- Road Centerline
- MOSES LAKE

The Trails Planning Team meets the 2nd Tuesday of each month. For more information contact Moses Lake Parks and Recreation at: (509) 764-3805. <http://cityofml.com/TP>

0 1,750 3,500 7,000 10,500 14,000 Feet

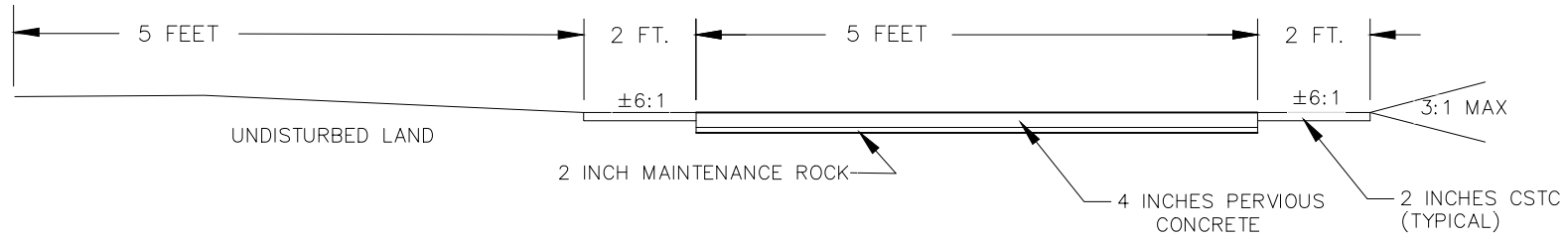
ATTACHMENT 5





ATTACHMENT 6

MUNICIPAL SERVICES DEPT. - ENGINEERING DIVISION	INIT	DATE
CITY OF MOSES LAKE		
GRANT COUNTY		
PIONEER MEADOWS TRAIL		
RLG DRAWN		
LORI CHECK		
AS SHOWN SCALE		
10/16 DATE		
SURVEY:	SHEET	X
INST: TOPCON GR3	OF	X
DATE OF SURVEY:	X-XXX	
SOFTWARE: AUTOCAD 2017 C3D	FILE NO.	



TYPICAL PATHWAY SECTION

PIONEER MEADOWS PEDESTRIAN TRAIL
TYPICAL CROSS SECTION

MUNICIPAL SERVICES DEPT. – ENGINEERING DIVISION

DRAWN	RLG	CITY OF MOSES LAKE
CHECK	SMO	
SCALE	NTS	
DATE	12/16	
		GRANT COUNTY
		WASHINGTON