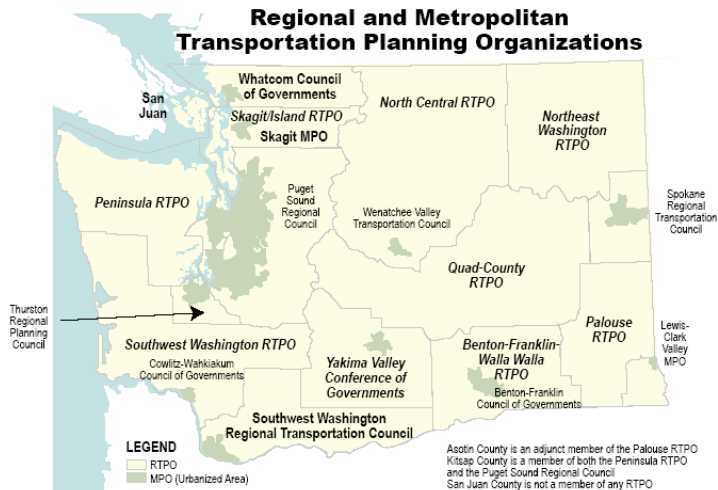


QUADCO

Regional Transportation Planning Organization (RTPO)



QUADCO is the 4-county region in the center.

FAST FACTS



4 Counties



32 Cities and Towns



3 Legislative Districts

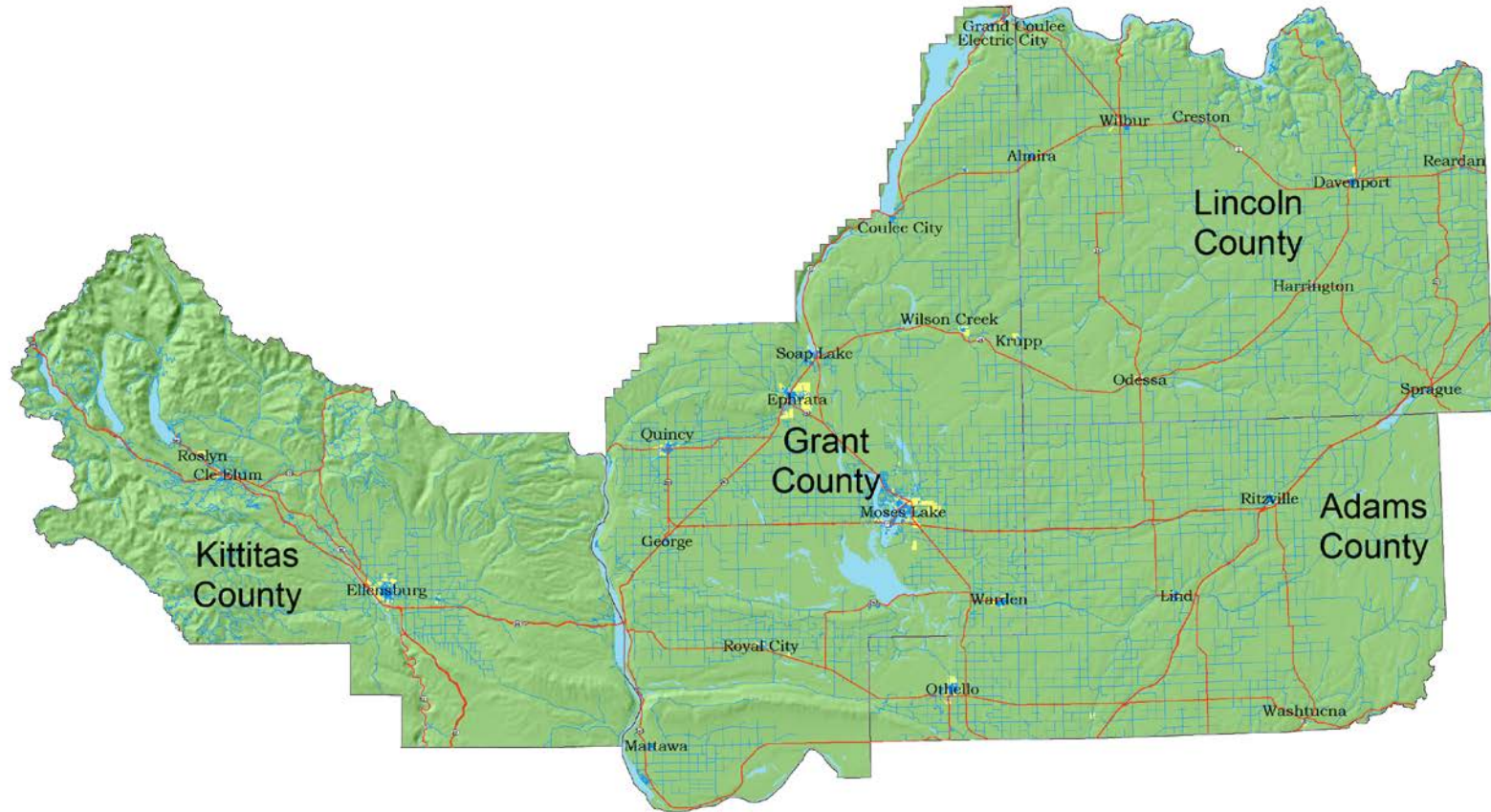


3 WSDOT Regions



No Metropolitan Planning Organizations

QuadCo



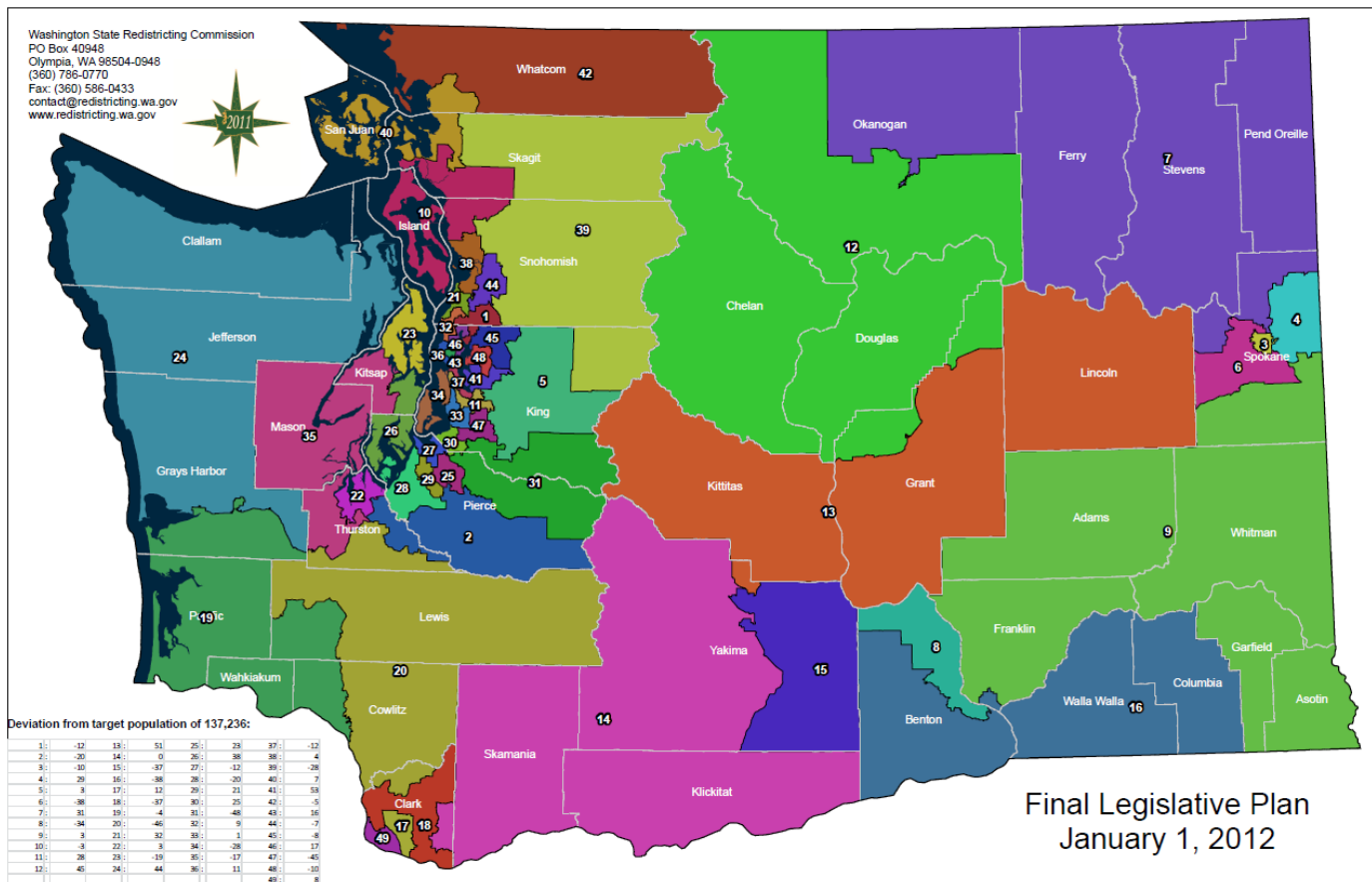
This is not a survey. Actual relationships and distances between features may be different from those depicted on this map. Accurate measurements are required in order to verify these relationships and distances.

Total Residents in all 4 counties = 165,100

Moses Lake	21,600	Wilbur	875
Ellensburg	18,440	George	720
Ephrata	7,930	Reardan	570
Othello	7,695	Coulee City	565
Quincy	7,235	Lind	565
Mattawa	4,460	South Cle Elum	530
Warden	2,710	Sprague	440
Royal City	2,210	Harrington	415
Cle Elum	1,870	Almira	280
Davenport	1,685	Creston	230
Ritzville	1,680	Washtucna	215
Soap Lake	1,530	Wilson Creek	205
Kittitas	1,475	Hartline	155
Grand Coulee	1,050	Hatton	110
Electric City	1,010	Krupp	50
Odessa	900		
Roslyn	895		
		Unincorporated Grant County	41,470
		Unincorporated Kittitas County	18,890
		Unincorporated Adams County	9,135
		Unincorporated Lincoln County	5,305

Source: April 1, 2014 Population of Cities, Towns, and Counties;
Washington State Office of Financial Management, Forecasting Div.

QUADCO Includes 3 Legislative Districts



QUADCO Includes 3 WSDOT Regions



QUADCO brings
Central Washington
cities and counties
together



It's a great place to live and visit



Population Change from 2004 to 2014



QUADCO County breakdown

Grant	17.63 % growth
Kittitas	14.49 % growth
Adams	10.93% growth
Lincoln	3.83 % growth

All QUADCO 15.02 % growth

Washington State

12.24% growth

Puget Sound Counties

(King, Pierce, and Snohomish)

12.10% growth



QUADCO has 14% of Washington's Land Area

9,214 square miles of land
=
14% of the state's land areas



QUADCO has
21% of Washington's Road Miles
with 17% county roads

8,496 miles of roadway in QUADCO

=

21% of the all the roads in the state

(39,867 centerline mileage statewide)

A photograph of a concrete bridge over a stream. The bridge is supported by a stone retaining wall. The stream flows through the center of the bridge. There are trees and foliage in the background and foreground.

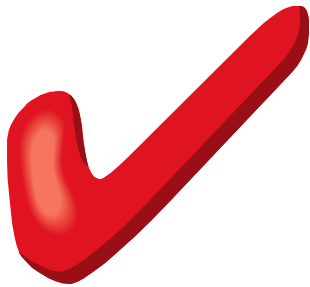
QUADCO has 17% of Washington's Bridges

**551 county owned bridges
(not including city and state bridges)**

=

**17% of bridges in the state
(3,270 total bridges statewide)**

QUADCO's limited resources
must stretch to:



**Maintain almost the
same amount that
WSDOT
maintains statewide
(97%)**

7,044 miles of state highways as compared to 6,858 miles of county owned roadway in QUADCO (does not include the city roadway miles)

I-90 investments in QUADCO area

Remember:

- QUADCO has 2% of the state's population.
- QUADCO also has 68% of I-90, and 26% of all of the interstate system in the State of Washington.
- This major interstate system is a necessity for ALL of the state, not just the residents in the QUADCO counties.
- All trips start and end on the local road system.
- Heavy investments for I-90 distort the amount the state is providing our area.
- QUADCO has transportation needs that are unfunded.

QUADCO's Priorities:



PRESERVATION: Keep our existing roads and bridges functional.



SAFETY: Reduce accidents with safety improvements.



FREIGHT AND GOODS: Improve the flow with all-weather roads.

QUADCO Priority: Preservation

**Keep our Existing
Roads and Bridges
Functional.**

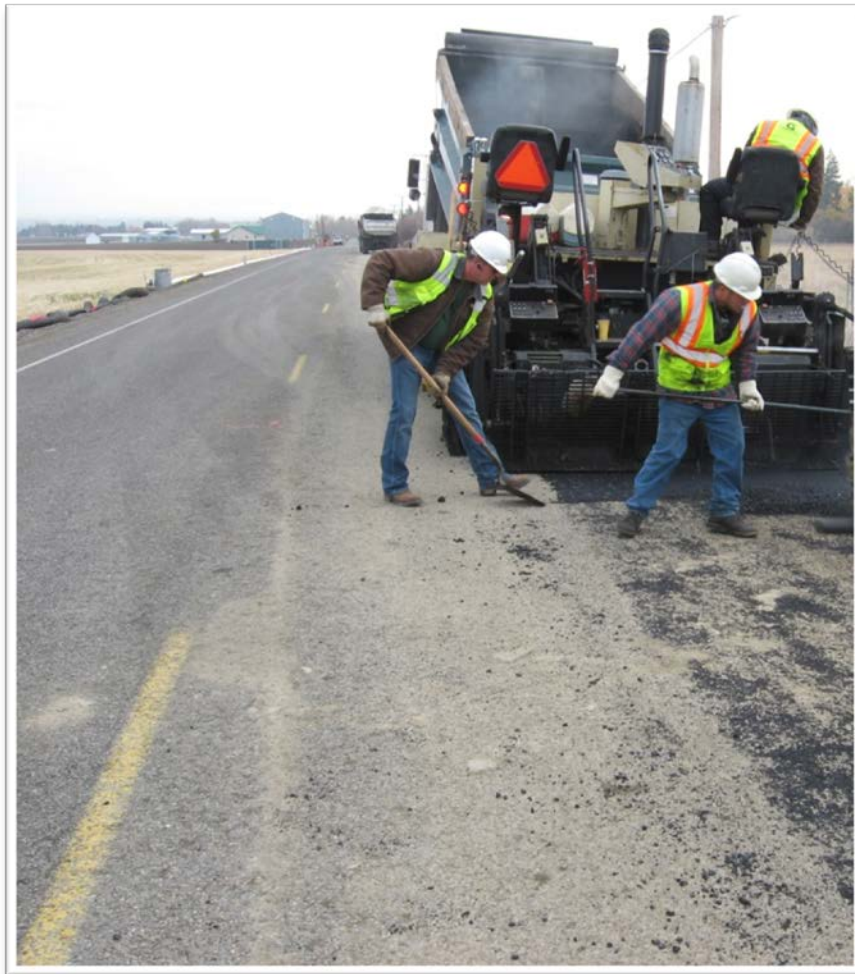


PRESERVATION

One priority for QUADCO is preservation.

Keeping our existing roads and bridges functional requires adequate maintenance and preservation budgets.

The four QUADCO counties (cities included) use about 46% of their total budget for these activities.



QUADCO agencies use their resources wisely.

Approximately \$3,250 per mile is spent on maintenance and preservation. This is well below the total amount of \$7,350 per mile spent by all counties statewide.

PRESERVATION

However some needs are not addressed because of limited funding – and fluctuating petroleum and materials costs are widening this gap.



PRESERVATION

It's even worse for QUADCO cities. They do not have dedicated revenue for maintenance and preservation work.

This kind of expense must compete with other departments for local general funds.



There are reasons why we need more maintenance funds to remove roadside banks.

Blowing and drifting snow combined with large roadside banks makes snow removal difficult.

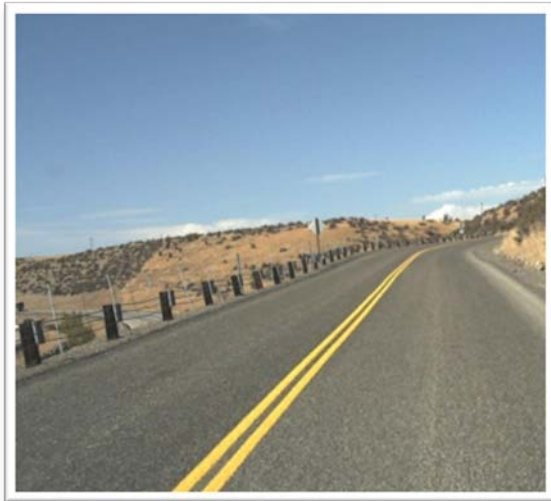


Sometimes you don't know what lurks
inside the snow drifts



QUADCO Priority: Safety

**Reduce accidents
with safety
improvements.**



Another priority for QUADCO is safety.

Safety improvements reduce accidents that involve property damage, personal injuries, and fatalities.

SAFETY

All construction projects should improve safety to some degree.



The most dangerous Washington State roads are two-lane county roads with a fatality collision rate of 1.28 per 100 million vehicle miles traveled.

SAFETY

The fatality rate for state highways is 0.58, for city streets is 0.63.

Improvements to two-lane county roads are needed to reduce the number of fatal collisions in Washington each year.



Failures and restrictions are a concern for all sizes of bridges.

Funding is more readily available for bridges that are at least 20 feet long.

SAFETY

Some regional RAP programs fund smaller structures on rural arterials and collectors leaving no funding for smaller structures on urban streets and rural local access roads.



SAFETY

Interstate systems are designed to the highest standards, have the highest volumes, and the highest speeds – yet they have the lowest fatality rate.

Local roads have the highest fatality rates and safety funding should be prioritized according to risk.

QUADCO Priority: Freight and Goods

**Improve the flow of
all-weather roads.**



FREIGHT AND GOODS

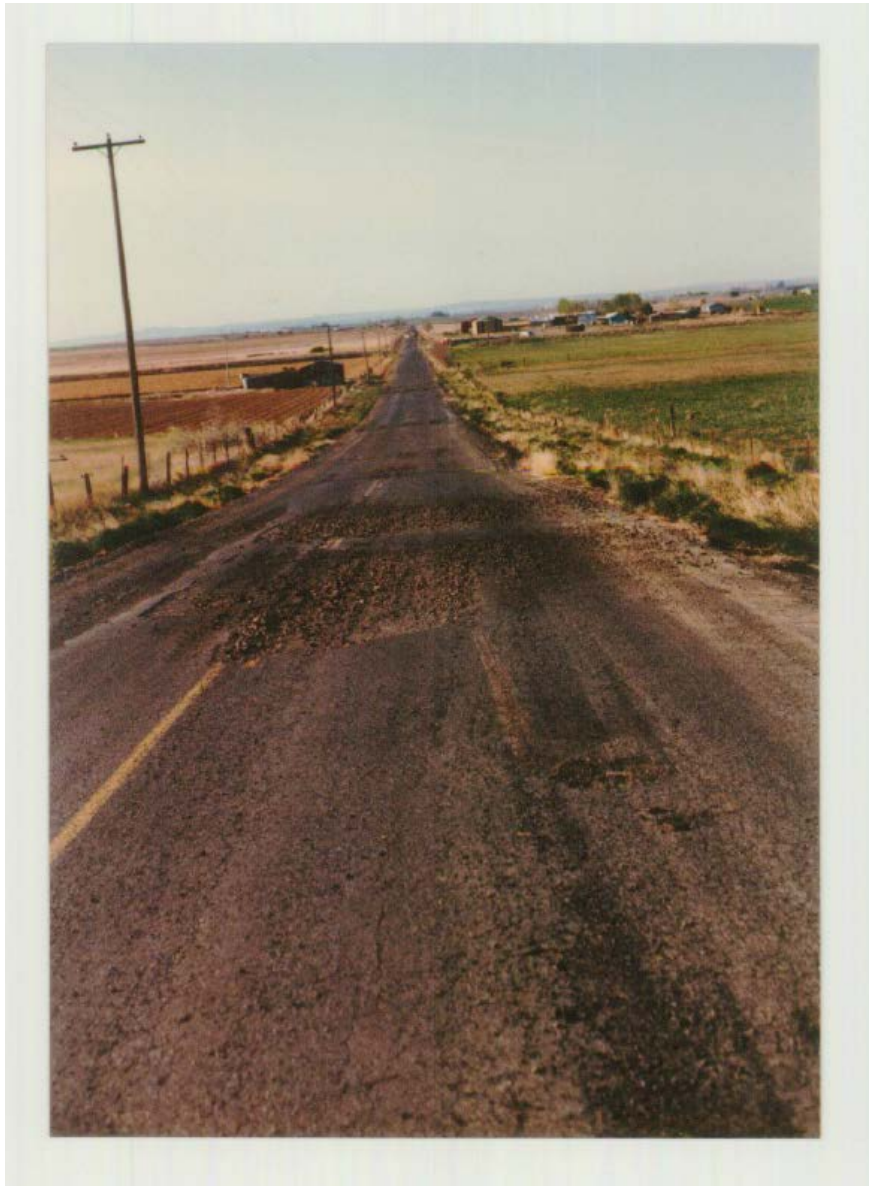
The movement of freight and goods is important to our local and state economy. However, some of QUADCO's roads do not have adequate sub structure to support heavy truck loads during spring thawing conditions.

Roads that **DO** have adequate sub structure are referred to as **All Weather Roads**.



FREIGHT AND GOODS

Many of QUADCO's roads that are not built to an All Weather Road Standard are either closed or restricted during the spring thaw. This can hinder the movement of goods and services. Improving the road's base and surfacing to an All Weather Road Standard solves this problem.



FREIGHT AND GOODS

QUADCO Counties have 2,000 miles of road that are classified in the freight and goods transportation system.

The majority of these roads are inadequate and may be restricted throughout the year.



FREIGHT AND GOODS

Roads needing improvements to meet all-weather road standards:

✓ Adams County: 316 miles or 58%.

✓ Grant County: 808 miles or 90%.

✓ Lincoln County: 631 miles or 95%.

✓ Kittitas County: Rarely restricts travel on roads.



This driver ignored spring weight restrictions on a paved road not built to all-weather standards.

This truck failed to abide by Lincoln County's spring load restrictions on a gravel road.





FREIGHT AND GOODS

All Weather Roads in QUADCO are not only important to the local areas, but also the state.

This region has the greatest amount of harvested cropland in the state, requiring the ability to transport from farm to market without restrictions.

QUADCO Has 31% of the State's Harvested Croplands

QUADCO County breakdown (2012)

Grant	525,432 acres	12.1% of state
Lincoln	383,304 acres	8.8% of state
Adams	364,428 acres	8.4% of state
Kittitas	51,234 acres	1.2% of state

QUADCO area	1,324,398 acres	30.5% of state
--------------------	------------------------	-----------------------

Washington State	4,342,904 acres of cropland
-------------------------	------------------------------------

THANK YOU!

