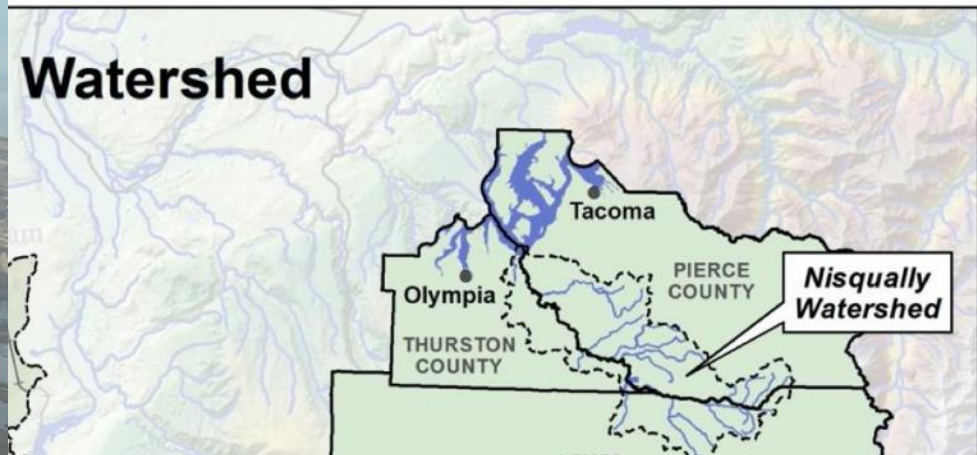


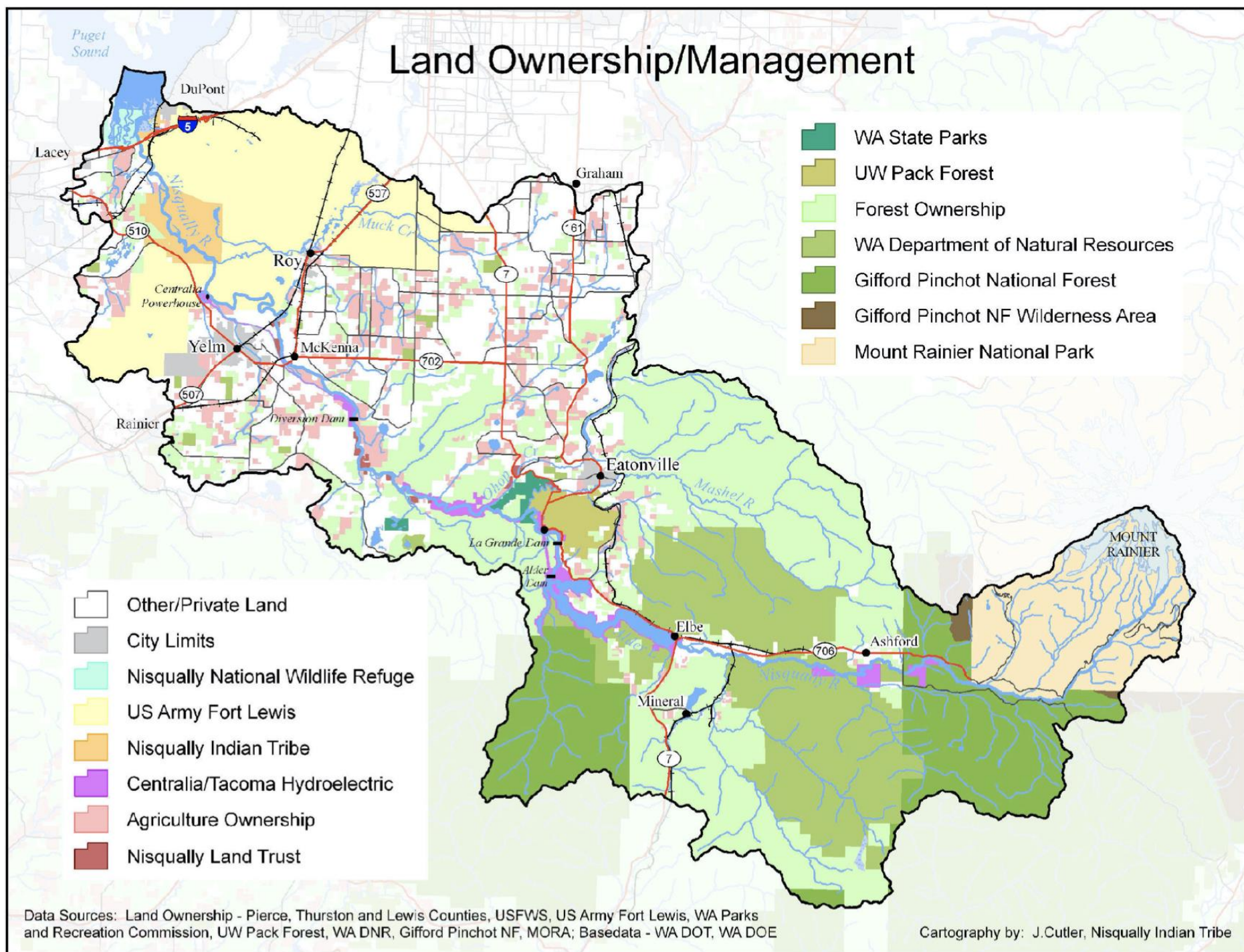


# Salmon and Farms: Collaborative, Creative Solutions in the Nisqually Watershed





# Land Ownership/Management



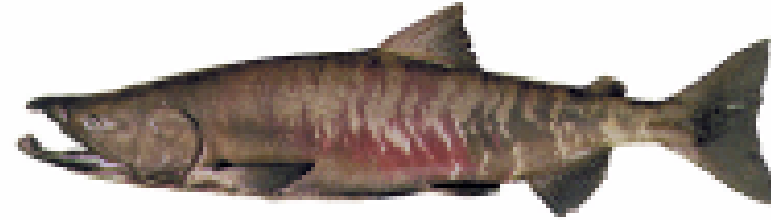
Data Sources: Land Ownership - Pierce, Thurston and Lewis Counties, USFWS, US Army Fort Lewis, WA Parks and Recreation Commission, UW Pack Forest, WA DNR, Gifford Pinchot NF, MORA; Basedata - WA DOT, WA DOE

Cartography by: J.Cutler, Nisqually Indian Tribe

# Nisqually salmon species:



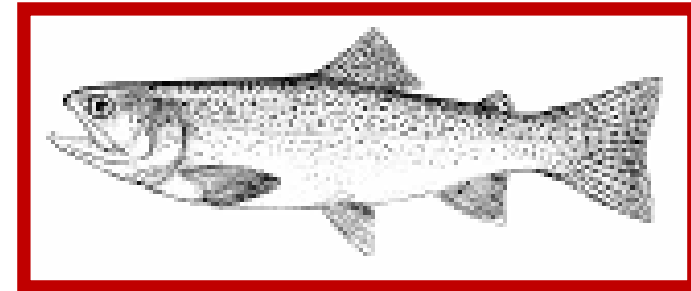
**Chinook, ESA listed 1999**



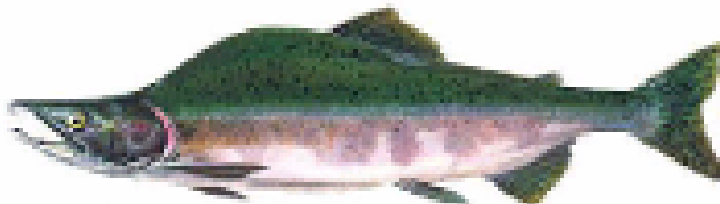
**Chum**



**Coho**



**Steelhead, ESA listed 2007**

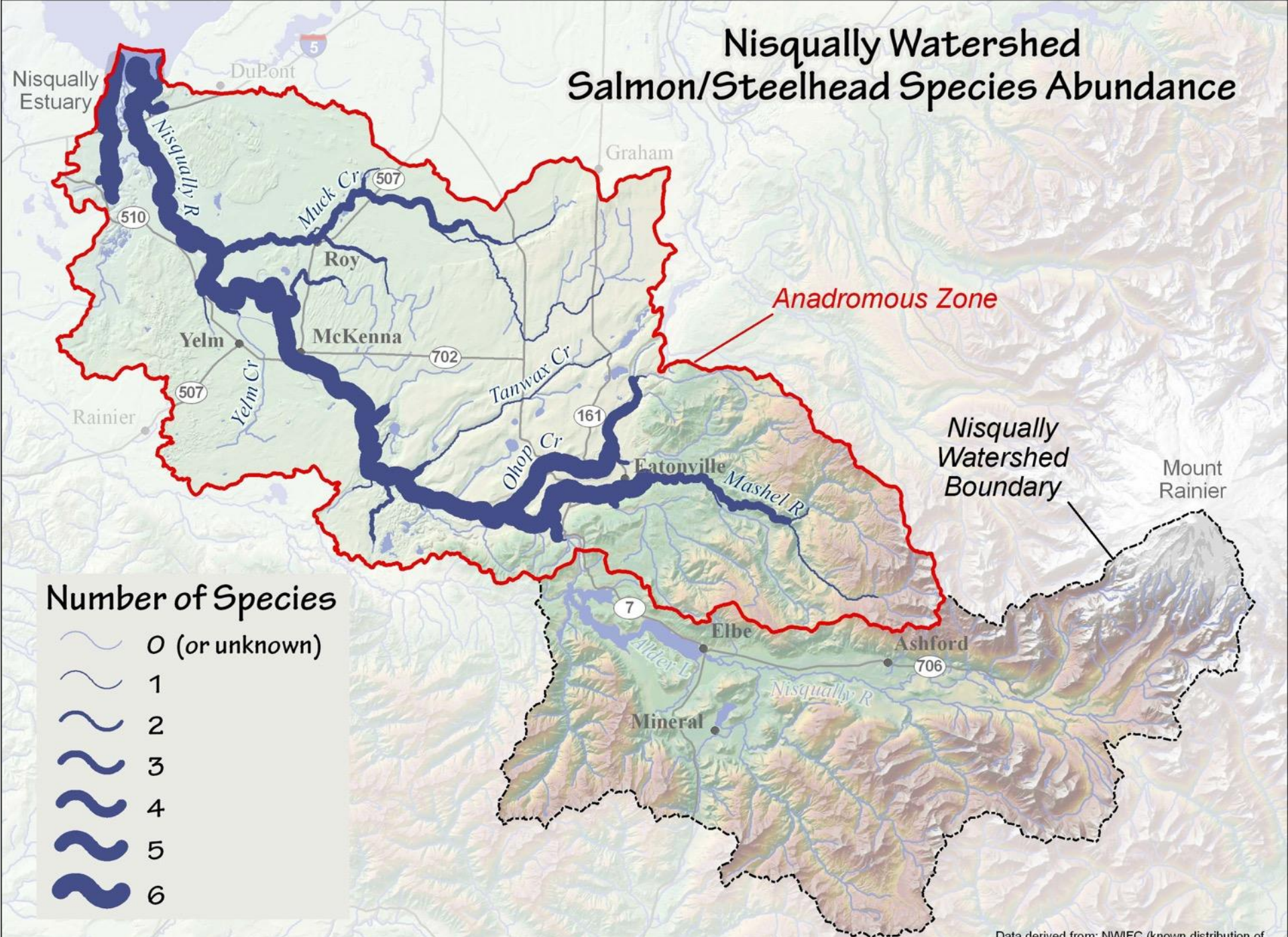


**Pink**



**Cutthroat**

# Nisqually Watershed Salmon/Steelhead Species Abundance





Founded 1987

- **Counties**
- **Cities**
- **State agencies**
- **Federal agencies**
- **Nisqually Tribe**
- **Local organizations**
- **Watershed citizens**

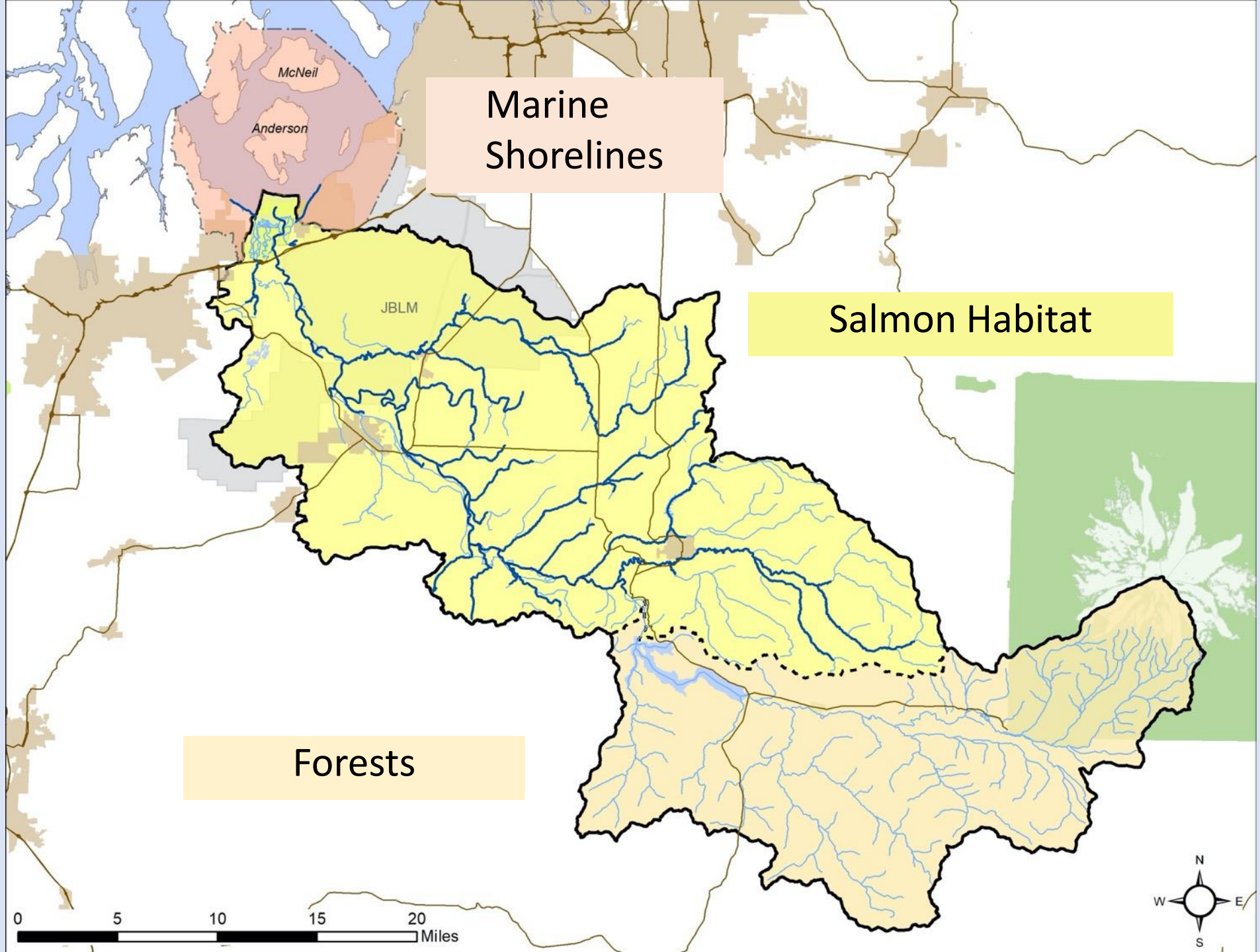




**We protect and steward lands  
to permanently benefit  
the water, fish, wildlife, and people  
of the Nisqually River Watershed**



## Conservation Priorities





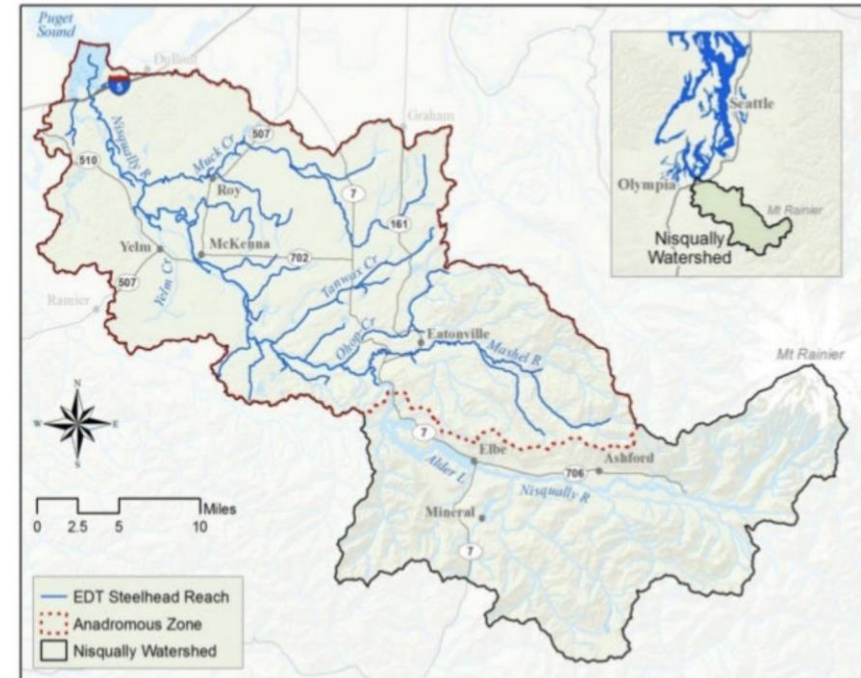


# Nisqually Chinook Recovery Plan

**August 2001**

Prepared by the  
**Nisqually Chinook Recovery Team**

## NISQUALLY RIVER STEELHEAD RECOVERY PLAN



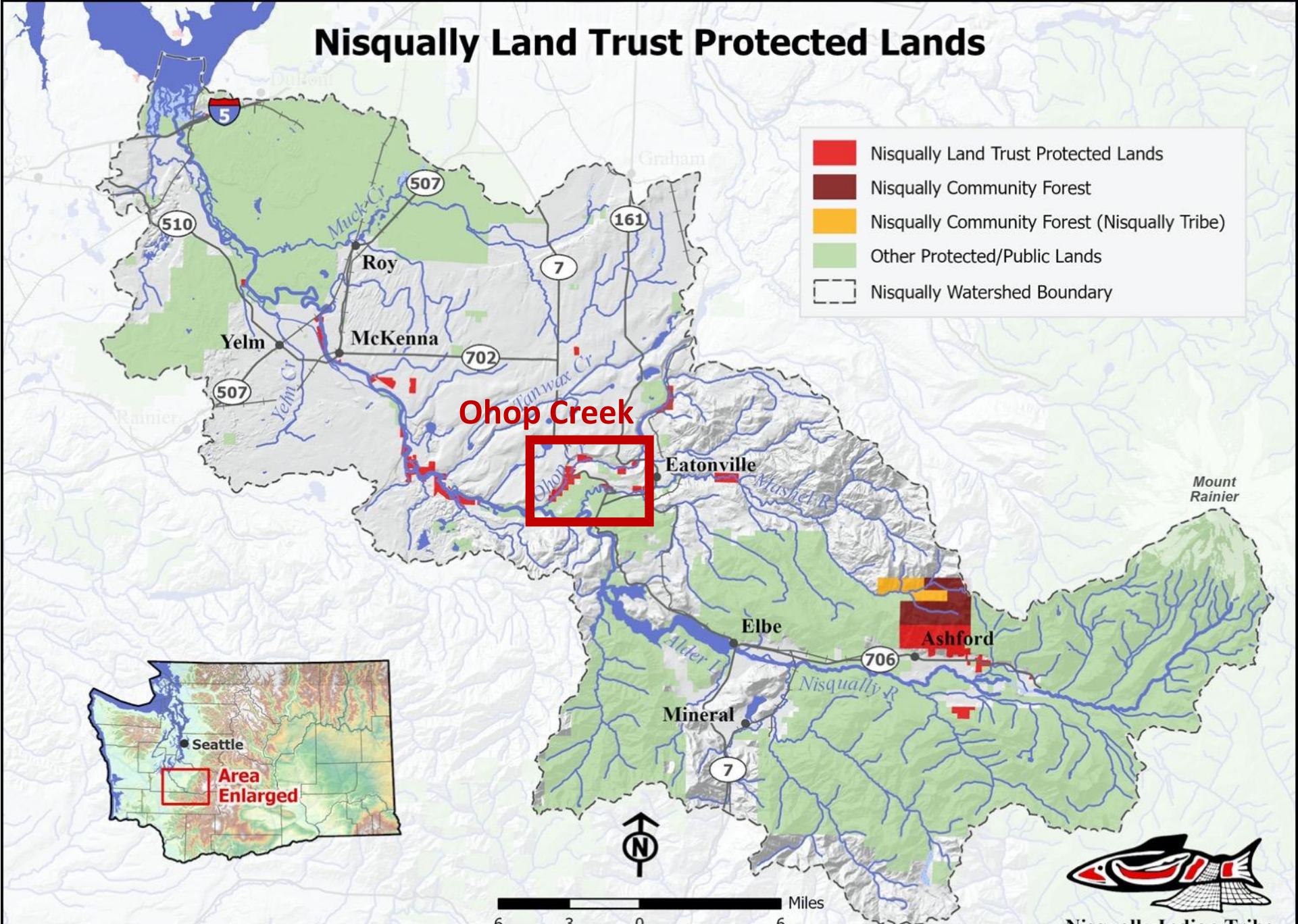
**DRAFT**

PREPARED BY:

Nisqually Steelhead Recovery Team  
Contact: Sayre Hodgson, Nisqually Indian Tribe

July 2014

# Nisqually Land Trust Protected Lands



Data derived from: City of Olympia, JBLM, Lewis, Pierce and Thurston Counties, Mt. Rainier National Park, Nisqually Indian Tribe, Nisqually Land Trust, WADOE, WADNR, WSDOT, USGS



Nisqually Indian Tribe

Cartography by: J.Cutler, 7/19/2022



The Ohop families planned to create prime farmland from the swampy, vegetative floor of the valley. At first, not much land could be used and the few crops grown were found dug up by beavers. Heavy brush had to be cleared. Flooding, whether by beaver, rain, or run-off from Ohop Lake, had to be resolved.

He remembers as a boy that he and other children had to “shimmy on hands and feet” atop a fence rail to get back home after school because every winter the valley flooded from one end to the other.

His father, undaunted by the flooding, took a shotgun, potato hook, and “boat” (which was really a hog trough), went to the submerged potato patch, and took aim. After a few shots, potatoes rose to the surface of the water and Jonas hooked them into the “boat.” As they gathered the potatoes, ducks flew over and Nels lifted his gun and got two ducks for supper.



# Ohop Creek

- Trees and shrubs cleared from valley floor







# Ohop Creek

- Lower 4 miles ditched, straightened



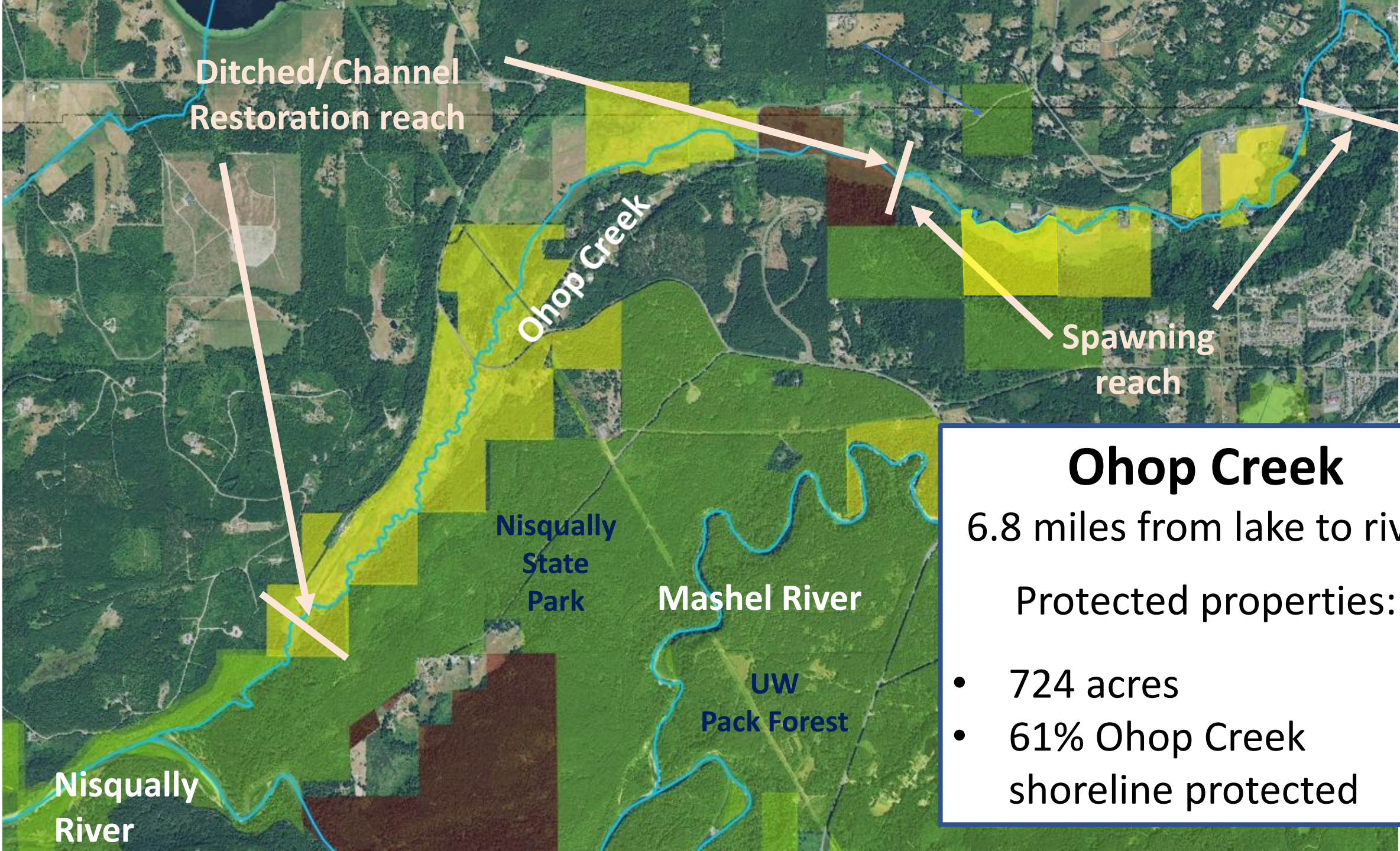


# Ohop Creek

Upper 2 miles –

- more natural stream channel
- good gravel for salmon spawning





Ditched/Channel  
Restoration reach

Ohop Creek

Spawning  
reach

Nisqually  
State  
Park

Mashel River

UW  
Pack Forest

Nisqually  
River

**Ohop Creek**  
6.8 miles from lake to river

Protected properties:

- 724 acres
- 61% Ohop Creek shoreline protected

# Ohop Creek 2008



# Ohop Creek 2009







**2021 -  
Twelve years after stream  
channel restoration**





Ohop Valley Restoration







**Land swap**

**Creek  
shoreline for  
pasture**

Thank you!

