

# Walla Walla Integrated Plan



**COLUMBIA RIVER POLICY ADVISORY GROUP (CRPAG)**  
**DECEMBER 13, 2018**



Presented by  
**Tom Tebb, Director**  
**Office of Columbia River**  
**Washington State Department of Ecology**

# Final 10-Year Pilot Progress Report

Ecology engaged the Partnership early in 2018 to help inform next steps

Ecology participated in the drafting and review of the Final Progress Report

Ecology, CTUIR and the Partnership are currently engaging 16<sup>th</sup> District Legislators to sponsor amendments to RCW 90.92



For Fish. For Farms. For Everyone.

## Walla Walla Pilot Local Water Management Program



### Final Progress Report

October, 2018

*Submitted to the Washington  
State Legislature by the*

**Walla Walla Watershed Management Partnership**

*in collaboration with the Washington State Department of Ecology*

Pursuant to Second Substitute House Bill 1580, Chapter 183, Laws of 2009 (RCW 90.92)

# Walla Walla Basin Integrated Plan

**FUNDING:** \$1.5 million in  
OCR Capital Budget request  
**EST. NWS:** TBD  
**OCR DIR:** Instream Flows

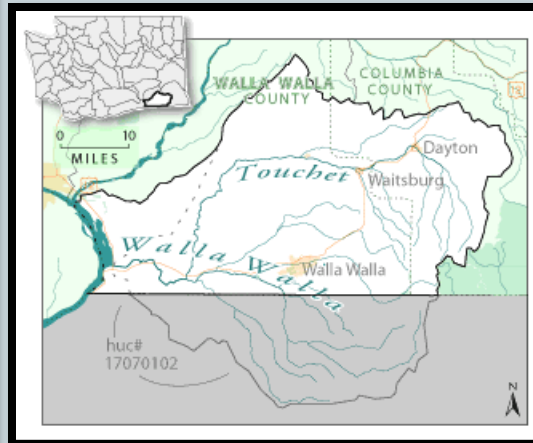
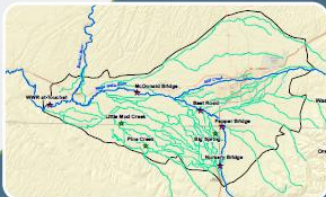
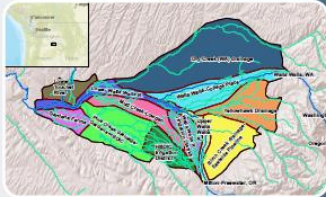
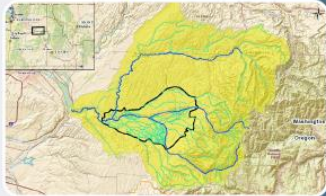
## Walla Walla Basin Integrated Flow Enhancement Study

November 2017

Prepared for:  
Office of Columbia River

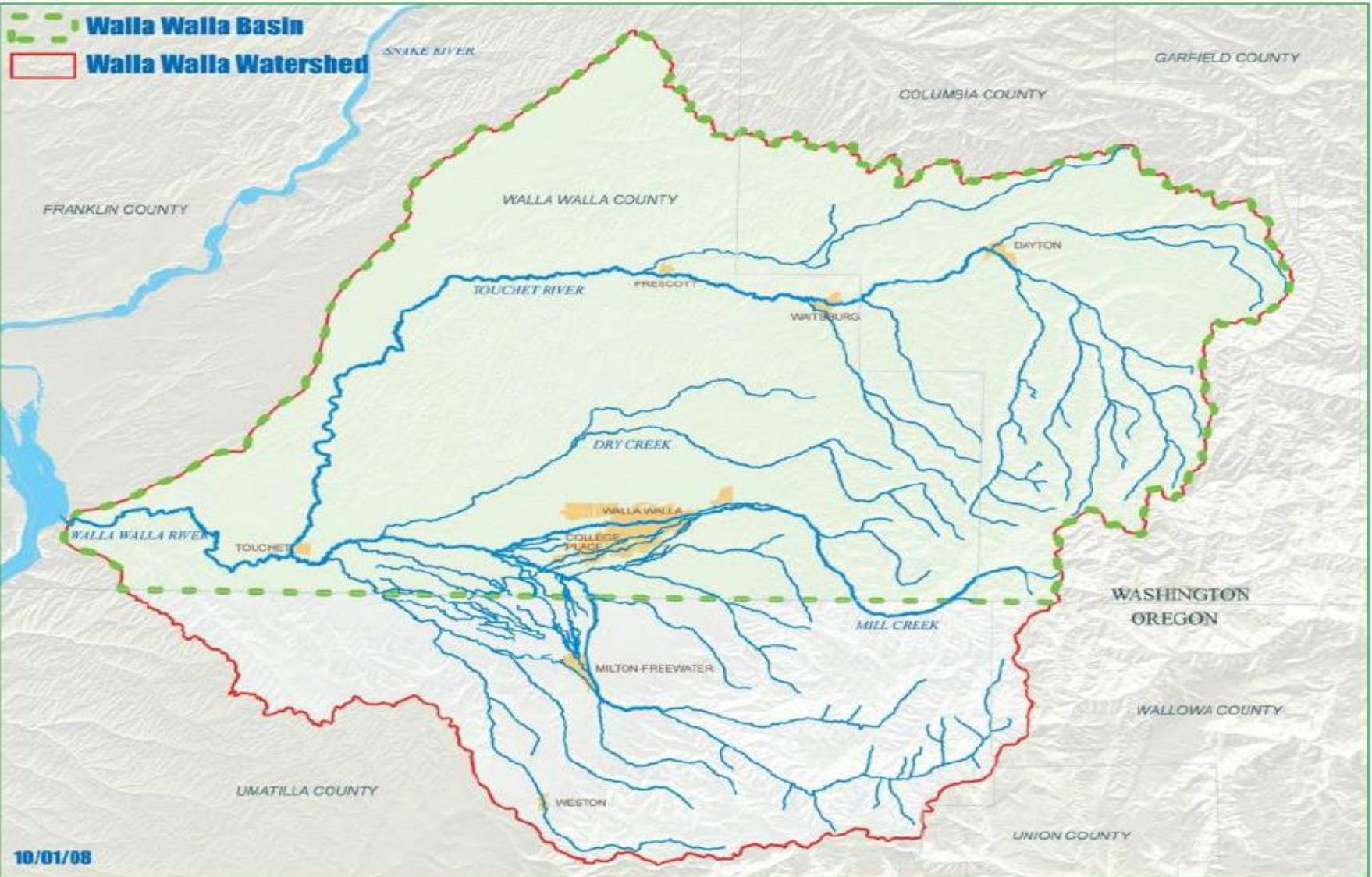
Prepared by:  
Walla Walla Watershed Flow Study Steering Committee

Submitted by:  
Walla Walla Watershed Management Partnership





# Walla Walla Basin



10/01/08

# Walla Walla Partnership - Background

- Walla Walla Partnership is a local water management authorized by the state legislature in 2009 through RCW 90.92.
- The law authorized the formation and implementation of a local water management program for 10 years to address the complexity of current and future water resource issues in the basin.
- Over the past 10 years, Walla Walla Partnership has achieved some successes, however the current authority and structure isn't sufficient to address current and future water resource challenges.



# A New Direction in Strategy to Achieve Flow from Flexibility

- The Partnership board and staff, CTUIR, and community stakeholders have been in a discussion with Ecology about accomplishments, reviewing existing challenges and recommendations for the Partnership's future.
- All parties agree that significant changes are needed to face continuing and growing water-supply challenges in the Walla Walla basin.
- The Walla Walla Partnership in collaboration with Ecology's Office of Columbia River is requesting the State legislature through revisions to RCW 90.92 to extend the timeframe to June 30, 2021.
- The additional 2-year timeframe will allow the Partnership to explore options for a new evolved organization.

# Recommendations of the Final Progress Report

Specifically, the Partnership would:

- Review existing elements of the current structure and program activities such as the water bank, local water plans and water acquisition strategies,
- Undergo performance and financial audits to analyze Partnership outcomes and inform recommendations for existing authorities and programs,
- Prepare a long-term (30 year) integrated water resource strategic plan for the basin, including a dedicated funding and organizational structure,
- Coordinate with Ecology's Office of Columbia River to develop a programmatic EIS for the strategic plan, and
- Work with Washington and Oregon to explore and recommend an inter-state agreement to maximize bi-state water management coordination





# QUESTIONS???

**CONTACT:**

CHRIS HYLAND

(509) 524-5217

TOM TEBB

(509) 574-3989