

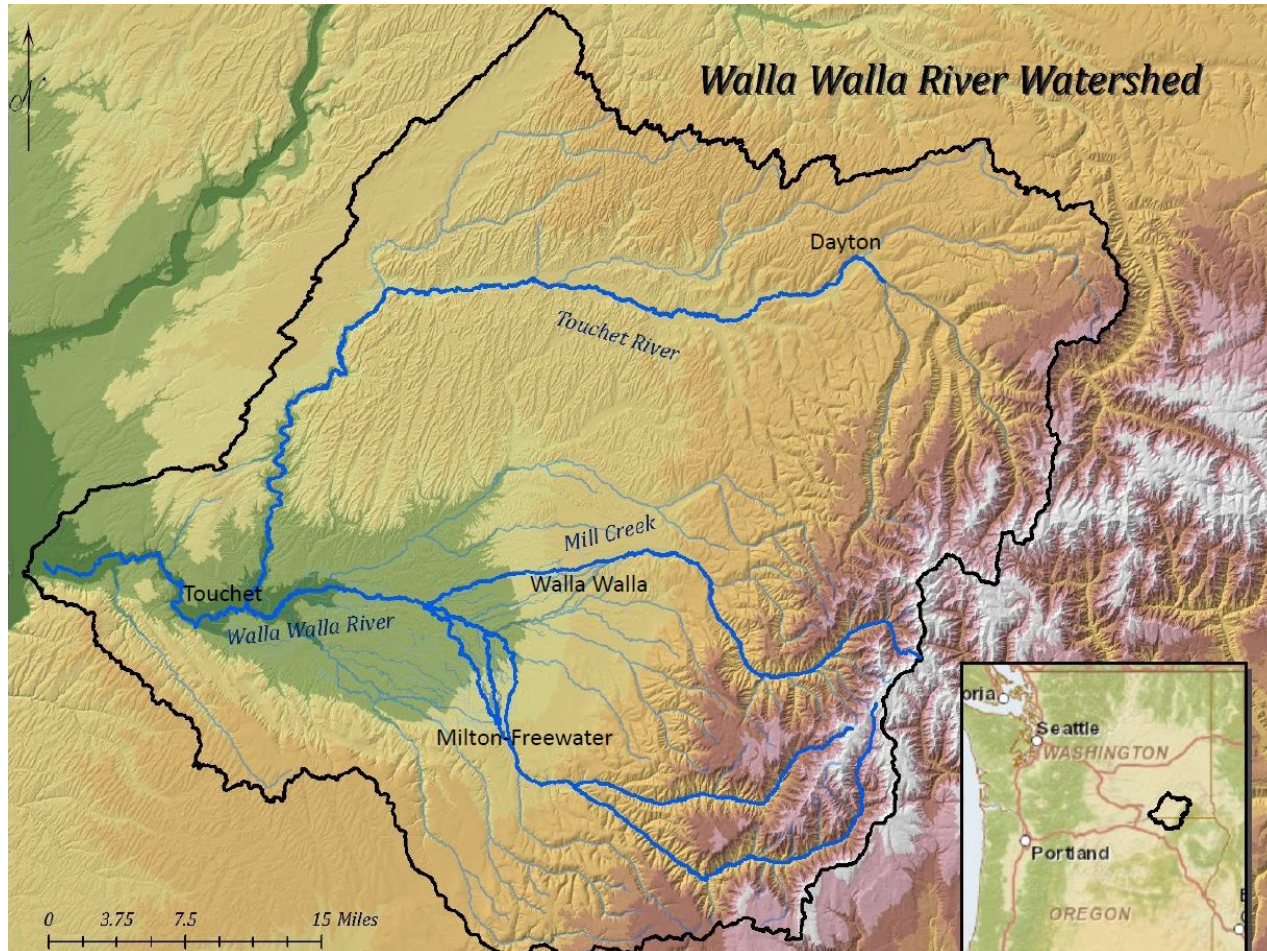


# Columbia River Policy Advisory Group

June 4, 2020



# Walla Walla River Watershed = 1758 mi<sup>2</sup>





# Streamflow discharge fluctuations



April 2019

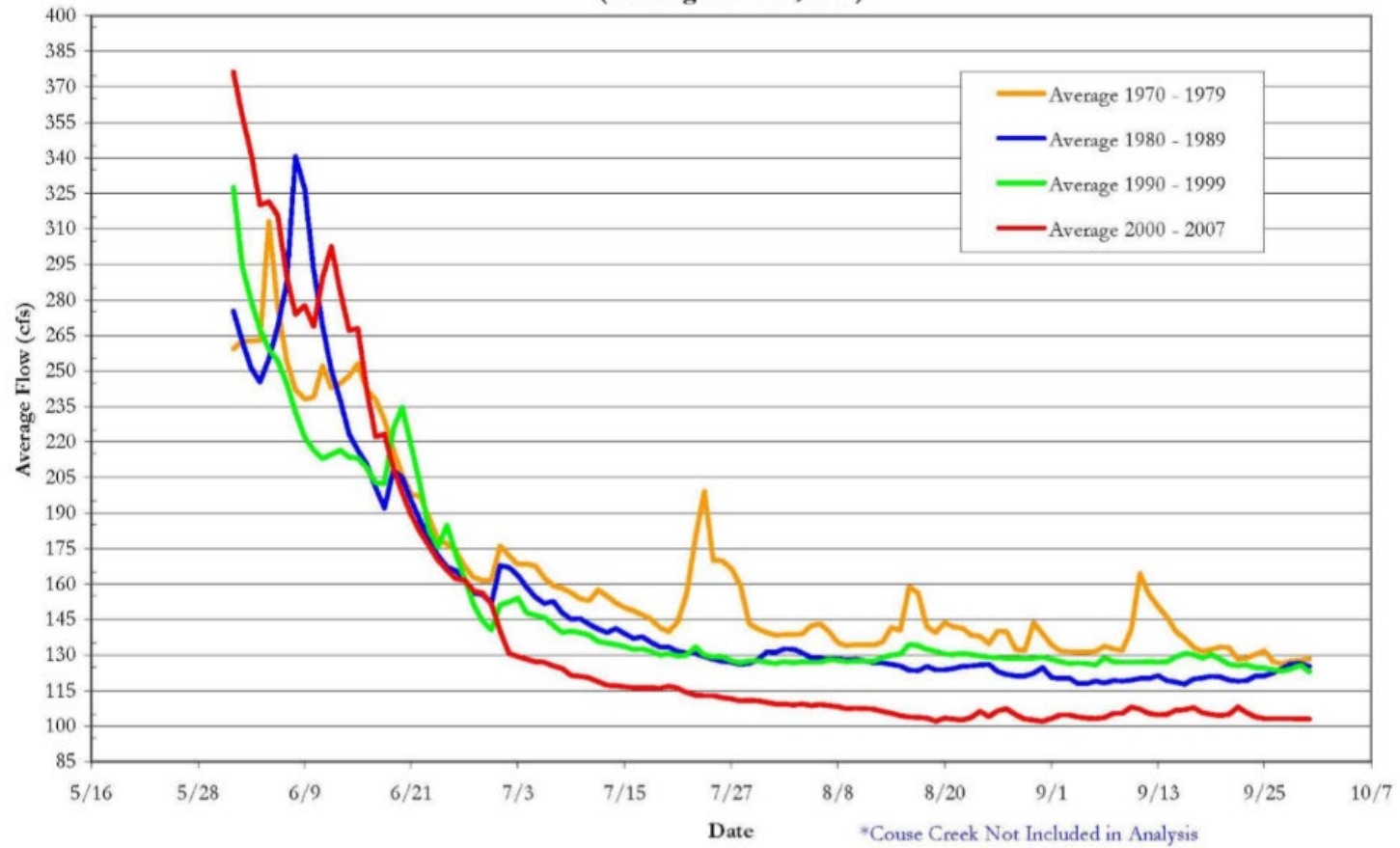


June 2019



# Streamflow

Decadal Comparison Walla Walla River Flow  
OWRD Gauges SF + NF: WY 1970 to 2007  
(Missing WY 1991, 1992)



\*Couse Creek Not Included in Analysis

(WWBWC)





# Flow from flexibility

## Walla Walla Water Management Partnership Pilot

Local water plans

Water banking

Water rights acquisition

Exempt well mitigation program

Critical low flow plans



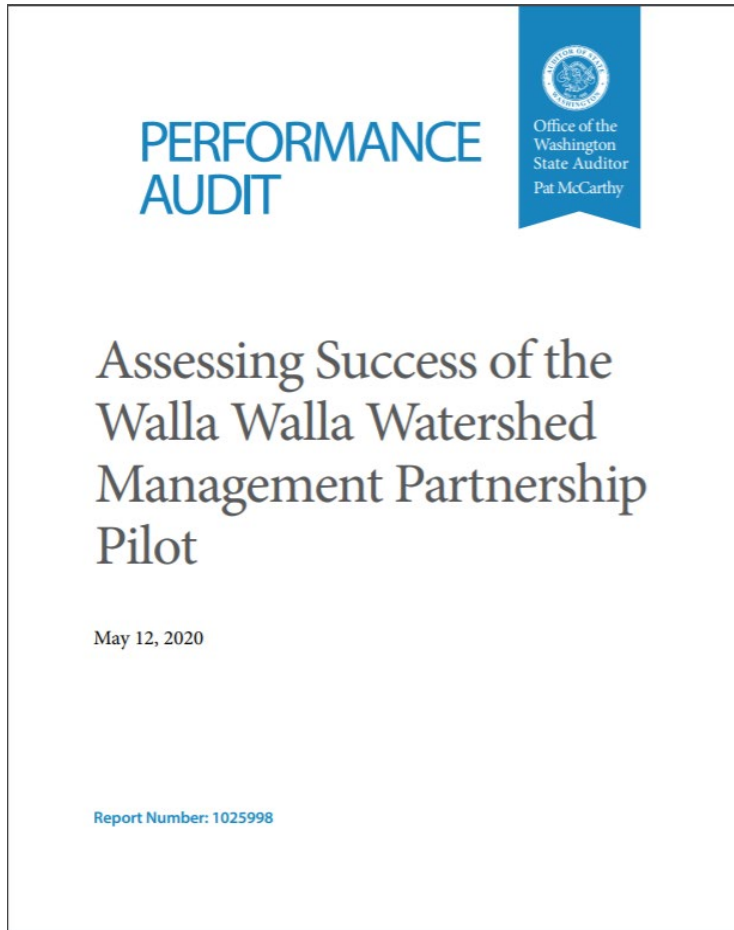
# Legislation

- **Second Substitute Senate Bill 5352 (2019)**
  - Changes made to RCW 90.92.010, 90.92.050, and 90.92.060. Effective June 30, 2019
  - Extended the pilot program two years
  - Ecology, WWWWMP, and CTUIR will work collaboratively to accomplish new tasks
    - Performance and Financial Audit
    - Flow Enhancement Study
    - 30-year Integrated Strategic Plan (WWW 2050)
    - Joint Legislative Report
  - Expires June 30, 2021





# Performance audit



Return water management to Ecology

Partnership continue in an advisory role

Partnership work with Ecology to finalize long-term plan

Washington explore a bi-state compact with Oregon



# Strategic plan

Sign in



## Department of Ecology Committees, Boards, and Workgroups

[Portal ID #1962]

Overview

View our committees

### Walla Walla Water 2050



#### *Strategic Planning Kickoff*

A two-year strategic planning effort by the Washington State Department of Ecology, Walla Walla Water Management Partnership, Confederated Tribes of the Umatilla Indian Reservation, and Washington and Oregon stakeholders and residents to guide water resource decisions for the next 30 years in the Walla Walla Basin.

[Meeting Information](#)

[Calendar](#)

[Strategic Plan Advisory](#)



Walla Walla Watershed Management Partnership  
For Fish • For Farms • For Everyone.



# Legislative report

Evaluation of Partnership programs

Progress report on strategic planning effort

Recommendations for next steps

**For Fish. For Farms. For Everyone.**  
**Walla Walla Pilot Local Water Management Program**

**Final Progress Report**  
**October, 2018**  
*Submitted to the Washington State Legislature by the*  
**Walla Walla Watershed Management Partnership**  
*in collaboration with the Washington State Department of Ecology*

Pursuant to Second Substitute House Bill 1580, Chapter 183, Laws of 2009 (RCW 90.92)



# Walla Walla water plans and studies

- Walla Walla Basin Integrated Flow Enhancement Study (WWWMP/WWBWC)
  - Walla Walla River flow enhancement focus
  - Started in 2014, wrap up in 2021
  - reservoir or exchange as likely anchor project (or both??)



# Project description

- The Walla Walla Basin-wide Instream Flow Enhancement Study (the Study) will identify and evaluate strategies to increase stream flows in the Walla Walla River. These strategies will address the following problem:
  - “There is a need for increased stream flow in the Walla Walla Basin for native fish, while maintaining the long-term viability of and water availability for irrigated agriculture, residential, and urban use.”

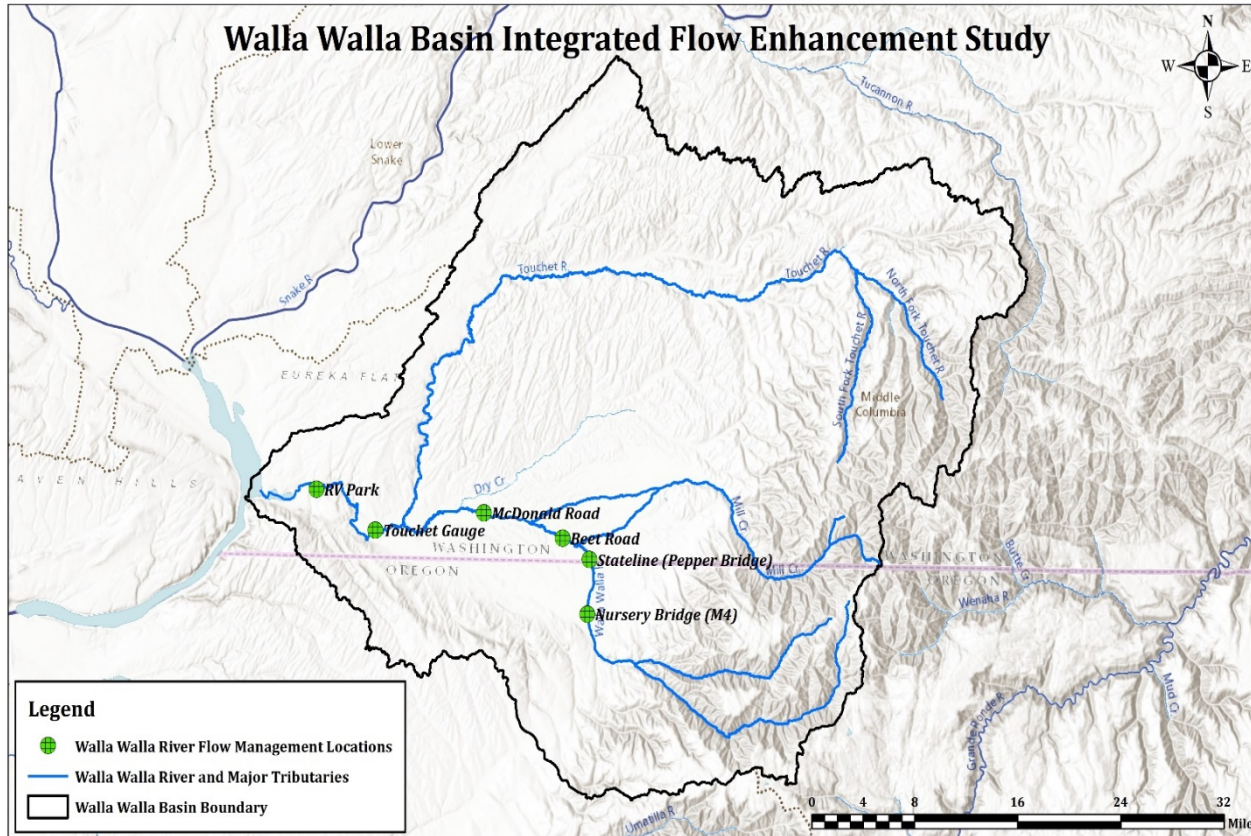


# Project description (cont.)

- Specifically, the study intends to:
  - Improve Walla Walla River stream flows to support harvestable populations of native fish species;
  - Ensure no net loss for water right holders leaving all, or a portion, of their Walla Walla River and tributary water rights in stream for fish;
  - Identify and prioritize actions to achieve stream flow targets;
  - Complete feasibility analyses of actions;
  - Complete initial engineering designs of high priority actions;
  - Identify how to solve the cross-boundary flow protection dilemma; and
  - If funds allow, implement one or more actions.



# Walla Walla Bi State Flow Enhancement Study project



- Large and small scale flow improvement alternatives.
- Will develop a streamflow enhancement scenario to double/triple Walla Walla River stream flow.
- Will oversee the implementation of the projects to improve stream flows.



# Flow Study Steering Committee

- Co-Leads: Walla Walla Basin Watershed Council & Walla Walla Watershed Management Partnership
- Steering Committee Membership– voting members:
  - Gardena Farms Irrigation District #13 (GFID)
  - Walla Walla River Irrigation District (WWRID)
  - Washington Department of Fish and Wildlife (WDFW)
  - Hudson Bay District Improvement Company (HBDIC)
  - Confederated Tribes of the Umatilla Indian Reservation (CTUIR)
  - Oregon Department of Fish and Wildlife (ODFW)
  - Fruitvale Water Users Association (FWUA)
  - City of Milton-Freewater, Oregon
  - City of Walla Walla, Washington
  - Kooskooskie Commons
  - Lowden Consolidated Ditches
  - Washington Water Trust



# Flow Study Steering Committee

- **Technical Work Groups:**
  - Planning/Policy
  - Managed Aquifer Recharge/Shallow Aquifer Recharge
  - Surface Water Storage
  - Columbia River exchange
  - Water Right Transactions
  - Water Conservation
  - Legal



# Flow targets at each management point

Time Period	Flow Study Flow Targets
April 1 – June 15	150 cfs
June 16 – June 30	100 cfs
July 1 – November 30	65 cfs





# Projected Flow Study implementation timeline

Biennium	Description
2019 - 2021	Environmental Scoping, Expanded Outreach, NEPA/SEPA Integration Strategy, Interim Resolution to Protect Bi-State Flows, Targeted Feasibility Studies to fill Data Gaps, Selection of Preferred Alternative
2021 - 2023	Design of Preferred Alternative, Final Resolution of Legal Issue to Protect Bi-State Flows, Implementation of Early Action Items
2023 - 2025	Construction of Preferred Alternative, Monitoring of Successes of Early Action Items
2025 - 2027	Construction of Preferred Alternative, Monitoring of Successes of Early Action Items



# Walla Walla Basin Flow Study

2019 Flow Study Update

November 2019 Draft



Prepared for:  
Office of Columbia River

Prepared by:  
Walla Walla Watershed Flow Study  
Steering Committee

Submitted by:  
Walla Walla Watershed Management  
Partnership

**JACOBS**



WALLA WALLA WATERSHED MANAGEMENT PARTNERSHIP



- Draft 2019 Report was finalized at end of December
- Will be integrated with the Walla Walla Water 2050 Planning process



Walla Walla Watershed Management Partnership

For Fish • For Farms • For Everyone.

# Partnership future?

- Partnership was given a 10 year timespan, through 2019
- Partnership re-authorized through June, 2021
- After 2021: Renewed? Change of mission? Combine with an Oregon counterpart to move water issues forward?
- Report to the Legislature in November, 2020 will make a recommendation from the Board & Ecology on Partnership future.



# WWW2050 Strategic Plan

- **2SSB 5352 Strategic Plan requirements:**
  - Partnership and Ecology collaboration
  - 30-year integrated water resource management
  - Explore interstate agreements
  - Due June 30, 2021





# Early accomplishments

- October 2019 Workshop
- Created WWW2050 webpage
- Set up listserv for communications
- Selected consultant team
- Created plan draft outline
- Strategic Planning Advisory Committee (SPAC)
- Working Groups (WGs)
- Resource library
- Tri-Sovereign meetings



# Common themes for the WWWW 2050 vision

- Collaboration
- Vibrant community
- Healthy ecosystem
- Steward the resources from the headwaters to the mouth, from the top of the mountains to the bottom of the basalts
- Plan for the future
  - Increased streamflow
  - Robust economy
  - Sustained groundwater use
  - Climate change
  - Population growth
- Meet instream and out-of-stream needs
- Achieve multiple sustained water uses, now and in the future
- Holistic watershed and water resource management
- Balance competing water interests
- Meet growing demands and protect ecological function



# Barriers for the WWWW 2050 vision

- Overalllocation of water
- Competing interests for water
- Complex hydrology
- Lack of knowledge
- Political constraints
- Lack of funding
- Engaging stakeholders
- Uncertainties
  - Climate change
  - Population growth
  - Economic
- Long-term planning not impeding current activities



# WWW2050 webpage

Sign in



## Department of Ecology Committees, Boards, and Workgroups

[Portal ID #1962]

Overview

View our committees

### Walla Walla Water 2050



#### *Strategic Planning Kickoff*

A two-year strategic planning effort by the Washington State Department of Ecology, Walla Walla Water Management Partnership, Confederated Tribes of the Umatilla Indian Reservation, and Washington and Oregon stakeholders and residents to guide water resource decisions for the next 30 years in the Walla Walla Basin.

[Meeting Information](#)

[Calendar](#)

[Strategic Plan Advisory](#)



Walla Walla Watershed Management Partnership  
For Fish • For Farms • For Everyone.



# Resource library



## Resource Library

[WWW2050 Advisory Committee Page](#)

### Data and Information

- Fish
    - Instream Fish Atlas - [Full Atlas](#) - [Online Maps](#)
    - [WDFW Priority Habitats and Species PHS](#)
    - [WDFW SalmonScape](#)
  - Geology Data - [Oregon](#) - [Washington](#)
  - Geospatial Data - [Oregon](#) - [Washington](#)
  - Groundwater Data - [Oregon](#) - [Washington](#)
  - [NOAA National Centers for Environmental Information](#)
  - Publications - [Ecology](#) - [OWRD](#) - [USGS](#)
  - [Snake River SRB Habitat Work Schedule](#)
  - Surface Water Streamflows- [Oregon](#) - [Washington](#)
- [USGS Data and Tools](#)
  - [USGS Water Mapper](#)
  - [WA Environmental Information Management System](#) (EIM)
  - Water Rights - [Oregon](#) - [Washington](#)
  - Water Rights Mapper - [Oregon](#) - [Washington](#)
  - Well Logs - [Oregon](#) - [Washington](#)
  - Weather
    - Snow Water Equivelant ([SNOTEL](#)) - [Oregon](#) - [Washington](#)
    - [WSU AgWeatherNet](#)
    - [USBR AgriMet](#)

Upload box is not compatible with Internet Explorer 11

Submit File(s) to WWW2050 Resource Library External Upload Box



Drag and drop files  
Browse your device

Before uploading, please be sure you trust this site, have the rights to the data, and want to share this content to the owner of this upload widget.

[View Box Terms of Service.](#)  
[View Box Privacy Notice.](#)

box

### Partner Sites

- [Confederated Tribes of the Umatilla Indian Reservation Department of Natural Resources](#)
  - [Oregon Department of Fish and Wildlife](#)
  - [Oregon Water Resources Department](#)
  - [NOAA](#)
  - [NRCS](#)
  - [Salmon Recovery Funding Board](#)
  - [Snake River Salmon Recovery Board](#)
- [U.S. Army Corps of Engineers](#)
  - [Walla Walla Water 2050 EZview \(Workgroup meetings, presentations, etc\)](#)
  - [Walla Walla Water 2050 Water Management Plan \(Ecology\)](#)
  - [Walla Walla Basin Watershed Council](#)
  - [Walla Walla Watershed Management Partnership](#)
  - [Washington Department of Ecology](#)
  - [Washington Department of Fish and Wildlife](#)



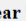
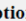
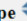
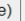


Walla Walla Watershed Management Partnership  
For Fish • For Farms • For Everyone.

# Resource library

## Documents

 Search Resource Library

Title & File Name 	Author 	Pub Year 	Description 	Document Type 	Key Words (hide) 
<a href="#">Walla Walla River Basin pH and Dissolved Oxygen Total Maximum Daily Load: Water Quality Improvement Report</a> ECY_DOpH_TMDL_070310.pdf	WA Department of Ecology	2007	Ecology found pH and dissolved oxygen (DO) problems in the basin from May through October in the Walla Walla River and several tributaries. Excessive nutrients from point and nonpoint sources, low streamflow, and exposure to the sun cause excessive primary productivity. This report includes recommendations for improvement and load and wasteload allocations to reduce nutrients.	Federal/State/Tribal/Local agency	Walla Walla, Touchet, Mill, Yellowhawk, Garrison, Dry, Mud, Pine, west Little, College Place, Dayton, Waitsburg, wastewater, treatment, plant, TMDL, nitrogen, phosphorus, 303(d)
<a href="#">List of References regarding early Columbia River Basin History</a> ReferenceListing.pdf	N/A	N/A	A list of references regarding early Columbia River Basin history in reference to salmon issues. The list dates back to the 1800s and does not link to the reports listed.	Miscellaneous non-peer reviewed	References, salmon, fisheries, historic, studies, list, Columbia River Basin
<a href="#">United States Commission of Fish and Fisheries, Part 4, Report of the Commissioner for 1875-1876</a> SalmonHistoricalReports.pdf	Marshall McDonald	1878	A report from the US Commission of Fish and Fisheries regarding the salmon fisheries of the Columbia River in the late-1800s. It is an inquiry into the decrease of the food fishes and the propagation of food fishes in the Columbia River at that time.	Federal/State/Tribal/Local agency	federal, salmon, fisheries, Columbia River Basin, declining salmon numbers, map, historic
<a href="#">Walla Walla Basin Integrated Flow Enhancement Study (2017)</a> Walla Walla Basin Flow Study_Final_20171130.pdf	Aspect Consulting	2017	A report that outlines strategies to meet instream flow objectives while preserving existing diversionary requirements.	Consultant reports - Agency reviewed/approved	flow study, Aspect, steering committee, bi-state
<a href="#">Walla Walla River Metering and Flow Telemetry Assessment</a>	Walla Walla		To manage the water resources in the Walla Walla River in real-time gains in metering or surface flow monitoring needs	Miscellaneous non-peer	telemetry, monitoring, Walla Walla



# Consultant team



**Gretchen Muller**

Project Manager

*Cascadia Consulting*

**Susan Gulick**

Lead Facilitator

*Sound Resolutions*

**Caroline Burney**

Assistant Facilitator

*Cascadia Consulting*

**Angela Pietschmann**

Lead Writer

*Cascadia Consulting*

**Amanda Cronin**

Technical Advisor

*AMP Insights*

**Jim Mathieu**

Technical Advisor

*Northwest Land & Water*



# Strategic plan outline

## Executive summary

*Vision for watershed; key takeaways from strategic plan.*

## Introduction

*Purpose; goals and objectives; plan authority and scope; plan development process.*

## Watershed overview

*Local context; history; accomplishments.*

## Current conditions

*Current surface/groundwater supply condition and uses; existing plans, programs, and activities related to water management; current legal and management issues.*

## Desired future conditions

*Forecasted/projected future conditions; uncertainties and assumptions; DFC – instream / out of stream water demands; DFC – land use and cover.*

## Recommended strategies

*Strategies by project type; organizational structure and accountability; performance metrics.*

## Adaptive management

*Adapting to project impacts of climate change, potential economic/social changes, and crop conversion/changing ag demand/land use.*

## Next steps

*Placeholder section - what if we deliver a strategic plan, but there is more work to do?*



# Strategic Plan Advisory Committee (SPAC)

<b>Agriculture</b>	<ul style="list-style-type: none"><li>• Teresa Kilmer (WWRID)</li><li>• Allison Newhouse (OR Irrigation at-large)</li><li>• Annie Byerley (WA Irrigation at-large)</li><li>• Mark Wagonner (GFD No. 13)</li></ul>
<b>Environmental</b>	<ul style="list-style-type: none"><li>• Susan Adams (WWT)</li><li>• Ralph Perkins (WWBWC)</li></ul>
<b>Local Government</b>	<ul style="list-style-type: none"><li>• Mike Talbott (Columbia Co.)</li><li>• Todd Kimball (Walla Walla Co.)</li><li>• John Shafer (Umatilla Co.)</li><li>• Steve Patten (City of Milton-Freewater)</li></ul>
<b>State Government</b>	<ul style="list-style-type: none"><li>• Mark Wachtel (WA DFW)</li><li>• Chris Kowitz (OR WRD)</li></ul>
<b>Tribal Government</b>	<ul style="list-style-type: none"><li>• Chris Marks (CTUIR)</li></ul>
<b>Federal Government</b>	<ul style="list-style-type: none"><li>• Dale Bambrick (NOAA)</li><li>• Cindy Boen (USACE)</li></ul>

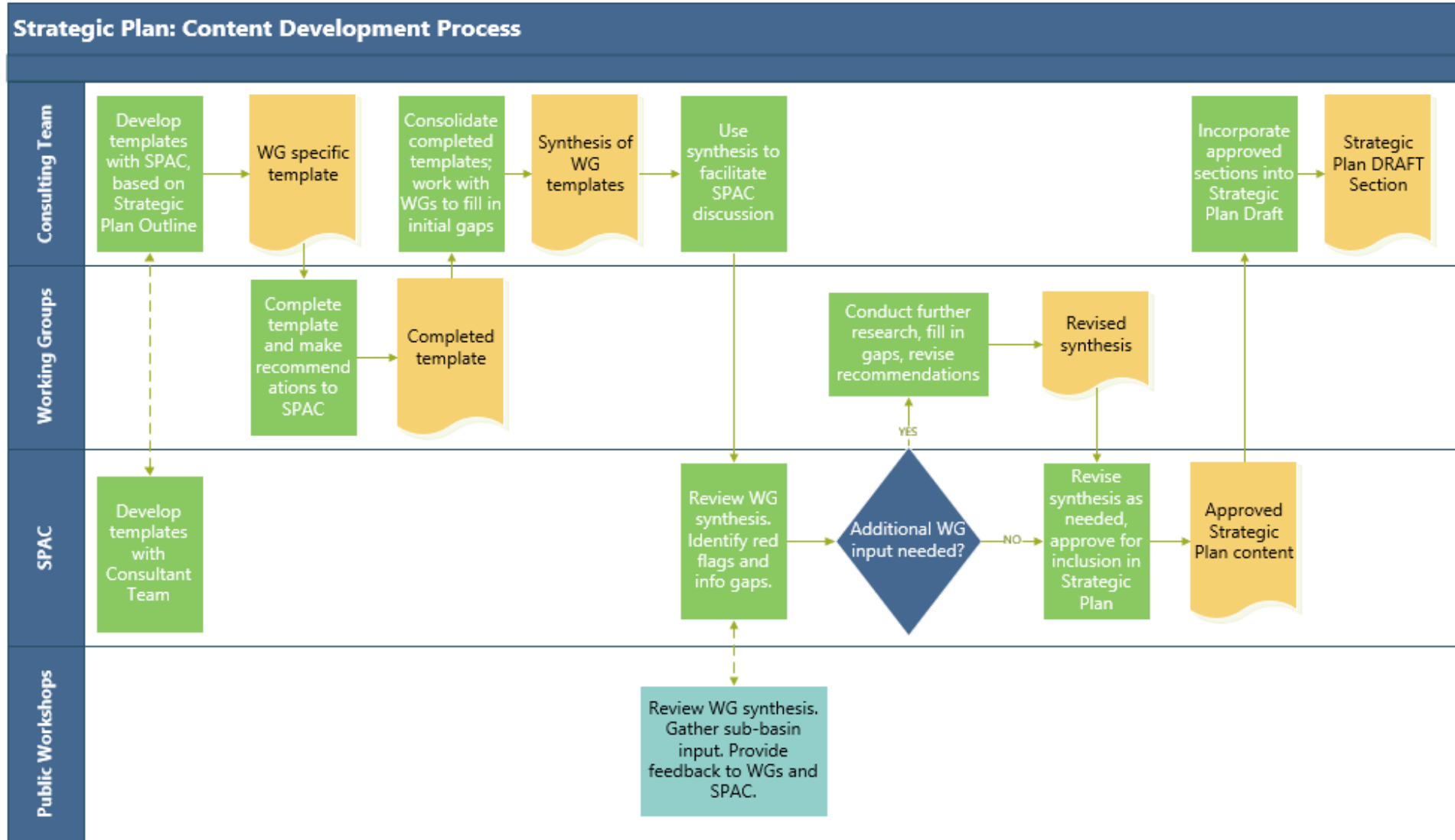


# Working Groups

	Water Supply Needs	Ecological Function	Studies, Monitoring, and Data
Phase 1	<ul style="list-style-type: none"> <li>• Municipal</li> <li>• Rural-domestic</li> <li>• Commercial/Industrial</li> <li>• Agriculture</li> </ul>	<ul style="list-style-type: none"> <li>• Fish and Wildlife</li> <li>• Instream flow</li> <li>• Riparian</li> <li>• Habitat</li> <li>• Water quality</li> <li>• Recreation and quality of life</li> </ul>	<ul style="list-style-type: none"> <li>• Updated water rights evaluation</li> <li>• Bi-state flow study</li> <li>• Touchet River habitat assessment</li> <li>• USGS bi-state groundwater study</li> <li>• Water supply and availability (forecasting)</li> <li>• Surface/groundwater interactions</li> <li>• Infrastructure inventory and gap analysis</li> </ul>
Phase 2	Administrative	Implementation	Land Use
	<ul style="list-style-type: none"> <li>• Regulatory, Mill Creek GI) framework</li> <li>• Financial structure and funding mechanisms</li> <li>• Public engagement</li> <li>• Adjacent processes (Tri-Sovereign talks</li> </ul>	<ul style="list-style-type: none"> <li>• Aquifer storage and recovery (ASR)</li> <li>• Managed aquifer recharge (MAR)</li> <li>• Storage/piping/flood control</li> <li>• Source swap</li> <li>• Floodplain/riparian restoration</li> <li>• Wetland enhancement</li> <li>• Fish passage and screening</li> <li>• Water banking/trust water/mitigation</li> <li>• Conservation</li> <li>• Physical and legal protection of water across the OR-WA border</li> </ul>	<ul style="list-style-type: none"> <li>• Upland management, dryland agriculture, forests</li> <li>• Urban planning and zoning</li> <li>• Rural planning and zoning</li> </ul>



# Strategic plan process





# Immediate next steps

- Continue SPAC meetings
- Continue Phase 1 WG meetings and homework
- Continue gathering public comment and feedback
- Continue to advance studies in the basin
  - Bi-state flow study
  - USGS groundwater study
- Put pen-to-paper and write initial sections of the plan





# Thank you

WA Department of Ecology

And

Walla Walla Watershed Management Partnership

