



# Chehalis Basin Strategy

Presentation to the Columbia River Policy Advisory Group  
By Andrea McNamara Doyle, OCB Director  
June 20, 2019

# Today's Presentation

Overview of Chehalis Basin, OCB, and CBB

Elements of Chehalis Basin Strategy

- Aquatic Species Restoration Plan
- Local Scale Flood Damage Reduction Actions
- Large Scale Flood Damage Reduction Actions

Compare/Contrast OCB & OCR

# The Chehalis Basin

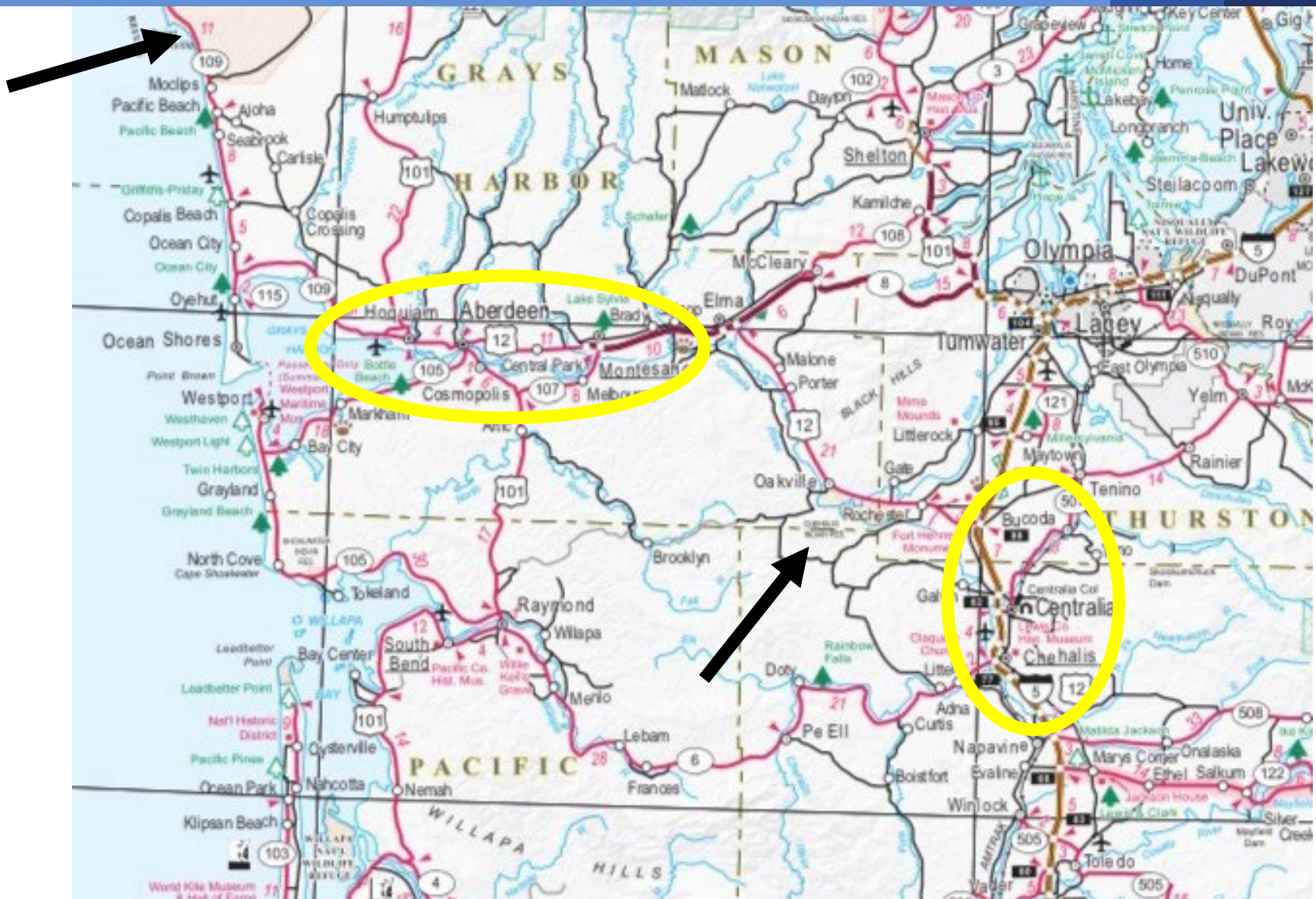
3





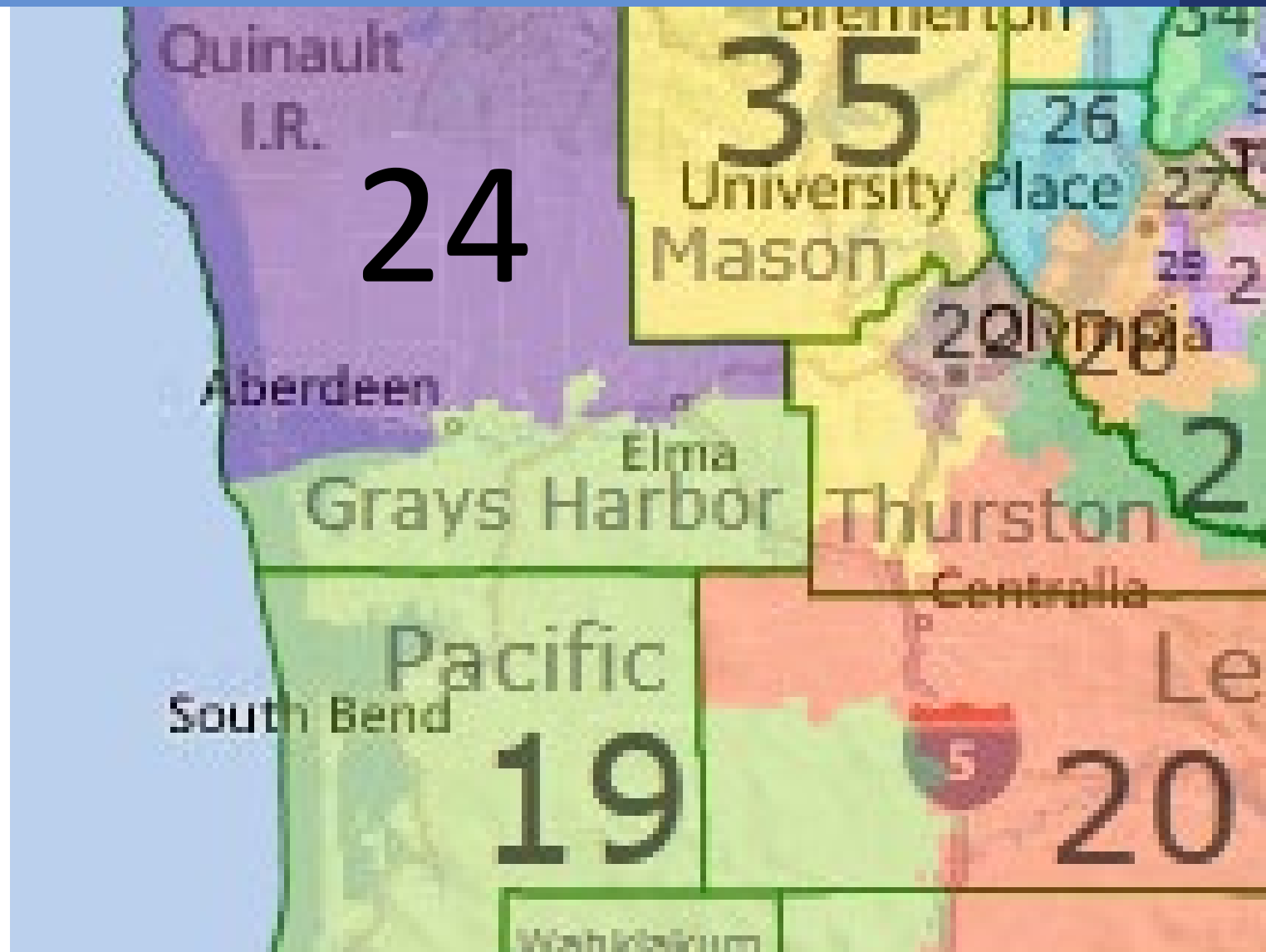
# Another view...

4





## 5



# A Fertile & Bucolic Region ...

6





# ... With Extreme Flooding

7











No Action = \$3.5 - \$4.5B  
projected economic  
damages from future  
flooding

Photos courtesy of : Chronicleonline.com





# An Abundant River Basin...

10





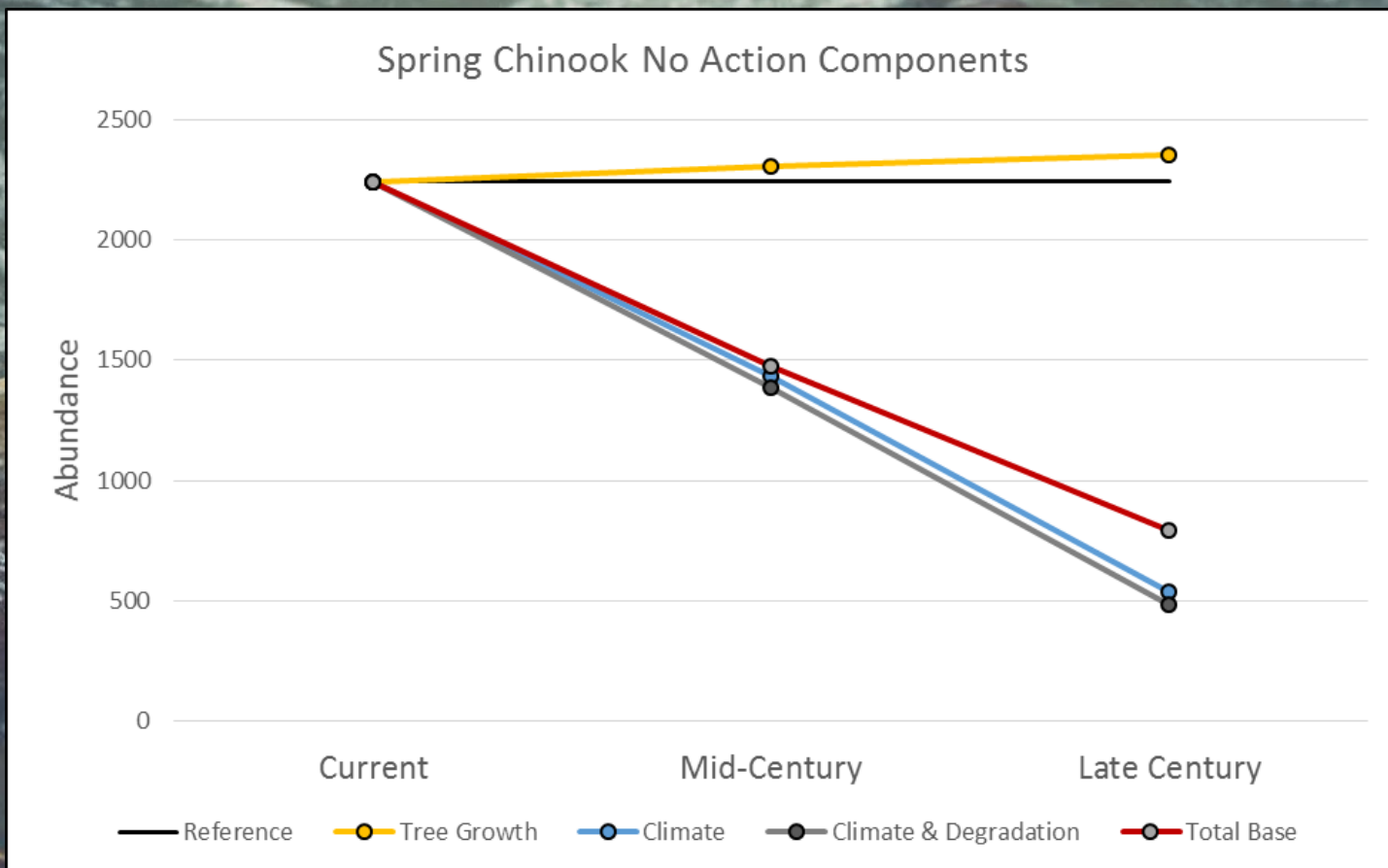
# ...With Struggling Aquatic Species

11



# And a Declining Baseline...

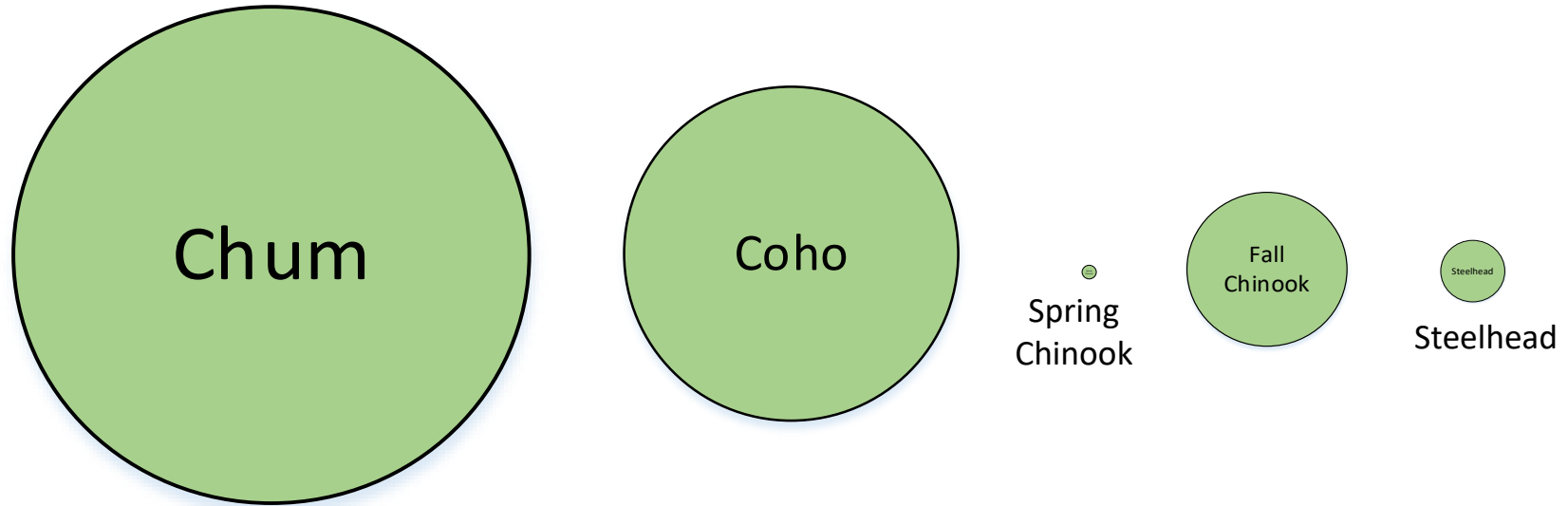
12





# Relative Abundance of Fish Species

13



# OCB'S LEGISLATIVE DIRECTIVE

To aggressively pursue an integrated strategy & funding for:

- long-term flood damage reduction
- aquatic species habitat restoration





# CHEHALIS BASIN STRATEGY

*“...must include a detailed set of actions to reduce flood damage and improve aquatic species habitat.”*

*“...must include an implementation schedule and quantified measures for evaluating the success of implementation.”*

RCW 43.21A.732



# CHEHALIS BASIN BOARD

*“The board is responsible for...developing biennial and supplemental budget recommendations to the governor.”*

RCW 43.21A.731(6)

*“For administrative purposes, the board is located within the department (of Ecology).”*

RCW 43.21A.731(3)



# OCR As Model for OCB

*“In operating the office, the department must follow, to the greatest extent practicable, the model being used to administer the Columbia river basin water supply program...”*

RCW 43.21A.730(3)



# CHEHALIS BASIN BOARD



STATE OF WASHINGTON  
OFFICE OF THE GOVERNOR

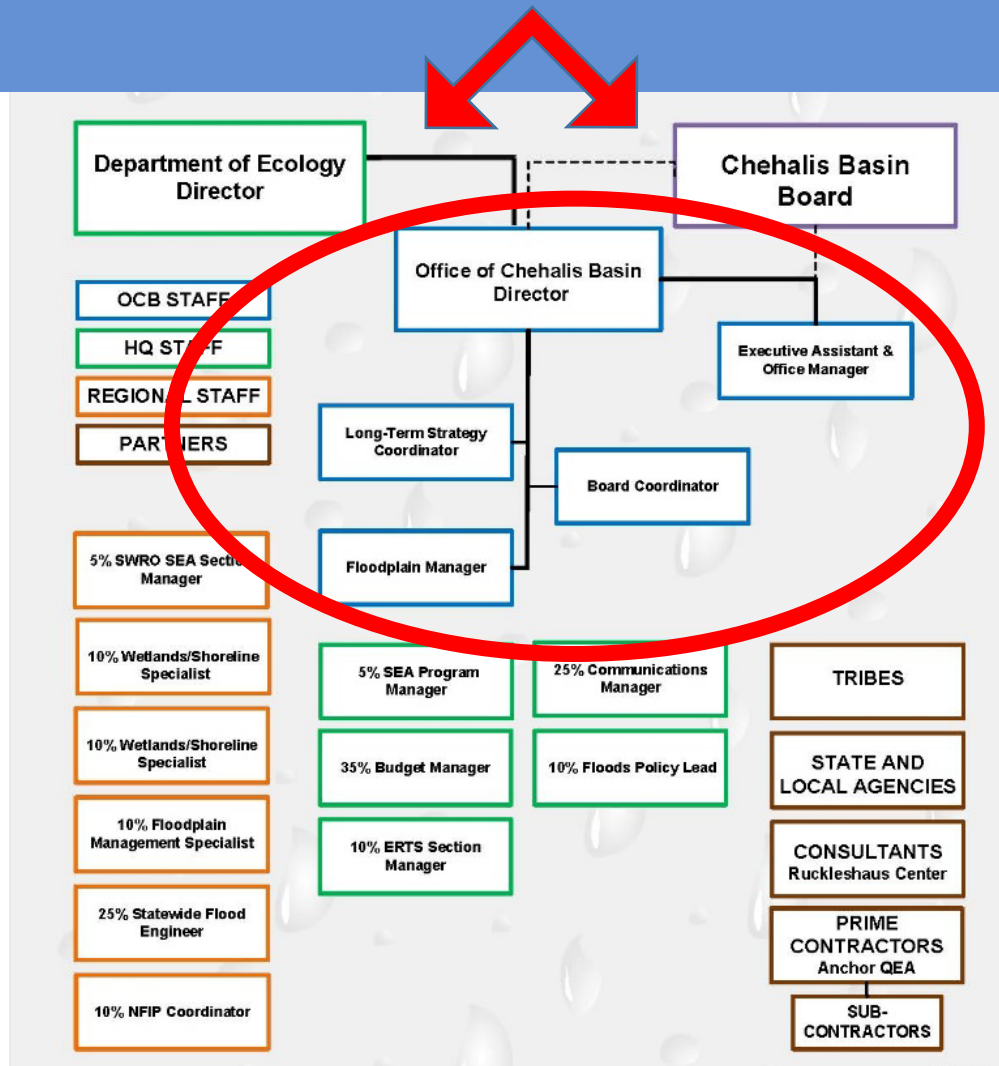




# Chehalis Basin Board Members



# OCB ORG CHART





An aerial photograph of a rural landscape. The foreground and middle ground are dominated by large, vibrant green agricultural fields. A winding river or stream flows through the landscape, particularly on the right side. A small farmstead with several buildings and a road is visible in the lower-left quadrant. The background shows a mix of forested hills and more distant agricultural areas. The image is framed by a green gradient bar at the top and a blue gradient bar at the bottom.

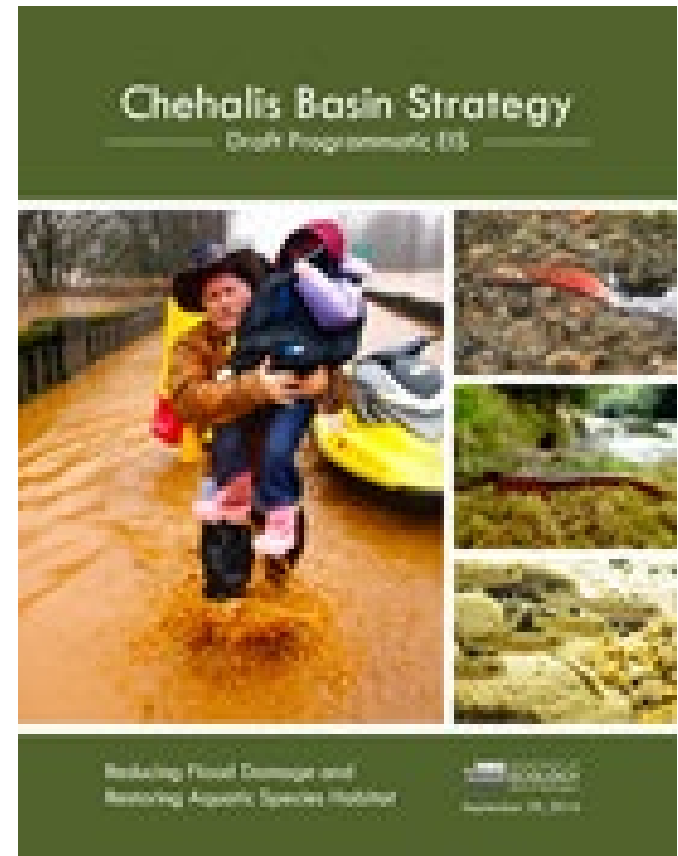
# Elements of Chehalis Basin Strategy

# Programmatic EIS

## ***Completed: Fall 2017***

Evaluated potential alternatives and actions for **basin-wide** flood damage reduction and aquatic species habitat restoration.

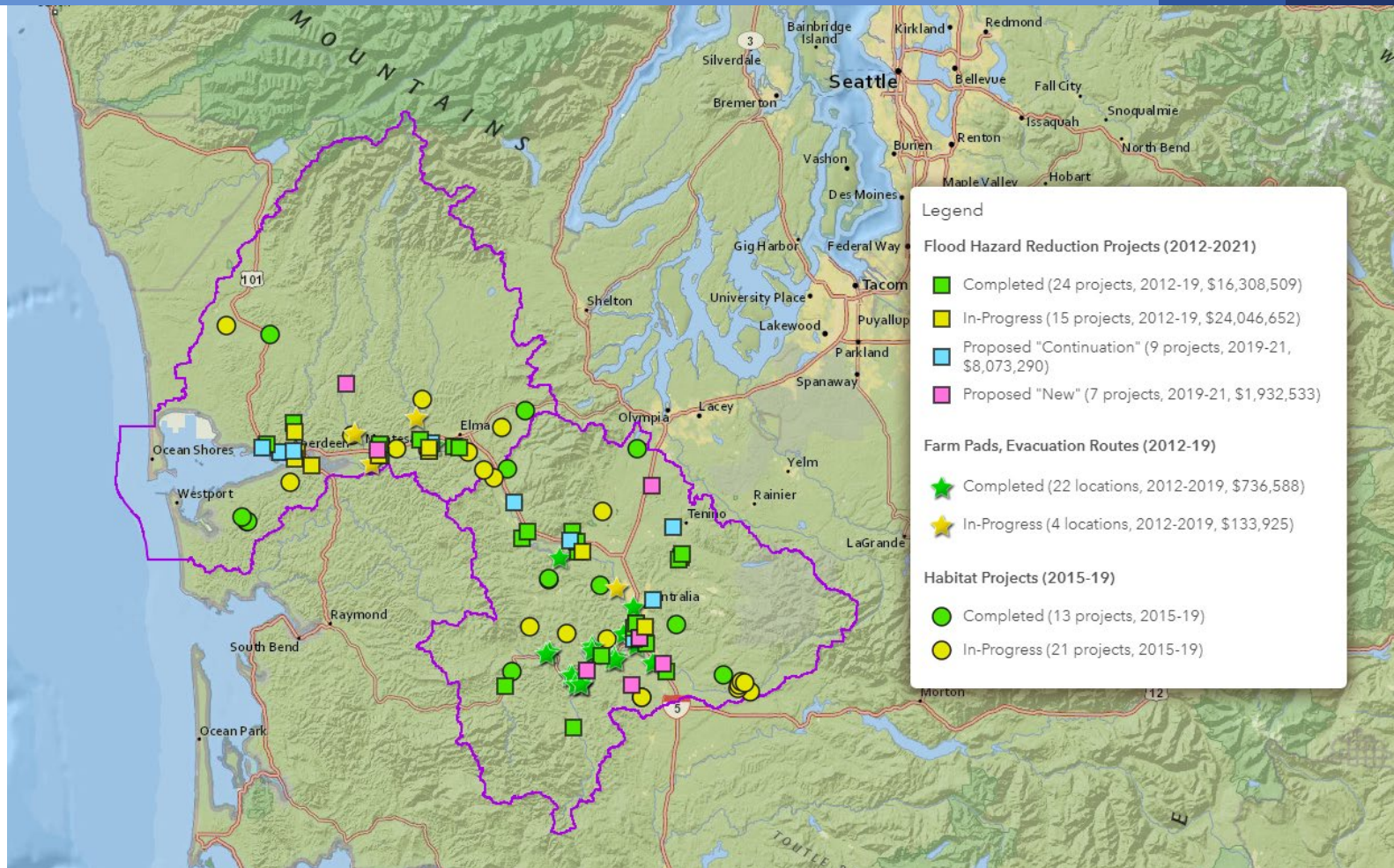
Identified preferred suite of actions





# Accomplishments So Far

23



# Accomplishments So Far

24



35 Fish Barrier Removal Projects



26 Farm Pads



55 Local Flood Damage Reduction Projects



**Chehalis River Basin  
Flood Warning System**

[www.chehalisriverflood.com](http://www.chehalisriverflood.com)



# On the Ground Success to Date

25

- **54** Fish Passage Barriers Addressed

- **35** Fish-Friendly Crossing Constructions
- **19** Fish-Friendly Crossing Designs

- **87** Miles of Fish Habitat Opened

- Designs to open another **17** miles

- \$9.0 Million CBS \$ Invested

- >75 Construction Jobs Created

- Builds on 18 Years of Restoration Efforts

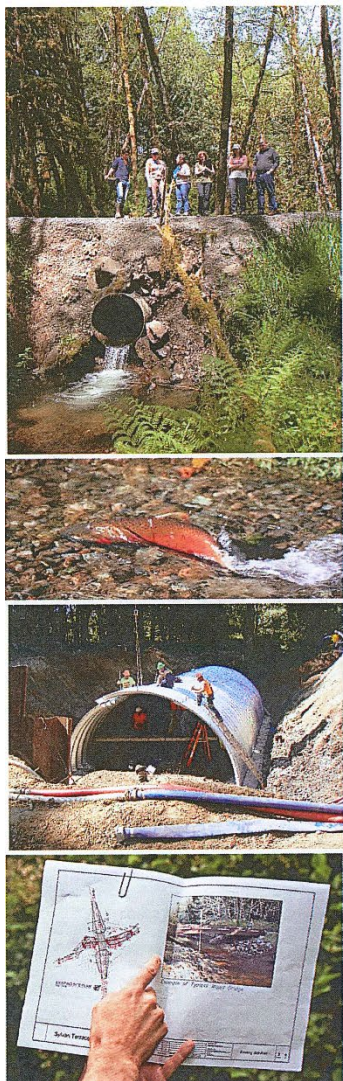
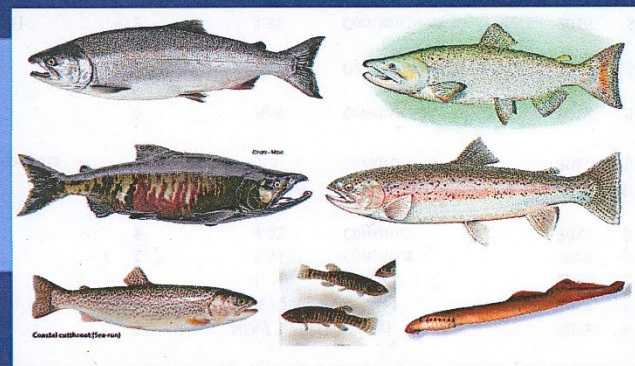
- Leverages Other Funding Sources

- **30** Miles of Habitat Surveyed

- **6** Miles of Riparian Knotweed Removed; **4** Miles Replanted

- **1** Channel Reconnected; **21.5 acres** Off-Channel Reconnection Design

Chehalis Strategy –  
Aquatic Species  
Restoration Projects  
(2015-2019)



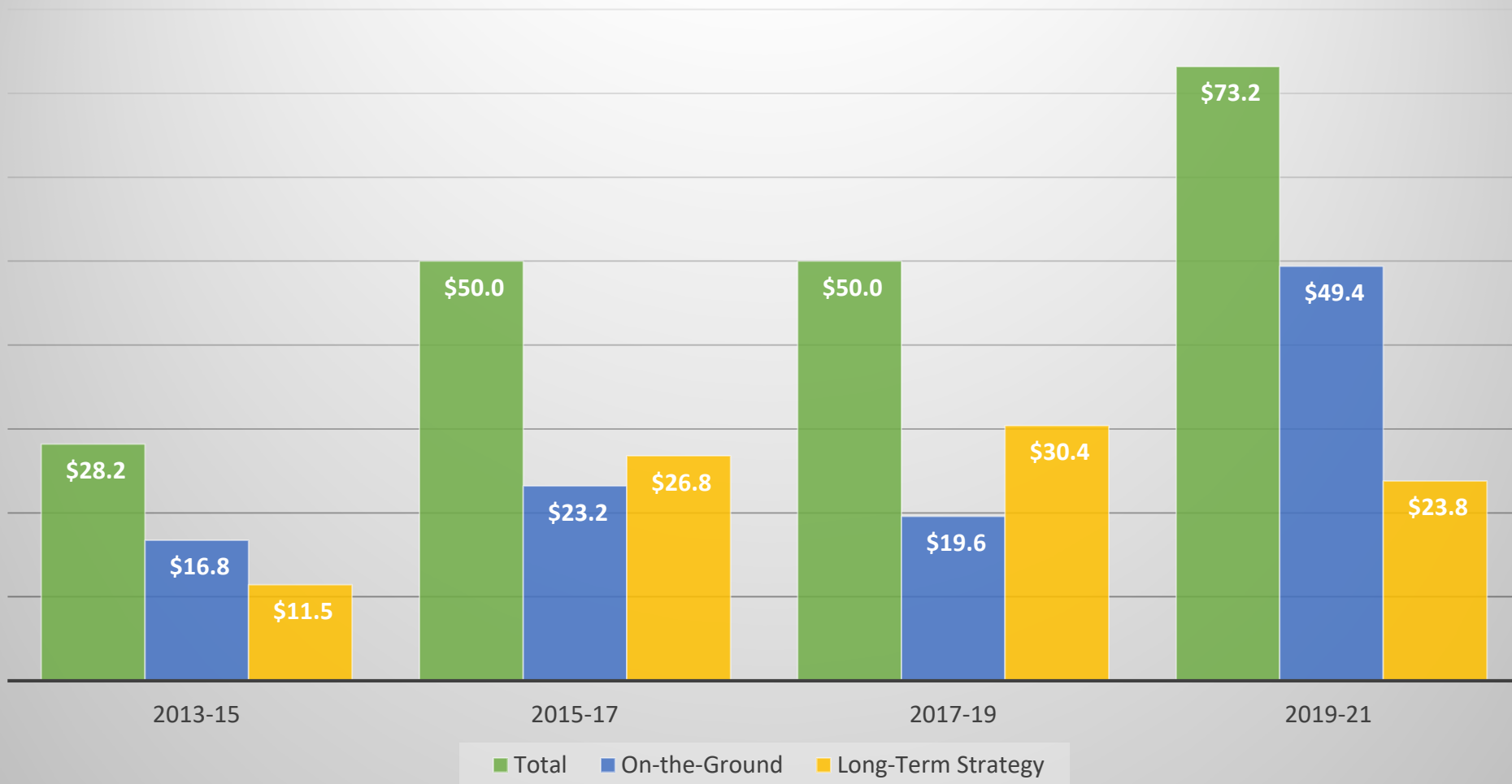


# CBS Capital Budgets Over Time

26

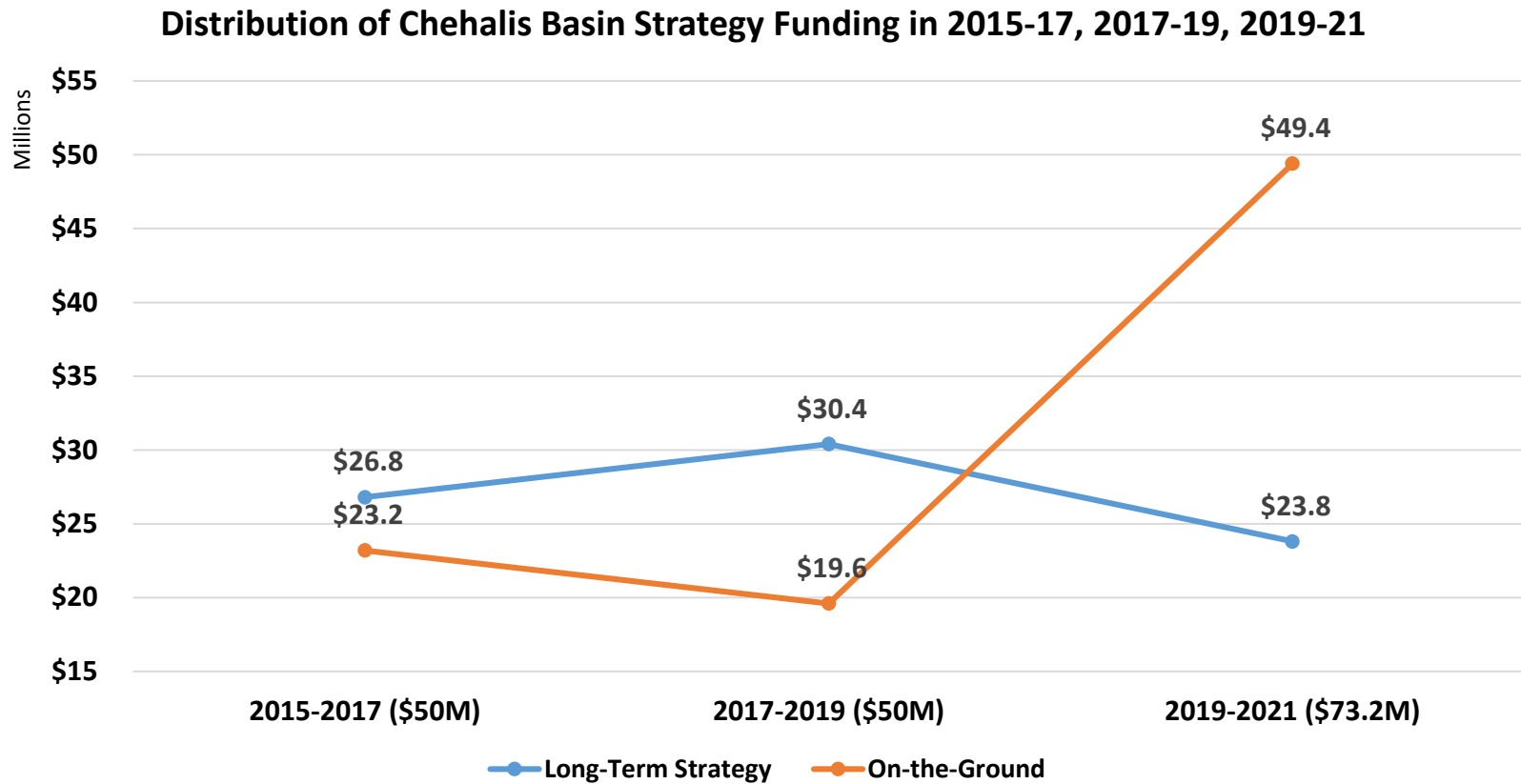
## Chehalis Basin Strategy Capital Budgets

In millions



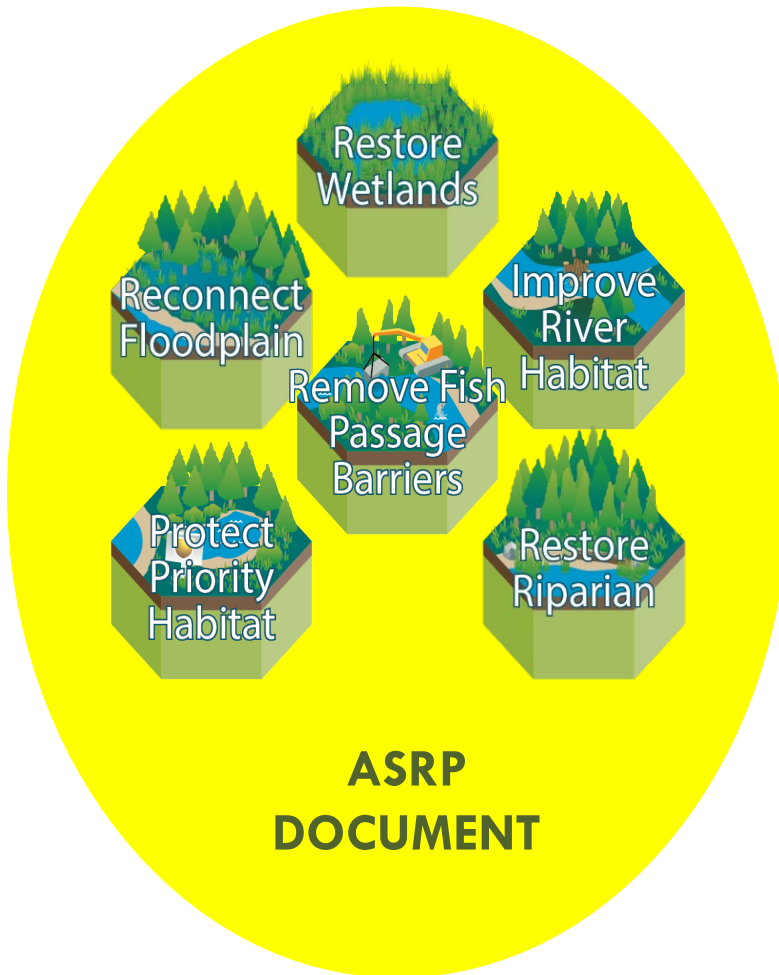


# Comparison of CBS Funding Distributions



# Aquatic Species Restoration Plan

28



- Initial ASRP draft released late 2017
- Early actions reach restoration projects now underway
- Long-term restoration scenarios under development
- Phase 1 ASRP available for public comment Summer 2019



# ASRP Vision

To provide for a future where the Chehalis Basin can support:

- Healthy and harvestable salmon populations,
- Robust and diverse populations of native aquatic and semi-aquatic species, and
- Productive, self-sustaining ecosystems that are resilient to climate change and anthropogenic stressors,

While also honoring the social, economic, and cultural values of the region.



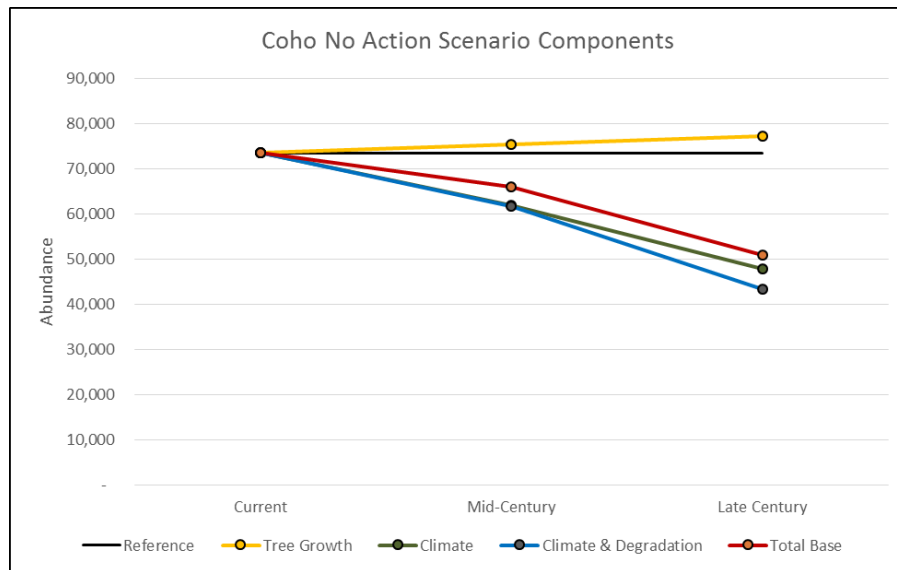
Large wood on the Humptulips



Upper East Fork Satsop wetland complex

# New Models Confirm Declining Baseline

30



- No action = marked decline in abundance by Late Century
  - -30% Coho
  - -70% Spring Chinook
- Greatest decline due to climate change & temperature

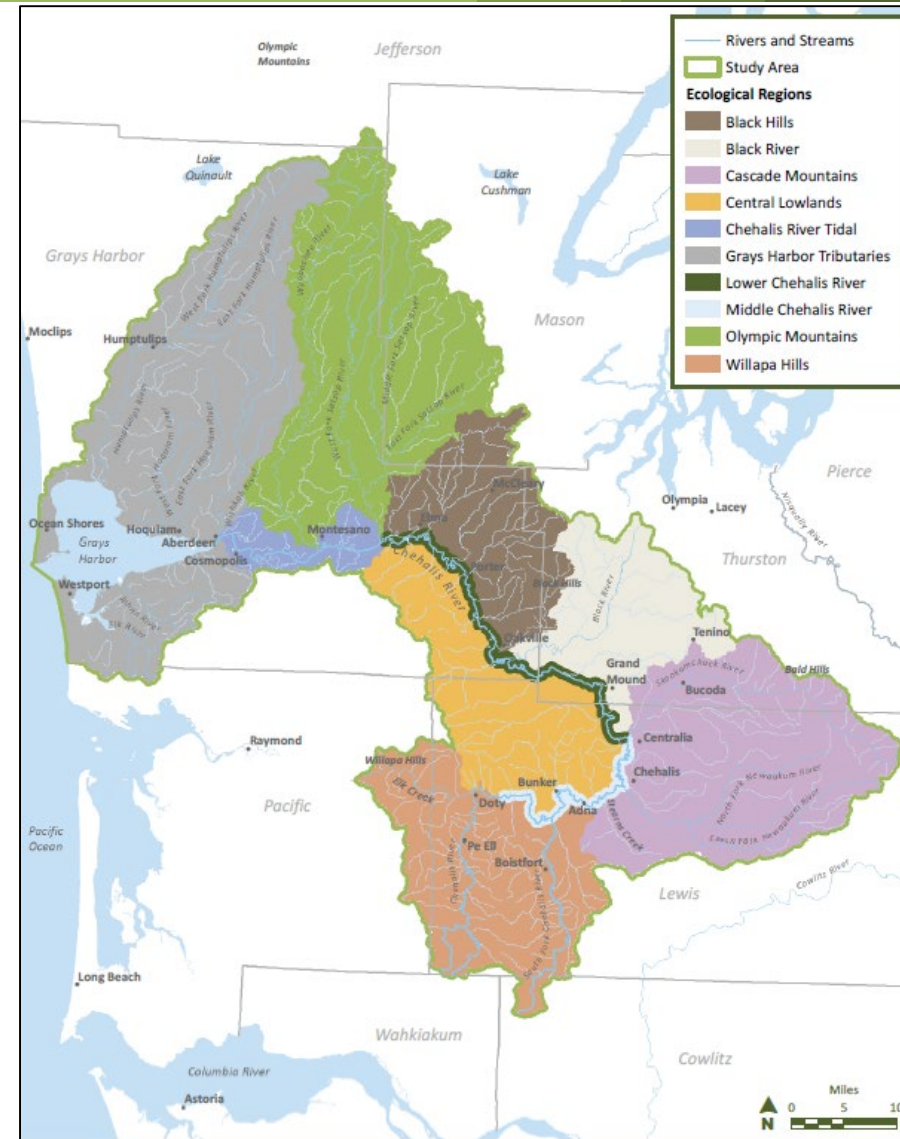


# ASRP Spatial Scale

31

Basin is divided into 10 ecological diversity regions.

- Distinct ecological characteristics
- Unique geologic features



# ASRP Major Strategies

32

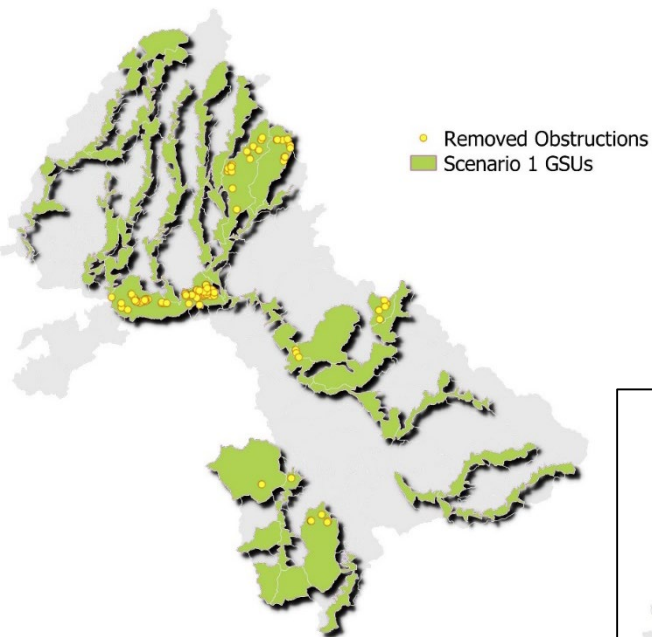
- Restoration
- Protection
- Institutional Capacity
- Community Planning & Involvement





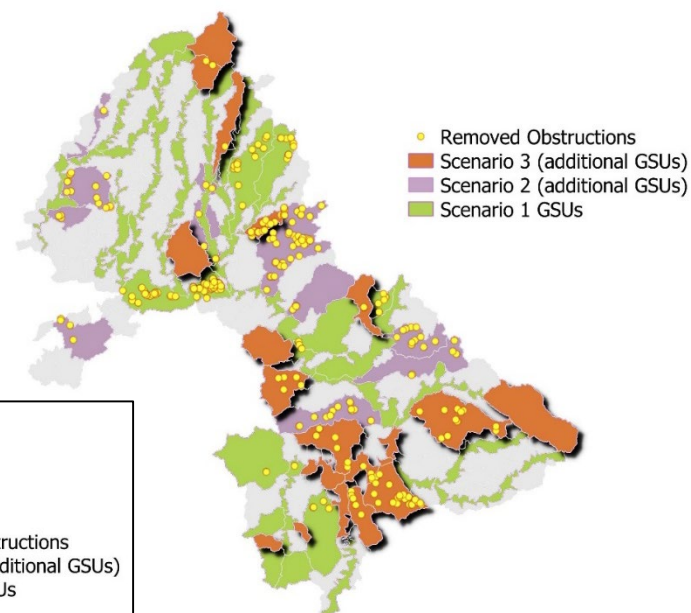
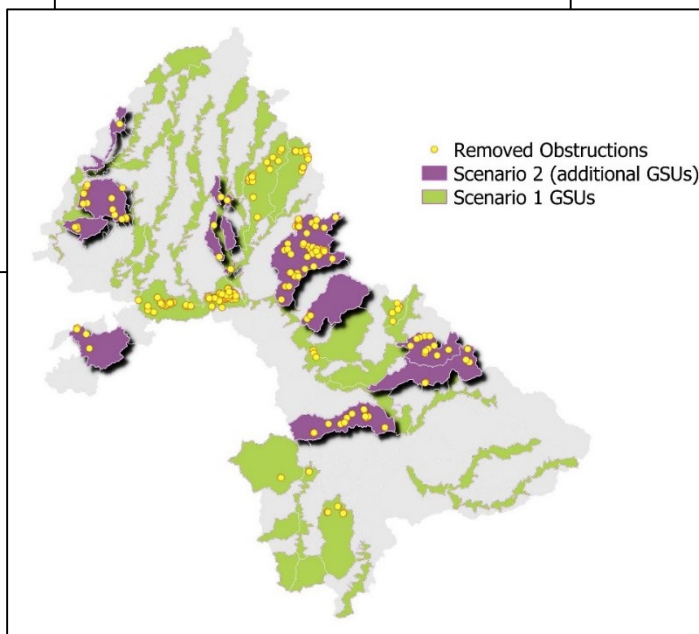
# ASRP Scenarios

33



Scenario 1: Protect and Restore Core Habitats

Scenario 2: Protect and Expand Restoration



Scenario 3: Protect Core Habitats Restore Spatial Diversity

Colored polygons = Geographic areas where treatment was applied; dots = Culverts removed

# Scenario 1

## Protect and Enhance Core Habitats

34



### Scale of Restoration

**220 river miles** of restoration  
**9,590 acres** riparian/floodplain  
    1,900 on large rivers  
    2,100 across mainstem nodes  
    5,560 on medium rivers  
    18 on small streams  
**112 culvert/barriers** corrected  
**61 river miles** opened

**Est. Average Cost: \$442 m**



# Scenario 2, Protect Core Habitats and Restore Key Opportunities

35



## Added Restoration

315 river miles of restoration  
+ **95 miles**

10,900 acres riparian/floodplain  
+ **700** on medium rivers  
+ **567** on small streams

233 culvert/barriers corrected  
+ **121** culverts

157 river miles opened  
+ **96 miles**

**Est. Average Cost: \$541 m**

# Scenario 3a, Protect Core Habitats and Expand Distribution

36



## Added Restoration

430 river miles of restoration  
**+ 115 miles**

15,000 acres riparian/floodplain  
**+ 4,100** on all size streams

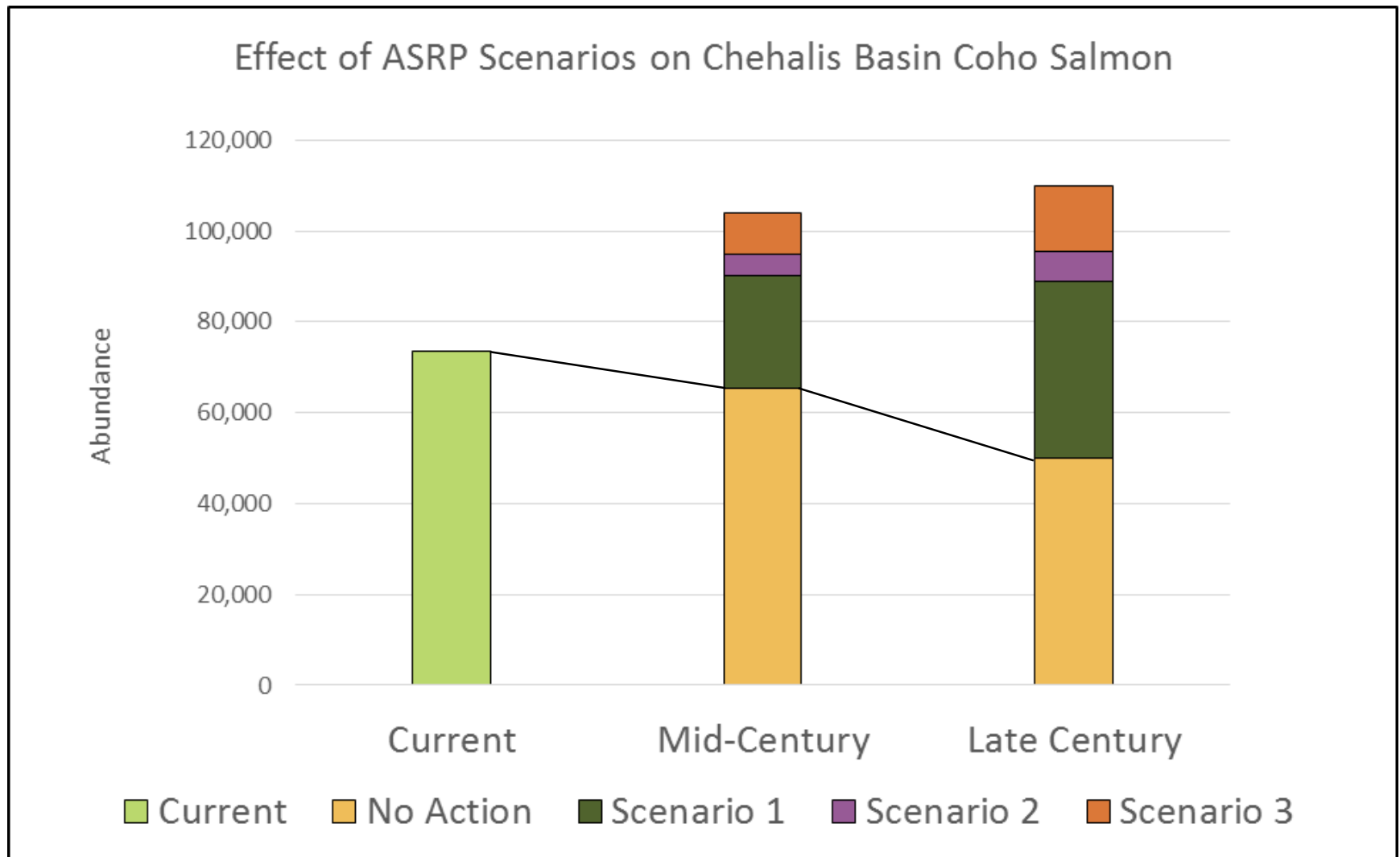
313 culvert/barriers corrected  
**+ 80 culverts**

254 river miles opened  
**+ 150 miles**

**Est. Average Cost: \$892 m**

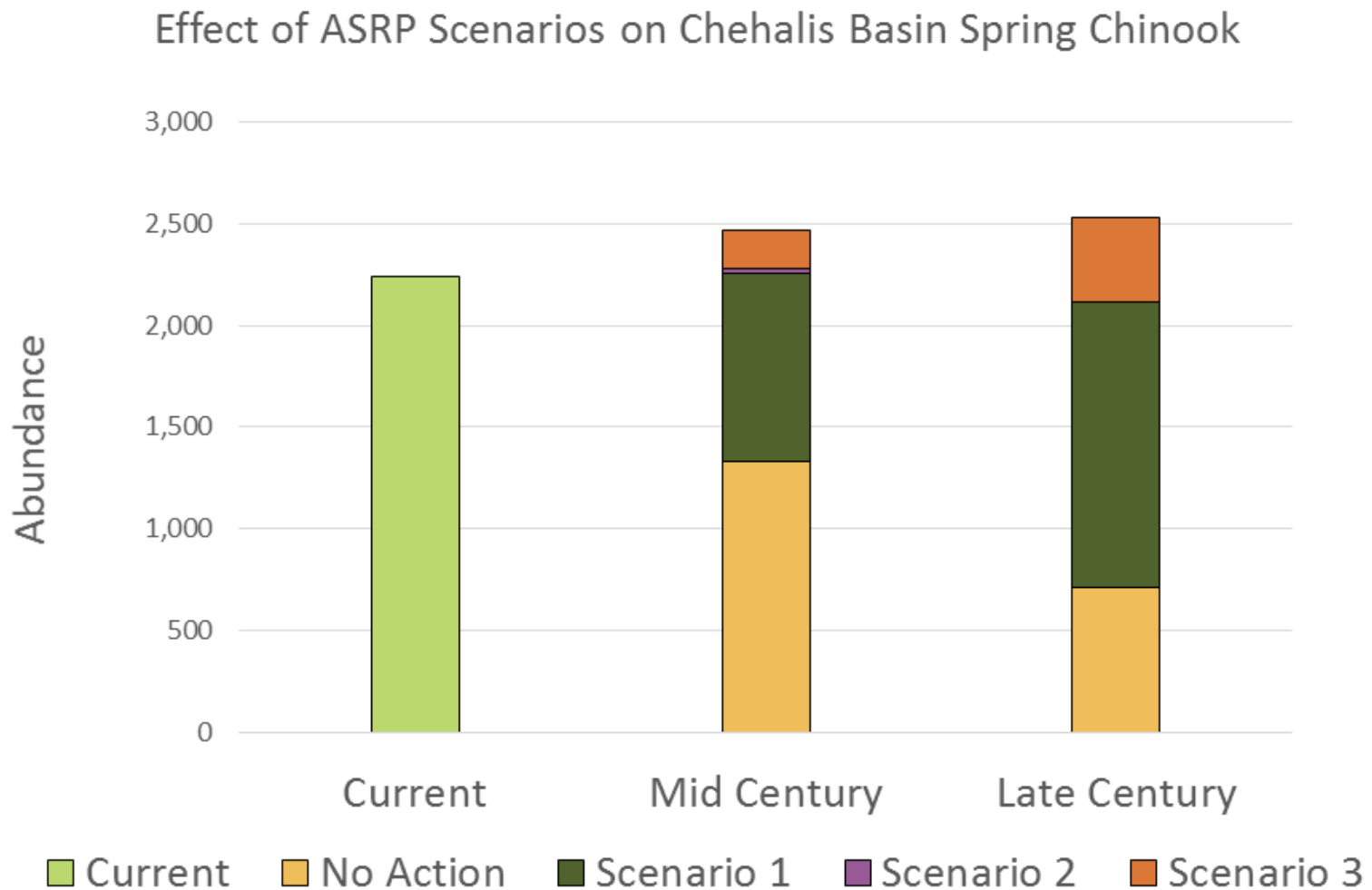


# ASRP Scenario Effects (coho)



# ASRP Scenario Effects (spring Chinook)

38





# ASRP Take-Away Messages

39

We face a **declining baseline**. The hole will only get deeper, and prospects for success less certain, unless actions are taken sooner than later.

ASRP focuses on improving habitat **capacity**.

We have **confidence** in the **actions** to take and **locations** to take them in the basin's freshwater environment.

It will take **significant investment** over the next couple decades to make the difference that is needed.

# North Shore Levee



**Aberdeen-  
Hoquiam North  
Shore Levee**

- Early project phases funded through Flood Authority local projects
- Currently undergoing environmental review/permitting
- \$10M State Capital Budget proviso for NSL in 2019-2021

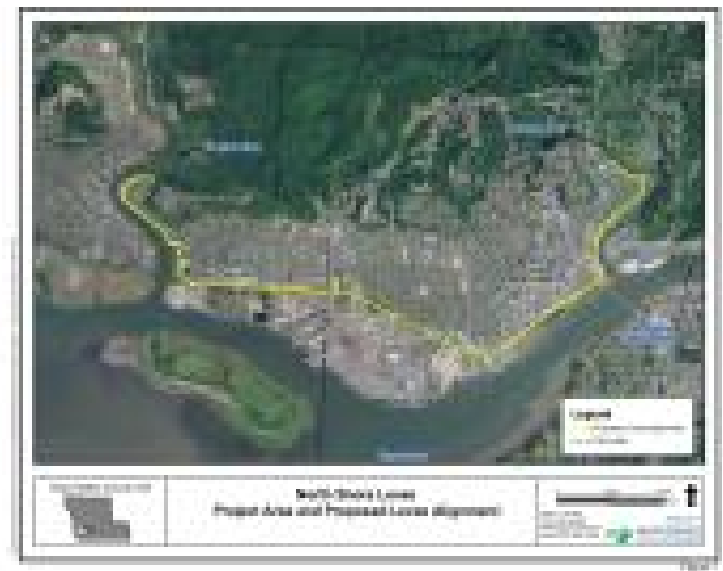


# North Shore Levee

41

## Project objectives:

- Protect 3,500+ homes & properties assessed at over \$480m from 100-year coastal flood event
- Remove them from regulatory floodplain, eliminating currently mandated Federal flood insurance requirements on mortgages



# Project-Level SEPA/NEPA EISs



**Project-level  
SEPA/NEPA EISs**

## ***EISs will:***

Evaluate environmental impacts of FCZD's Project to reduce flood damage in Chehalis & Centralia from storm events originating in the Willapa Hills.

Currently undergoing environmental review through SEPA and NEPA.

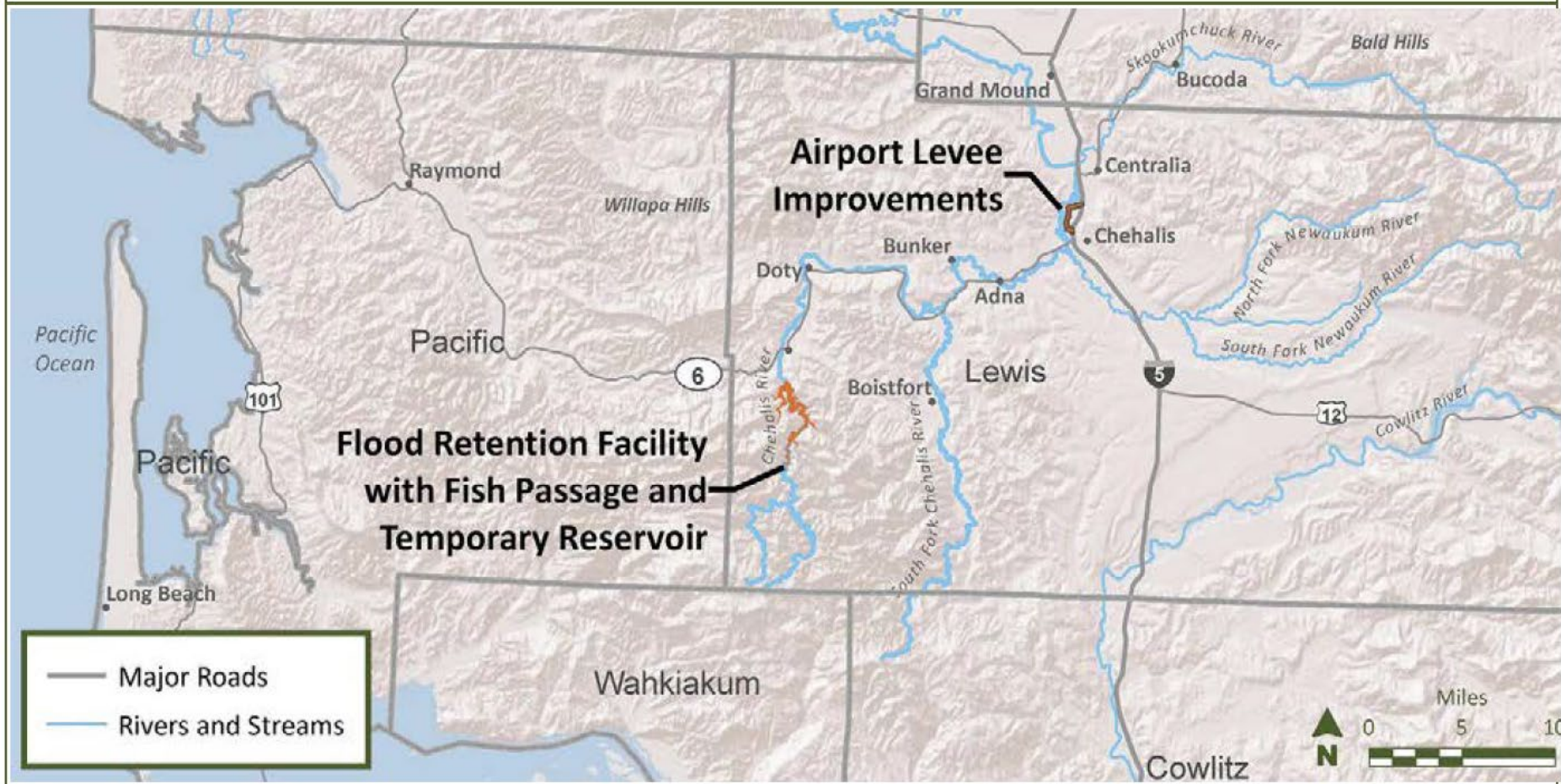
Draft EISs expected in 2020

# Flood Control Zone District Project

43

**Figure 1**

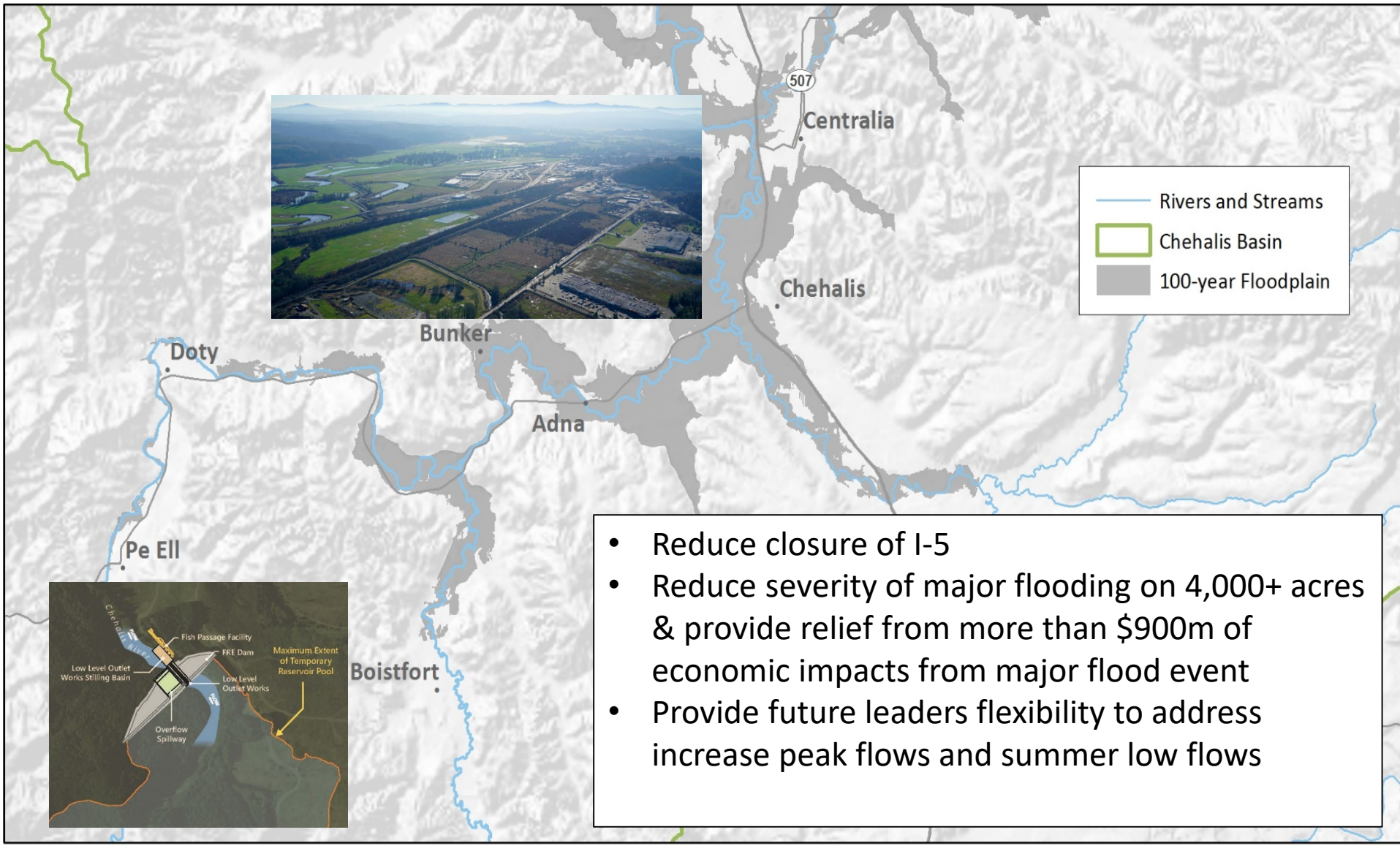
**Chehalis River Basin Flood Damage Reduction Project**





# FCZD Project Objectives

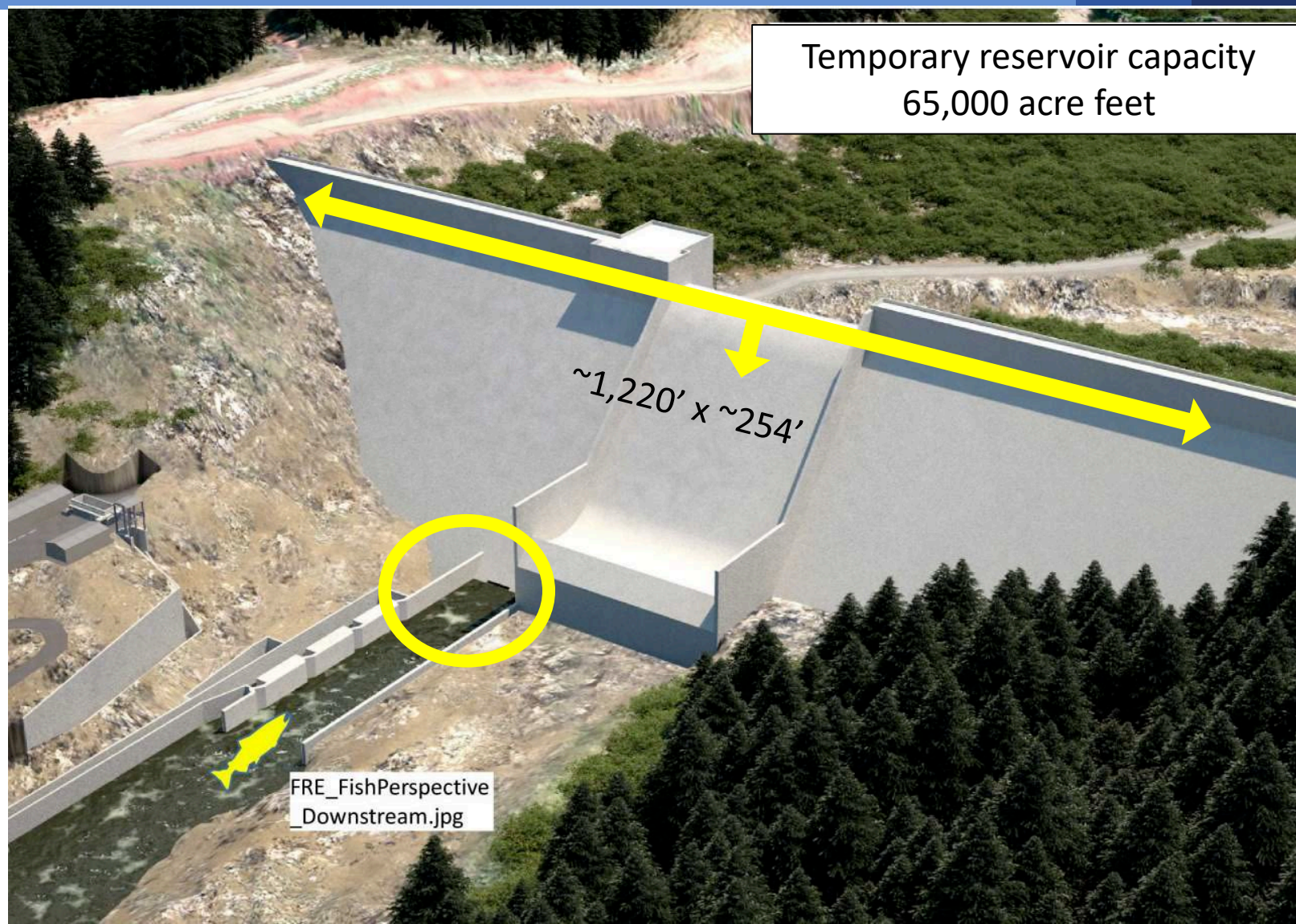
44





# FRE Rendering

45



# Fish Passage

46

River Level View Downstream of Dam -  
Looking Upstream



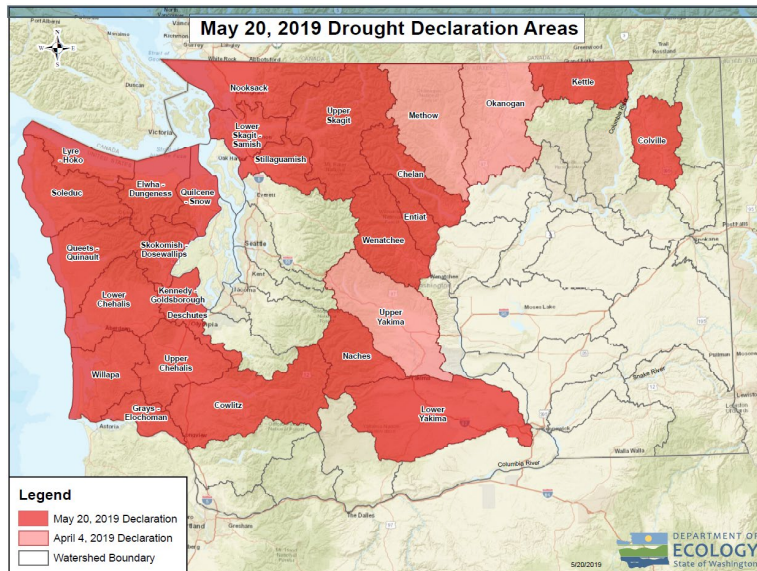




# Compare/Contrast OCB & OCR

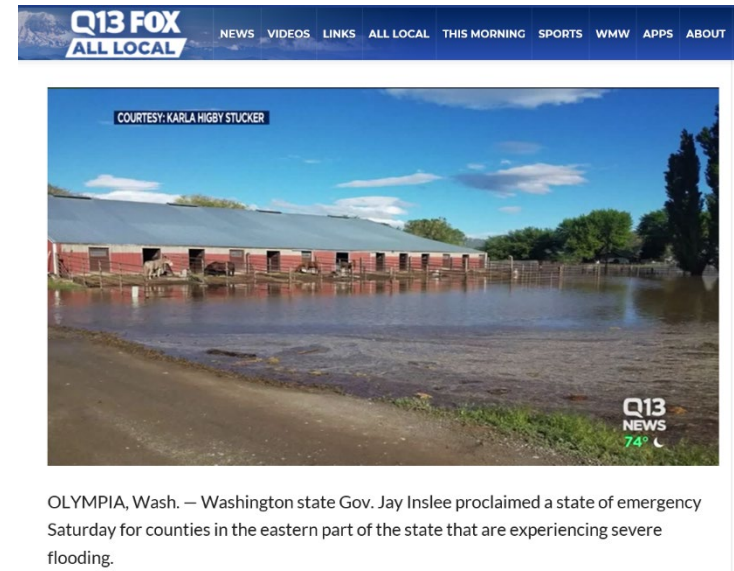
# Compare/Contrast OCB & OCR

## “Fish & Flood”



*... plus drought*

## “Fish & Water Supply”



*...plus flood*

# Compare/Contrast OCB & OCR

- Governance Structure/Authorizing Environment
- Tribal Engagement
- Federal Engagement
- Agriculture Sector Engagement
- Consensus decision-making
- History of issues & conflicts
- Scale & Size of Projects
- Legislative Champions



# Questions?

**Andrea McNamara Doyle, OCB Director**

**[Andrea.Doyle@ecy.wa.gov](mailto:Andrea.Doyle@ecy.wa.gov)**

**360.407.6548**

**[Chehalisbasinstrategy.com](http://Chehalisbasinstrategy.com)**