

Lower Wenatchee Instream Flow Enhancement Phase II

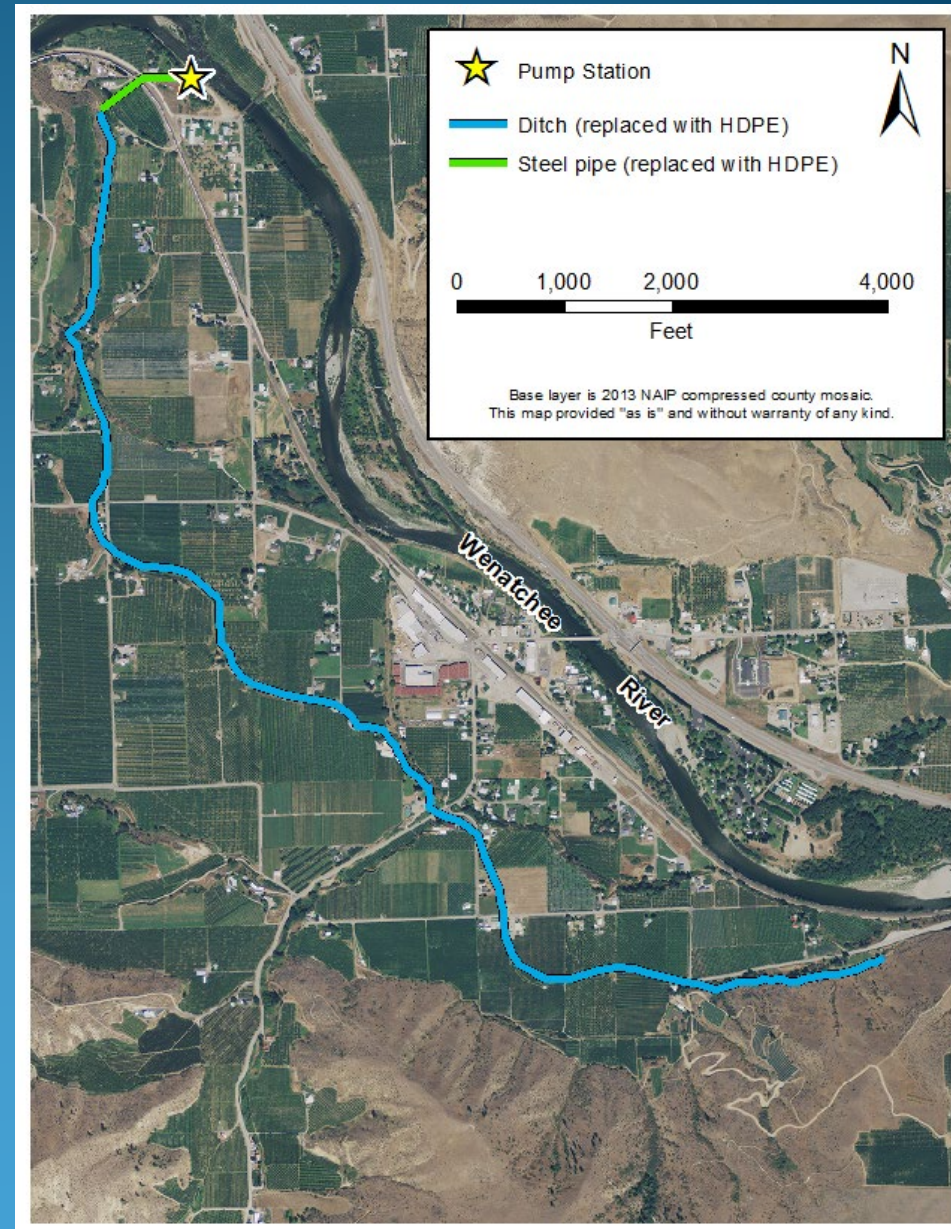
Trout Unlimited-Washington Water Project



Lower Wenatchee Instream Flow Enhancement Phase II

Jones Shotwell Ditch Company Irrigation Improvements

- Project Located in Monitor WA, RM 7.5 on the LWR
- Replace 2.5 miles of open, mostly unlined ditch with HPDE pipe
- Install new pump station creating demand-based system (VFD & PLC controlled system)
- 15 CFS and 2000 Acre-ft for irrigation of ~370 acres
- One of the most senior rights and largest purveyors on the LWR



Lower Wenatchee Instream Flow Enhancement Phase II

Jones Shotwell Ditch Company Irrigation Improvements

- Transfer up to 7.03 CFS & 610 ac-ft of conserved water to trust for instream flows
- Higher realized instream flow benefit (on-demand system)
- Eliminate direct transport pathway for agricultural fertilizers, chemicals, etc.
- Improve energy use efficiency for JSDC and shareholders
- Builds on long-standing regional effort to increase instream flows in the LWR



Lower Wenatchee Instream Flow Enhancement Phase II

Jones Shotwell Ditch Company Irrigation Improvements

- Project previously ready for construction in 2015
- Implementation now planned Fall 2024 – Spring 2025
- Permitting & Design completed, planning review & updates
- Securing remaining funding needed & gearing up for construction
- Partners: JSDC, WDFW, Ecology, WA Conservation Commission, Cascadia CD, funders



QUESTIONS

