



Columbia Land Trust

CONSERVING THE NATURE YOU LOVE

East Fork Lewis River Land Conservation Partners

Columbia Land Trust and Clark Co Legacy Lands

Alice Williamson, Columbia Land Trust Conservation Lead

Patrick Lee, Clark County Legacy Land Program Manager

August 8, 2018



Columbia Land Trust Mission:

Conserve and care for the vital lands, waters, and wildlife of the Columbia River region through sound science and strong relationships.



Service Area

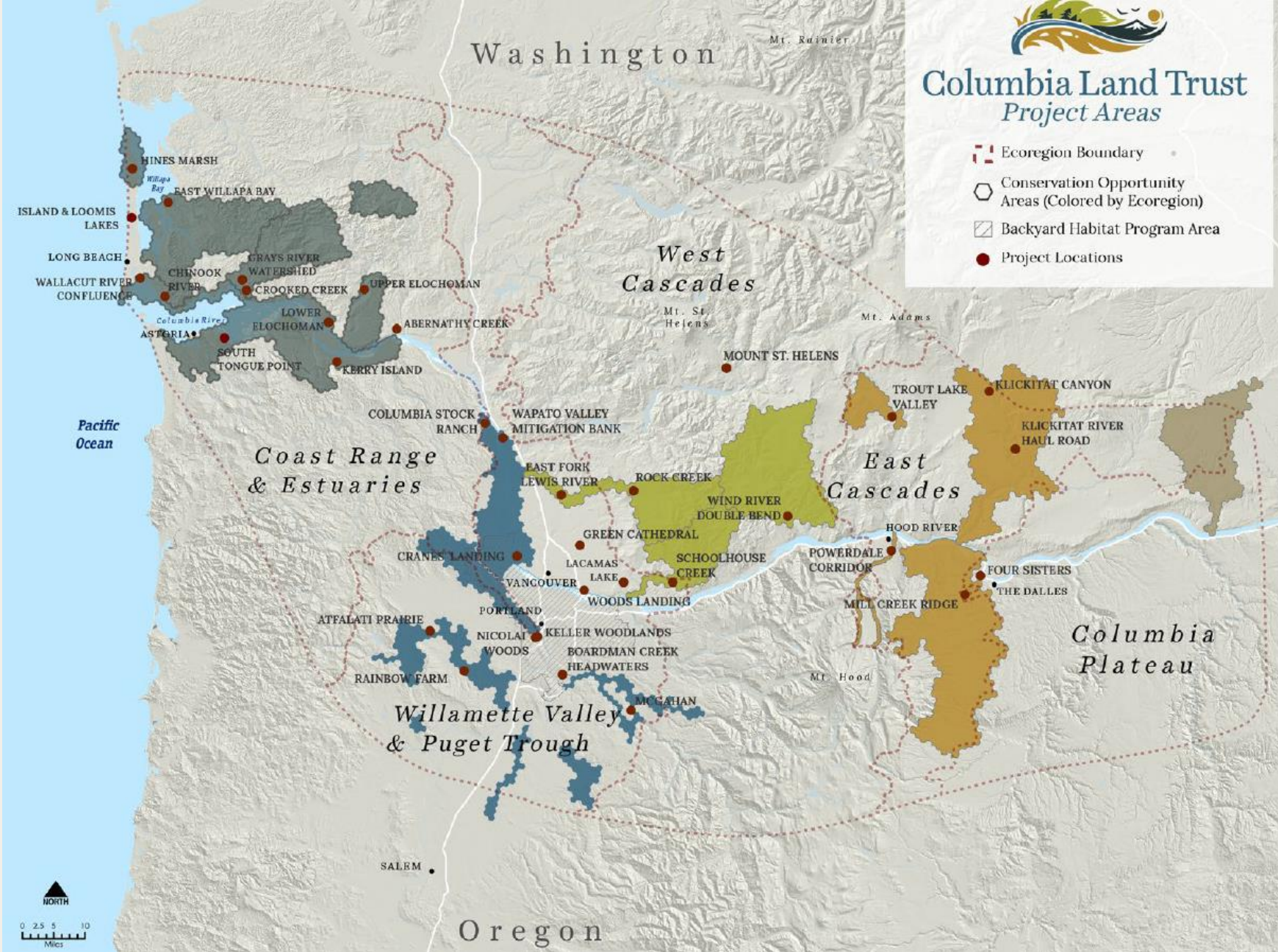
John Day River to Pacific Ocean,
50 miles on either side of the
Columbia River into Washington
and Oregon

Founded in 1990

Conserved 43,000 acres

Approaches:

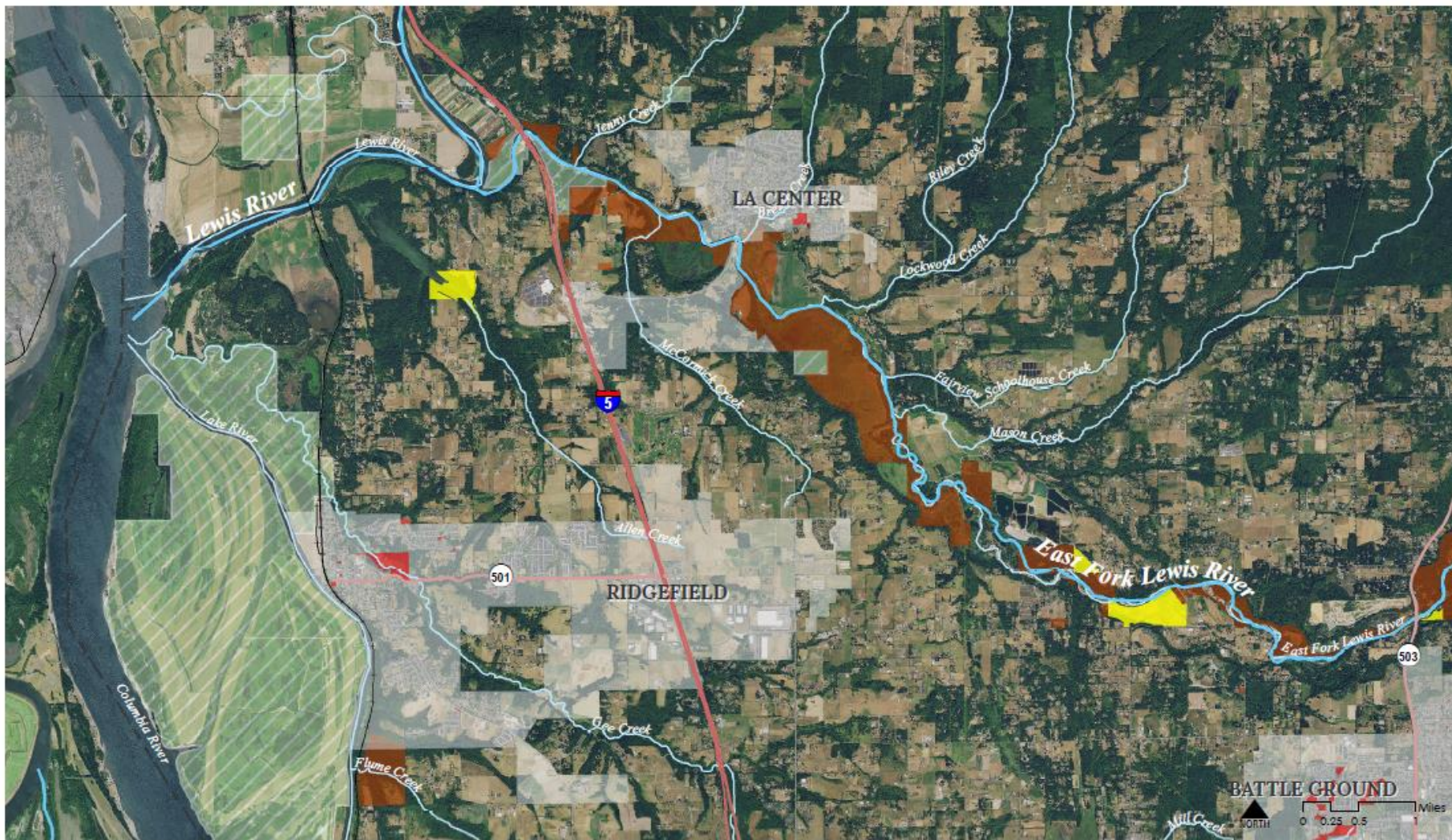
- Purchase land
- Purchase conservation easements
- Accept donations of land and easements
- Support partners in conservation



Working together....

- Clark Co owns and manages roughly 2000 acres in the East Fork Lewis River watershed
- Land Trust owns and manages just over 300 acres
- Partnership Agreement supports joint efforts
- Shared priorities, leveraged fundraising
- Identify high value conservation projects
- Identify funding and partnership strategies





EAST FORK LEWIS RIVER - CONSERVATION CORRIDOR

7/30/2018

LAND

- Federal & State Government
- Clark County
- City (Battle Ground, La Center, Ridgefield, Vancouver, Yacolt)
- Columbia Land Trust

ADMINISTRATIVE

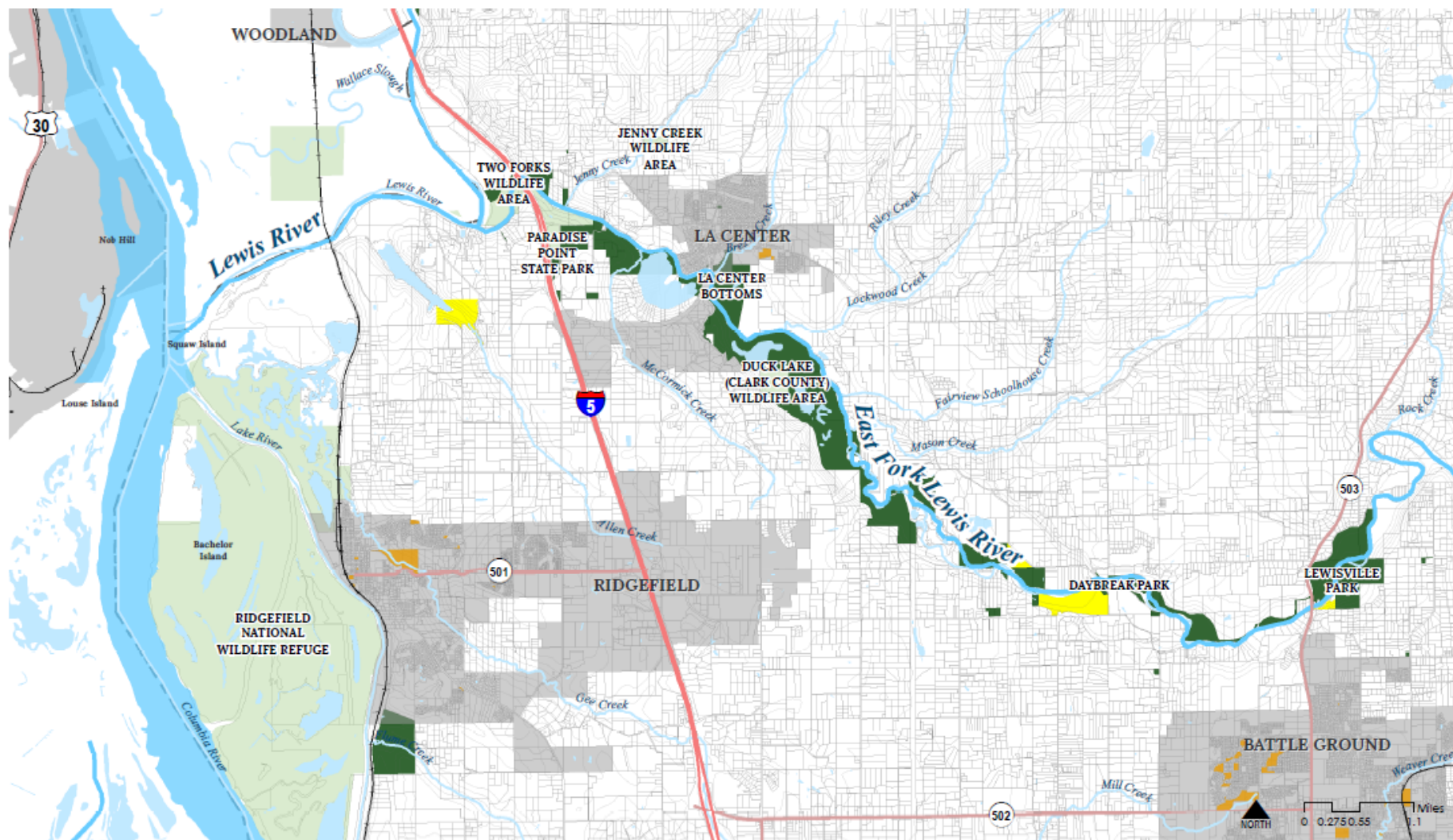
- City Boundaries
- County

TRANSPORTATION &

- Interstates
- Highways
- Major Rivers



COL



EAST FORK LEWIS RIVER - CONSERVATION CORRIDOR

7/30/2018

LAND

- Federal & State Government
- Clark County
- City (Battle Ground, La Center, Ridgefield, Vancouver, Yacolt)
- Columbia Land Trust

ADMINISTRATIVE

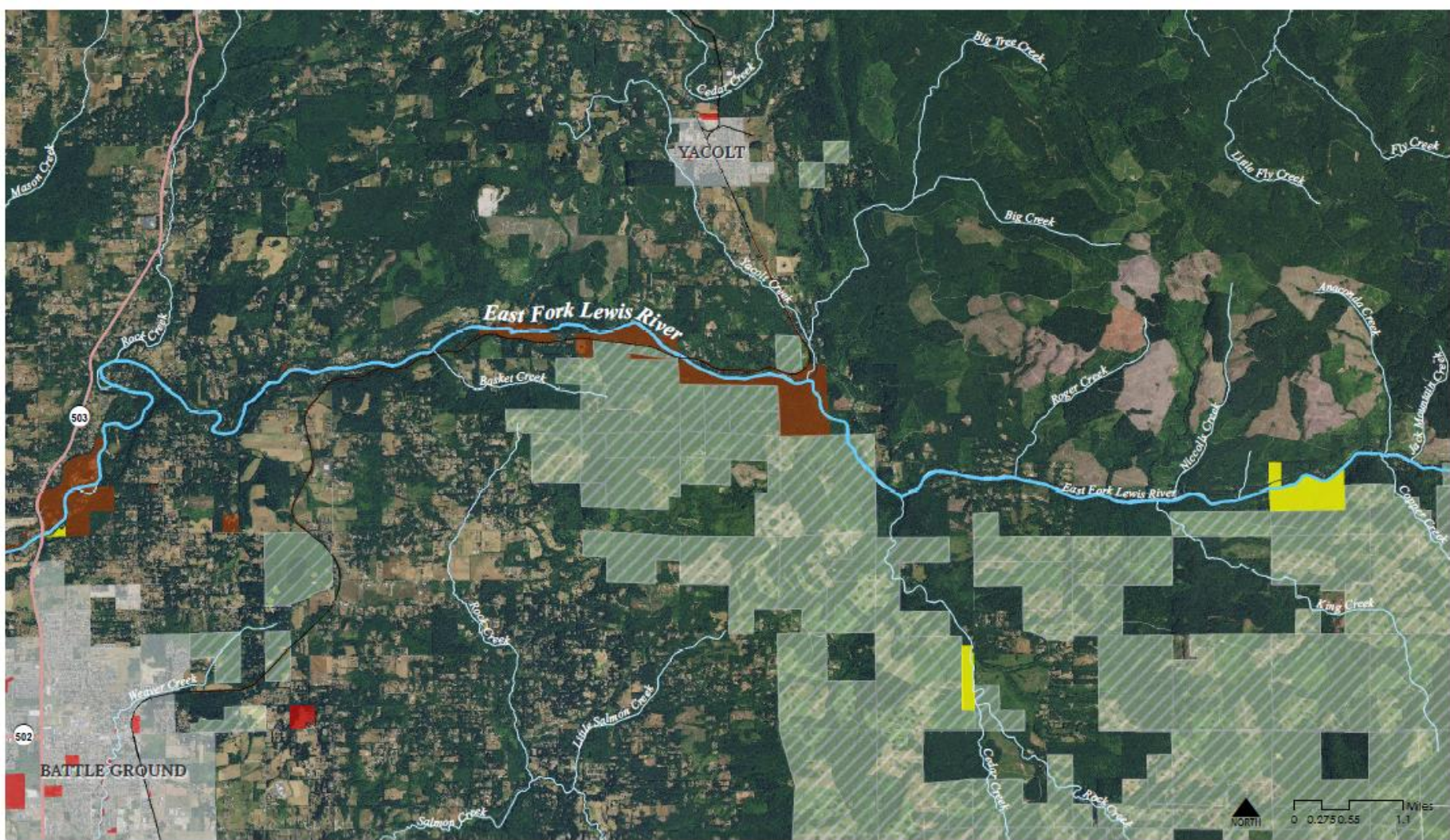
- City Boundaries
- County

TRANSPORTATION &

- Interstates
- Highways
- Major Rivers



COL





EAST FORK LEWIS RIVER - CONSERVATION CORRIDOR

7/30/2018




LAND

-  Federal & State Government
-  Clark County
-  City (Battle Ground, La Center, Ridgefield, Vancouver, Yacolt)
-  Columbia Land Trust

ADMINISTRATIVE

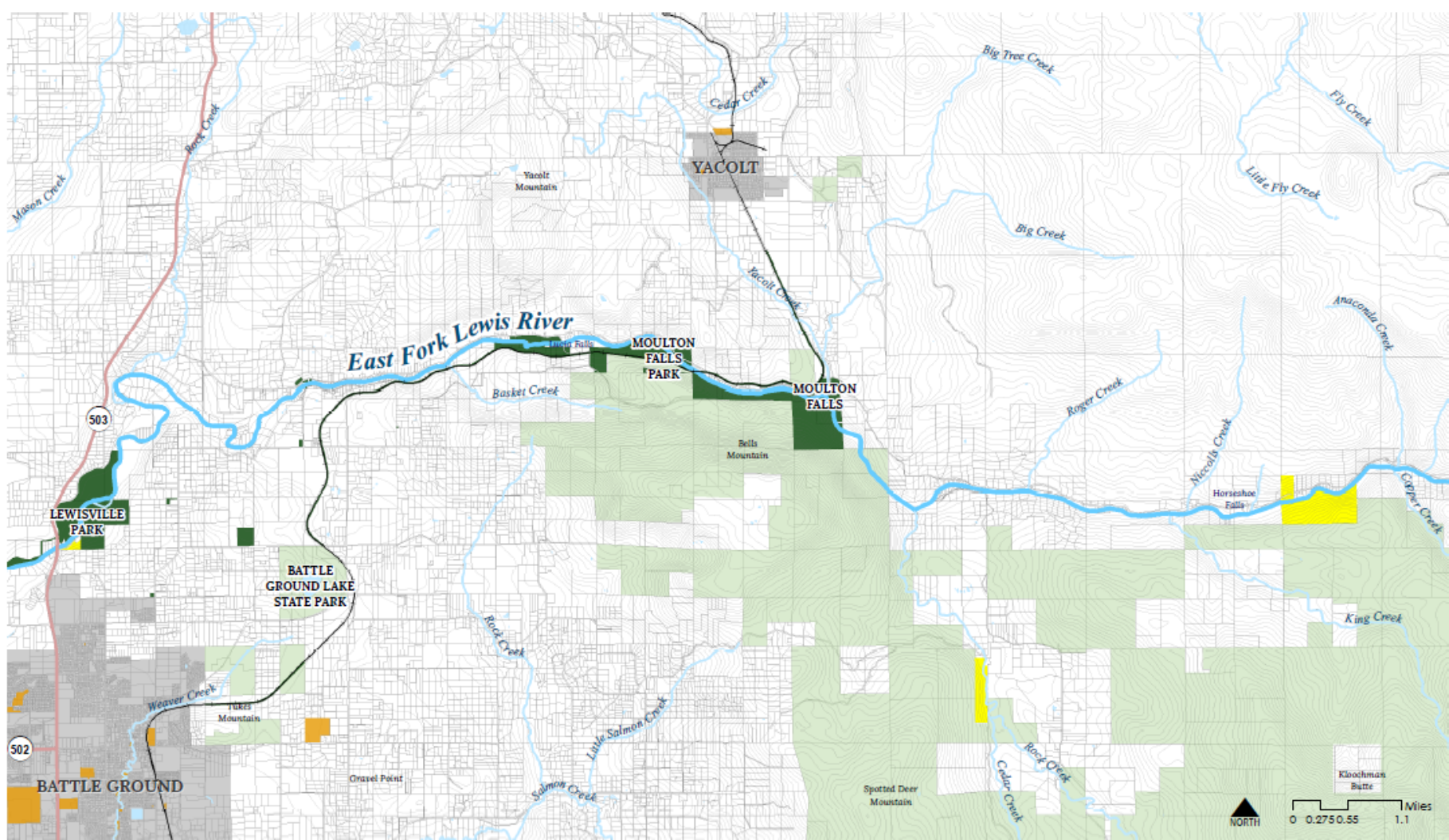
-  City Boundaries
-  County

TRANSPORTATION &

-  Interstates
-  Highways
-  Major Rivers



COL



EAST FORK LEWIS RIVER - CONSERVATION CORRIDOR

7/30/2018

LAND

- Federal & State Government
- Clark County
- City (Battle Ground, La Center, Ridgefield, Vancouver, Yacolt)
- Columbia Land Trust

ADMINISTRATIVE

- City Boundaries
- County

TRANSPORTATION &

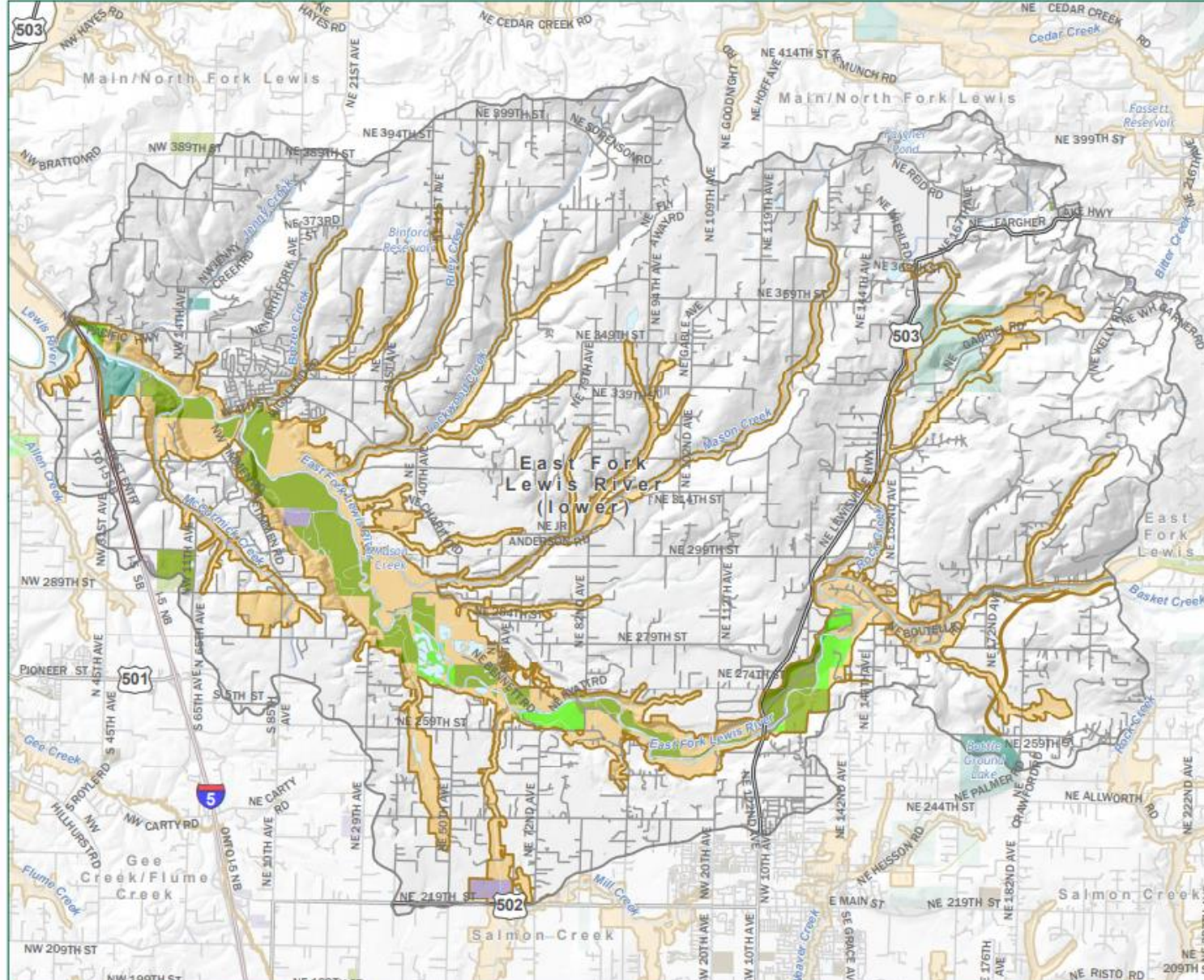
- Interstates
- Highways
- Major Rivers



COLU

East Fork Lewis River (lower)

Clark County Conservation Areas Acquisition Plan



Legend

High Value Conservation Lands

Project Area Boundary

Protected Lands

- Clark County
- Municipal
- USFWS
- US Forest Service
- Other Federal
- State Conservation
- WA DNR
- Other State Lands
- Private Conservation

Interstates

State Highways

Roads

Rivers & Creeks

Lakes



November 27, 2013
Data: Clark County, CLT, WSDOT, LGS

Aggregate benefits boundaries depicted on this map are approximate. They have not been formally delineated or surveyed and are intended for planning purposes only. Additional site-specific evaluation may be needed to confirm/verify information.



Plan produced by Columbia Land Trust
Cartography by Columbia

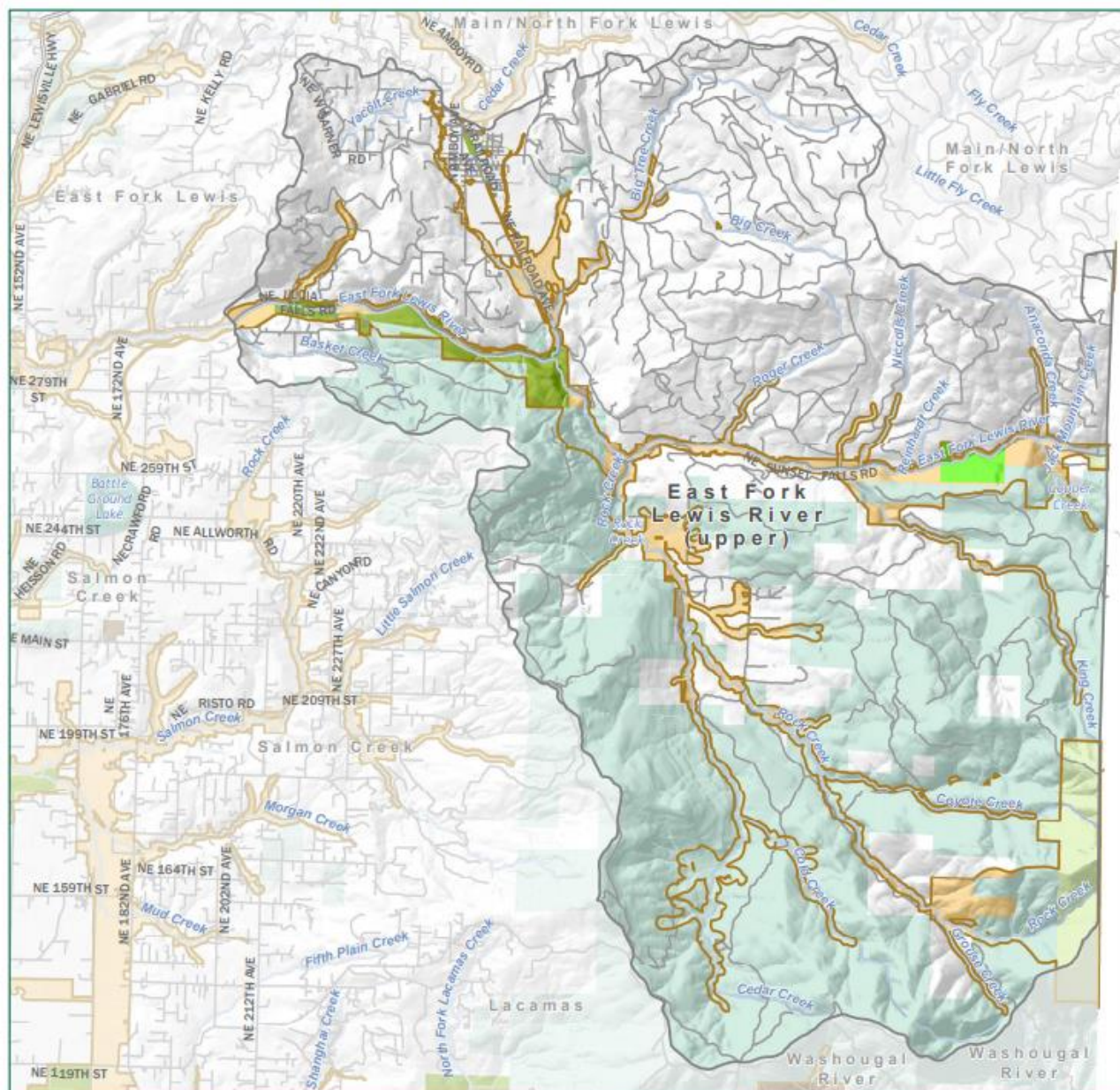
Area	Population		Streams	UGA/City
All area measurements are in acres				
Total Area	54,926	2000	Fish-bearing	540,161
High Value Conservation Lands	8,971	2010	Salmon-bearing	429,312
Public/Protected Lands Within High Value Conservation Lands	2,112	Change 2000-2010	Percent Salmon-bearing	79%
Number of Public/Protected Parcels	178	Percent Change 2000-2010		
				City/UGA
				Pct City/UGA
				3,543
				6%



CC

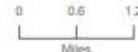
East Fork Lewis River (upper)

Clark County Conservation Areas Acquisition Plan



Legend

- High Value Conservation Lands
- Project Area Boundary
- Protected Lands**
- Clark County
- Municipal
- USFWS
- US Forest Service
- Other Federal
- State Conservation
- WA DNR
- Other State Lands
- Private Conservation
- Interstates
- State Highways
- Roads
- Rivers & Creeks
- Lakes



November 27, 2013
Data: Clark County CLT, WSDOT, USGS

Aggregate benefit boundaries depicted on this map are approximate. They have not been formally delineated or surveyed and are intended for planning purposes only. Additional site-specific evaluation may be needed to confirm/verify information.



Plan produced by
Columbia Land Trust
Cartography by
www.coregis.net

Area	Population		Streams		UGA/City
All area measurements are in acres					
Total Area	51,550	2000	2,893	Fish-bearing	364,970
High Value Conservation Lands	6,853	2010	5,056	Salmon-bearing	246,528
Public/Protected Lands Within High Value Conservation Lands	1,451	Change 2000-2010	2,163	Percent Salmon-bearing	68%
Number of Public/Protected Parcels	92	Percent Change 2000-2010	75%		
				City/UGA	374
				Pct City/UGA	1%





Columbia Land Trust

CONSERVING THE NATURE YOU LOVE

Alice Williamson
awilliamson@columbialandtrust.org
360-213-1207
