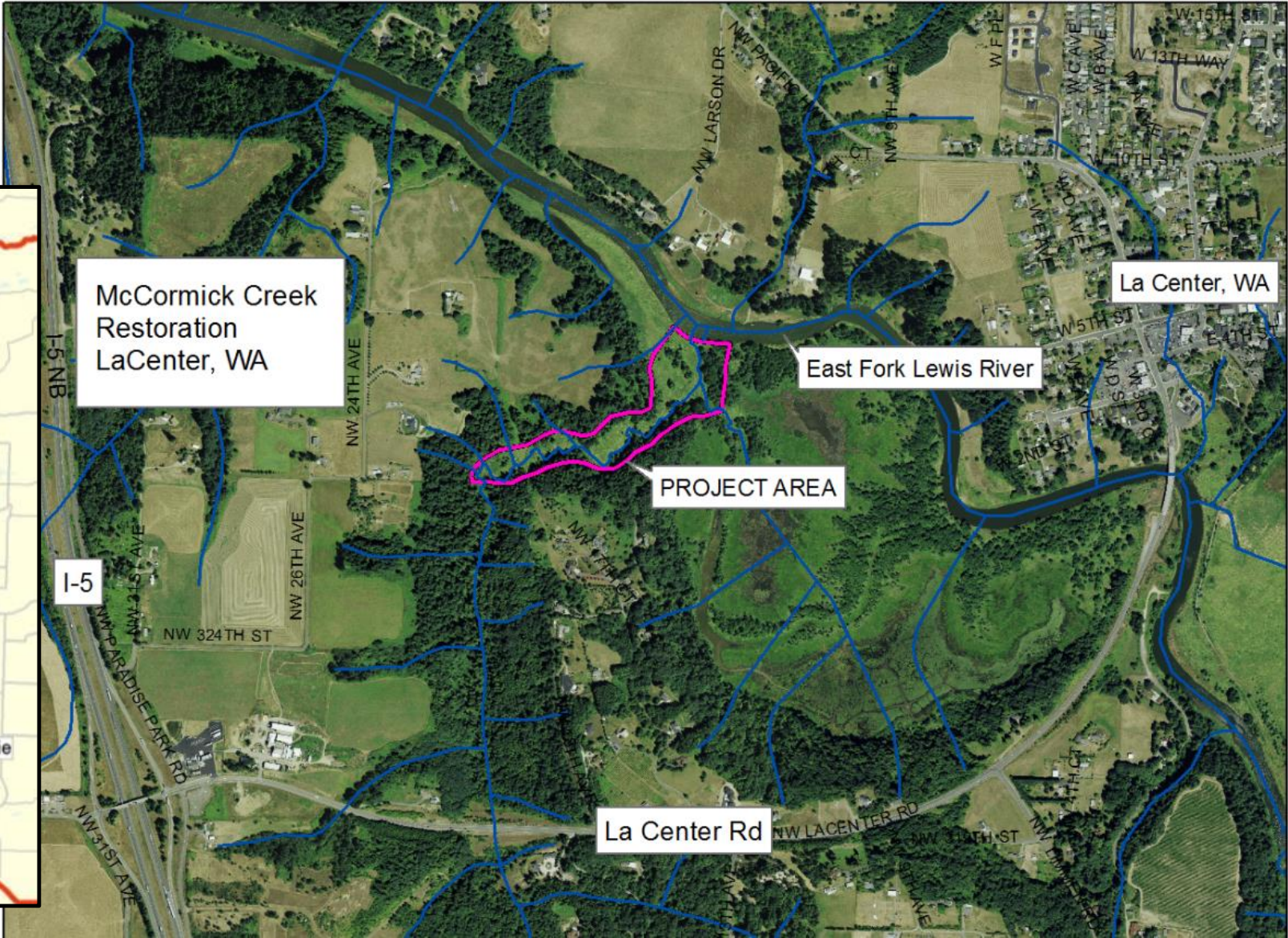


McCormick Creek Restoration

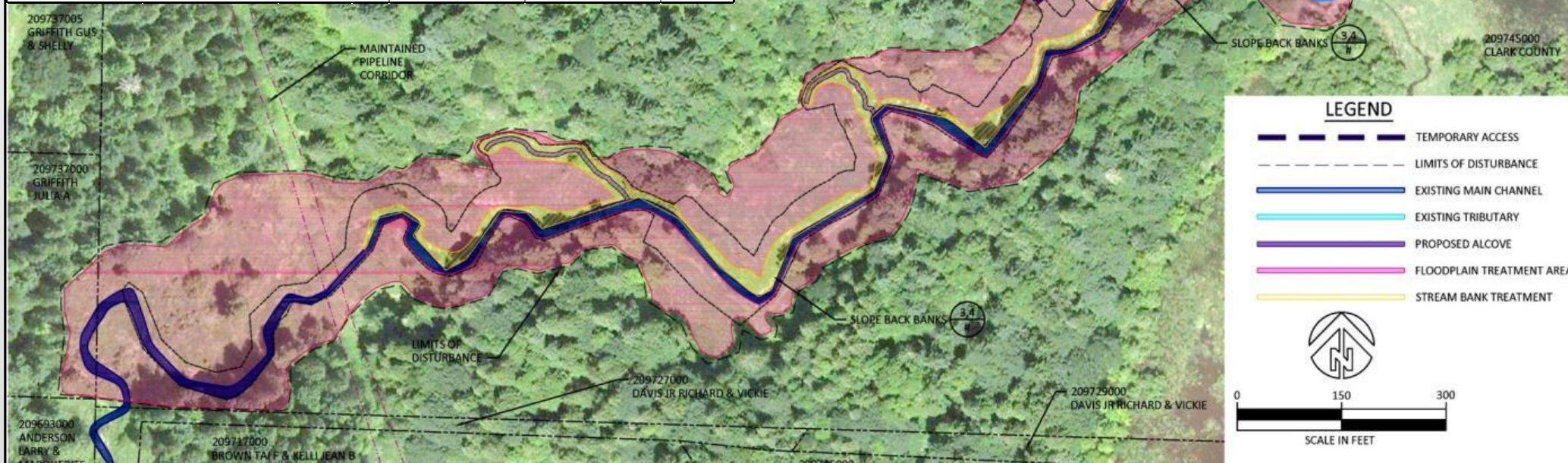


Project Location



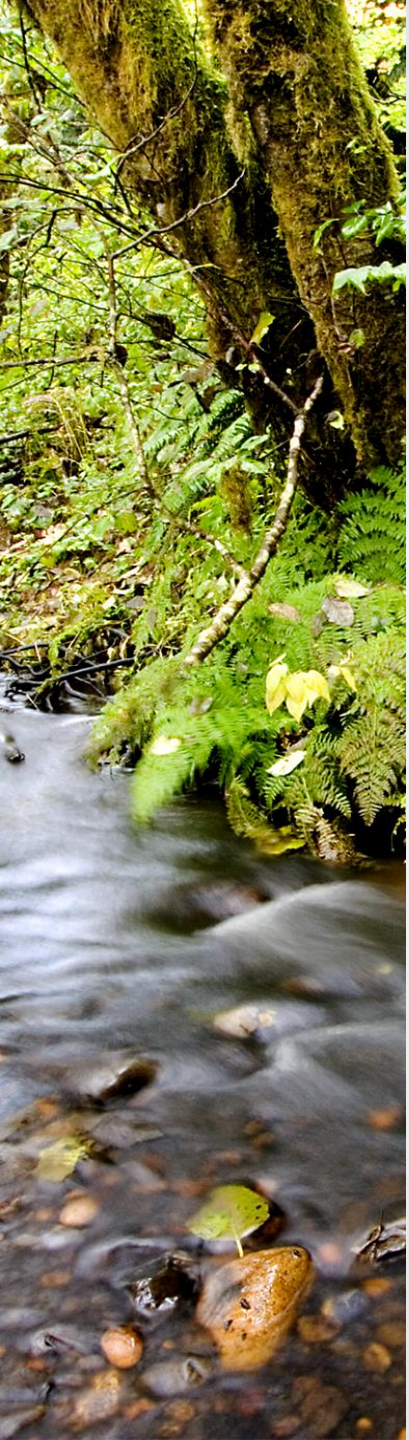
Project Site

McCormick Creek Riparian Restoration					
Bank & Riparian Vegetation			Floodplain Terrace		
		1.2 acres			15 acres
Species	Common name	Density	Species	Common name	Density
<i>Cornus sericea</i>	Red-osier dogwood	1,500/acre	<i>Cornus sericea</i>	Red-osier dogwood	700/acre
<i>Lonicera involucrata</i>	Black twinberry		<i>Lonicera involucrata</i>	Black twinberry	
<i>Physocarpus capitatus</i>	Pacific ninebark		<i>Physocarpus capitatus</i>	Pacific ninebark	
<i>Salix lasiandra</i>	Pacific willow		<i>Salix lasiandra</i>	Pacific willow	
<i>Salix sitchensis</i>	Sitka willow		<i>Salix sitchensis</i>	Sitka willow	
<i>Spirea douglasii</i>	Douglas' spirea		<i>Spirea douglasii</i>	Douglas' spirea	
<i>Alnus rubra</i>	Red alder	800/acre	<i>Acer macrophyllum</i>	Bigleaf maple	900/acre
<i>Crataegus douglasii</i>	Douglas hawthorn		<i>Alnus rubra</i>	Red alder	
<i>Fraxinus latifolia</i>	Oregon ash		<i>Crataegus douglasii</i>	Douglas hawthorn	
<i>Populus trichocarpa</i>	Black cottonwood		<i>Fraxinus latifolia</i>	Oregon ash	
<i>Pyrus fusca</i>	Pacific crabapple		<i>Populus trichocarpa</i>	Black cottonwood	
			<i>Pyrus fusca</i>	Pacific crabapple	
			<i>Thuja plicata</i>	Western red-cedar	



Goals / Objectives

- ▶ Create resilient riparian and floodplain plant communities
- ▶ Create in-stream habitat
- ▶ Improve floodplain function
- ▶ Improve water quality impairments impacting salmonids and other aquatic species



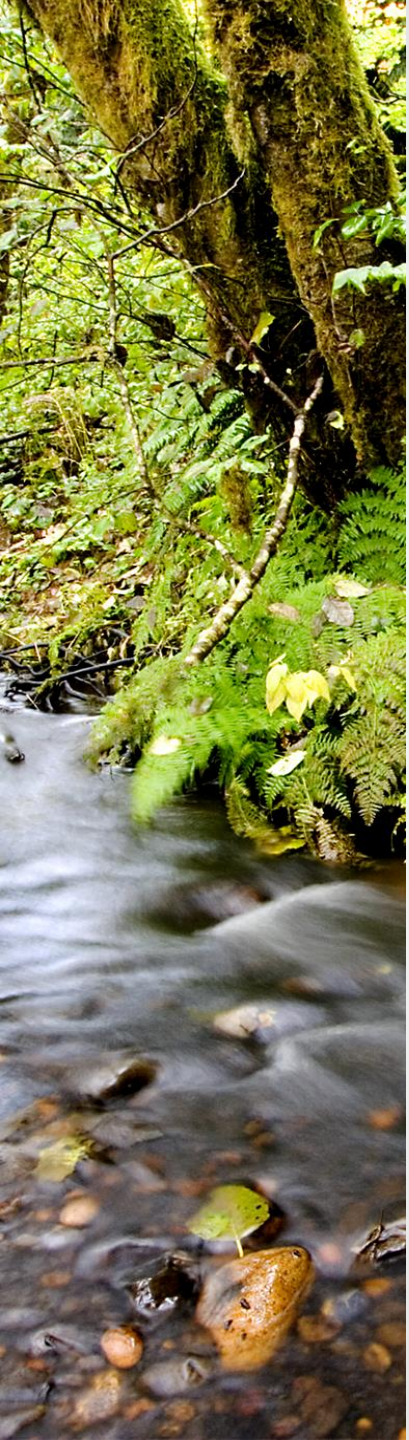
Biological Objectives

- ▶ McCormick Creek 01 (Tier 2)
 - Received highest score - Lower EF Lewis Assessment
 - Coho
 - Steelhead
 - Chinook
 - Chum?



Water Quality Objectives

- ▶ WQ impairments
 - Temperature
 - Fecal coliform
 - Turbidity



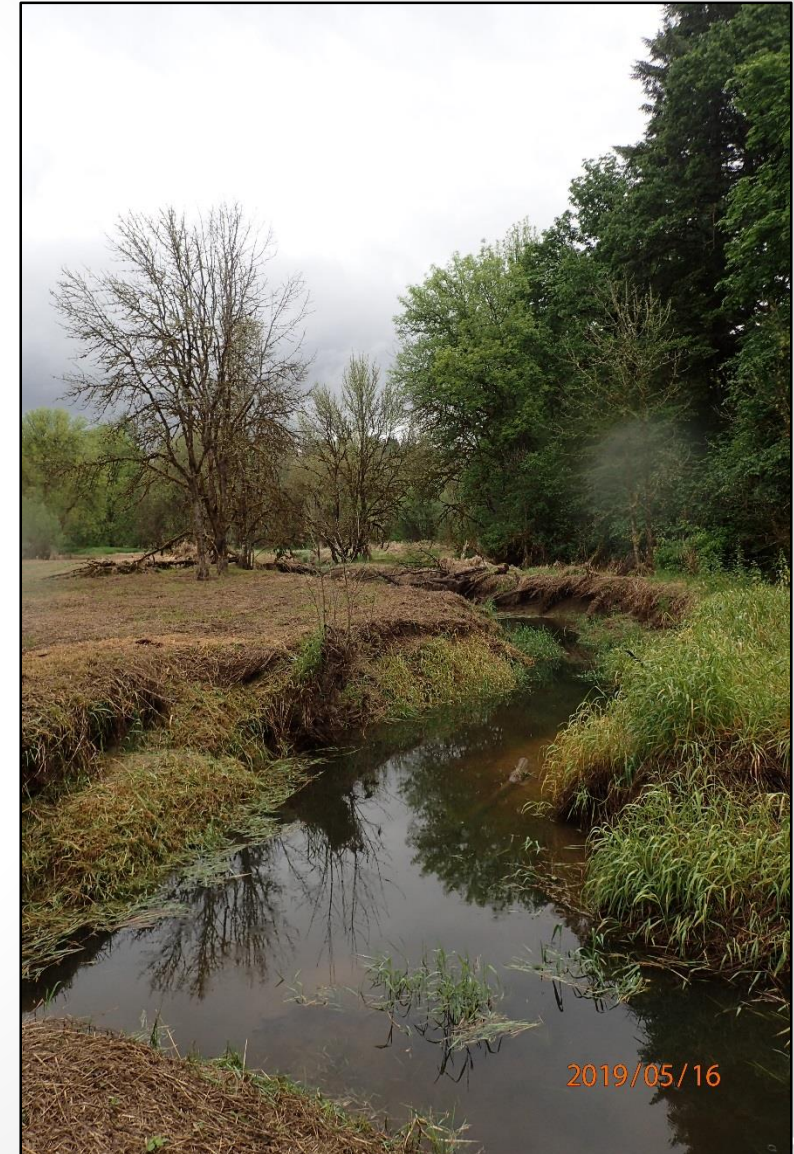
Tasks / Metrics

- ▶ 240+ pieces of LWD
- ▶ 16+ acres invasives
- ▶ 26 acres total
- ▶ ½ mile of stream corridor
- ▶ 28,000 plants
- ▶ 1,400 ft bank stabilization
- ▶ Off-channel habitat creation



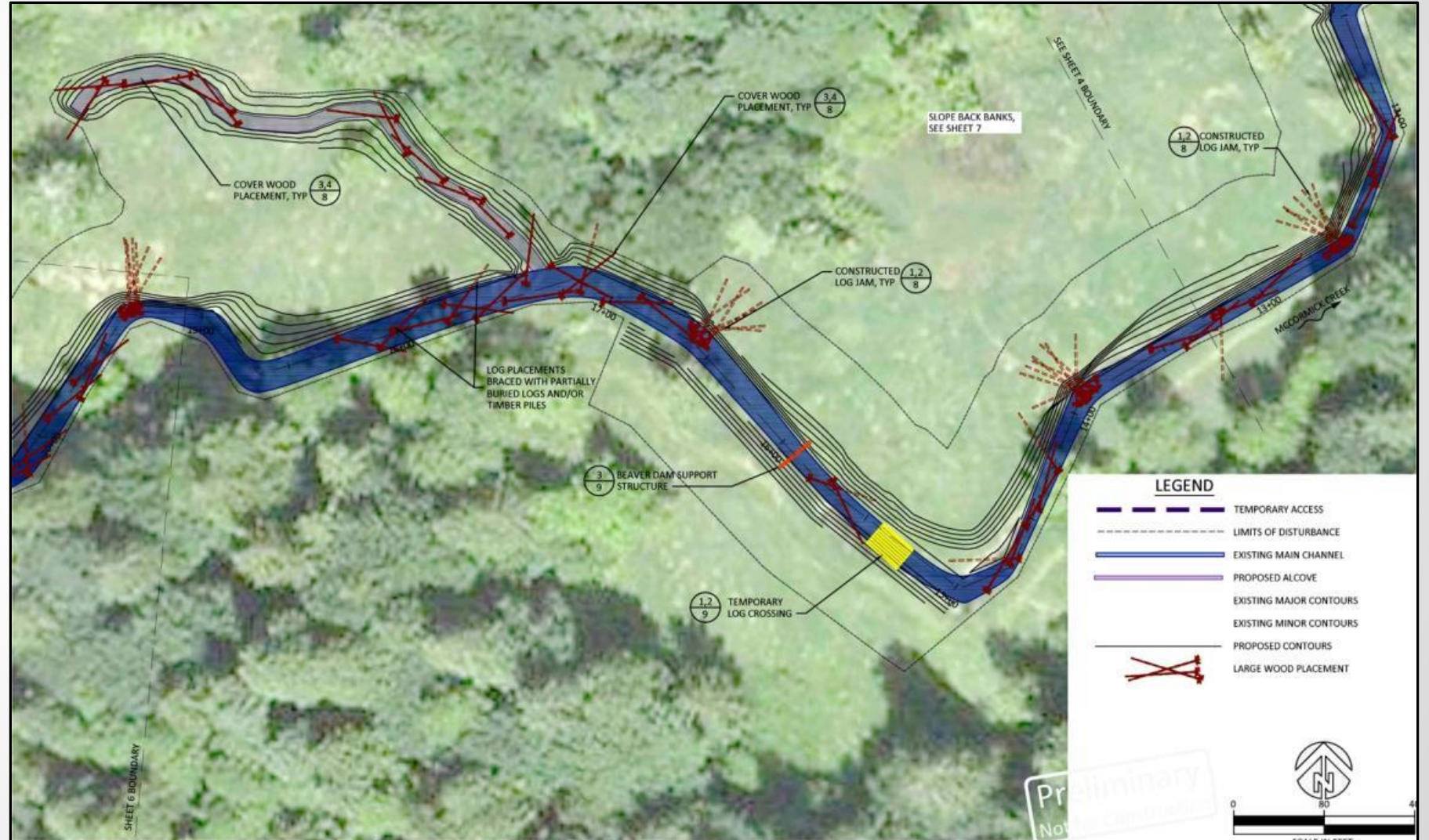
Schedule

- ▶ Site Prep Summer / Fall 2019
- ▶ Planting – Stage 1 Winter 2020
- ▶ In-stream work Summer 2020
- ▶ Planting – Stage 2 Winter 2021



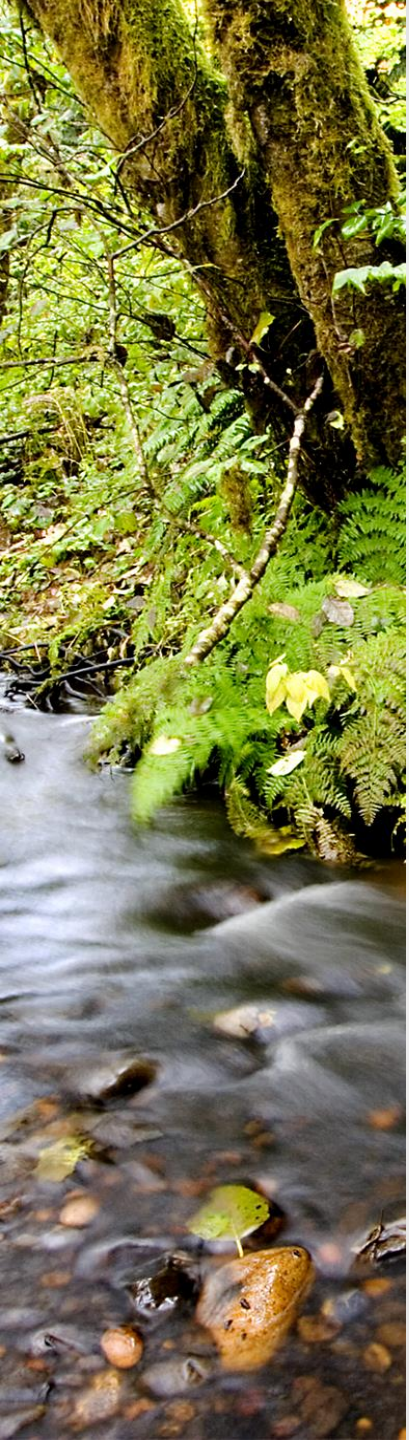
Instream habitat

- ▶ LWD & Side channel alcoves



Questions?







Instream habitat

- ▶ LWD
- ▶ Side channel alcoves

