

East Fork Lewis River

Restoration Projects and Assessments

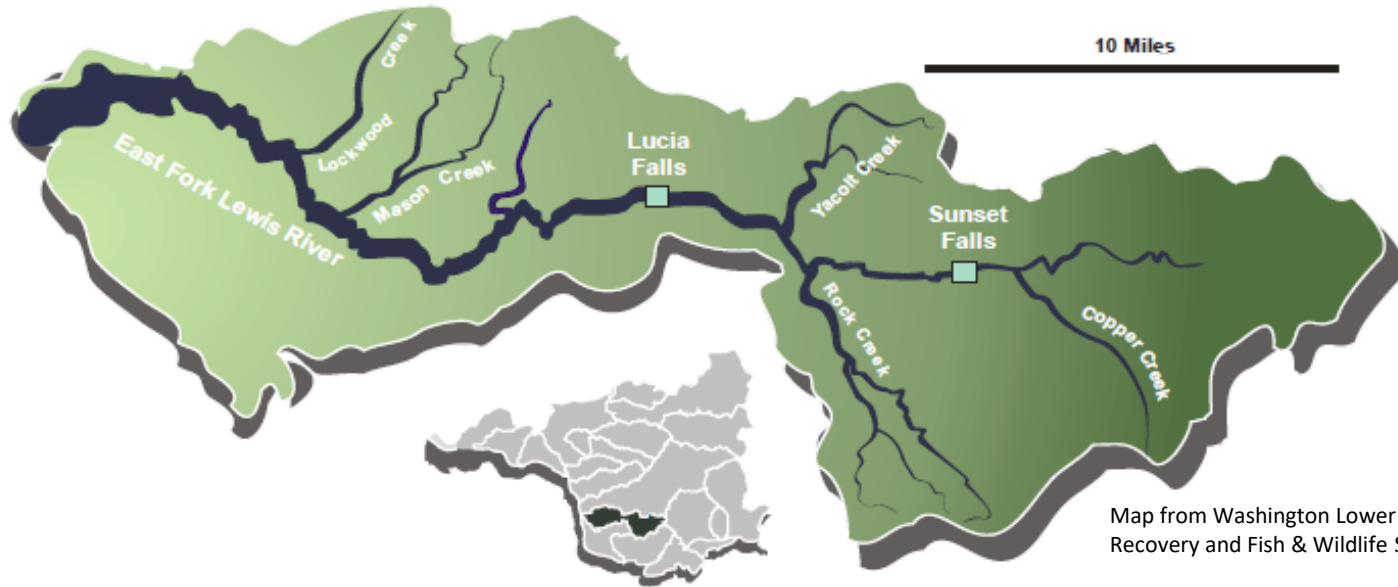


Lower Columbia
Estuary
Partnership

Jenny Dezso, LCEP

EFLR Partnership Meeting
January 29, 2020

East Fork Lewis River



10 Miles

Map from Washington Lower Columbia Salmon Recovery and Fish & Wildlife Subbasin Plan

CHAPTER 4: EAST FORK LEWIS RIVER BASIN – HABITAT ASSESSMENT

Lower East Fork Lewis River

Habitat Restoration Plan

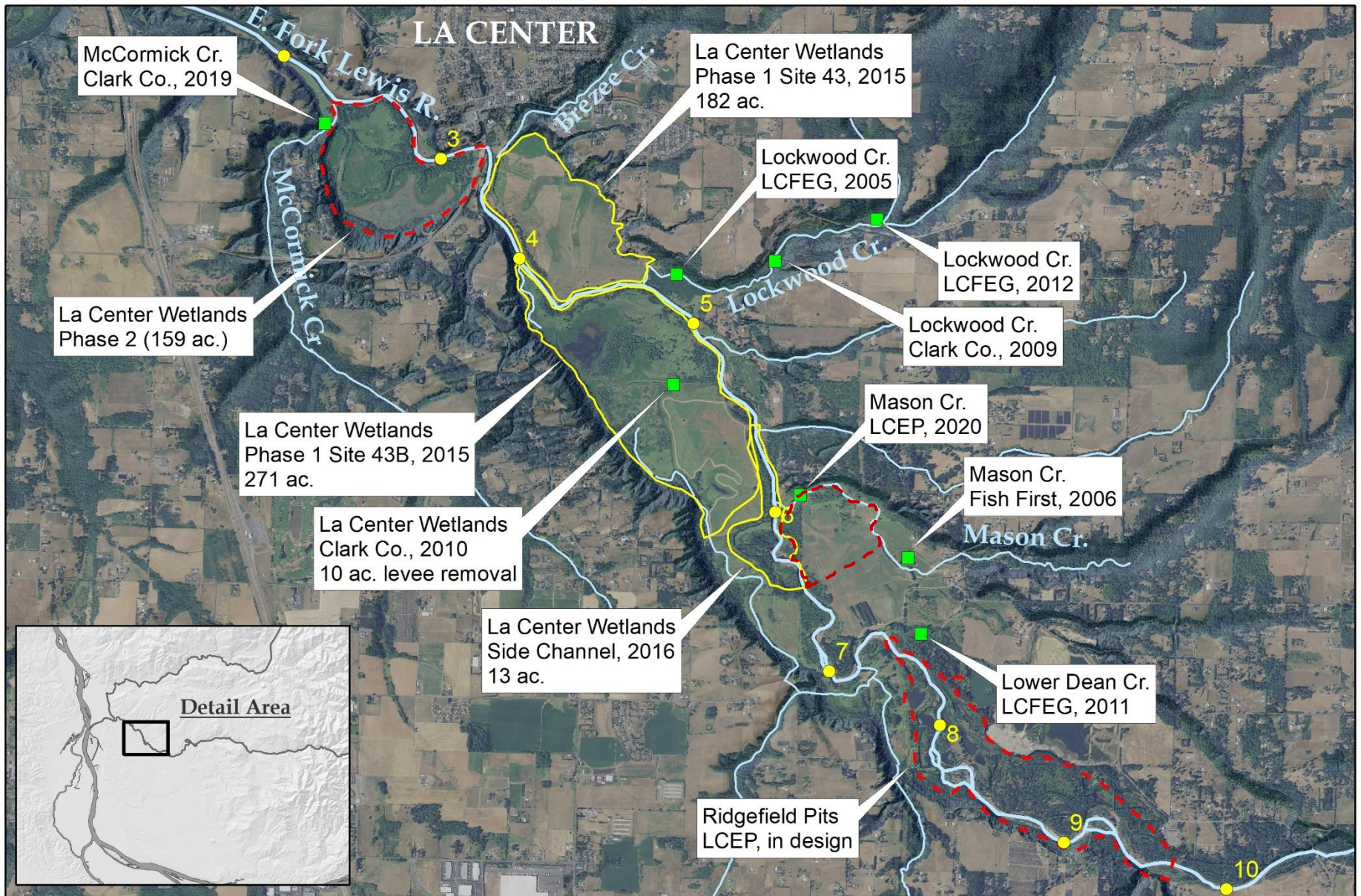


Survey on Rock Creek (upper) in the East Fork Lewis River Basin – October 2004

Prepared for

Lower Columbia Fish Recovery Board
2127 8th Avenue
Longview, Washington 98637





Lower East Fork Lewis R. Floodplain Restoration Sites. Clark County, Washington

LCEP Floodplain Restoration

Other

River Mile

Project Site

Completed Design



0 0.4 0.8
SCALE IN MILES



La Center Wetlands (2015)



★ Levee breach

● Fish passage improvement

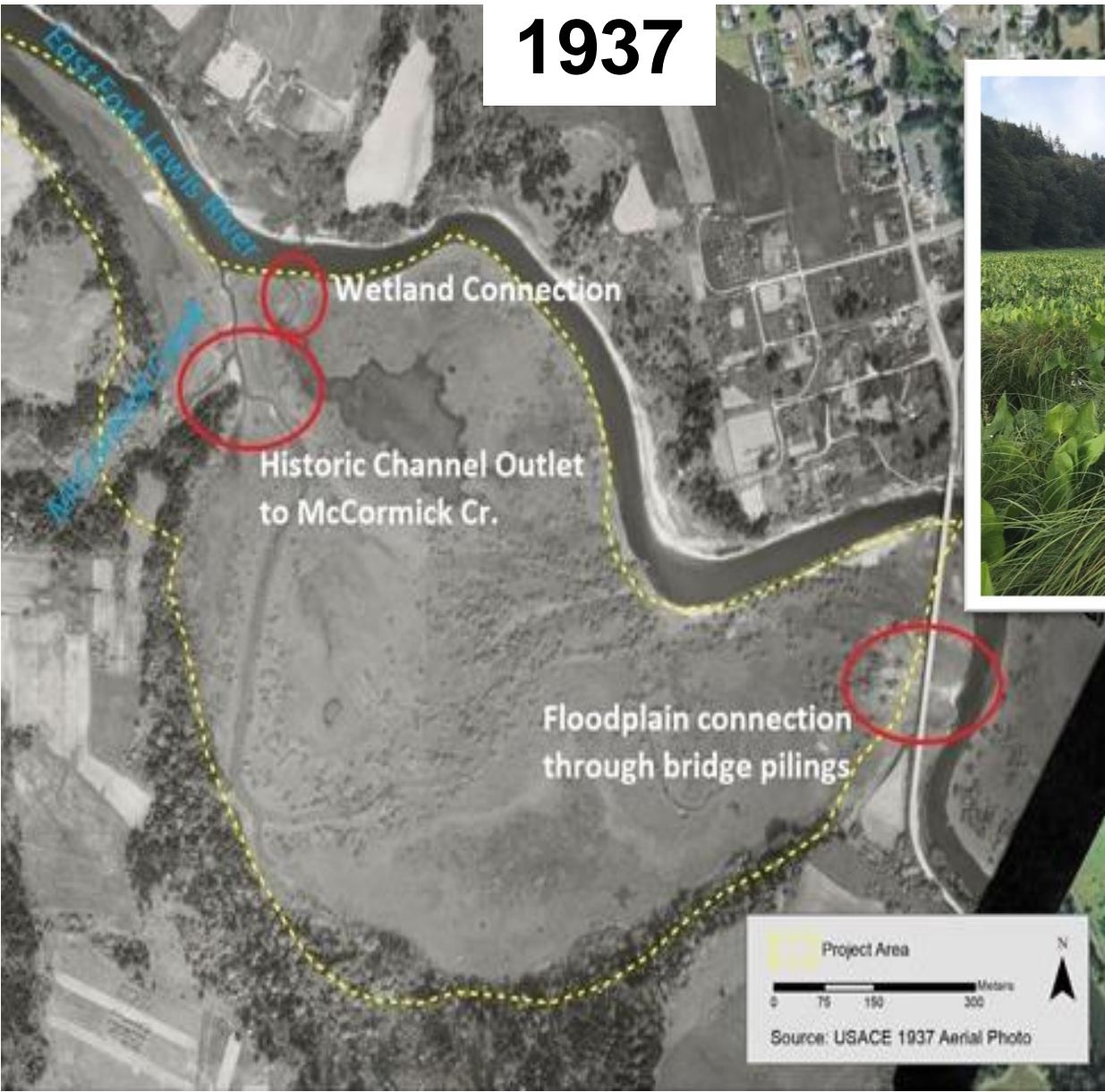
— Channel realignment and riparian improvement

EFLR Side Channel (2016)



La Center Wetlands Phase II

1937

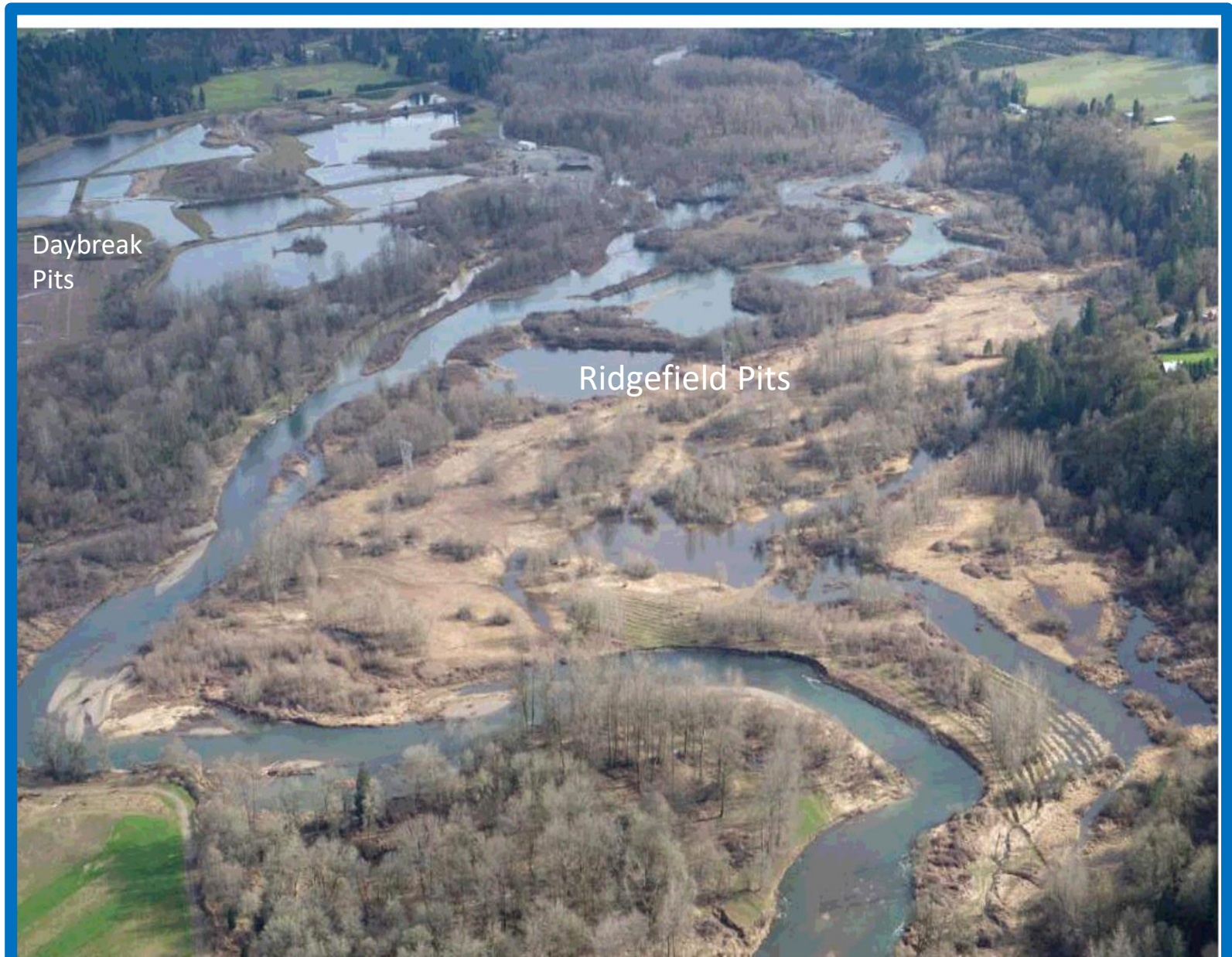


Mason Creek

- Clark County acquired 62 acres of floodplain, wetlands and 4,200 ft. of the creek
- Improve habitat/physical conditions, reconnect wetlands & riparian area
- Developing restoration designs to assist ecology, focus: juvenile and adult salmon & steelhead



Ridgefield Pits Design



Thermal Assessment

- Data show EFLR temps exceed lethal salmon/steelhead levels (WDFW, Ecology, LCEP & others)
- Assessing & restoring thermal refuges are a high priority on EFLR (LCFRB 2009)
- LCEP & partners will map cold water areas, habitat, riparian conditions on river miles 3- 19
- Develop restoration designs to improve thermal/habitat conditions



Thank You!

Jenny Dezso
Lower Columbia Estuary Partnership
Jdezso@estuarypartnership.org
503-226-1565 x225

