



Public Works
Clean Water

Schriber Reforestation Project

Chad Hoxeng

Natural Resources Specialist III

Schriber Property



Schriber Property



Overall Planting Plan



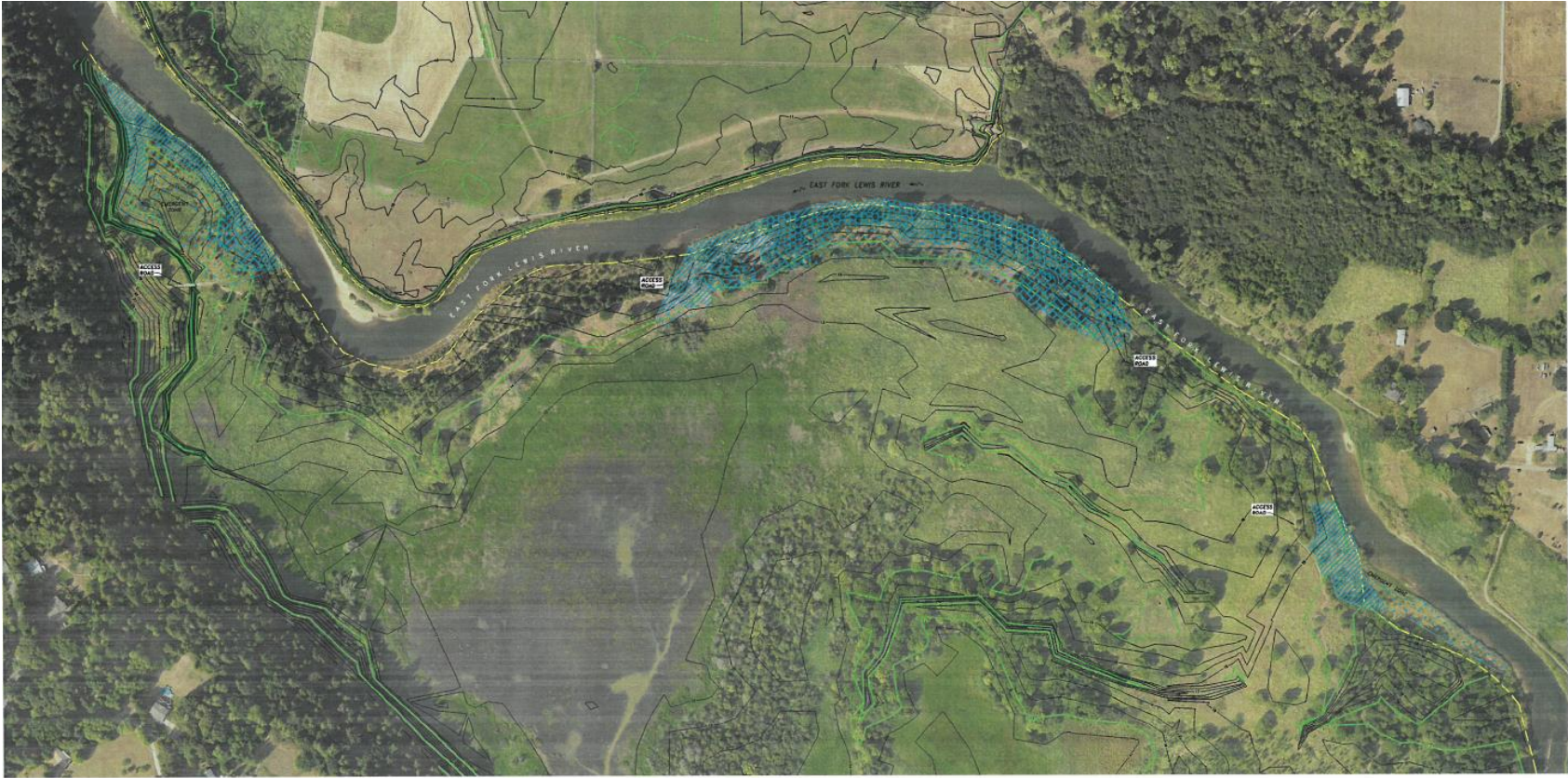
CLARK COUNTY
PUBLIC WORKS

CLEAN WATER PROGRAM

EAST FORK LEWIS RIVER
SCHRIEBER REFORESTATION
FIGURE 1: OVERALL PLANTING PLAN

CALL 48 HOURS BEFORE YOU DIG
1-800-553-4344
"It's the Low"
NORTHWEST UTILITIES NOTIFICATION CENTER

DESIGNED BK/JC
DRAWN JC
DATE 09/06/2019



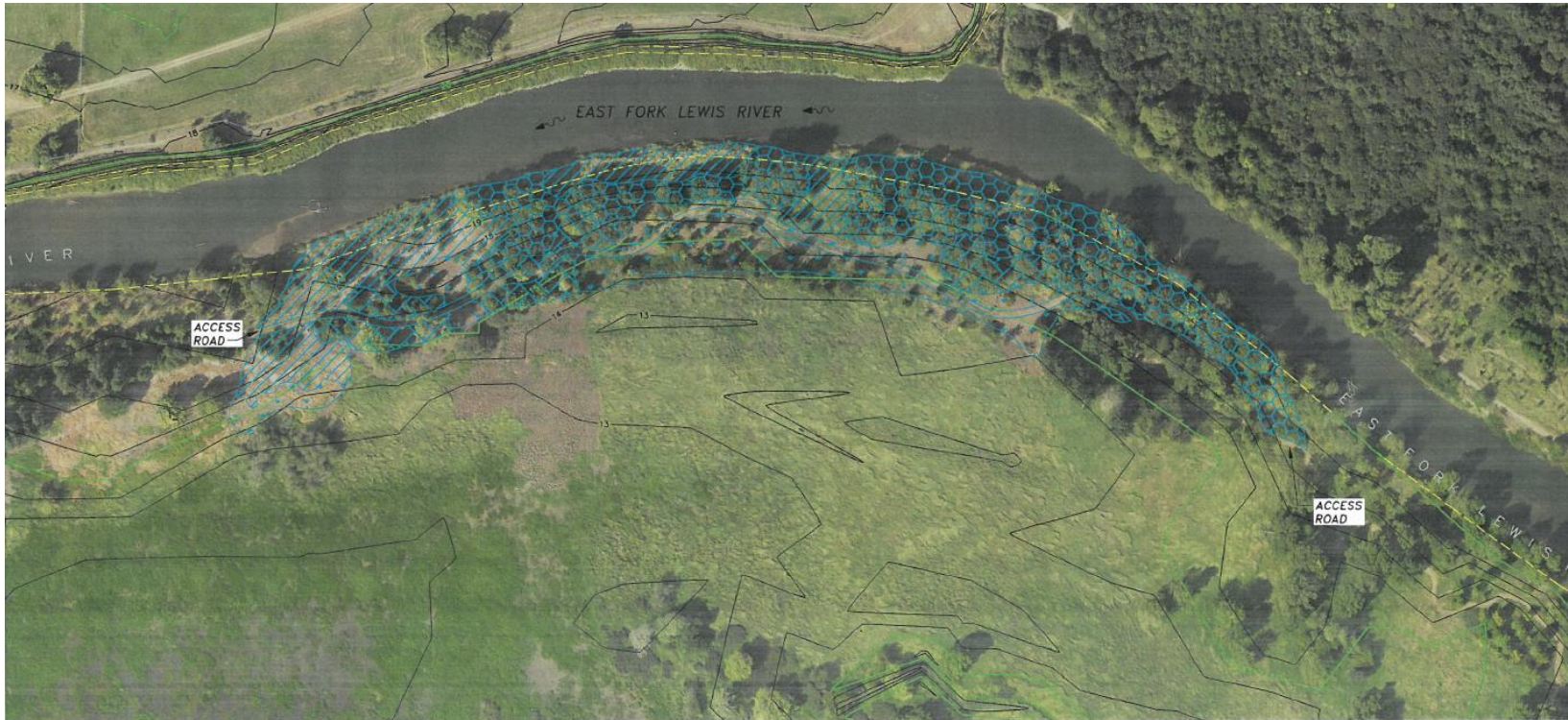
LEGEND

	SHADE TOLERANT LOWER ELEVATION (2.20 AC)
	SHADE TOLERANT UPPER ELEVATION (2.43 AC)
	FULL SUN UPPER ELEVATION (3.75 AC)
	FULL SUN LOWER ELEVATION (3.86 AC)



7.00 x 11.00 in

Phase 1 (2020)



LEGEND - PHASE 1

	SHADE TOLERANT LOWER ELEVATION (0.78 AC)
	SHADE TOLERANT UPPER ELEVATION (2.43 AC)
	FULL SUN UPPER ELEVATION (1.45 AC)
	FULL SUN LOWER ELEVATION (1.37 AC)

00 x 11.00 in



CLARK COUNTY
PUBLIC WORKS

CLEAN WATER PROGRAM

EAST FORK LEWIS RIVER
SCHRIBER REFORESTATION
FIGURE 2: PHASE 1 PLANTING PLAN

CALL 48 HOURS BEFORE YOU DIG

1-800-553-4344
"It's the Low"



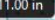
NORTHWEST UTILITIES NOTIFICATION CENTER

DESIGNED	BK/JC
DRAWN	JC
DATE	09/06/2019

Phase 2 (2021)



LEGEND - PHASE 2

-  SHADE TOLERANT LOWER ELEVATION (1.42 AC)
-  FULL SUN UPPER ELEVATION (2.30 AC)
-  FULL SUN LOWER ELEVATION (2.49 AC)

7.00 x 11.00 in



**CLARK
COUNTY
PUBLIC WORKS**

**CLEAN
WATER
PROGRAM**

**EAST FORK LEWIS RIVER
SCHRIBER REFORESTATION
FIGURE 3: PHASE 2 PLANTING PLAN**

CALL 48 HOURS
BEFORE YOU DIG
1-800-
553-4344
"It's the Low"
NORTHWEST
UTILITIES
NOTIFICATION CENTER

DESIGNED BK/JC
DRAWN JC
DATE 09/06/2019