



## CULTURAL RESOURCES FIELD GUIDE:

*A visual guide to historic and archeological materials you might find in the field*

Department of Archaeology &  
Historic Preservation  
(360) 586-3067

State Physical Anthropologist  
D (360) 586-3534  
C (360) 790-1633

**Remember, if an inadvertent discovery does occur, you must follow the steps in your inadvertent discovery plan (IDP)**

## INTRODUCTION

The following information outlines a condensed version of the procedures to follow in the event of discovering historic or archaeological materials, or human remains, in accordance with state and federal laws.

## RECOGNIZING CULTURAL RESOURCES

*A cultural resource discovery could be prehistoric or historic.*

*Examples include:*

- An accumulation of shell, burned rocks, or other food related materials.
- Bones or small pieces of bone.
- An area of charcoal or very dark stained soil with artifacts.
- Stone tools or waste flakes (i.e., an arrowhead or stone chips).
- Clusters of tin cans or bottles, logging, fishing, agricultural, or other equipment that appears to be older than 50 years.
- Buried bricks, railroad tracks, decking, or other manufactured materials.

**When in doubt, assume the material is a cultural resource**

## ON-SITE RESPONSIBILITIES

*When cultural resources are uncovered:*

**ALL WORK MUST STOP!**

**STEP 1: Stop Work.** If any employee, contractor, or subcontractor believes that he or she has uncovered a cultural resource at any point in the project, all work **must stop immediately**. Notify the appropriate parties and immediately **protect and secure the area!**

**STEP 2: Notify a qualified Archaeologist**, or if there is a monitoring plan in place, **notify the Archaeological Monitor** assigned to the project, who will then follow procedure.

**STEP 3: Notify the Project Manager**, and the **Ecology Staff Member in charge** of the project, as well as any other applicable contacts!

**\*If one suspects human remains have been discovered, call both the local police and coroner. They will determine if the remains are human and forensic.**

E-CREW

Ecology Cultural Resources  
Environmental Workgroup

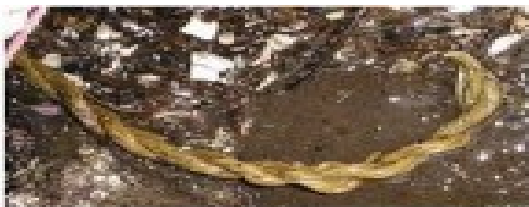


**Implement the IDP protocol if:**

**You see bone artifacts**



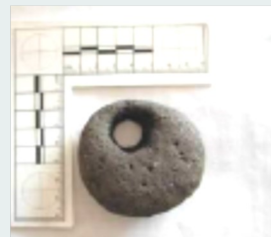
**You see shell artifacts**



**You see worked fiber**

**Implement the IDP protocol if:**

**You see chipped stone artifacts**



**Implement the IDP protocol if:**

**You see unusual looking dirt,  
rocks or shells**

