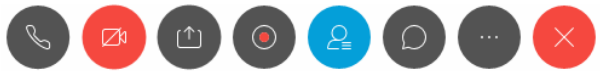


# Welcome

Please connect your audio using steps 1, 2, and 3

We will do a sound check shortly

**1** Move cursor to bottom of your screen to show Webex controls.

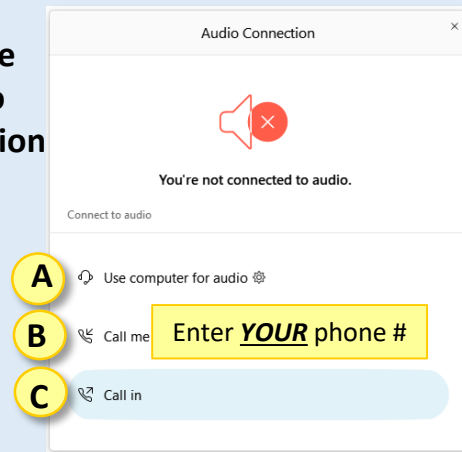


**2** Select "Connect to Audio" icon.



**3** Choose Audio Connection

3 Options



**A. Use computer for audio**

**B. Call me at (enter your phone number)**

- WebEx calls you.
- You listen through your phone

**C. Call in (using your phone)**

- Call toll free: 855-929-3239
- Enter meeting code

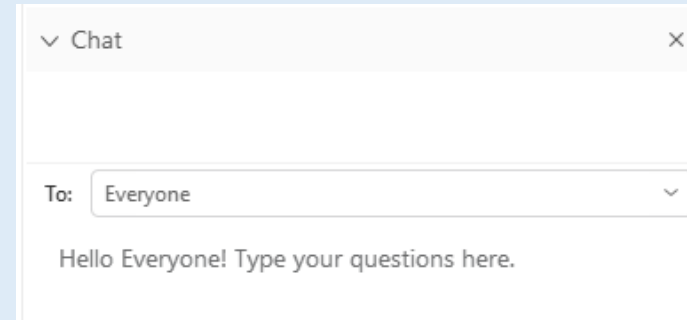
**NOTHING WORKING? Use the chat box to send us a message.**



# How to Participate Today



**You can ask questions via the chat function**

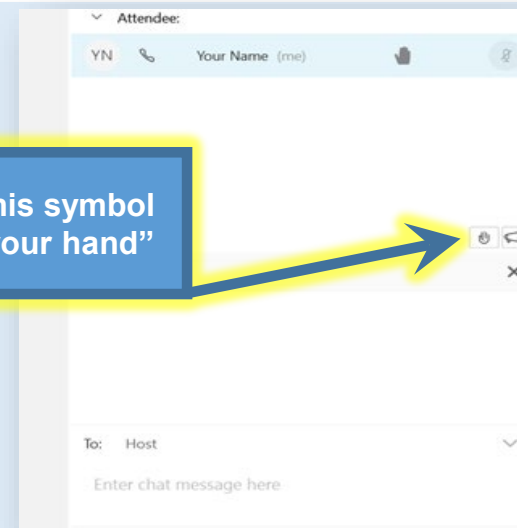


**You can also ask questions by raising your hand so we can unmute you to participate**

**We ask that you:**

1. **State your name** first before speaking.
2. **Mute your audio** unless speaking.
3. **Turn off your video** to save bandwidth

Click on this symbol to "raise your hand"

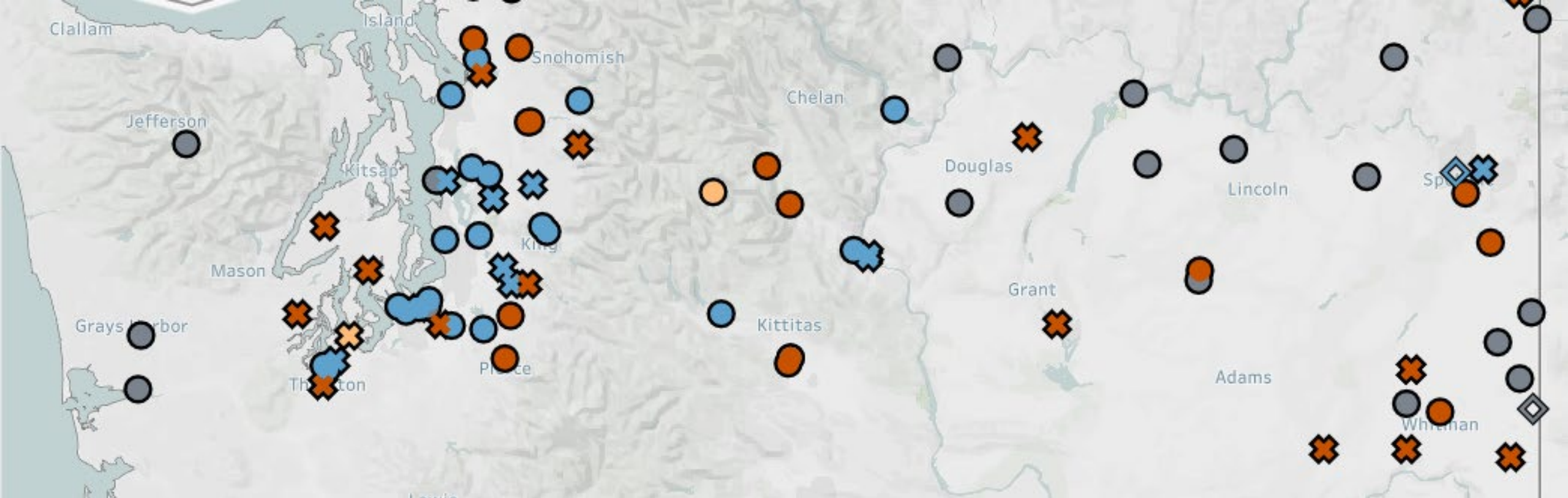


# Water Quality Partnership

## September 17, 2020

|  |                              |               |
|--|------------------------------|---------------|
| <b>Welcome &amp; Introductions</b>   | Vince McGowan                | 10:00 – 10:05 |
| <b>Updates - Legislative &amp; Budget<br/>From Ecology &amp; Partnership</b> | Vince McGowan                | 10:05 – 10:15 |
| <b>Nutrients General Permit Update</b>                                       | Eleanor Ott<br>Vince McGowan | 10:15 – 10:35 |
| <b>Columbia River TMDL Update</b>  | Kelly Ferron                 | 10:35 - 10:55 |
| <b>Net Pen's – Species Change Update</b>                                     | Laurie Niewolny              | 10:55 – 11:15 |
| <b>Salmon Habitat Rulemaking Update</b>                                      | Bryson Finch                 | 11:15 – 11:35 |
| <b>Roundtable</b>  | All                          | 11:35 – 11:50 |
| <b>Closing – Future agenda topics</b>  | Vince McGowan                | 11:50 – 12:00 |





# Legislative & Budget Updates

Vince McGowan





# Nutrients General Permit

**Eleanor Ott**







# Net Pens Species Change

Laurie Niewolny







*Salmo salar* (Atlantic salmon)



*Oncorhynchus mykiss* (Steelhead)

## Draft NPDES permits to raise sterile female steelhead at four Cooke Aquaculture net pens in Puget Sound

1. Hope Island

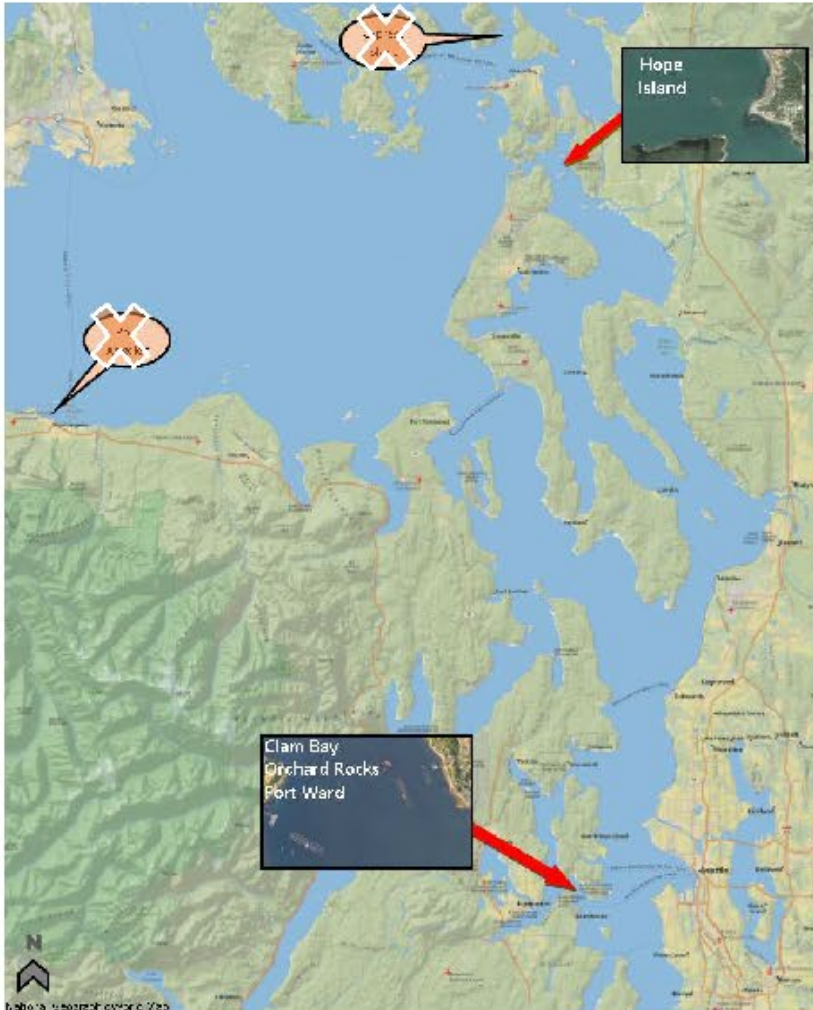
Near La Conner in Skagit County

2. Clam Bay

3. Orchard Rocks

4. Fort Ward

In Rich Passage in Kitsap County



### Submitting public comment:

Submit comments at: <http://wq.ecology.commentinput.com/?id=HEdBM>

Public Hearing on October 14 at 6PM

Comment period closes Monday, October 26

### More information:

<https://ecology.wa.gov/Water-Shorelines/Shoreline-coastal-management/Aquaculture/Net-pens>



# EPA's TMDL for Temperature in the Columbia and Lower Snake Rivers

Kelly Ferron

[Kelly.Ferron@ecy.wa.gov](mailto:Kelly.Ferron@ecy.wa.gov)

360-764-3583





# Salmon are in hot water in the Columbia and Lower Snake Rivers



Temperature standards **68-72°F**

July-September months do not meet standards

# Salmon are in hot water in the Columbia and Lower Snake Rivers



Temperature standards **68-72°F**

July-September months do not meet standards





# What happened this summer

May  
2020

EPA published final temperature TMDL

August  
2020

We submitted comment to EPA

Fall  
2020

Early stages of implementation



# EPA's Temperature TMDL

Temperature standards are not being met in summer months

Most dominant sources of temperature = dams & climate change

Standards may not be met in all places, at all times

- Use Attainability Analysis





# EPA's Temperature TMDL

Allocation (Load) for temperature sources =  $0.3^{\circ}\text{C}$

- Dams
- Tributaries
- Point sources

Little guidance on addressing upstream sources and climate change



# Our comments to EPA



We are focused on implementation, not changing standards

Addressing climate change

Upstream sources

More guidance and partnership from EPA

Working with dams





# Working with federal dams



In May 2020, Army Corps of Engineers appealed 401 certifications for 8 federal dams

# What does implementation look like?

## Stakeholder & Tribal engagement

+

## Writing a Plan

- Our strategy for addressing temperature
- Identifying tools in the toolbox





# Addressing different temperature sources



Federal & nonfederal dams



Tributaries



Point sources: NPDES permits





Questions?

Kelly Ferron  
[Kelly.Ferron@ecy.wa.gov](mailto:Kelly.Ferron@ecy.wa.gov)  
360-764-3583



# Salmon Spawning Habitat Protection Rule

## Water Quality Program



# Rule and Purpose

## Rule will include:

- Revising the current freshwater dissolved oxygen criteria
- Developing a new fine sediment criterion

## Purpose:

- Improve salmon spawning habitat
  - Ensure adequate dissolved oxygen levels in spawning gravels
  - Ensure physical structure of redds are conducive to spawning success





# Why Revise Freshwater DO Criteria?

- Federal concerns that WA freshwater DO criteria is not fully protective of incubating salmonid embryos
  - Addressed some concerns in 2009 (Publication 09-03-039)
- EPA's recommendation for **full protection: 11.0 mg/L**
  - WA standards for salmonid spawning: **8.0 – 9.5 mg/L**
- EPA assumes **3.0 mg/L reduction** in DO from the water column to interstitial spaces of gravel
  - Intragravel DO of 8.0 mg/L fully protective



# Why a Fine Sediment Criterion?

1. **Fine sediment is the Nation's #1 pollutant** (according to EPA)
2. Better protect salmonid spawning gravels
3. Meet obligations in a 2018 US District Court Stipulated Order of Dismissal between EPA and a NGO
4. Current narrative criteria does not specifically address fine sediment



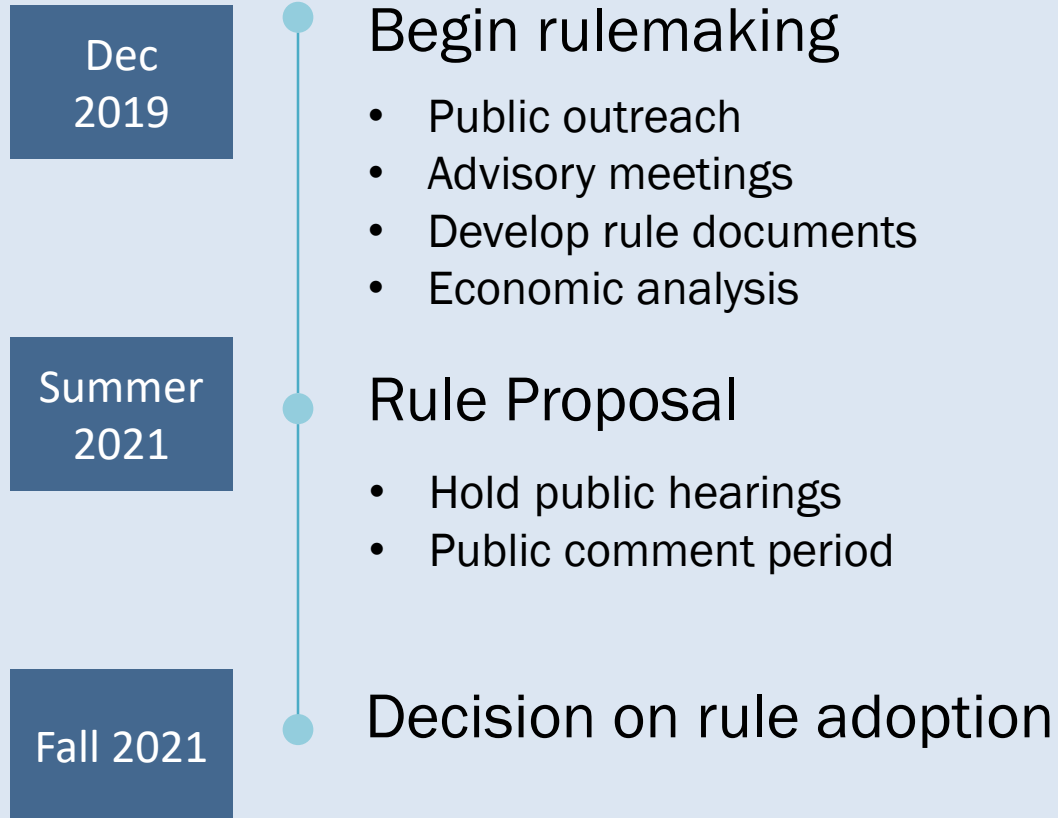
# Science Advisory Group

- Seeking members for science advisory group:
  - **Expertise:**
    - Scientific background in **water quality** and **fish biology**
  - **Parameters of Interest:**
    - Fine sediment, fish habitat requirements, dissolved oxygen
  - **Focus:**
    - Methods used to characterize fine sediment and feasibility of implementation
    - Water quality and habitat requirements of early life stages of fish
    - Dissolved oxygen dynamics in lotic systems





# Rulemaking Timeline



# Announcements

- Sent out solicitations to key organizations for the science advisory group this week
- Sent out notice of a public webinar this week
- **Public webinar: October 8<sup>th</sup> at 2pm**
  - Introducing the rule and rule development
- Science advisory group dates:
  - Late October
  - November
  - Early December



# Questions

Email: [Bryson.finch@ecy.wa.gov](mailto:Bryson.finch@ecy.wa.gov)

