

Welcome

Connecting to Audio

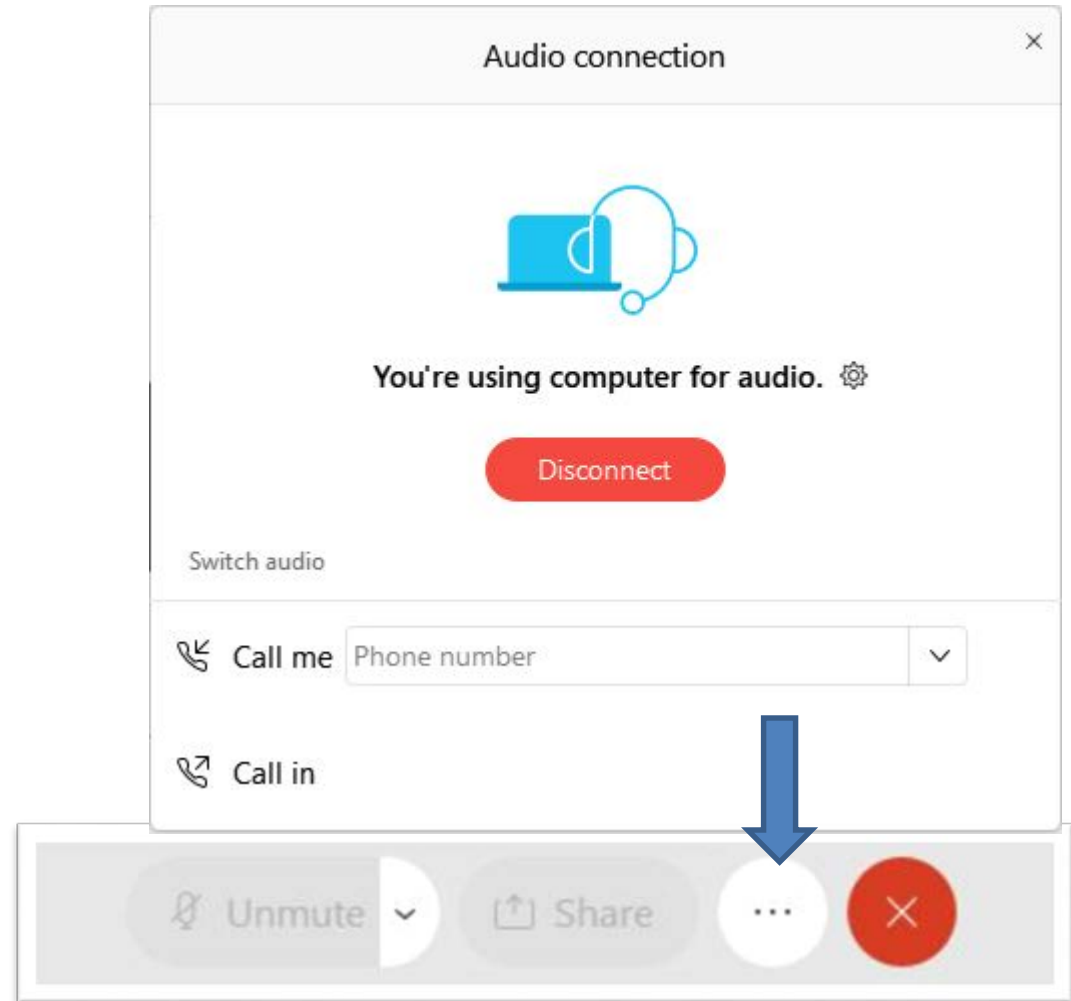
All lines are muted.

After joining the webinar, look for the 'Audio Connection' pop-up.

Join us by using either:

- Computer for audio
- Or Call into the webinar

Listen for periodic sound checks.



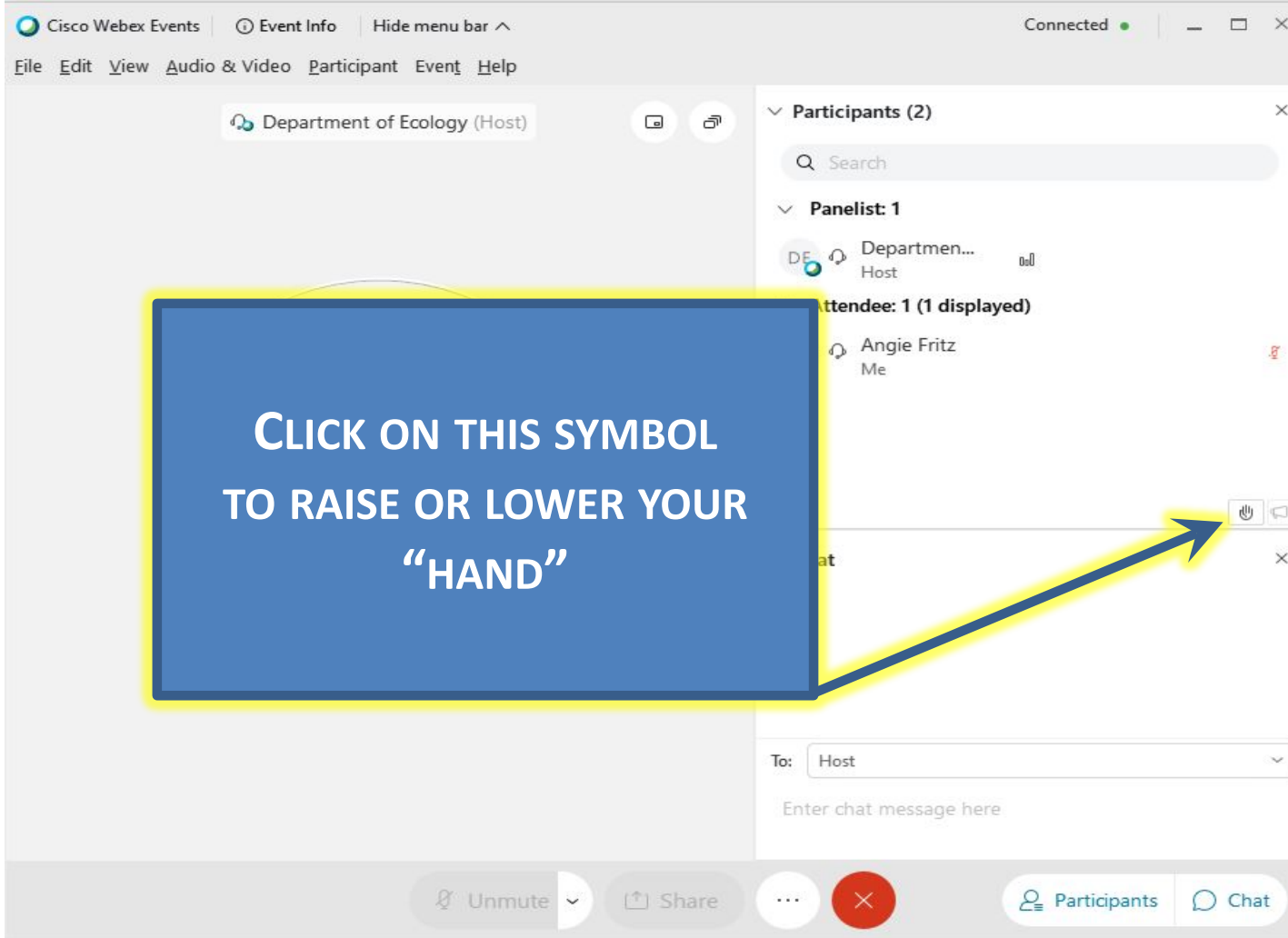
HOW TO PARTICIPATE WITH CHAT

The screenshot displays the Cisco Webex Events interface. At the top, there is a menu bar with options: File, Edit, View, Audio & Video, Participant, Event, and Help. The main area shows a video feed with a large 'DE' watermark. On the right side, there is a 'Participants (2)' panel listing 'Department of Ecology (Host)' and 'Angie Fritz (Me)'. A blue callout box with a yellow border is overlaid on the interface, containing the text: 'CLICK ON THIS SYMBOL TO OPEN THE CHAT BOX'. A blue arrow points from the bottom right corner of this callout box to the 'Chat' icon in the bottom right corner of the Webex interface. The 'Chat' icon is a speech bubble with a plus sign inside. Below the callout box, there is a chat input area with a 'To:' dropdown set to 'Host' and a text input field labeled 'Enter chat message here'. At the bottom of the interface, there are several control buttons: 'Unmute', 'Share', a red 'X' button, and 'Participants' and 'Chat' buttons.



Technical difficulties? Use the chat box or email Chanele.Holbrook@ecy.wa.gov

RAISING YOUR HAND TO PARTICIPATE



The screenshot shows the Cisco Webex Events interface. At the top, there is a menu bar with options: File, Edit, View, Audio & Video, Participant, Event, and Help. The main window displays the host's name, "Department of Ecology (Host)", and a list of participants. The participants list includes "Panelist: 1" (Department of Ecology, Host) and "Attendee: 1 (1 displayed)" (Angie Fritz, Me). A blue box with white text is overlaid on the screen, pointing to a hand-raising icon in the bottom right corner of the main window. The text in the box reads: "CLICK ON THIS SYMBOL TO RAISE OR LOWER YOUR 'HAND'".

CLICK ON THIS SYMBOL
TO RAISE OR LOWER YOUR
"HAND"



Technical difficulties? Use the chat box or email Chanele.Holbrook@ecy.wa.gov

Water Quality Partnership December 10, 2020

Welcome - Introductions & Program Updates	Vince McGowan	1:00 – 1:10
Legislative & Budget	David Giglio Rebecca Pittman	1:10 – 1:30
Permit Fee Rulemaking	Rebecca Pittman	1:30 – 1:45
Watershed Management Update	Melissa Gildersleeve	1:45 - 2:00
Voluntary Clean Water Guidance for Ag	Ben Rau	2:00 – 2:20
General Permit Updates	Nate Lubliner	2:20 – 2:35
Overview of Partnership Survey	Colleen Keltz	2:35 – 2:40
Roundtable	All	2:40 – 2:55
Wrap Up – Future agenda topics	Vince McGowan	2:55 – 3:00

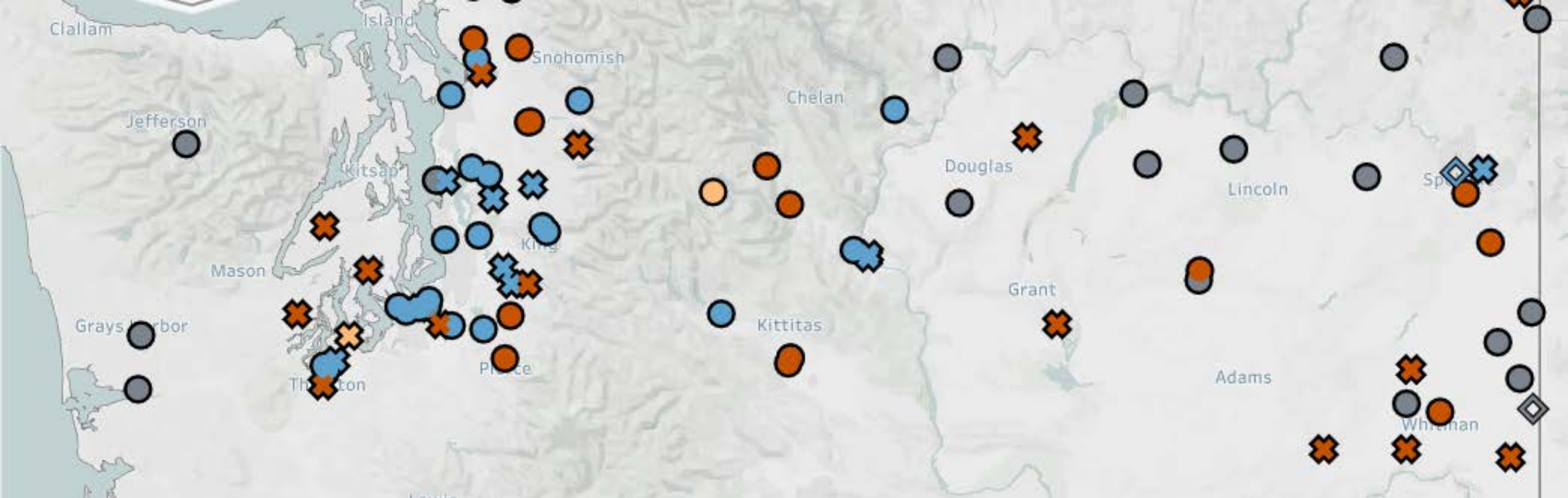




Program Updates

Vince McGowan





Legislative & Budget Updates

David Giglio & Rebecca Pittman



Permit Fee Rulemaking

Rebecca Pittman





Watershed Management Updates

Melissa Gildersleeve

Litigation Update (non-permit)

- **Section 303(d)**
 - TMDL work
 - 303(d) water quality assessment
- **319/CZARA**
- **Aquatic Life Criteria**
- **Human Health Criteria**



Water Quality Assessment update

- Finishing up the final technical work and doing QA work on the automation tool and results.
- Internal and tribal review early next year with the goal of starting the formal public review in April of 2021.

GOAL: Submittal to EPA early fall 2021





Voluntary Clean Water Guidance for Ag

Ben Rau





General Permit Updates

Nate Lubliner





General Permit Fact Sheet display



Overviews of Partnership Survey

Colleen Keltz



Survey Summary

Thank you to everyone who took the survey

- 25% response rate
- 84 listserv subscribers, 21 responses

Overview

- Majority of responses encouraged us to build participation/expand attendees
- Establish regular meeting schedule, keep length
- Continue to provide WQ updates
- Use more visuals
- More interactive meeting formats
- Desire to provide early input, policy insights, decision making



What we heard

Easy adjustments

- Regular meeting schedule. Propose 3rd Thursday of the month, 2 hours, 10am - Noon
- Increase use of visuals / handouts
- Encourage diverse representation
- Put a call out on the general WQ info listserv and other targeted listservs to 'advertise' the partnership.
- Ask: encourage others in your network to participate.

We also heard

- More deep dives
- More interaction and discussion
- Presentations from organizations other than Ecology
- Opportunities to help guide decision-making, be involved in policy decisions early on
- Updates on process improvement





Wrap Up

Vince McGowan

