



Recycling Development Center Advisory Board Meeting

March 8, 2023 | 9am – 12pm (Pacific time)

Welcome Activity:

What are you looking forward to this Spring?

- We are going to use Mentimeter.com to live populate a word cloud. Everyone can participate.
- There are two ways you can participate:
- Click on the link in the chat or if you want to use your phone take a picture of this QR code and it will also get you there.
- <https://www.menti.com/alkfffah3f4w>





AGENDA

9:00 am Welcome

9:10 am Board and Agency Updates

10:00 am Legislative Update

10:15 am Break

10:30 am Presentations

11:45 am Wrap-up

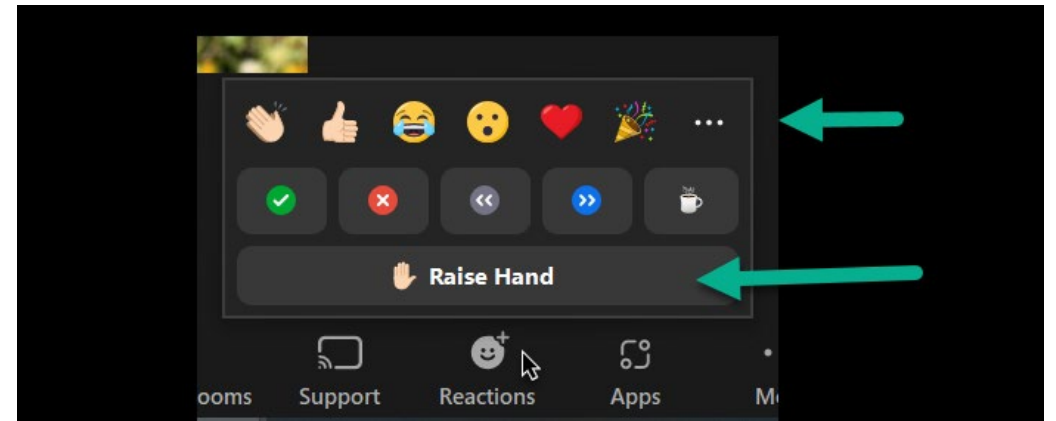
Participating in this meeting:

Roles

- Host-Caleb
- Facilitator-Mya
- Note taker/chat monitor-Tina

Rules

- Cameras On
- Board members and presenters may unmute themselves.
- Questions, please raise your hand or type them in the chat box.
- I will call on you or I can read your question from the chat.
- Use reactions to keep it interactive





AGENDA

9:00 am Welcome

9:10 am Board and Agency Updates

10:00 am Legislative Update

10:15 am Break

10:30 am Presentations

11:45 am Wrap-up



Center updates

Board members

Commerce

Ecology

- NextCycle Washington
- Commodity data, UW Study, Glass Summit
- Subcommittee ranking tool



Board roundtable:

What is your biggest pet peeve item you can't recycle?

What's your favorite TV show you are watching right now?

Board roundtable:

Natalie Caulkins



Scott Morgan



Sam Dart



Chris Piercy



Corinne Drennan



Mike Range



Karl Englund



Tim Shestek



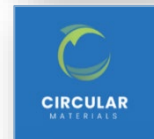
Kyla Fisher



Jay Simmons



Allen Langdon



Jon Smieja



Kris Major



Heather Trim



AGENCY UPDATES

Rob Duff



Washington State
Department of
Commerce

Kara Steward



DEPARTMENT OF
ECOLOGY
State of Washington



FIRST NEXTCYCLE WASHINGTON PITCH SHOWCASE IN MARCH PRESENTS EXCITING PROJECTS ACROSS WASHINGTON

REGISTRATION FOR THE PITCH SHOWCASE NOW OPEN



Join us on March 23rd for the first NextCycle Washington Pitch Showcase on the University of Washington Seattle campus. This event is the culmination of the NextCycle Circular Accelerator program and features 14 teams made up of entrepreneurial businesses, non-profits, and community organizations. These teams have received six months of circular economy business and technical support, mentoring, and planning to accelerate their project to a stage ready for investment and implementation.



Awardee Location

This map shows where selected team applicants are located. Four out of state projects were selected:

California: GeerGarage (statewide focus) and Okapi Reusables (Seattle focus)

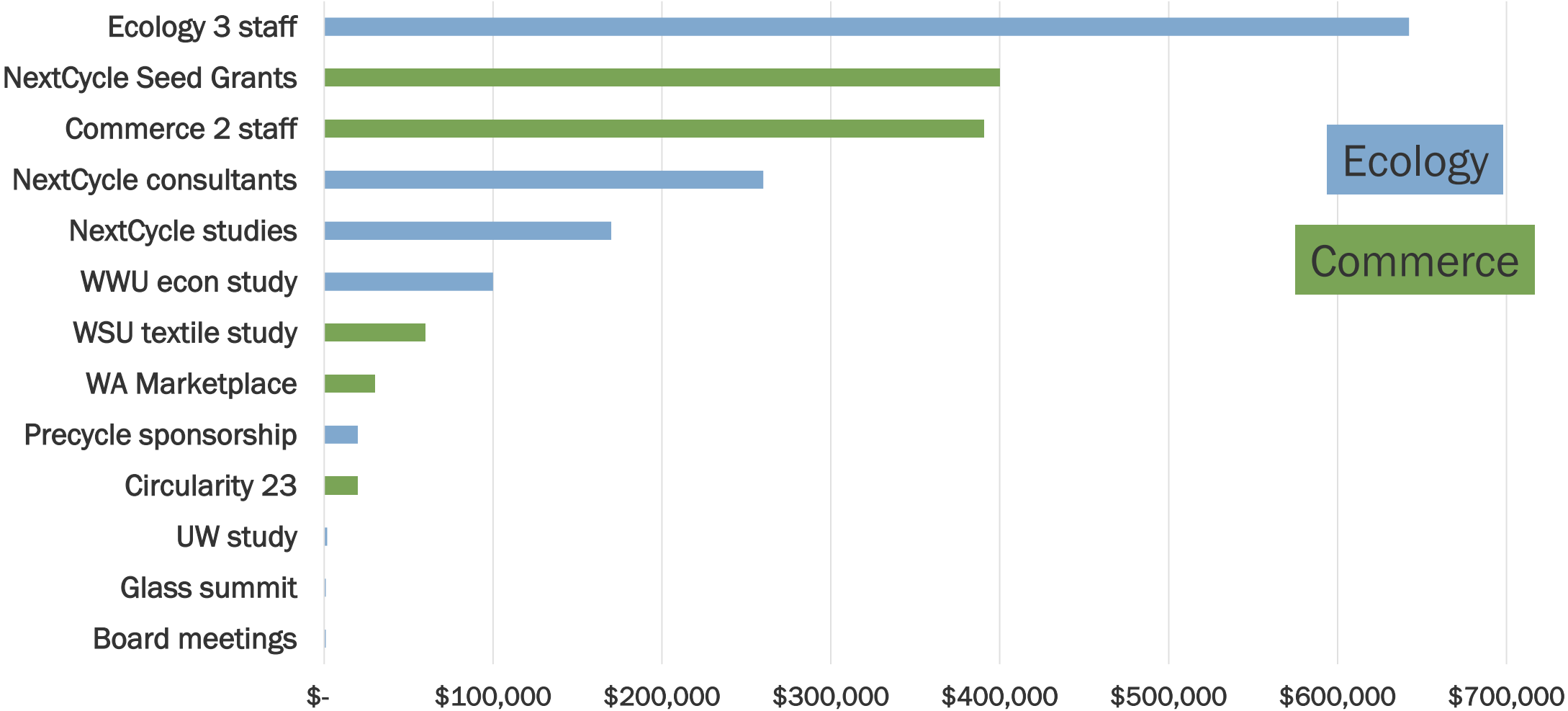
Hawaii: Simonpietri (King County Focus)

Virginia: Glass Packaging Institute (Tri-cities Focus)

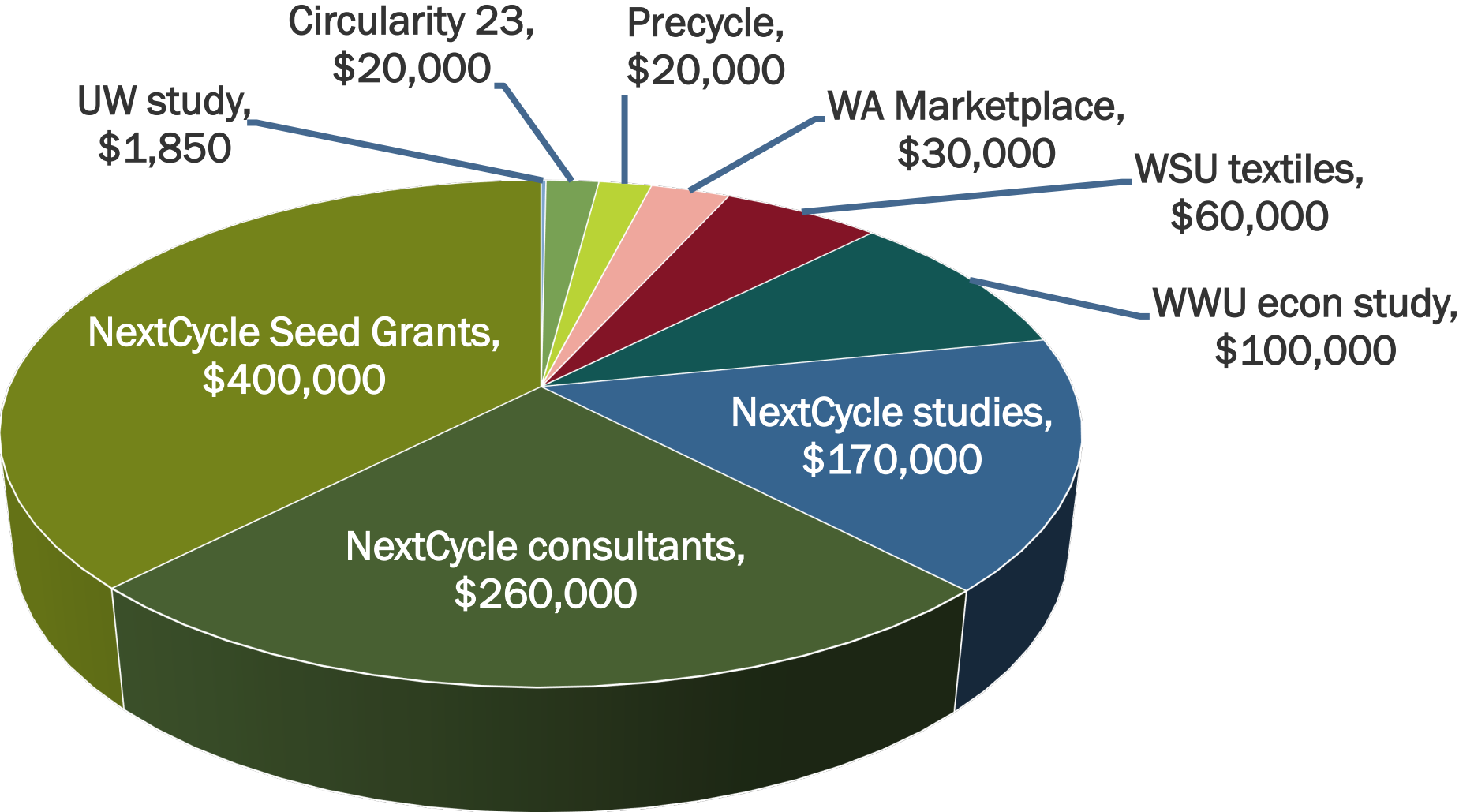
- = One Applicant
- = Multiple Applicants



RDC Resources 2021-2023



RDC Projects 2021-2023



RDC in 2023-2025

- Staff resources:
 - Research, data analysis
 - Board meetings
 - Business development

- Project funding
 - NextCycle Washington



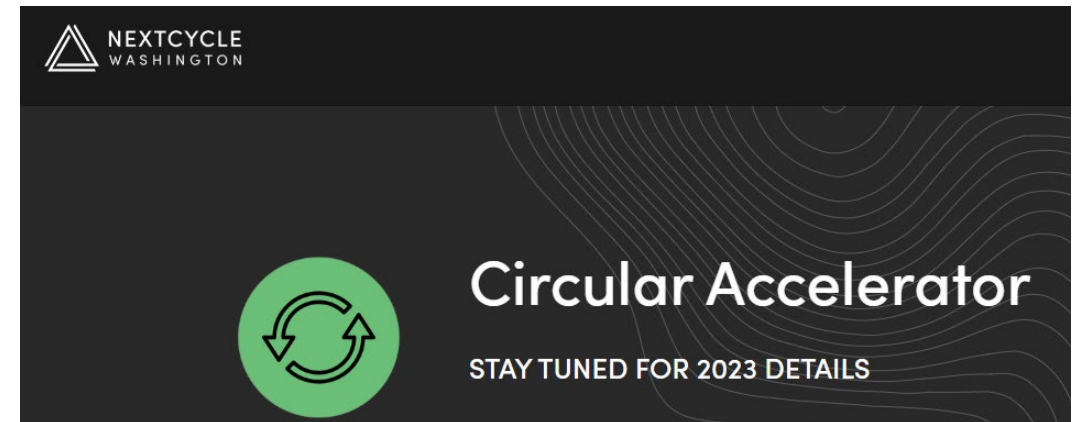
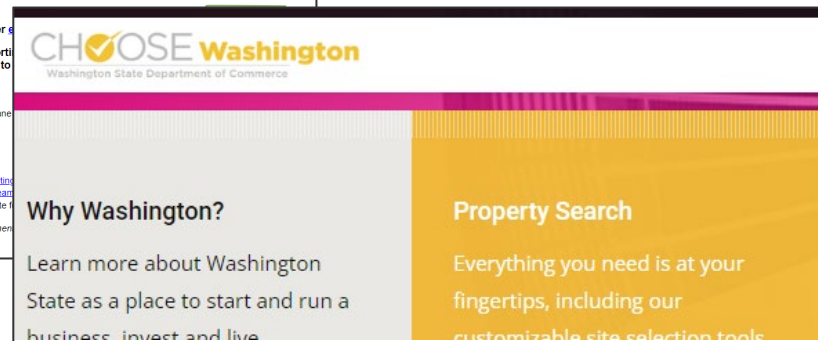
Plastic Packaging Recycling

This is the third report in the Recyclable Material Series prepared by the Recycling Development Center (Center) for its advisory board. The purpose of this report is to provide information on recycling markets in Washington State.

Plastic Overview

The many physical properties of plastics (e.g., low density, stability) allow their use extensively in manufacturing and for plastics is packaging, often used once and discarded.

China's 2018 National Sword policy substantially reduced the US and other countries. As a result, many curbside programs for recycling reduced plastic recycling activities in Washington. Consumer plastic packaging includes bags, bottles, thermoformed containers, and film. In Washington's 2021 Waste Characterization Study, plastic packaging accounted for 13.1 percent by weight of Washington's municipal solid waste, an increase from 11.4 percent in 2017 (more than half (7.4 percent)).²

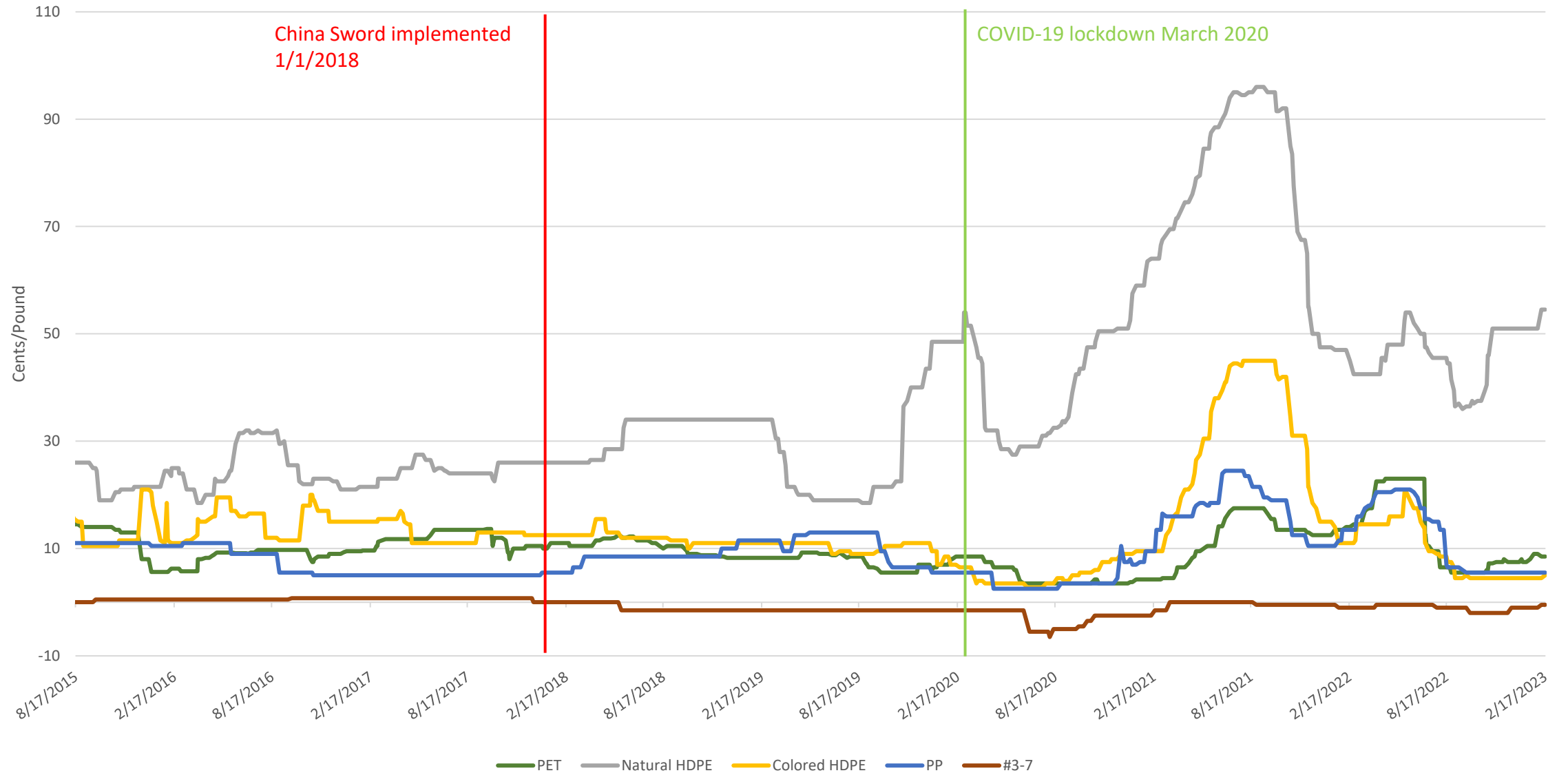


Recycling Commodity Prices

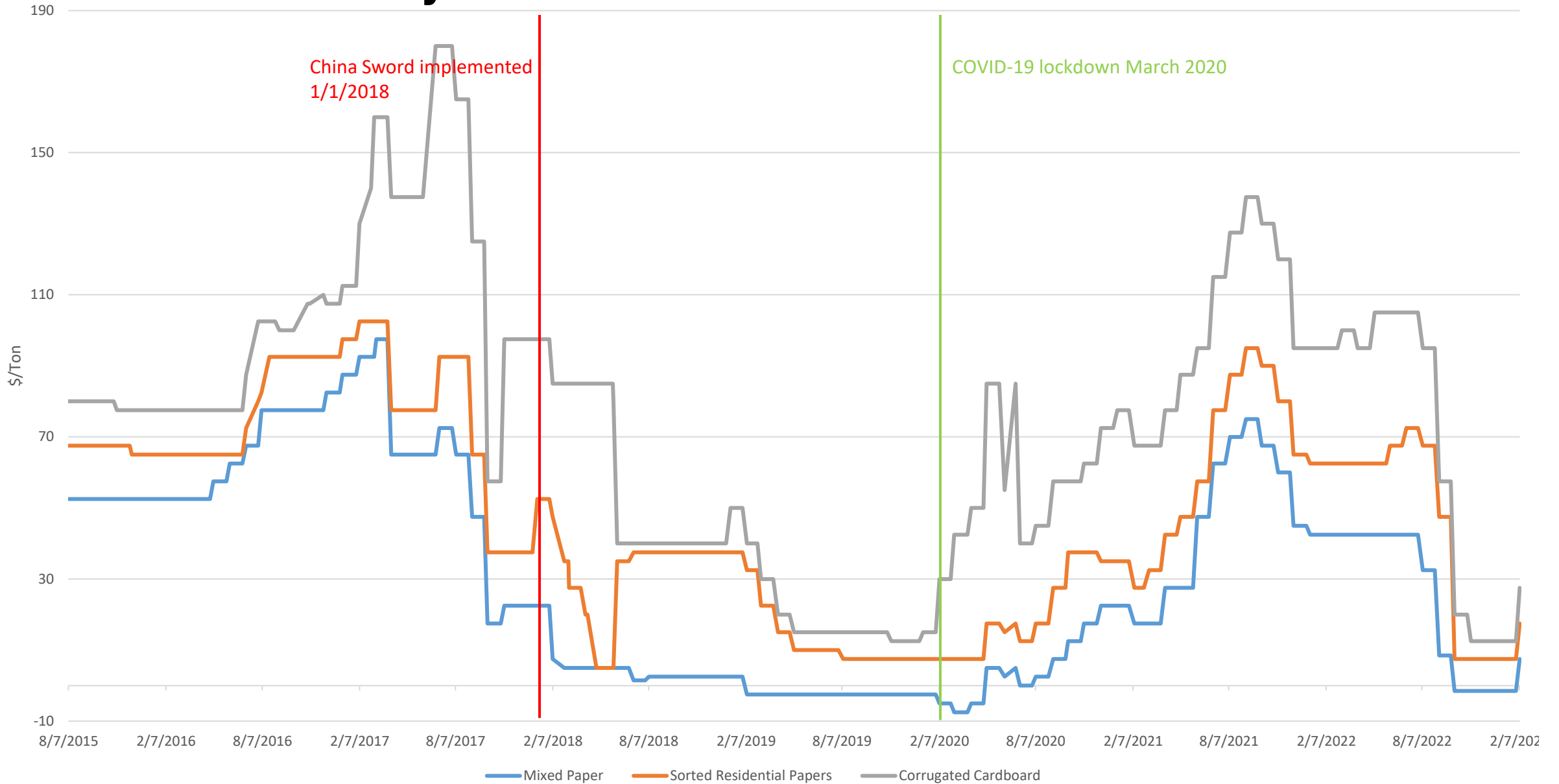
- [RecyclingMarkets.net](https://www.RecyclingMarkets.net)
- PNW Market Region 4
- Reflects prices of sorted and baled post-consumer materials



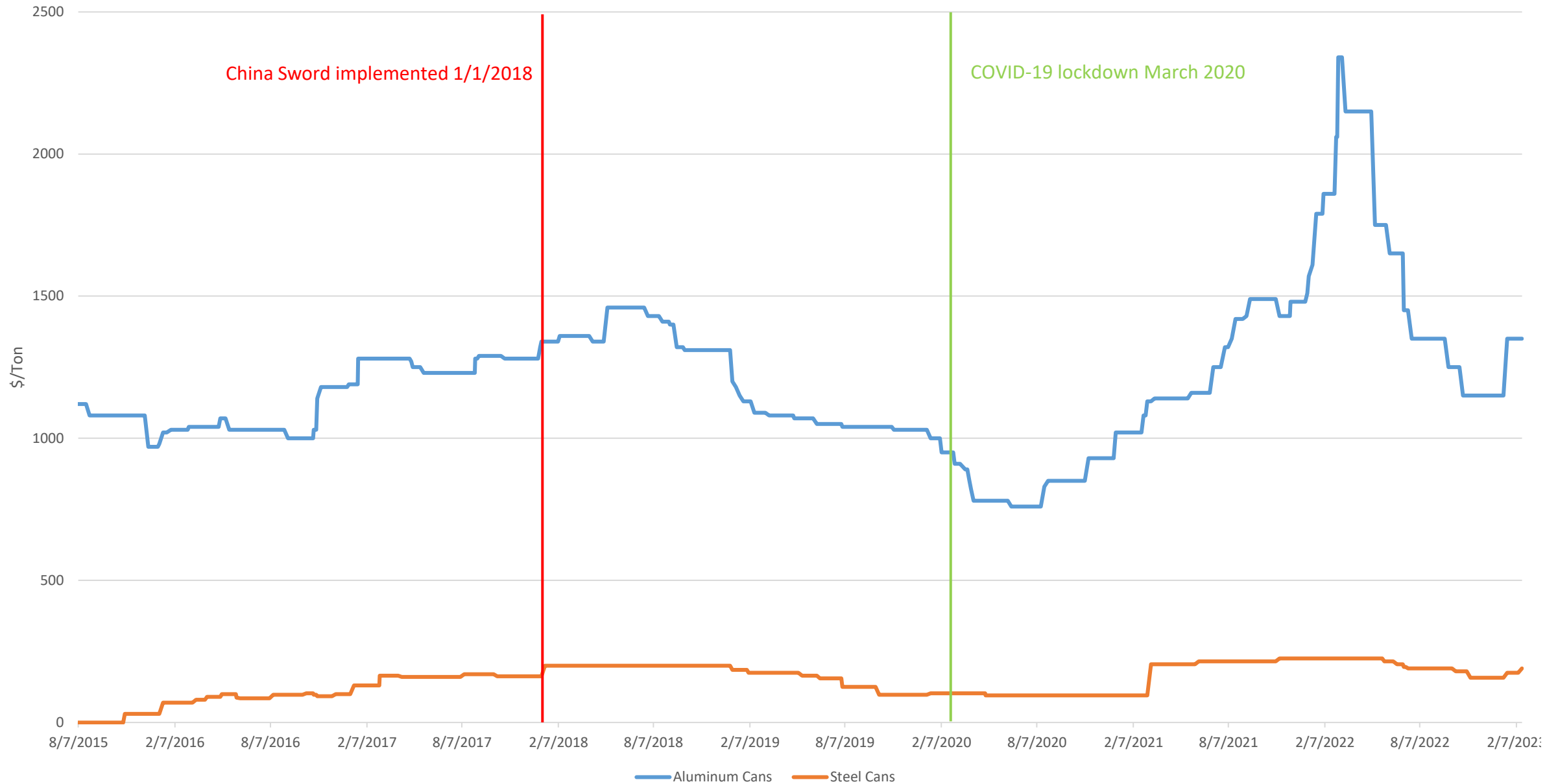
Recycled Plastic Prices in the PNW



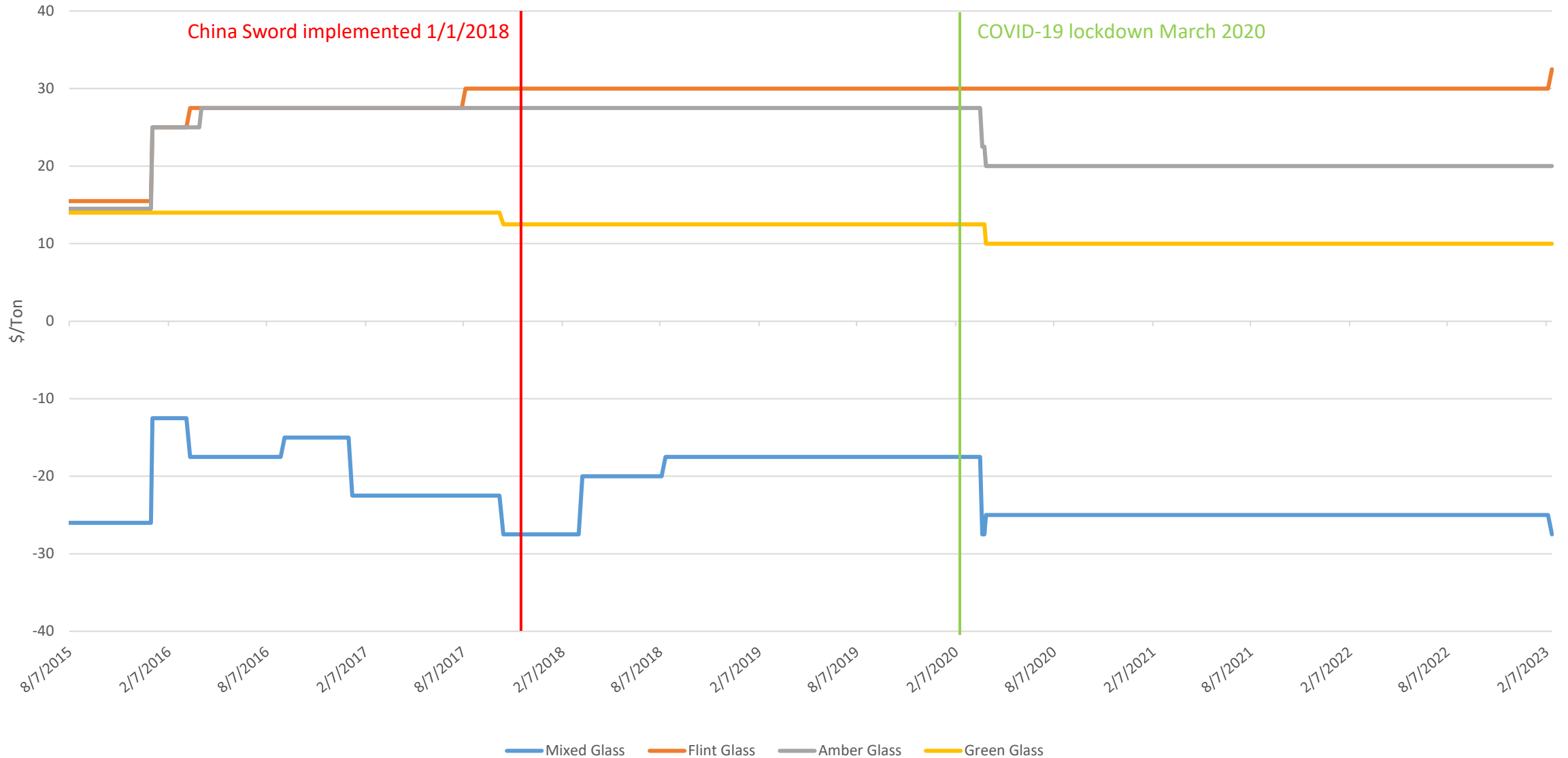
Recycled Fiber Prices in the PNW



Recycled Metal Prices in the PNW



Recycled Glass Prices in the PNW



University of Washington Evans School of Public Policy & Governance

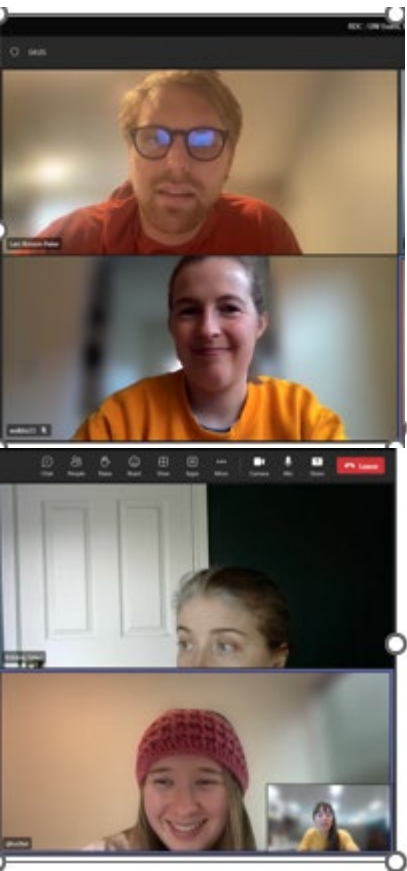
The purpose of this project is to help the Recycling Development Center (RDC) the **shape approach to using quantitative and qualitative data and metrics to inform the Center's contributions to recycling market development**. The consultants will gather details about how entities like the RDC have used information, data and metrics to make decisions or to further goals.

Research Activities

- Review relevant literature.
- Interview representatives from entities like the RDC and other related organizations.
- Summarize interview findings.
- Provide recommendations based on those findings.

Deliverables

- A final written report including the information set forth in the project description, and
- A virtual presentation to Ecology Solid Waste program staff and Recycling Development Center advisory board.



Glass Summit Wednesday May 3, 2023

Please join us on May 3rd for the Eastern WA Glass Summit. [Registration is now open](#) through Eventbrite.

- **When:** Wednesday May 3, 2023, 9:00-4:00 pm PST
- **Where:** Ecology's Central Regional Office, 1250 West Alder Street, Union Gap, WA

We are looking forward to convening the wide variety of folks interested in discussing better management opportunities for glass containers in Eastern WA.

If you have any issues with the ticket or registration process, and if you have any accessibility needs, I can assist with (language interpretation, parking, etc.) reach out to Mya mya.Keyzers@ecy.wa.gov.

[Eastern Washington Glass Summit Tickets, Wed, May 3, 2023 at 9:00 AM | Eventbrite](#)

Subcommittee prioritization tool

Background

- This quasi quantitative tool was developed to give the Center a way to rank project ideas against the legislative mandate.
- **Why do we need a priority tool:** RDC resources are thin, our financial resources will be committed in the coming year to NextCycle (including Tina’s time and available contracting resources). The remaining RDC resources are staff time – Kara, Mya, Rob, Kirk
- **Why we need a screening process:** with the number of areas where we can focus our resources, we’d like to make strategic choices in the use of resources.

	HLOOKUP value	1.80	1.90	2.60	1.60	2.00	1.90	1.60	2.80	1.90	1.80	2.60
		directory of all players involved, directly, indirectly with WA circular economy	map of business, non-profits, tribes, institutions in the circular economy of WA	grant program to support circular economy growth	eastern wa glass summit	wsu textile pilot project	Textile industry research, CE business list	Update the recyclable materials papers – current data, business analysis – expand to more	nextcycle wa	category and do a deep dive into the services - like textiles. do our own calls and data collection. and then do	community cluster map	precycle challenge
Criteria on a scale 0-3												
1.0 Builds the circular economy community (Involves outreach, engage, communicate, partner, convene, facilitate to assist and improve market development (Ecy 1 & BG A1-5))		3	3	2	2	2	2.5	2	2.5	2.5	1.5	2
2.0 Invests/builds circular economy (Increase material for circular end use (LM3c & BG Metrics1-4)) Provide grants for recycling markets (LM3g & BGC1-5))		1.5	1.5	3	1	1.5	1	1	3	1	1.5	3
3.0 Provides positive environmental impact (reduces GHG emission (Ecy goal 2)) diverts material from landfill)		1	1	3	1.5	2	1	1	3	1	1	3
4.0 Support equitable economic growth (Ecy goal 1 & board goals 2) (Focuses on/supports vulnerable or overburdened communities/businesses) Builds on business – grants, tax incentives, low interest loans)		1	1.5	3	1	2	2	1	3	2	2	3
5.0 Increases knowledge/data (Research into markets, data, infrastructure, policy analysis (LM3d & BG B1-5) Obtain and disseminate information relating to market development (LM3e) Support, promote, and identify research and development to stimulate new technologies and products (4c) could connect to goal 3)		2.5	2.5	2	2.5	2.5	3	3	2.5	3	3	2
		1.80	1.90	2.60	1.60	2.00	1.90	1.60	2.80	1.90	1.80	2.60

Matrix Subcommittee

- Two subcommittee meetings, criteria has gone from 10 to 5.
- Updated Matrix to share with the Board has been posted to the EZ page.
https://www.ezview.wa.gov/Portals/_1962/Documents/rdcab/EZ-CenterPriorityDecisionMatrix.xlsx
- It is still under construction. Next up is adding some weighting.
- We need new project ideas to test with so put on your brainstorming caps and think about RDC projects for 2023-25

Brainstorming a word cloud:

What are some project ideas for the Center?

- We are going to use Mentimeter.com to live populate a word cloud. Everyone can participate.
- There are two ways you can participate:
- Click on the link in the chat or if you want to use your phone take a picture of this QR code and it will also get you there.
- <https://www.menti.com/al84gf475sug>





AGENDA

- 9:00 am Welcome
- 9:10 am Board and Agency Updates
- 10:00 am Legislative Update
- 10:15 am Break
- 10:30 am Presentations
- 11:45 am Wrap-up



Legislative Update

Julie Robertson – Ecology – Solid
Waste Management Program
Legislative Coordinator





DEPARTMENT OF
ECOLOGY
State of Washington

Legislative Update

Julie Robertson

March 8, 2023

- House of Origin: March 8
- Policy Committee: March 29
- Fiscal Committee: April 4
- Opposite House: April 12
- Sine Die: April 23



ESHB 1033

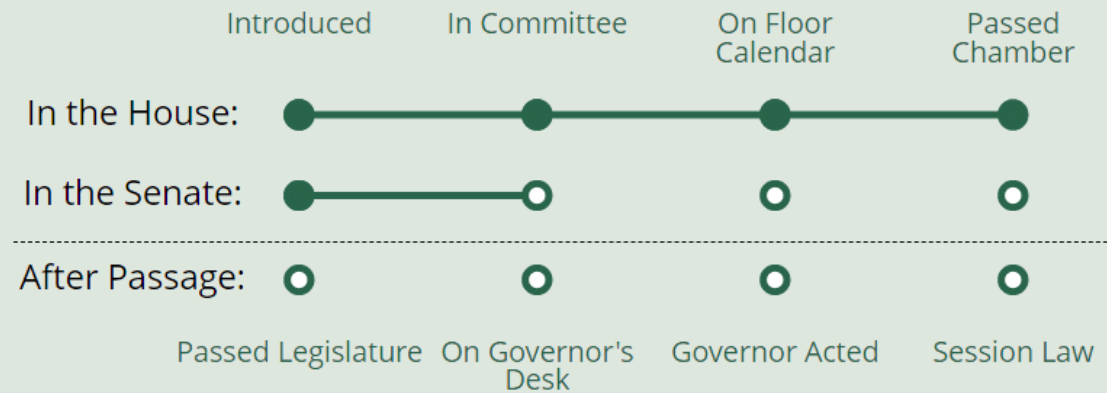
Evaluating compostable product use in Washington



Current Version:
Engrossed Substitute - ESHB
1033

Current Status:
SEnvironment, E

Where is it in the process?



SHB 1085 - Reducing plastic pollution



2SHB 1131 - Improving Washington's solid waste management outcomes

There's a solution in the WA Legislature for our growing trash problem

Feb. 26, 2023 at 12:01 pm

By Liz Berry
Special to The Times



SHB 1185 - Reducing environmental impacts associated with lighting products



2SSB 5144 - Responsible environmental management of batteries

The complicated process of recycling batteries in Washington state

As we use more batteries in our daily lives, our ability to dispose of them will struggle to keep up.

by Hannah Weinberger / September 23, 2022



Alkaline batteries are separated and dumped into a bin at the North Seattle Hazardous Waste site, where people can drop off everything from car batteries to lithium-ion batteries, on Monday, Sept. 19, 2022. Washington lawmakers, increasingly concerned over the number of batteries in use, are continuing a decade-old effort to create a formal battery stewardship program both in Washington and in King County. (Amanda Snyder/Crosscut)

State Senate Unanimously Passes Wind Turbine Recycling Bill Sponsored by Sen. Jeff Wilson

SB 5287 - Study on the recycling of wind turbine blades



Wind turbine blades, roughly 220-feet in length, are pictured at the Skookumchuck Wind Project near Rainier in this 2020 Chronicle file photo.

- **E2SHB 1392** - Fair servicing and repair
- **SSB 5178** - Large Debris Clean up
- **SSB 5245** - Biosolids



- **SHB 1138 - Drought preparedness**
- **E2SHB 1170 - Improving climate resilience**
- **HB 1322 - Walla Walla water 2050 plan**

▶ **2023 Ecology proposed legislation**

The Washington Legislature has entrusted us to address the challenging and complex environmental issues affecting Washington. Families, farms, fish, and forests depend on clean water, clean air, and a healthy ecosystem to thrive. Our 2023 proposed legislation prioritizes reducing climate impacts for those most at-risk and with the least capacity to respond.

Learn more about our priorities



**Climate
resiliency**



**Drought
response**



**Walla Walla
river basin**





Thank You!

Contact:

Julie Robertson

Julie.Robertson@ecy.wa.gov

Questions?



Let's take a 10 minute break





AGENDA

9:00 am Welcome & review meeting goals

9:10 am Board and Agency Updates

10:00 am Legislative Update

10:15 Break

10:30 am Presentations

11:45 am Wrap-up



Presentations & Discussion

Natalie Caulkins – Republic Services

Allen Langdon – Circular Materials

Kevin Kelly - Ridwell



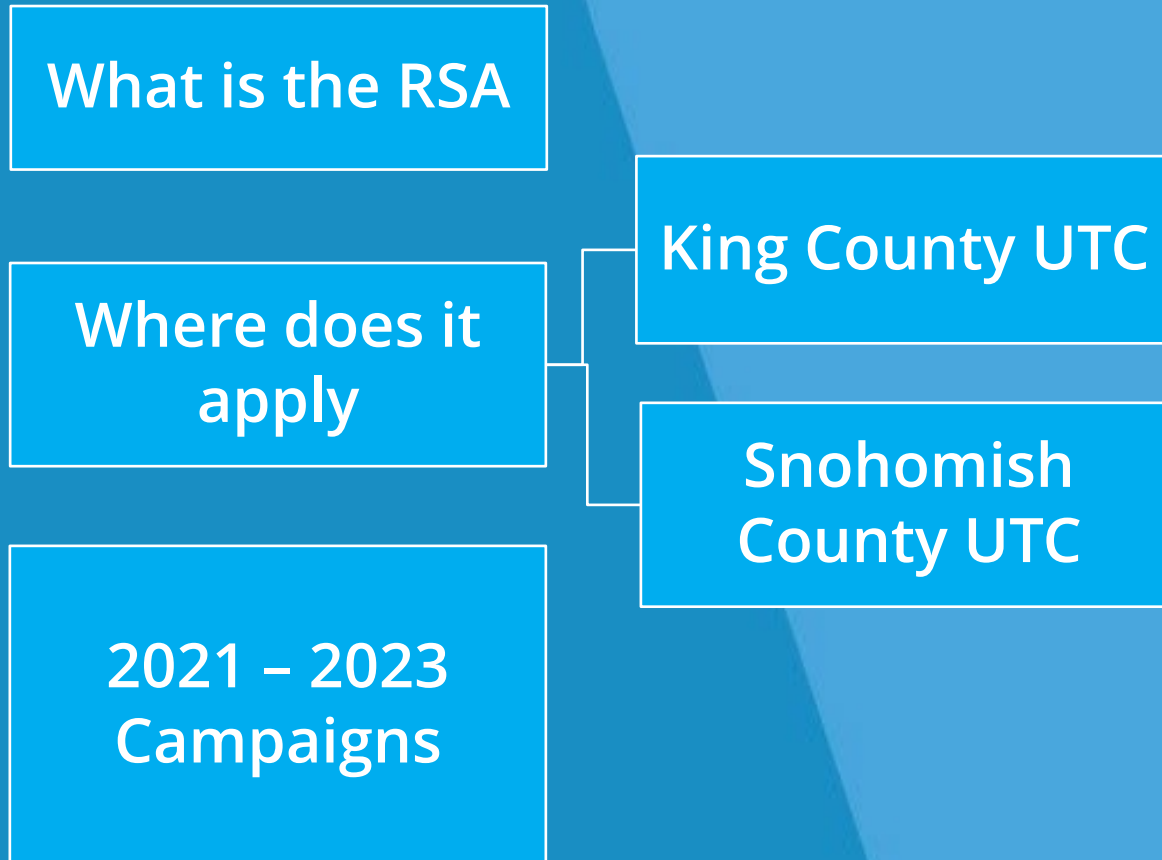


Republic Services

Natalie Caulkins – Recycling Coordinator



REVENUE SHARE AGREEMENT (RSA)



Revised Code of Washington (RCW) Chapter 81.77.185

The screenshot shows a web browser displaying the Washington State Legislature website. The address bar shows the URL: app.leg.wa.gov/RCW/default.aspx?cite=81.77.185. The page header includes the Washington State Legislature logo and a search bar. The main content area displays the following information:

RCWs > Title 81 > Chapter 81.77 > Section 81.77.185

81.77.180 << 81.77.185 >> 81.77.190

RCW 81.77.185

Recyclable materials collection—Revenue sharing—Report.

(1) The commission shall allow solid waste collection companies collecting recyclable materials to retain up to fifty percent of the revenue paid to the companies for the material if the companies submit a plan to the commission that is certified by the appropriate local government authority as being consistent with the local government solid waste plan and that demonstrates how the revenues will be used to increase recycling. The remaining revenue shall be passed to residential customers.

(2) By December 2, 2005, the commission shall provide a report to the legislature that evaluates:

- (a) The effectiveness of revenue sharing as an incentive to increase recycling in the state; and
- (b) The effect of revenue sharing on costs to customers.

[2010 c 154 § 3; 2002 c 299 § 6.]

NOTES:

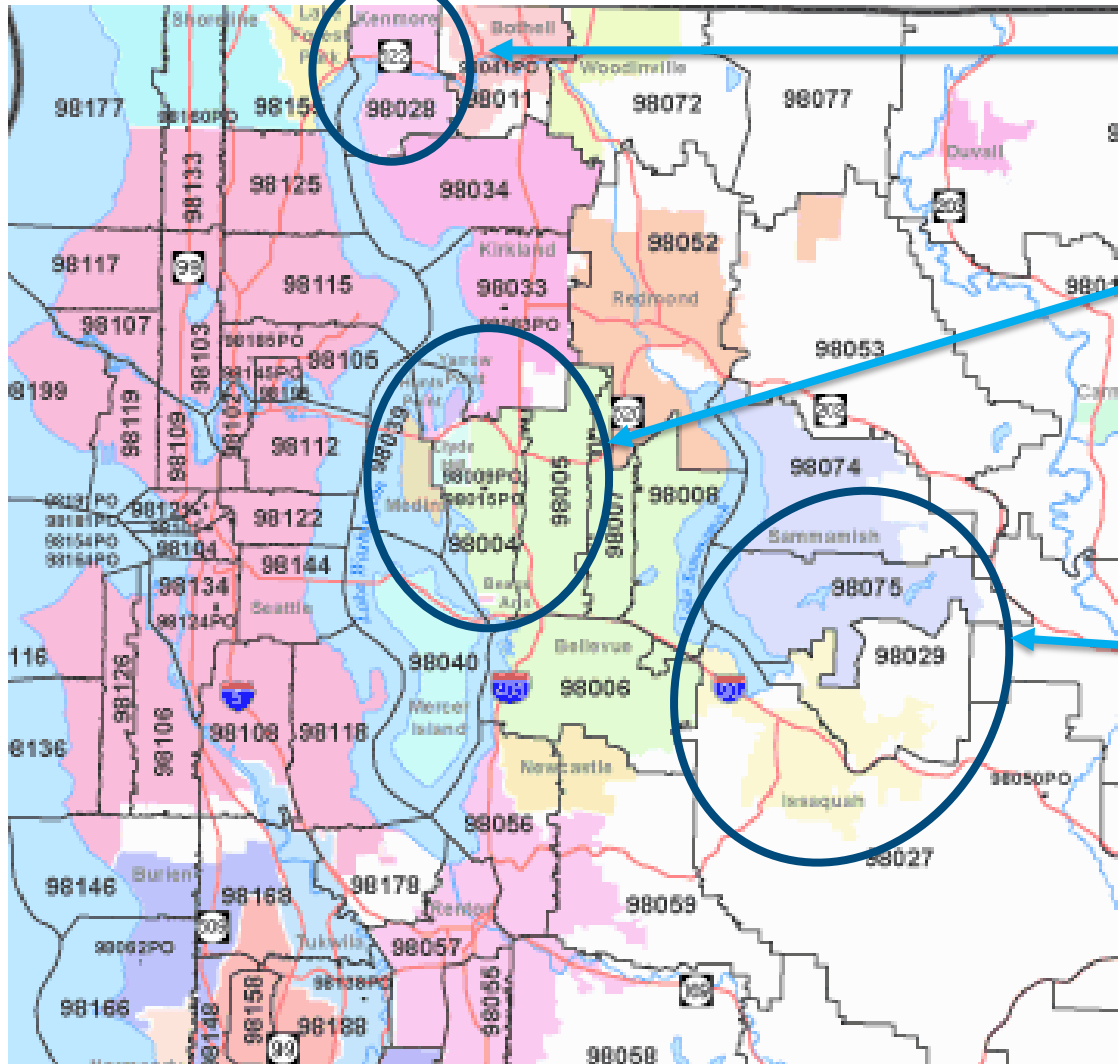
Intent—Scope of authority—2010 c 154: See notes following RCW 70A.205.040.

Established 2002; Increased revenue from 30% to 50% in 2010

“The commission shall allow solid waste collection companies collecting recyclable materials to retain up to fifty percent of the revenue paid to the companies for the material if the companies submit a plan to the commission that is certified by the appropriate local government authority as being consistent with the local government solid waste plan and that demonstrates how the revenues will be used to increase recycling. The remaining revenue shall be passed to residential customers.”

Bottom Line: If we don't use these funds, we must return them to customers

UTC Areas – Bellevue Office

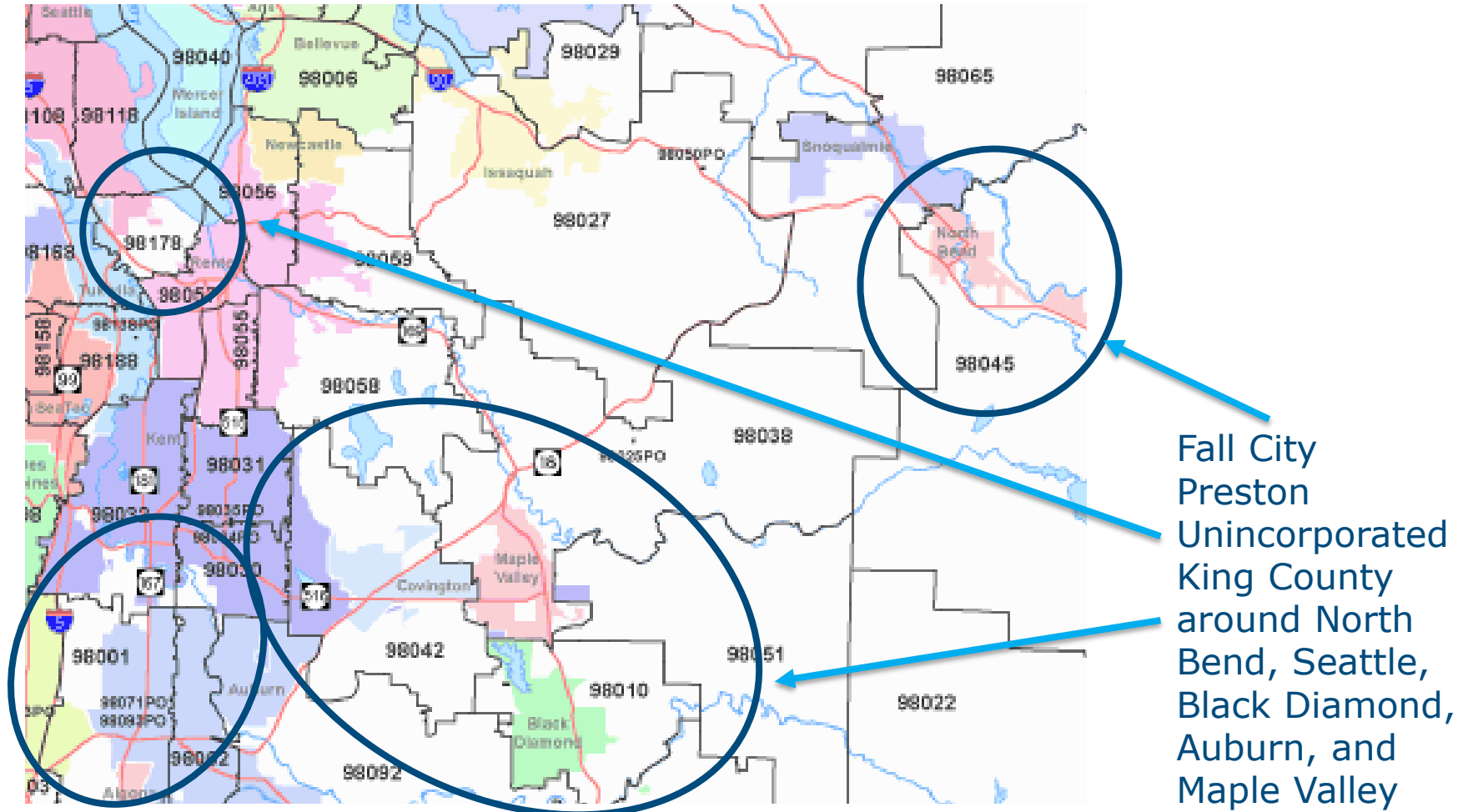


Kenmore

Beaux Arts
Hunts Point
Medina
Yarrow Point

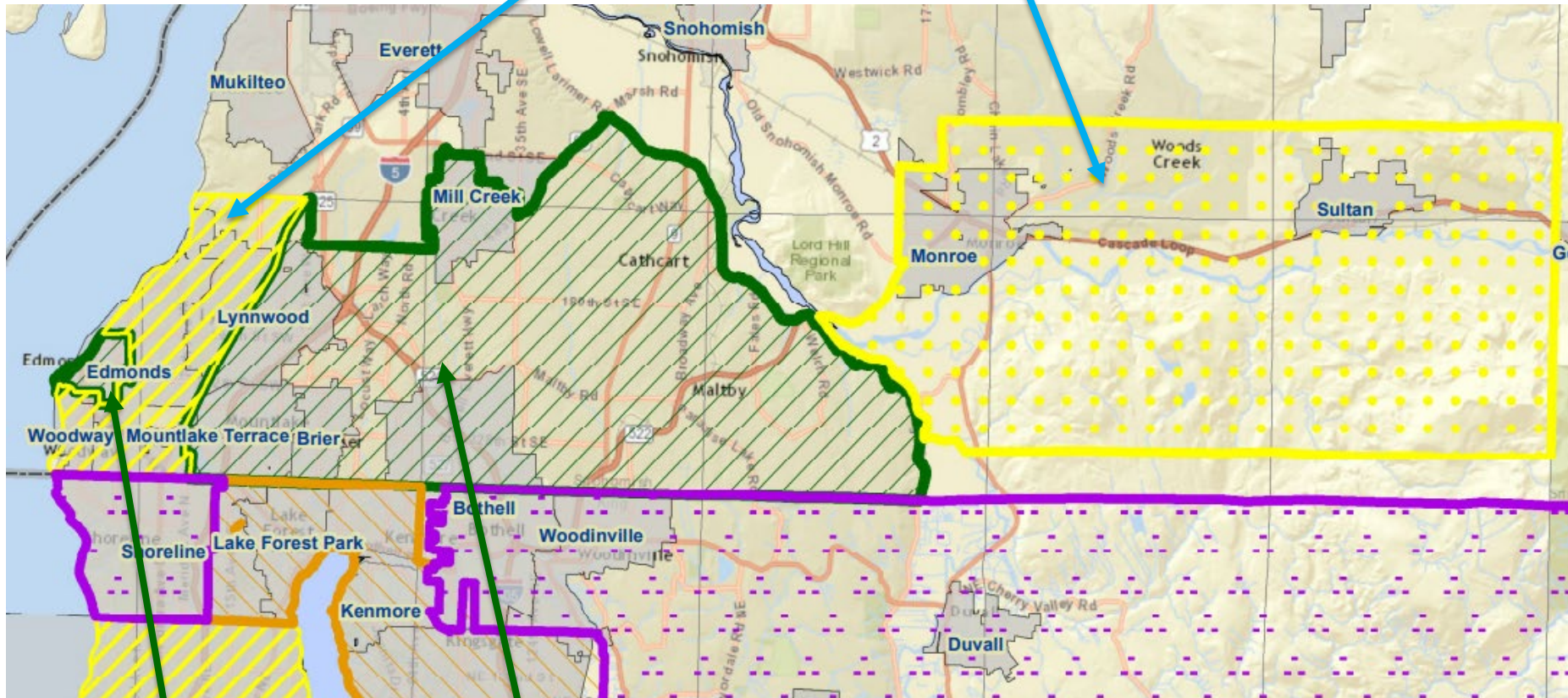
Klahanie (until formally
annexed)
Unincorporated King
County around Issaquah
& Snoqualmie

UTC Areas – Kent Office



UTC Areas – Lynnwood Office

- Unincorporated Snohomish County around Monroe and Sultan
- Parts of Edmonds and Lynnwood
- Woodway



Sound Disposal

Waste Management

Numbers at a Glance

King County UTC Areas	Snohomish County UTC Areas
<p>Single Family Outreach</p> <p>Total: 39,394 households Recycling Volume 2021-2022: 12,889 tons</p>	<p>Single Family Outreach</p> <p>Total: 19,637 households Recycling Volume 2021-2022: 546 tons</p>
<p>Multifamily Outreach</p> <p>Total: 110 properties, 3,870 units Recycling Volume 2021-2022: 536 tons</p>	<p>Multifamily Outreach</p> <p>Total: 286 properties, units tbd Recycling Volume 2021-2022: 93.77 tons</p>

2021-2023 Plan Campaigns

King County

Reduce Contamination

Increase Good Recycling

Custom Cart Tagging

Engage in Spanish

Multifamily Outreach

Reduce Contamination

PLASTIC BAGS & PLASTIC WRAP:

Keep 'em OUT of the recycling bin

It Matters.



PLASTIC BAGS AND PLASTIC WRAP—like what comes on paper towel rolls or air pillows for shipping—do not belong in your recycling bin.

Visit plasticfilmrecycling.org to find a recycling location near you, reuse plastic bags you already have or put them in the trash.

kingcounty.gov/recycle-right

Questions? Contact:
recyclinginfo@republicservices.com



NO PONGAS BOLSAS NI ENVOLTURAS DE PLÁSTICO EN EL BOTE DE RECICLAJE

Es importante.



LAS BOLSAS Y ENVOLTURAS DE PLÁSTICO, como en la que viene un rollo de toallas de papel o almohadillas de aire para envíos, no van en tu bote de reciclaje.

Visita plasticfilmrecycling.org (sitio web en inglés) para encontrar una ubicación de reciclaje cerca de ti, reúsa las bolsas de plástico que ya tienes o ponlas en la basura.

kingcounty.gov/reciclamos

Información de contacto:
recyclinginfo@republicservices.com



Consultant:
Cascadia Consulting

Audience:
Single Family

Goal:
Distribute this cart tag
to all ~40,000
households

Increase Good Recycling



Consultant:

Cascadia Consulting &
C+C

Audience:

Single Family

Goal:

Identify & engage with households where there are missed opportunities for recycling – 60 households on each of 43 routes

Custom Cart Tagging



Consultant:
Natalie Caulkins &
Madhuri Venkatasamy

Audience:
Single Family

Goal:
Take pictures of
contents before and
after cart tagging

Custom Cart Tagging



Consultant:
Natalie Caulkins &
Madhuri Venkatasamy

Audience:
Single Family

Goal:
Take pictures of
contents before and
after cart tagging

Custom Cart Tagging



Lessons Learned

- ❖ Cart tagging changes material stream
- ❖ Customers respond well to individualized messages & transparency
- ❖ Wealthier neighborhoods generally have less contamination

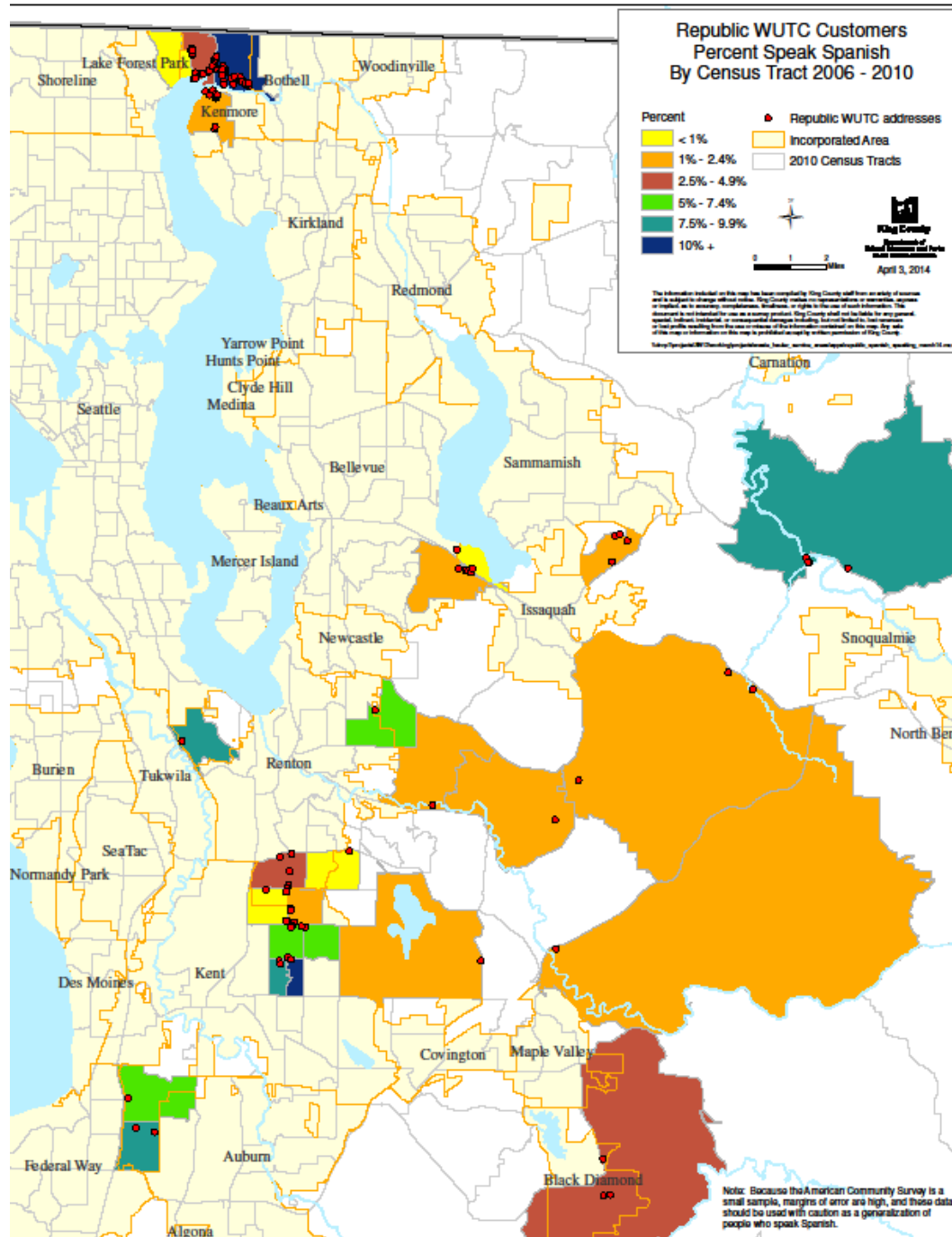
Custom Cart Tagging

Lessons Learned

- ❖ Cart tagging changes material stream
- ❖ Customers respond well to individualized messages & transparency
- ❖ Wealthier neighborhoods generally have less contamination



Engage in Spanish



Consultant:

C+C

Audience:

Single Family – Spanish speakers

Goal:

Survey Spanish-speaking households with missed opportunities for recycling & contamination progress



Multifamily Outreach

Consultant:
Natalie Caulkins &
Madhuri Venkatasamy

Audience:
Multifamily Customers

Goal:
Distribute bags, tags,
and door hangers;
update stickers at 12
properties





Multifamily Outreach

Consultant:

Natalie Caulkins &
Madhuri Venkatasamy

Audience:

Multifamily Customers

Goal:

Distribute bags, tags,
and door hangers;
update stickers at 12
properties

2021-2023 Plan Campaigns

Snohomish County

Contamination Audits

Back to Basics

Recycling in Schools

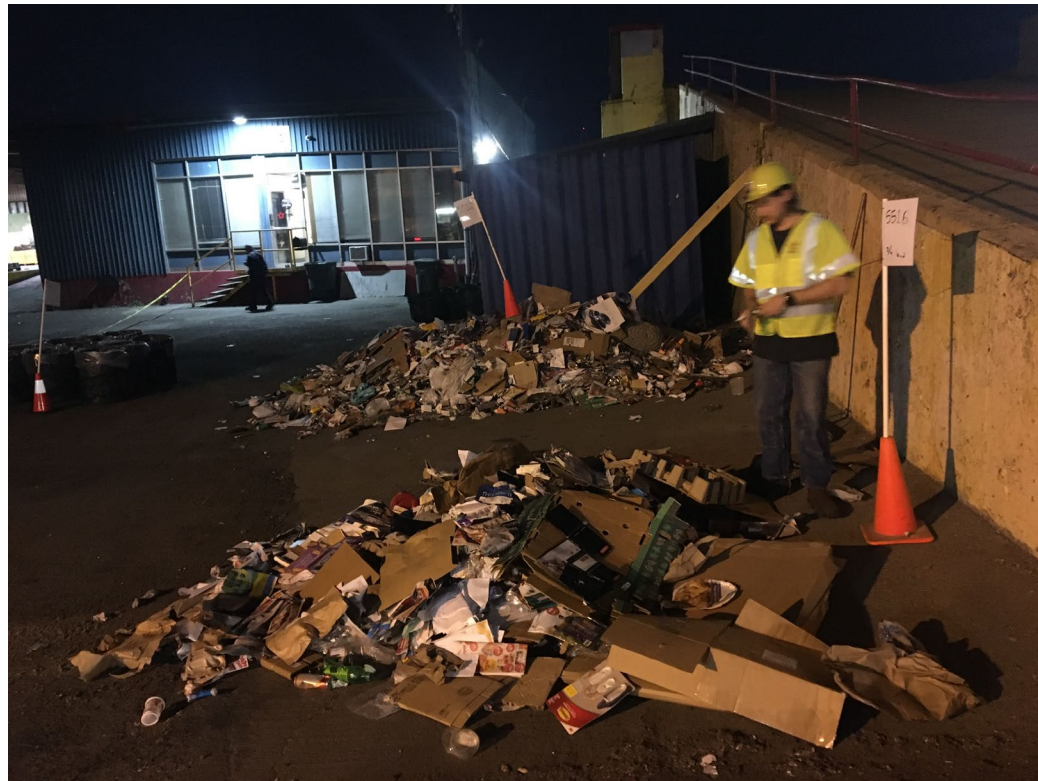


Contamination Audits

Consultant:
Resource Synergy

Audience:
Snohomish County
Solid Waste & cities

Goal:
Establish baseline
contamination rate to
inform SnoCo's CROP



Back to Basics

Please recycle these items:



PAPER

PLASTIC BOTTLES & JUGS

METAL CANS



CARDBOARD



GLASS



Empty. Clean. Dry.™

Please make sure your recyclables are empty, clean and dry before placing them in your recycling cart.

Email recyclinginfo@republicservices.com or visit RecyclingSimplified.com for more information about recycling.

RepublicServicesNW.com
425.778.0188



We'll handle it from here.®

Please do not recycle these items:



PLASTIC BAGS



POLYSTYRENE FOAM



TRASH



FOOD/
FOOD-SOILED PAPER



DIAPERS



PET WASTE

©2021 Republic Services, Inc.



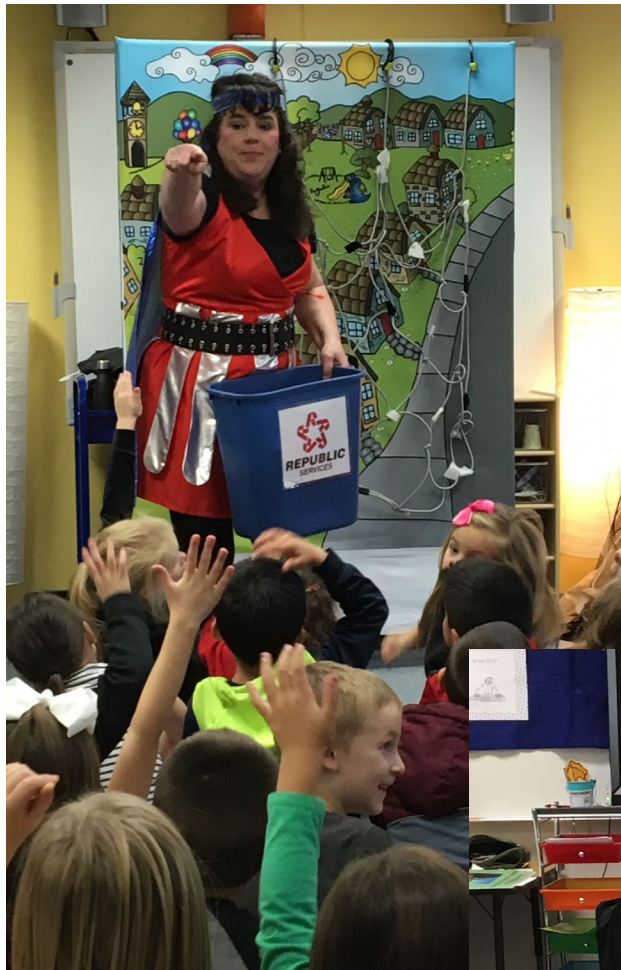
We'll handle it from here.®

Consultant:
Resource Synergy

Audience:
Single Family

Goal:
Distribute this
educational cart tag to
all 19,000 households

Recycling in Schools



Consultant:
Triangle Associates

Audience:
Kindergarten – High School

Goal:
Provide recycling events to all classes in all schools in RSA service area



Children from low-income families are often dependent on free or reduced lunch during the school year. They would miss this meal during summer without the Nourishing Network.



Even though this boy doesn't speak Spanish, he still enjoyed and appreciated his comic book.

Internships

Partner:
Sherwood Community
Services





REPUBLIC[®]
SERVICES

Sustainability in Action



Circular Materials

Allen Langdon – Chief Executive Officer





CIRCULAR
MATERIALS

Advancing the Circular Economy
Recycling Development Center Advisory Board

Allen Langdon, Chief Executive Officer

March 8, 2023

- Canadian not-for-profit producer responsibility organization created and governed by producers.

Full Service Offering to Support Producers:

- **Comprehensive compliance services** to support producers with meeting regulatory obligations.
- **National harmonization** of producer services and recycling supply chains to achieve scale and deliver efficiencies.
- **Return materials** to producers to meet recycled content goals.



CIRCULAR
MATERIALS

Advancing the
Circular Economy

Our Founders



Our Producers Represent Multiple Sectors



Appliances



Automotive



Beverage



Building supplies



Cinemas



Clothing



Consumer products



Convenience stores



Cosmetics



Dairy



Distribution



Electronics



Food



Furniture



Financial services



Paper products



Pharmaceuticals



Pharmacies



Retail



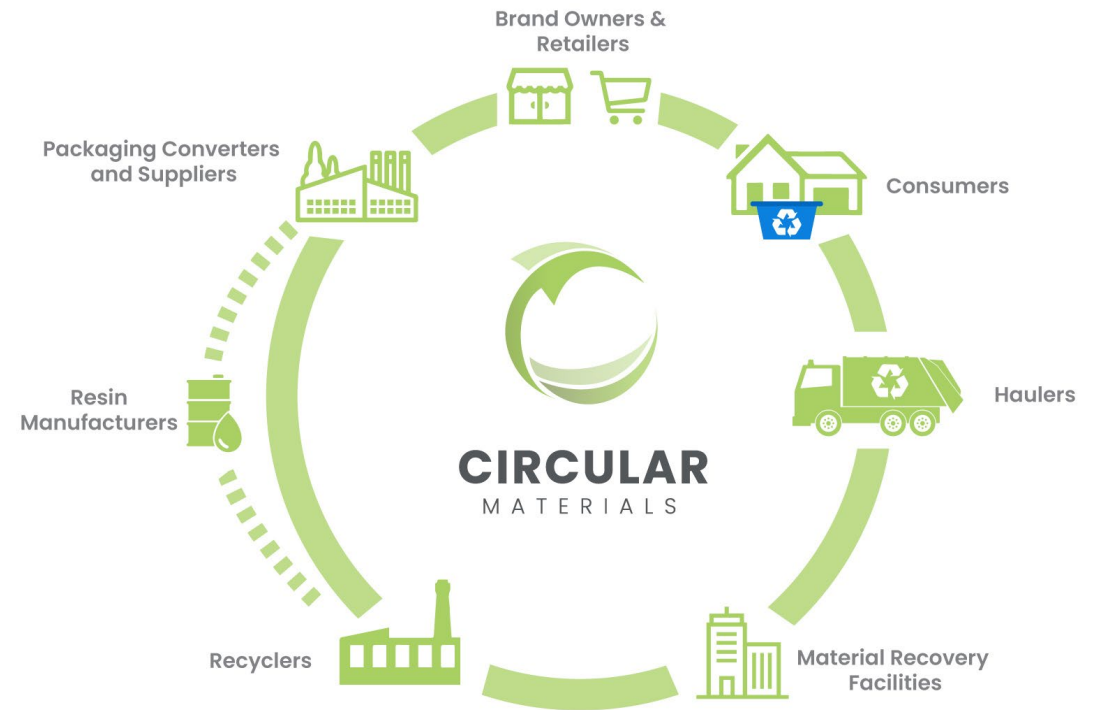
Restaurants



Tobacco

The EPR Movement Across Canada

- Extended producer responsibility (EPR) is a policy approach in which producers (the businesses that supply packaging and paper to residents) are responsible for the end-of-life management of the materials they supply to consumers.
- Many jurisdictions across Canada are moving to this framework.
- Circular Materials supports producers in meeting their obligations under each jurisdiction's EPR regulation.



Our Presence Across Canada

Implementing:

- Ontario: transition begins in July 2023
- New Brunswick: expected implementation in late 2023
- Alberta: 2025

Service Provider Relationships:

- British Columbia: Recycle BC
- Saskatchewan: Multi-Material Stewardship Western
- Manitoba's Multi-Material Stewardship Manitoba
- Ontario: Stewardship Ontario and Automotive Materials Stewardship

In Consultation:

- Saskatchewan
- Newfoundland and Labrador
- Yukon

Monitoring:

- Nova Scotia: Awaiting Regulation
- Prince Edward Island: Monitoring activity



Core Principles of EPR



Full Producer Responsibility

- Producers are fully responsible.
- Producers have autonomy.
- Materials pay their own way.



Fair and Effective

- Designed for fairness.
- Small business not unduly burdened.
- Recycling easy and convenient (e.g. consistent material list).



Positive Outcomes

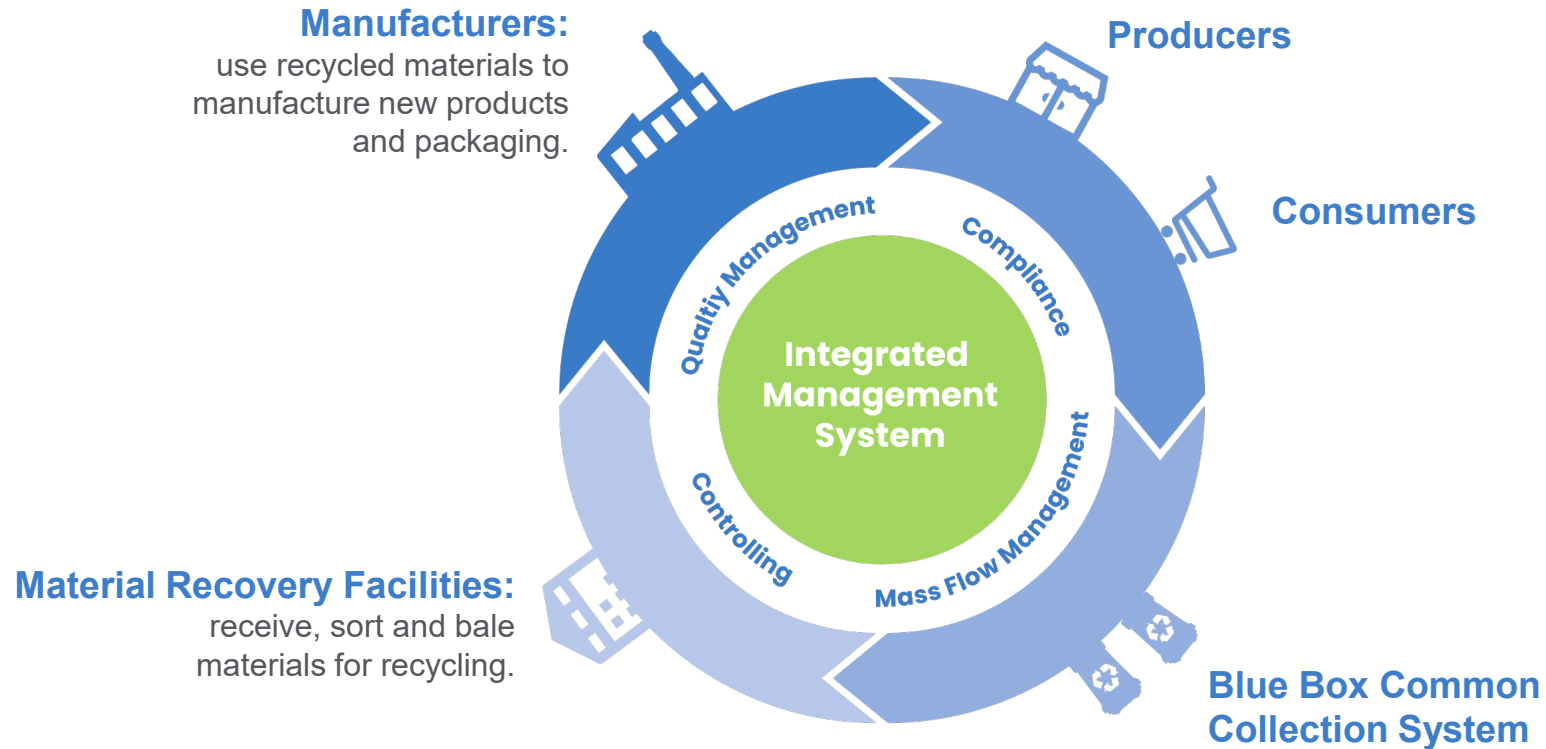
- System efficiencies.
- Improved packaging design.
- Accountability and compliance.
- Achieve regulatory targets.

Building Circular Supply Chains

- We are designing recycling supply chains where material is collected, recycled and returned to producers.
- This enhanced, closed-loop system:
 - Minimizes waste.
 - Ensures materials are reused again and again.
 - Advances innovation.
 - Increases performance.
 - Reduces the need for virgin resources.
 - Delivers improved environmental outcomes.



Material Traceability System



We are developing an integrated IT system for traceability, giving producers full transparency into the volume of blue box materials managed and access to materials.

Returning Material to Producers



- Through our material traceability system, producers can follow their material through the recycling supply chain.
- Producers have full visibility into the state and quantity of materials as they transform from being recycled by a consumer to a recovered resource.
- Producers can procure their share of material for use as recycled content in new products and packaging.
- This advanced system adds value to our producer members and supports them in meeting their recycled content goals.

Advancing the Circular Economy

- Circular Materials represents the evolution from product stewardship to a more circular economy.
- Having one administrative body that oversees a national harmonized approach for recycling supply chains will:
 - Reduce overall costs.
 - Unlock value.
 - Build efficient systems that encourage synergies and continuous improvement.
 - Ensure producers can access material to use as recycled content.





CIRCULAR
MATERIALS

Advancing the
Circular Economy

Questions?



@circmaterials



Circular Materials



info@circularmaterials.ca



circularmaterials.ca



Ridwell

Kevin Kelly – Vice President Operations





Ridwell

**Wasting less, made
easy.**

Kevin Kelly
VP, Operations
Recycling Development Center
March 8, 2023



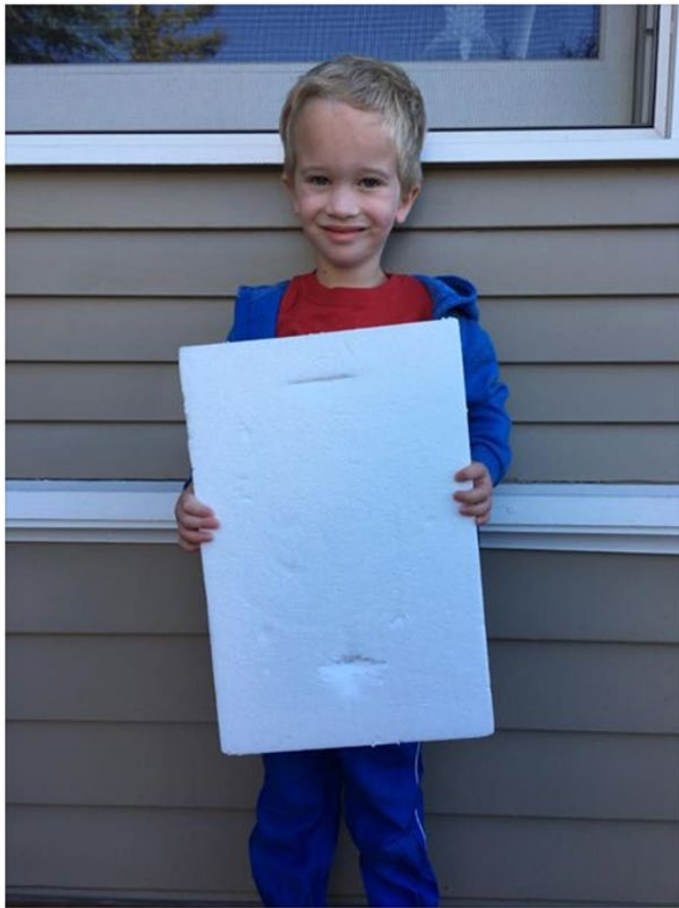
It all began with a bag of batteries and no good answers for what to do with them.



Ryan Metzger ▸ Buy Nothing Queen Anne West, Seattle, WA

6 hrs · Seattle · 🌐

Ask: does anyone have Styrofoam they would like Owen and me to recycle for them? Styrofoam is often thrown in the trash where it takes 500 or more years to breakdown, but a place in Kent will recycle it! PM me and leave on porch by noon today if you'd like us to take any you have.



👍 Like 💬 Comment

👍❤️ 30

One bag of batteries led to 22 categories and over 1,200 pick-ups!



Light Bulbs



Electronics



Styrofoam



Paint



And became Ridwell!

We have 3 big goals:

1. Make it simple (and delightful) to get rid of stuff responsibly
2. Create new options for old or unused things
3. Support responsible consumption





How does it work for Members?

Subscription based, mix of recurring and inspirational categories



We provide reusable bags to sort and collect **batteries, light bulbs, threads, and plastic film.**



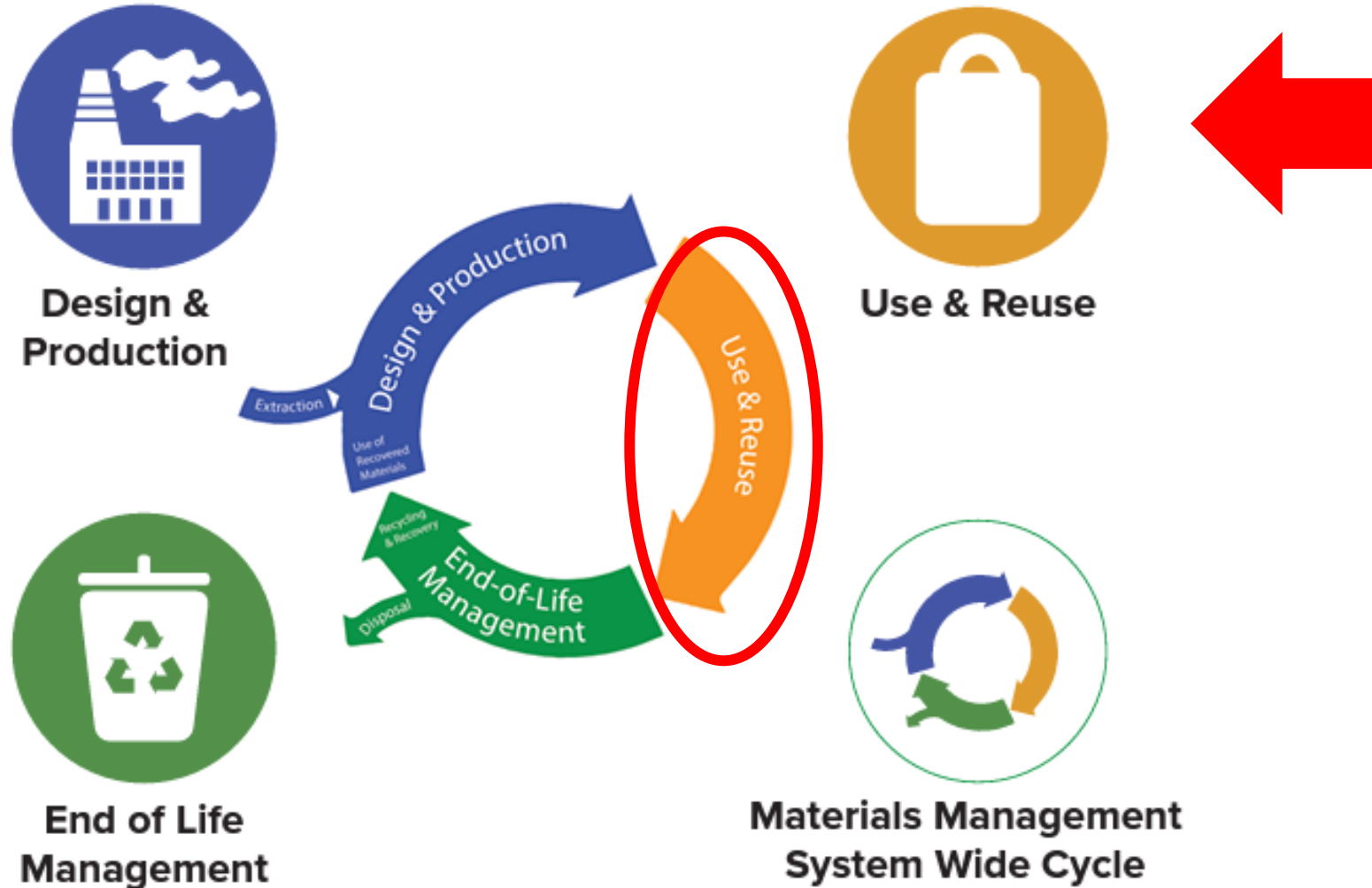
We also have a rotating fifth **featured category** that inspires delightful de-cluttering



Our Ridwell bin makes it easy for a seamless and unsupervised pickup **every two weeks.**

Where we fit into to the cycle:

Guide to the Different Parts of the Materials Management Cycle:



Our Categories: Items NOT in Curbside Programs

Zero overlap with existing services

Ridwell does not pick up any of these

Residential Recycling | Accepted Materials
Olympia

Plastic Containers - NO Lids!

Bottles - 8oz & Larger Jugs (Milk, Laundry, etc.) Buckets & Ridged Flower Pots (no lids, no handles) Tubs (Dairy/Coffee - no clear tubs)

Paper

Newspaper & Mail Paperback Books Office Paper (not shredded) Magazines Cardboard Boxes (cereal, soda, shoe) Corrugated Cardboard

Recycling Glass

Glass is no longer accepted in your recycle cart. Please take it to a drop off site or put it in the garbage.

Drop off locations:

- 1000 10th Ave SE
- Yauger Park 503 Alta St SW
- Concrete Recyclers 2935 Black Lake Blvd SW
- Waste And Recovery Center 2420 Hogum Bay Rd NE

Metal - No Lids!

Large Cans (peaches, coffee, etc.) Aluminum Cans Tin Soup Cans

Recycle Coach App

- Find out what to recycle & compost! Use the "What Goes Where" feature to search over 20,000 materials.
- Available in your app store and online olympiawa.gov/wastewise

Recycling Notes

- Empty containers only Rinse out all food or liquid from containers.
- Throw away all lids and caps.
- Flatten cardboard

Visit olympiawa.gov/wastewise for organics, recycling and garbage information.

Residential Garbage | Accepted Materials
Olympia

Garbage

Aluminum Foil Blister Packs Plastic Bags Caps - Any Kind Clear Plastic Food Containers Prepackaged Food Bowls & Trays Batteries Plastic Utensils Plastic Wrap - garbage Metal Juice Bags Wrappers Laundry Baskets Plastic Bottles - recycle Plastic Clamshells Clothing Hangers Plates - Any Kind Styrofoam Peanuts VHS & Cassette Tapes Bottle Caps & Lids Broken Glass Metal Pots & Pans Glass Jars & Bottles Shredded Paper Cartons & Frozen Food Boxes Pizza Boxes & Egg Cartons

Garbage Notes

- Please throw away anything that cannot be recycled or composted.
- Household Hazardous Waste Examples include cleaners, solvents, pesticides and chemicals should go to Thurston County's Hazohouse (2418 Hogum Bay Road NE, Lacey)

Recycling Glass

Glass is no longer accepted in your recycle cart. Please take it to a drop off site or put it in the garbage.

Drop off locations:

- 1000 10th Ave SE
- Yauger Park 503 Alta St SW
- Concrete Recyclers 2935 Black Lake Blvd SW
- Waste And Recovery Center 2420 Hogum Bay Rd NE

Recycle Coach App

- Find out what to recycle & compost! Use the "What Goes Where" feature to search over 20,000 materials.
- Available in your app store and online olympiawa.gov/wastewise

Visit olympiawa.gov/wastewise for organics, recycling and garbage information.

Ridwell focuses on items here that could be reused or recycled (but not through curbside bins)



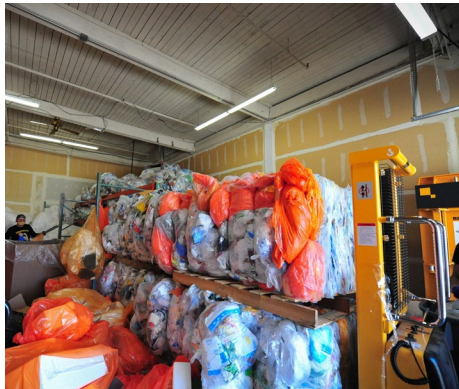
Plastic Film

What is it?

Stretchy, thin plastics

Not included in curbside and single-stream recycling

Can shred and jam machines!



Why our approach is different

Members presort and ensure material is free from contaminants

Ridwell accumulates sufficient volume to bale and send to a commercial recycling partner

Trex uses plastic film as a raw material for their manufacturing process (400M pounds per year!)

Plastic film becomes high-performance wood-alternative decking.

Threads

What is it?

Clothes and shoes in any condition!

95% of threads can be recycled!

Often causes issues for municipal recyclers by getting caught in machinery



Why our approach is different

Ridwell makes getting your old clothes to someone who will reuse them super convenient.

We maximize reuse by working with a range of partners, from small artisans to large organizations like Goodwill (and others).

Your clothing may be used as clothing again, or it may find new uses such as insulation, pet bedding, scraps and rags, and more!

Light bulbs

What is it?

LED, incandescent, halogen, compact fluorescent lights (CFL) bulbs!

These break easily in trash and create hazards from broken glass and leaked chemicals



Why our approach is different

We pick up burnt out bulbs every two weeks so they don't have a chance to accumulate

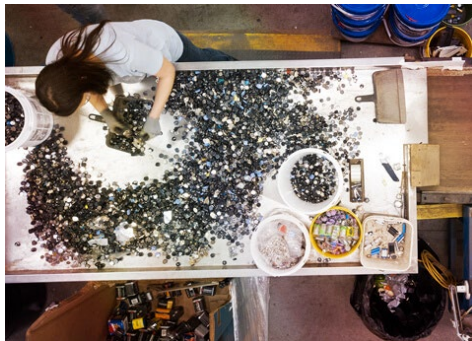
Ridwell partners with EcoLights, who processes the bulbs and reclaims phosphor powder and glass, plastic, and metal scraps — while keeping heavy metals like mercury out of the environment!

Batteries

What do we take?

All household batteries: alkaline, rechargeable, for small electronics, for hearing aids

Only accepted at battery recycling centers, often a long drive!



Why our approach is different

Ridwell conveniently picks up batteries every two weeks so they don't accumulate

Our partners, EcoLights and Call2Recycle, responsibly recycles batteries and are constantly innovating to reuse as much as possible from them.

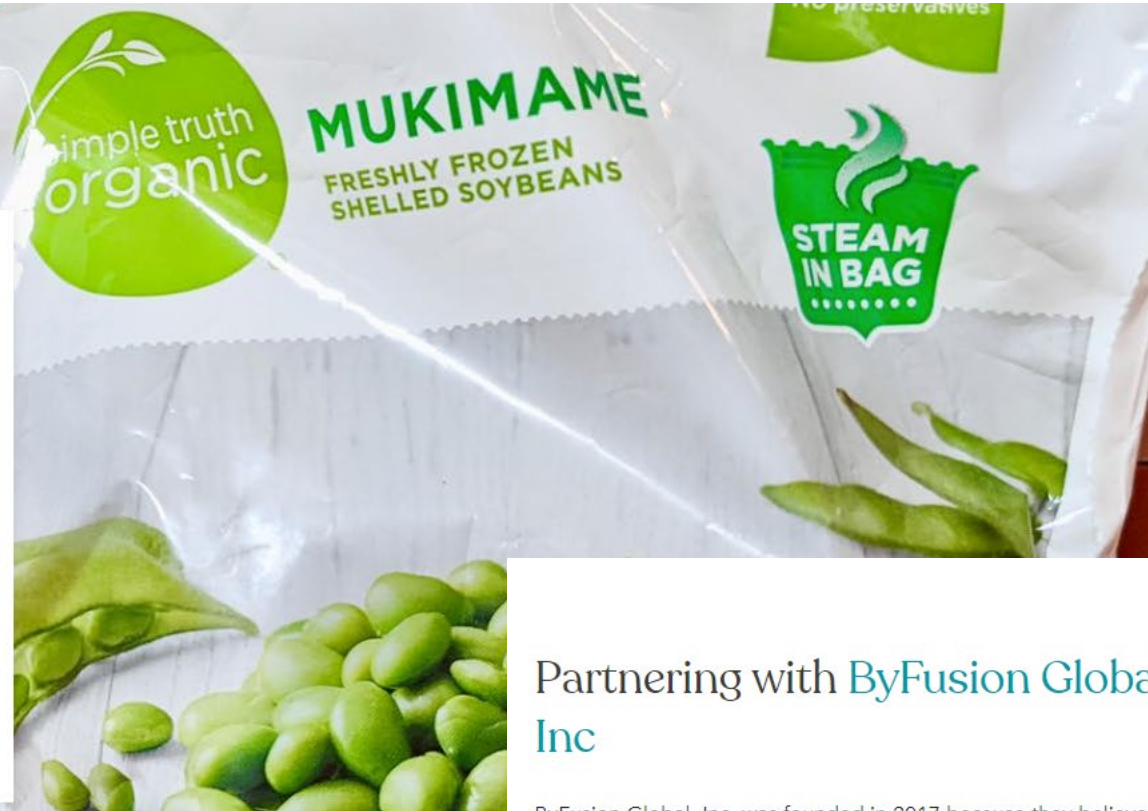
Battery components can become new batteries, fertilizer, and more, while harmful chemicals are kept out of our environment.

New Categories – Multi-layer Plastic

Multi-layer plastic.

The bags your frozen berries and favorite almonds come in may look and feel like they're made of only one kind of plastic, but they're actually made of multiple layers of different plastic types. These layers help keep food fresh until it's eaten, but they're notoriously difficult to recycle. That's where Ridwell comes in!

We pick up your multi-layer plastic from your doorstep, and our partners turn them into cool new products like building materials and artificial stone used for supporting plant life.



Partnering with [ByFusion Global Inc](#)

ByFusion Global, Inc. was founded in 2017 because they believe Earth is our most valuable resource. They saw plastic was on the verge of becoming one of Earth's most devastating environmental threats and took the lead to be part of the solution. ByFusion has simplified a complex problem with a platform that converts all types of plastic waste into a high-performing, advanced building material called ByBlock, a solution that enables communities to be the change needed to solve the global plastic waste crisis.



Local Seattle partnerships



Transparency Page

ridwell.com/transparency

So, where does it all go?

We work with local, regional, and national partners to divert as much as possible from the landfills.

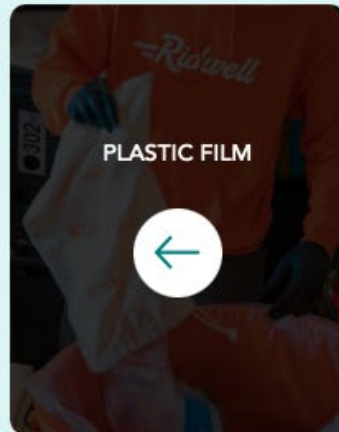
DENVER

SEATTLE

PORTLAND

MINNEAPOLIS

AUSTIN



Styrofoam

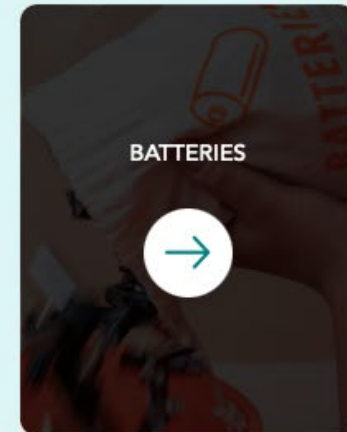
95.6% diverted material

4.4% contamination*

[Styro Recycle](#) and [DTG Recycle](#) use heat and pressure to densify your EPS into reusable blocks.

Top contaminants

Compostable food trays, dirty Styrofoam



10M+ pounds

Saved from landfills since 2019

Environmentally-Conscious Cities Have Welcomed Us

We are helping over 50 Oregon, Washington, Colorado, Minnesota and Texas cities waste less



“It was a pleasure hearing about the Ridwell business model. I do believe **Portland, like Seattle will be a great City for this kind of program.**”

Annette,
City of Portland



“Ridwell helps our residents achieve important sustainability goals and it’s my belief that **Ridwell strengthens rather than interferes with traditional garbage haulers.**”

Ross,
City of Mercer Island



“Kirkland would not have any issues with Ridwell operating and **collecting specific items that Waste Management does not.**”

John, City of Kirkland



Sec ond Event = Better Success!

Municipal Doorstep Collection Events

1,396 bags of Styrofoam!



784 bags of plastic film!



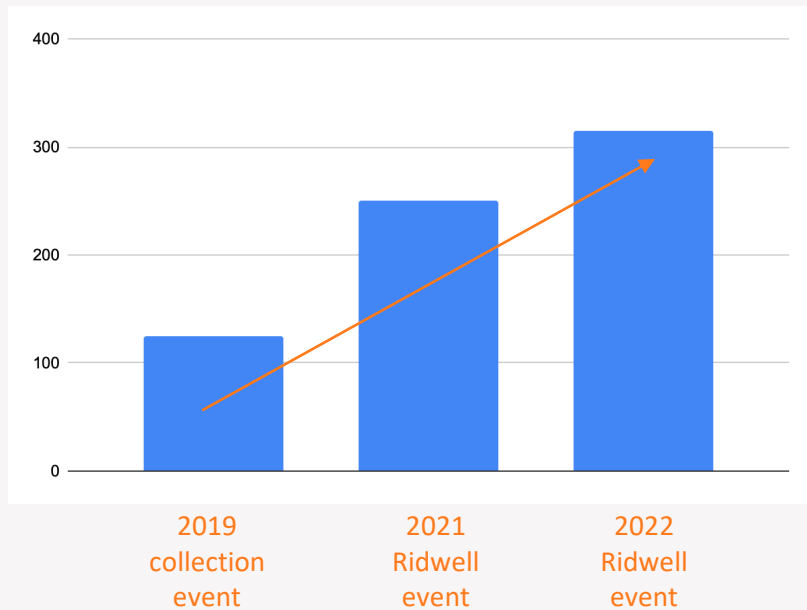
257 bags of holiday lights!



Advantages to drop-off events

Higher volume!

Cubic yards of Styrofoam



Less vehicle traffic



6 vans each Saturday



442 cars/event

Easier participation

"Thank you! The experience was great and convenient that I've signed up, was worried it wouldn't work in an apartment however you did wonders"

835 non-Ridwell households participated!

Q&A

Kevin.Kelly@ridwell.com



AGENDA

- 9:00 am Welcome & review meeting goals
- 9:10 am Board and Agency Updates
- 10:00 am Legislative Update
- 10:15 am Break
- 10:30 am Presentations
- 11:45 am Wrap-up

Wrap up

Things to remember

- NextCycle Pitch Event

<https://www.nextcyclewashington.com/news-collection/circular-accelerator-pitch-showcase>

- March 23 from 10 am to 5 pm
 - No charge – lunch included
-

Tasks for board members and attendees

- Projects for the Center
- Board meeting agenda topics
- Fill out post meeting survey
- Register for the glass summit

Wrap up

Next meeting:

- Wednesday, June 14th, 2023
 - Location: to be determined
 - Tour: to be determined
-

Tasks from today:

- Notes and slides from today will be posted to the EZ page next week.





See you all at the June 14th board meeting!

