



# Coeur d'Alene Tribe Brownfields Response Program

May 30, 2019

*By Tiffany Allgood*

Natural Resources Department  
Environmental Programs Office

# Presentation Outline

- Brief background on the Coeur d'Alene Tribe
- Overview of the Tribe's Natural Resources Department and Environmental Programs Office
- Why the Tribe began a Brownfields Response Program
- What we have done so far in our Tribal Response Program
- Site-specific work at the Old Tensed Town Landfill
- What we are planning to do
- Challenges
- Contact information

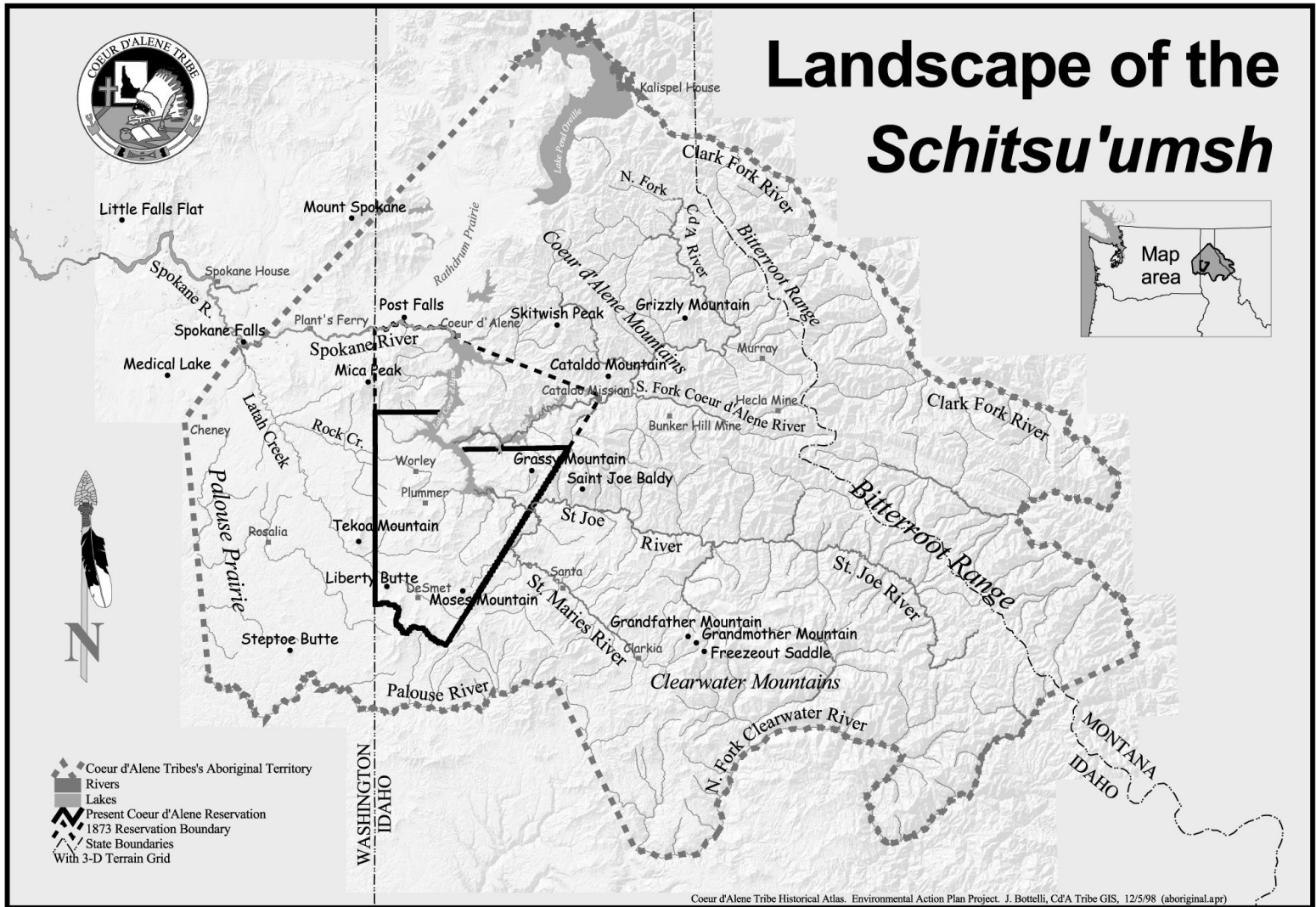
# Coeur d'Alene Tribe Background

- The Coeur d'Alene Reservation is approximately 334,000 acres, not including Tribal submerged lands
- Aboriginal territory = more than 5 million acres
- 6,760 residents according to the 2010 Census
- Tribal enrollment is ~2501 and growing
- Tribe relies on forestry, agriculture, gaming, etc. in the current economy
- Tribe continues traditional activities such as fishing, hunting and gathering foods and medicine





# Landscape of the *Schitsu'umsh*





# Figure 1.0 Coeur d'Alene Reservation





# Coeur d'Alene Lake



# Tribal Natural Resources Department

- In 1992, the Tribal Natural Resources Department was established as a stand-alone Department
- 7 programs in the NR Department: Air Quality, **Environmental Programs Office**, Fisheries, Forestry/Fire, Land Services, Pesticides Circuit Rider, and Wildlife



# Environmental Programs Office

- 5 staff people in EPO
- The Environmental Programs Office was established in 1997 as a one-person program with EPA General Assistance Program grant funds to develop a Tribal environmental list of concerns and an environmental action plan
- EPO currently does environmental planning, environmental health and special env. projects
- Almost all funding for EPO has come from federal sources



# Why Did We Begin a BF Program?

- Aware of several potentially contaminated sites from previous solid waste assessments
- One site in particular was going to be worked on by our Forestry Program
- Want to make sure that this and all areas are safe for people, animals, plants and for all of the Tribe's resources to be clean and available for traditional Tribal uses

# Steps To Begin BF Program

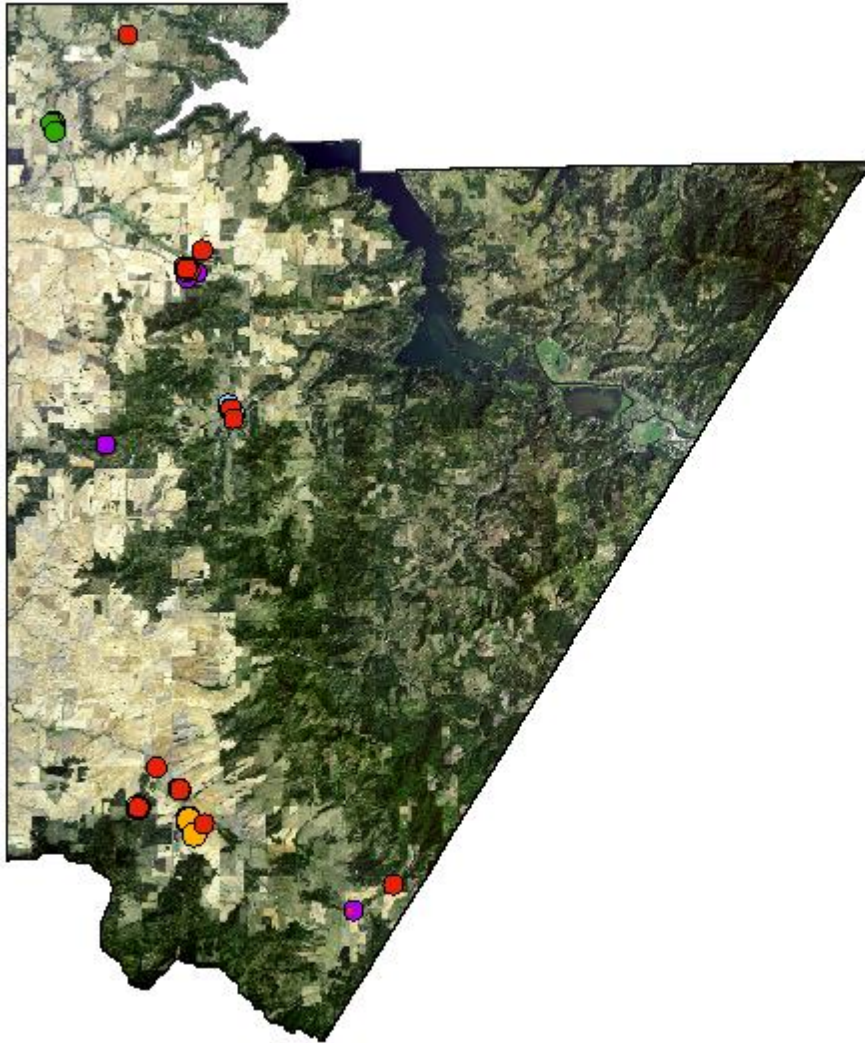
- **Contacted EPA** for information on Brownfields funding
- Happened to be very shortly before the BF Response Program funding application was due
- **Researched 128(a) Program**
- **Completed and submitted funding application to EPA in Spring 2016**
- **Started working on the Program in October 2016**



# What We Have Done So Far

- **Hired outside assistance** in a competitive process (Alta Science and Engineering – formerly TerraGraphics) which took about 6 months
- **Developed a list** of all potentially contaminated sites on the Reservation – 30 sites
- **Screened list for potentially BF eligible sites** – 22 sites and collected information on these sites
- **Visited most of the sites** on the list with a small group of Tribal staff and Alta and **collected GPS coordinates**

## Potential Brownfields Sites



### Legend

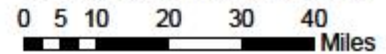
-  Global List of Potential Brownfields Sites
-  Air Regulation Sites
-  Landfills and Dump Sites
-  Agricultural Sites
-  RCRA Sites
-  Reservation Boundary

The information depicted on this map is the result of digital analysis performed on a database consisting of information from a variety of governmental and other credible sources. The accuracy of the information presented is limited to the collective accuracy of the databases on the date of the analysis. The information is believed accurate and reasonable efforts have been made to ensure the accuracy of the map. However, the Coeur d'Alene Tribe expressly disclaims responsibility for damages or liability that may arise from use of this map. This product is the property of the Coeur d'Alene Tribe and its use is thereby restricted.

Map Produced by Coeur d'Alene Tribe GIS on 12/13/2017  
File Name: GIS-6ND-Data/Wetlands Group/March\_2017\_CdA/March\_2017\_mapa.mxd  
For information on this map or other maps please contact us at

[gis@coeurtribe-nsn.gov](mailto:gis@coeurtribe-nsn.gov)

CONFIDENTIAL AND PROPRIETARY. UNAUTHORIZED USE PROHIBITED





# What We Have Done So Far

- **Posted a public record** on the Tribe's website (and revised it at least annually)
- **Identified 3 potential high-priority sites** to choose from to conduct initial site specific work on
- **Developed and held two internal Tribal Brownfields Advisory Group meeting** to discuss the Brownfields Program and the 3 sites (December 2017 and March 2019)
- **Held a Tribal community Brownfields Meeting** in March 2019

# What We Have Done So Far

- **Started To:**
  - **Develop screening levels for soil, water and air** to assist with our sampling and also with potentially setting clean-up levels
  - **Compile information on other tribes' and other entities' Response Programs** to help inform our program's Standard Operating Procedures
  - **Develop a Tribal BF Outreach Plan**
  - **Coordinate with other governments** on BF work



# Site-Specific Work

Old Tensed Town Landfill

# Old Tensed Landfill

- Approximately 20 acres
- Opened about 1969
- Closed in late 1980's/early 1990's
- Land is a Tribal Trust property
- Comingled contamination likely
- Volume and contents unknown
- Potential impacts to groundwater and surface water
- EPA Brownfields eligible



# Old Tensed Town Landfill

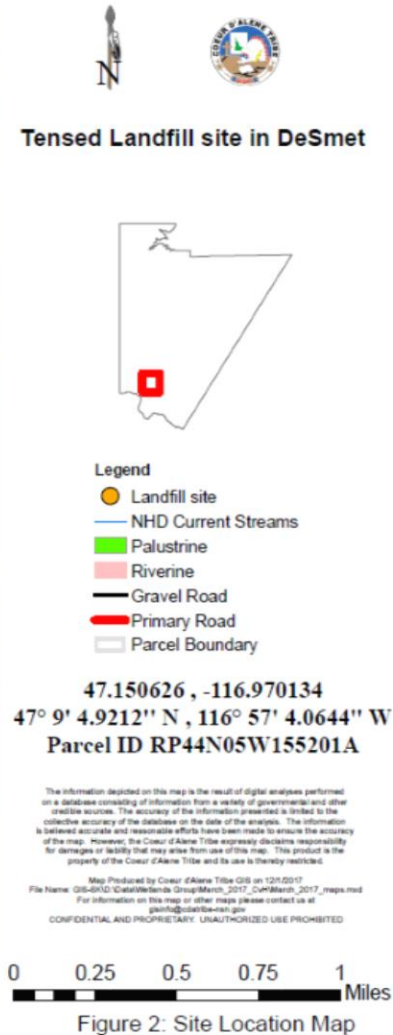
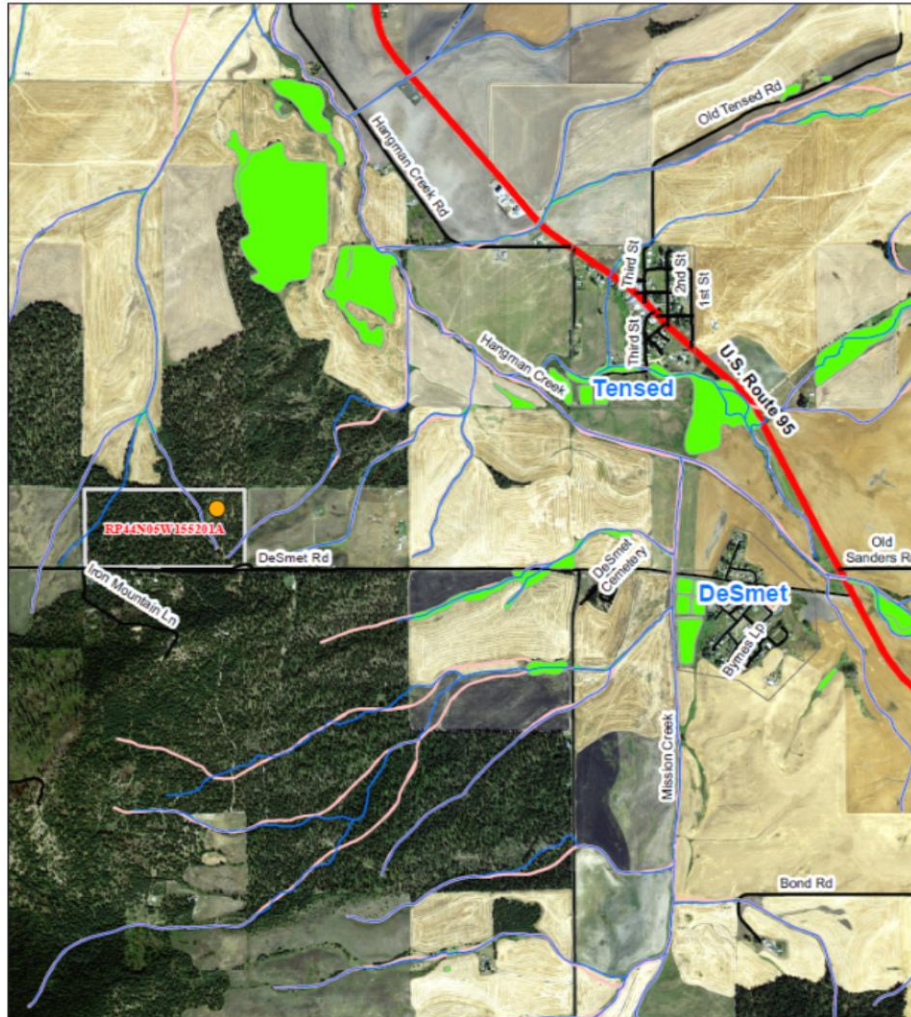


Figure 2: Site Location Map







## Moose in Farm Fields

This is an area  
that is near  
the Old  
Tensed Town  
Landfill



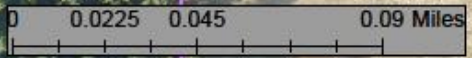


**Old Tensed Town Landfill  
DeSmet Rd  
DeSmet, Idaho  
RP44N05W155201A**



RP44N05W155201A

 Brownsfield Parcels



The information depicted on this map is the result of digital analysis performed on a database consisting of information from a variety of governmental and other credible sources. The accuracy of the information presented is limited to the collected accuracy of the databases on the date of the analysis. The information is believed accurate and reasonable efforts have been made to ensure the accuracy of the map. However, the Coeur d'Alene Tribe expressly disclaims responsibility for damages or liability that may arise from use of this map. This product is the property of the Coeur d'Alene Tribe and its use is thereby restricted.

Map Produced by Coeur d'Alene Tribe GIS on 02/28/2017  
File Name: GIS-SKD/Detail/Wetlands Group/Merch\_2017\_CvH/Merch\_2017\_maps.mxd  
For information on this map or other maps please contact us at  
gisinfo@cotribe-nsn.gov  
CONFIDENTIAL AND PROPRIETARY. UNAUTHORIZED USE PROHIBITED





NO FIRE  
CLOSED  
PERMANENTLY





**DeSmet Illegal Dumpsite – before clean-up**



**DeSmet Illegal  
Dumpsite – after  
clean-up in 2006**



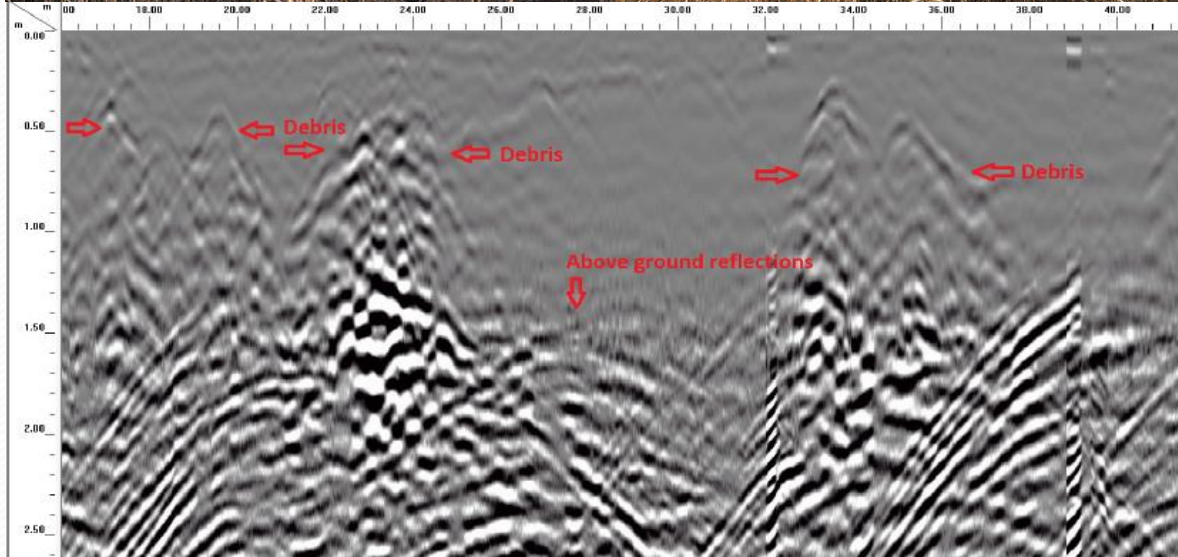
# Old Tensed Town Landfill

- **Completed and submitted a Region 10 Site Eligibility Worksheet for a Phase I Environmental Site Assessment (ESA) for the Old Tensed Town Landfill**
- **Completed a Phase I ESA report for the Old Tensed Landfill**
- **Completed a Site-Specific Sampling Plan (SSAP) for conducting a geophysical assessment at the site**
- **Conducted the assessment, completed the report and used it to develop the sampling plan for the Phase II ESA**



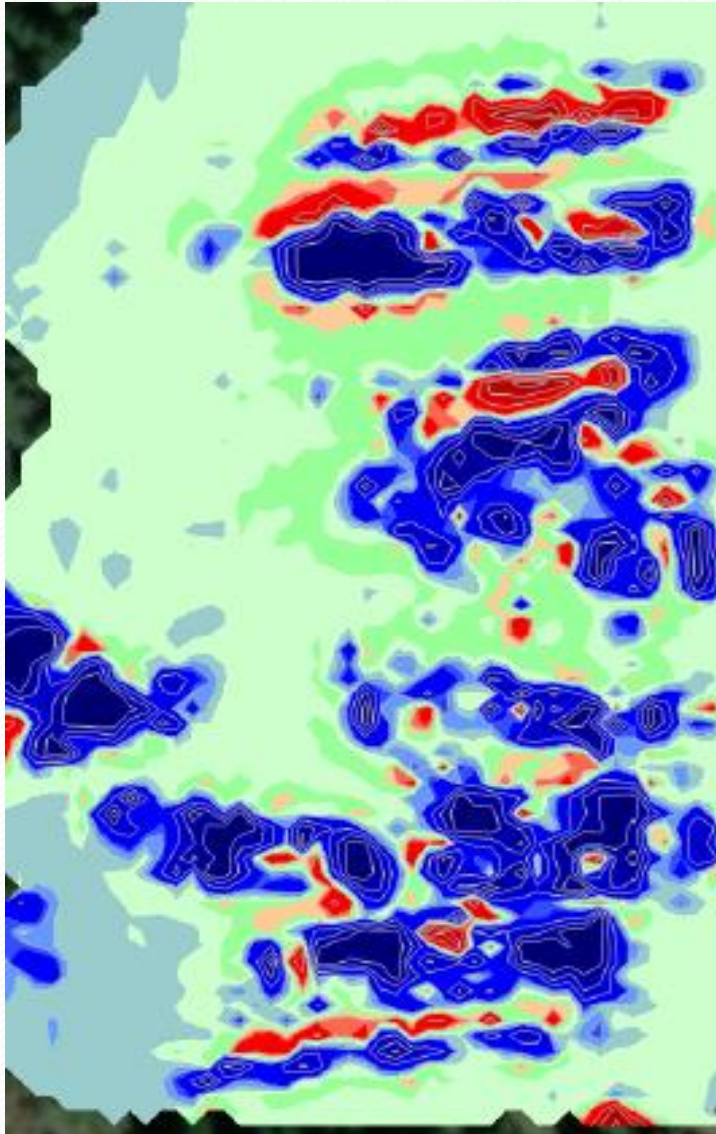
# GPR

# EMI

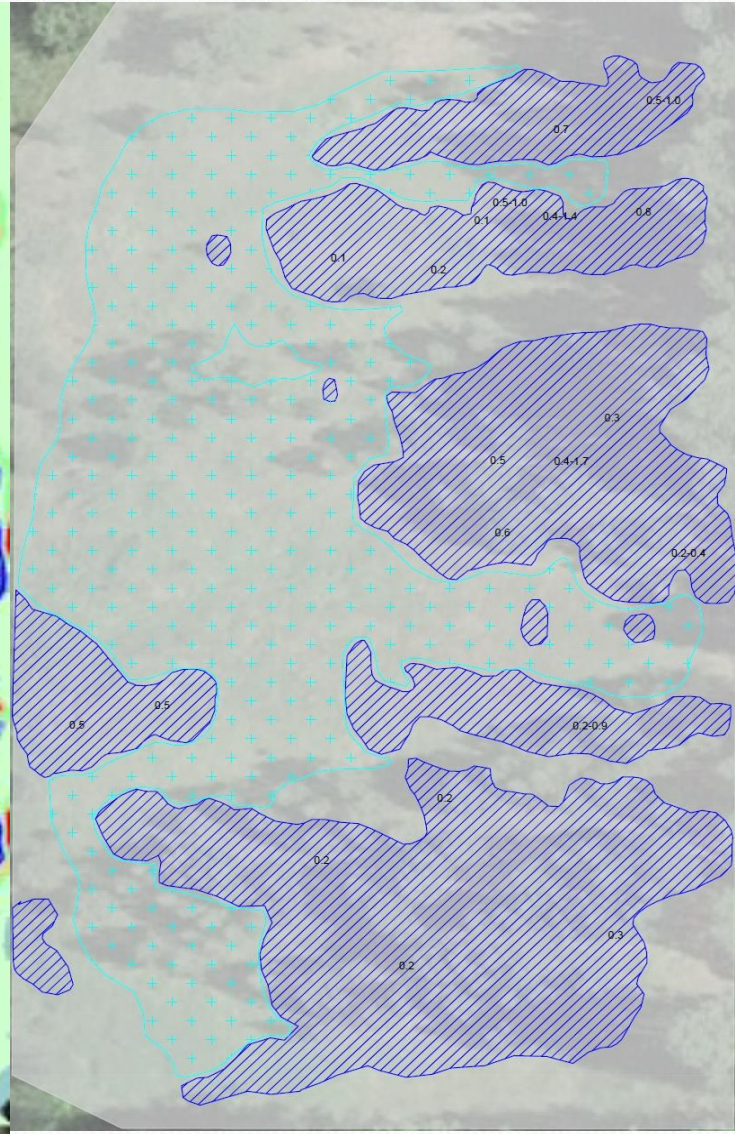




# EMI



# GPR









# Old Tensed Town Landfill

- **Recommended that the Tribe conduct a Phase II ESA (sampling), and the Tribe approved**
- **Submitted a Region 10 Site Eligibility Worksheet for a Phase II Environmental Site Assessment at the Old Tensed Town Landfill to EPA**
- **Submitted a draft of Quality Assurance Project Plan (QAPP) and Health and Safety Plan (HASP) to EPA for the Phase II ESA**



# Old Tensed Town Landfill

- **Obtained concurrence from the Tribe's Historic Preservation Officer** on the sampling plan
- **Completed Endangered Species Act compliance** with EPA through ACOE for Phase II sampling
- **Entered data into EPA's ACRES website** for the Phase I ESA

# What We Are Planning to Do

- **Obtain permission from EPA to conduct the Phase II ESA at the Old Tensed Town Landfill**
- **Complete the Phase II ESA at the Old Tensed Landfill**
- **Continue to learn about the BF Program from EPA and others and apply it to our program**



# What We Are Planning to Do

- **Continue to look at our BF list for new sites to conduct Environmental Site Assessments on**
- **Add new sites if needed**
- **Continue to conduct Phase I ESA's on new sites**
- **If needed, conduct long-term monitoring, mitigation and/or clean-up**

# What We Are Planning to Do

- **Continue to update** our public record and update our site data into ACRES
- **Continue to hold public meetings** to obtain input and information
- **Continue to hold internal Brownfields Advisory Group meetings**
- **Continue to build program capacity**



# Challenges

- **Learning a new EPA program** and understanding its potential
- **The time it takes** to get a new program up and running
- **Determining what is needed** to support the program
- **The time it takes to get approvals** internally at the Tribe added to the time to get EPA approvals

## Comments, questions, suggestions, discussion?

- You can find a link to the Tribe's Brownfields public record on the Tribe's website at <https://www.cdatribe-nsn.gov/natural-resources/environmental-program/>
- I can be reached at (208) 686-8802 or at [tallgood@cdatribe-nsn.gov](mailto:tallgood@cdatribe-nsn.gov)
- Thank you for your time today.