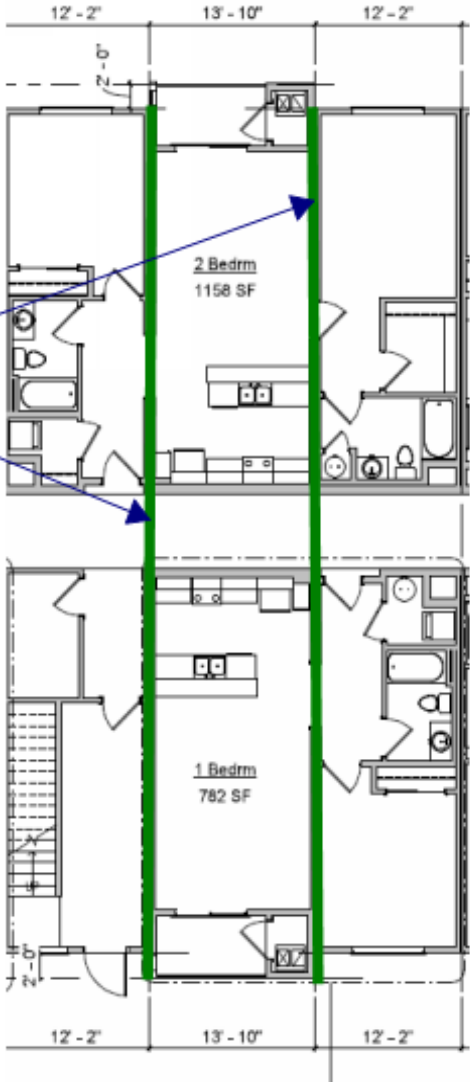


Technical things to remember when considering and designing for an efficient and affordable modular project.....

Grid Alignment

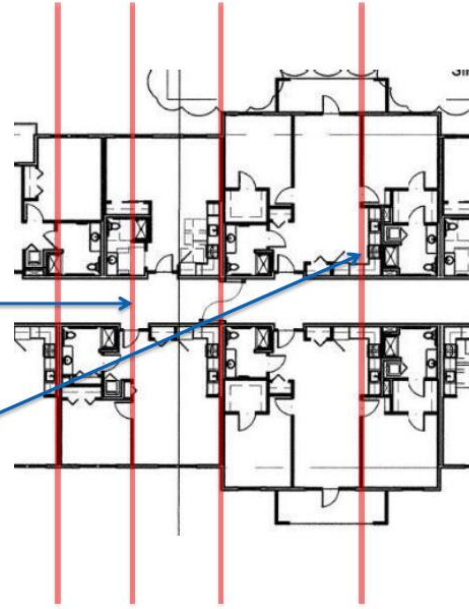
GOOD ALIGNMENT
Grids align through
corridor and units



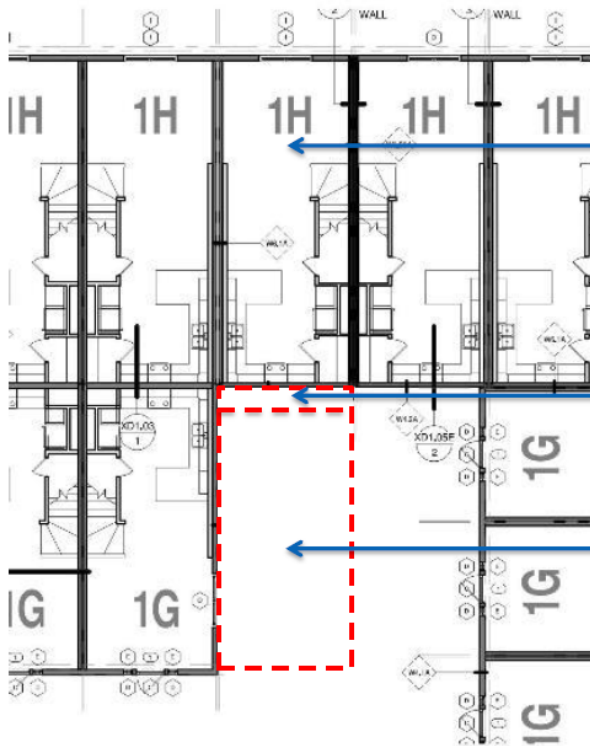
(Bad) Grid Alignment

BAD ALIGNMENT
Grids do not align
through corridor and
units

BAD ALIGNMENT
@ kitchen cabinets



Sawboxes



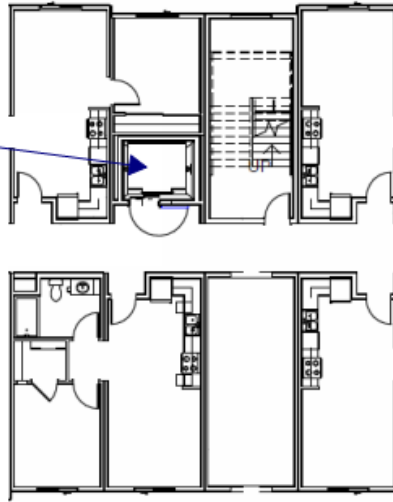
Short modules can be combined with
other short modules of same width for
Optimization (Sawbox)

Cut-away area of Sawbox

Short module from level above combine
w/ minimum 36" between for combined
length within shipping parameters

Stairs & Elevators

Openings provided for site installation of elevators

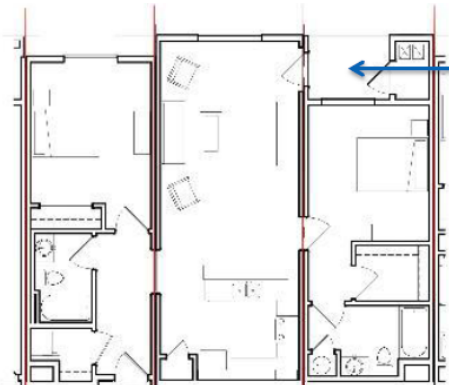


Wood stairs can be built into the module

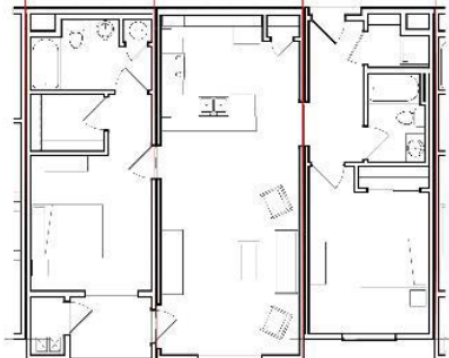


Maximize the Module Size (14'6" x 70') — width dependent upon transport laws in your state

Can include exterior decks

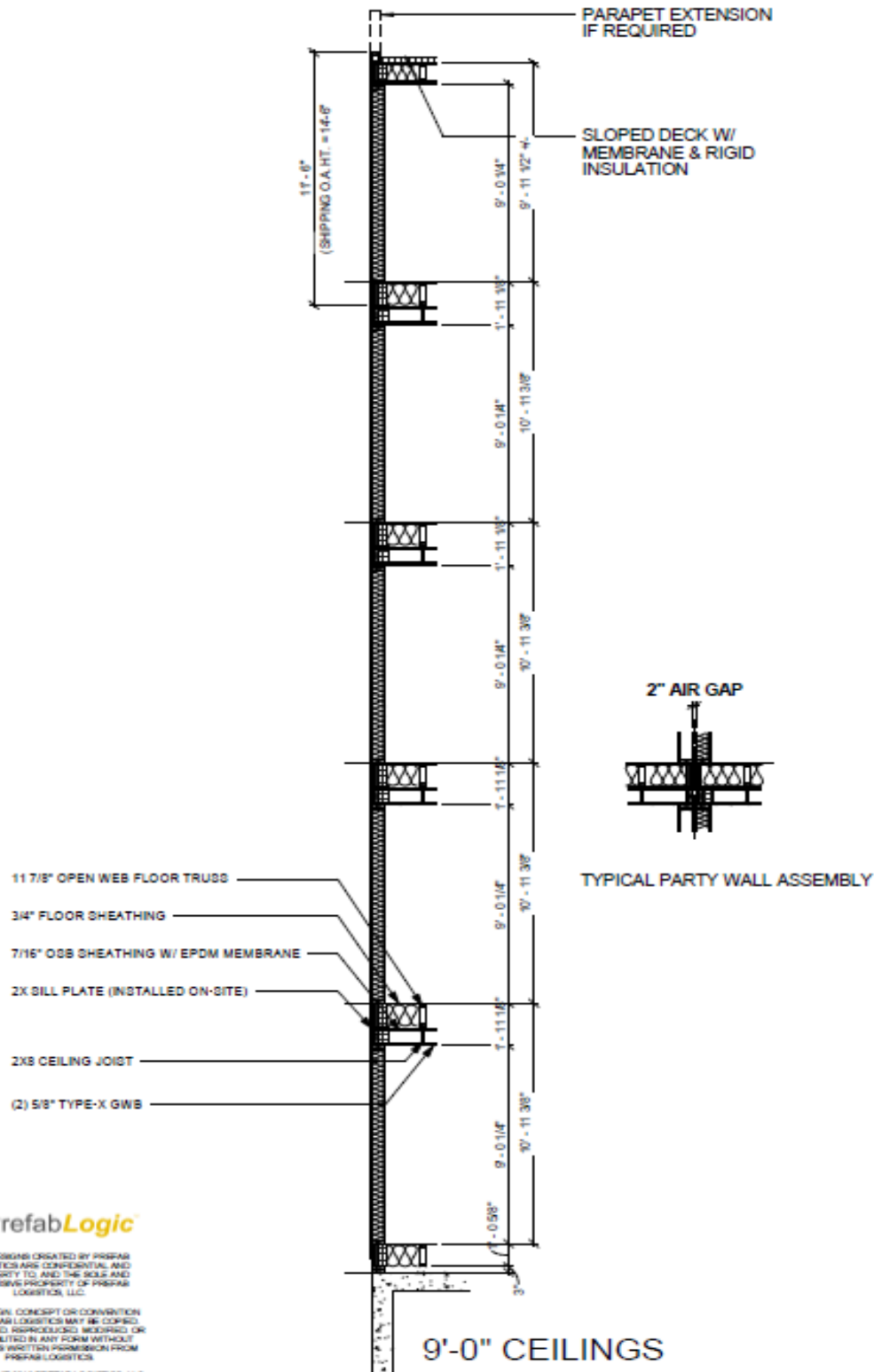


Full length module includes corridor



Ideal SF per module is 800 to 1,000 SF

TYPICAL 5 STORY ELEVATION



ALL DESIGNS CREATED BY PREFAB LOGISTICS ARE CONFIDENTIAL AND PROPERTY TO, AND THE SOLS AND EXCLUSIVE PROPERTY OF PREFAB LOGISTICS, LLC.

NO DESIGN, CONCEPT OR CONVICTION OF PREFAB LOGISTICS MAY BE COPIED, REPRODUCED, REWRITTEN, REFORMULATED, OR DISTRIBUTED IN ANY FORM WITHOUT EXPRESS WRITTEN PERMISSION FROM PREFAB LOGISTICS.

COPYRIGHT 2018 PREFAB LOGISTICS, LLC

PLANS THAT WORK



- **HEIGHT**

- Overall module height: 12'-4"
- Ceiling assembly is typically 12"
- Floor assembly is typically 12"

Apartment ceiling height is typically 9' but can be increased to 9.5' or 10' (other factors apply)