

How to Complete the Survey123 App

Access to the Connor Creek Survey:

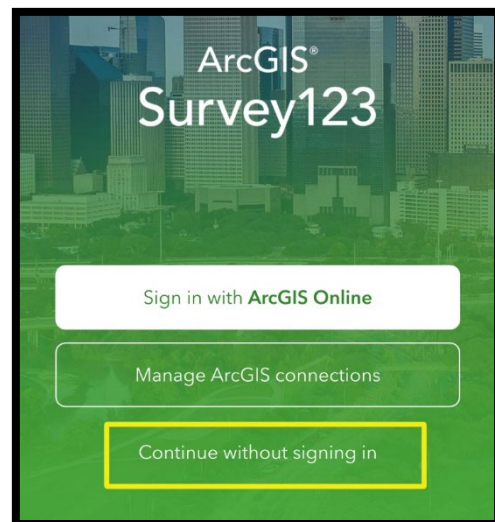
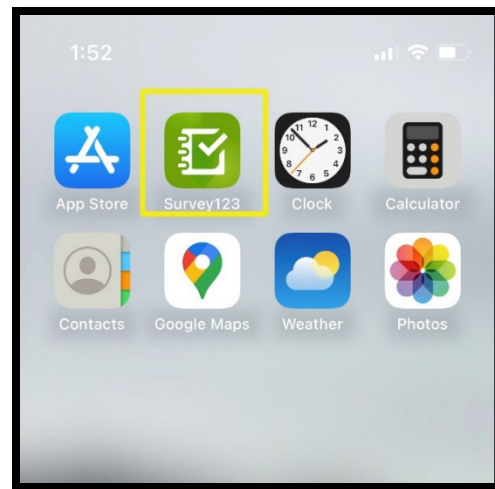
1. You can access the Connor Creek Survey by a.) tapping on the link, b.) scanning the QR Code, or c.) tapping on the app and selecting 'Continue without signing in':

a.) <https://arcg.is/1PnTre1>

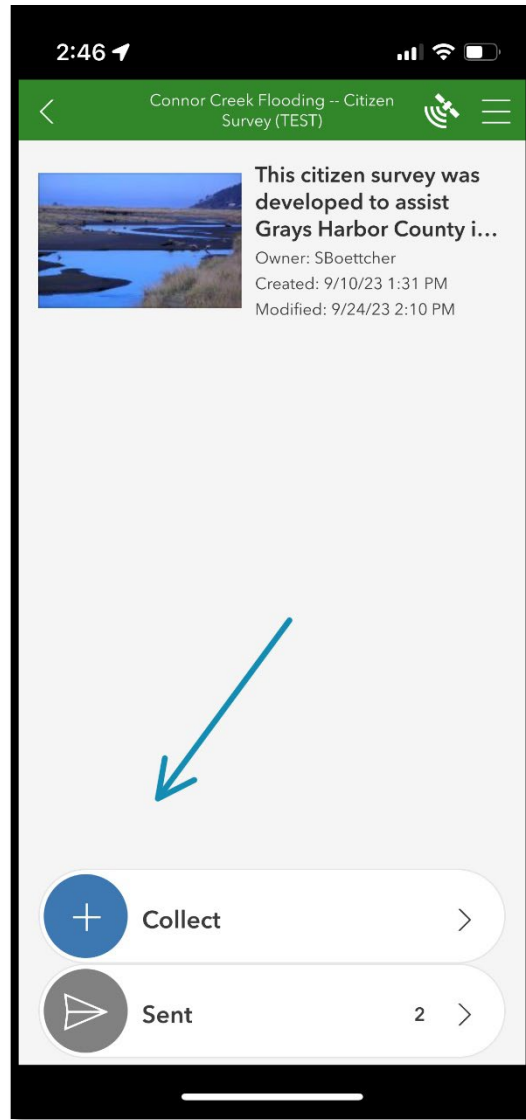
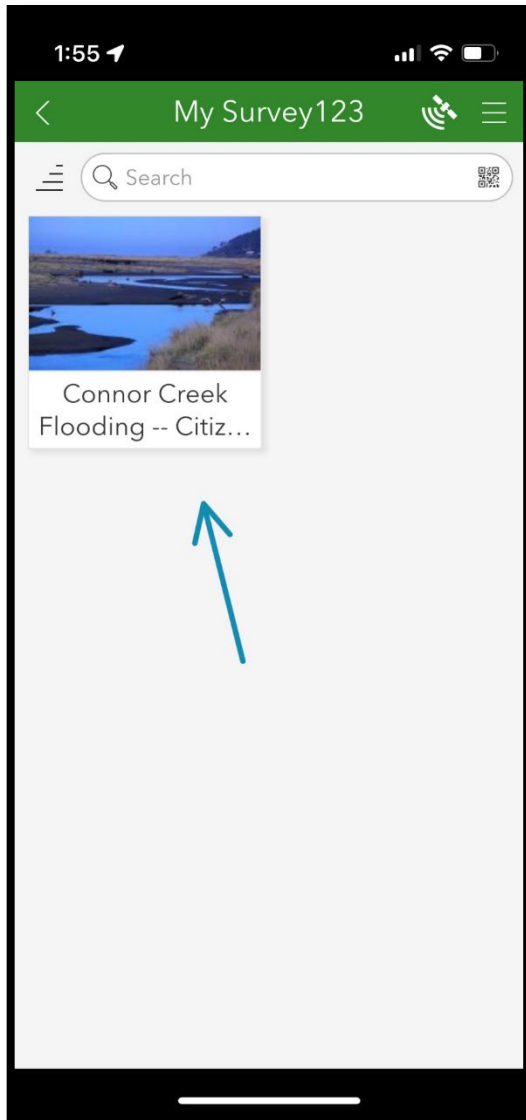
b.)



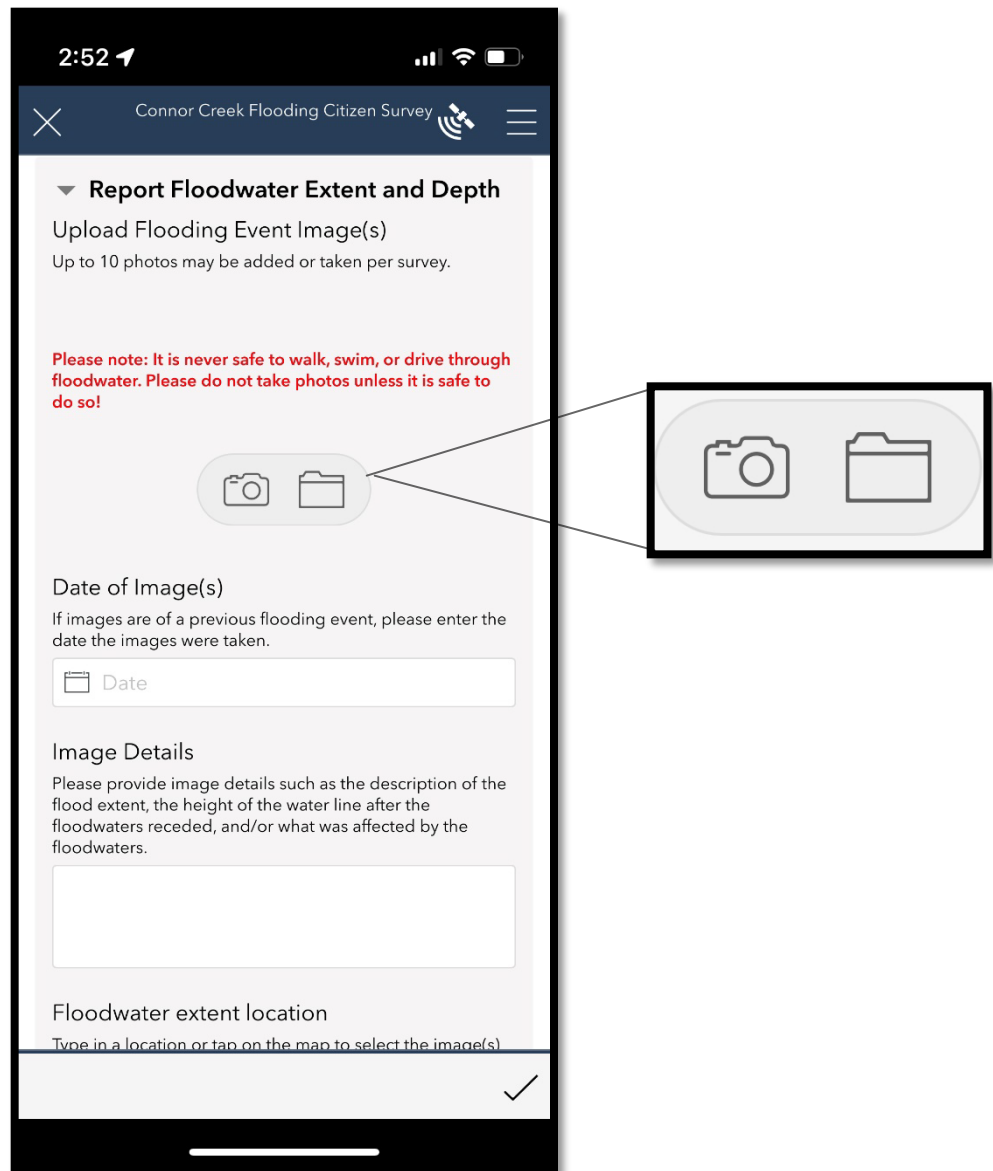
c.)



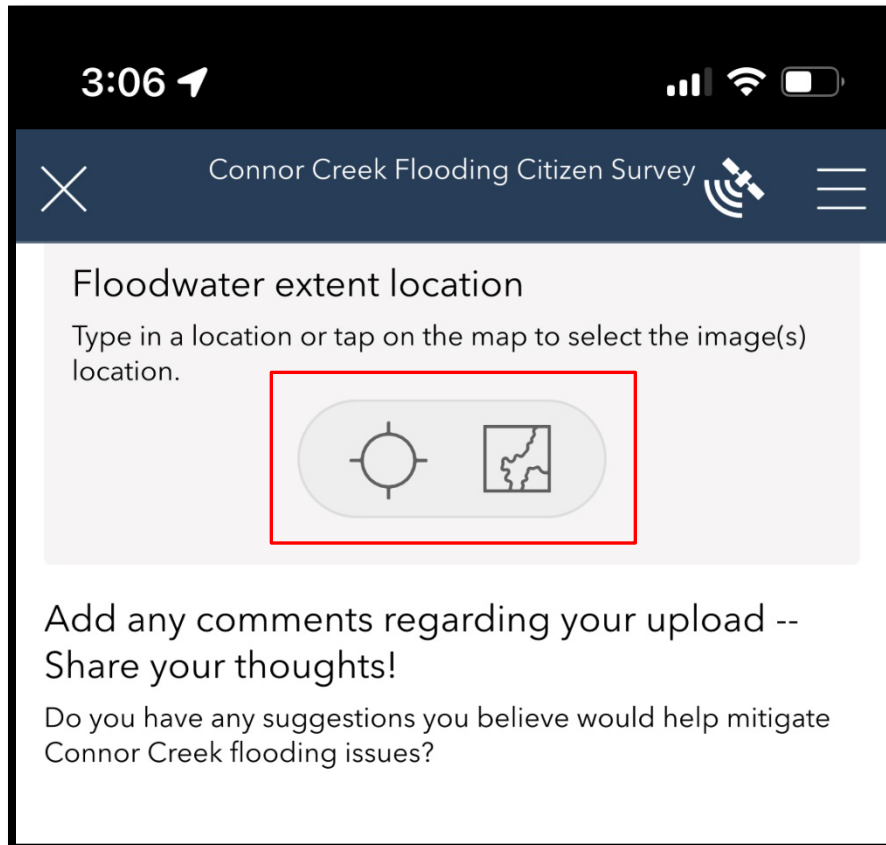
2. Once the survey has been completed once, you can access the survey again by tapping on the survey in the app and tapping the 'Collect' tab:



3. After entering your contact information, you can add images by tapping on the camera icon to access your camera in real time, or the file icon to upload previously taken images:



4. To enter a location for your images, you can click on the 'target' icon to collect an exact location or tap on the 'map' icon to specify a location of your choosing by entering an address or place:



5. Finally, click on the check mark in the lower left corner of the survey and tap 'Send now':

