

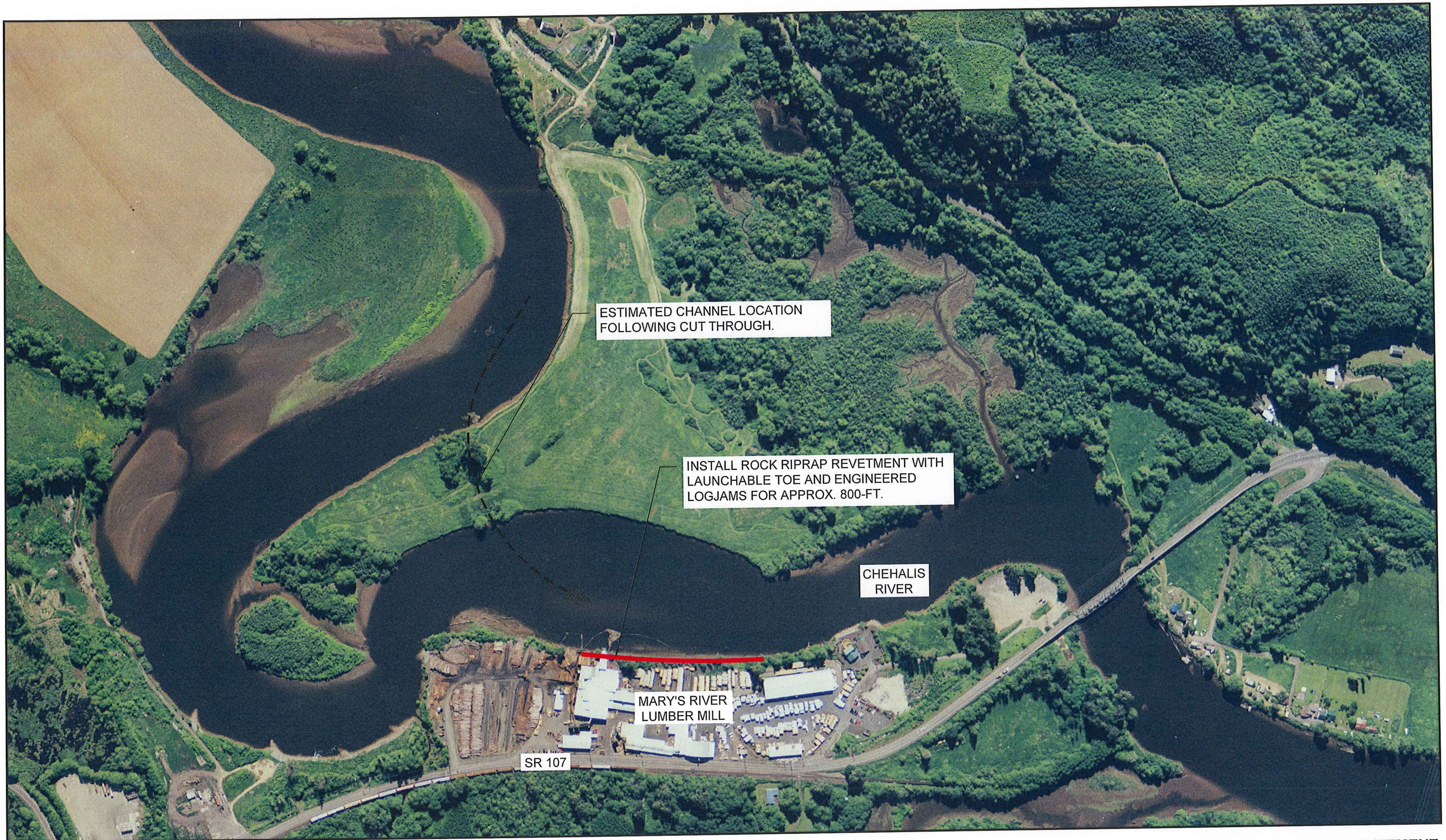
DATE: Mar 13, 2013 FILE: Mary's River Alternatives

**Parametrix**

0 200  
SCALE IN FEET

**OPTION 1 - RELIC CHANNEL  
MARY'S RIVER LUMBER  
CITY OF MONTESANO**





ESTIMATED CHANNEL LOCATION  
FOLLOWING CUT THROUGH.

INSTALL ROCK RIPRAP REVETMENT WITH  
LAUNCHABLE TOE AND ENGINEERED  
LOGJAMS FOR APPROX. 800-FT.

CHEHALIS  
RIVER

MARY'S RIVER  
LUMBER MILL

SR 107



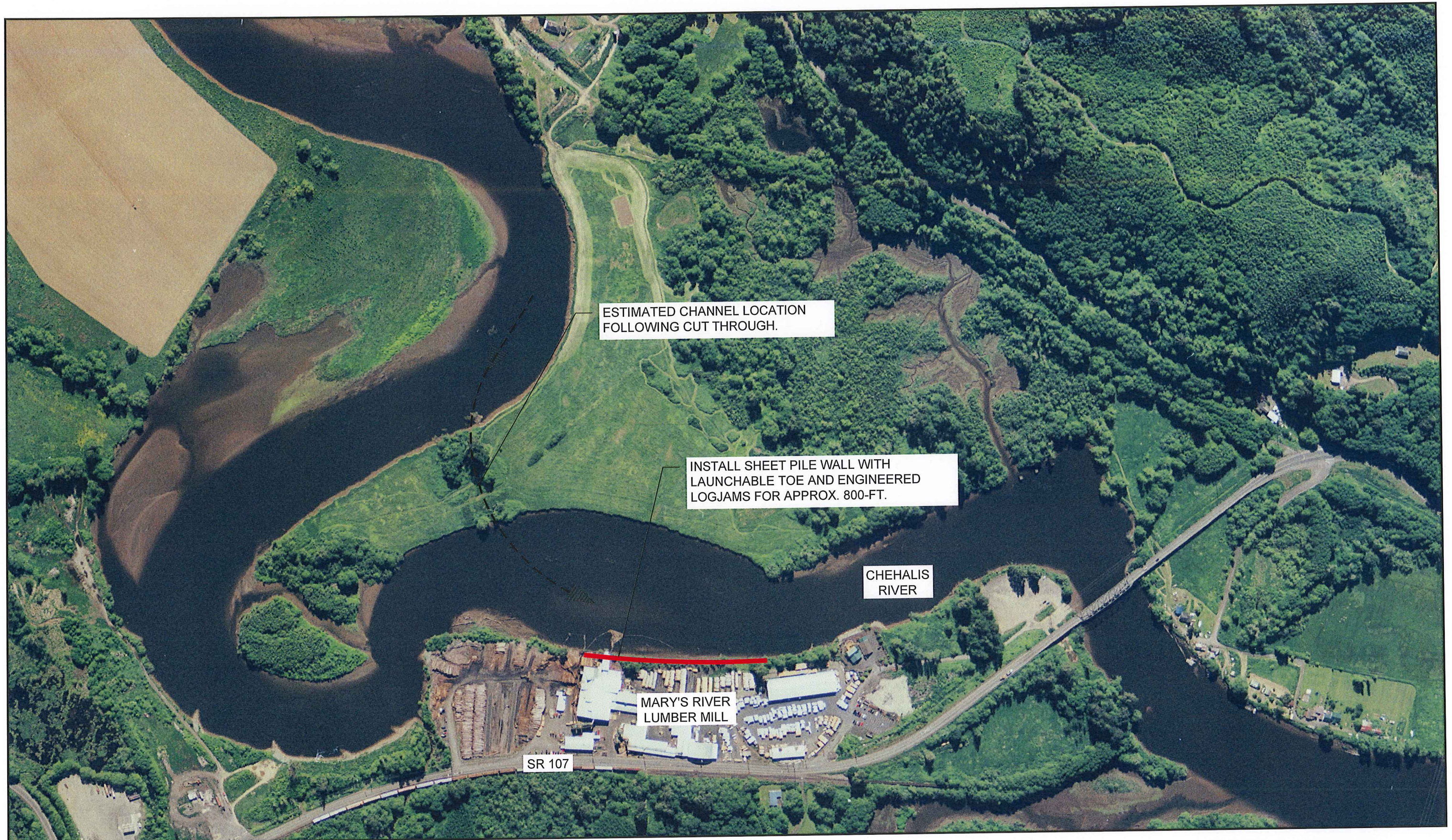
DATE: Mar 13, 2013 FILE: Mary's River Alternatives

**Parametrix**

0 200  
SCALE IN FEET

**OPTION 2A - ROCK REVETMENT  
MARY'S RIVER LUMBER  
CITY OF MONTESANO**





ESTIMATED CHANNEL LOCATION  
FOLLOWING CUT THROUGH.

INSTALL SHEET PILE WALL WITH  
LAUNCHABLE TOE AND ENGINEERED  
LOGJAMS FOR APPROX. 800-FT.

CHEHALIS  
RIVER

MARY'S RIVER  
LUMBER MILL

SR 107



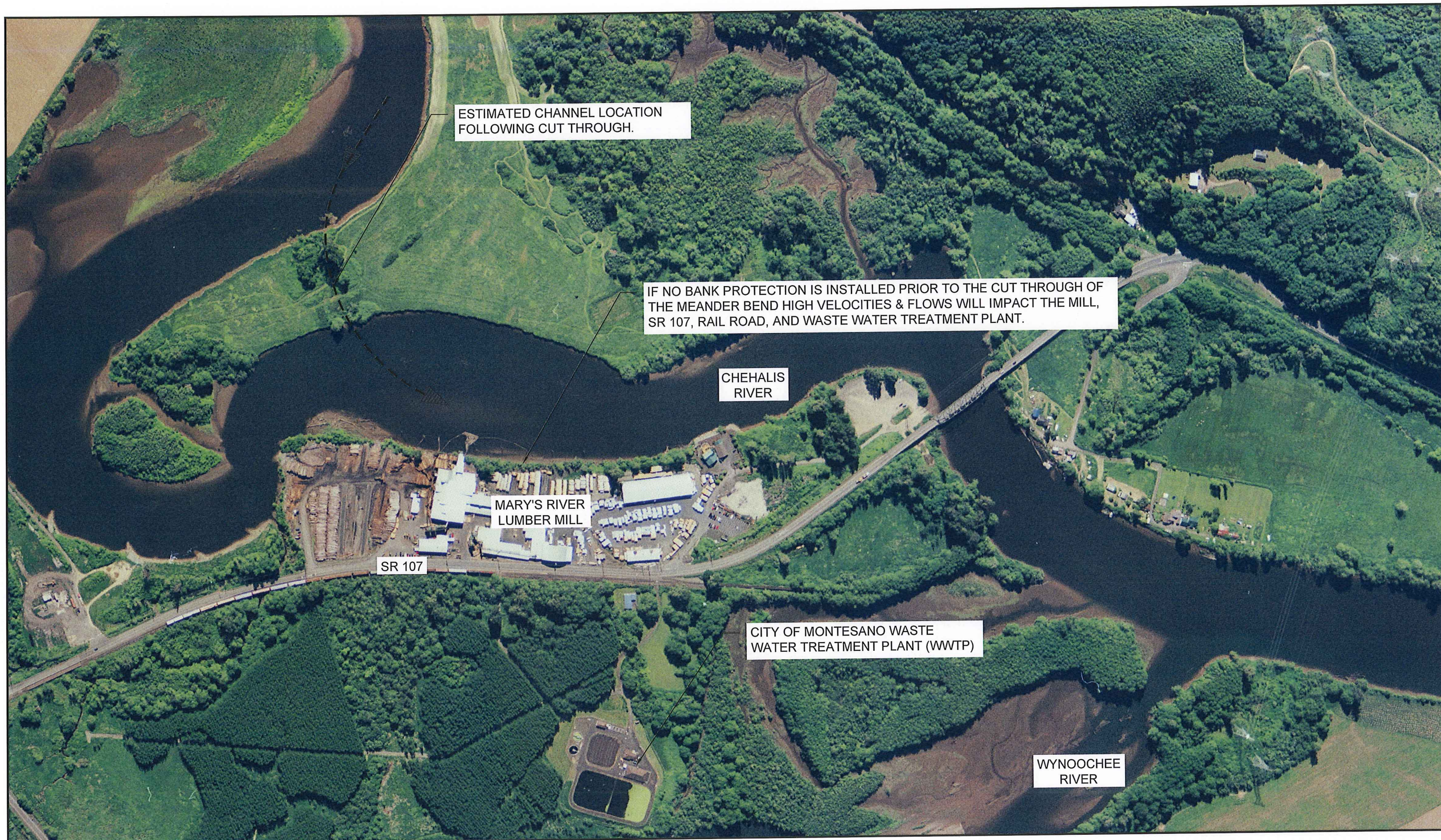
DATE: Mar 13, 2013 FILE: Mary's River Alternatives

**Parametrix**

0 200  
SCALE IN FEET

**OPTION 2B - SHEET PILE  
MARY'S RIVER LUMBER  
CITY OF MONTESANO**





ESTIMATED CHANNEL LOCATION  
FOLLOWING CUT THROUGH.

IF NO BANK PROTECTION IS INSTALLED PRIOR TO THE CUT THROUGH OF  
THE MEANDER BEND HIGH VELOCITIES & FLOWS WILL IMPACT THE MILL,  
SR 107, RAIL ROAD, AND WASTE WATER TREATMENT PLANT.

CHEHALIS  
RIVER

MARY'S RIVER  
LUMBER MILL

SR 107

CITY OF MONTESANO WASTE  
WATER TREATMENT PLANT (WWTP)

WYNOOCHEE  
RIVER