

Hart Crowser
J-4234

APPENDIX A
BORING LOGS AND CONSTRUCTION DATA FOR
MONITORING WELLS MW-1, MW-2, AND MW-3

Key to Exploration Logs

Sample Description

Classification of soils in this report is based on visual field and laboratory observations which include density/consistency, moisture condition, grain size, and plasticity estimates and should not be construed to imply field nor laboratory testing unless presented herein. Visual-manual classification methods of ASTM D 2488 were used as an identification guide.

Soil descriptions consist of the following:

Density/consistency, moisture, color, minor constituents, MAJOR CONSTITUENT, additional remarks.

Density/Consistency

Soil density/consistency in borings is related primarily to the Standard Penetration Resistance.

Soil density/consistency in test pits is estimated based on visual observation and is presented parenthetically on the test pit logs.

SAND or GRAVEL	Standard Penetration Resistance (N) in Blows/Foot	SILT or CLAY	Standard Penetration Resistance (N) in Blows/Foot	Approximate Shear Strength in TSF
Density		Consistency		
Very loose	0 - 4	Very soft	0 - 2	<0.125
Loose	4 - 10	Soft	2 - 4	0.125 - 0.25
Medium dense	10 - 30	Medium stiff	4 - 8	0.25 - 0.5
Dense	30 - 50	Stiff	8 - 15	0.5 - 1.0
Very dense	>50	Very stiff	15 - 30	1.0 - 2.0
		Hard	>30	>2.0

Minor Constituents

Estimated Percentage

Not identified in description	0 - 5
Slightly (clayey, silty, etc.)	5 - 12
Clayey, silty, sandy, gravelly	12 - 30
Very (clayey, silty, etc.)	30 - 50

Moisture

Dry	Little perceptible moisture
Damp	Some perceptible moisture, probably below optimum
Moist	Probably near optimum moisture content
Wet	Much perceptible moisture, probably above optimum

Legends

Sampling Test Symbols

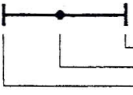
BORING SAMPLES

- ☒ Split Spoon
- ☐ Shelby Tube
- ☐ Cuttings
- ☐ Core Run
- * No Sample Recovery
- P Tube Pushed, Not Driven

TEST PIT SAMPLES

- ☒ Grab (Jar)
- ☐ Bag
- ☐ Shelby Tube

Test Symbols

- GS Grain Size Classification
- CN Consolidation
- TUU Triaxial Unconsolidated Undrained
- TCU Triaxial Consolidated Undrained
- TCD Triaxial Consolidated Drained
- QU Unconfined Compression
- DS Direct Shear
- K Permeability
- PP Pocket Penetrometer
Approximate Compressive Strength in TSF
- TV Torvane
Approximate Shear Strength in TSF
- CBR California Bearing Ratio
- MD Moisture Density Relationship
- AL Atterberg Limits

- PID Photoionization Reading
- CA Chemical Analysis



HARTCROWSER

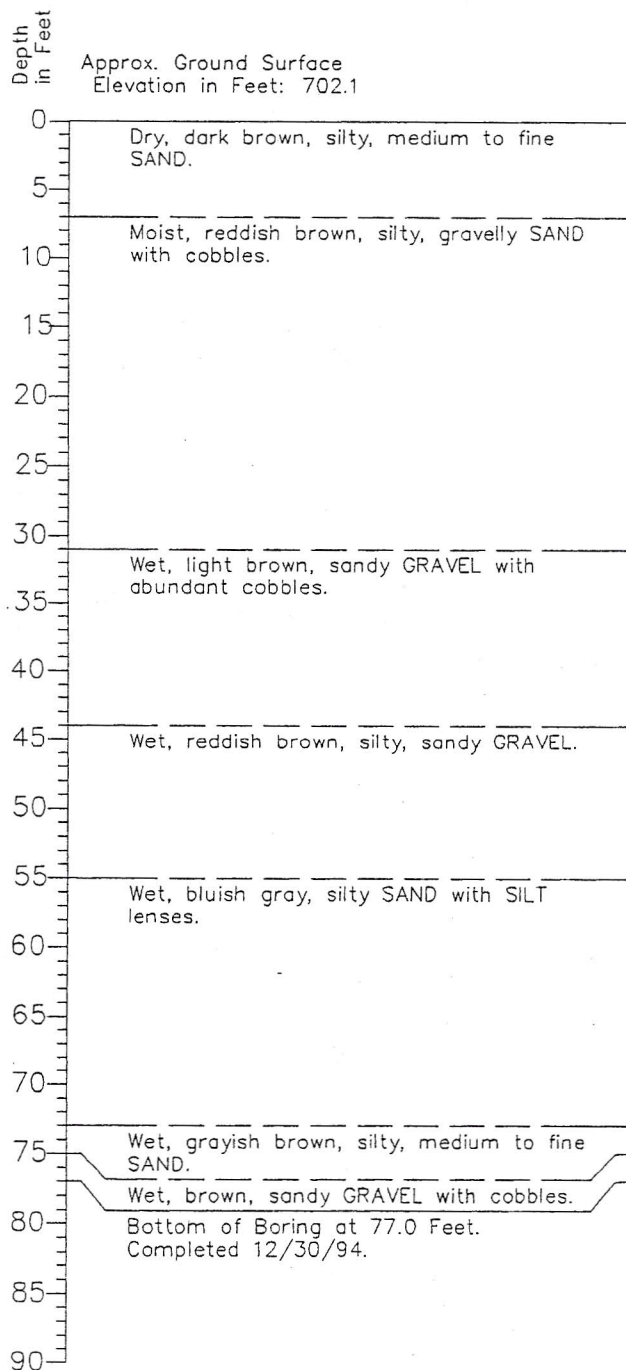
J-4234

1/96

Figure A-1

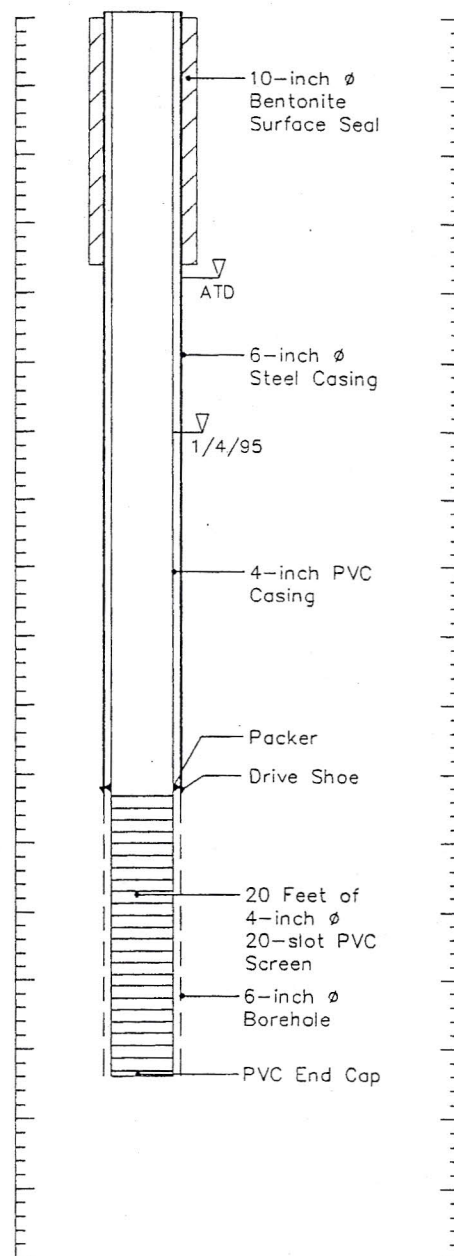
Boring Log and Construction Data for Monitoring Well MW-1

Geologic Log



Monitoring Well Design

Casing Stickup in Feet: 0.4
Top of PVC in Feet 702.55



1. Refer to Figure A-1 for explanation of descriptions and symbols.
2. Soil descriptions and stratum lines are interpretive and actual changes may be gradual.
3. Ground water level, if indicated, is at time of drilling (ATD) or for date specified. Level may vary with time.



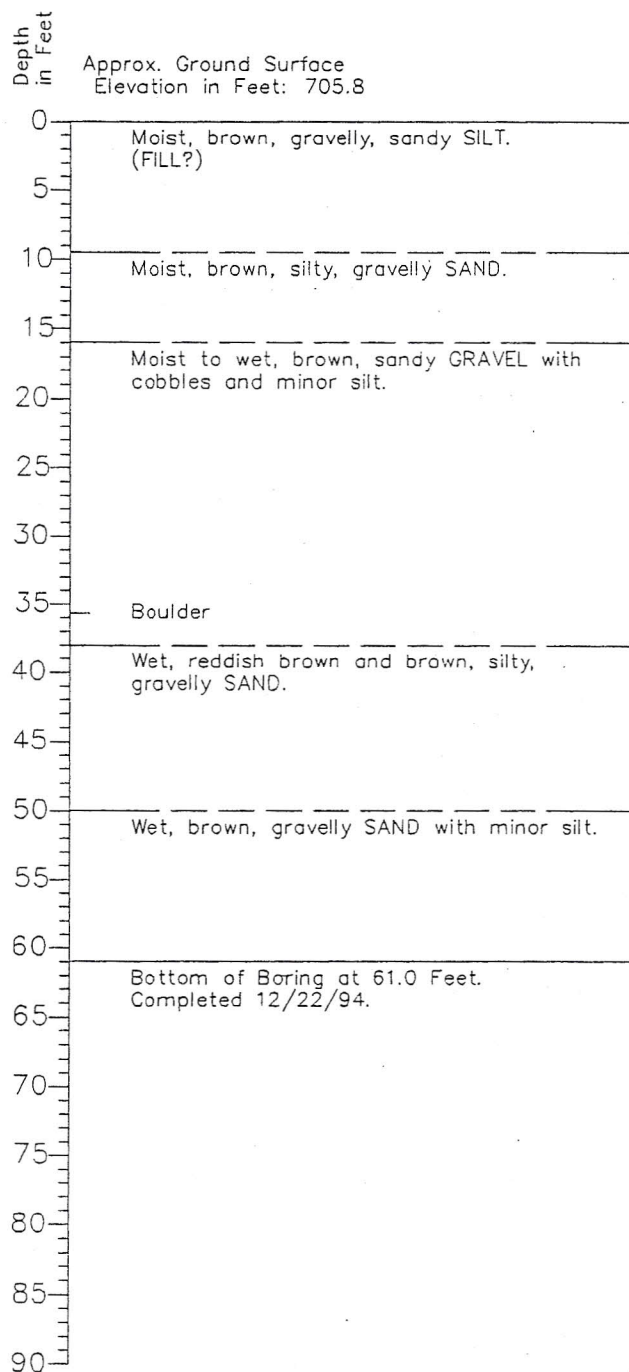
HARTCROWSER

J-4234 12/94

Figure A-2

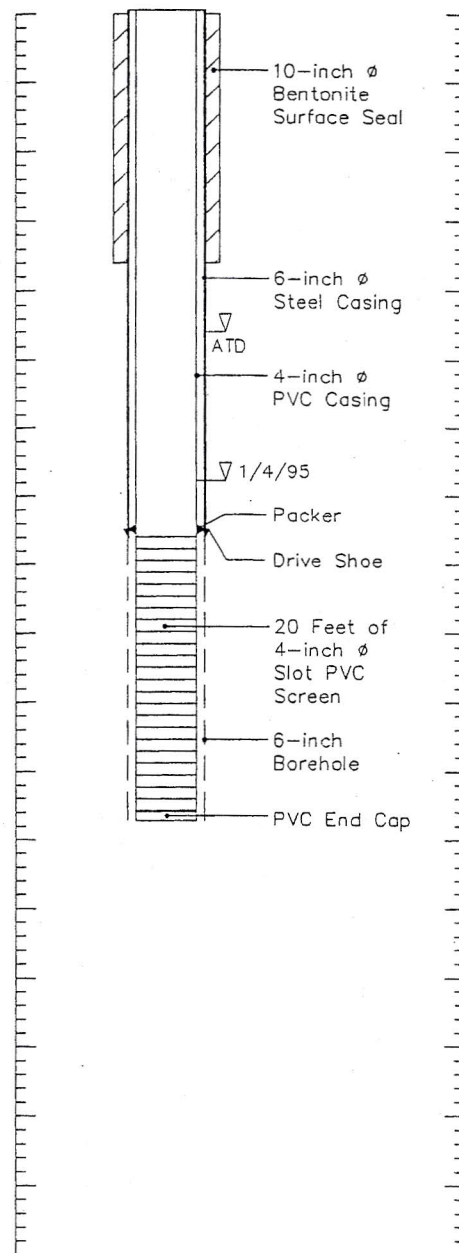
Boring Log and Construction Data for Monitoring Well MW-2

Geologic Log



Monitoring Well Design

Casing Stickup in Feet: 0.3
Top of PVC in Feet 706.08



1. Refer to Figure A-1 for explanation of descriptions and symbols.
2. Soil descriptions and stratum lines are interpretive and actual changes may be gradual.
3. Ground water level, if indicated, is at time of drilling (ATD) or for date specified. Level may vary with time.



HARTCROWSER

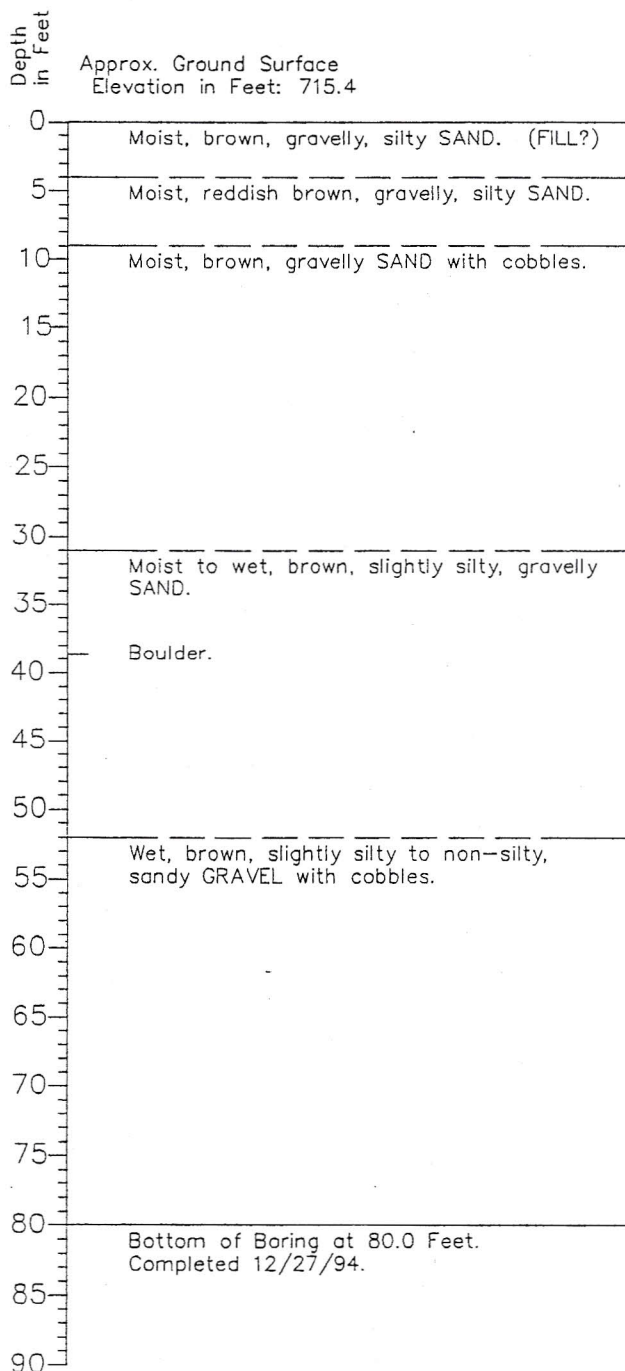
J-4234

12/94

Figure A-3

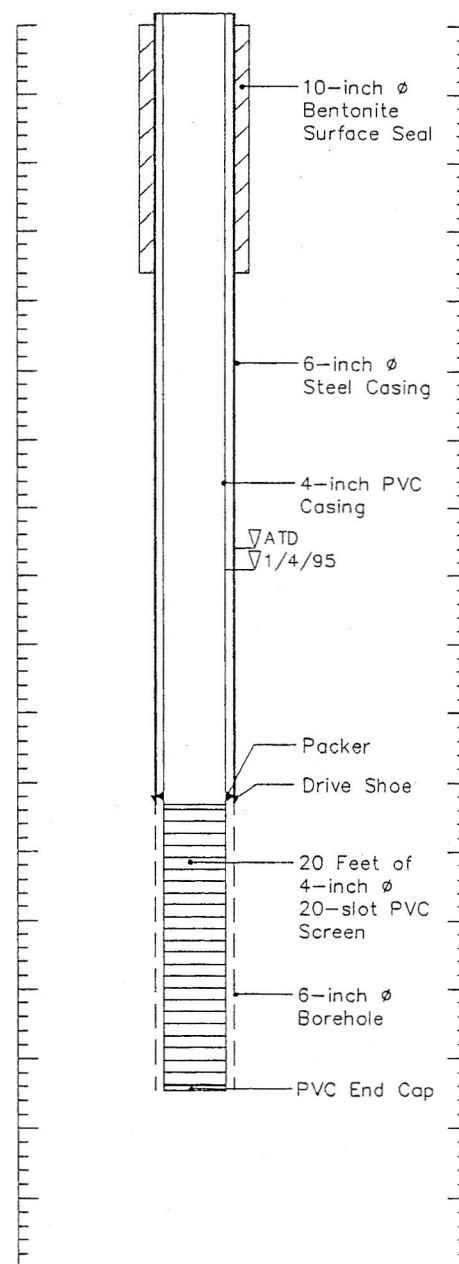
Boring Log and Construction Data for Monitoring Well MW-3

Geologic Log



Monitoring Well Design

Casing Stickup in Feet: 0.8
Top of PVC in Feet 716.22



1. Refer to Figure A-1 for explanation of descriptions and symbols.
2. Soil descriptions and stratum lines are interpretive and actual changes may be gradual.
3. Ground water level, if indicated, is at time of drilling (ATD) or for date specified. Level may vary with time.



HARTCROWSER

J-4234

12/94

Figure A-4

Hart Crowder
14234

APPENDIX B
LABORATORY CERTIFICATES OF ANALYSIS
COFFEY LABORATORIES, INC.

Hart Crowser
J-4234

JANUARY 1995 ANALYTICAL RESULTS



Report Date: January 11, 1995
Job Number: 950105G
PO Number: Yacolt - 4234
Project No: 4234
Project Name: Yacolt

Attention: Steve Germiat
Hart Crowser
1910 Fairview Ave. East
Seattle, WA 98102

Analytical Narrative

The samples were received on 01/05/95 by Coffey Laboratories, Inc. (CLI) Sample Reception personnel under strict chain of custody protocol. The following information was provided at the time of sample reception:

Laboratory Sample ID	Field Identification	Matrix	Collection Date	Collection Time
950105G-1	MW-1	Ground Water	01/04/95	1317
950105G-2	MW-2	Ground Water	01/04/95	1725
950105G-3	MW-3	Ground Water	01/04/95	1605
950105G-4	PW-1	Ground Water	01/04/95	1800

The recommended holding time for each batch of analyses was in accordance with the data quality objectives as specified in the CLI Quality Assurance Plan unless otherwise noted.

Acceptable precision and accuracy were achieved for all analyses associated with this work order as demonstrated by the recoveries of the quality control samples analyzed concurrently with each batch.

The data submitted in this report is for the sole and exclusive use of the above-named client. All samples associated with the work order will be retained a maximum of 15 days from the report date or until the maximum holding time expires. All results pertain only to samples submitted.

Thank you for allowing Coffey Laboratories to be of service to you. If you have questions or need further assistance, please do not hesitate to call our Customer Services Department.

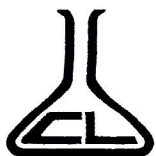
Sincerely,

Rona A. Klueh
Technical Director

RAK/atc

COFFEY LABORATORIES, INC.

12423 N.E. Whitaker Way • Portland, OR • 97230 • (503) 254-1794 • FAX (503) 254-1452



Analytical Data

Hart Crowser

Job Number: 950105G

Page Number: 2 of 5

Lab Sample ID: 950105G-1

Field ID: MW-1

Date/Time: 01/04/95 1317

Matrix: Ground Water

EPA Category: Conventional Parameters

Parameter	Method	Detection Limit	Analytical Result	Units
Chloride	EPA 300.0	0.1	1.4	mg/L
Nitrate	EPA 300.0	0.01	0.04	mg/L
Nitrite	EPA 300.0	0.01	0.03	mg/L
Sulfate	EPA 300.0	0.1	0.6	mg/L
Total Kjeldahl Nitrogen	SM 420	0.2	0.5	mg/L



Hart Crowser

Analytical Data

Job Number: 950105G

Page Number: 3 of 5

Lab Sample ID: 950105G-2

Field ID: MW-2

Date/Time: 01/04/95 1725

Matrix: Ground Water

EPA Category: Conventional Parameters

Parameter	Method	Detection Limit	Analytical Result	Units
Chloride	EPA 300.0	0.1	4.3	mg/L
Nitrate	EPA 300.0	0.01	3.1	mg/L
Nitrite	EPA 300.0	0.01	ND	mg/L
Sulfate	EPA 300.0	0.1	1.1	mg/L
Total Kjeldahl Nitrogen	SM 420	0.2	0.5	mg/L

ND means none detected at or above the detection limit listed.



Analytical Data

Hart Crowser

Job Number: 950105G

Page Number: 4 of 5

Lab Sample ID: 950105G-3

Field ID: MW-3

Date/Time: 01/04/95 1605

Matrix: Ground Water

EPA Category: Conventional Parameters

Parameter	Method	Detection Limit	Analytical Result	Units
Chloride	EPA 300.0	0.1	1.8	mg/L
Nitrate	EPA 300.0	0.01	0.39	mg/L
Nitrite	EPA 300.0	0.01	ND	mg/L
Sulfate	EPA 300.0	0.1	1.2	mg/L
Total Kjeldahl Nitrogen	SM 420	0.2	0.5	mg/L

ND means none detected at or above the detection limit listed.



Analytical Data

Hart Crowser

Job Number: 950105G

Page Number: 5 of 5

Lab Sample ID: 950105G-4

Field ID: PW-1

Date/Time: 01/04/95 1800

Matrix: Ground Water

EPA Category: Conventional Parameters

Parameter	Method	Detection Limit	Analytical Result	Units
Chloride	EPA 300.0	0.1	3.1	mg/L
Nitrate	EPA 300.0	0.01	2.1	mg/L
Nitrite	EPA 300.0	0.01	ND	mg/L
Sulfate	EPA 300.0	0.1	0.5	mg/L
Total Kjeldahl Nitrogen	SM 420	0.2	ND	mg/L

ND means none detected at or above the detection limit listed.

Hart Crowser
J-4234

APRIL 1995 ANALYTICAL RESULTS



Report Date: April 11, 1995
Job Number: 950403AH
PO Number: 4234 - Yacolt
Project No: 4234
Project Name: Yacolt

Steve Germiot
Hart Crowser
1910 Fairview Ave. East
Seattle, WA 98102

Analytical Narrative

The samples were received on 04/03/95 by Coffey Laboratories, Inc. (CLI) Sample Reception personnel under strict chain of custody protocol. The following information was provided at the time of sample reception:

Laboratory Sample ID	Field Identification	Matrix	Collection Date	Collection Time
950403AH-1	MW-1	Ground Water	04/03/95	1300
950403AH-2	MW-2	Ground Water	04/03/95	1415
950403AH-3	MW-3	Ground Water	04/03/95	1115
950403AH-4	MW-20	Ground Water	04/03/95	1415
950403AH-5	PW-1	Ground Water	04/03/95	1450

The recommended holding time for each batch of analyses was in accordance with the data quality objectives as specified in the CLI Quality Assurance Plan unless otherwise noted.

Acceptable precision and accuracy were achieved for all analyses associated with this work order as demonstrated by the recoveries of the quality control samples analyzed concurrently with each batch.

The data submitted in this report is for the sole and exclusive use of the above-named client. All samples associated with the work order will be retained a maximum of 15 days from the report date or until the maximum holding time expires. All results pertain only to samples submitted.

Thank you for allowing Coffey Laboratories to be of service to you. If you have questions or need further assistance, please do not hesitate to call our Customer Services Department.

Sincerely,

Rona A. Klueh
Technical Director

RAK/atc

COFFEY LABORATORIES, INC.

12423 N.E. Whitaker Way • Portland, OR • 97230 • (503) 254-1794 • FAX (503) 254-1452



Analytical Data

Hart Crowser

Job Number: 950403AH

Page Number: 2 of 6

Lab Sample ID: 950403AH-1

Field ID: MW-1

Date/Time: 04/03/95 1300

Matrix: Ground Water

EPA Category: Conventional Parameters

Parameter	Method	Detection Limit	Analytical Result	Units
Chloride	EPA 300.0	0.1	1.3	mg/L
Nitrate	EPA 300.0	0.01	0.03	mg/L
Nitrite	EPA 300.0	0.01	ND	mg/L
Sulfate	EPA 300.0	0.1	0.1	mg/L
Total Kjeldahl Nitrogen	SM 420	0.2	ND	mg/L

ND means none detected at or above the detection limit listed.



Analytical Data

Hart Crowser

Job Number: 950403AH

Page Number: 3 of 6

Lab Sample ID: 950403AH-2

Field ID: MW-2

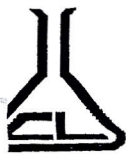
Date/Time: 04/03/95 1415

Matrix: Ground Water

EPA Category: Conventional Parameters

Parameter	Method	Detection Limit	Analytical Result	Units
Chloride	EPA 300.0	0.1	3.9	mg/L
Nitrate	EPA 300.0	0.01	3.1	mg/L
Nitrite	EPA 300.0	0.01	ND	mg/L
Sulfate	EPA 300.0	0.1	0.9	mg/L
Total Kjeldahl Nitrogen	SM 420	0.2	ND	mg/L

ND means none detected at or above the detection limit listed.



Analytical Data

Hart Crowser

Job Number: 950403AH

Page Number: 4 of 6

Lab Sample ID: 950403AH-3

Field ID: MW-3

Date/Time: 04/03/95 1115

Matrix: Ground Water

EPA Category: Conventional Parameters

Parameter	Method	Detection Limit	Analytical Result	Units
Chloride	EPA 300.0	0.1	1.5	mg/L
Nitrate	EPA 300.0	0.01	0.24	mg/L
Nitrite	EPA 300.0	0.01	0.02	mg/L
Sulfate	EPA 300.0	0.1	0.3	mg/L
Total Kjeldahl Nitrogen	SM 420	0.2	ND	mg/L

ND means none detected at or above the detection limit listed.



Analytical Data

Hart Crowser

Job Number: 950403AH

Page Number: 5 of 6

Lab Sample ID: 950403AH-4

Field ID: MW-20

Date/Time: 04/03/95 1415

Matrix: Ground Water

EPA Category: Conventional Parameters

Parameter	Method	Detection Limit	Analytical Result	Units
Chloride	EPA 300.0	0.1	4.1	mg/L
Nitrate	EPA 300.0	0.01	3.1	mg/L
Nitrite	EPA 300.0	0.01	ND	mg/L
Sulfate	EPA 300.0	0.1	1.2	mg/L
Total Kjeldahl Nitrogen	SM 420	0.2	ND	mg/L

ND means none detected at or above the detection limit listed.



Analytical Data

Hart Crowser

Job Number: 950403AH

Page Number: 6 of 6

Lab Sample ID: 950403AH-5

Field ID: PW-1

Date/Time: 04/03/95 1450

Matrix: Ground Water

EPA Category: Conventional Parameters

Parameter	Method	Detection Limit	Analytical Result	Units
Chloride	EPA 300.0	0.1	3.1	mg/L
Nitrate	EPA 300.0	0.01	2.0	mg/L
Nitrite	EPA 300.0	0.01	ND	mg/L
Sulfate	EPA 300.0	0.1	0.5	mg/L
Total Kjeldahl Nitrogen	SM 420	0.2	ND	mg/L

ND means none detected at or above the detection limit listed.

Hart Crowser
J-4234

JULY 1995 ANALYTICAL RESULTS



Report Date: July 10, 1995
Job Number: 950626AN
PO Number: 4234 - Yacolt
Project No: 4234
Project Name: Yacolt

Steve Germiot
Hart Crowser
1910 Fairview Ave. East
Seattle, WA 98102

Analytical Narrative

The samples were received on 06/26/95 by Coffey Laboratories, Inc. (CLI) Sample Reception personnel under strict chain of custody protocol. The following information was provided at the time of sample reception:

Laboratory Sample ID	Field Identification	Matrix	Collection Date	Collection Time
950626AN-1	MW-1	Ground Water	06/26/95	1110
950626AN-2	MW-2	Ground Water	06/26/95	1240
950626AN-3	MW-3	Ground Water	06/26/95	1450
950626AN-4	MW-20	Ground Water	06/26/95	1200
950626AN-5	PW-1	Ground Water	06/26/95	1325

The recommended holding time for each batch of analyses was in accordance with the data quality objectives as specified in the CLI Quality Assurance Plan unless otherwise noted.

Acceptable precision and accuracy were achieved for all analyses associated with this work order as demonstrated by the recoveries of the quality control samples analyzed concurrently with each batch.

The data submitted in this report is for the sole and exclusive use of the above-named client. All samples associated with the work order will be retained a maximum of 15 days from the report date or until the maximum holding time expires. All results pertain only to samples submitted.

Thank you for allowing Coffey Laboratories to be of service to you. If you have questions or need further assistance, please do not hesitate to call our Customer Services Department.

Sincerely,

Rona A. Klueh
Technical Director

RAK/atc

COFFEY LABORATORIES, INC.

12423 N.E. Whitaker Way • Portland, OR • 97230 • (503) 254-1794 • FAX (503) 254-1452



Analytical Data

Hart Crowser

Job Number: 950626AN

Page Number: 2 of 6

Lab Sample ID: 950626AN-1

Field ID: MW-1

Date/Time: 06/26/95 1110

Matrix: Ground Water

EPA Category: Conventional Parameters

Parameter	Method	Detection Limit	Analytical Result	Units
Chloride	EPA 300.0	1.	2.	mg/L
Nitrate	EPA 300.0	0.1	ND	mg/L
Nitrite	EPA 300.0	0.1	ND	mg/L
Sulfate	EPA 300.0	1.	ND	mg/L
Total Kjeldahl Nitrogen	SM 420	0.2	0.5	mg/L

ND means none detected at or above the detection limit listed.



Analytical Data

Hart Crowser

Job Number: 950626AN

Page Number: 3 of 6

Lab Sample ID: 950626AN-2

Field ID: MW-2

Date/Time: 06/26/95 1240

Matrix: Ground Water

EPA Category: Conventional Parameters

Parameter	Method	Detection Limit	Analytical Result	Units
Chloride	EPA 300.0	1.	6.	mg/L
Nitrate	EPA 300.0	0.1	2.6	mg/L
Nitrite	EPA 300.0	0.1	ND	mg/L
Sulfate	EPA 300.0	1.	ND	mg/L
Total Kjeldahl Nitrogen	SM 420	0.2	0.2	mg/L

ND means none detected at or above the detection limit listed.



Analytical Data

Hart Crowser

Job Number: 950626AN

Page Number: 4 of 6

Lab Sample ID: 950626AN-3

Field ID: MW-3

Date/Time: 06/26/95 1450

Matrix: Ground Water

EPA Category: Conventional Parameters

Parameter	Method	Detection Limit	Analytical Result	Units
Chloride	EPA 300.0	1.	2.	mg/L
Nitrate	EPA 300.0	0.1	0.2	mg/L
Nitrite	EPA 300.0	0.1	ND	mg/L
Sulfate	EPA 300.0	1.	ND	mg/L
Total Kjeldahl Nitrogen	SM 420	0.2	0.2	mg/L

ND means none detected at or above the detection limit listed.



Analytical Data

Hart Crowser

Job Number: 950626AN

Page Number: 5 of 6

Lab Sample ID: 950626AN-4

Field ID: MW-20

Date/Time: 06/26/95 1200

Matrix: Ground Water

EPA Category: Conventional Parameters

Parameter	Method	Detection Limit	Analytical Result	Units
Chloride	EPA 300.0	1.	4.	mg/L
Nitrate	EPA 300.0	0.1	2.6	mg/L
Nitrite	EPA 300.0	0.1	ND	mg/L
Sulfate	EPA 300.0	1.	ND	mg/L
Total Kjeldahl Nitrogen	SM 420	0.2	0.5	mg/L

ND means none detected at or above the detection limit listed.



Analytical Data

Hart Crowser

Job Number: 950626AN

Page Number: 6 of 6

Lab Sample ID: 950626AN-5

Field ID: PW-1

Date/Time: 06/26/95 1325

Matrix: Ground Water

EPA Category: Conventional Parameters

Parameter	Method	Detection Limit	Analytical Result	Units
Chloride	EPA 300.0	0.1	3.4	mg/L
Nitrate	EPA 300.0	0.01	2.3	mg/L
Nitrite	EPA 300.0	0.01	ND	mg/L
Sulfate	EPA 300.0	0.1	0.5	mg/L
Total Kjeldahl Nitrogen	SM 420	0.2	0.5	mg/L

ND means none detected at or above the detection limit listed.

Hart Crowser
J-4234

OCTOBER 1995 ANALYTICAL RESULTS



Report Date: October 19, 1995
Job Number: 951004AB
PO Number: Yacolt 4234
Project No: 4234
Project Name: Yacolt

Steve Gumiat
Hart Crowser
1910 Fairview Ave. East
Seattle, WA 98102

Analytical Narrative

The samples were received on 10/04/95 by Coffey Laboratories, Inc. (CLI) Sample Reception personnel under strict chain of custody protocol. The following information was provided at the time of sample reception:

Laboratory Sample ID	Field Identification	Matrix	Collection Date	Collection Time
951004AB-1	MW-1	Ground Water	10/04/95	1115
951004AB-2	MW-3	Ground Water	10/04/95	1215
951004AB-3	MW-10	Ground Water	10/04/95	1050
951004AB-4	PW-1	Ground Water	10/04/95	1250

The recommended holding time for each batch of analyses was in accordance with the data quality objectives as specified in the CLI Quality Assurance Plan unless otherwise noted.

Acceptable precision and accuracy were achieved for all analyses associated with this work order as demonstrated by the recoveries of the quality control samples analyzed concurrently with each batch.

The data submitted in this report is for the sole and exclusive use of the above-named client. All samples associated with the work order will be retained a maximum of 15 days from the report date or until the maximum holding time expires. All results pertain only to samples submitted.

Thank you for allowing Coffey Laboratories to be of service to you. If you have questions or need further assistance, please do not hesitate to call our Customer Services Department.

Sincerely,

Rona A. Klueh
Technical Director

RAK/atc

COFFEY LABORATORIES, INC.

12423 N.E. Whitaker Way • Portland, OR • 97230 • (503) 254-1794 • FAX (503) 254-1452



Analytical Data

Hart Crowser

Job Number: 951004AB

Page Number: 2 of 5

Lab Sample ID: 951004AB-1

Field ID: MW-1

Date/Time: 10/04/95 1115

Matrix: Ground Water

EPA Category: Conventional Parameters

Parameter	Method	Detection Limit	Analytical Result	Units
Chloride	EPA 300.0	0.1	1.3	mg/L
Nitrate	EPA 300.0	0.01	ND	mg/L
Nitrite	EPA 300.0	0.01	ND	mg/L
Sulfate	EPA 300.0	0.1	ND	mg/L
Total Kjeldahl Nitrogen	SM 420	0.2	ND	mg/L

ND means none detected at or above the detection limit listed.



Analytical Data

Hart Crowser

Job Number: 951004AB

Page Number: 3 of 5

Lab Sample ID: 951004AB-2

Field ID: MW-3

Date/Time: 10/04/95 1215

Matrix: Ground Water

EPA Category: Conventional Parameters

Parameter	Method	Detection Limit	Analytical Result	Units
Chloride	EPA 300.0	0.1	1.4	mg/L
Nitrate	EPA 300.0	0.01	0.11	mg/L
Nitrite	EPA 300.0	0.01	ND	mg/L
Sulfate	EPA 300.0	0.1	0.3	mg/L
Total Kjeldahl Nitrogen	SM 420	0.2	ND	mg/L

ND means none detected at or above the detection limit listed.



Analytical Data

Hart Crowser

Job Number: 951004AB

Page Number: 4 of 5

Lab Sample ID: 951004AB-3

Field ID: MW-10

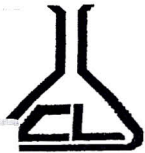
Date/Time: 10/04/95 1050

Matrix: Ground Water

EPA Category: Conventional Parameters

Parameter	Method	Detection Limit	Analytical Result	Units
Chloride	EPA 300.0	0.1	1.4	mg/L
Nitrate	EPA 300.0	0.01	0.06	mg/L
Nitrite	EPA 300.0	0.01	ND	mg/L
Sulfate	EPA 300.0	0.1	0.3	mg/L
Total Kjeldahl Nitrogen	SM 420	0.2	ND	mg/L

ND means none detected at or above the detection limit listed.



Analytical Data

Hart Crowser

Job Number: 951004AB

Page Number: 5 of 5

Lab Sample ID: 951004AB-4

Field ID: PW-1

Date/Time: 10/04/95 1250

Matrix: Ground Water

EPA Category: Conventional Parameters

Parameter	Method	Detection Limit	Analytical Result	Units
Chloride	EPA 300.0	0.1	3.6	mg/L
Nitrate	EPA 300.0	0.01	2.4	mg/L
Nitrite	EPA 300.0	0.01	ND	mg/L
Sulfate	EPA 300.0	0.1	0.6	mg/L
Total Kjeldahl Nitrogen	SM 420	0.2	ND	mg/L

ND means none detected at or above the detection limit listed.



Earth and Environmental Technologies

*Corporate Headquarters
1910 Fairview Avenue East
Seattle, Washington 98102-3699
Fax 206.328.5581
Tel 206.324.9530*

*1201 Jadwin Avenue, Suite 204
Richland, Washington 99352-3431
Fax 509.946.4203
Tel 509.946.4344*

*2550 Denali Street, Suite 705
Anchorage, Alaska 99503-2737
Fax 907.276.2104
Tel 907.276.7475*

*Five Centerpointe Drive, Suite 240
Lake Oswego, Oregon 97035-8652
Fax 503.620.6918
Tel 503.620.7284*

*12 South King Street, Suite 200
Honolulu, Hawaii 96813-4328
Fax 808.523.8876
Tel 808.521.5955*

*353 Sacramento Street, Suite 1140
San Francisco, California 94111-3624
Fax 415.391.2216
Tel 415.391.1885*

*One World Trade Center, Suite 2300
Long Beach, California 90831-2300
Fax 310.495.6361
Tel 310.495.6360*

*501 West Broadway, Suite 800
San Diego, California 92101-3546
Fax 619.231.9754
Tel 619.230.7252*

*Hart Crowser de México, S.A. de C.V.
Calle Camargo No. 32
Col. Hipódromo Condesa
C.P. 06170, México, D.F.
Fax 525.277.11.55
Tel 525.277.11.55*

*Pincock, Allen & Holt
A Division of Hart Crowser, Inc.
274 Union Boulevard, Suite 200
Lakewood, Colorado 80228-1835
Fax 303.987.8907
Tel 303.986.6950*



