

Porter to Elma Flood Mitigation Alternatives Analysis Project

Watershed Science & Engineering

Sargent Engineers

PanGEO

Confluence Consulting

Pacific Geomatic Services

Kickoff Meeting

1 May 2014

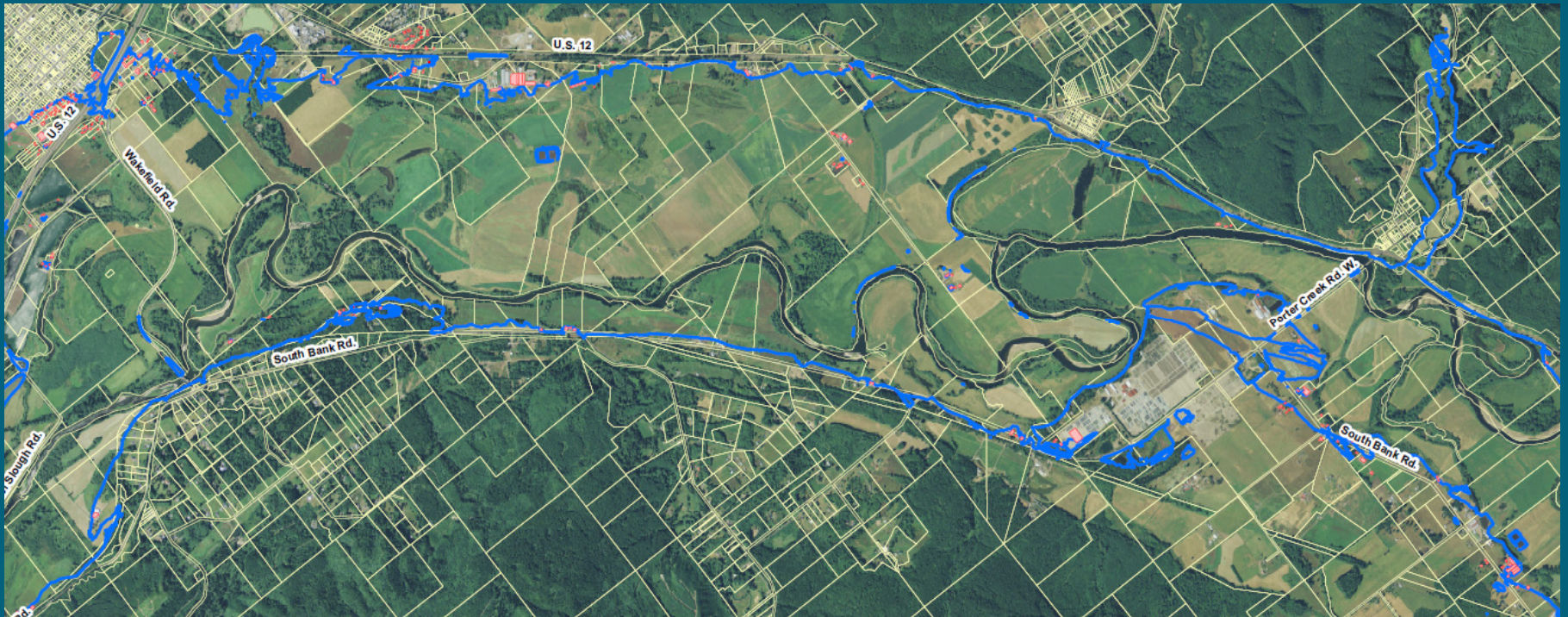
Agenda

- ❖ Introduce Consultant Team
- ❖ Review Project Scope
- ❖ Discuss Existing Flooding Issues in this Reach
- ❖ Discuss Possible Alternatives
- ❖ Questions

Project Team

- ❖ Watershed Science & Engineering
 - ❖ Project Management, Hydraulics, River Engineering
- ❖ Sargent Engineers
 - ❖ Engineering Design, Structures, Cost Estimates
- ❖ PanGEO
 - ❖ Geotechnical Engineering
- ❖ Confluence Consulting
 - ❖ Environmental Issues and Permitting
- ❖ Pacific Geomatic Services
 - ❖ Bathymetric Surveying

Study Reach – Porter to Elma



Wakefield Road to Porter Creek Road

Scope of Work

Task 1 – Project Coordination and Outreach

Task 2 – Hydraulic Modeling and Analysis

Task 3 – Engineering Design and PS&E Documents for Bridge

Task 4 – Geotechnical Engineering Services for Bridge

Task 5 – Critical Areas Review / Permitting Strategy for Bridge

Task 6 – Development and Evaluation of Additional Flood Mitigation Alternatives for Porter to Elma Reach

Task 1 – Project Coordination and Outreach

Kickoff Meeting (tonight)

Existing Conditions Analysis and Preliminary
Bridge Alternatives (June – July)

Wakefield Road Bridge Design Alternative
Analysis Presentation

Additional Flood Mitigation Alternatives
Development Meeting

Alternatives Analysis Presentation and Review

Task 2 – Hydraulic Modeling and Analysis

Bathymetric Survey (already completed)

Hydraulic Model Development (in progress)

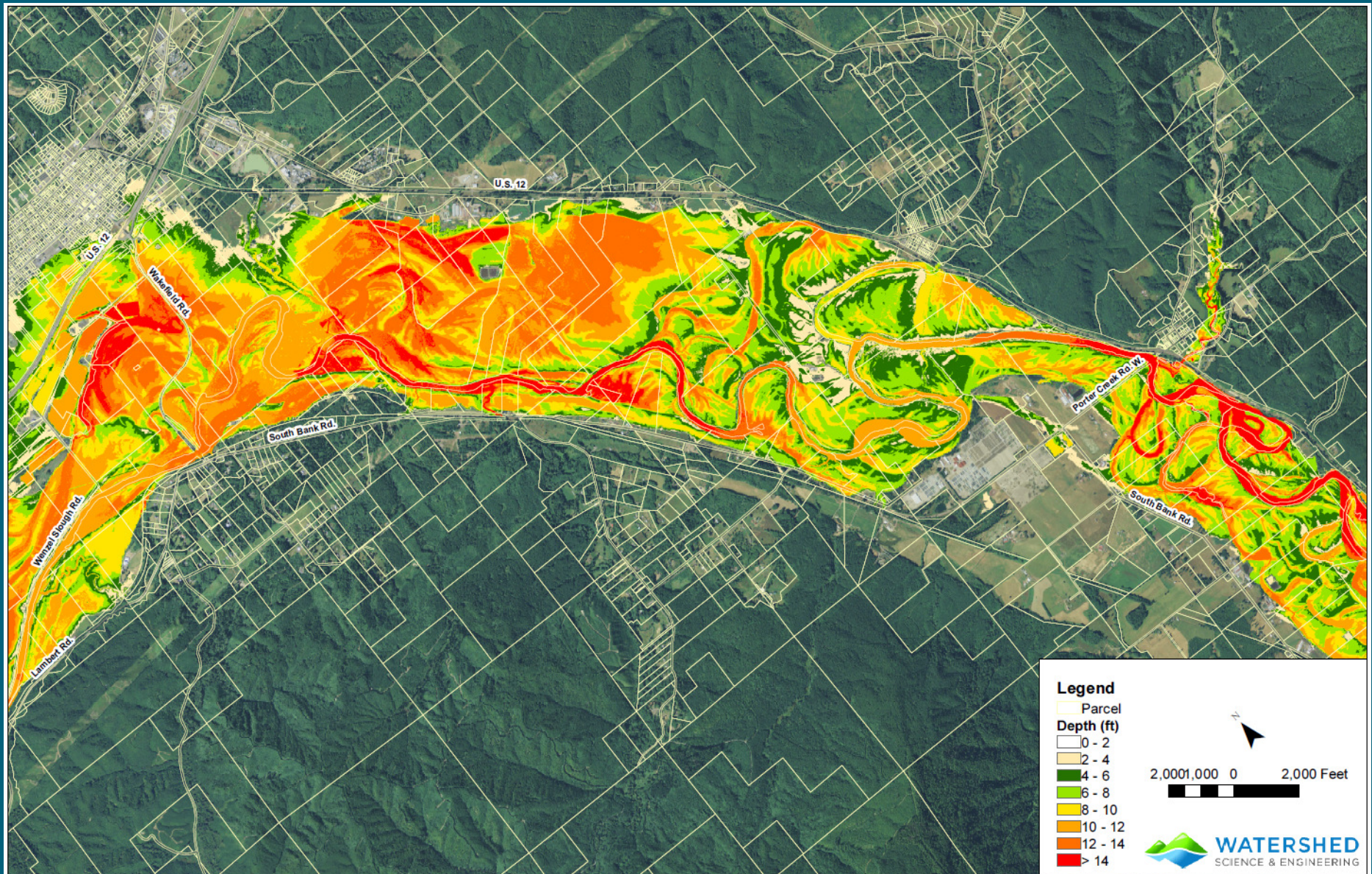
Model Calibration

Existing Conditions Analysis

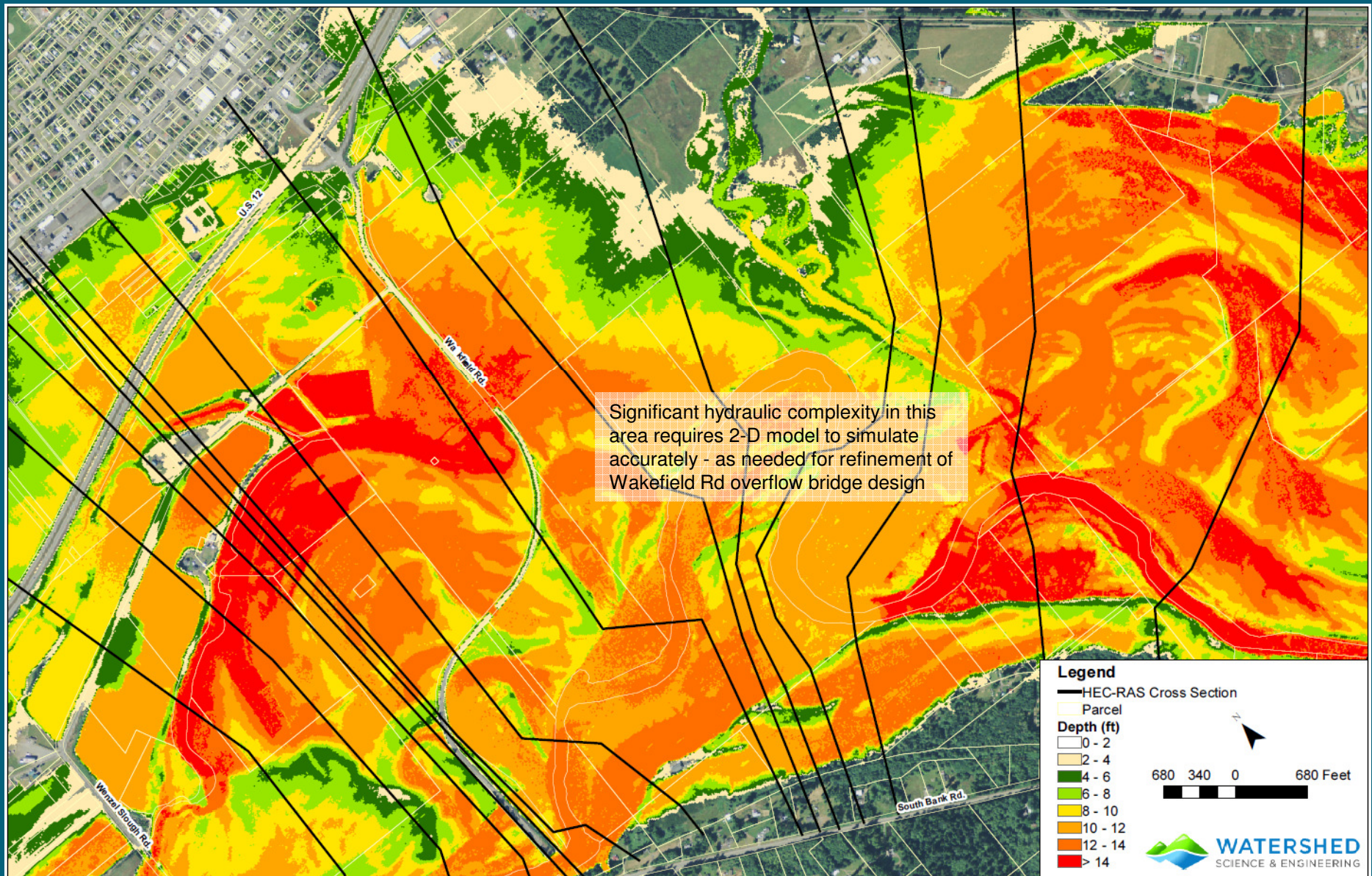
Evaluation of Wakefield Road Bridge Alternatives

Evaluation of other Flood Mitigation Alternatives

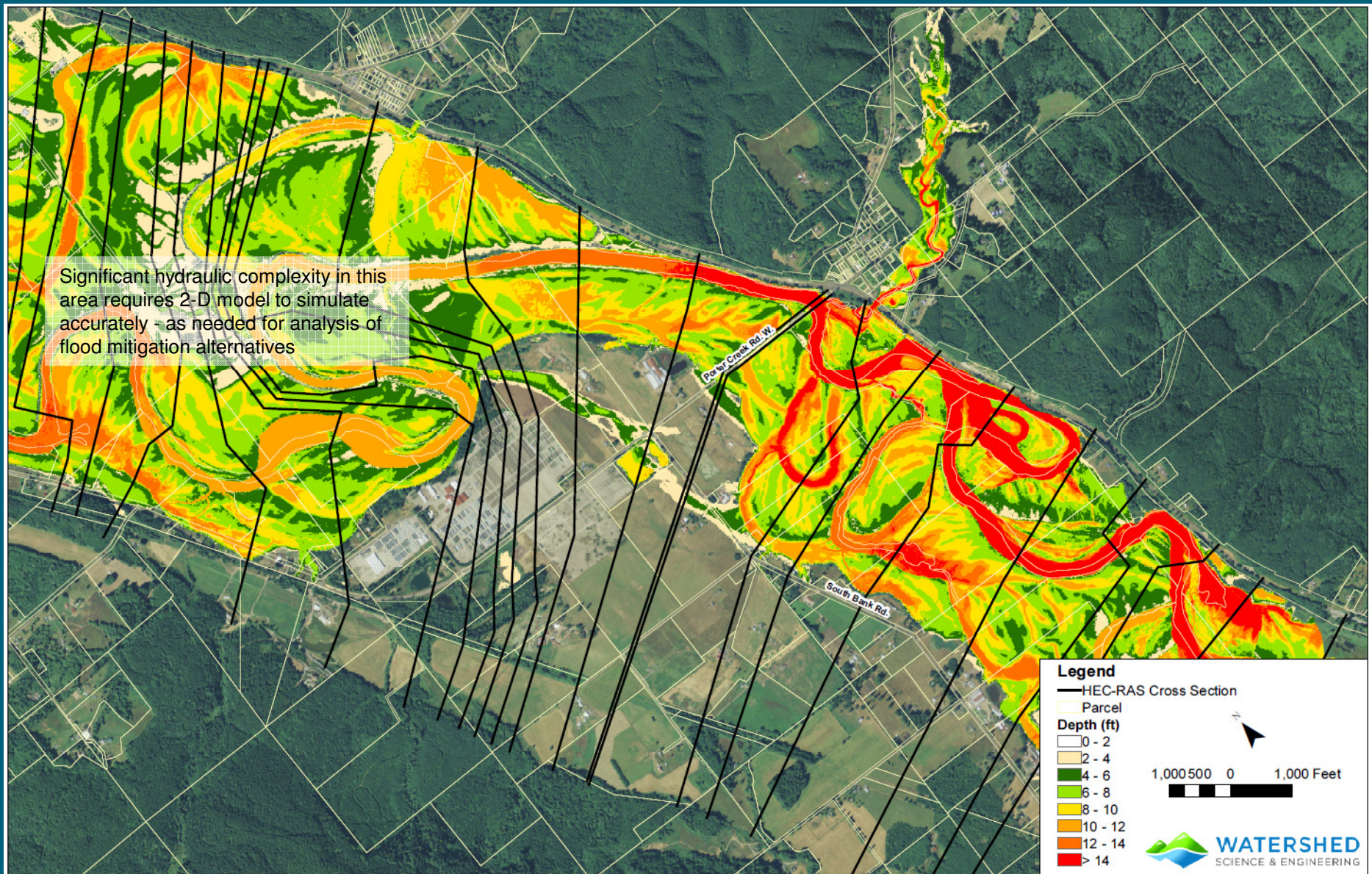
Task 2 – Hydraulic Modeling and Analysis



Task 2 – Hydraulic Modeling and Analysis



Task 2 – Hydraulic Modeling and Analysis



Scope of Work

(Design of S. Bank Road Bridge)

Task 3 – Engineering Design and PS&E Documents

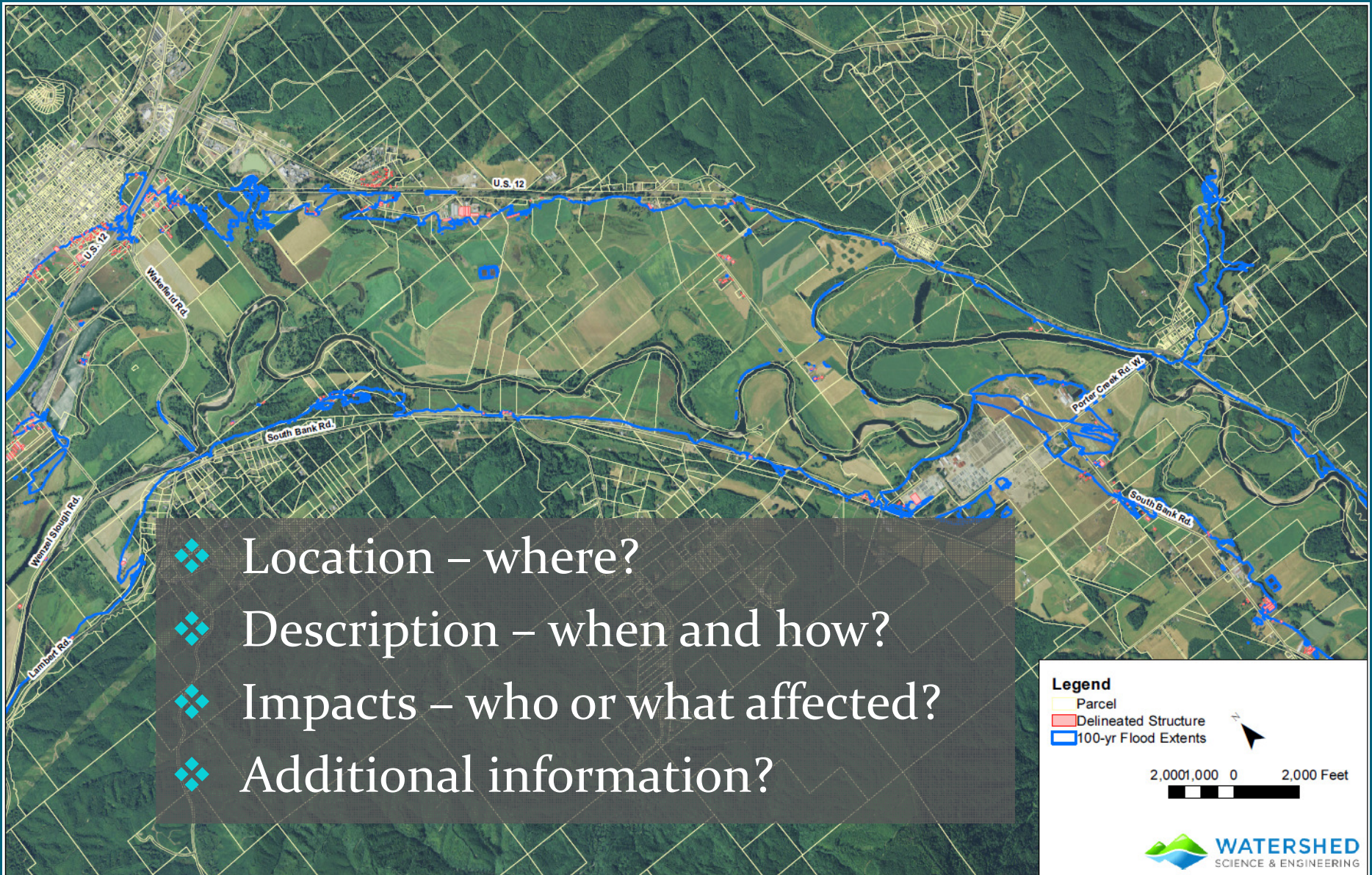
Task 4 – Geotechnical Engineering Services

Task 5 – Critical Areas Review / Permitting Strategy

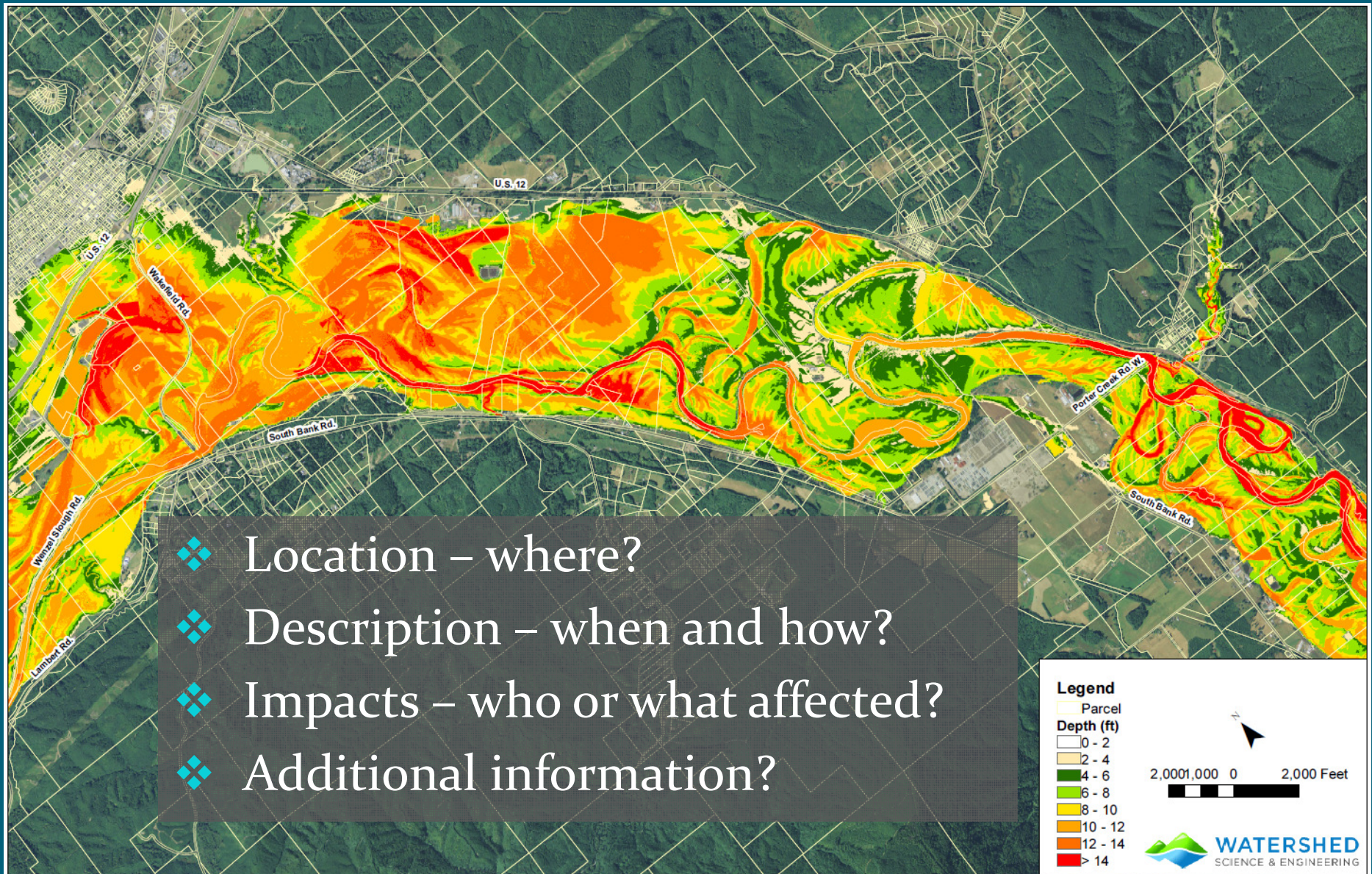
Task 6 –Development and Evaluation of Additional Flood Mitigation Alternatives for Porter to Elma Reach

- ❖ Understand Baseline Flooding Issues
- ❖ Develop List of Potential Alternatives
- ❖ Develop Criteria for Evaluating Alternatives
- ❖ Preliminary Evaluation of Alternatives
- ❖ Alternatives Review Meeting
- ❖ Finalize Evaluation of Alternatives
- ❖ Reporting

Task 6 – Understand Baseline Flooding Issues



Task 6 – Understand Baseline Flooding Issues



Task 6 – Potential Flood Mitigation Alternatives

- ❖ Location
- ❖ Description
- ❖ Has any work been done already?
- ❖ What flood problem does it address?
- ❖ Additional information?

The background is a solid teal color. At the top, there are several wavy, horizontal lines in shades of blue and green, creating a layered, water-like effect.

Questions ?

Larry Karpack
(206) 521-3000
larry@watershedse.com