
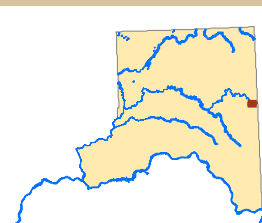


Proposed Environment Designations

DRAFT



— SMP Stream<sup>TWC</sup>

— SMP Waterbody<sup>TWC</sup>

City or Town Limit<sup>Ecy</sup>

**Proposed Environment Designations<sup>1, 2 TWC</sup>**

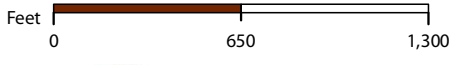
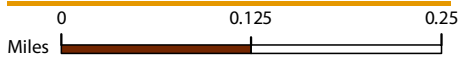
City of Palouse


- High Intensity
- Shoreline Parks
- Shoreline Residential
- Urban Conservancy

Notes:



<sup>1</sup> Shoreline areas waterward of the ordinary high water mark (OHWM) are assigned an Aquatic environment designation.

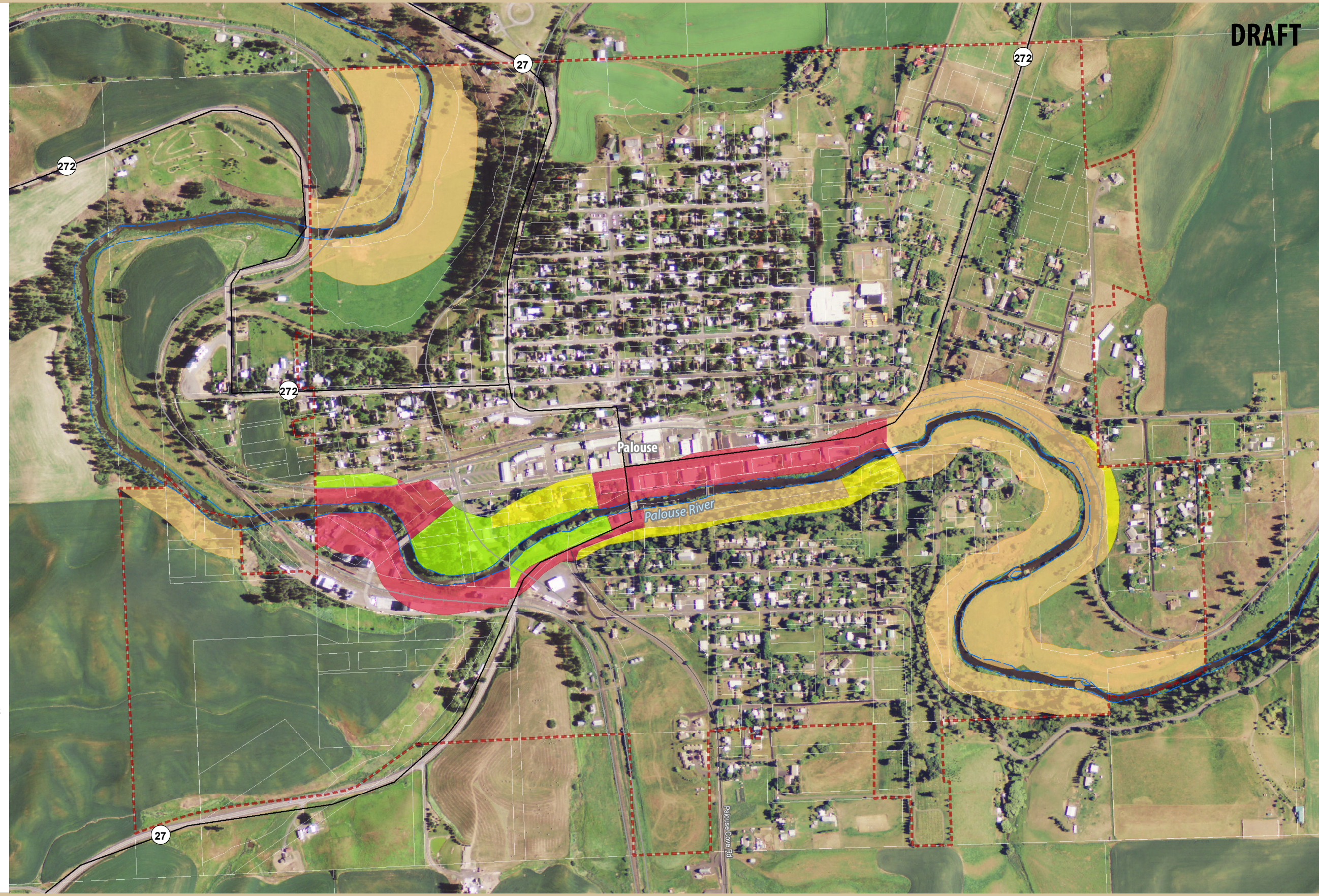
<sup>2</sup> Details of "Rural Industrial/Port" designated areas can be found on County pages 14 and 15.





Original scale = 1:8,000  
@ 11" x 17" layout.  
Please scale accordingly.





All features depicted on this map are approximate. They have not been formally delineated or surveyed and are intended for planning purposes only. Additional site-specific evaluation may be needed to confirm/verify information shown on this map.