

# List of Figures

Figure 1: Shoreline Jurisdiction

Figure 2: 100 Year Floodplain & Wetlands

Figure 3: Soils

Figure 4: Land Cover

Figure 5: Shoreline Modification

Figure 6: Water Quality 303(d) Listed Waterbodies

Figure 7: Shoreline Barriers

Figure 8: WDFW Priority Habitat Fish Species

Figure 9: Reaches

Figure 10: WDFW Priority Habitat Wildlife

Figure 11: Nearshore Vegetation

Figure 12: Public Land

Figure 13: Contaminated Sites

Figure 14: Zoning

Figure 15: Geological Hazards

Figure 16: Public Access













# Shoreline Jurisdiction

Figure 1.4: Cosmopolis

Date: 7/21/2014

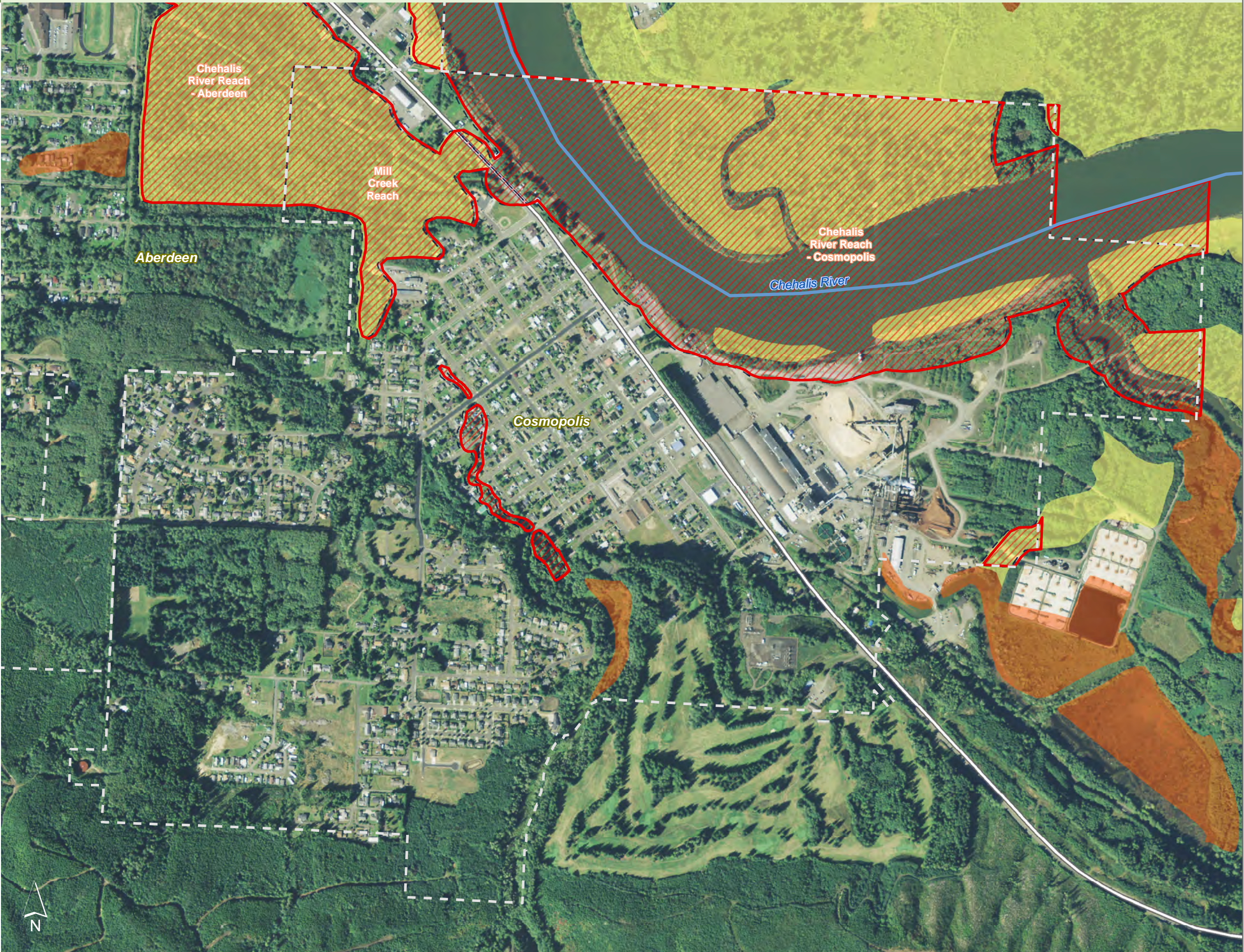
-  Preliminary Shoreline Jurisdiction
-  Reaches
-  City Boundary
-  Associated NWI Wetland
-  Potentially Associated NWI Wetland
-  SMA Rivers
-  SMA Lakes
-  Highways

0 0.25 0.5 Miles  
1:10,000



Source: Grays Harbor County, USFWS NWI (2011), FEMA Preliminary DFIRM (2013), WA DNR, WSDOT, DOE, NRCS NAIP (2013)

Shoreline jurisdiction boundaries depicted on this map are approximate. They have not been formally delineated or surveyed and are intended for planning purposes only. Additional site-specific evaluation may be needed to confirm/verify information shown on this map.





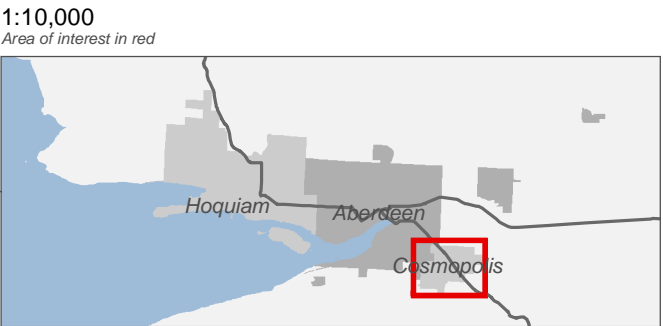
# Floodway, Floodplain, and Wetlands

Figure 2.4: Cosmopolis

Date: 7/21/2014

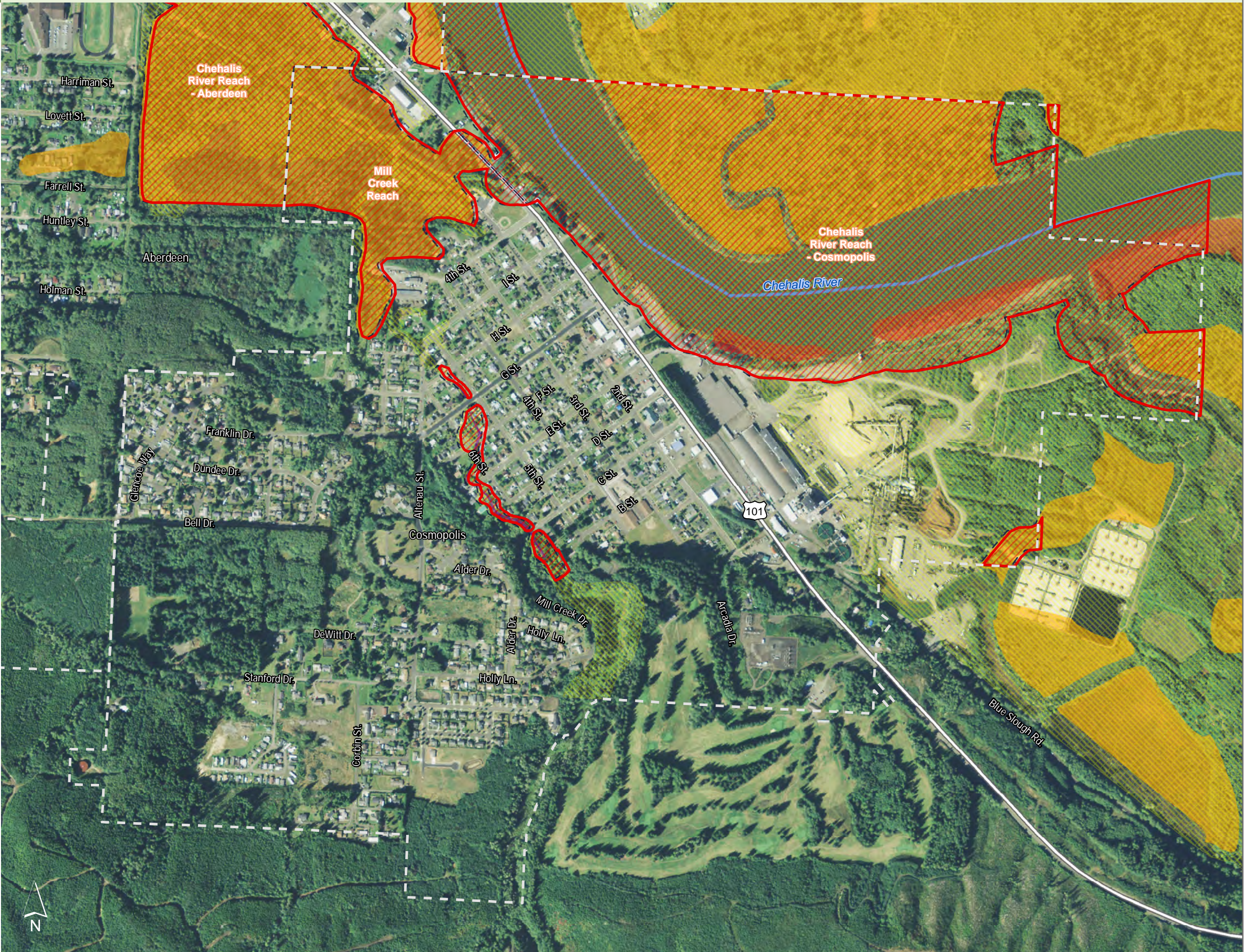
- Preliminary Shoreline Jurisdiction
- Reaches
- City Boundary
- FEMA Preliminary DFIRM**
  - Floodway
  - 100-Year Floodplain
- NWI Wetland by Type**
  - Estuarine and Marine Wetland
  - Freshwater Forested/Shrub Wetland
- SMA Rivers
- SMA Lakes
- Highways

0 0.25 0.5 Miles



Source: Grays Harbor County, USFWS NWI (2011), FEMA Preliminary DFIRM (2013), WA DNR, WSDOT, DOE, NRCS NAIP (2013)

Shoreline jurisdiction boundaries depicted on this map are approximate. They have not been formally delineated or surveyed and are intended for planning purposes only. Additional site-specific evaluation may be needed to confirm/verify information shown on this map.





# Soils

Figure 3.4: Cosmopolis

Date: 7/21/2014

Preliminary Shoreline Jurisdiction

Reaches

City Boundary

SMA Rivers

SMA Lakes

Highways

Other Soils

Calawah silt loam

Ilwaco silt loam

Mopang silt loam

Narel silt loam

Udorthents, level

Hydric Soils

Fluvaquents, tidal

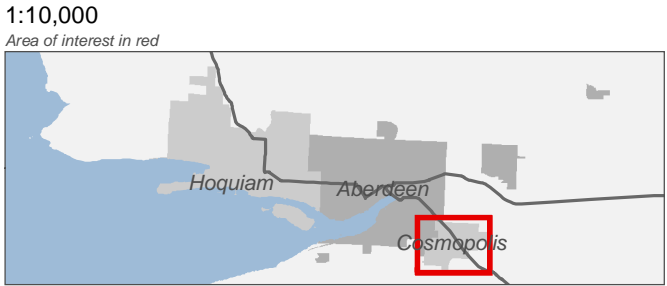
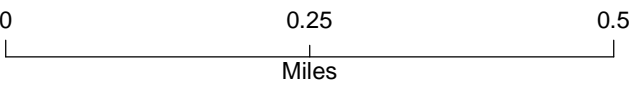
Ocosta silty clay loam

Orcas peat

Palix silt loam

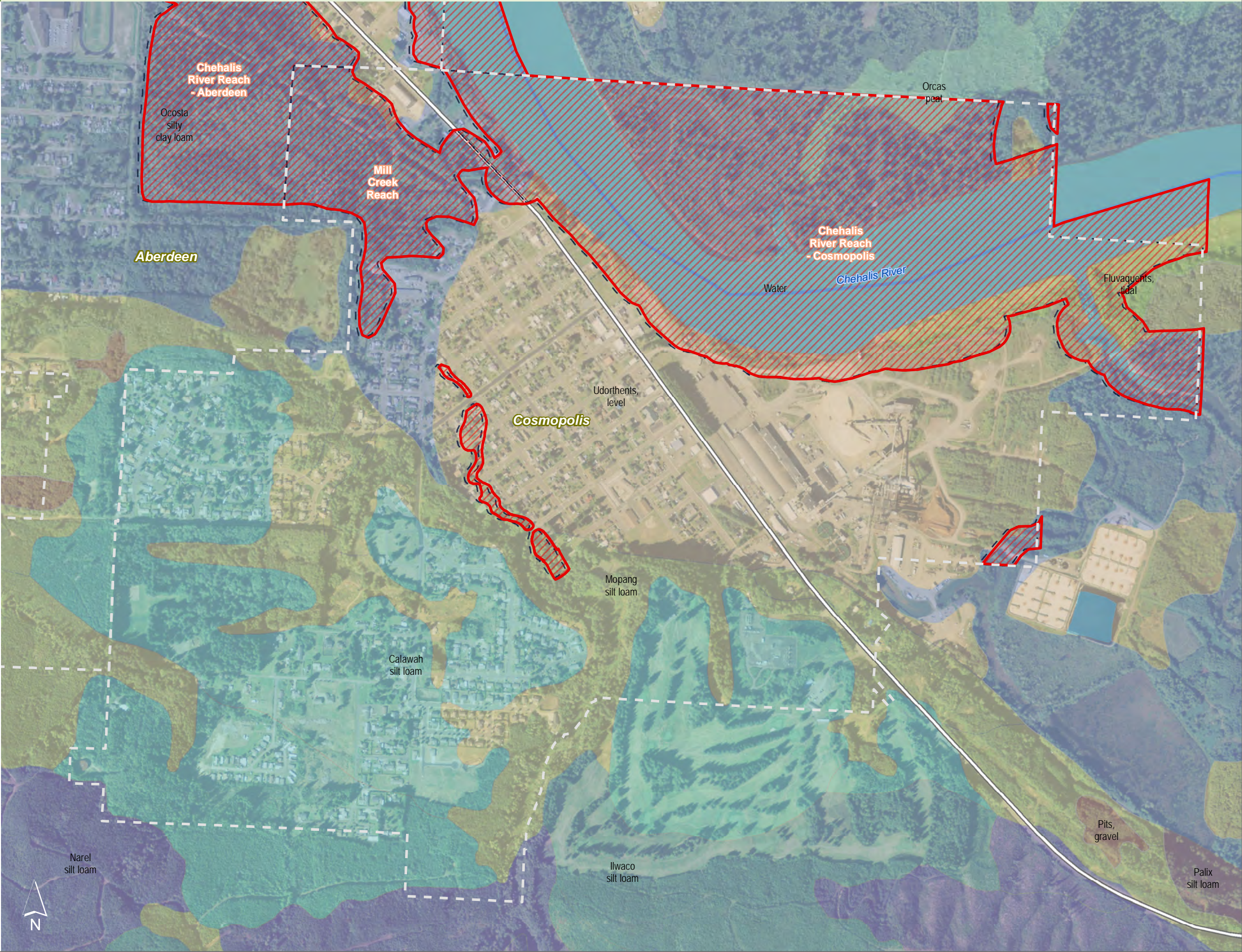
Pits, gravel

Water



Source: Grays Harbor County, USFWS NWI (2011), FEMA Preliminary DFIRM (2013), DNR, WSDOT, Ecology, NRCS NAIP

Shoreline jurisdiction boundaries depicted on this map are approximate. They have not been formally delineated or surveyed and are intended for planning purposes only. Additional site-specific evaluation may be needed to confirm/verify information shown on this map.





# Land Cover

Figure 4.4: Cosmopolis

Date: 7/21/2014

Preliminary Shoreline Jurisdiction

Reaches

City Boundary

SMA Rivers

SMA Lakes

Highway

Land Cover

Open Water

Developed, Open Space

Developed, Low Intensity

Developed, Medium Intensity

Developed, High Intensity

Undeveloped Land

Deciduous Forest

Evergreen Forest

Mixed Forest

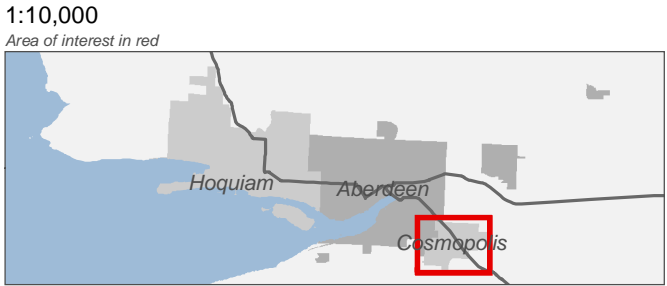
Shrub/Scrub

Herbaceous

Woody Wetlands

Emergent Herbaceous Wetlands

0 0.25 0.5 Miles



Source: USGS NLCD (2006), Grays Harbor Co., GHCG, USFWS NWI, FEMA, WA DNR, WSDOT, DOE, NRCS NAIP

Shoreline jurisdiction boundaries depicted on this map are approximate. They have not been formally delineated or surveyed and are intended for planning purposes only. Additional site-specific evaluation may be needed to confirm/verify information shown on this map.

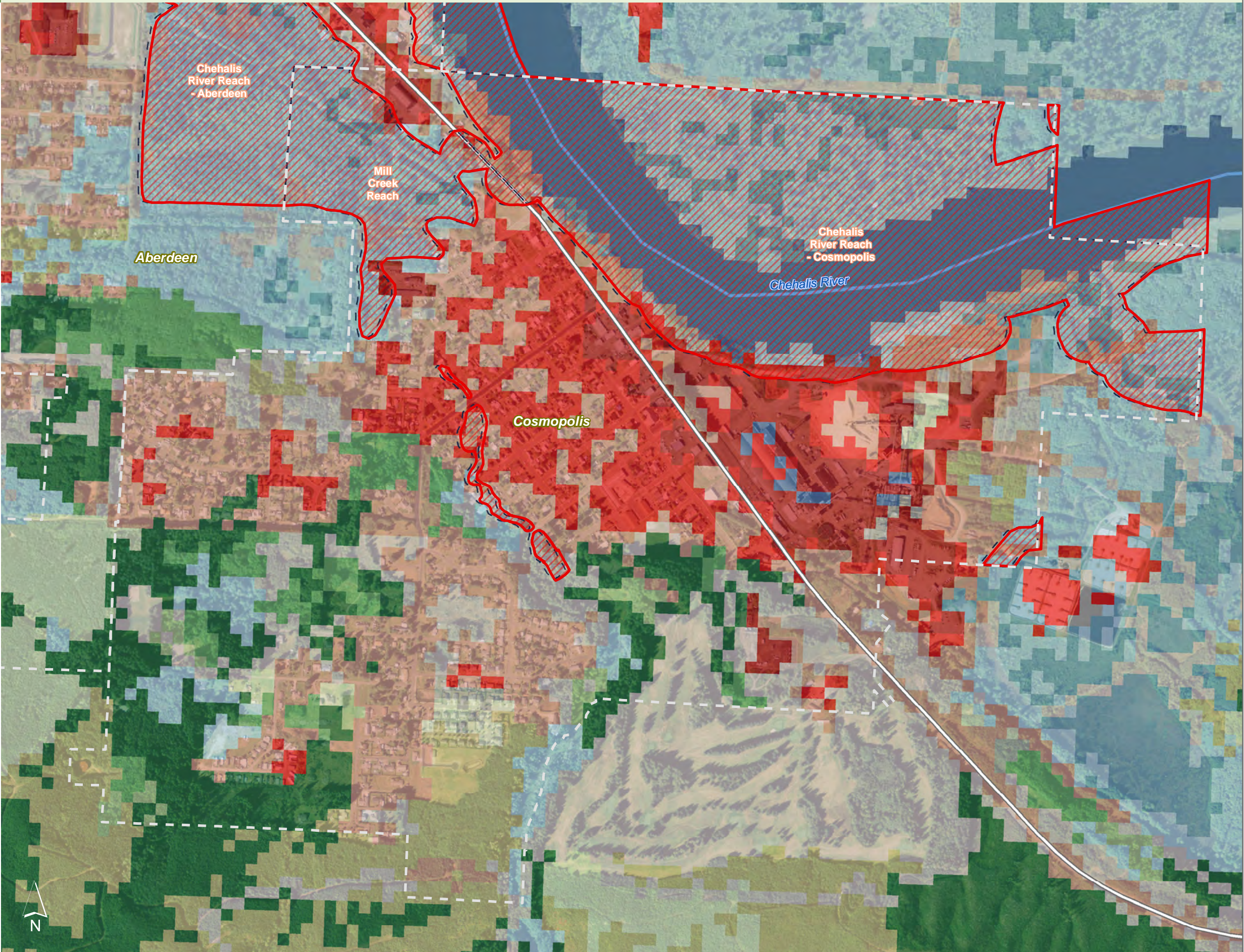
CITY OF ABERDEEN

CITY OF COSMOPOLIS

CITY OF HOQUIAM

AHBL

HERRERA













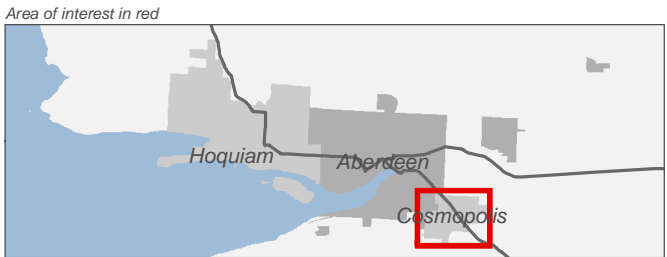
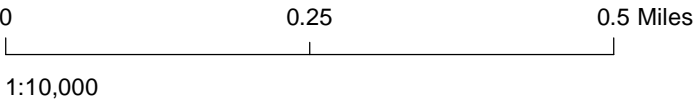


# Shoreline Modification

Figure 5.4: Cosmopolis

Date: 7/21/2014

-  Preliminary Shoreline Jurisdiction
-  Reaches
-  City Boundary
-  SMA Rivers
-  SMA Lakes
-  Highways
-  Levees
-  Dams
- Shoreline Modified**
  -  Armored
  -  Over Water Structure



Source: Grays Harbor County, USFWS NWI (2011), FEMA Preliminary DFIRM (2013), WA DNR, WSDOT, DOE, NRCS NAIP (2013)

Shoreline jurisdiction boundaries depicted on this map are approximate. They have not been formally delineated or surveyed and are intended for planning purposes only. Additional site-specific evaluation may be needed to confirm/verify information shown on this map.





# Water Quality 303(d) Listed Waterbodies

Figure 6.4: Cosmopolis

Date: 7/21/2014

- Preliminary Shoreline Jurisdiction
- Reaches
- City Boundary
- SMA Rivers
- SMA Lakes
- Highway

303d Waterbodies by Category

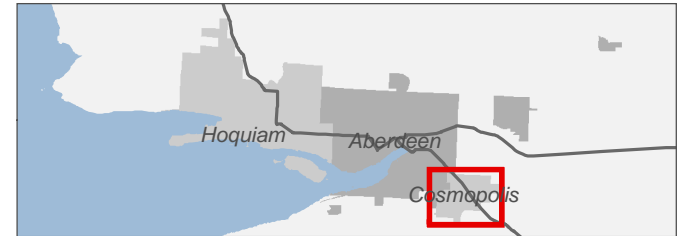
1	4A	4C
2	4B	5

- 303d Categories:
- Category 1: Meets tested standards
  - Category 2: Waters of concern
  - Category 4: Polluted waters that do not require a TMDL
    - 4a: Approved TMDL control plan in place
    - 4b: Approved pollution control plan in place
    - 4c: Cause cannot be addressed through TMDL
  - Category 5: Polluted waters that require a TMDL

0 0.25 0.5 Miles

1:10,000

Area of interest in red



Source: Grays Harbor County, USFWS NWI (2011), FEMA Preliminary DFIRM (2013), DNR, WSDOT, Ecology, NRCS NAIP

Shoreline jurisdiction boundaries depicted on this map are approximate. They have not been formally delineated or surveyed and are intended for planning purposes only. Additional site-specific evaluation may be needed to confirm/verify information shown on this map.





# Surface Water System

Figure 7.4: Cosmopolis

Date: 7/21/2014

- Preliminary Shoreline Jurisdiction
- Reaches
- City Boundary
- SMA Lakes
- SMA Rivers
- Highways

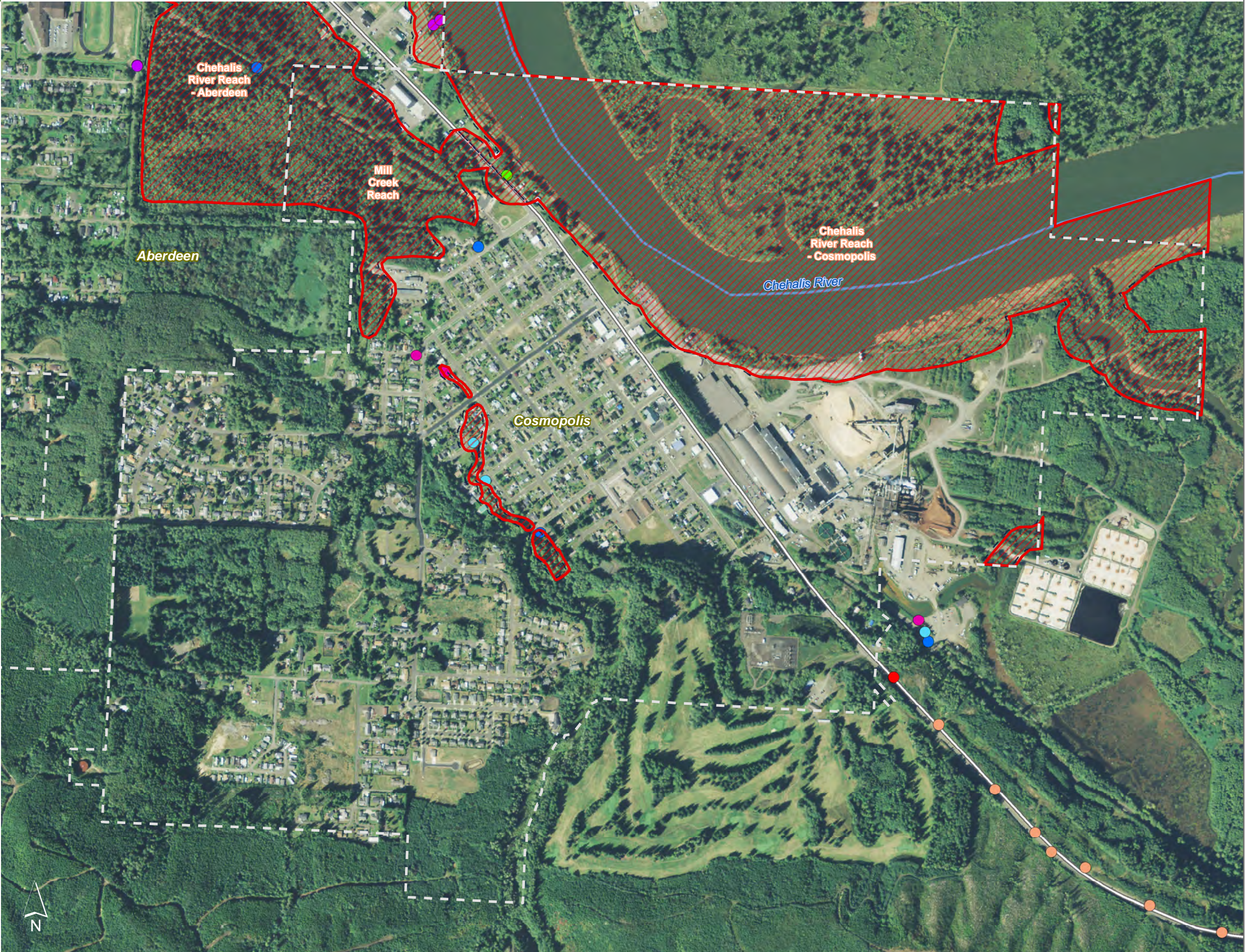
- Road Crossing - Blockage Type**
- N/A
  - None
  - Partial
  - Total
  - Unknown
- Tide Gates**
- City of Aberdeen
  - City of Hoquiam
  - Tide Gate per WDFW

0 0.25 0.5 Miles



Source: Grays Harbor County, USFWS NWI, FEMA, WA DNR, WSDOT, DOE, NRCS NAIP

Shoreline jurisdiction boundaries depicted on this map are approximate. They have not been formally delineated or surveyed and are intended for planning purposes only. Additional site-specific evaluation may be needed to confirm/verify information shown on this map.



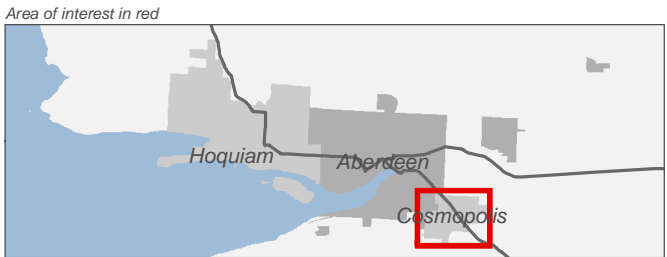
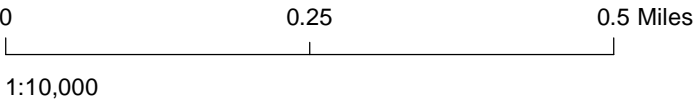


# WDFW Priority Habitat Fish Species

Figure 8.4: Cosmopolis

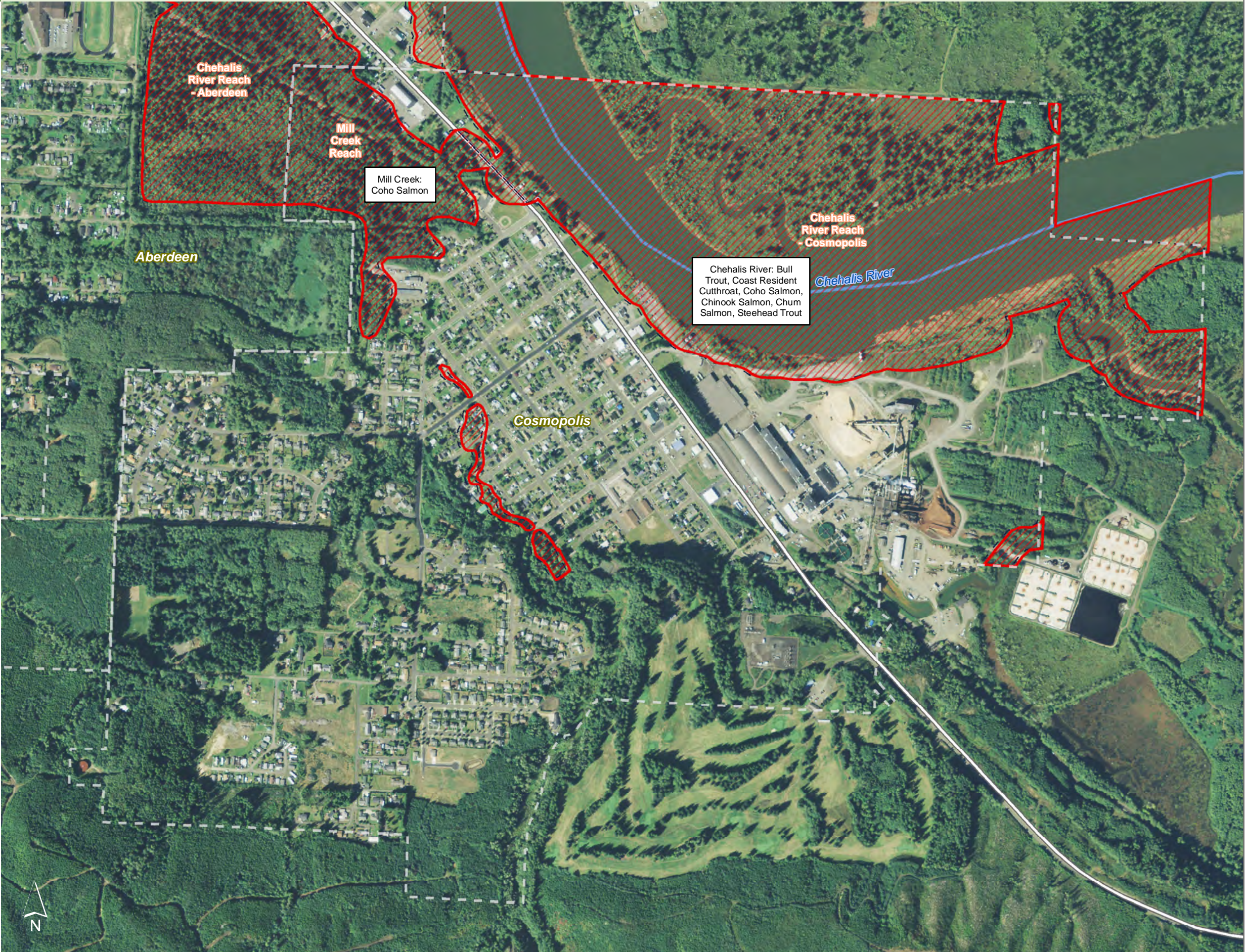
Date: 7/21/2014

-  Preliminary Shoreline Jurisdiction
-  Reaches
-  City Boundary
-  SMA Rivers
-  SMA Lakes
-  Highways
- Fish Species Present



Source: Grays Harbor County, USFWS NWI (2011), FEMA Preliminary DFIRM (2013), WA DNR, WSDOT, DOE, NRCS NAIP (2013)

Shoreline jurisdiction boundaries depicted on this map are approximate. They have not been formally delineated or surveyed and are intended for planning purposes only. Additional site-specific evaluation may be needed to confirm/verify information shown on this map.










# Shoreline Reaches




Figure 9.4: Cosmopolis

Date: 7/21/2014


-  Preliminary Shoreline Jurisdiction
-  City Boundary
-  SMA Rivers
-  SMA Lakes
-  Highways

**Shoreline Reach**

**Cosmopolis**

-  Chehalis River Reach - North
-  Chehalis River Reach - South
-  Mill Creek Reach

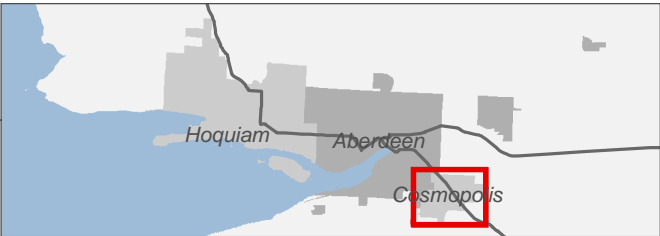
**Aberdeen**

-  Chehalis River Reach

0 0.25 0.5 Miles

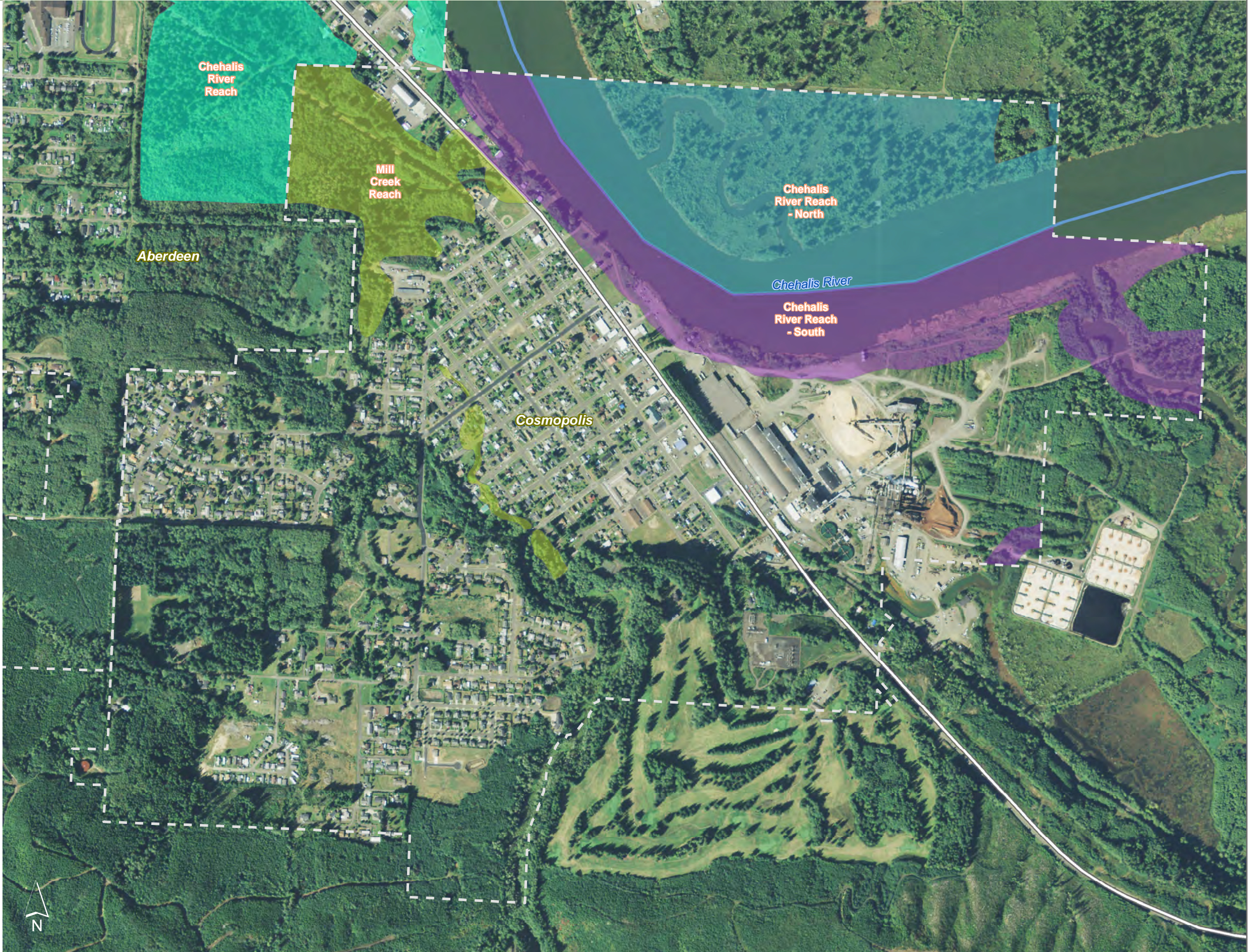
1:10,000

Area of interest in red



Source: Grays Harbor County, USFWS NWI (2011), FEMA Preliminary DFIRM (2013), WA DNR, WSDOT, DOE, NRCS NAIP (2013)

Shoreline jurisdiction boundaries depicted on this map are approximate. They have not been formally delineated or surveyed and are intended for planning purposes only. Additional site-specific evaluation may be needed to confirm/verify information shown on this map.












# WDFW Priority Habitat Wildlife

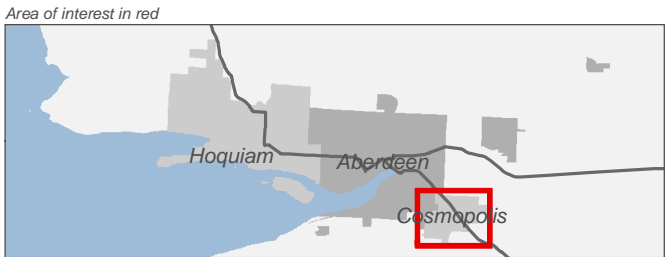
Figure 10.4: Cosmopolis

Date: 7/21/2014

-  Preliminary Jurisdiction
-  Reaches
-  City Boundary
-  SMA Rivers
-  SMA Lakes
-  Highways
-  Wood Duck

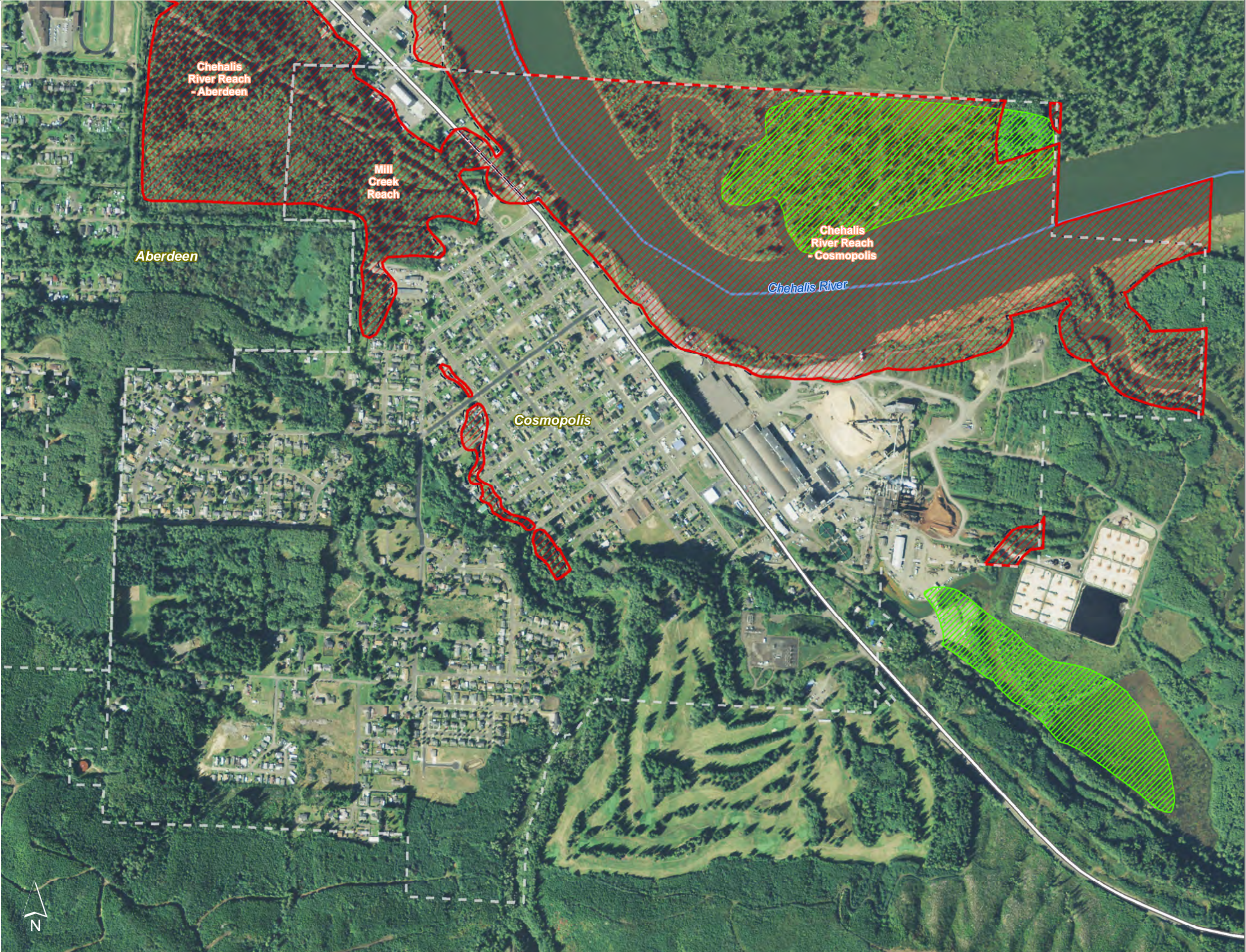
0 0.25 0.5 Miles

1:10,000



Source: Grays Harbor County, USFWS NWI (2011), FEMA Preliminary DFIRM (2013), WA DNR, WSDOT, DOE, NRCS NAIP (2013)

Shoreline jurisdiction boundaries depicted on this map are approximate. They have not been formally delineated or surveyed and are intended for planning purposes only. Additional site-specific evaluation may be needed to confirm/verify information shown on this map.

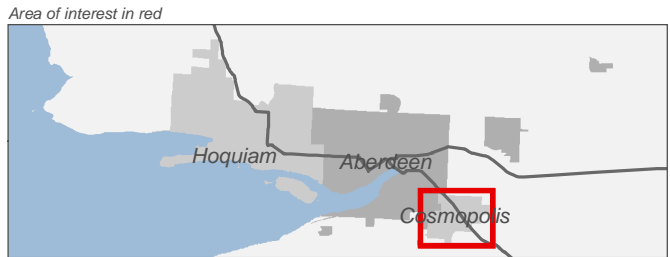
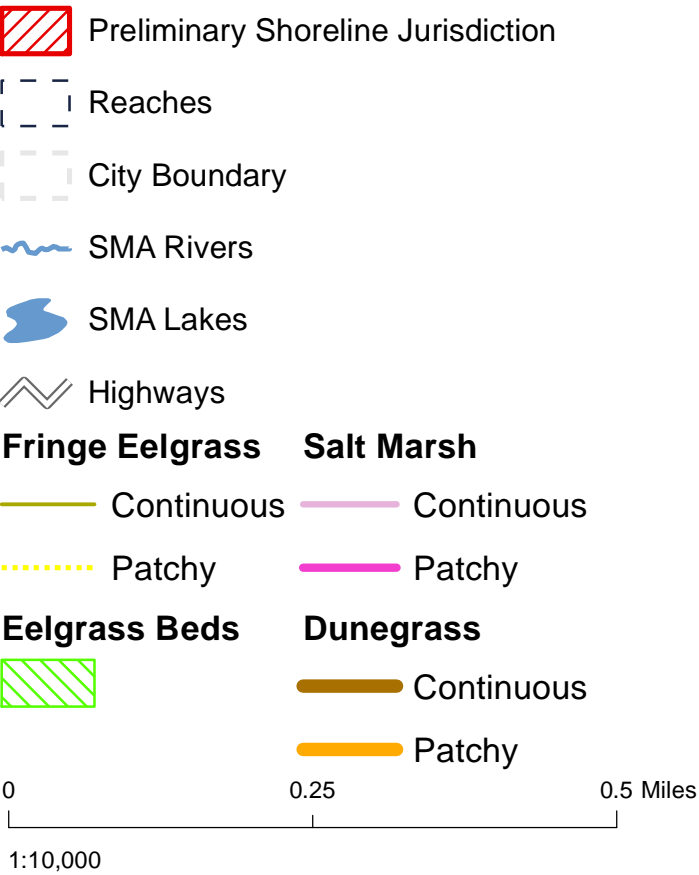




# Nearshore Vegetation

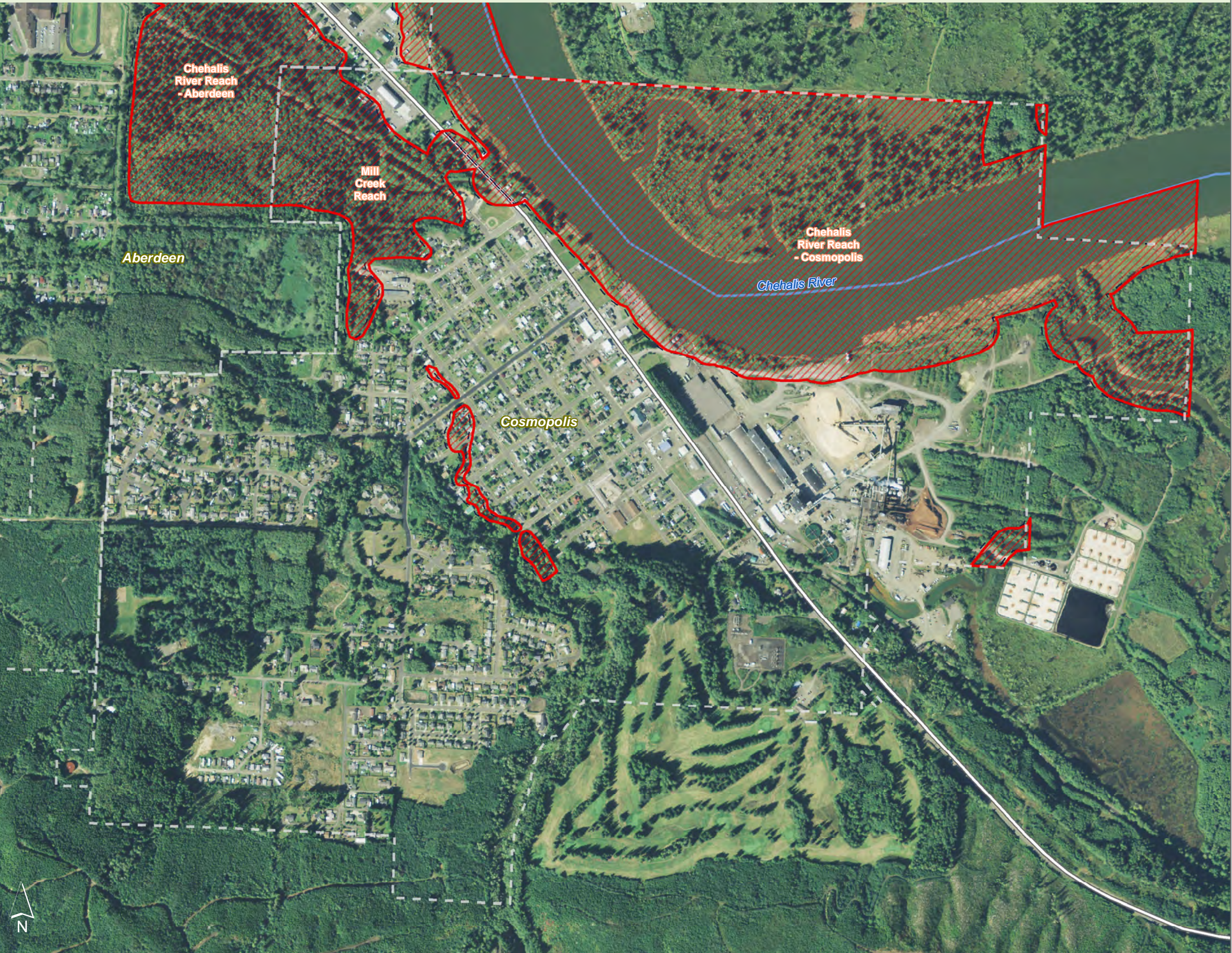
Figure 11.4: Cosmopolis

Date: 7/21/2014



Source: Grays Harbor County, USFWS NWI (2011), FEMA Preliminary DFIRM (2013), WA DNR, WSDOT, DOE, NRCS NAIP (2013)

Shoreline jurisdiction boundaries depicted on this map are approximate. They have not been formally delineated or surveyed and are intended for planning purposes only. Additional site-specific evaluation may be needed to confirm/verify information shown on this map.

















# Public Land

Figure 12.4: Cosmopolis

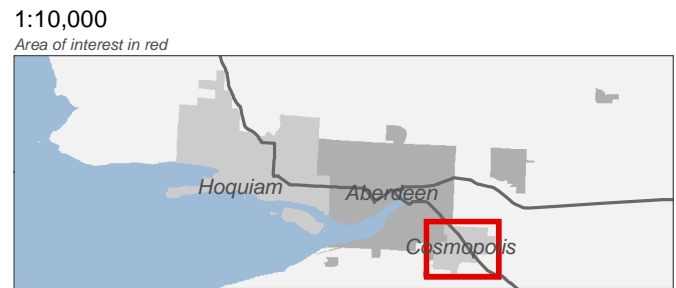
Date: 7/21/2014

-  Preliminary Shoreline Jurisdiction
-  Reaches
-  City Boundary
-  SMA Rivers
-  SMA Lakes
-  Highway

**Public Land**

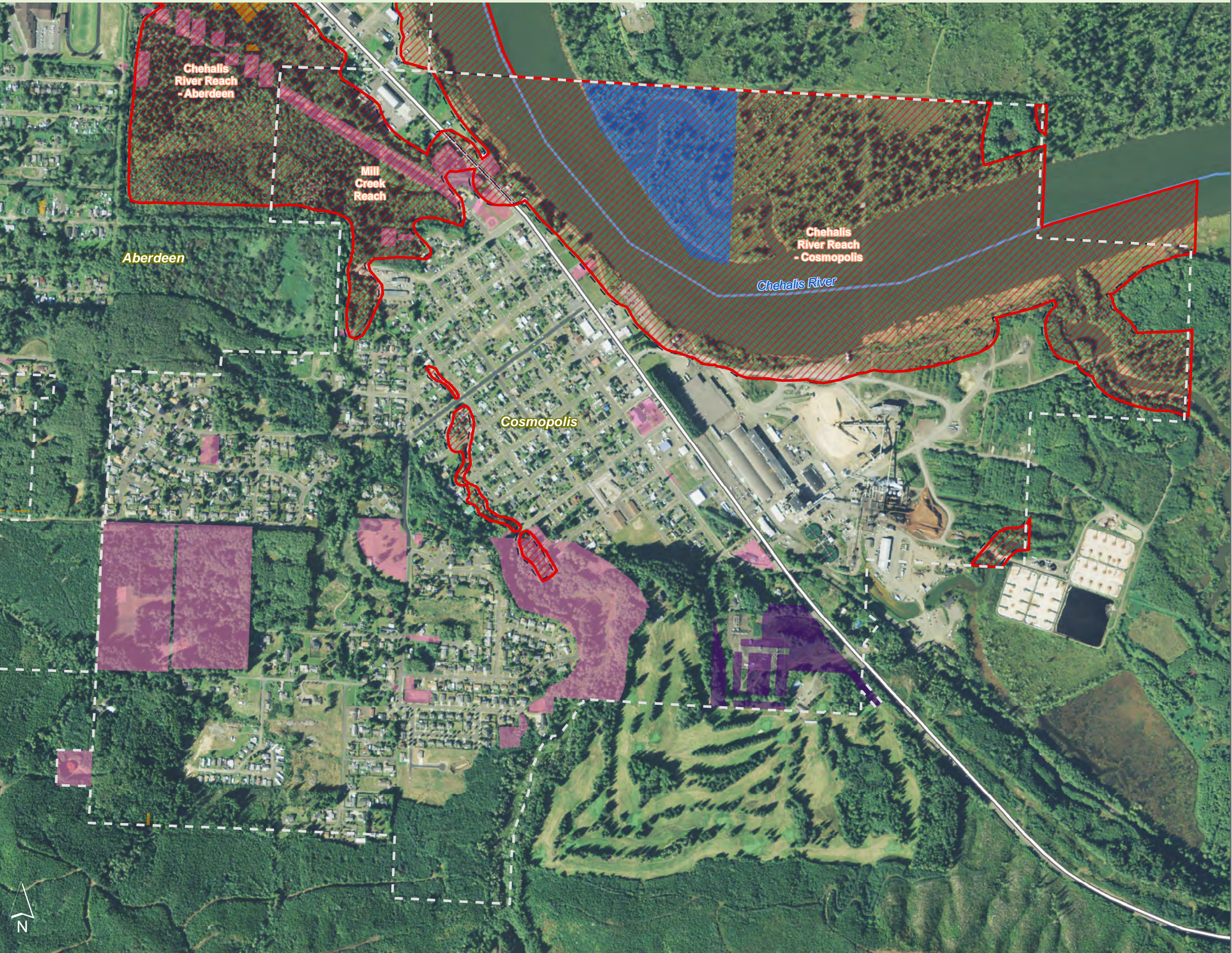
-  Federal Government
-  Grays Harbor County
-  Municipal
-  Port of Grays Harbor
-  Washington DNR
-  State of Washington

0 0.25 0.5 Miles



Source: Grays Harbor County, USFWS NWI (2011), FEMA Preliminary DFIRM (2013), DNR, WSDOT, Ecology, NRCS NAIP

Shoreline jurisdiction boundaries depicted on this map are approximate. They have not been formally delineated or surveyed and are intended for planning purposes only. Additional site-specific evaluation may be needed to confirm/verify information shown on this map.















# Contaminated Sites

Figure 13.4: Cosmopolis

Date: 7/21/2014

-  Preliminary Shoreline Jurisdiction
-  Reaches
-  City Boundary
-  SMA Rivers
-  SMA Lakes
-  Highways

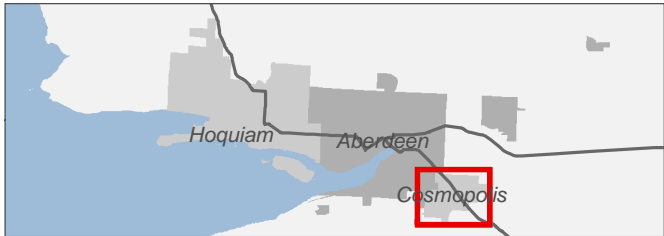
**TankStatus**

-  Operational
-  Awaiting Cleanup
-  Cleanup Started
-  Construction Complete-Performance Monitoring

0 0.25 0.5 Miles

1:10,000

Area of interest in red



Source: Grays Harbor County, USFWS NWI (2011), FEMA Preliminary DFIRM (2013), DNR, WSDOT, Ecology, NRCS NAIP

Shoreline jurisdiction boundaries depicted on this map are approximate. They have not been formally delineated or surveyed and are intended for planning purposes only. Additional site-specific evaluation may be needed to confirm/verify information shown on this map.





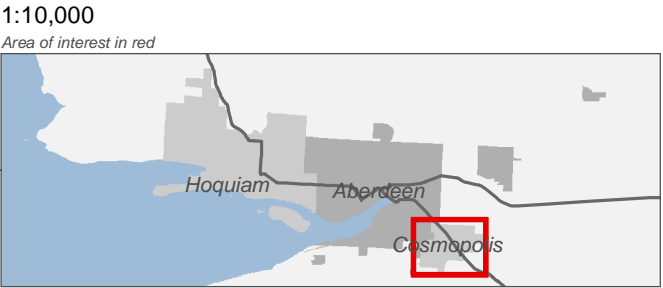
# Zoning

Figure 14.4: Cosmopolis

Date: 7/21/2014

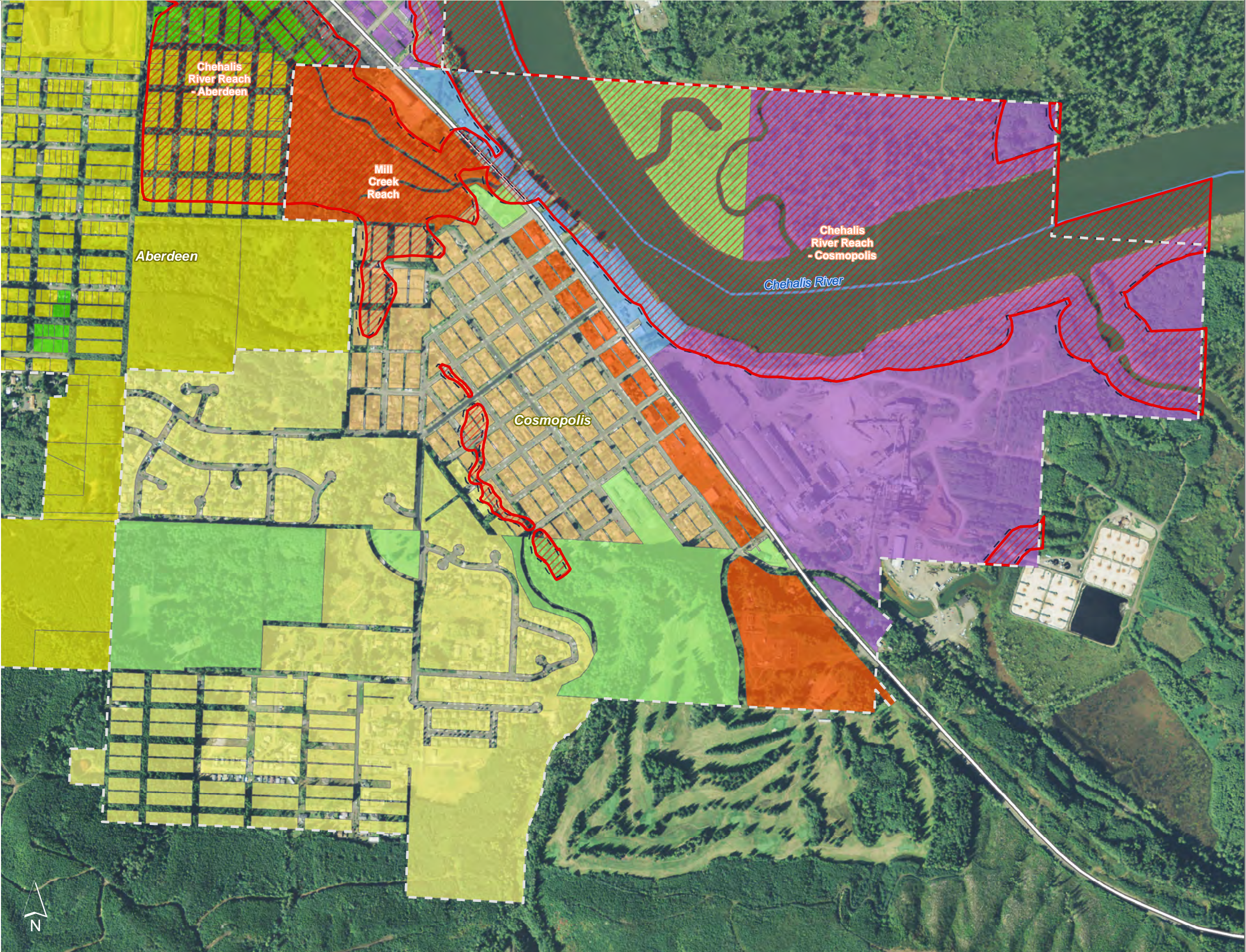
- Preliminary Shoreline Jurisdiction
- Reaches
- City Boundary
- SMA Rivers
- SMA Lakes
- Highway
- WA - Waterfront Use
- City of Aberdeen  
Zoning Districts
- CR - Commercial/Resid...
- I - Industrial
- RM - Multiple Family Residential
- RS - Single Family Residential
- City of Cosmopolis  
Zoning Districts
- M - Manufacturing
- MU - Mixed Use
- PR - Public Reserve
- R100 - Residential (Low Density)
- R57 - Residential (Medium Density)

0.25 0.5 Miles



Source: Grays Harbor County, USFWS NWI (2011), FEMA Preliminary DFIRM (2013), DNR, WSDOT, Ecology, NRCS NAIP

Shoreline jurisdiction boundaries depicted on this map are approximate. They have not been formally delineated or surveyed and are intended for planning purposes only. Additional site-specific evaluation may be needed to confirm/verify information shown on this map.






# Geological Hazards

Figure 15.4: Cosmopolis

Date: 7/21/2014

 Preliminary Shoreline Jurisdiction

 Reaches


 City Boundary


 SMA Rivers

 SMA Lakes


 Highways

**Landslides**


 Debris flow

 Debris slide and  
avalanches

 Deep-seated

 Shallow  
undifferentiated

**Seismic Event  
Scenario**

 Cascadia  
Scenario 1A

**Liquefaction  
Susceptibility**

 Moderate to High

0 0.25 0.5 Miles

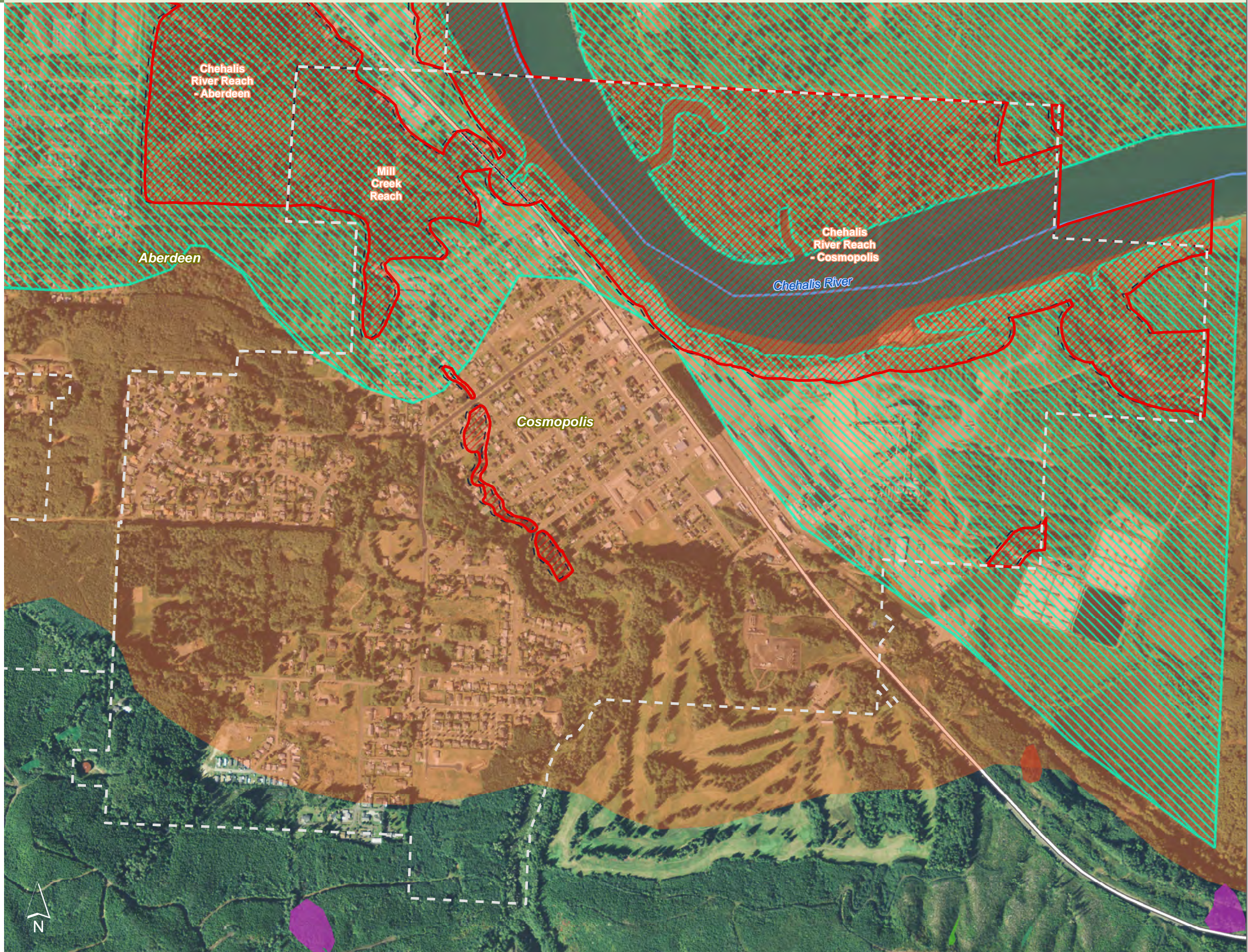
1:10,000

Area of interest in red



Source: Grays Harbor County, USFWS NWI (2011), FEMA Preliminary DFIRM (2013), WA DNR, WSDOT, DOE, NRCS NAIP (2013)

Shoreline jurisdiction boundaries depicted on this map are approximate. They have not been formally delineated or surveyed and are intended for planning purposes only. Additional site-specific evaluation may be needed to confirm/verify information shown on this map.

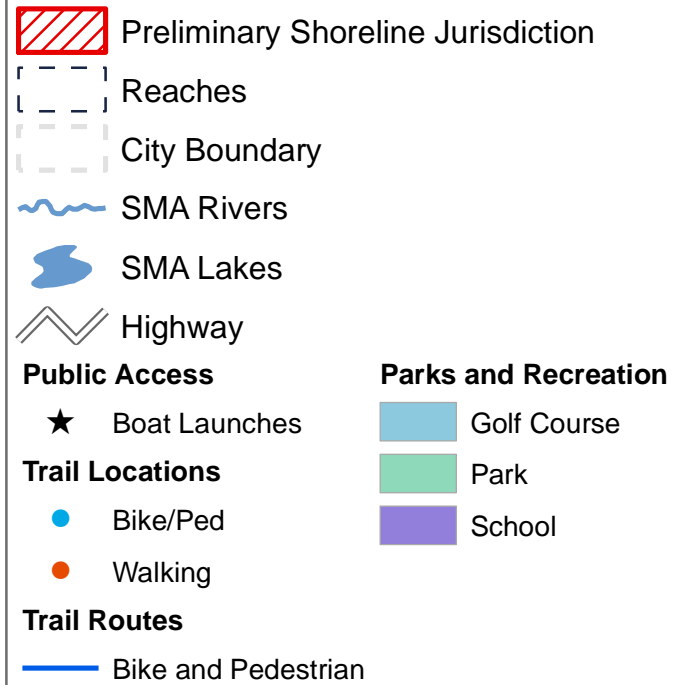




# Public Access

Figure 16.4: Cosmopolis

Date: 7/21/2014



0 0.25 0.5 Miles

1:10,000

Area of interest in red



Source: Grays Harbor County, USFWS NWI (2011), FEMA Preliminary DFIRM (2013), DNR, WSDOT, Ecology, NRCS NAIP

Shoreline jurisdiction boundaries depicted on this map are approximate. They have not been formally delineated or surveyed and are intended for planning purposes only. Additional site-specific evaluation may be needed to confirm/verify information shown on this map.

