


Surface Water System

Figure 7.1: Hoquiam

Date: 10/2/2014

 Preliminary Shoreline Jurisdiction

 Reaches

 City Boundary

 SMA Lakes

 SMA Rivers


 Highways

Road Crossing - Blockage Type

 N/A

 None


 Partial


 Total

 Unknown

Tide Gates

 City of Aberdeen

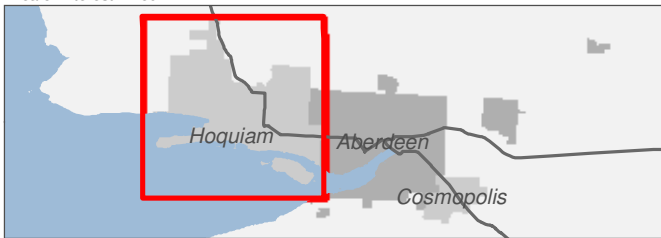
 City of Hoquiam

 Tide Gate per WDFW

0 0.25 0.5 Miles

1:33,000

Area of interest in red



Source: Grays Harbor County, USFWS NWI, FEMA, WA DNR, WSDOT, DOE, NRCS NAIP

Shoreline jurisdiction boundaries depicted on this map are approximate. They have not been formally delineated or surveyed and are intended for planning purposes only. Additional site-specific evaluation may be needed to confirm/verify information shown on this map.



Surface Water System

Figure 7.11: Hoquiam

Date: 10/2/2014

- Preliminary Shoreline Jurisdiction
- Reaches
- City Boundary
- SMA Lakes
- SMA Rivers
- Highways

Road Crossing - Blockage Type

- N/A
- None
- Partial
- Total
- Unknown

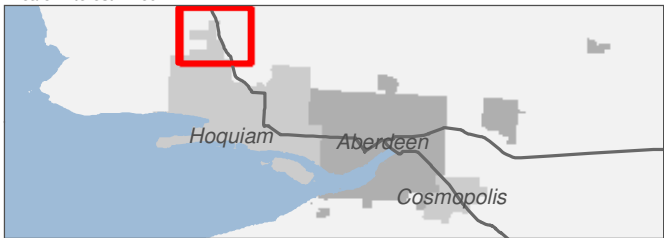
Tide Gates

- City of Aberdeen
- City of Hoquiam
- Tide Gate per WDFW

0 0.25 0.5 Miles

1:10,000

Area of interest in red



Source: Grays Harbor County, USFWS NWI, FEMA, WA DNR, WSDOT, DOE, NRCS NAIP

Shoreline jurisdiction boundaries depicted on this map are approximate. They have not been formally delineated or surveyed and are intended for planning purposes only. Additional site-specific evaluation may be needed to confirm/verify information shown on this map.



Surface Water System

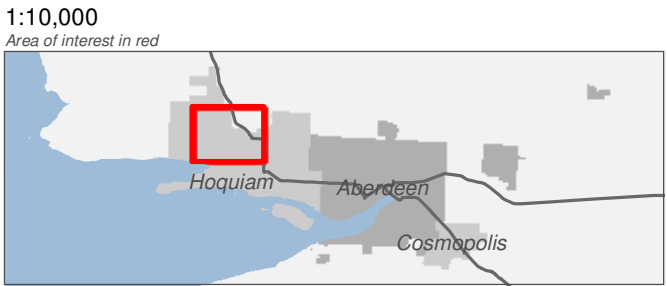
Figure 7.12: Hoquiam

Date: 10/2/2014

- Preliminary Shoreline Jurisdiction
- Reaches
- City Boundary
- SMA Lakes
- SMA Rivers
- Highways

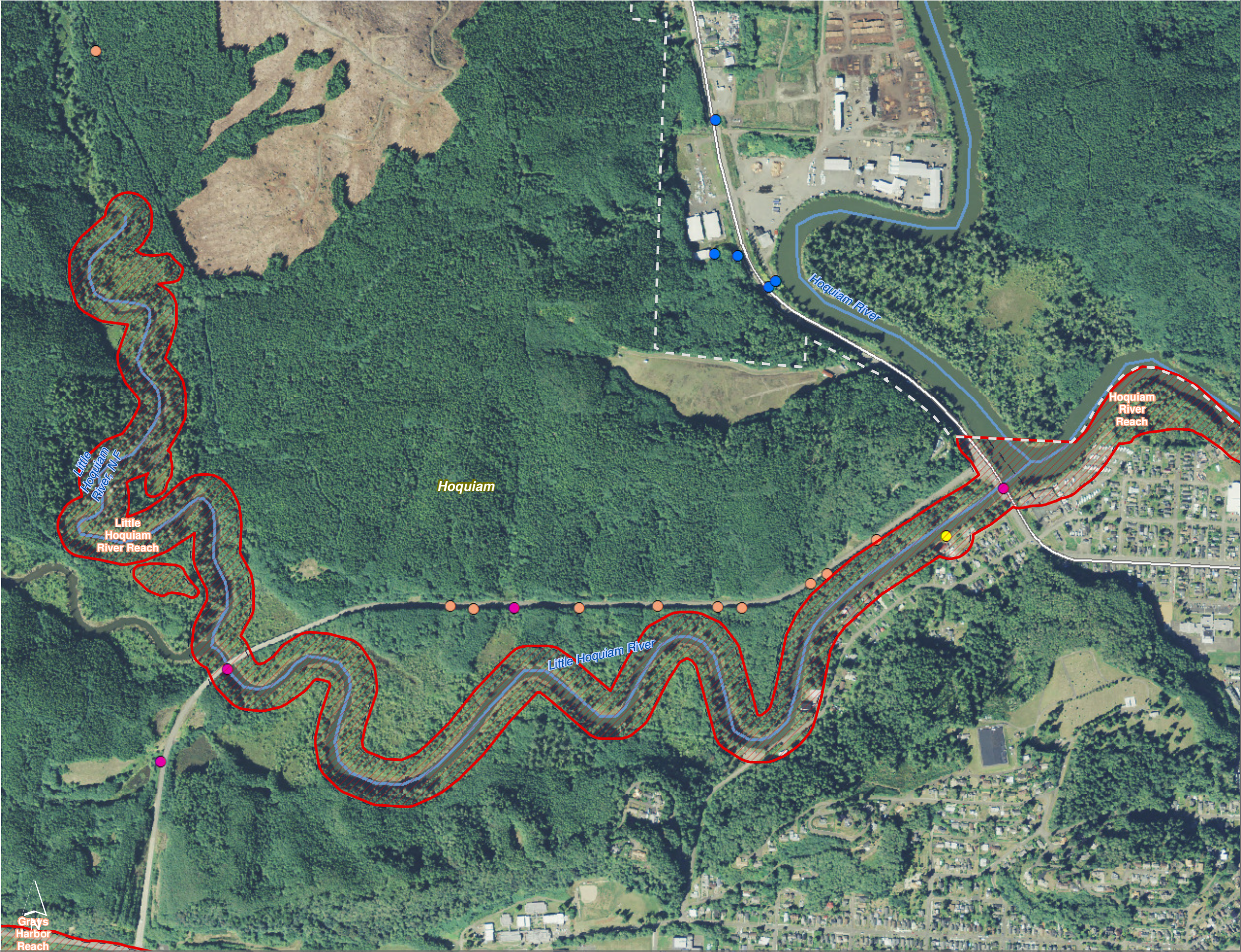
- Road Crossing - Blockage Type**
- N/A
 - None
 - Partial
 - Total
 - Unknown
- Tide Gates**
- City of Aberdeen
 - City of Hoquiam
 - Tide Gate per WDFW

0 0.25 0.5 Miles



Source: Grays Harbor County, USFWS NWI, FEMA, WA DNR, WSDOT, DOE, NRCS NAIP







Shoreline jurisdiction boundaries depicted on this map are approximate. They have not been formally delineated or surveyed and are intended for planning purposes only. Additional site-specific evaluation may be needed to confirm/verify information shown on this map.



Surface Water System

Figure 7.13: Hoquiam




Date: 10/2/2014

-  Preliminary Shoreline Jurisdiction
-  Reaches
-  City Boundary
-  SMA Lakes
-  SMA Rivers
-  Highways

Road Crossing - Blockage Type

-  N/A
-  None
-  Partial
-  Total
-  Unknown

Tide Gates

-  City of Aberdeen
-  City of Hoquiam
-  Tide Gate per WDFW

0 0.25 0.5 Miles

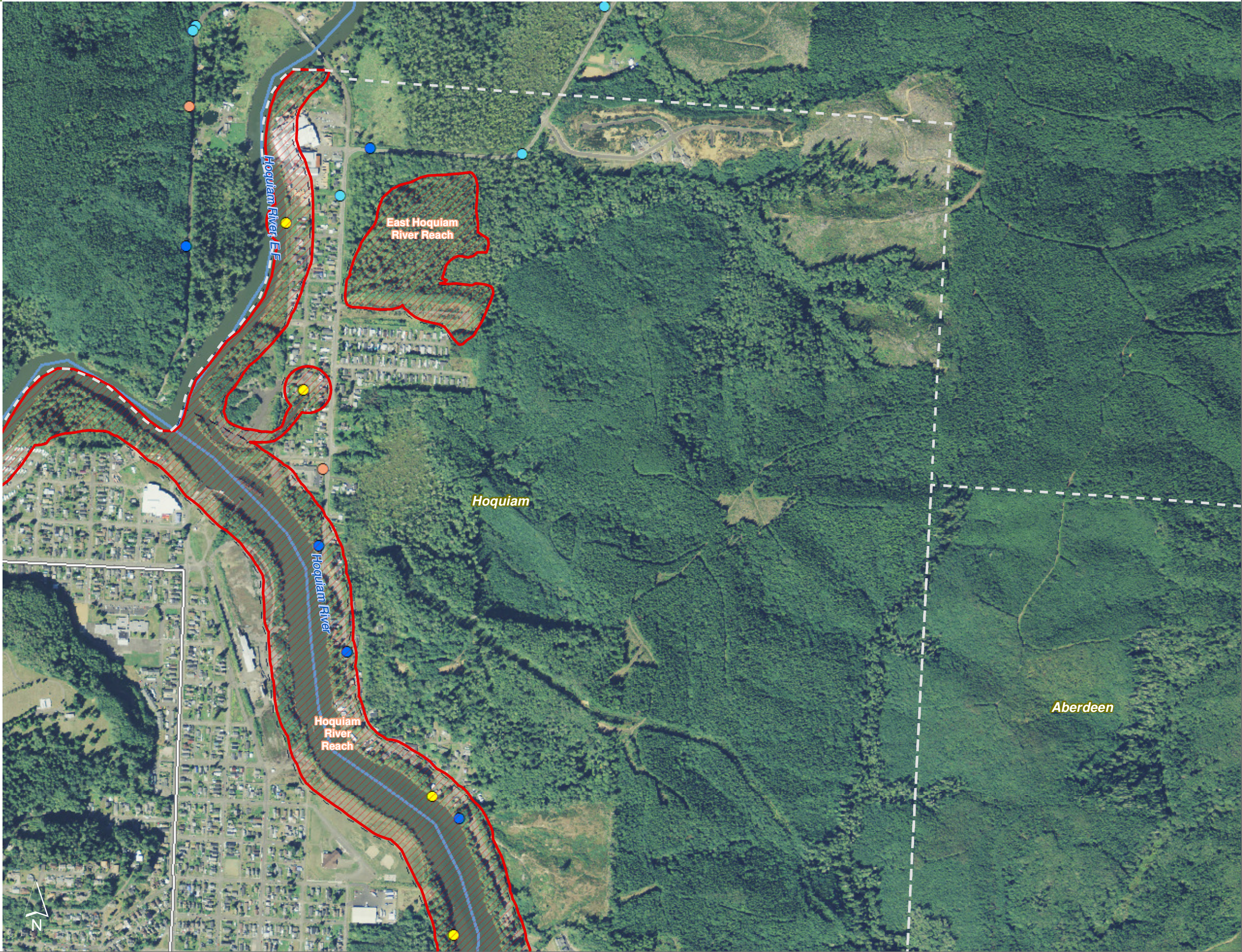
1:10,000

Area of interest in red



Source: Grays Harbor County, USFWS NWI, FEMA, WA DNR, WSDOT, DOE, NRCS NAIP

Shoreline jurisdiction boundaries depicted on this map are approximate. They have not been formally delineated or surveyed and are intended for planning purposes only. Additional site-specific evaluation may be needed to confirm/verify information shown on this map.



Surface Water System

Figure 7.14: Hoquiam

Date: 10/2/2014

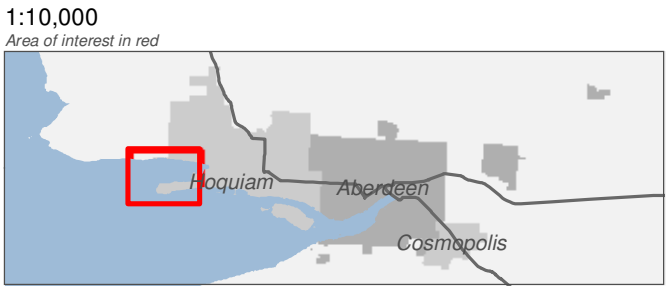
- Preliminary Shoreline Jurisdiction
- Reaches
- City Boundary
- SMA Lakes
- SMA Rivers
- Highways

- Road Crossing - Blockage Type**

 - N/A
 - None
 - Partial
 - Total
 - Unknown
- Tide Gates**

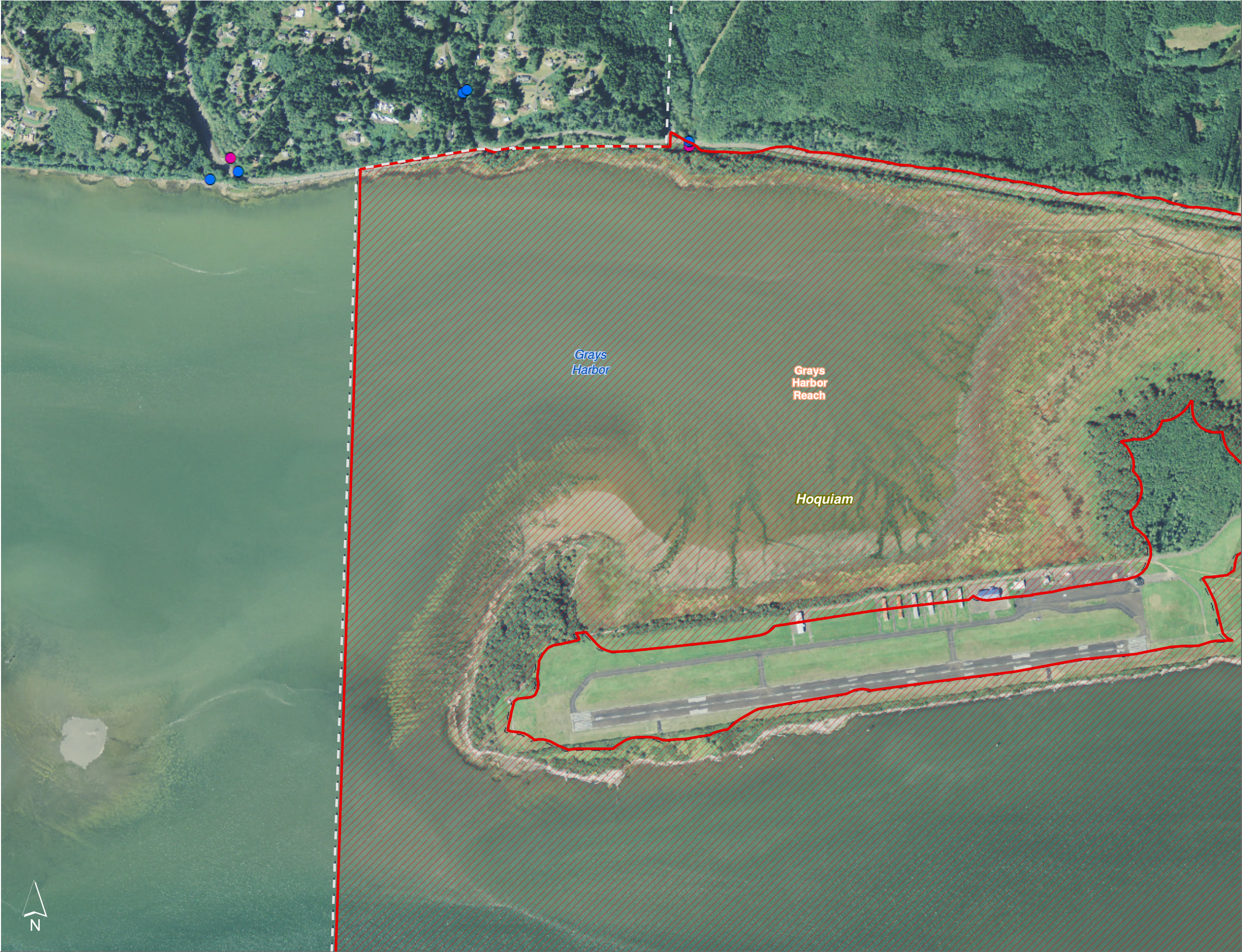
 - City of Aberdeen
 - City of Hoquiam
 - Tide Gate per WDFW

0 0.25 0.5 Miles



Source: Grays Harbor County, USFWS NWI, FEMA, WA DNR, WSDOT, DOE, NRCS NAIP

Shoreline jurisdiction boundaries depicted on this map are approximate. They have not been formally delineated or surveyed and are intended for planning purposes only. Additional site-specific evaluation may be needed to confirm/verify information shown on this map.



Surface Water System

Figure 7.15: Hoquiam

Date: 10/2/2014

- Preliminary Shoreline Jurisdiction
- Reaches
- City Boundary
- SMA Lakes
- SMA Rivers
- Highways

Road Crossing - Blockage Type

- N/A
- None
- Partial
- Total
- Unknown

Tide Gates

- City of Aberdeen
- City of Hoquiam
- Tide Gate per WDFW

0 0.25 0.5 Miles

1:10,000

Area of interest in red



Source: Grays Harbor County, USFWS NWI, FEMA, WA DNR, WSDOT, DOE, NRCS NAIP

Shoreline jurisdiction boundaries depicted on this map are approximate. They have not been formally delineated or surveyed and are intended for planning purposes only. Additional site-specific evaluation may be needed to confirm/verify information shown on this map.



Surface Water System

Figure 7.16: Hoquiam

Date: 10/2/2014

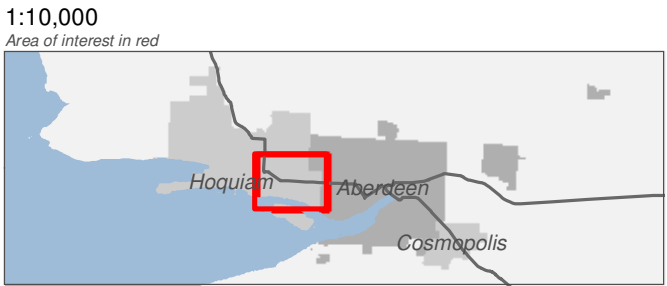
- Preliminary Shoreline Jurisdiction
- Reaches
- City Boundary
- SMA Lakes
- SMA Rivers
- Highways

- Road Crossing - Blockage Type**

 - N/A
 - None
 - Partial
 - Total
 - Unknown
- Tide Gates**

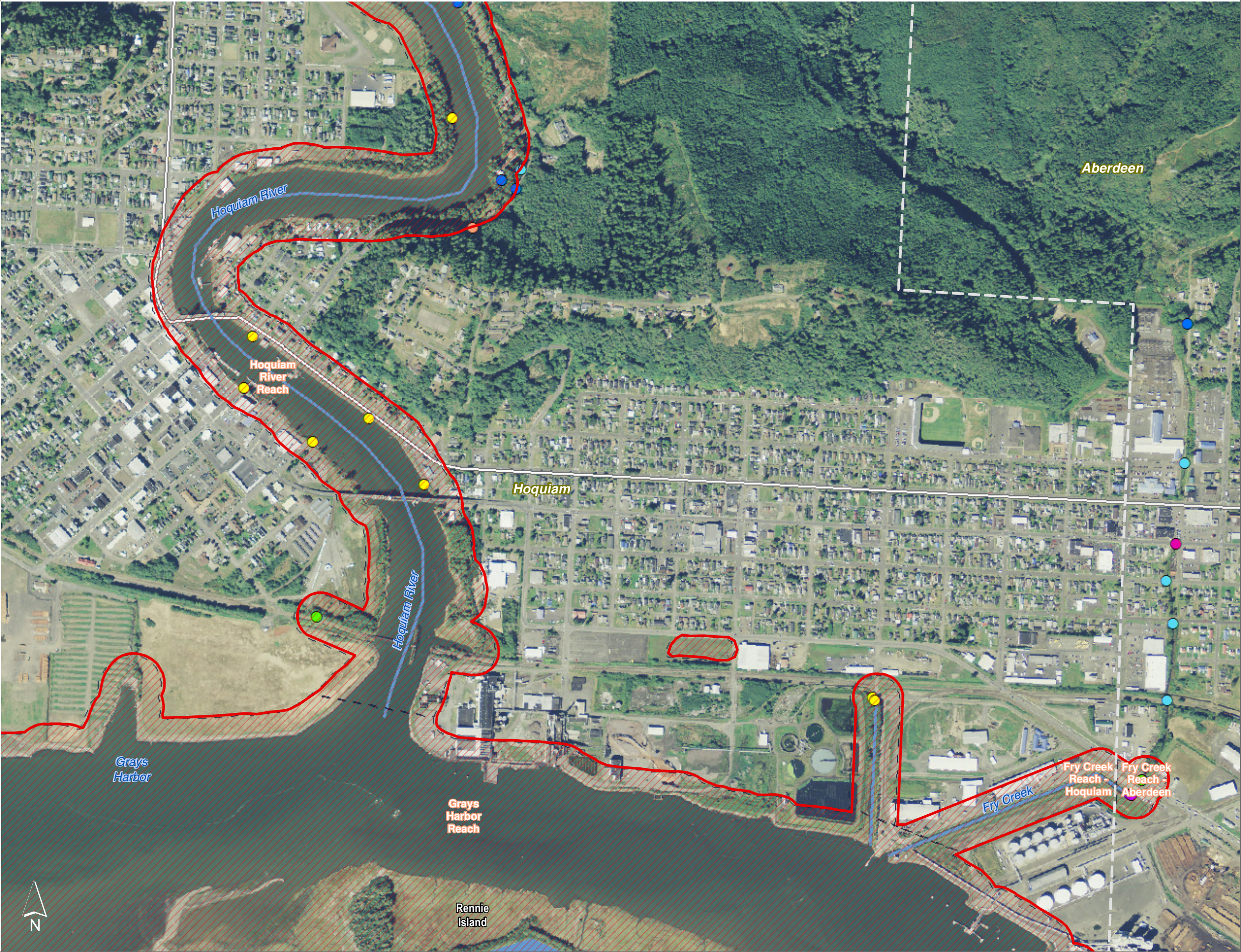
 - City of Aberdeen
 - City of Hoquiam
 - Tide Gate per WDFW

0 0.25 0.5 Miles



Source: Grays Harbor County, USFWS NWI, FEMA, WA DNR, WSDOT, DOE, NRCS NAIP







Shoreline jurisdiction boundaries depicted on this map are approximate. They have not been formally delineated or surveyed and are intended for planning purposes only. Additional site-specific evaluation may be needed to confirm/verify information shown on this map.





Surface Water System


Figure 7.17: Hoquiam


Date: 10/2/2014


-  Preliminary Shoreline Jurisdiction
-  Reaches
-  City Boundary
-  SMA Lakes
-  SMA Rivers
-  Highways
- Road Crossing - Blockage Type**


 N/A


 None


 Partial

 Total

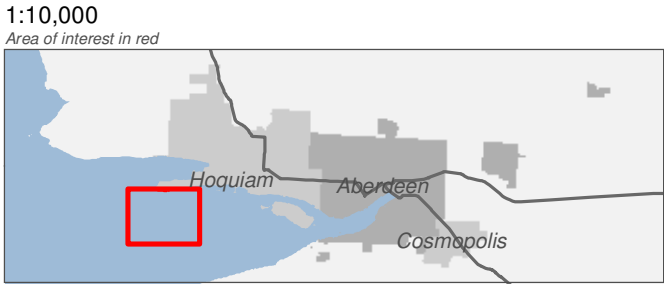
 Unknown
- Tide Gates**

 City of Aberdeen

 City of Hoquiam

 Tide Gate per WDFW

0 0.25 0.5 Miles



Source: Grays Harbor County, USFWS NWI, FEMA, WA DNR, WSDOT, DOE, NRCS NAIP


Shoreline jurisdiction boundaries depicted on this map are approximate. They have not been formally delineated or surveyed and are intended for planning purposes only. Additional site-specific evaluation may be needed to confirm/verify information shown on this map.




Surface Water System

Figure 7.18: Hoquiam


Date: 10/2/2014




Preliminary Shoreline Jurisdiction




Reaches




City Boundary



SMA Lakes




SMA Rivers




Highways


Road Crossing -
Blockage Type




N/A




None



Partial




Total




Unknown


Tide Gates



City of Aberdeen




City of Hoquiam



Tide Gate per
WDFW




0 0.25 0.5 Miles



1:10,000
Area of interest in red




Source: Grays Harbor County, USFWS NWI, FEMA, WA DNR, WSDOT, DOE, NRCS NAIP

Shoreline jurisdiction boundaries depicted on this map are approximate. They have not been formally delineated or surveyed and are intended for planning purposes only. Additional site-specific evaluation may be needed to confirm/verify information shown on this map.







The main map is an aerial photograph overlaid with planning information. A red dashed line runs horizontally across the lower third of the image, indicating the preliminary shoreline jurisdiction boundary. Above this line, the area is labeled 'Hoquiam' in yellow. Below the line, the area is labeled 'Grays Harbor' in blue. To the right of the 'Hoquiam' label, 'Grays Harbor Reach' is labeled in red. A north arrow is located in the bottom left corner of the map area.

Surface Water System

Figure 7.19: Hoquiam

Date: 10/2/2014

- Preliminary Shoreline Jurisdiction
- Reaches
- City Boundary
- SMA Lakes
- SMA Rivers
- Highways

- Road Crossing - Blockage Type**

 - N/A
 - None
 - Partial
 - Total
 - Unknown
- Tide Gates**

 - City of Aberdeen
 - City of Hoquiam
 - Tide Gate per WDFW

0 0.25 0.5 Miles



Source: Grays Harbor County, USFWS NWI, FEMA, WA DNR, WSDOT, DOE, NRCS NAIP

Shoreline jurisdiction boundaries depicted on this map are approximate. They have not been formally delineated or surveyed and are intended for planning purposes only. Additional site-specific evaluation may be needed to confirm/verify information shown on this map.

