

Figure 14.1: Hoquiam

Date: 10/2/2014

- Preliminary Shoreline Jurisdiction
- Reaches
- City Boundary
- SMA Rivers
- SMA Lakes
- Highways
- LI - Light Industrial
- MI - Major Institutional
- RM - Multiple Family Residential
- RS - Single Family Residential
- C1 - General Commercial District
- C2 - Downtown Commercial
- I - Industrial District
- NR - Natural Resource District
- R1 - Low Density Residential
- R2 - High Density Residential
- Pedestrian Overlay District
- Waterfront Overlay District
- CD - Downtown Commercial
- CG - General Commercial
- CR - Commercial/Residential
- I - Industrial

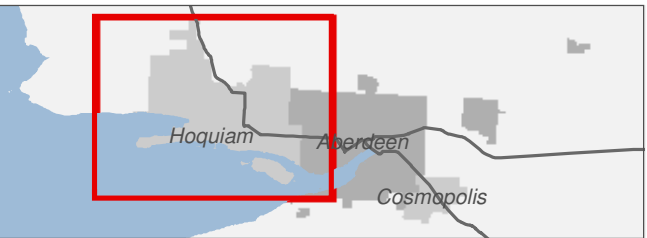
0

0.25

0.5 Miles

1:33,000

Area of interest in red



Source: Grays Harbor County, USFWS NWI (2011), FEMA Preliminary DFIRM (2013), DNR, WSDOT, Ecology, NRCS NAIP

Shoreline jurisdiction boundaries depicted on this map are approximate. They have not been formally delineated or surveyed and are intended for planning purposes only. Additional site-specific evaluation may be needed to confirm/verify information shown on this map.

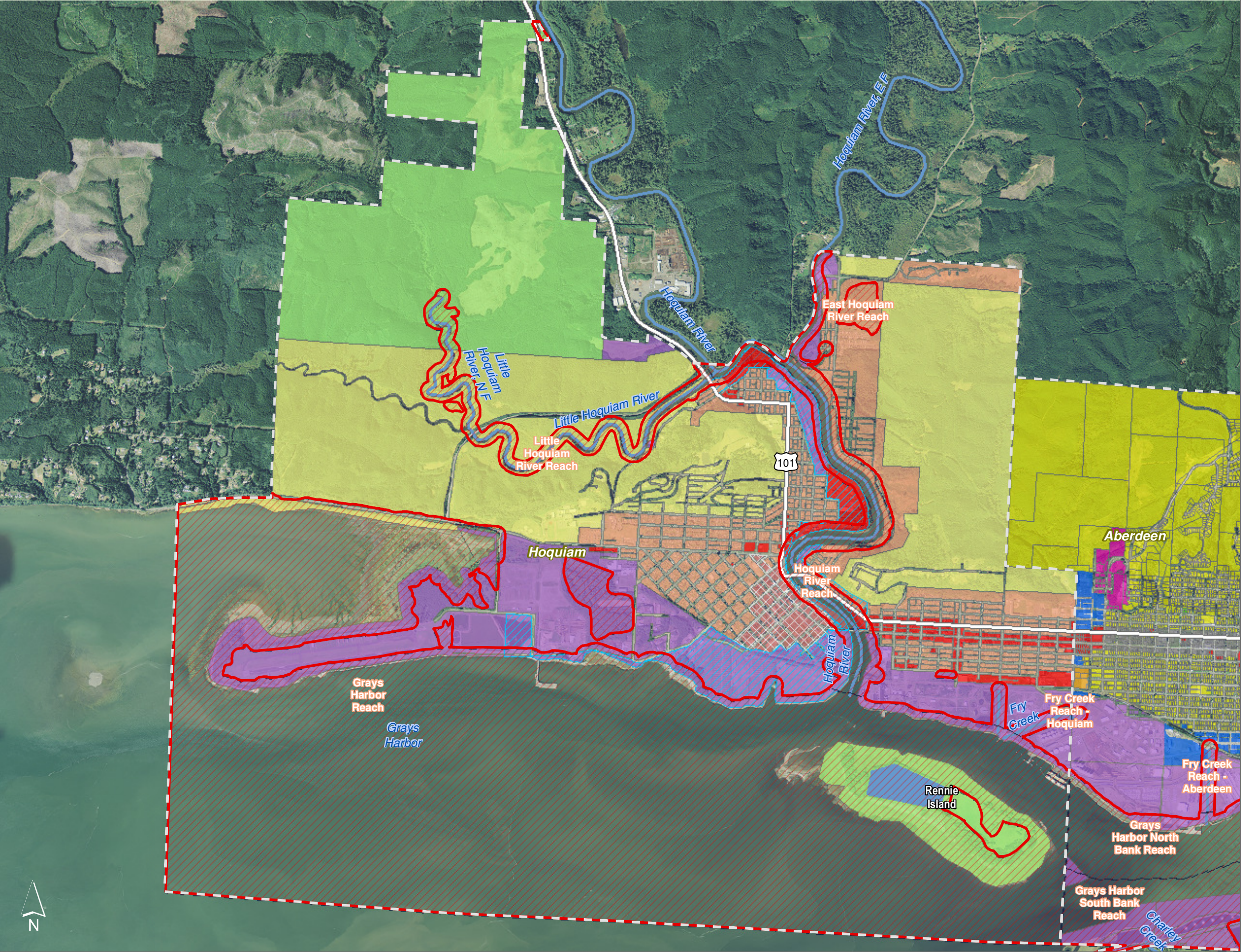











Figure 14.11: Hoquiam

Date: 10/2/2014

-  Preliminary Shoreline Jurisdiction
-  Reaches
-  City Boundary
-  SMA Rivers
-  SMA Lakes
-  Highways

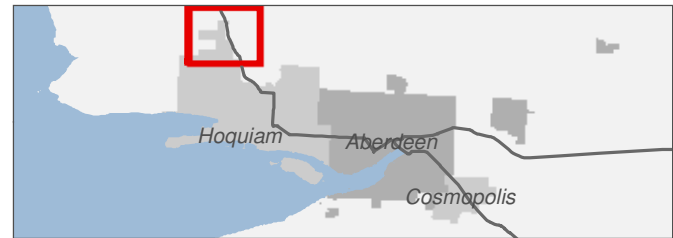
City of Hoquiam Zoning Districts

-  NR - Natural Resource District

0 0.25 0.5 Miles

1:10,000

Area of interest in red



Source: Grays Harbor County, USFWS NWI (2011), FEMA Preliminary DFIRM (2013), DNR, WSDOT, Ecology, NRCS NAIP

Shoreline jurisdiction boundaries depicted on this map are approximate. They have not been formally delineated or surveyed and are intended for planning purposes only. Additional site-specific evaluation may be needed to confirm/verify information shown on this map.





Figure 14.12: Hoquiam

Date: 10/2/2014

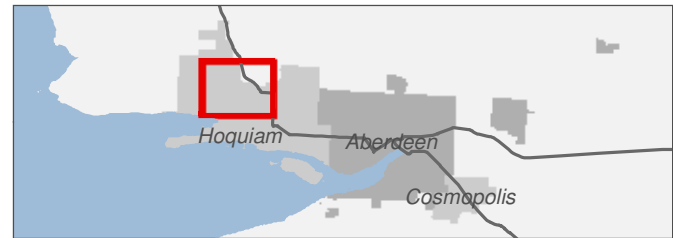
- Preliminary Shoreline Jurisdiction
- Reaches
- City Boundary
- SMA Rivers
- SMA Lakes
- Highways

- City of Hoquiam Zoning Districts**
- C1 - General Commercial District
  - I - Industrial District
  - NR - Natural Resource District
  - R1 - Low Density Residential
  - R2 - High Density Residential
- City of Hoquiam Zoning Overlay District**
- Waterfront Overlay District

0 0.25 0.5 Miles

1:10,000

Area of interest in red



Source: Grays Harbor County, USFWS NWI (2011), FEMA Preliminary DFIRM (2013), DNR, WSDOT, Ecology, NRCS NAIP

Shoreline jurisdiction boundaries depicted on this map are approximate. They have not been formally delineated or surveyed and are intended for planning purposes only. Additional site-specific evaluation may be needed to confirm/verify information shown on this map.

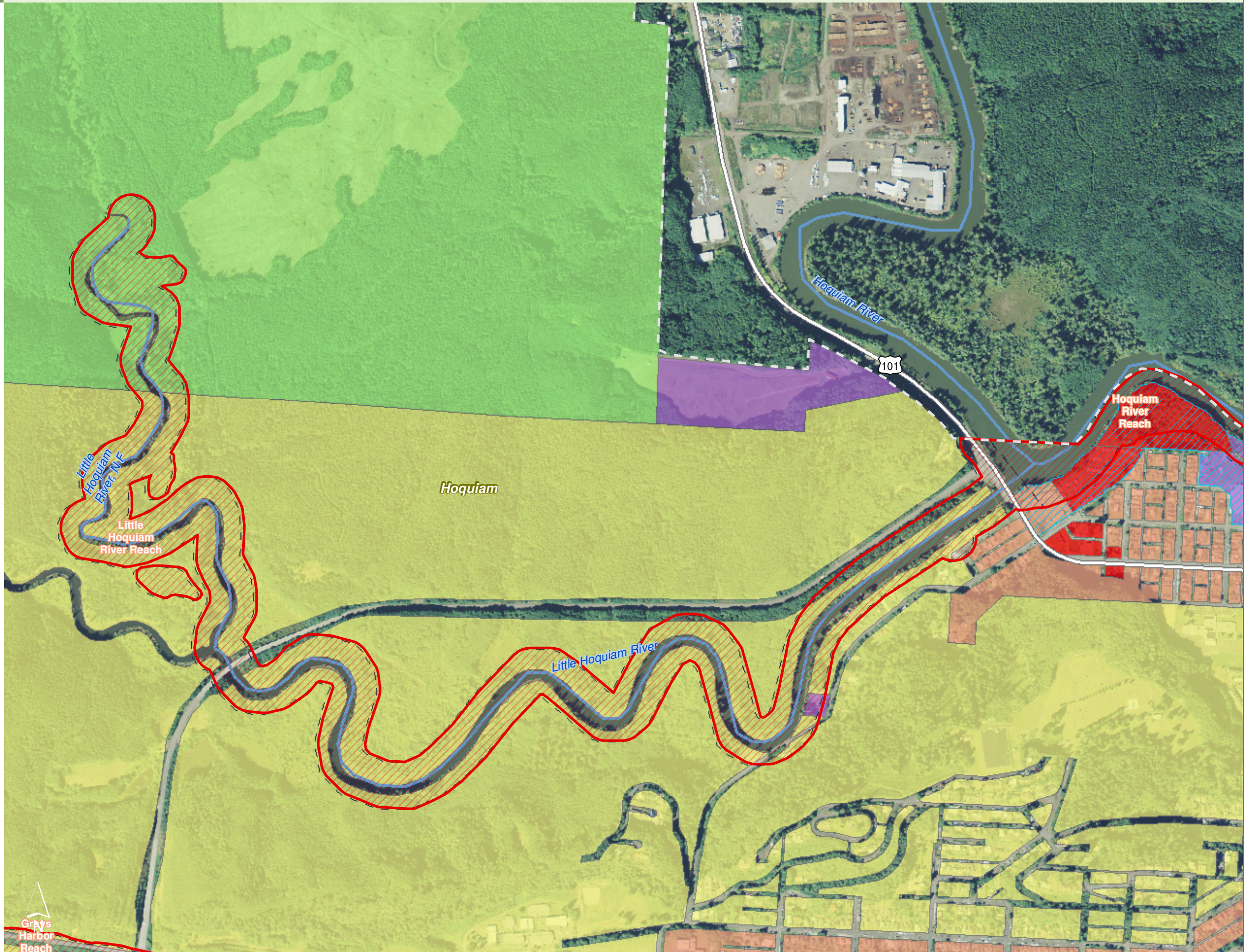
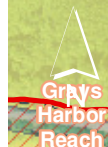




Figure 14.13: Hoquiam

Date: 10/2/2014

- Preliminary Shoreline Jurisdiction
- Reaches
- City Boundary
- SMA Rivers
- SMA Lakes
- Highways

City of Hoquiam Zoning Districts

- C1 - General Commercial District
- I - Industrial District
- R1 - Low Density Residential
- R2 - High Density Residential

City of Hoquiam Zoning Overlay District

- Waterfront Overlay District

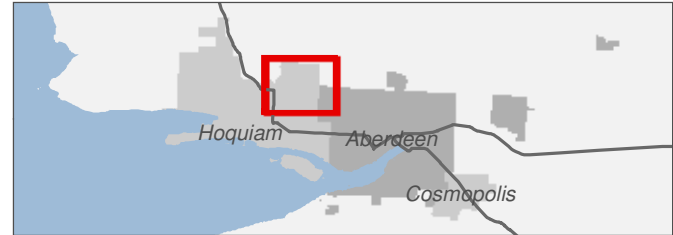
City of Aberdeen Zoning

- RS - Single Family Residential

0 0.25 0.5 Miles

1:10,000

Area of interest in red



Source: Grays Harbor County, USFWS NWI (2011), FEMA Preliminary DFIRM (2013), DNR, WSDOT, Ecology, NRCS NAIP

Shoreline jurisdiction boundaries depicted on this map are approximate. They have not been formally delineated or surveyed and are intended for planning purposes only. Additional site-specific evaluation may be needed to confirm/verify information shown on this map.

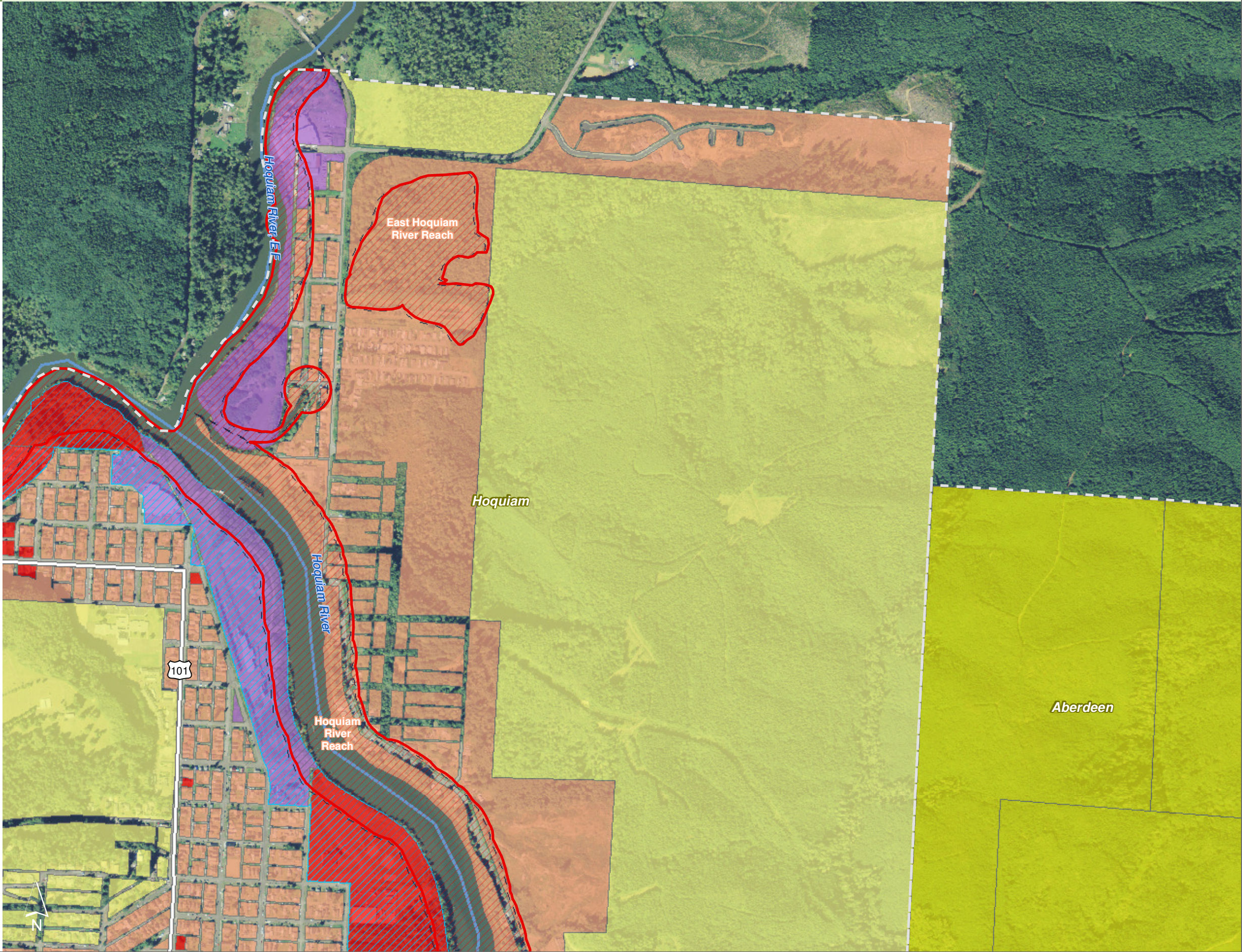





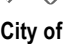


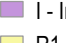



Figure 14.14: Hoquiam

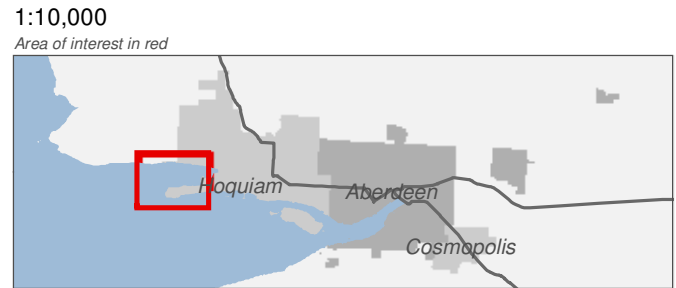
Date: 10/2/2014

-  Preliminary Shoreline Jurisdiction
-  Reaches
-  City Boundary
-  SMA Rivers
-  SMA Lakes
-  Highways

**City of Hoquiam Zoning Districts**

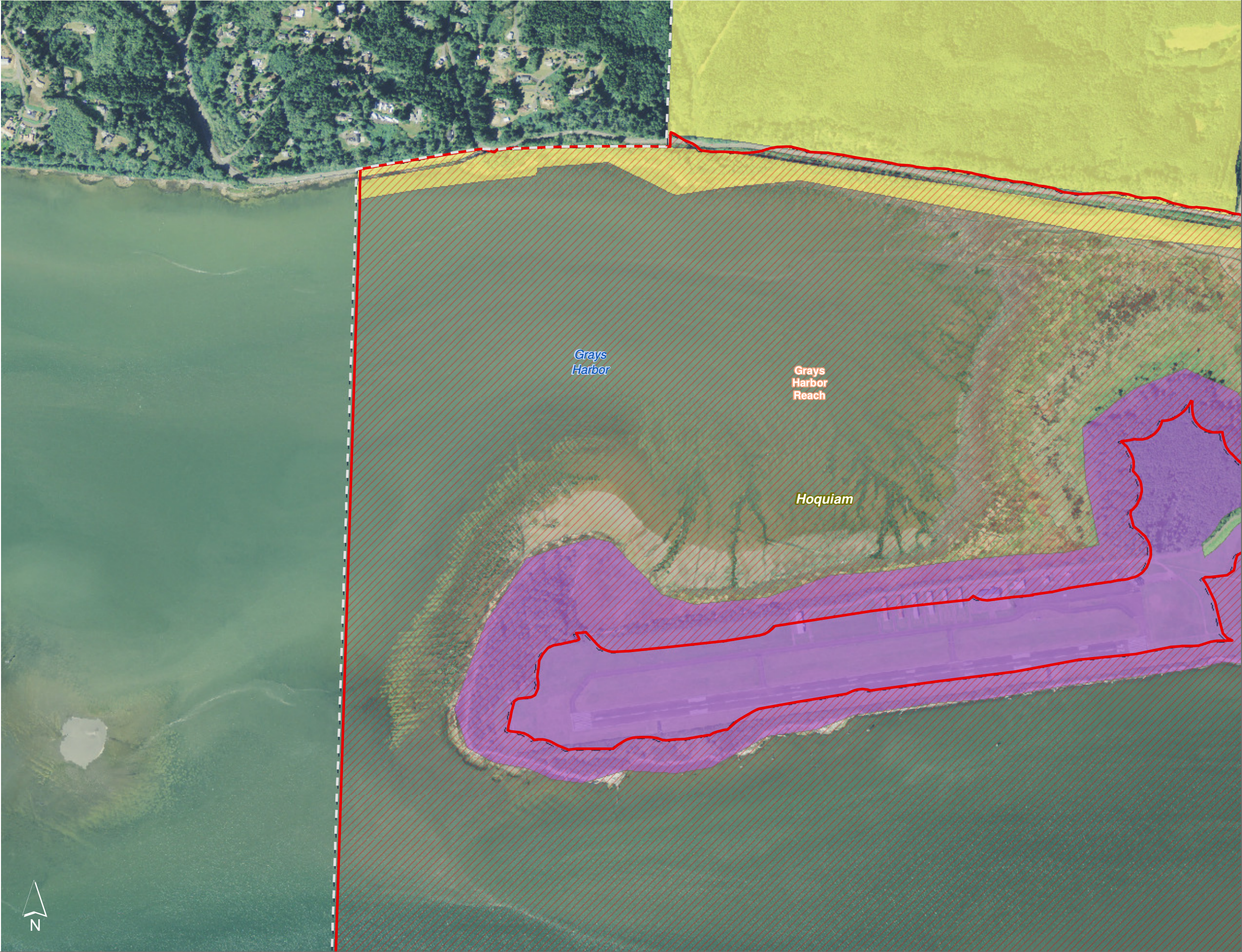
-  I - Industrial District
-  R1 - Low Density Residential

0 0.25 0.5 Miles



Source: Grays Harbor County, USFWS NWI (2011), FEMA Preliminary DFIRM (2013), DNR, WSDOT, Ecology, NRCS NAIP

Shoreline jurisdiction boundaries depicted on this map are approximate. They have not been formally delineated or surveyed and are intended for planning purposes only. Additional site-specific evaluation may be needed to confirm/verify information shown on this map.





# Zoning

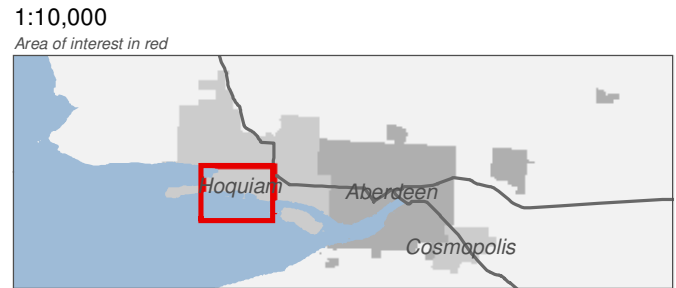
Figure 14.15: Hoquiam

Date: 10/2/2014

- Preliminary Shoreline Jurisdiction
- Reaches
- City Boundary
- SMA Rivers
- SMA Lakes
- Highways

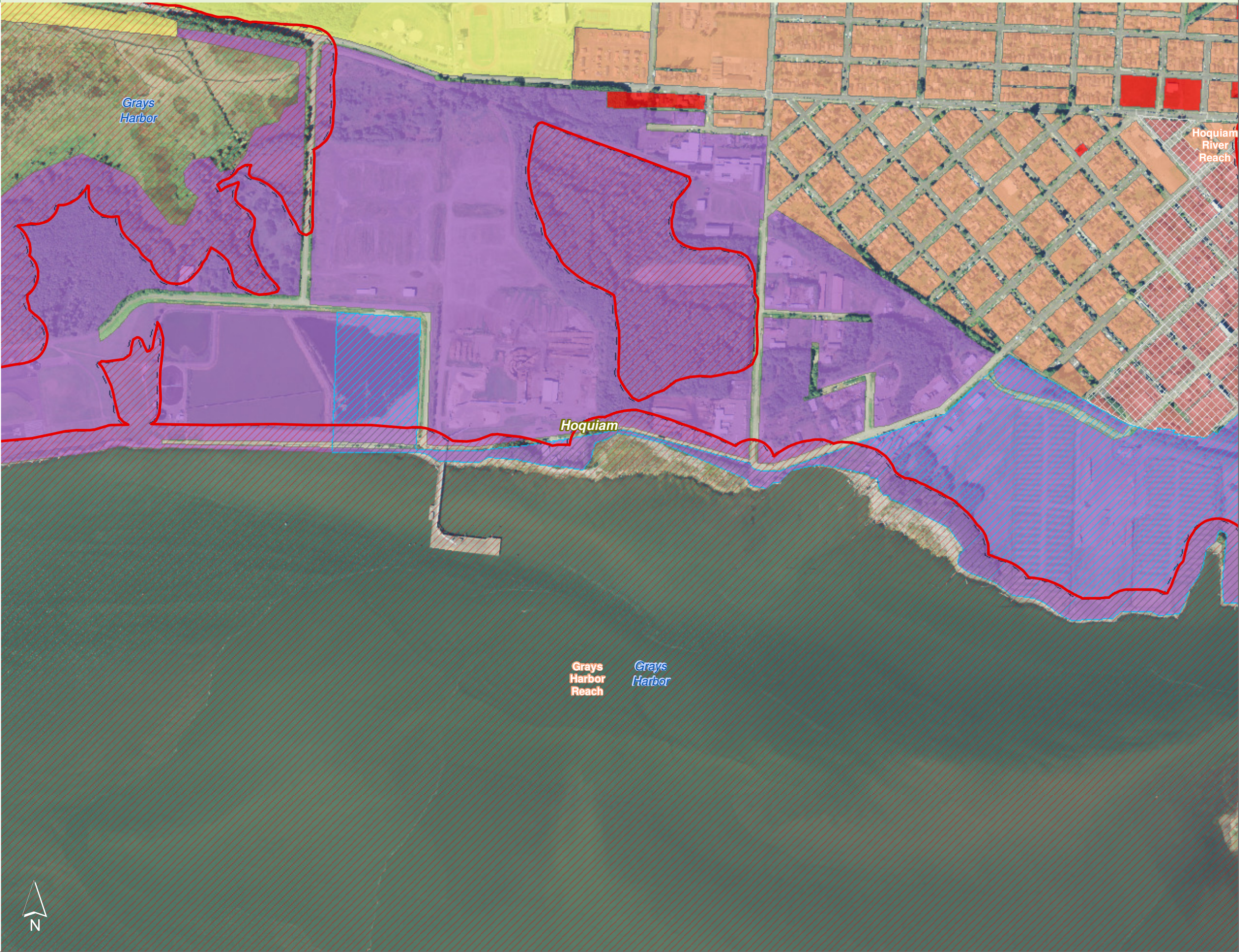
- City of Hoquiam Zoning Districts**
- C1 - General Commercial District
  - C2 - Downtown Commercial
  - I - Industrial District
  - R1 - Low Density Residential
  - R2 - High Density Residential
- City of Hoquiam Zoning Overlay District**
- Pedestrian Overlay District
  - Waterfront Overlay District

0 0.25 0.5 Miles



Source: Grays Harbor County, USFWS NWI (2011), FEMA Preliminary DFIRM (2013), DNR, WSDOT, Ecology, NRCS NAIP

Shoreline jurisdiction boundaries depicted on this map are approximate. They have not been formally delineated or surveyed and are intended for planning purposes only. Additional site-specific evaluation may be needed to confirm/verify information shown on this map.





Zoning

Figure 14.16: Hoquiam

Date: 10/2/2014

- Preliminary Shoreline Jurisdiction
- Reaches
- City Boundary
- SMA Rivers
- SMA Lakes
- Highways
- City of Hoquiam Zoning Districts
- C1 - General Commercial District
- C2 - Downtown Commercial
- I - Industrial District
- NR - Natural Resource District
- R1 - Low Density Residential
- R2 - High Density Residential
- LI - Light Industrial
- MI - Major Institutional
- RS - Single Family Residential
- City of Hoquiam Zoning Overlay District
- Pedestrian Overlay District
- Waterfront Overlay District
- City of Aberdeen Zoning
- CD - Downtown Commercial
- CG - General Commercial
- CR - Commercial/Residential
- I - Industrial

0 0.25 0.5 Miles



Source: Grays Harbor County, USFWS NWI (2011), FEMA Preliminary DFIRM (2013), DNR, WSDOT, Ecology, NRCS NAIP

Shoreline jurisdiction boundaries depicted on this map are approximate. They have not been formally delineated or surveyed and are intended for planning purposes only. Additional site-specific evaluation may be needed to confirm/verify information shown on this map.

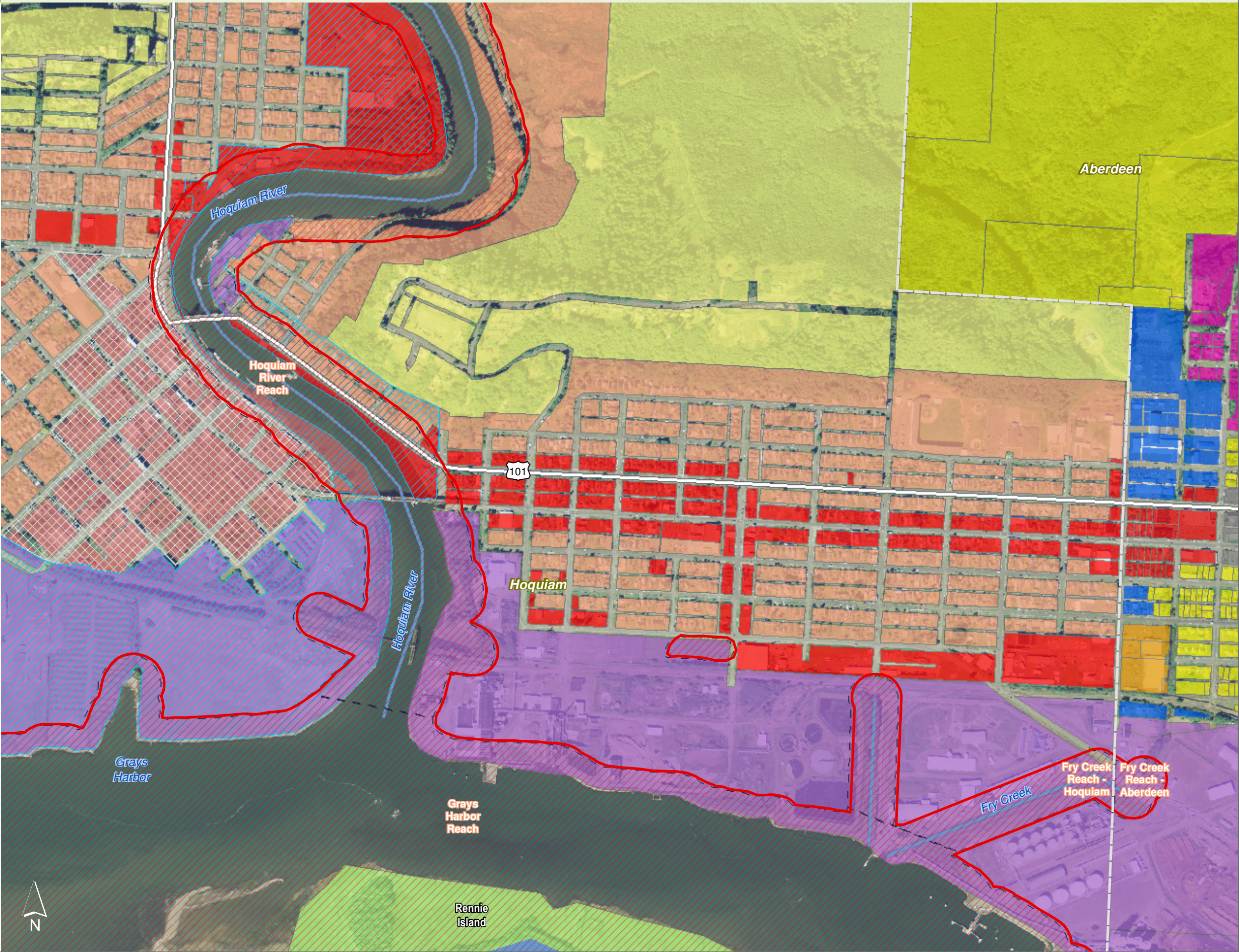











Figure 14.17: Hoquiam

Date: 10/2/2014

-  Preliminary Shoreline Jurisdiction
-  Reaches
-  City Boundary
-  SMA Rivers
-  SMA Lakes
-  Highways

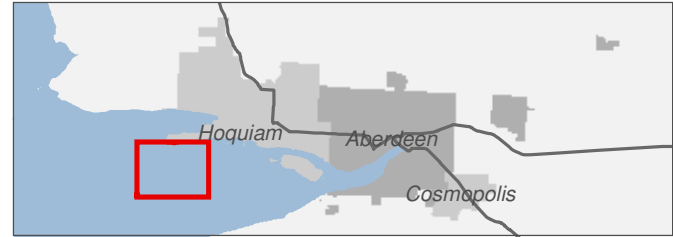
City of Hoquiam Zoning Districts

-  I - Industrial District

0 0.25 0.5 Miles

1:10,000

Area of interest in red



Source: Grays Harbor County, USFWS NWI (2011), FEMA Preliminary DFIRM (2013), DNR, WSDOT, Ecology, NRCS NAIP







Shoreline jurisdiction boundaries depicted on this map are approximate. They have not been formally delineated or surveyed and are intended for planning purposes only. Additional site-specific evaluation may be needed to confirm/verify information shown on this map.





Figure 14.18: Hoquiam

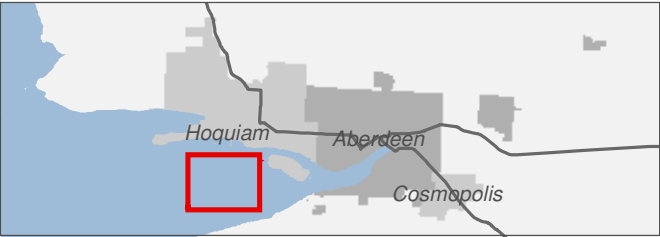
Date: 10/2/2014

-  Preliminary Shoreline Jurisdiction
-  Reaches
-  City Boundary
-  SMA Rivers
-  SMA Lakes
-  Highways

0 0.25 0.5 Miles

1:10,000

Area of interest in red



Source: Grays Harbor County, USFWS NWI (2011), FEMA Preliminary DFIRM (2013), DNR, WSDOT, Ecology, NRCS NAIP

Shoreline jurisdiction boundaries depicted on this map are approximate. They have not been formally delineated or surveyed and are intended for planning purposes only. Additional site-specific evaluation may be needed to confirm/verify information shown on this map.

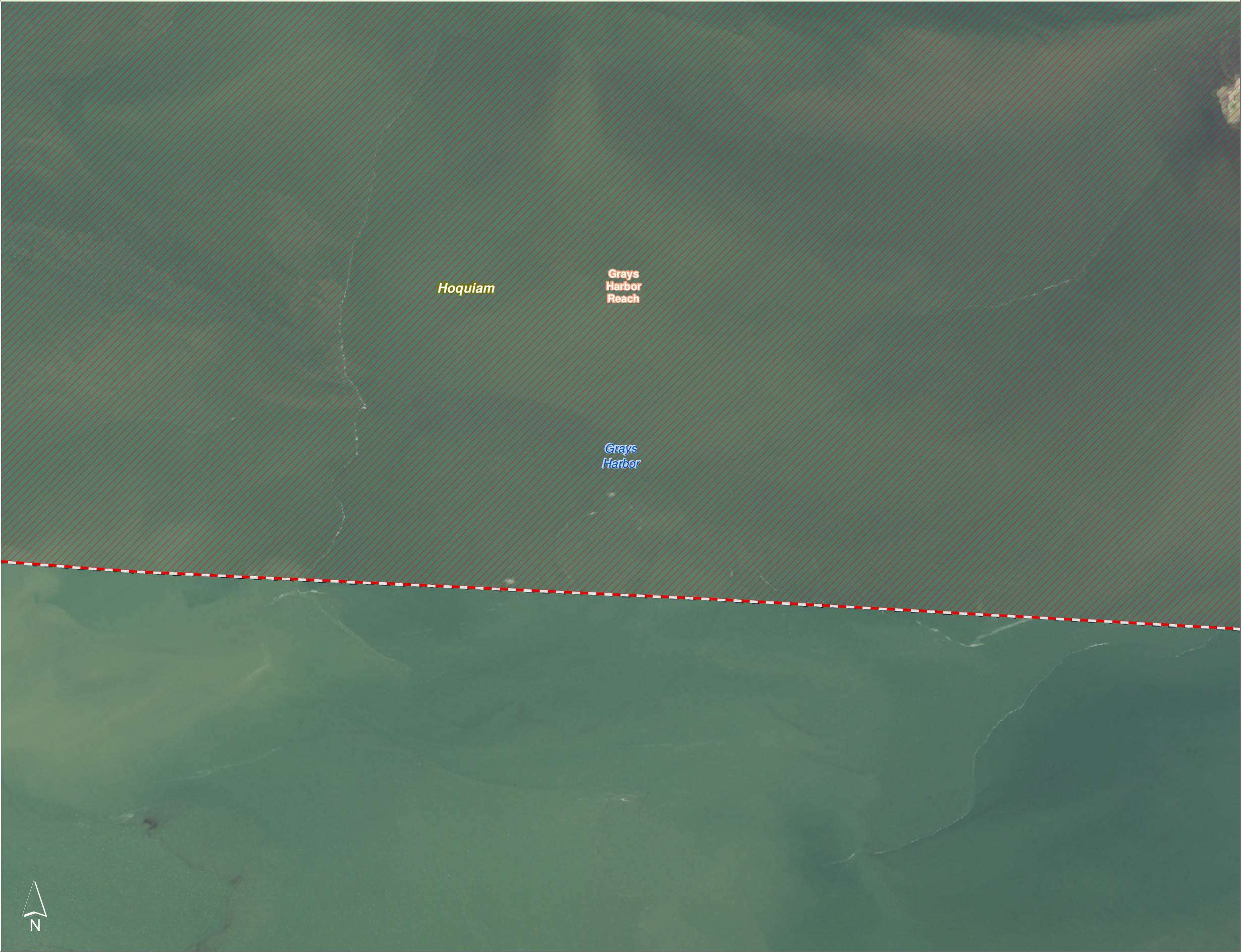




Figure 14.19: Hoquiam

Date: 10/2/2014

- Preliminary Shoreline Jurisdiction
- Reaches
- City Boundary
- SMA Rivers
- SMA Lakes
- Highways

City of Hoquiam Zoning Districts

- I - Industrial District
- NR - Natural Resource District

City of Aberdeen Zoning

- I - Industrial
- RS - Single Family Residential

0 0.25 0.5 Miles

1:10,000

Area of interest in red



Source: Grays Harbor County, USFWS NWI (2011), FEMA Preliminary DFIRM (2013), DNR, WSDOT, Ecology, NRCS NAIP

Shoreline jurisdiction boundaries depicted on this map are approximate. They have not been formally delineated or surveyed and are intended for planning purposes only. Additional site-specific evaluation may be needed to confirm/verify information shown on this map.

