


Geological Hazards

Figure 15.1: Hoquiam


Date: 10/2/2014

Tsunami Inundation


 Cascadia Scenario 1A Seismic Event

Liquefaction Susceptibility

 Moderate to High

 Low to Moderate

 Very Low

 Preliminary Shoreline Jurisdiction

 Reaches

 City Boundary

 SMA Rivers

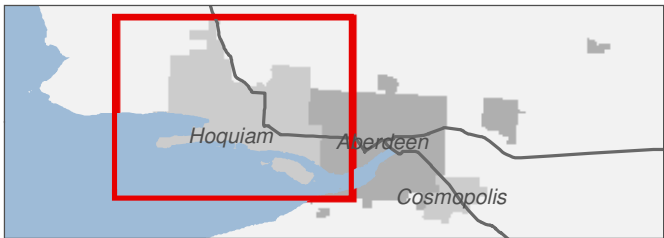
 SMA Lakes

 Highways

0 0.25 0.5 Miles

1:33,000

Area of interest in red



Source: Grays Harbor County, USFWS NWI (2011), FEMA Preliminary DFIRM (2013), WA DNR, WSDOT, DOE, NRCS NAIP (2013)

Shoreline jurisdiction boundaries depicted on this map are approximate. They have not been formally delineated or surveyed and are intended for planning purposes only. Additional site-specific evaluation may be needed to confirm/verify information shown on this map.

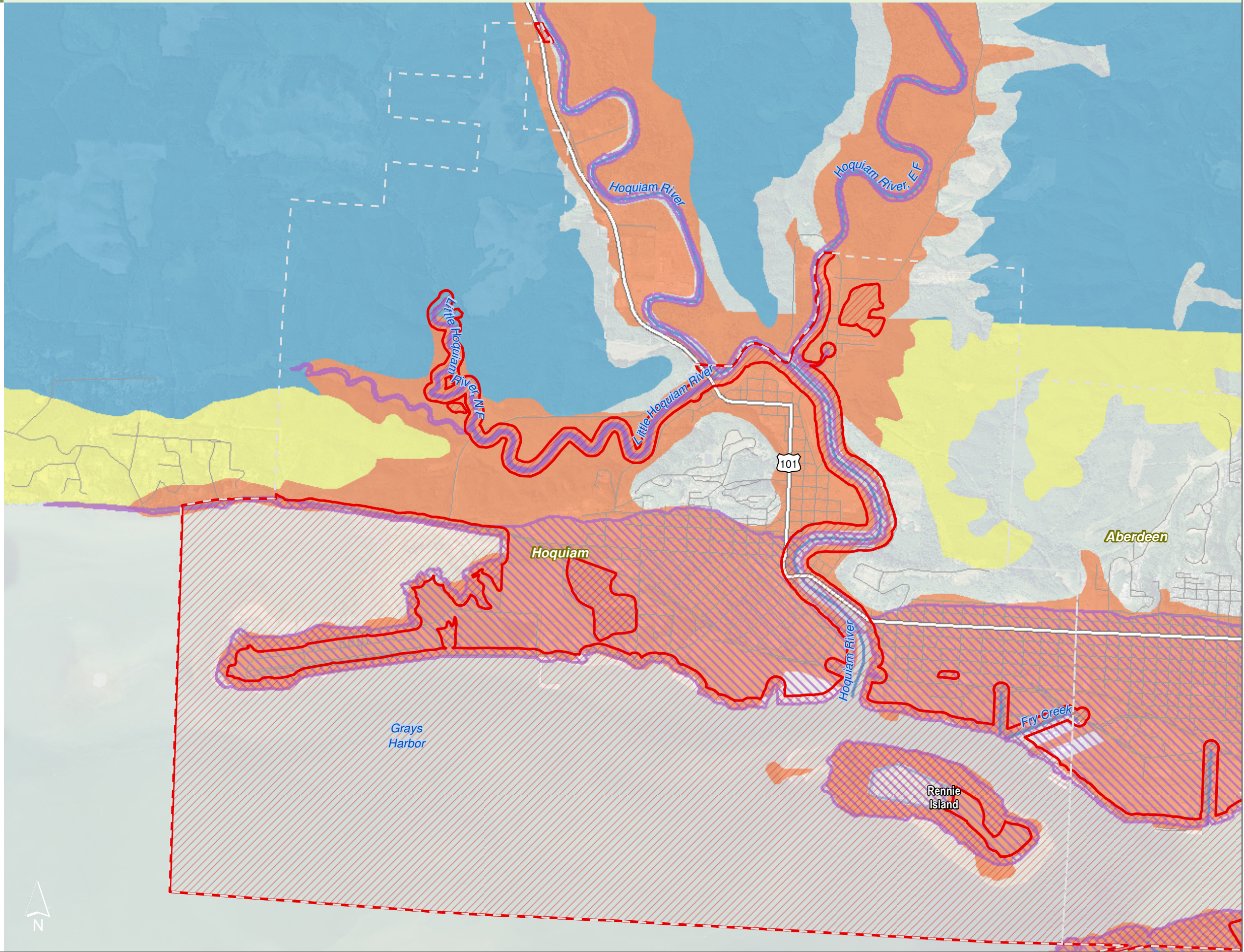
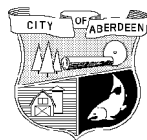


Figure 15.11: Hoquiam

Date: 10/2/2014

Tsunami Inundation

Cascadia Scenario 1A Seismic Event

Liquefaction Susceptibility

Moderate to High

Very Low

Preliminary Shoreline Jurisdiction

Reaches

City Boundary

SMA Rivers

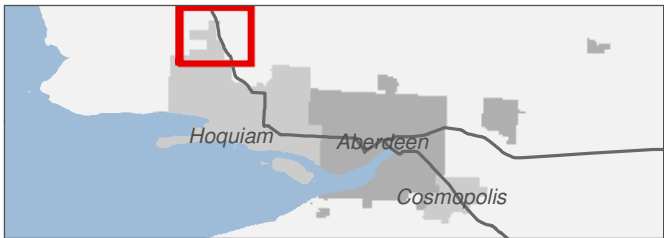
SMA Lakes

Highways

0 0.25 0.5 Miles

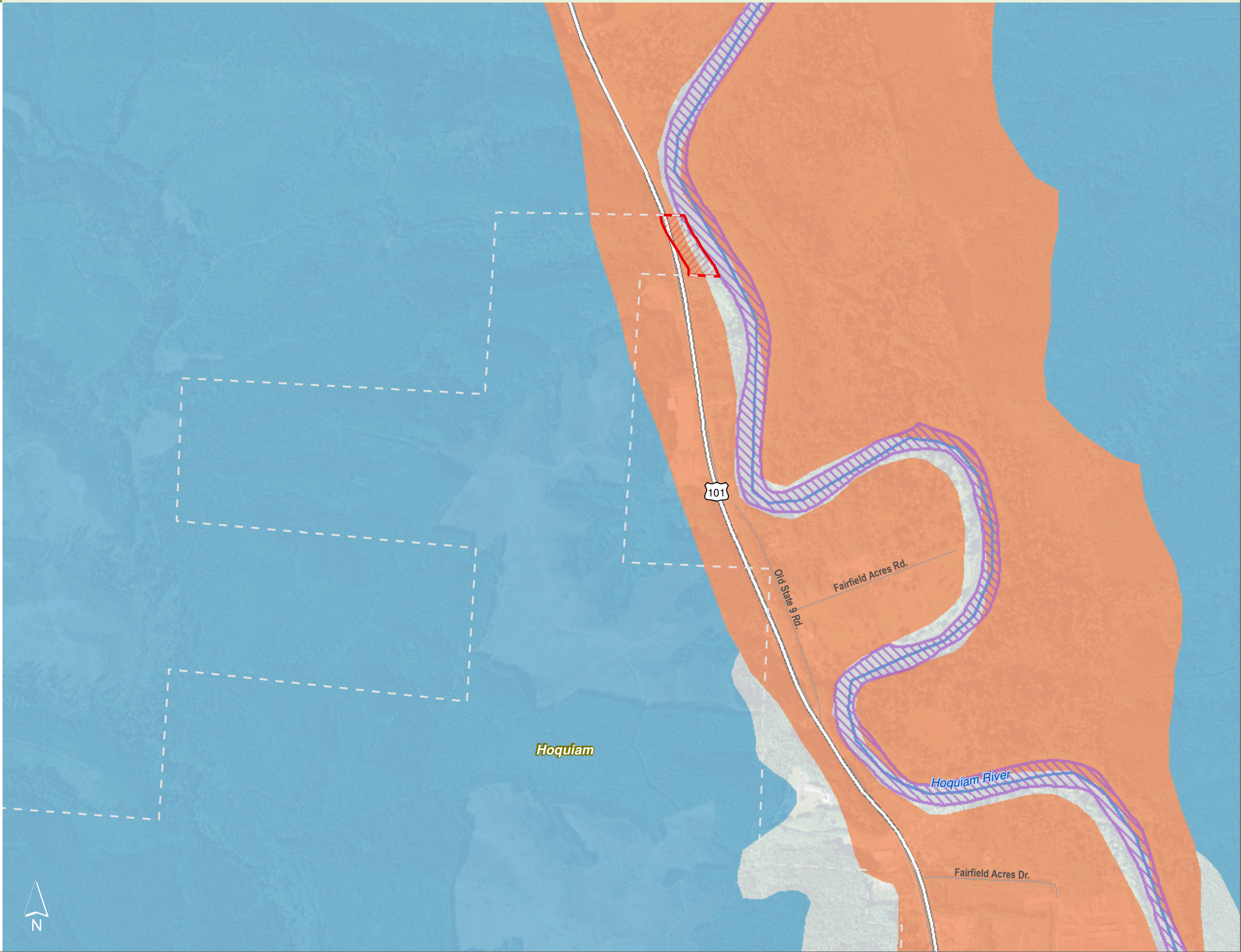
1:10,000

Area of interest in red



Source: Grays Harbor County, USFWS NWI (2011), FEMA Preliminary DFIRM (2013), WA DNR, WSDOT, DOE, NRCS NAIP (2013)

Shoreline jurisdiction boundaries depicted on this map are approximate. They have not been formally delineated or surveyed and are intended for planning purposes only. Additional site-specific evaluation may be needed to confirm/verify information shown on this map.




Geological Hazards


Figure 15.12: Hoquiam


Date: 10/2/2014

Tsunami Inundation


 Cascadia Scenario 1A Seismic Event

Liquefaction Susceptibility

 Moderate to High

 Low to Moderate

 Very Low

 Preliminary Shoreline Jurisdiction

 Reaches

 City Boundary

 SMA Rivers

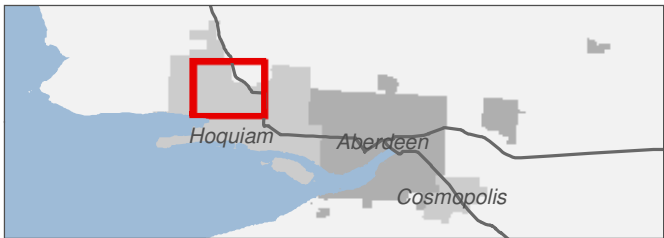
 SMA Lakes

 Highways

0 0.25 0.5 Miles

1:10,000

Area of interest in red

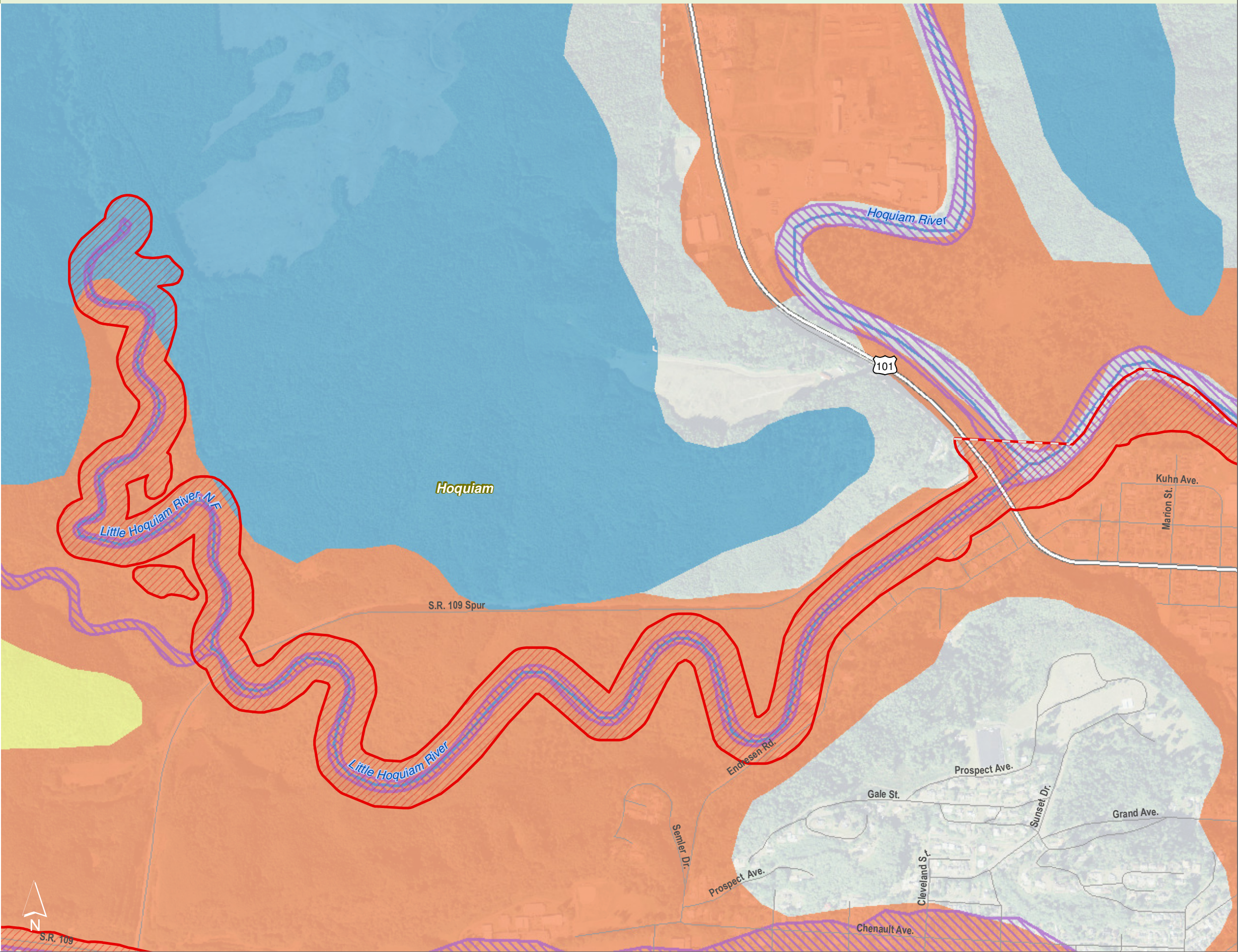


Source: Grays Harbor County, USFWS NWI (2011), FEMA Preliminary DFIRM (2013), WA DNR, WSDOT, DOE, NRCS NAIP (2013)

Shoreline jurisdiction boundaries depicted on this map are approximate. They have not been formally delineated or surveyed and are intended for planning purposes only. Additional site-specific evaluation may be needed to confirm/verify information shown on this map.



S.R. 109




Geological Hazards

Figure 15.13: Hoquiam


Date: 10/2/2014

Tsunami Inundation


 Cascadia Scenario 1A Seismic Event

Liquefaction Susceptibility

 Moderate to High

 Low to Moderate

 Very Low

 Preliminary Shoreline Jurisdiction

 Reaches

 City Boundary

 SMA Rivers

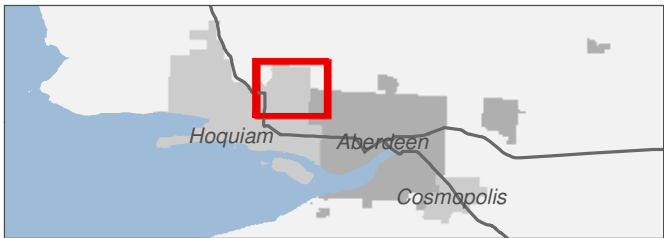
 SMA Lakes

 Highways

0 0.25 0.5 Miles

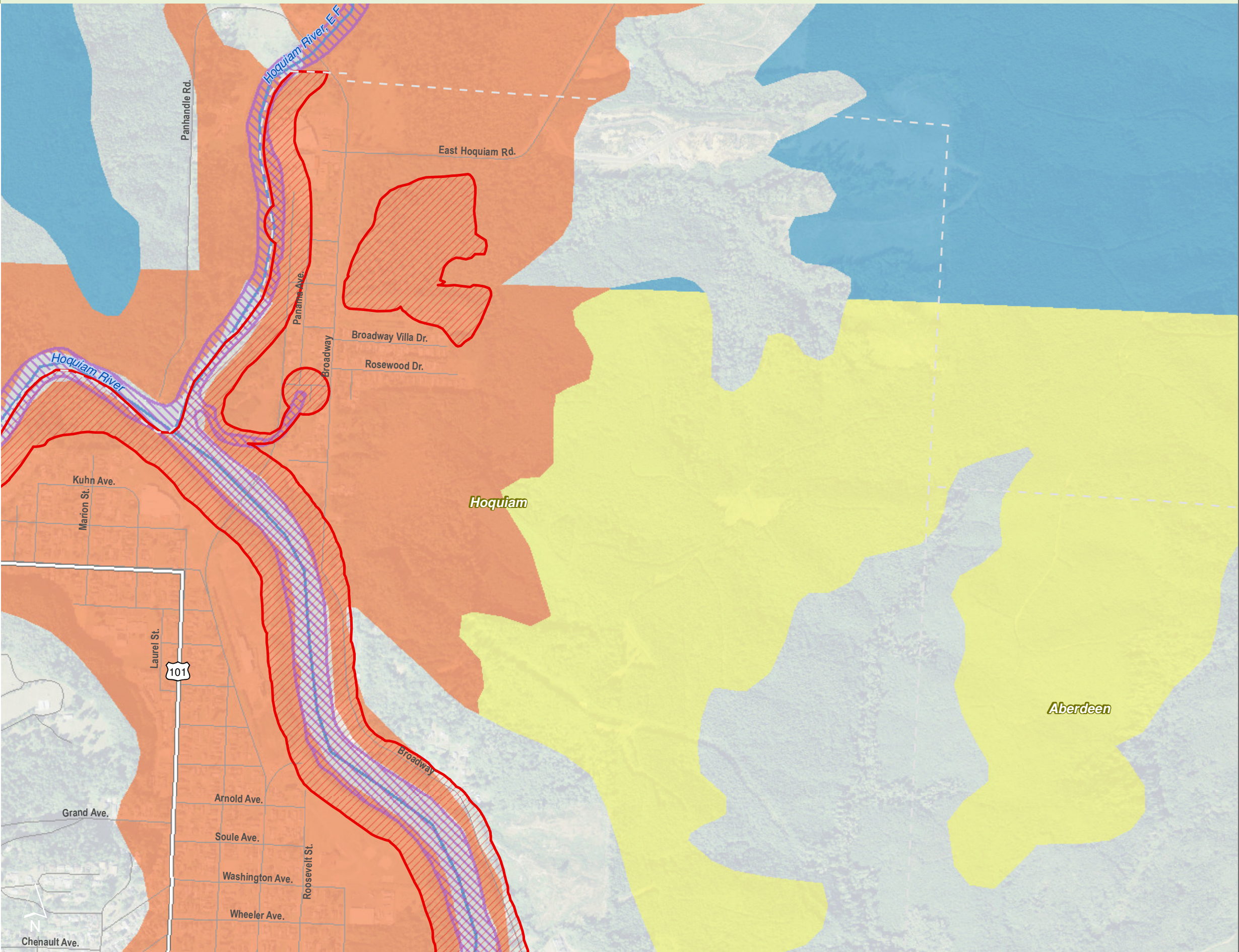
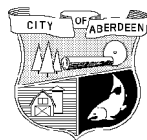
1:10,000

Area of interest in red



Source: Grays Harbor County, USFWS NWI (2011), FEMA Preliminary DFIRM (2013), WA DNR, WSDOT, DOE, NRCS NAIP (2013)

Shoreline jurisdiction boundaries depicted on this map are approximate. They have not been formally delineated or surveyed and are intended for planning purposes only. Additional site-specific evaluation may be needed to confirm/verify information shown on this map.




Geological Hazards


Figure 15.14: Hoquiam

Date: 10/2/2014


Tsunami Inundation

 Cascadia Scenario 1A Seismic Event

Liquefaction Susceptibility

 Moderate to High

 Low to Moderate

 Preliminary Shoreline Jurisdiction

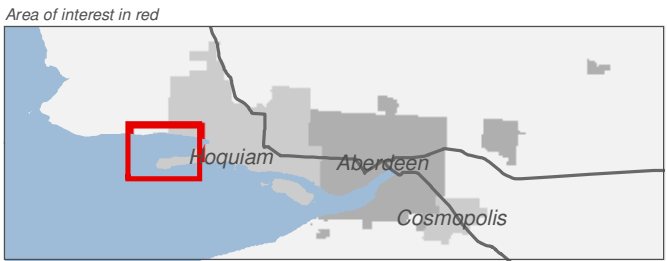
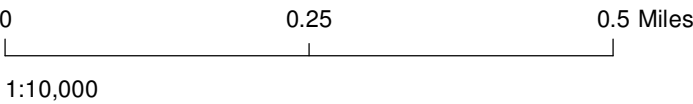
 Reaches

 City Boundary

 SMA Rivers

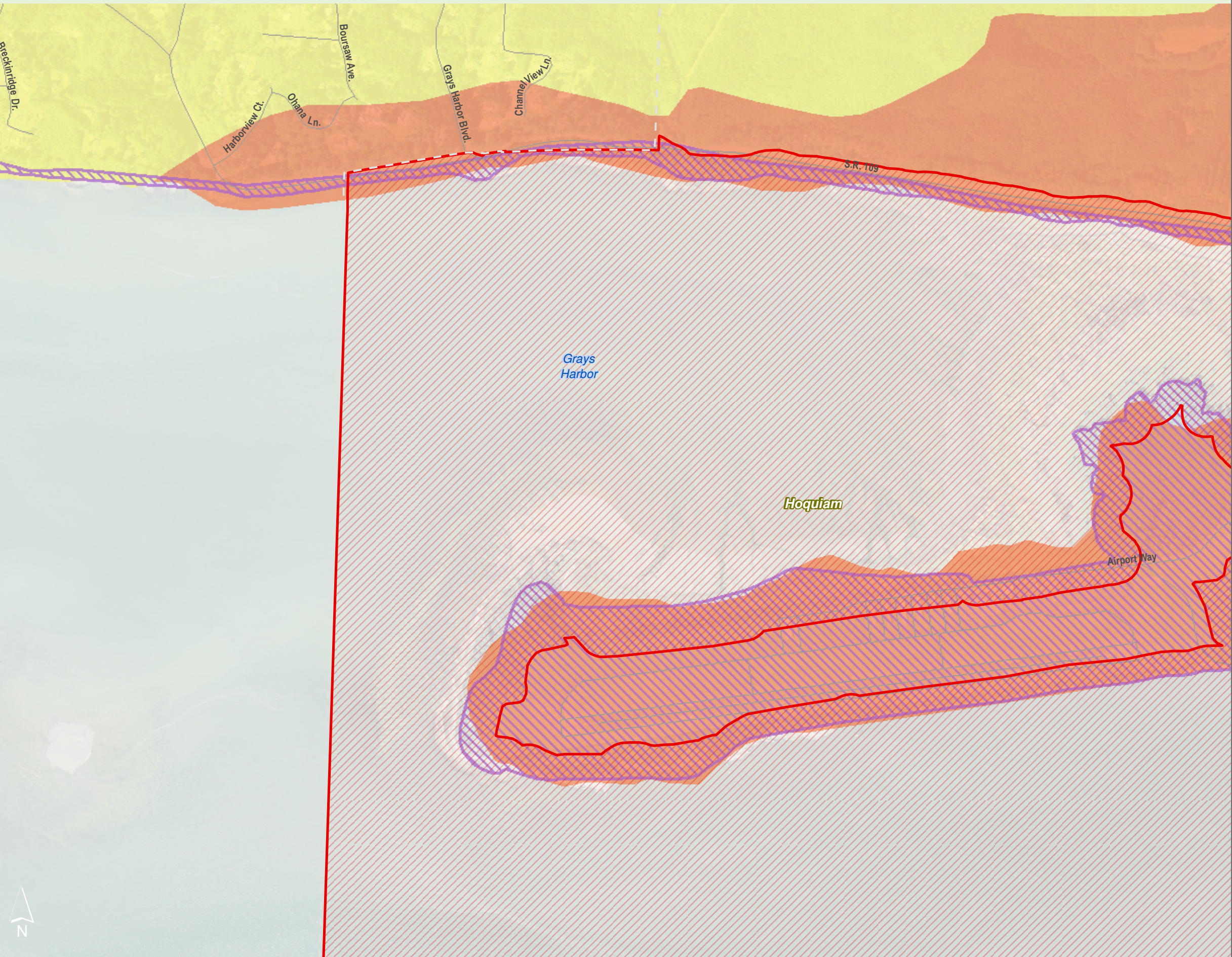
 SMA Lakes

 Highways



Source: Grays Harbor County, USFWS NWI (2011), FEMA Preliminary DFIRM (2013), WA DNR, WSDOT, DOE, NRCS NAIP (2013)

Shoreline jurisdiction boundaries depicted on this map are approximate. They have not been formally delineated or surveyed and are intended for planning purposes only. Additional site-specific evaluation may be needed to confirm/verify information shown on this map.




Geological Hazards


Figure 15.15: Hoquiam


Date: 10/2/2014

Tsunami Inundation

 Cascadia Scenario 1A Seismic Event

Liquefaction Susceptibility

 Moderate to High

 Preliminary Shoreline Jurisdiction

 Reaches

 City Boundary

 SMA Rivers

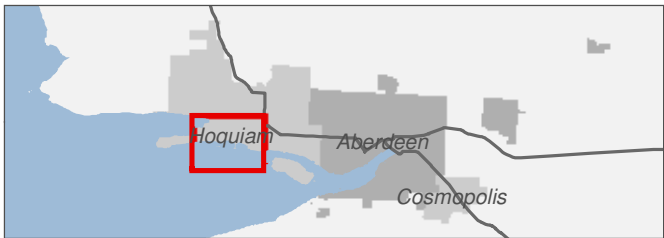
 SMA Lakes

 Highways

0 0.25 0.5 Miles

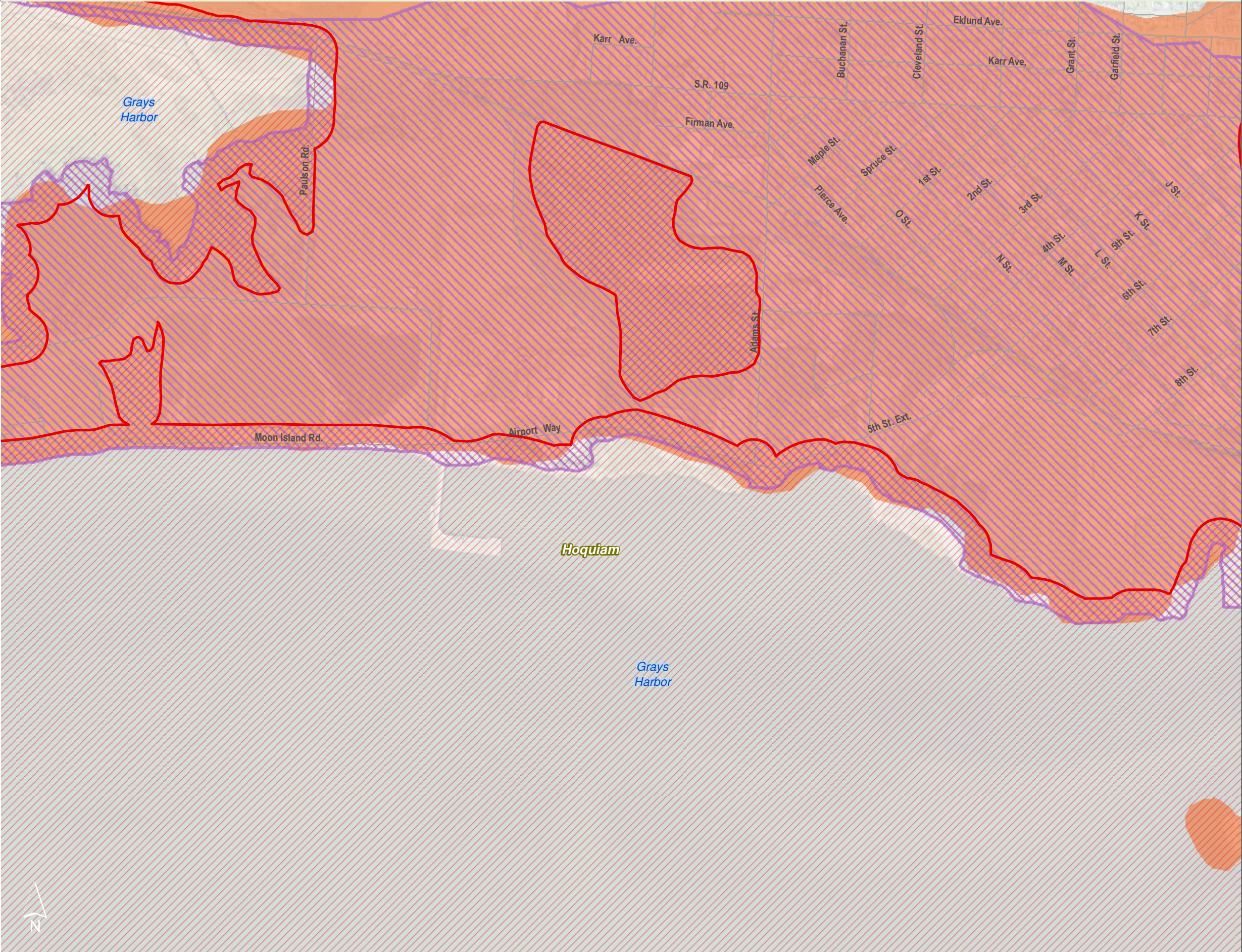
1:10,000

Area of interest in red



Source: Grays Harbor County, USFWS NWI (2011), FEMA Preliminary DFIRM (2013), WA DNR, WSDOT, DOE, NRCS NAIP (2013)

Shoreline jurisdiction boundaries depicted on this map are approximate. They have not been formally delineated or surveyed and are intended for planning purposes only. Additional site-specific evaluation may be needed to confirm/verify information shown on this map.




Geological Hazards

Figure 15.16: Hoquiam


Date: 10/2/2014


Tsunami Inundation

 Cascadia Scenario 1A Seismic Event

Liquefaction Susceptibility

 Moderate to High

 Low to Moderate

 Preliminary Shoreline Jurisdiction

 Reaches

 City Boundary

 SMA Rivers

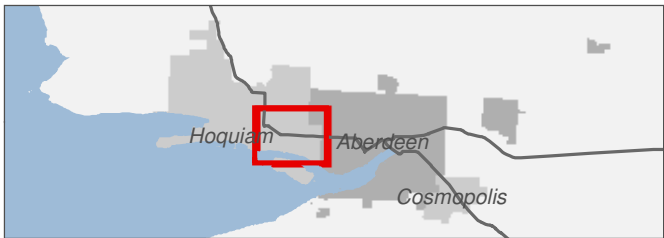
 SMA Lakes

 Highways

0 0.25 0.5 Miles

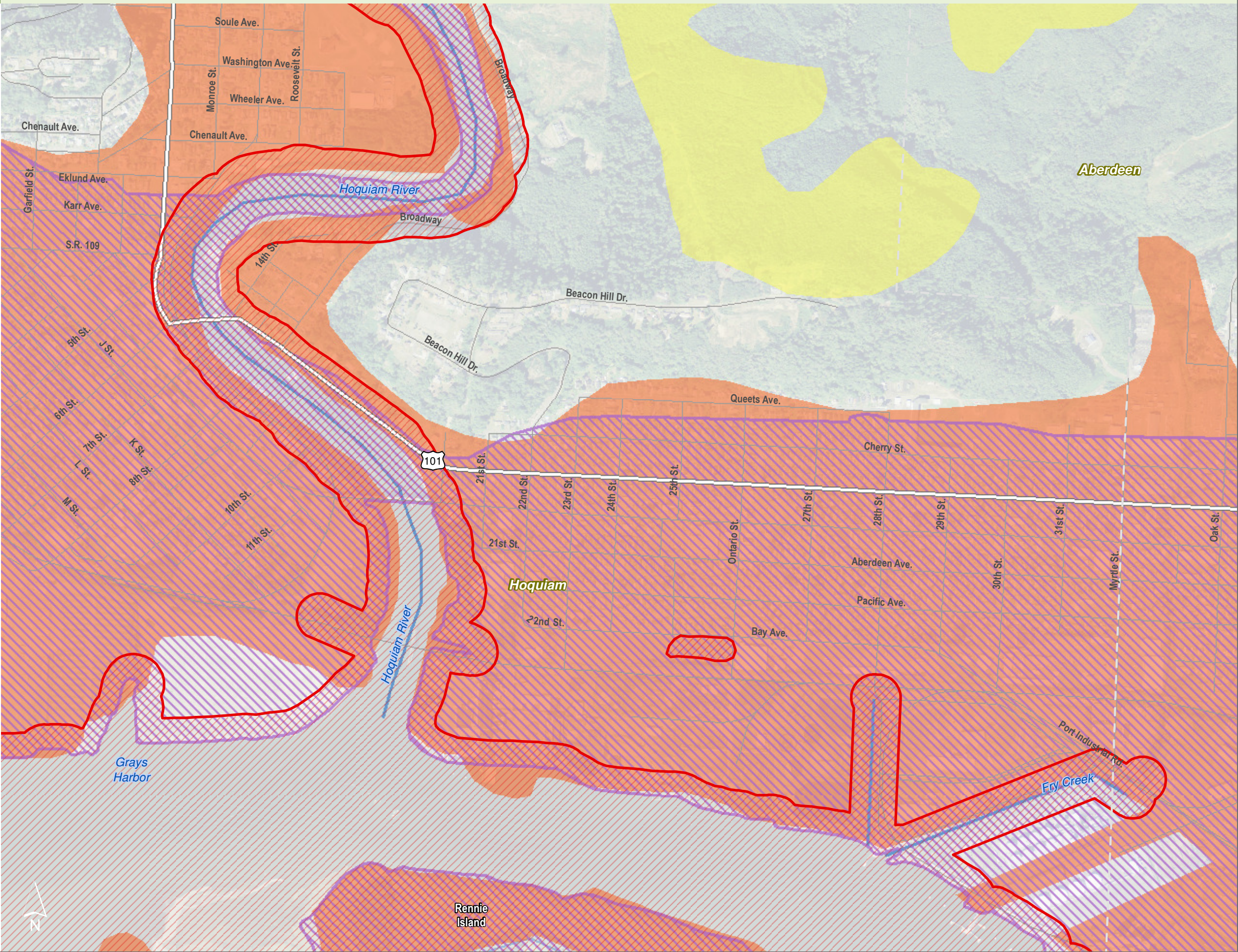
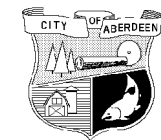
1:10,000

Area of interest in red



Source: Grays Harbor County, USFWS NWI (2011), FEMA Preliminary DFIRM (2013), WA DNR, WSDOT, DOE, NRCS NAIP (2013)

Shoreline jurisdiction boundaries depicted on this map are approximate. They have not been formally delineated or surveyed and are intended for planning purposes only. Additional site-specific evaluation may be needed to confirm/verify information shown on this map.




Geological Hazards


Figure 15.17: Hoquiam


Date: 10/2/2014

Tsunami Inundation

 Cascadia Scenario 1A Seismic Event

Liquefaction Susceptibility

 Moderate to High

 Preliminary Shoreline Jurisdiction

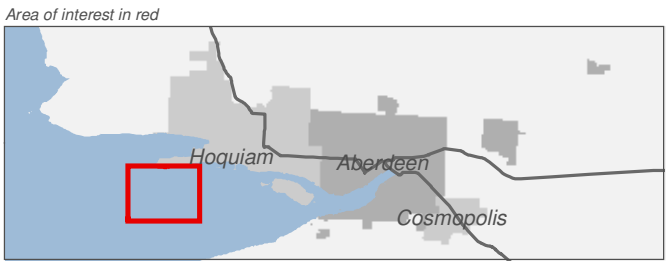
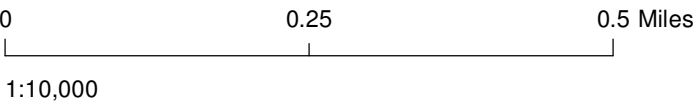
 Reaches

 City Boundary

 SMA Rivers

 SMA Lakes

 Highways



Source: Grays Harbor County, USFWS NWI (2011), FEMA Preliminary DFIRM (2013), WA DNR, WSDOT, DOE, NRCS NAIP (2013)

Shoreline jurisdiction boundaries depicted on this map are approximate. They have not been formally delineated or surveyed and are intended for planning purposes only. Additional site-specific evaluation may be needed to confirm/verify information shown on this map.



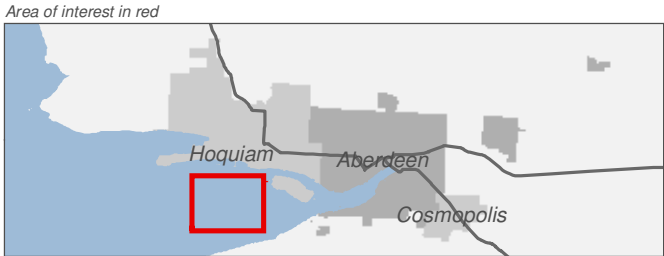
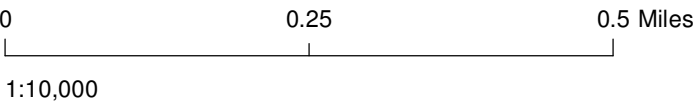
Geological Hazards

Figure 15.18: Hoquiam

Date: 10/2/2014

Liquefaction Susceptibility

- Moderate to High
- Preliminary Shoreline Jurisdiction
- Reaches
- City Boundary
- SMA Rivers
- SMA Lakes
- Highways



Source: Grays Harbor County, USFWS NWI (2011), FEMA Preliminary DFIRM (2013), WA DNR, WSDOT, DOE, NRCS NAIP (2013)

Shoreline jurisdiction boundaries depicted on this map are approximate. They have not been formally delineated or surveyed and are intended for planning purposes only. Additional site-specific evaluation may be needed to confirm/verify information shown on this map.




Geological Hazards

Figure 15.19: Hoquiam


Date: 10/2/2014

Tsunami Inundation

 Cascadia Scenario 1A Seismic Event

Liquefaction Susceptibility

 Moderate to High

 Preliminary Shoreline Jurisdiction

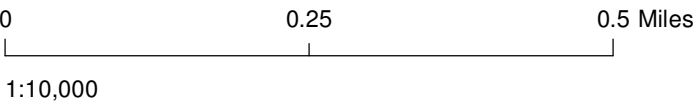
 Reaches

 City Boundary

 SMA Rivers

 SMA Lakes

 Highways



Source: Grays Harbor County, USFWS NWI (2011), FEMA Preliminary DFIRM (2013), WA DNR, WSDOT, DOE, NRCS NAIP (2013)

Shoreline jurisdiction boundaries depicted on this map are approximate. They have not been formally delineated or surveyed and are intended for planning purposes only. Additional site-specific evaluation may be needed to confirm/verify information shown on this map.

