

Figure 16.1: Hoquiam

Date: 10/2/2014

- Legend:**

  - Preliminary Shoreline Jurisdiction
  - Reaches
  - City Boundary
  - SMA Rivers
  - SMA Lakes
  - Highways

**Public Access**

  - Boat Launches

**Trail Locations**

  - Bike/Ped
  - Walk/Hike
  - Walking

**Trail Routes**

  - Bike and Pedestrian
  - Pedestrian

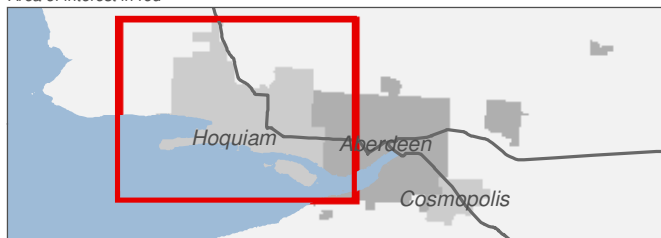
**Parks and Recreation**

  - Cemetery
  - Facility
  - Farmer's Market
  - Park
  - Refuge
  - School

0	0.25	0.5 Miles
---	------	-----------

1:33,000

Area of interest in red



Source: Grays Harbor County, USFWS NWI (2011), FEMA Preliminary DFIRM (2013), DNR, WSDOT, Ecology, NRCS NAIP

Shoreline jurisdiction boundaries depicted on this map are approximate. They have not been formally delineated or surveyed and are intended for planning purposes only. Additional site-specific evaluation may be needed to confirm/verify information shown on this map.

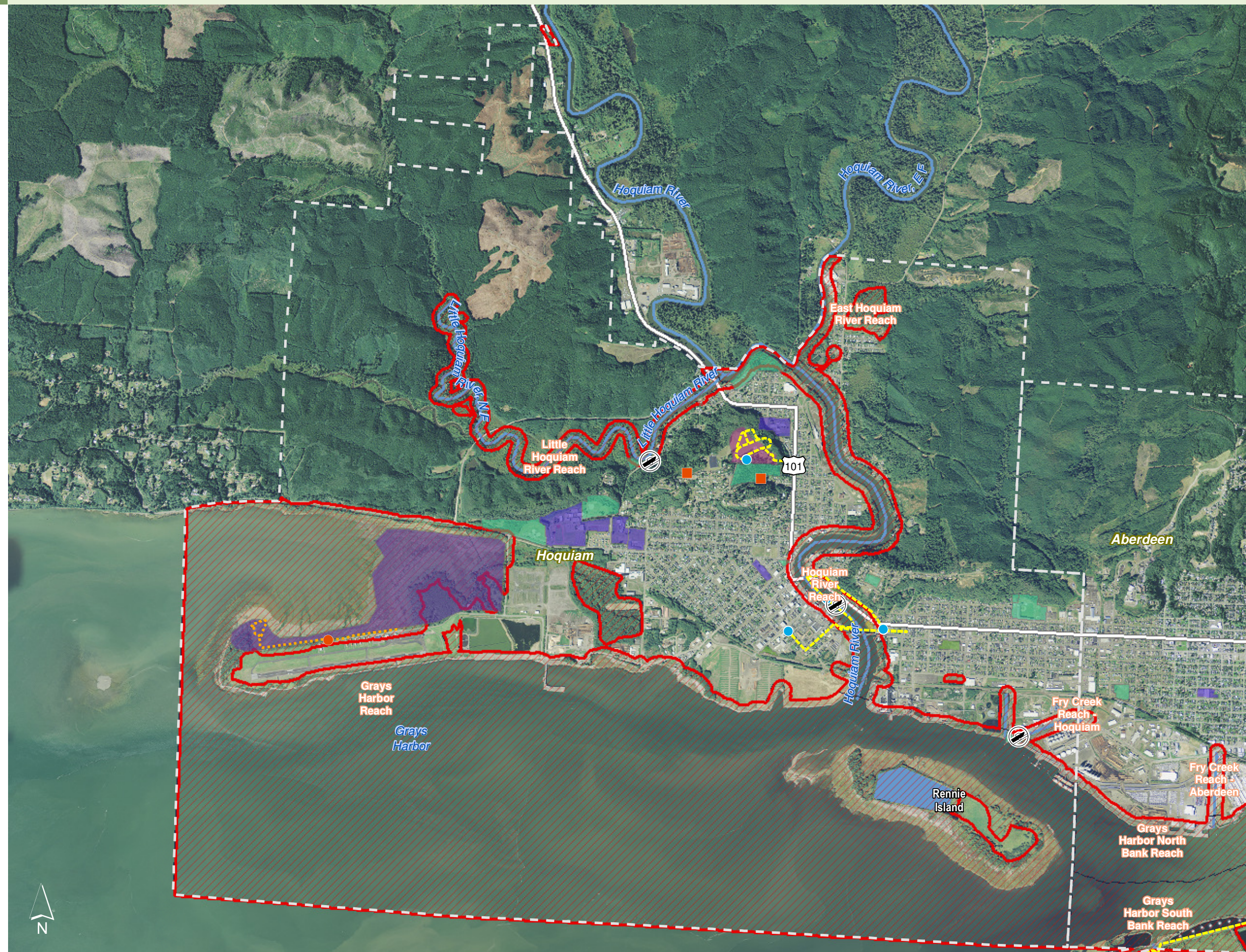









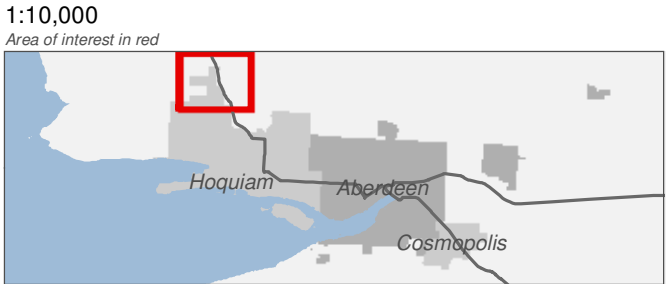


Figure 16.11: Hoquiam

Date: 10/2/2014

-  Preliminary Shoreline Jurisdiction
-  Reaches
-  City Boundary
-  SMA Rivers
-  SMA Lakes
-  Highways
- Public Access**
  -  Boat Launches

0 0.25 0.5 Miles



Source: Grays Harbor County, USFWS NWI (2011), FEMA Preliminary DFIRM (2013), DNR, WSDOT, Ecology, NRCS NAIP

Shoreline jurisdiction boundaries depicted on this map are approximate. They have not been formally delineated or surveyed and are intended for planning purposes only. Additional site-specific evaluation may be needed to confirm/verify information shown on this map.





Figure 16.12: Hoquiam

Date: 10/2/2014

- Legend:**

  - Preliminary Shoreline Jurisdiction
  - Reaches
  - City Boundary
  - SMA Rivers
  - SMA Lakes
  - Highways
  - Public Access**
    - Boat Launches
  - Trail Locations**
    - Bike/Ped
    - Walk/Hike
  - Trail Routes**
    - Bike and Pedestrian
  - Parks and Recreation**
    - Cemetery
    - Park
    - School

0 0.25 0.5 Miles

1:10,000

*Area of interest in red*



Source: Grays Harbor County, USFWS NWI (2011), FEMA Preliminary DFIRM (2013), DNR, WSDOT, Ecology, NRCS NAIP

Shoreline jurisdiction boundaries depicted on this map are approximate. They have not been formally delineated or surveyed and are intended for planning purposes only. Additional site-specific evaluation may be needed to confirm/verify information shown on this map.

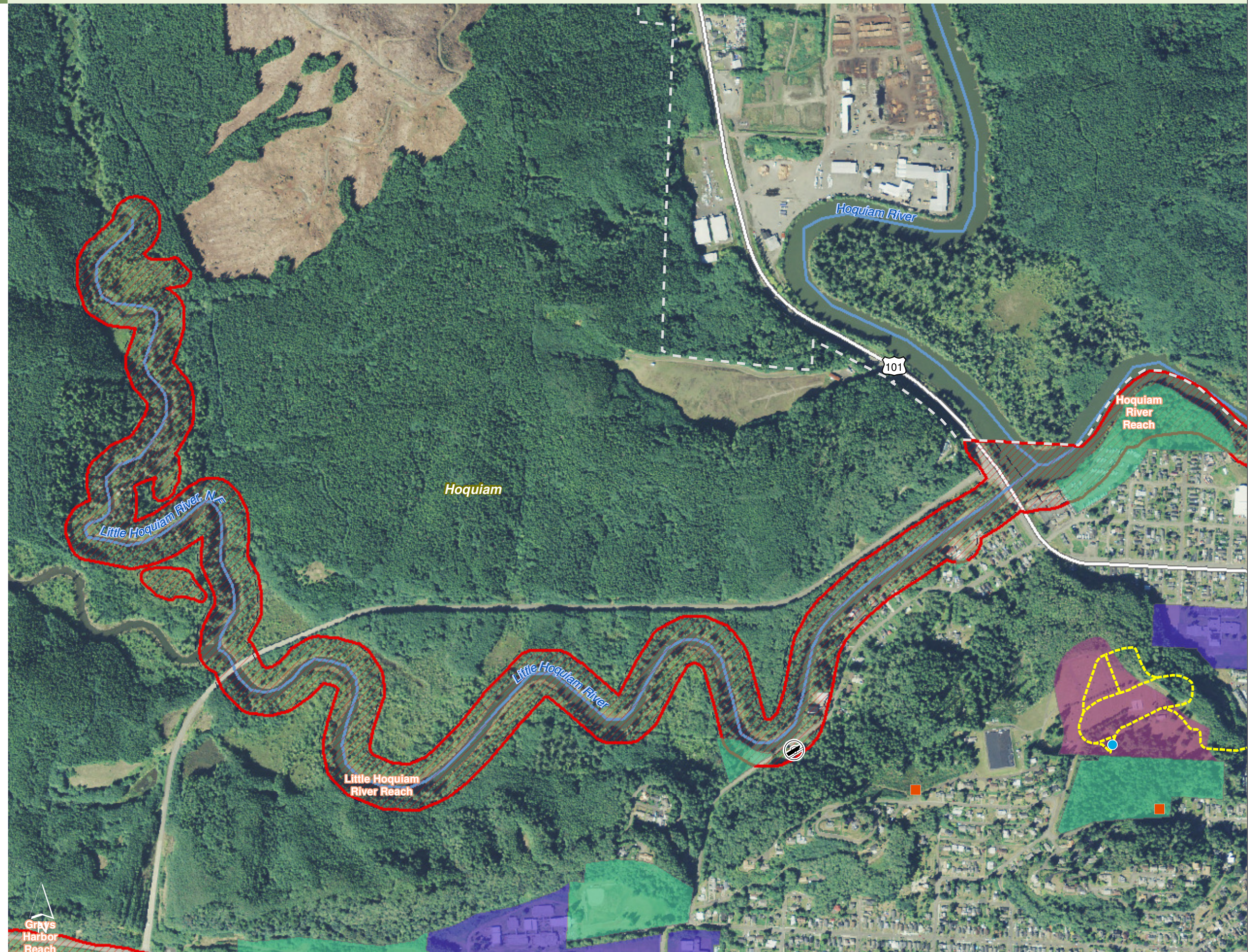




Figure 16.13: Hoquiam

Date: 10/2/2014

Preliminary Shoreline Jurisdiction

Reaches

City Boundary

SMA Rivers

SMA Lakes

Highways

Public Access

Boat Launches

Trail Locations

Bike/Ped

Walk/Hike

Trail Routes

Bike and Pedestrian

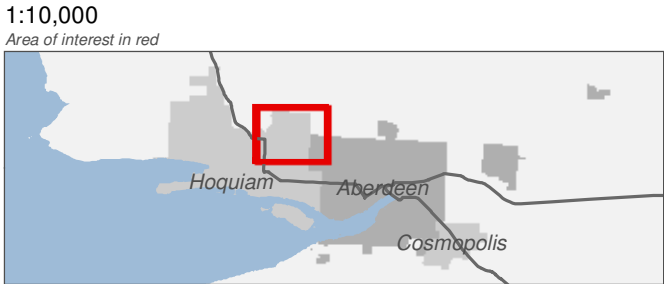
Parks and Recreation

Cemetery

Park

School

0 0.25 0.5 Miles



Source: Grays Harbor County, USFWS NWI (2011), FEMA Preliminary DFIRM (2013), DNR, WSDOT, Ecology, NRCS NAIP

Shoreline jurisdiction boundaries depicted on this map are approximate. They have not been formally delineated or surveyed and are intended for planning purposes only. Additional site-specific evaluation may be needed to confirm/verify information shown on this map.

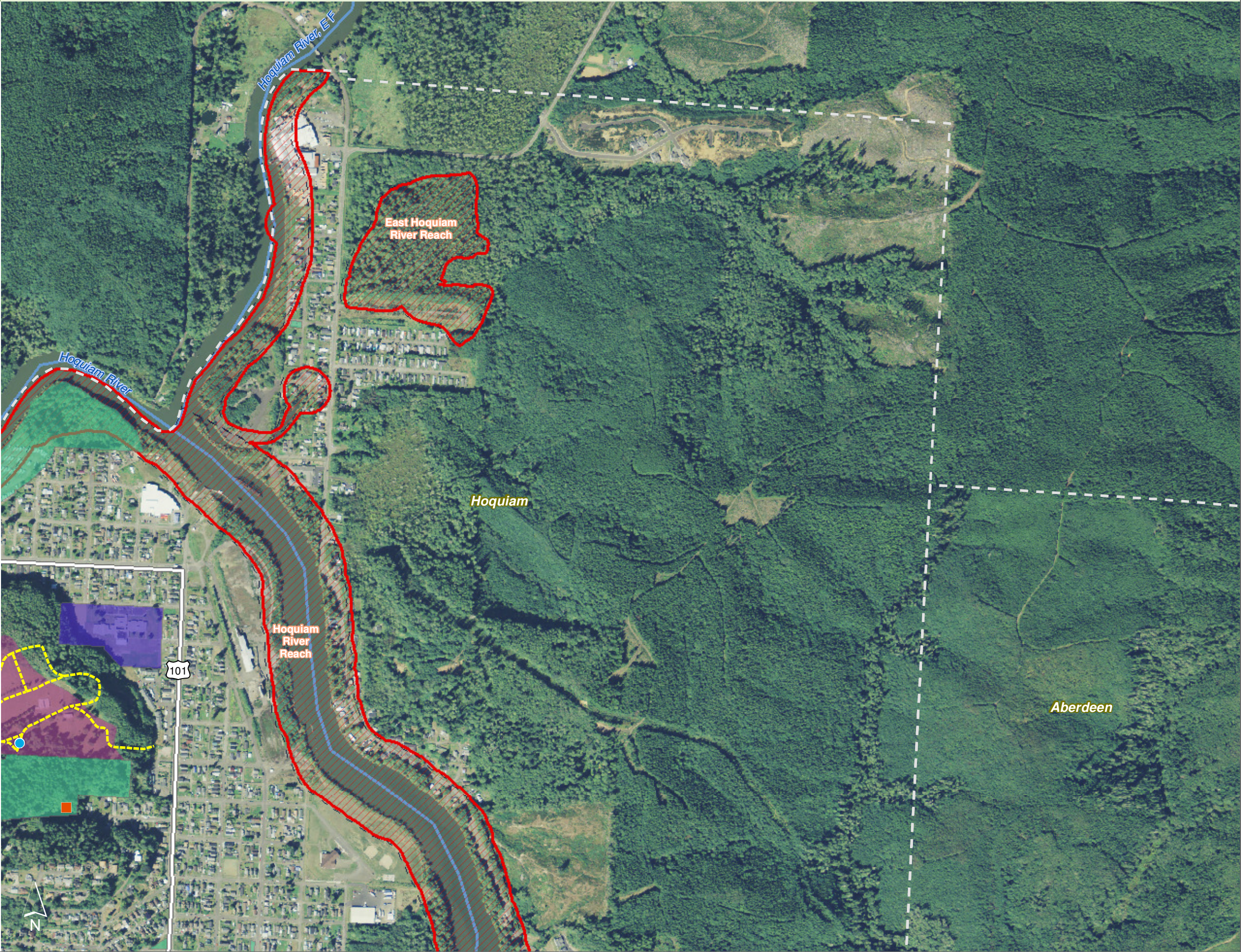




Figure 16.14: Hoquiam

Date: 10/2/2014

Preliminary Shoreline Jurisdiction

Reaches

City Boundary

SMA Rivers

SMA Lakes

Highways

Public Access

Parks and Recreation

Boat Launches

Refuge

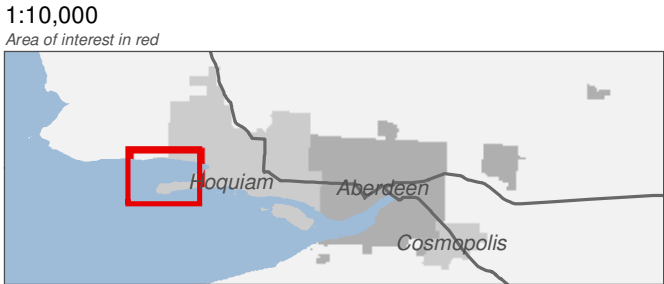
Trail Locations

Walking

Trail Routes

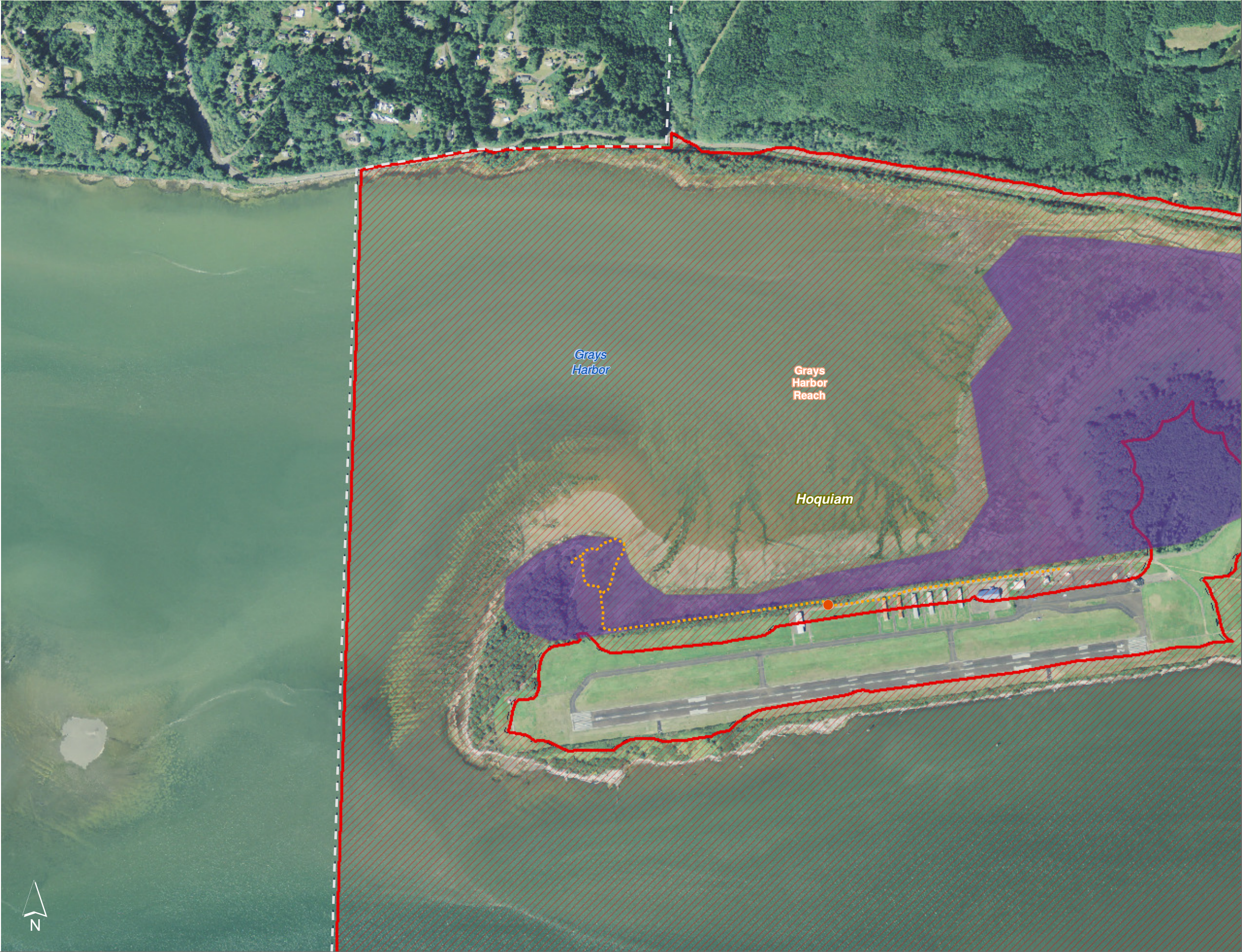
Pedestrian

0 0.25 0.5 Miles



Source: Grays Harbor County, USFWS NWI (2011), FEMA Preliminary DFIRM (2013), DNR, WSDOT, Ecology, NRCS NAIP

Shoreline jurisdiction boundaries depicted on this map are approximate. They have not been formally delineated or surveyed and are intended for planning purposes only. Additional site-specific evaluation may be needed to confirm/verify information shown on this map.





# Public Access

Figure 16.15: Hoquiam

Date: 10/2/2014

Preliminary Shoreline Jurisdiction

Reaches

City Boundary

SMA Rivers

SMA Lakes

Highways

Public Access

Boat Launches

Trail Locations

Bike/Ped

Parks and Recreation

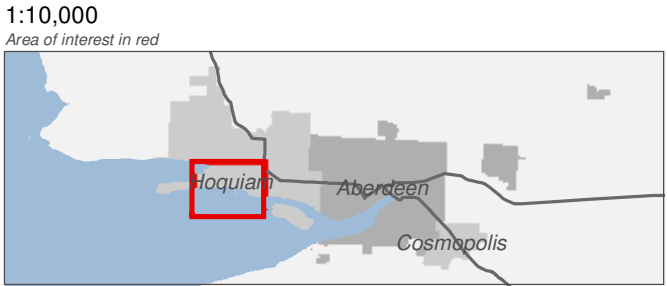
Facility

Park

Refuge

School

0 0.25 0.5 Miles



Source: Grays Harbor County, USFWS NWI (2011), FEMA Preliminary DFIRM (2013), DNR, WSDOT, Ecology, NRCS NAIP

Shoreline jurisdiction boundaries depicted on this map are approximate. They have not been formally delineated or surveyed and are intended for planning purposes only. Additional site-specific evaluation may be needed to confirm/verify information shown on this map.





# Public Access

Figure 16.16: Hoquiam

Date: 10/2/2014

Preliminary Shoreline Jurisdiction

Reaches

City Boundary

SMA Rivers

SMA Lakes

Highways

Public Access

Boat Launches

Trail Locations

Bike/Ped

Trail Routes

Bike and Pedestrian

Parks and Recreation

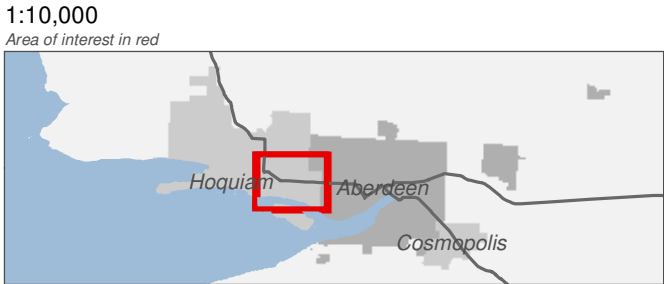
Facility

Famer's Market

Park

School

0 0.25 0.5 Miles



Source: Grays Harbor County, USFWS NWI (2011), FEMA Preliminary DFIRM (2013), DNR, WSDOT, Ecology, NRCS NAIP

Shoreline jurisdiction boundaries depicted on this map are approximate. They have not been formally delineated or surveyed and are intended for planning purposes only. Additional site-specific evaluation may be needed to confirm/verify information shown on this map.

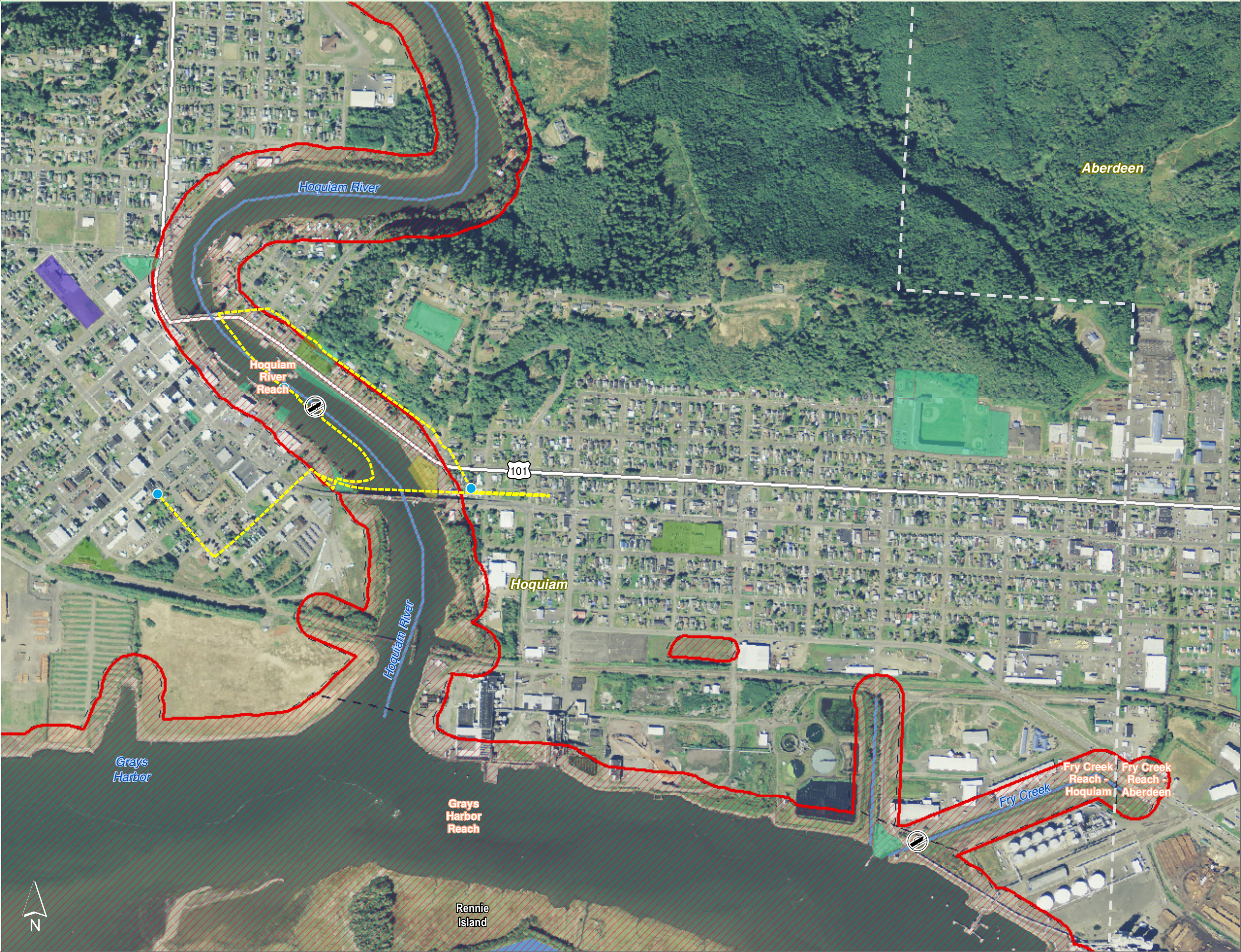









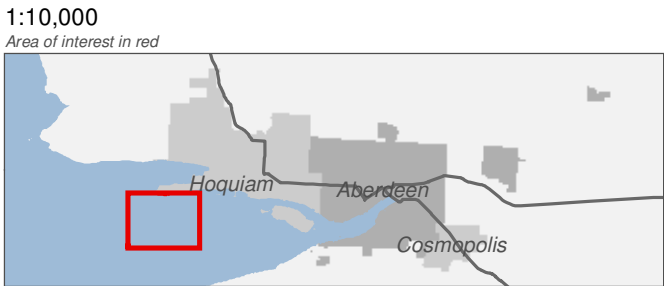


Figure 16.17: Hoquiam

Date: 10/2/2014

-  Preliminary Shoreline Jurisdiction
-  Reaches
-  City Boundary
-  SMA Rivers
-  SMA Lakes
-  Highways
- Public Access**
  -  Boat Launches

0 0.25 0.5 Miles



Source: Grays Harbor County, USFWS NWI (2011), FEMA Preliminary DFIRM (2013), DNR, WSDOT, Ecology, NRCS NAIP








Shoreline jurisdiction boundaries depicted on this map are approximate. They have not been formally delineated or surveyed and are intended for planning purposes only. Additional site-specific evaluation may be needed to confirm/verify information shown on this map.



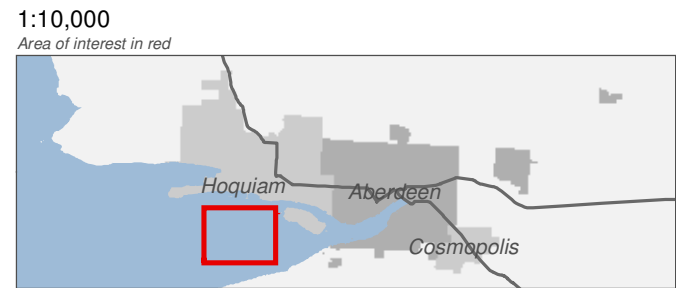


Figure 16.18: Hoquiam

Date: 10/2/2014

-  Preliminary Shoreline Jurisdiction
-  Reaches
-  City Boundary
-  SMA Rivers
-  SMA Lakes
-  Highways
- Public Access**
  -  Boat Launches

0 0.25 0.5 Miles



Source: Grays Harbor County, USFWS NWI (2011), FEMA Preliminary DFIRM (2013), DNR, WSDOT, Ecology, NRCS NAIP

Shoreline jurisdiction boundaries depicted on this map are approximate. They have not been formally delineated or surveyed and are intended for planning purposes only. Additional site-specific evaluation may be needed to confirm/verify information shown on this map.








# Public Access


Figure 16.19: Hoquiam


Date: 10/2/2014


-  Preliminary Shoreline Jurisdiction

 Reaches


 City Boundary

 SMA Rivers


 SMA Lakes

 Highways


**Public Access**

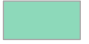
 Boat Launches

**Trail Locations**

 Bike/Ped

**Trail Routes**

 Bike and Pedestrian
- Parks and Recreation**

 Park

0 0.25 0.5 Miles



Source: Grays Harbor County, USFWS NWI (2011), FEMA Preliminary DFIRM (2013), DNR, WSDOT, Ecology, NRCS NAIP

Shoreline jurisdiction boundaries depicted on this map are approximate. They have not been formally delineated or surveyed and are intended for planning purposes only. Additional site-specific evaluation may be needed to confirm/verify information shown on this map.

