

# Soils

Figure 3.2: Aberdeen

Date: 10/2/2014

- Preliminary Shoreline Jurisdiction
- Reaches
- City Boundary
- SMA Rivers
- SMA Lakes
- Highways

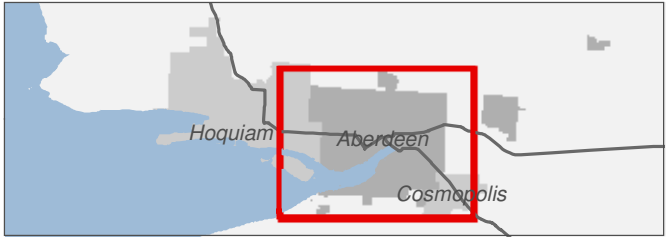
- Other Soils**

  - Calawah silt loam
  - Elochoman silt loam
  - Hoquiam silt loam
  - Ilwaco silt loam
  - Lytell silt loam
  - Montesa silt loam
  - Mopang silt loam
  - Narel silt loam
  - Skamo silt loam
  - Udorthents, level
  - Zenker silt loam
- Hydic Soils**

  - Aabab silt loam
  - Astoria silt loam
  - Elochoman silt loam
  - Fluvaquents, tidal
  - Lytell silt loam
  - Ocosta silty clay loam
  - Orcas peat
  - Pits, gravel
  - Rennie silty clay loam
  - Seastrand mucky peat
  - Water

0 0.25 0.5  
Miles

1:27,000  
Area of interest in red



Source: Grays Harbor County, USFWS NWI (2011), FEMA Preliminary DFIRM (2013), DNR, WSDOT, Ecology, NRCS NAIP

Shoreline jurisdiction boundaries depicted on this map are approximate. They have not been formally delineated or surveyed and are intended for planning purposes only. Additional site-specific evaluation may be needed to confirm/verify information shown on this map.

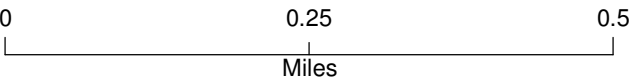
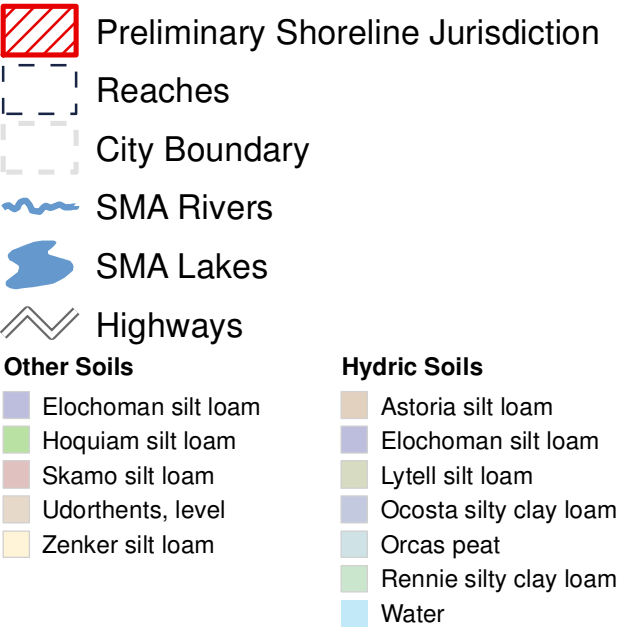




# Soils

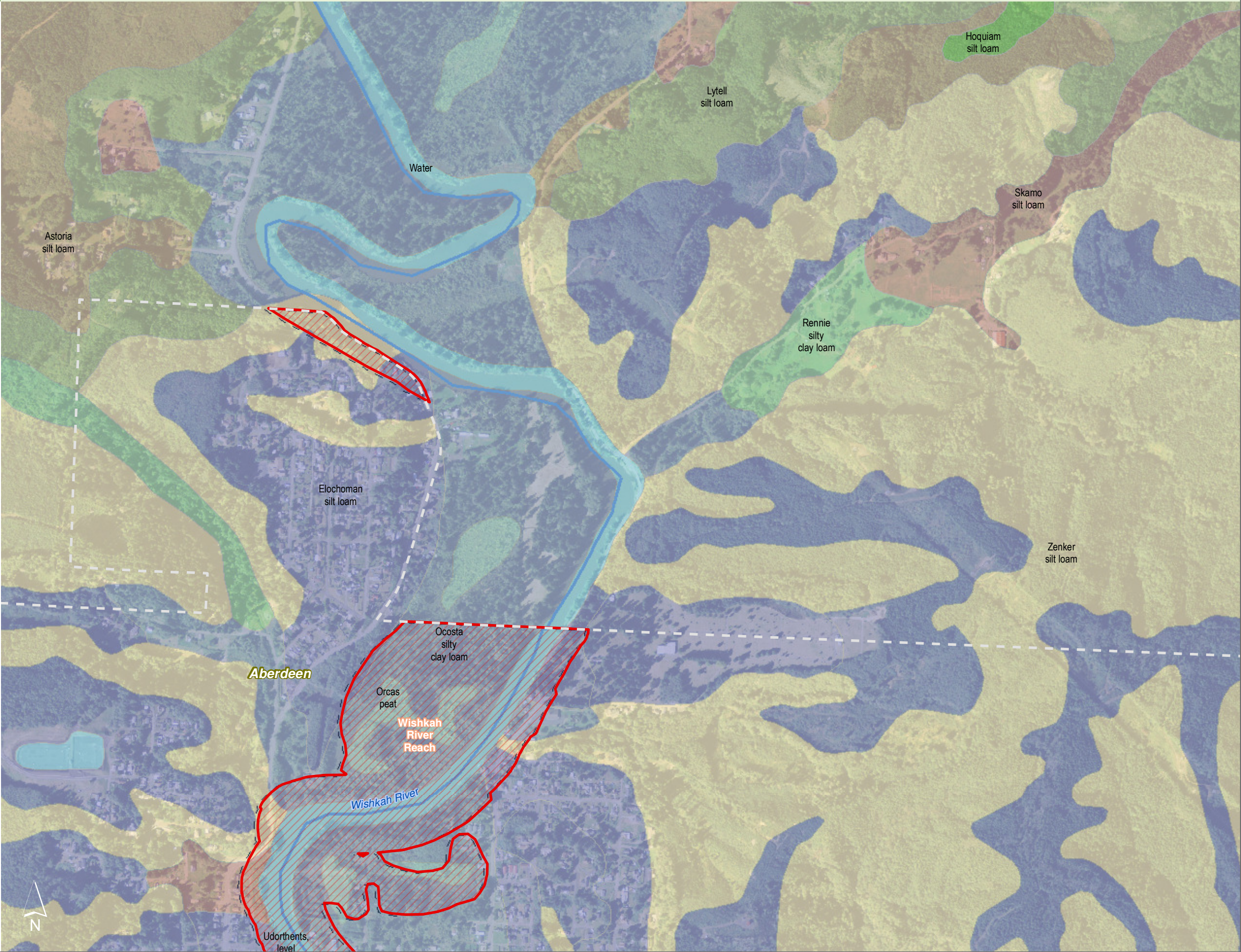
Figure 3.21: Aberdeen

Date: 10/2/2014



Source: Grays Harbor County, USFWS NWI (2011), FEMA Preliminary DFIRM (2013), DNR, WSDOT, Ecology, NRCS NAIP

Shoreline jurisdiction boundaries depicted on this map are approximate. They have not been formally delineated or surveyed and are intended for planning purposes only. Additional site-specific evaluation may be needed to confirm/verify information shown on this map.



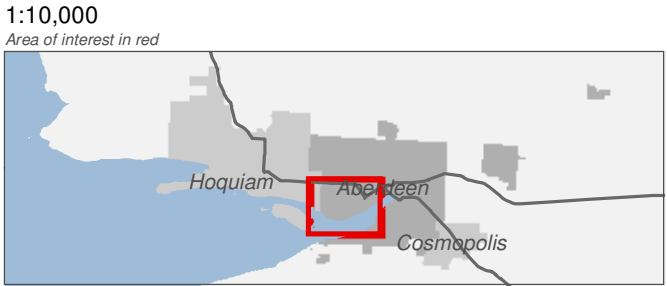
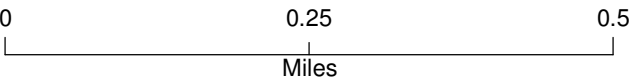


# Soils

Figure 3.22: Aberdeen

Date: 10/2/2014

- Preliminary Shoreline Jurisdiction
- Reaches
- City Boundary
- SMA Rivers
- SMA Lakes
- Highways
- Other Soils**
- Elochoman silt loam
- Skamo silt loam
- Udorthents, level
- Zenker silt loam
- Hydric Soils**
- Elochoman silt loam
- Fluvaquents, tidal
- Ocosta silty clay loam
- Water



Source: Grays Harbor County, USFWS NWI (2011), FEMA Preliminary DFIRM (2013), DNR, WSDOT, Ecology, NRCS NAIP

Shoreline jurisdiction boundaries depicted on this map are approximate. They have not been formally delineated or surveyed and are intended for planning purposes only. Additional site-specific evaluation may be needed to confirm/verify information shown on this map.








# Soils


Figure 3.23: Aberdeen


Date: 10/2/2014


-  Preliminary Shoreline Jurisdiction

 Reaches

 City Boundary

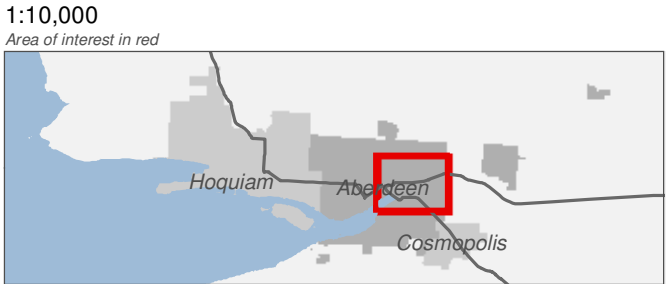
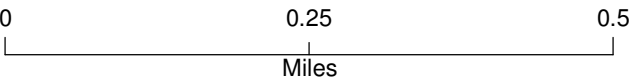
 SMA Rivers

 SMA Lakes

 Highways
- Other Soils**

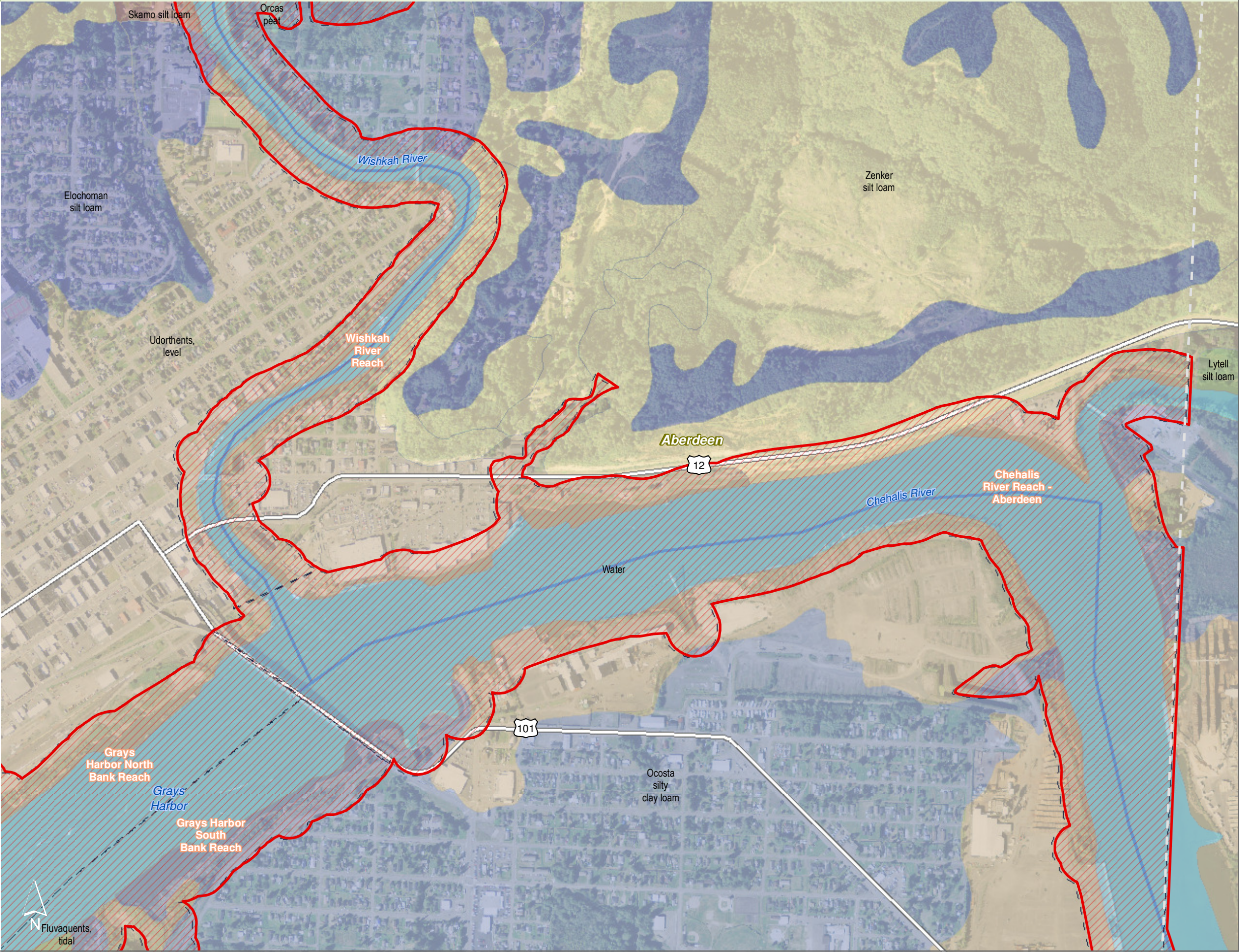
  - Elochoman silt loam
  - Skamo silt loam
  - Udorthents, level
  - Zenker silt loam
- Hydric Soils**

  - Elochoman silt loam
  - Fluvaquents, tidal
  - Lytell silt loam
  - Ocosta silty clay loam
  - Orcas peat
  - Water



Source: Grays Harbor County, USFWS NWI (2011), FEMA Preliminary DFIRM (2013), DNR, WSDOT, Ecology, NRCS NAIP

Shoreline jurisdiction boundaries depicted on this map are approximate. They have not been formally delineated or surveyed and are intended for planning purposes only. Additional site-specific evaluation may be needed to confirm/verify information shown on this map.



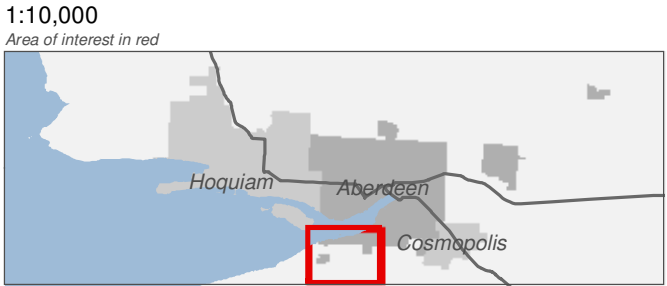
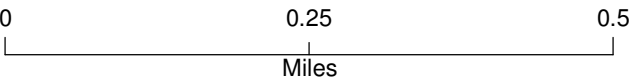


# Soils

Figure 3.24: Aberdeen

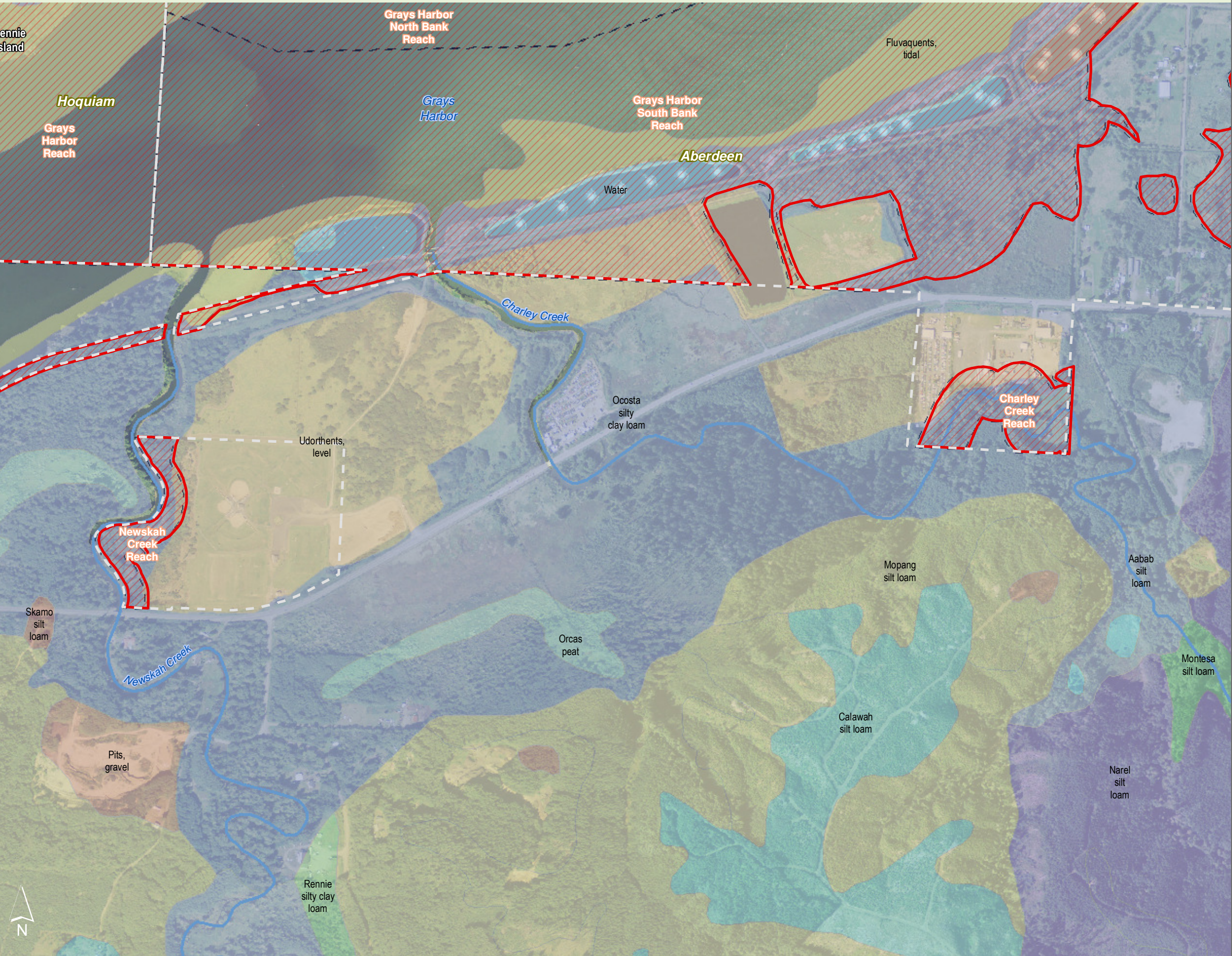
Date: 10/2/2014

- Preliminary Shoreline Jurisdiction
- Reaches
- City Boundary
- SMA Rivers
- SMA Lakes
- Highways
- Calawah silt loam
- Montesa silt loam
- Mopang silt loam
- Narel silt loam
- Skamo silt loam
- Udorthents, level
- Aabab silt loam
- Fluvaquents, tidal
- Ocosta silty clay loam
- Orcas peat
- Pits, gravel
- Rennie silty clay loam
- Water



Source: Grays Harbor County, USFWS NWI (2011), FEMA Preliminary DFIRM (2013), DNR, WSDOT, Ecology, NRCS NAIP

Shoreline jurisdiction boundaries depicted on this map are approximate. They have not been formally delineated or surveyed and are intended for planning purposes only. Additional site-specific evaluation may be needed to confirm/verify information shown on this map.





# Soils

Figure 3.25: Aberdeen

Date: 10/2/2014

Preliminary Shoreline Jurisdiction

Reaches

City Boundary

SMA Rivers

SMA Lakes

Highways

Other Soils

Calawah silt loam

Ilwaco silt loam

Montesa silt loam

Mopang silt loam

Narel silt loam

Udorthents, level

Hydric Soils

Aabab silt loam

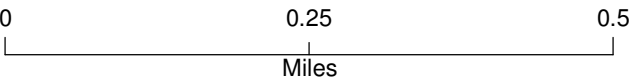
Fluvaquents, tidal

Ocosta silty clay loam

Pits, gravel

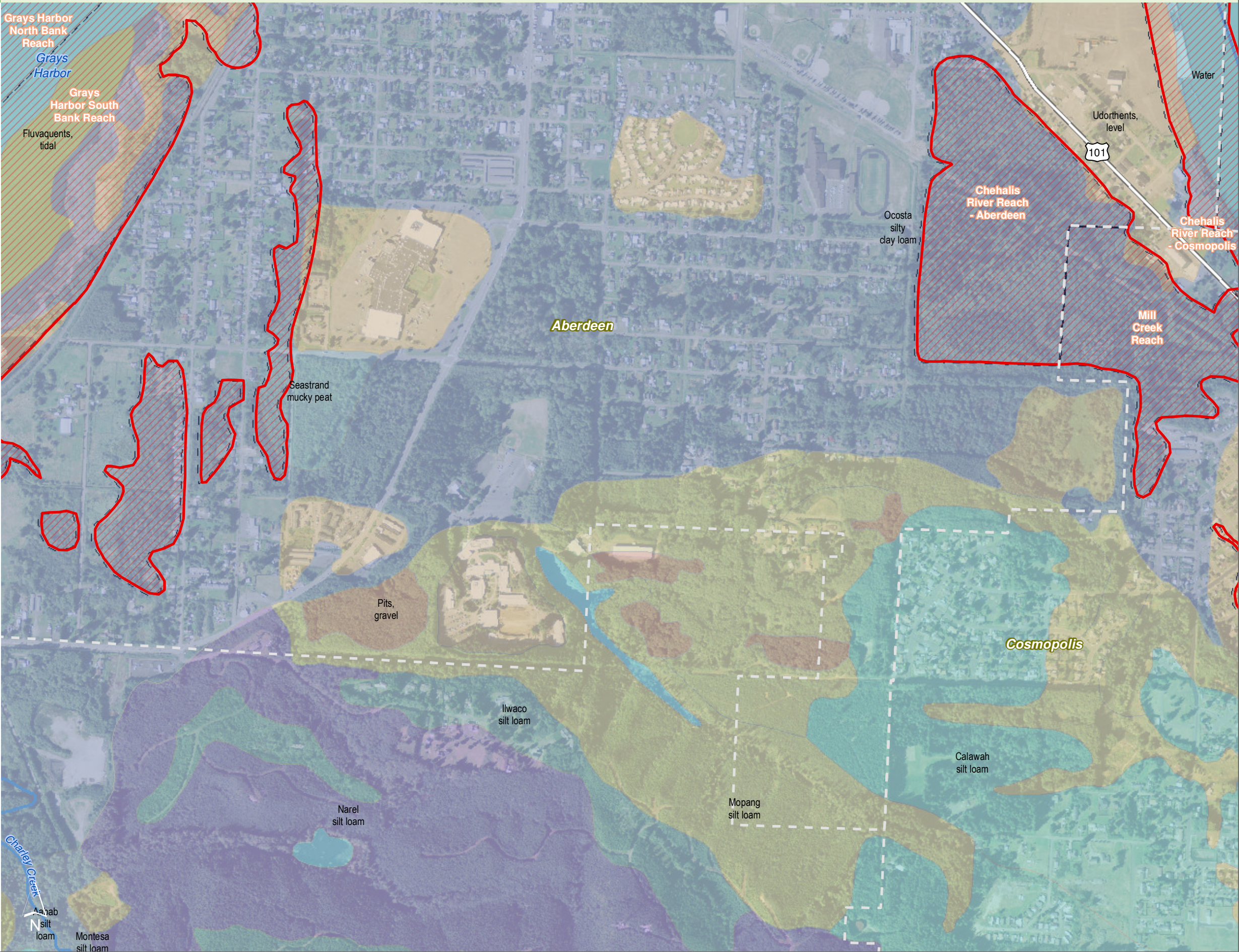
Seastrand mucky peat

Water



Source: Grays Harbor County, USFWS NWI (2011), FEMA Preliminary DFIRM (2013), DNR, WSDOT, Ecology, NRCS NAIP

Shoreline jurisdiction boundaries depicted on this map are approximate. They have not been formally delineated or surveyed and are intended for planning purposes only. Additional site-specific evaluation may be needed to confirm/verify information shown on this map.











# Soils

Figure 3.3: Aberdeen

Date: 10/2/2014

-  Preliminary Shoreline Jurisdiction
-  Reaches
-  City Boundary
-  SMA Rivers
-  SMA Lakes
-  Highways

**Other Soils**

- Copalis silt loam
- Elochoman silt loam
- Hoquiam silt loam
- Juno sandy loam
- Le Bar silt loam
- Lyre very gravelly loamy sand
- Lytell silt loam
- Skamo silt loam
- Udorthents, level
- Zenker silt loam

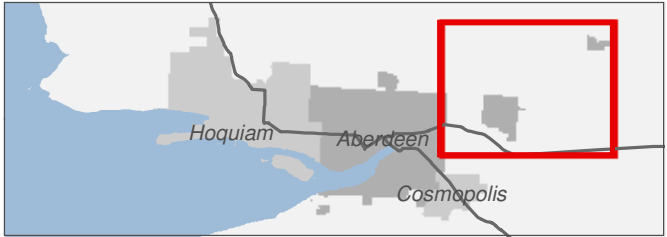
**Hydric Soils**

- Astoria silt loam
- Chehalis silt loam
- Copalis silt loam
- Elochoman silt loam
- Grehalem silt loam
- Lytell silt loam
- Nemah silty clay loam
- Ocosta silty clay loam
- Orcas peat
- Pits, gravel
- Rennie silty clay loam
- Riverwash
- Salzer silty clay
- Wishkah silty clay loam
- Water

0 0.25 0.5  
Miles

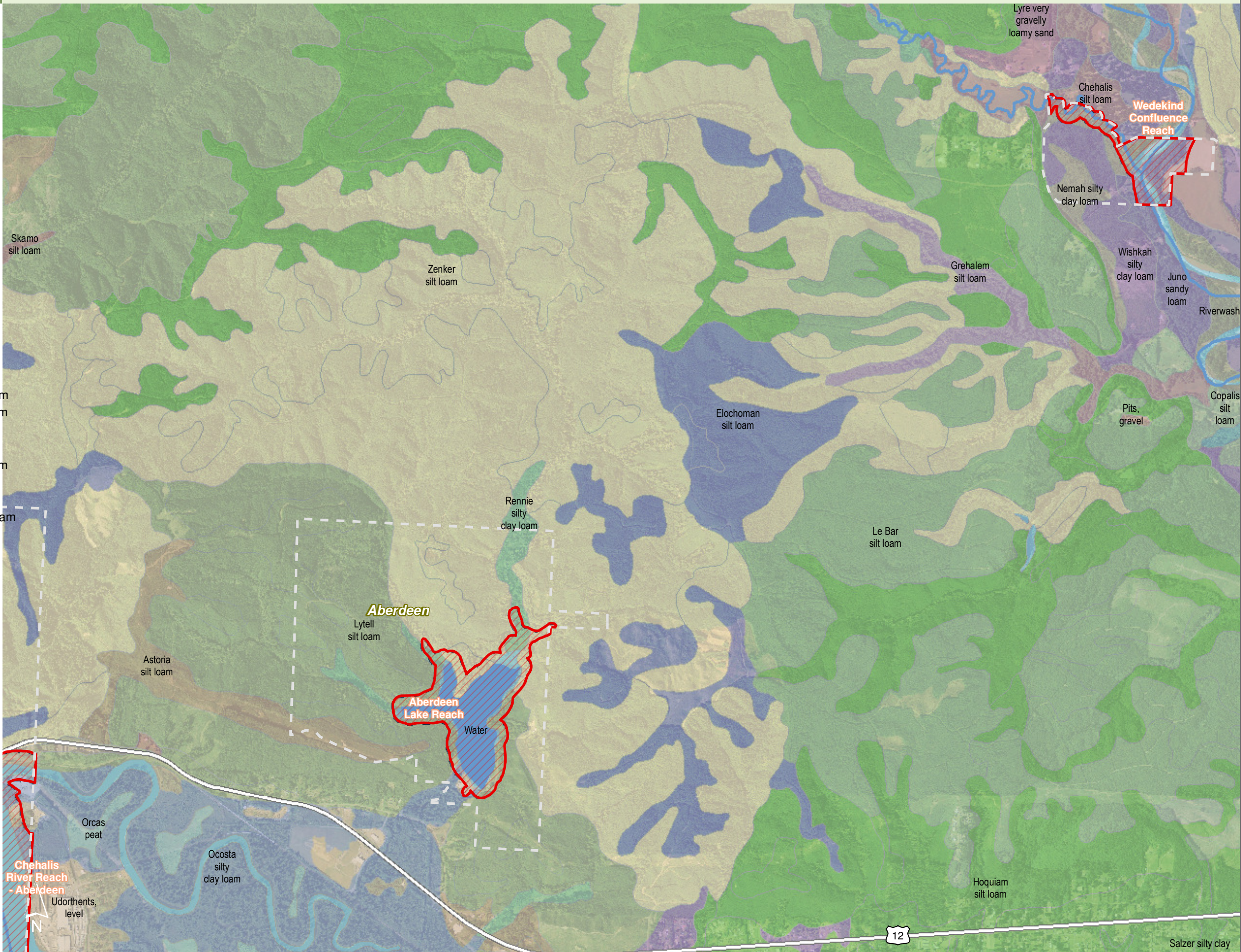
1:24,000

Area of interest in red



Source: Grays Harbor County, USFWS NWI (2011), FEMA Preliminary DFIRM (2013), DNR, WSDOT, Ecology, NRCS NAIP

Shoreline jurisdiction boundaries depicted on this map are approximate. They have not been formally delineated or surveyed and are intended for planning purposes only. Additional site-specific evaluation may be needed to confirm/verify information shown on this map.

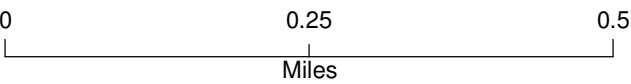
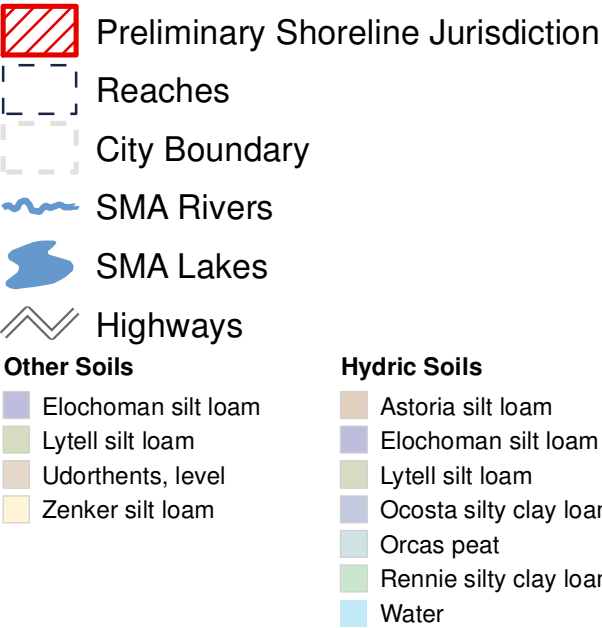




# Soils

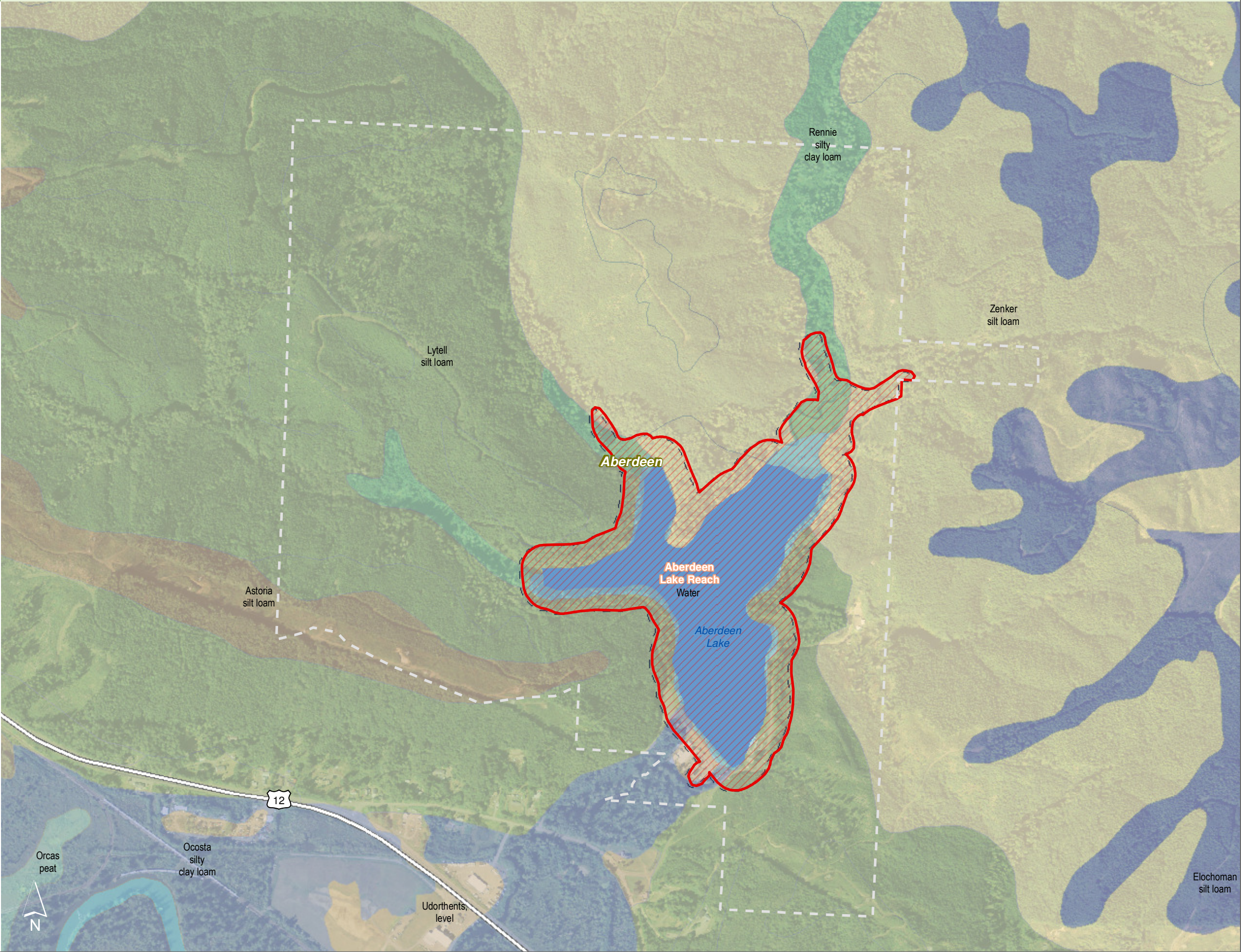
Figure 3.31: Aberdeen

Date: 10/2/2014



Source: Grays Harbor County, USFWS NWI (2011), FEMA Preliminary DFIRM (2013), DNR, WSDOT, Ecology, NRCS NAIP

Shoreline jurisdiction boundaries depicted on this map are approximate. They have not been formally delineated or surveyed and are intended for planning purposes only. Additional site-specific evaluation may be needed to confirm/verify information shown on this map.





# Soils

Figure 3.32: Aberdeen

Date: 10/2/2014

Preliminary Shoreline Jurisdiction

Reaches

City Boundary

SMA Rivers

SMA Lakes

Highways

Other Soils

Elochoman silt loam

Hoquiam silt loam

Juno sandy loam

Le Bar silt loam

Lyre very gravelly loamy sand

Zenker silt loam

Hydric Soils

Chehalis silt loam

Copalis silt loam

Elochoman silt loam

Grehalem silt loam

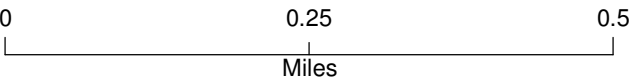
Nemah silty clay loam

Rennie silty clay loam

Riverwash

Wishkah silty clay loam

Water



Source: Grays Harbor County, USFWS NWI (2011), FEMA Preliminary DFIRM (2013), DNR, WSDOT, Ecology, NRCS NAIP

Shoreline jurisdiction boundaries depicted on this map are approximate. They have not been formally delineated or surveyed and are intended for planning purposes only. Additional site-specific evaluation may be needed to confirm/verify information shown on this map.

