

# Water Quality 303(d) Listed Waterbodies

Figure 6.2: Aberdeen

Date: 10/2/2014

- Preliminary Shoreline Jurisdiction
- Reaches
- City Boundary
- SMA Rivers
- SMA Lakes
- Highway

303d Waterbodies by Category

1	4A	4C
2	4B	5

- 303d Categories:
- Category 1: Meets tested standards
  - Category 2: Waters of concern
  - Category 4: Polluted waters that do not require a TMDL
    - 4a: Approved TMDL control plan in place
    - 4b: Approved pollution control plan in place
    - 4c: Cause cannot be addressed through TMDL
  - Category 5: Polluted waters that require a TMDL

0 0.25 0.5 Miles

1:27,000

Area of interest in red



Source: Grays Harbor County, USFWS NWI (2011), FEMA Preliminary DFIRM (2013), DNR, WSDOT, Ecology, NRCS NAIP

Shoreline jurisdiction boundaries depicted on this map are approximate. They have not been formally delineated or surveyed and are intended for planning purposes only. Additional site-specific evaluation may be needed to confirm/verify information shown on this map.

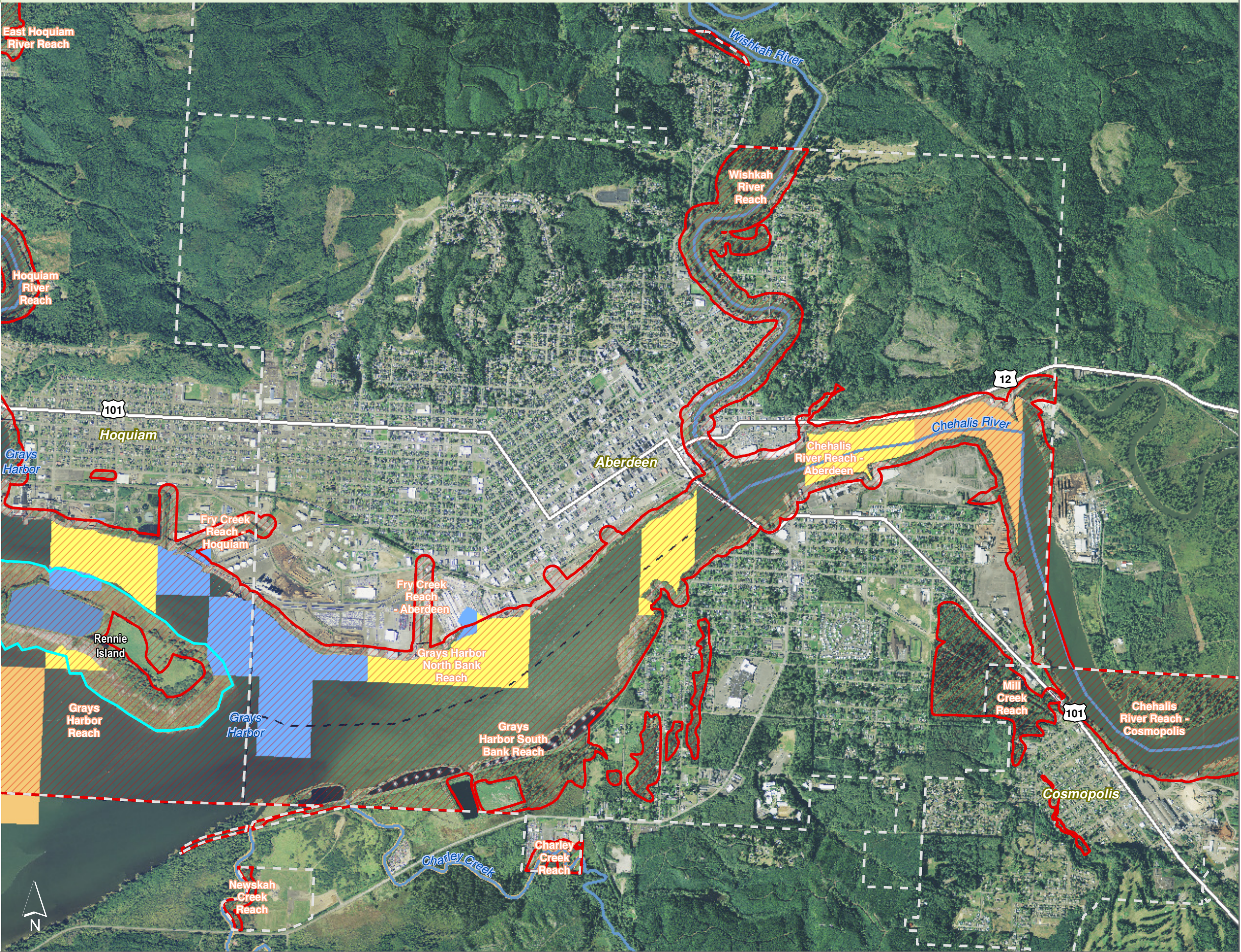








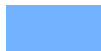







Figure 6.21: Aberdeen

Date: 10/2/2014

-  Preliminary Shoreline Jurisdiction
-  Reaches
-  City Boundary
-  SMA Rivers
-  SMA Lakes
-  Highway

303d Waterbodies by Category

- |  |  |  |
|--|--|--|
|  1 |  4A |  4C |
|  2 |  4B |  5  |

- 303d Categories:**  
**Category 1:** Meets tested standards  
**Category 2:** Waters of concern  
**Category 4:** Polluted waters that do not require a TMDL  
    **4a:** Approved TMDL control plan in place  
    **4b:** Approved pollution control plan in place  
    **4c:** Cause cannot be addressed through TMDL  
**Category 5:** Polluted waters that require a TMDL

0 0.25 0.5 Miles

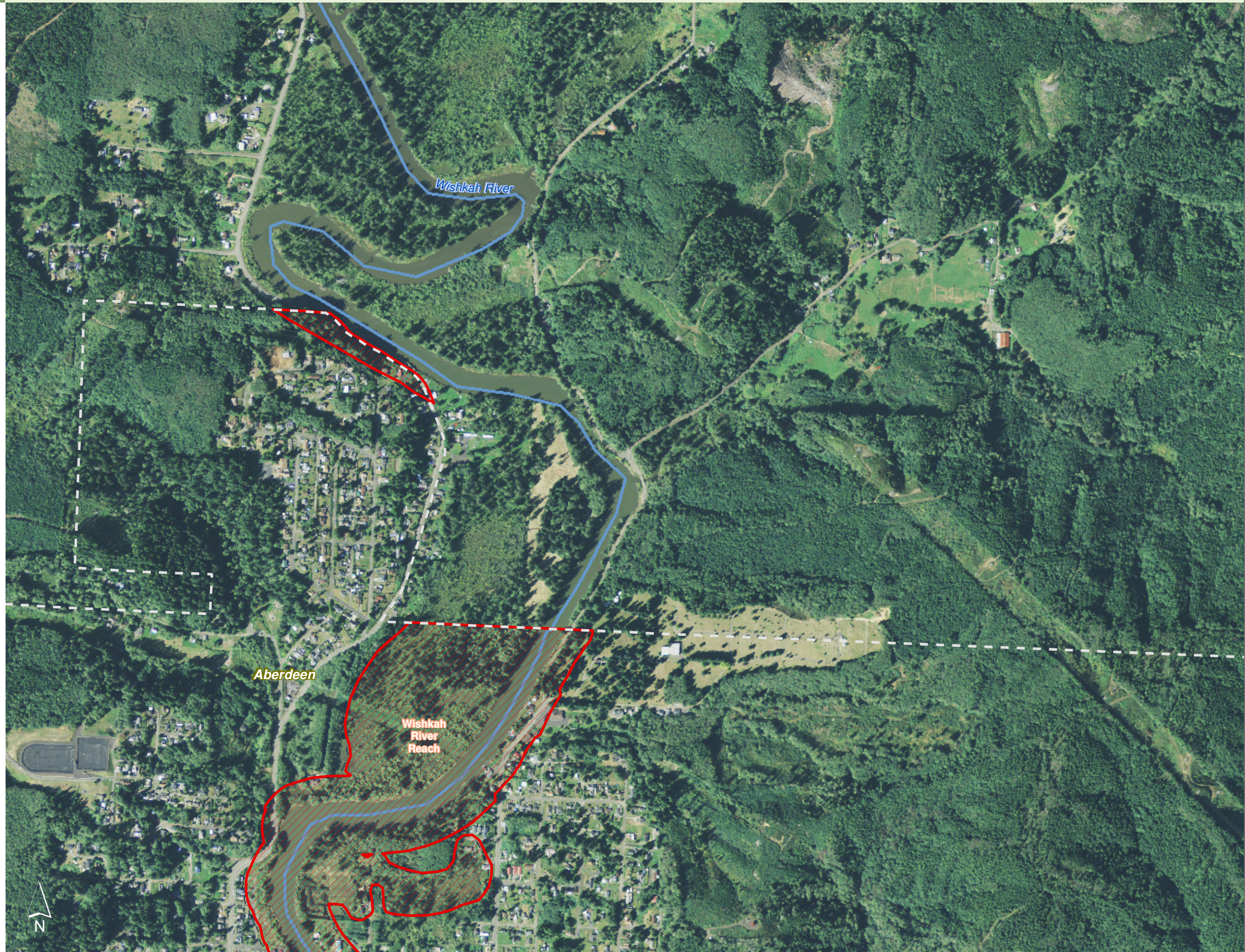
1:10,000

Area of interest in red



Source: Grays Harbor County, USFWS NWI (2011), FEMA Preliminary DFIRM (2013), DNR, WSDOT, Ecology, NRCS NAIP

Shoreline jurisdiction boundaries depicted on this map are approximate. They have not been formally delineated or surveyed and are intended for planning purposes only. Additional site-specific evaluation may be needed to confirm/verify information shown on this map.











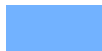




# Water Quality 303(d) Listed Waterbodies

Figure 6.22: Aberdeen

Date: 10/2/2014

-  Preliminary Shoreline Jurisdiction
-  Reaches
-  City Boundary
-  SMA Rivers
-  SMA Lakes
-  Highway

303d Waterbodies by Category

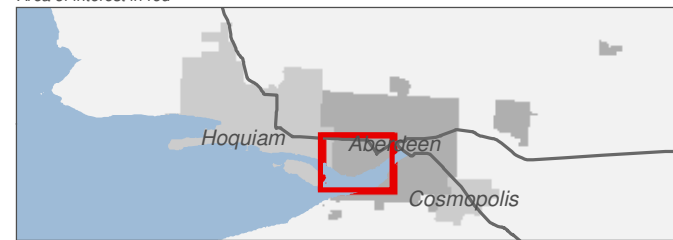
	1		4A		4C
	2		4B		5

- 303d Categories:
- Category 1: Meets tested standards
  - Category 2: Waters of concern
  - Category 4: Polluted waters that do not require a TMDL
    - 4a: Approved TMDL control plan in place
    - 4b: Approved pollution control plan in place
    - 4c: Cause cannot be addressed through TMDL
  - Category 5: Polluted waters that require a TMDL

0 0.25 0.5 Miles

1:10,000

Area of interest in red



Source: Grays Harbor County, USFWS NWI (2011), FEMA Preliminary DFIRM (2013), DNR, WSDOT, Ecology, NRCS NAIP

Shoreline jurisdiction boundaries depicted on this map are approximate. They have not been formally delineated or surveyed and are intended for planning purposes only. Additional site-specific evaluation may be needed to confirm/verify information shown on this map.





# Water Quality 303(d) Listed Waterbodies

Figure 6.23: Aberdeen

Date: 10/2/2014

- Preliminary Shoreline Jurisdiction
- Reaches
- City Boundary
- SMA Rivers
- SMA Lakes
- Highway

303d Waterbodies by Category

1	4A	4C
2	4B	5

- 303d Categories:**  
**Category 1:** Meets tested standards  
**Category 2:** Waters of concern  
**Category 4:** Polluted waters that do not require a TMDL  
    **4a:** Approved TMDL control plan in place  
    **4b:** Approved pollution control plan in place  
    **4c:** Cause cannot be addressed through TMDL  
**Category 5:** Polluted waters that require a TMDL

0 0.25 0.5 Miles

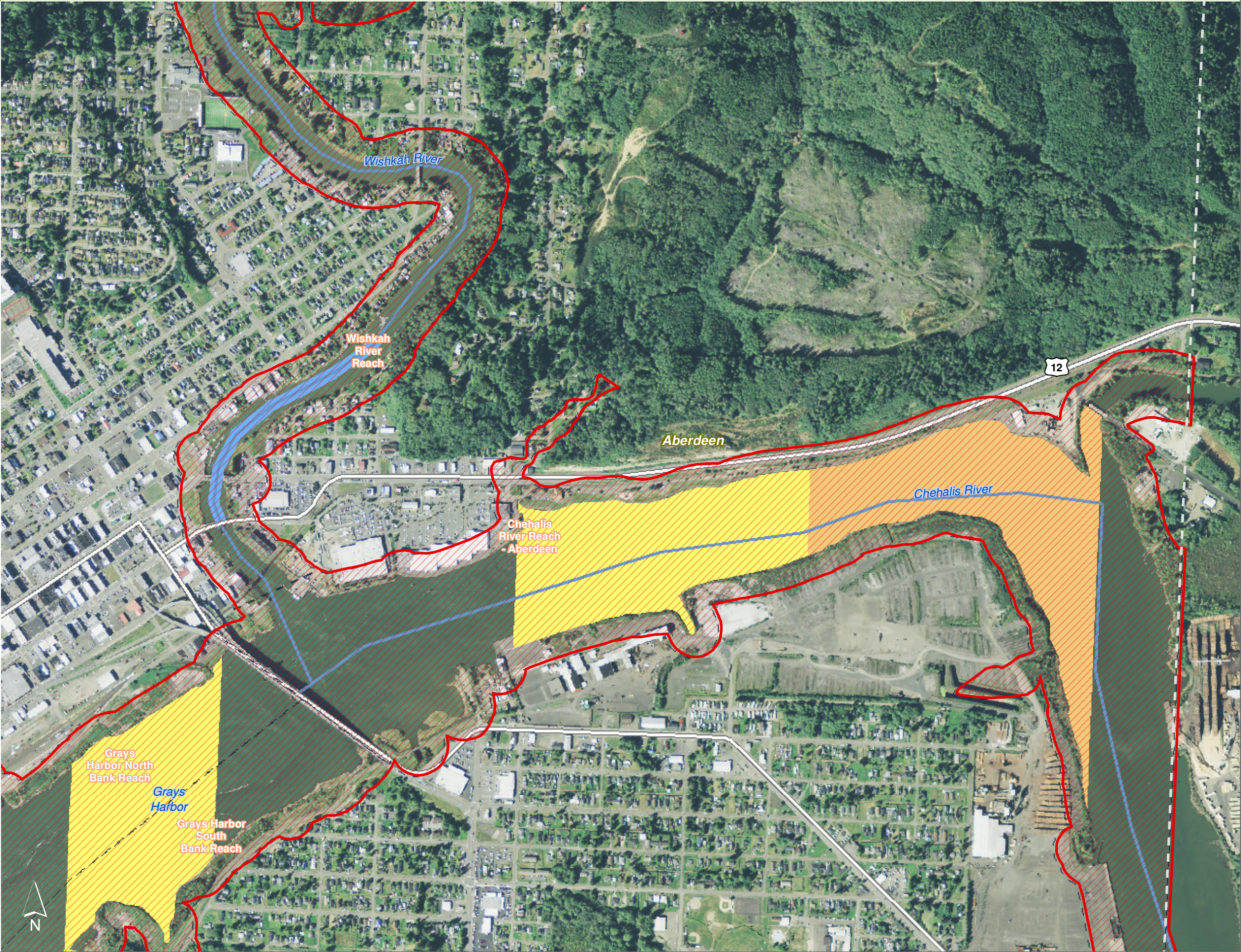
1:10,000

Area of interest in red



Source: Grays Harbor County, USFWS NWI (2011), FEMA Preliminary DFIRM (2013), DNR, WSDOT, Ecology, NRCS NAIP

Shoreline jurisdiction boundaries depicted on this map are approximate. They have not been formally delineated or surveyed and are intended for planning purposes only. Additional site-specific evaluation may be needed to confirm/verify information shown on this map.





# Water Quality 303(d) Listed Waterbodies

Figure 6.24: Aberdeen

Date: 10/2/2014

- Preliminary Shoreline Jurisdiction
- Reaches
- City Boundary
- SMA Rivers
- SMA Lakes
- Highway

303d Waterbodies by Category

- |   |    |    |
|---|----|----|
| 1 | 4A | 4C |
| 2 | 4B | 5  |

- 303d Categories:
- Category 1: Meets tested standards
  - Category 2: Waters of concern
  - Category 4: Polluted waters that do not require a TMDL
    - 4a: Approved TMDL control plan in place
    - 4b: Approved pollution control plan in place
    - 4c: Cause cannot be addressed through TMDL
  - Category 5: Polluted waters that require a TMDL

0 0.25 0.5 Miles



Source: Grays Harbor County, USFWS NWI (2011), FEMA Preliminary DFIRM (2013), DNR, WSDOT, Ecology, NRCS NAIP

Shoreline jurisdiction boundaries depicted on this map are approximate. They have not been formally delineated or surveyed and are intended for planning purposes only. Additional site-specific evaluation may be needed to confirm/verify information shown on this map.





# Water Quality 303(d) Listed Waterbodies

Figure 6.25: Aberdeen

Date: 10/2/2014

- Preliminary Shoreline Jurisdiction
- Reaches
- City Boundary
- SMA Rivers
- SMA Lakes
- Highway

303d Waterbodies by Category

	1		4A		4C
	2		4B		5

- 303d Categories:
- Category 1: Meets tested standards
  - Category 2: Waters of concern
  - Category 4: Polluted waters that do not require a TMDL
    - 4a: Approved TMDL control plan in place
    - 4b: Approved pollution control plan in place
    - 4c: Cause cannot be addressed through TMDL
  - Category 5: Polluted waters that require a TMDL

0 0.25 0.5 Miles



Source: Grays Harbor County, USFWS NWI (2011), FEMA Preliminary DFIRM (2013), DNR, WSDOT, Ecology, NRCS NAIP

Shoreline jurisdiction boundaries depicted on this map are approximate. They have not been formally delineated or surveyed and are intended for planning purposes only. Additional site-specific evaluation may be needed to confirm/verify information shown on this map.

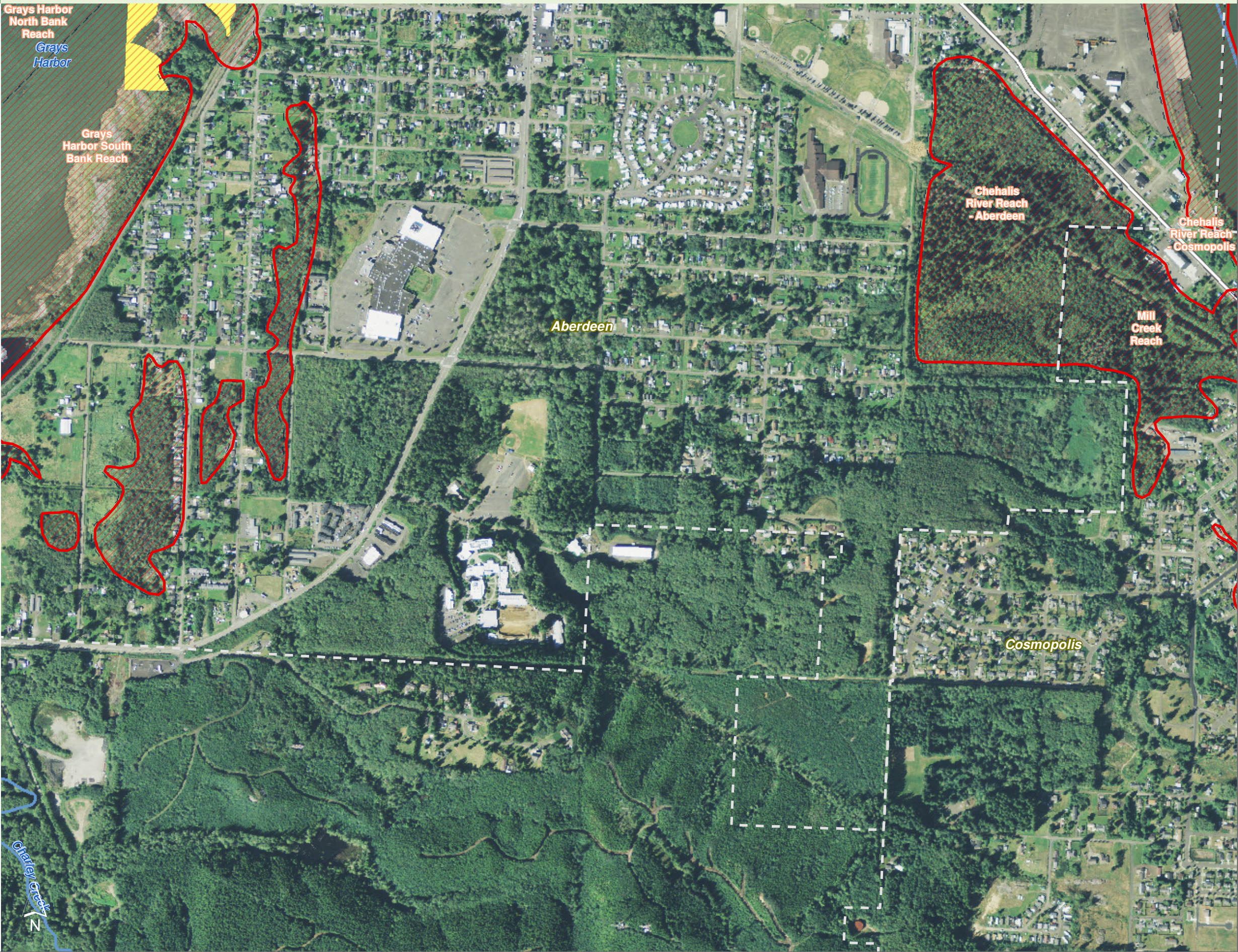








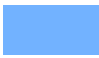







Figure 6.3: Aberdeen

Date: 10/2/2014

-  Preliminary Shoreline Jurisdiction
-  Reaches
-  City Boundary
-  SMA Rivers
-  SMA Lakes
-  Highway

303d Waterbodies by Category

- |  |  |  |
|--|--|--|
|  1 |  4A |  4C |
|  2 |  4B |  5  |

303d Categories:

Category 1: Meets tested standards

Category 2: Waters of concern

Category 4: Polluted waters that do not require a TMDL

4a: Approved TMDL control plan in place

4b: Approved pollution control plan in place

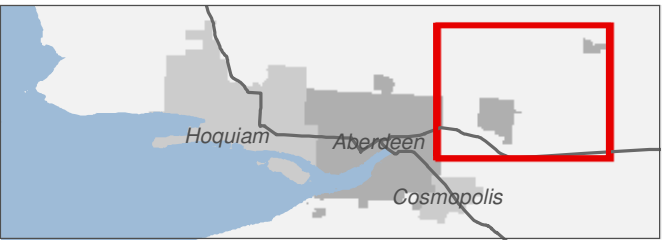
4c: Cause cannot be addressed through TMDL

Category 5: Polluted waters that require a TMDL

0 0.25 0.5 Miles

1:24,000

Area of interest in red



Source: Grays Harbor County, USFWS NWI (2011), FEMA Preliminary DFIRM (2013), DNR, WSDOT, Ecology, NRCS NAIP

Shoreline jurisdiction boundaries depicted on this map are approximate. They have not been formally delineated or surveyed and are intended for planning purposes only. Additional site-specific evaluation may be needed to confirm/verify information shown on this map.

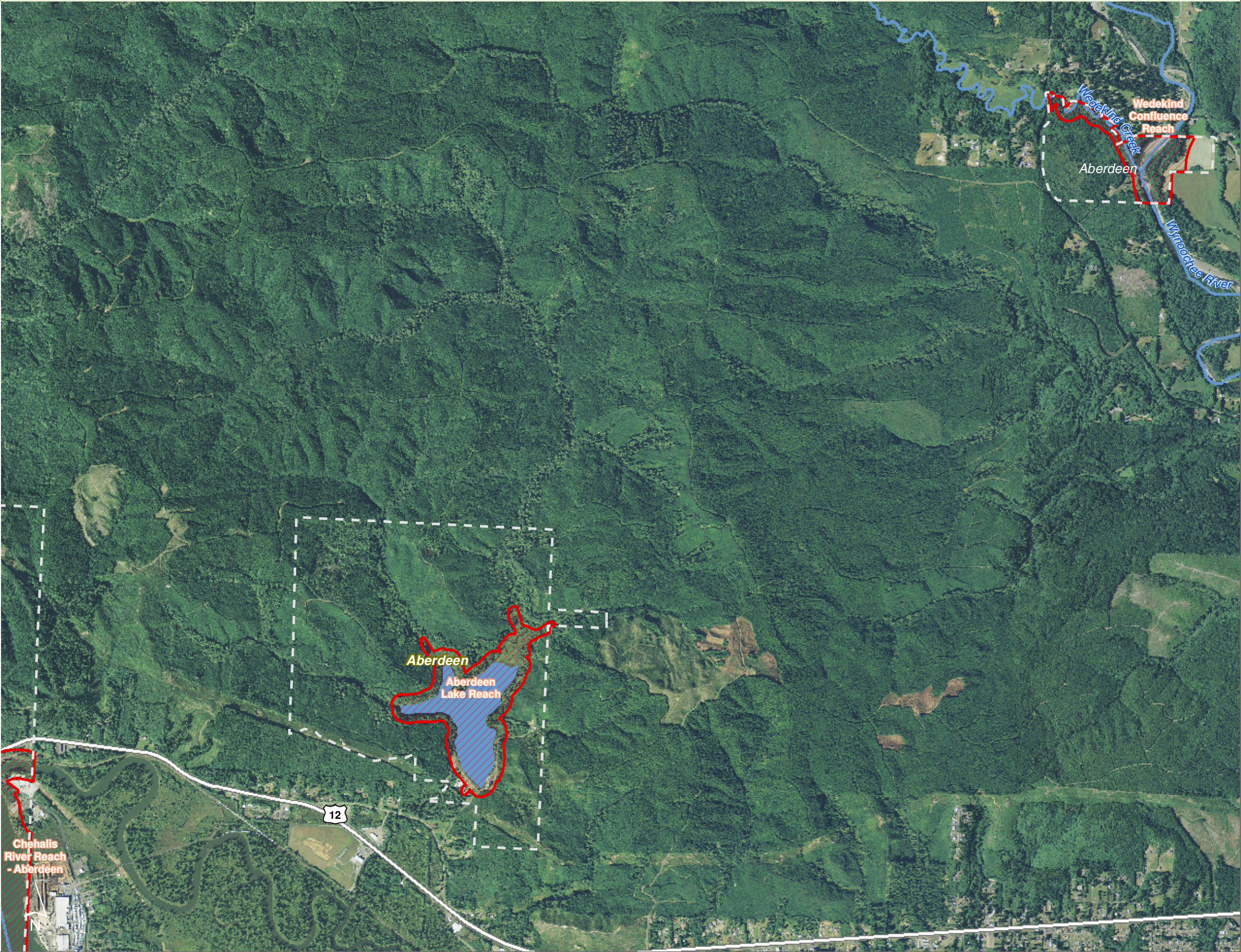








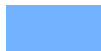







Figure 6.31: Aberdeen

Date: 10/2/2014

-  Preliminary Shoreline Jurisdiction
-  Reaches
-  City Boundary
-  SMA Rivers
-  SMA Lakes
-  Highway

303d Waterbodies by Category

- |  |  |  |
|--|--|--|
|  1 |  4A |  4C |
|  2 |  4B |  5  |

- 303d Categories:**  
**Category 1:** Meets tested standards  
**Category 2:** Waters of concern  
**Category 4:** Polluted waters that do not require a TMDL  
    **4a:** Approved TMDL control plan in place  
    **4b:** Approved pollution control plan in place  
    **4c:** Cause cannot be addressed through TMDL  
**Category 5:** Polluted waters that require a TMDL

0 0.25 0.5 Miles

1:10,000

Area of interest in red



Source: Grays Harbor County, USFWS NWI (2011), FEMA Preliminary DFIRM (2013), DNR, WSDOT, Ecology, NRCS NAIP

Shoreline jurisdiction boundaries depicted on this map are approximate. They have not been formally delineated or surveyed and are intended for planning purposes only. Additional site-specific evaluation may be needed to confirm/verify information shown on this map.

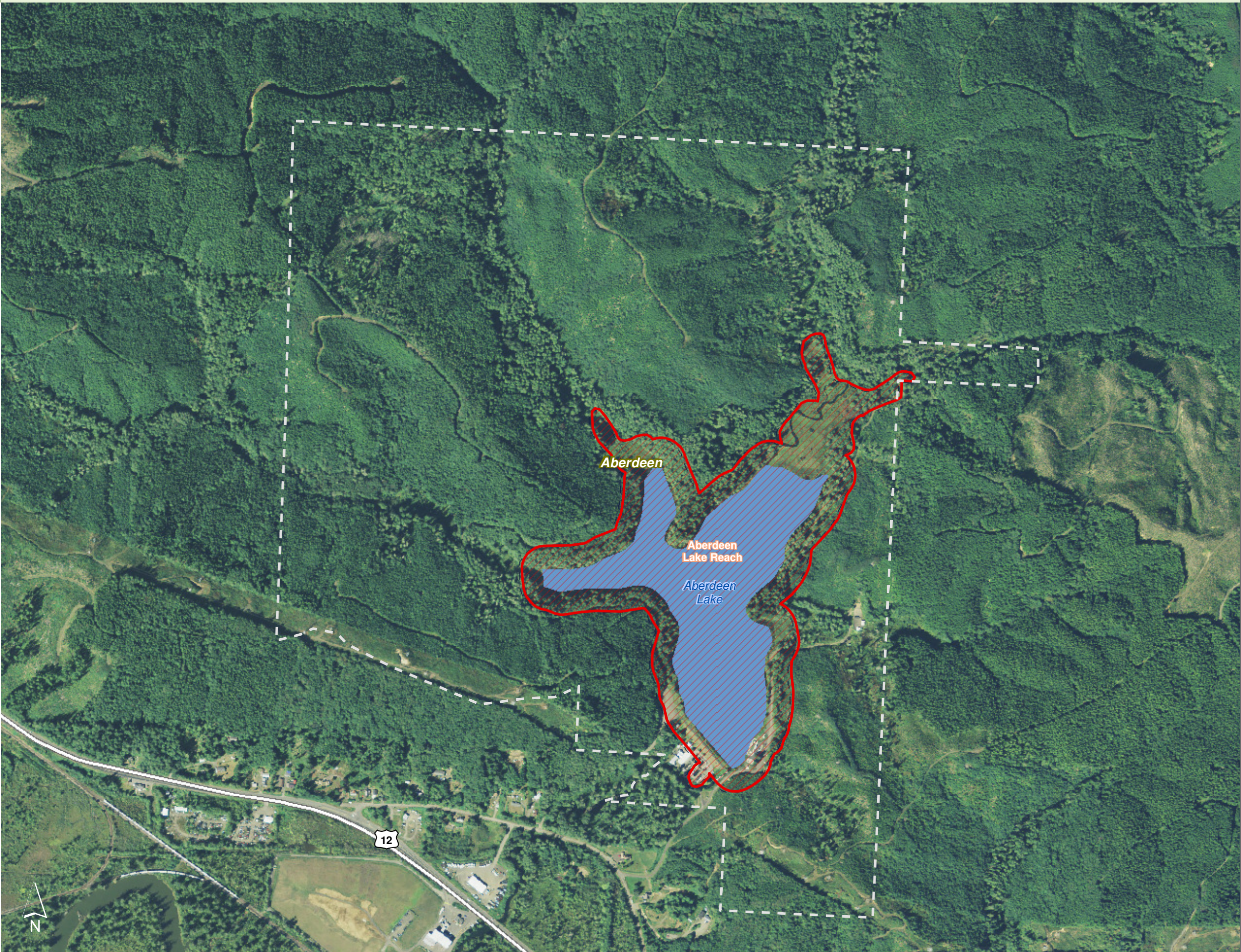








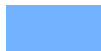







Figure 6.32: Aberdeen

Date: 10/2/2014

-  Preliminary Shoreline Jurisdiction
-  Reaches
-  City Boundary
-  SMA Rivers
-  SMA Lakes
-  Highway

303d Waterbodies by Category

- |  |   |   |    |   |    |
|--|---|---|----|---|----|
|  | 1 |  | 4A |  | 4C |
|  | 2 |  | 4B |  | 5  |

- 303d Categories:**
- Category 1:** Meets tested standards
  - Category 2:** Waters of concern
  - Category 4:** Polluted waters that do not require a TMDL
    - 4a:** Approved TMDL control plan in place
    - 4b:** Approved pollution control plan in place
    - 4c:** Cause cannot be addressed through TMDL
  - Category 5:** Polluted waters that require a TMDL

0 0.25 0.5 Miles

1:10,000

Area of interest in red



Source: Grays Harbor County, USFWS NWI (2011), FEMA Preliminary DFIRM (2013), DNR, WSDOT, Ecology, NRCS NAIP

Shoreline jurisdiction boundaries depicted on this map are approximate. They have not been formally delineated or surveyed and are intended for planning purposes only. Additional site-specific evaluation may be needed to confirm/verify information shown on this map.

