

Surface Water System

Figure 7.2: Aberdeen

Date: 10/2/2014

- Preliminary Shoreline Jurisdiction
- Reaches
- City Boundary
- SMA Lakes
- SMA Rivers
- Highways

Road Crossing - Blockage Type

- N/A
- None
- Partial
- Total
- Unknown

Tide Gates

- City of Aberdeen
- City of Hoquiam
- Tide Gate per WDFW

0 0.25 0.5 Miles

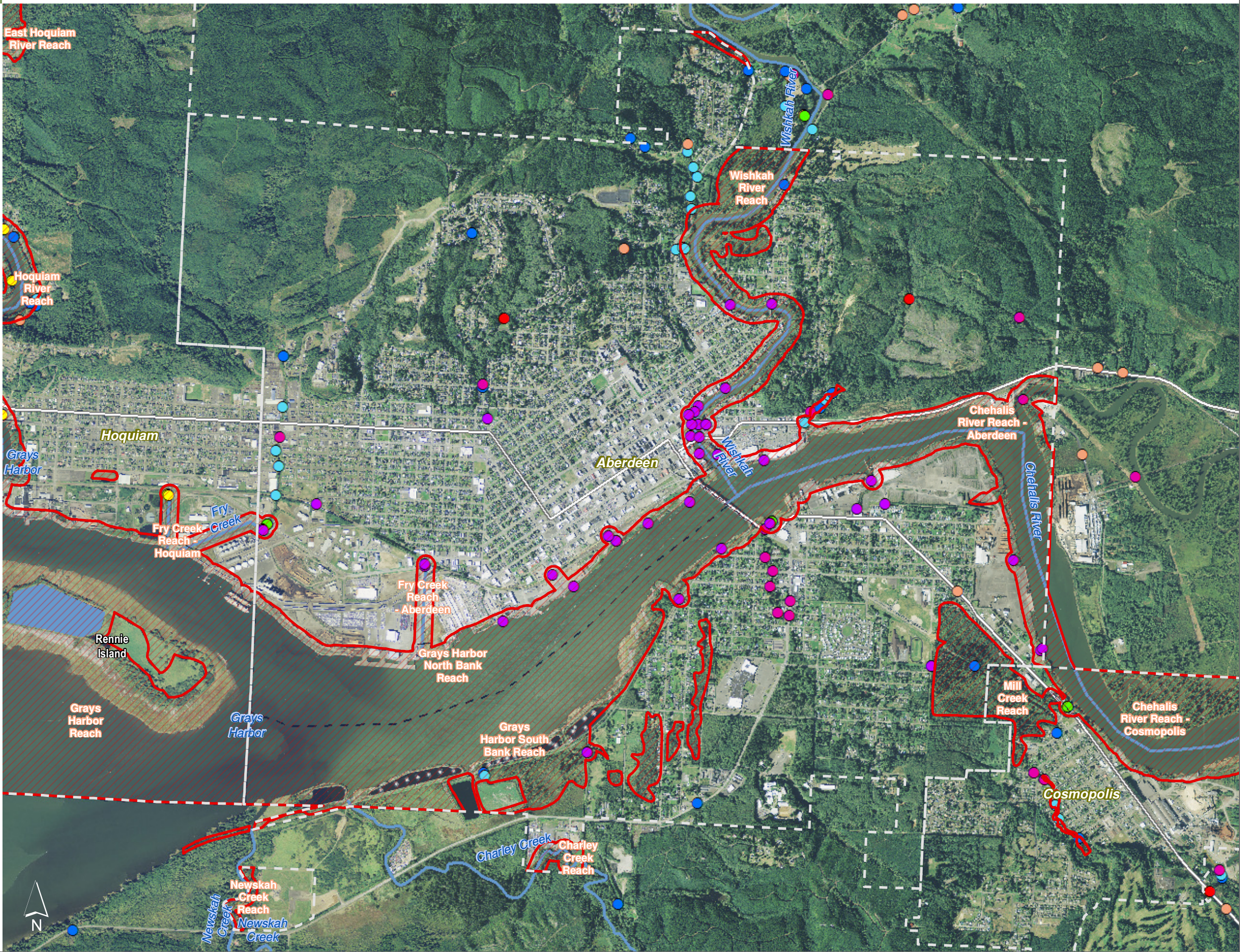
1:27,000

Area of interest in red



Source: Grays Harbor County, USFWS NWI, FEMA, WA DNR, WSDOT, DOE, NRCS NAIP

Shoreline jurisdiction boundaries depicted on this map are approximate. They have not been formally delineated or surveyed and are intended for planning purposes only. Additional site-specific evaluation may be needed to confirm/verify information shown on this map.



Surface Water System

Figure 7.21: Aberdeen

Date: 10/2/2014

- Preliminary Shoreline Jurisdiction
- Reaches
- City Boundary
- SMA Lakes
- SMA Rivers
- Highways

Road Crossing - Blockage Type

- N/A
- None
- Partial
- Total
- Unknown

Tide Gates

- City of Aberdeen
- City of Hoquiam
- Tide Gate per WDFW

0 0.25 0.5 Miles

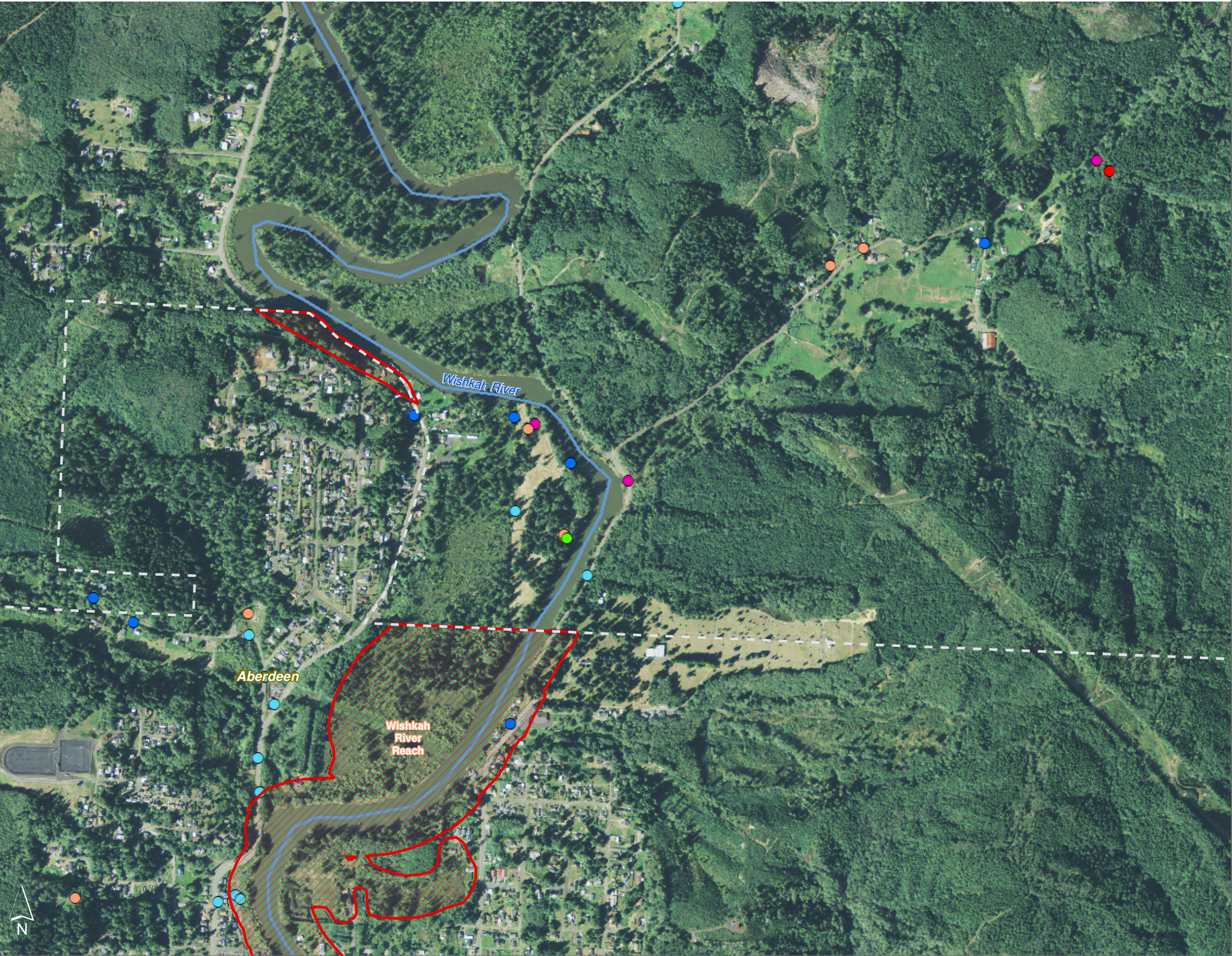
1:10,000

Area of interest in red



Source: Grays Harbor County, USFWS NWI, FEMA, WA DNR, WSDOT, DOE, NRCS NAIP

Shoreline jurisdiction boundaries depicted on this map are approximate. They have not been formally delineated or surveyed and are intended for planning purposes only. Additional site-specific evaluation may be needed to confirm/verify information shown on this map.



Surface Water System

Figure 7.22: Aberdeen

Date: 10/2/2014

- Preliminary Shoreline Jurisdiction
- Reaches
- City Boundary
- SMA Lakes
- SMA Rivers
- Highways

Road Crossing - Blockage Type

- N/A
- None
- Partial
- Total
- Unknown

Tide Gates

- City of Aberdeen
- City of Hoquiam
- Tide Gate per WDFW

0 0.25 0.5 Miles

1:10,000

Area of interest in red



Source: Grays Harbor County, USFWS NWI, FEMA, WA DNR, WSDOT, DOE, NRCS NAIP

Shoreline jurisdiction boundaries depicted on this map are approximate. They have not been formally delineated or surveyed and are intended for planning purposes only. Additional site-specific evaluation may be needed to confirm/verify information shown on this map.



Surface Water System

Figure 7.23: Aberdeen

Date: 10/2/2014

- Preliminary Shoreline Jurisdiction
- Reaches
- City Boundary
- SMA Lakes
- SMA Rivers
- Highways

Road Crossing - Blockage Type

- N/A
- None
- Partial
- Total
- Unknown

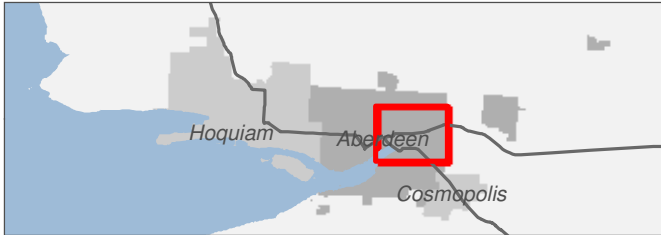
Tide Gates

- City of Aberdeen
- City of Hoquiam
- Tide Gate per WDFW

0 0.25 0.5 Miles

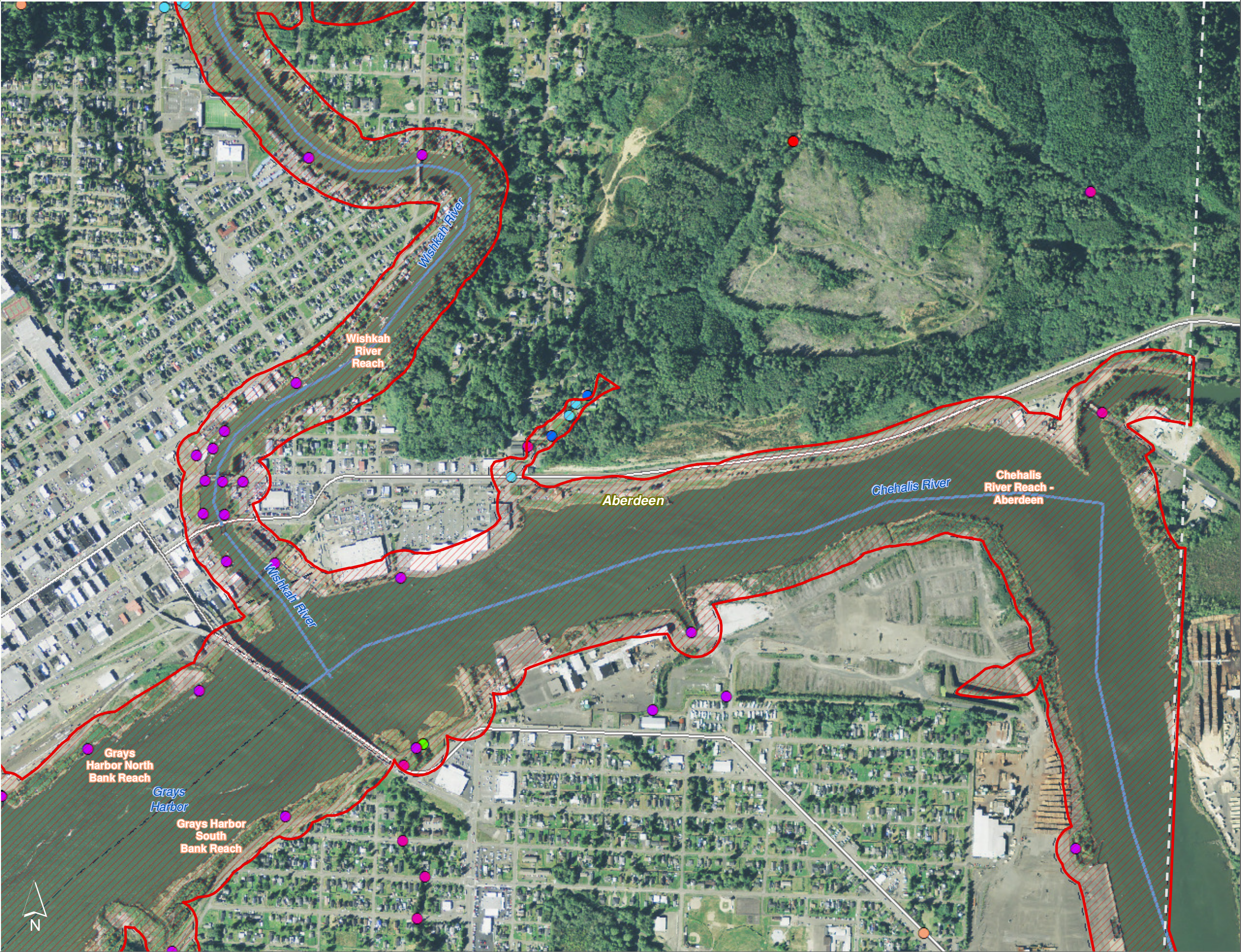
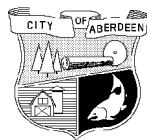
1:10,000

Area of interest in red



Source: Grays Harbor County, USFWS NWI, FEMA, WA DNR, WSDOT, DOE, NRCS NAIP

Shoreline jurisdiction boundaries depicted on this map are approximate. They have not been formally delineated or surveyed and are intended for planning purposes only. Additional site-specific evaluation may be needed to confirm/verify information shown on this map.



Surface Water System

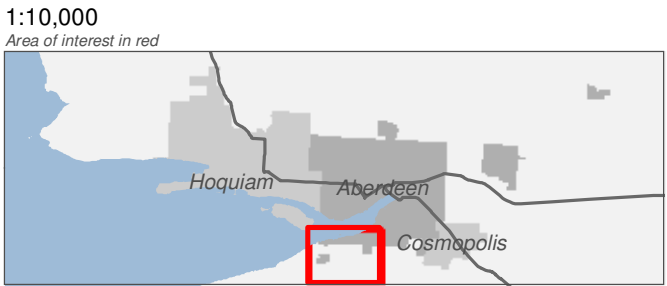
Figure 7.24: Aberdeen

Date: 10/2/2014

- Preliminary Shoreline Jurisdiction
- Reaches
- City Boundary
- SMA Lakes
- SMA Rivers
- Highways

- Road Crossing - Blockage Type**
- N/A
 - None
 - Partial
 - Total
 - Unknown
- Tide Gates**
- City of Aberdeen
 - City of Hoquiam
 - Tide Gate per WDFW

0 0.25 0.5 Miles



Source: Grays Harbor County, USFWS NWI, FEMA, WA DNR, WSDOT, DOE, NRCS NAIP


Shoreline jurisdiction boundaries depicted on this map are approximate. They have not been formally delineated or surveyed and are intended for planning purposes only. Additional site-specific evaluation may be needed to confirm/verify information shown on this map.



Surface Water System

Figure 7.25: Aberdeen

Date: 10/2/2014

 Preliminary Shoreline Jurisdiction

 Reaches





 City Boundary

 SMA Lakes




 SMA Rivers

 Highways

**Road Crossing -
Blockage Type**

-  N/A
-  None
-  Partial
-  Total
-  Unknown

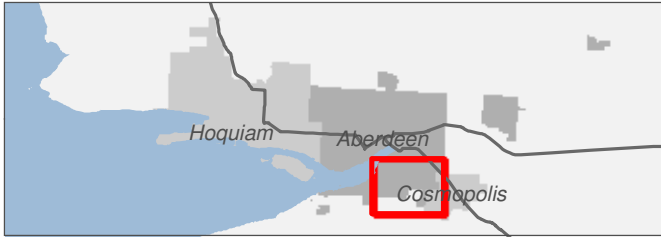
Tide Gates

-  City of Aberdeen
-  City of Hoquiam
-  Tide Gate per WDFW

0 0.25 0.5 Miles

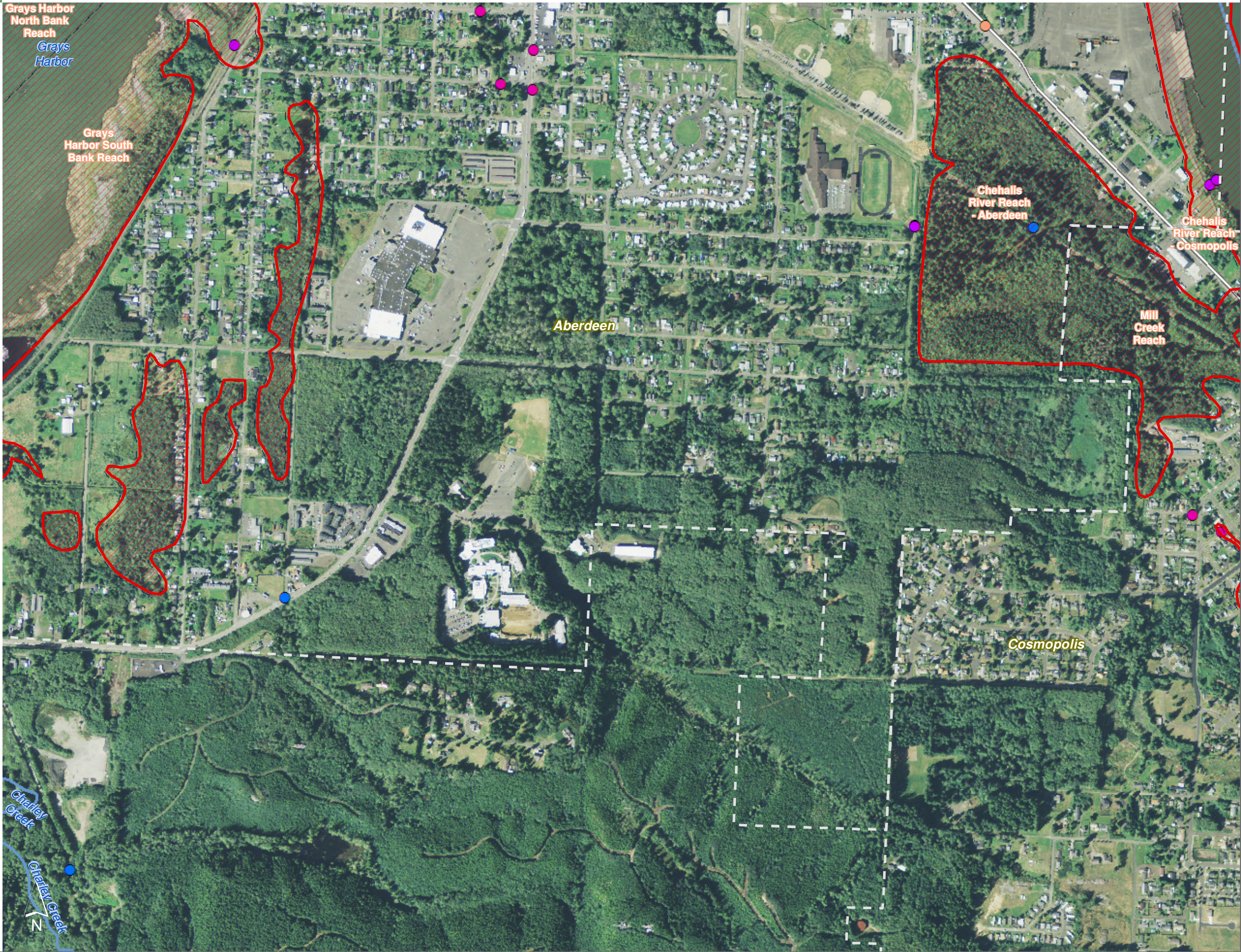
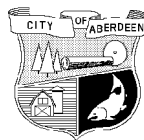
1:10,000

Area of interest in red



Source: Grays Harbor County, USFWS NWI, FEMA, WA DNR, WSDOT, DOE, NRCS NAIP

Shoreline jurisdiction boundaries depicted on this map are approximate. They have not been formally delineated or surveyed and are intended for planning purposes only. Additional site-specific evaluation may be needed to confirm/verify information shown on this map.



Surface Water System

Figure 7.3: Aberdeen

Date: 10/2/2014

- Preliminary Shoreline Jurisdiction
- Reaches
- City Boundary
- SMA Lakes
- SMA Rivers
- Highways

Road Crossing - Blockage Type

- N/A
- None
- Partial
- Total
- Unknown

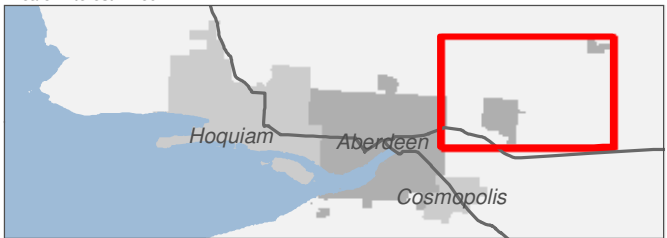
Tide Gates

- City of Aberdeen
- City of Hoquiam
- Tide Gate per WDFW

0 0.25 0.5 Miles

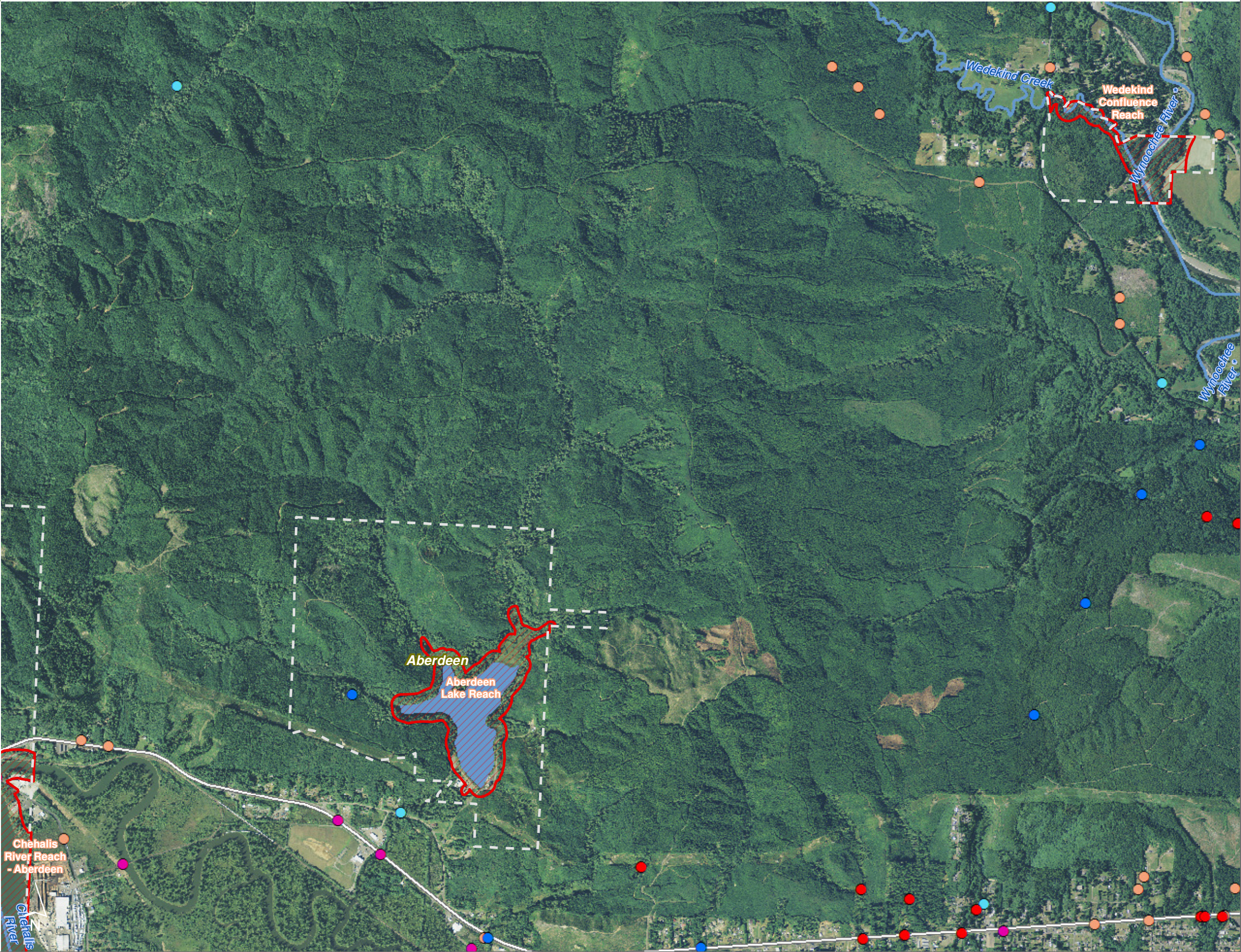
1:24,000

Area of interest in red



Source: Grays Harbor County, USFWS NWI, FEMA, WA DNR, WSDOT, DOE, NRCS NAIP

Shoreline jurisdiction boundaries depicted on this map are approximate. They have not been formally delineated or surveyed and are intended for planning purposes only. Additional site-specific evaluation may be needed to confirm/verify information shown on this map.



Surface Water System

Figure 7.31: Aberdeen

Date: 10/2/2014

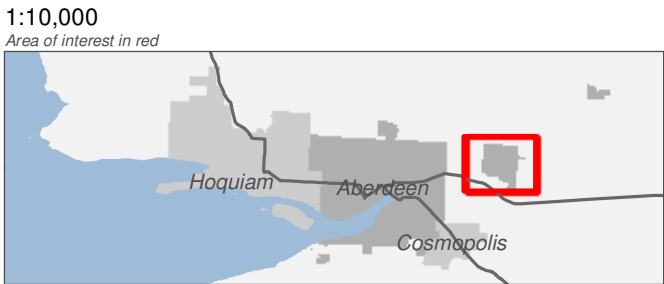
- Preliminary Shoreline Jurisdiction
- Reaches
- City Boundary
- SMA Lakes
- SMA Rivers
- Highways

- Road Crossing - Blockage Type**

 - N/A
 - None
 - Partial
 - Total
 - Unknown
- Tide Gates**

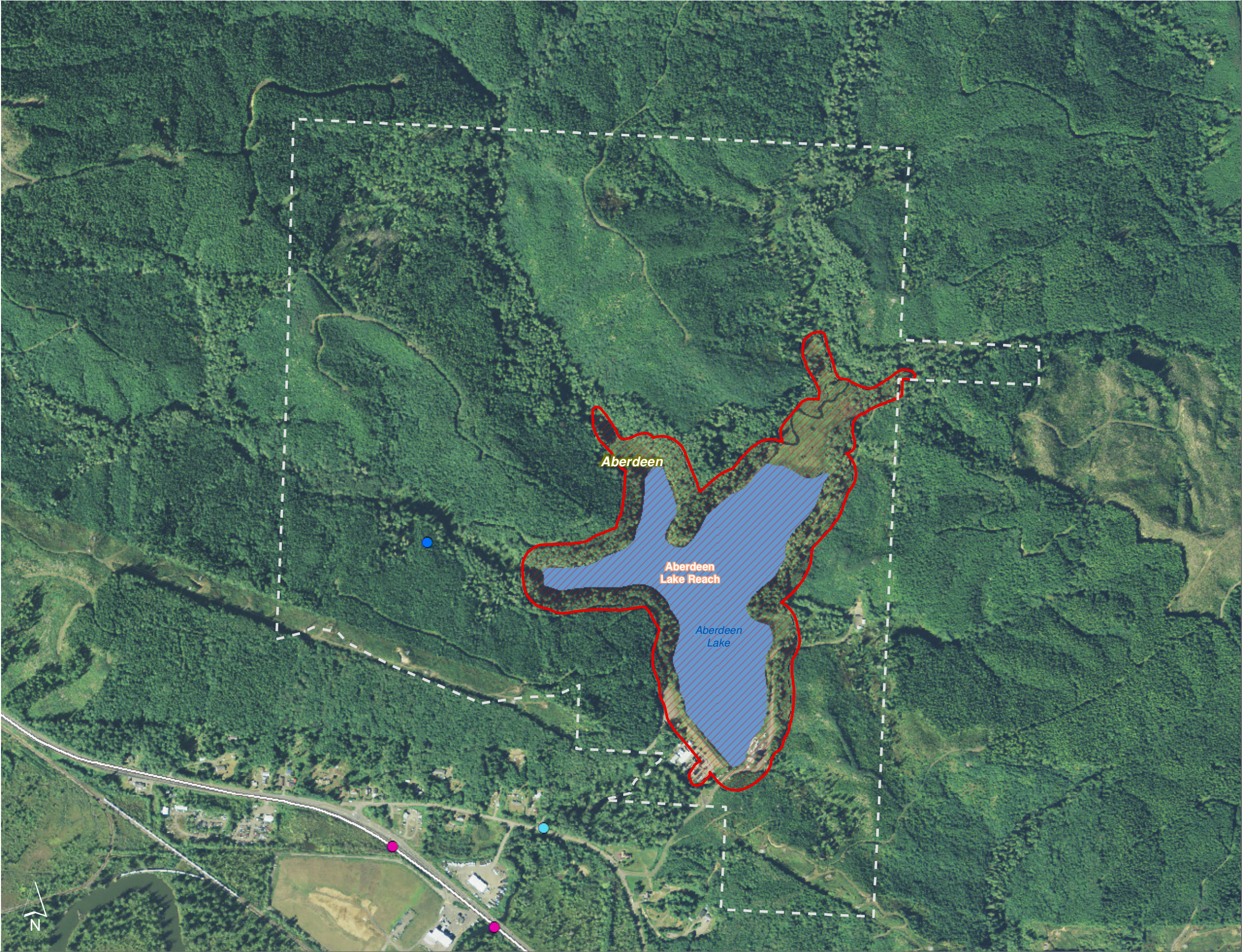
 - City of Aberdeen
 - City of Hoquiam
 - Tide Gate per WDFW

0 0.25 0.5 Miles



Source: Grays Harbor County, USFWS NWI, FEMA, WA DNR, WSDOT, DOE, NRCS NAIP

Shoreline jurisdiction boundaries depicted on this map are approximate. They have not been formally delineated or surveyed and are intended for planning purposes only. Additional site-specific evaluation may be needed to confirm/verify information shown on this map.



Surface Water System

Figure 7.32: Aberdeen

Date: 10/2/2014

- Preliminary Shoreline Jurisdiction
- Reaches
- City Boundary
- SMA Lakes
- SMA Rivers
- Highways

- Road Crossing - Blockage Type**

 - N/A
 - None
 - Partial
 - Total
 - Unknown
- Tide Gates**

 - City of Aberdeen
 - City of Hoquiam
 - Tide Gate per WDFW

0 0.25 0.5 Miles



Source: Grays Harbor County, USFWS NWI, FEMA, WA DNR, WSDOT, DOE, NRCS NAIP

Shoreline jurisdiction boundaries depicted on this map are approximate. They have not been formally delineated or surveyed and are intended for planning purposes only. Additional site-specific evaluation may be needed to confirm/verify information shown on this map.

