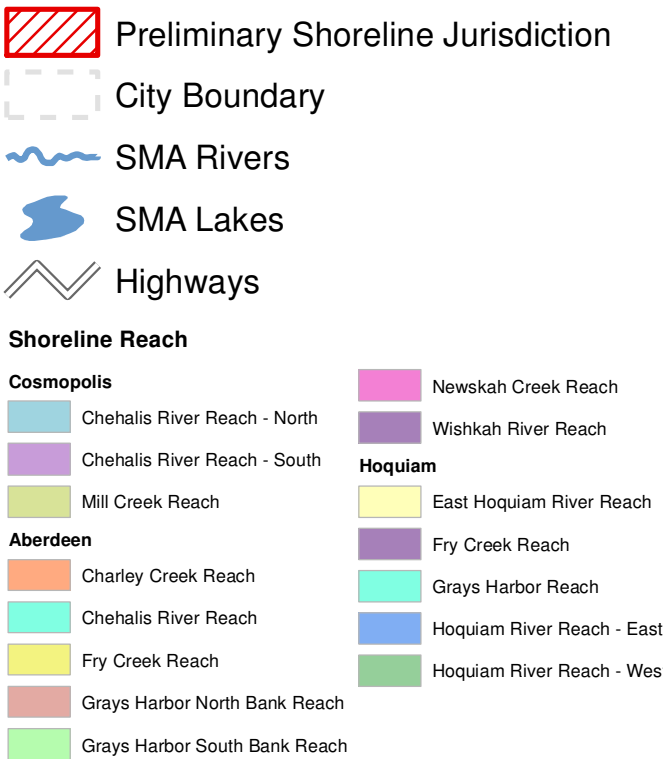


Shoreline Reaches

Figure 9.2: Aberdeen

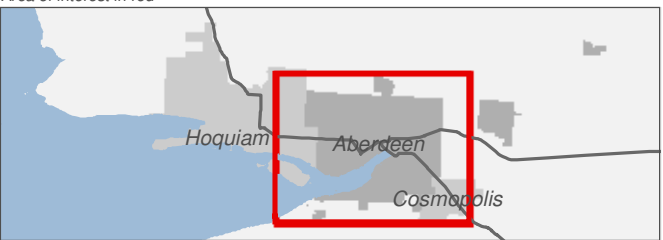
Date: 10/2/2014



0 0.25 0.5 Miles

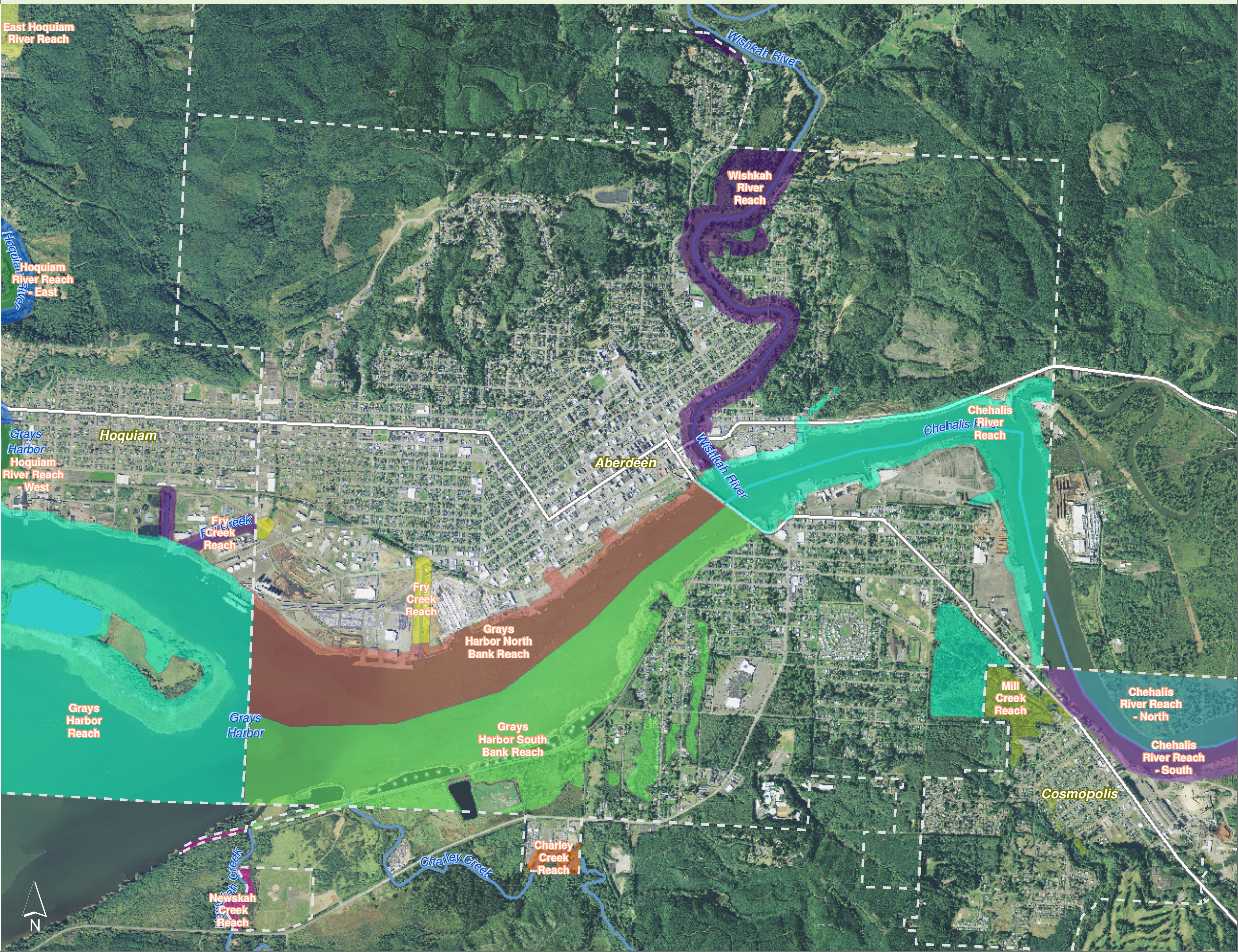
1:27,000

Area of interest in red



Source: Grays Harbor County, USFWS NWI (2011), FEMA Preliminary DFIRM (2013), WA DNR, WSDOT, DOE, NRCS NAIP (2013)






Shoreline jurisdiction boundaries depicted on this map are approximate. They have not been formally delineated or surveyed and are intended for planning purposes only. Additional site-specific evaluation may be needed to confirm/verify information shown on this map.




Shoreline Reaches

Figure 9.21: Aberdeen

Date: 10/2/2014

-  Preliminary Shoreline Jurisdiction
-  City Boundary
-  SMA Rivers
-  SMA Lakes
-  Highways

Shoreline Reach

- Aberdeen**
-  Wishkah River Reach

0 0.25 0.5 Miles



Source: Grays Harbor County, USFWS NWI (2011), FEMA Preliminary DFIRM (2013), WA DNR, WSDOT, DOE, NRCS NAIP (2013)






Shoreline jurisdiction boundaries depicted on this map are approximate. They have not been formally delineated or surveyed and are intended for planning purposes only. Additional site-specific evaluation may be needed to confirm/verify information shown on this map.








Shoreline Reaches

Figure 9.22: Aberdeen

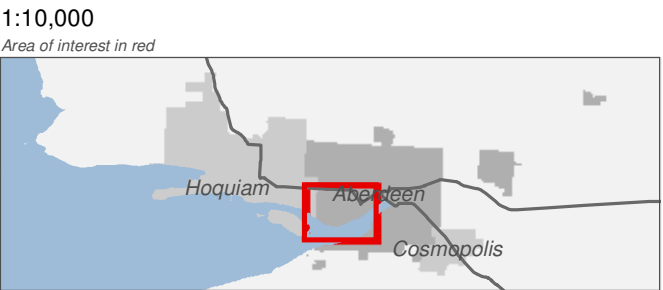
Date: 10/2/2014

-  Preliminary Shoreline Jurisdiction
-  City Boundary
-  SMA Rivers
-  SMA Lakes
-  Highways

Shoreline Reach

- Aberdeen**
-  Fry Creek Reach
 -  Grays Harbor North Bank Reach
 -  Grays Harbor South Bank Reach
- Hoquiam**
-  Fry Creek Reach
 -  Grays Harbor Reach

0 0.25 0.5 Miles



Source: Grays Harbor County, USFWS NWI (2011), FEMA Preliminary DFIRM (2013), WA DNR, WSDOT, DOE, NRCS NAIP (2013)






Shoreline jurisdiction boundaries depicted on this map are approximate. They have not been formally delineated or surveyed and are intended for planning purposes only. Additional site-specific evaluation may be needed to confirm/verify information shown on this map.



Shoreline Reaches


Figure 9.23: Aberdeen

Date: 10/2/2014

-  Preliminary Shoreline Jurisdiction
-  City Boundary
-  SMA Rivers
-  SMA Lakes
-  Highways

Shoreline Reach

Aberdeen

-  Chehalis River Reach
-  Grays Harbor North Bank Reach
-  Grays Harbor South Bank Reach
-  Wishkah River Reach

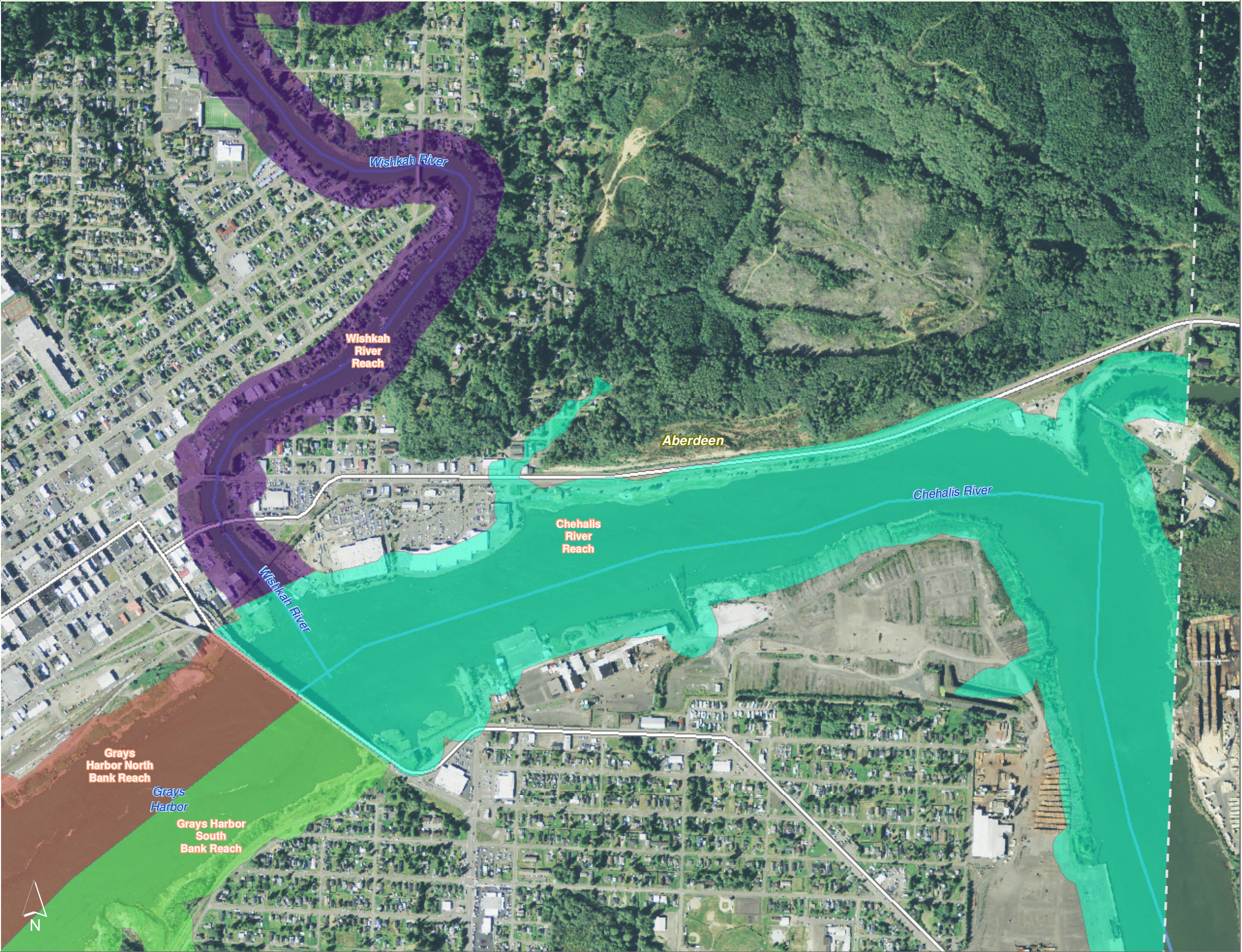
0 0.25 0.5 Miles

1:10,000
Area of interest in red



Source: Grays Harbor County, USFWS NWI (2011), FEMA Preliminary DFIRM (2013), WA DNR, WSDOT, DOE, NRCS NAIP (2013)






Shoreline jurisdiction boundaries depicted on this map are approximate. They have not been formally delineated or surveyed and are intended for planning purposes only. Additional site-specific evaluation may be needed to confirm/verify information shown on this map.



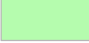

Shoreline Reaches

Figure 9.24: Aberdeen

Date: 10/2/2014

-  Preliminary Shoreline Jurisdiction
-  City Boundary
-  SMA Rivers
-  SMA Lakes
-  Highways

Shoreline Reach

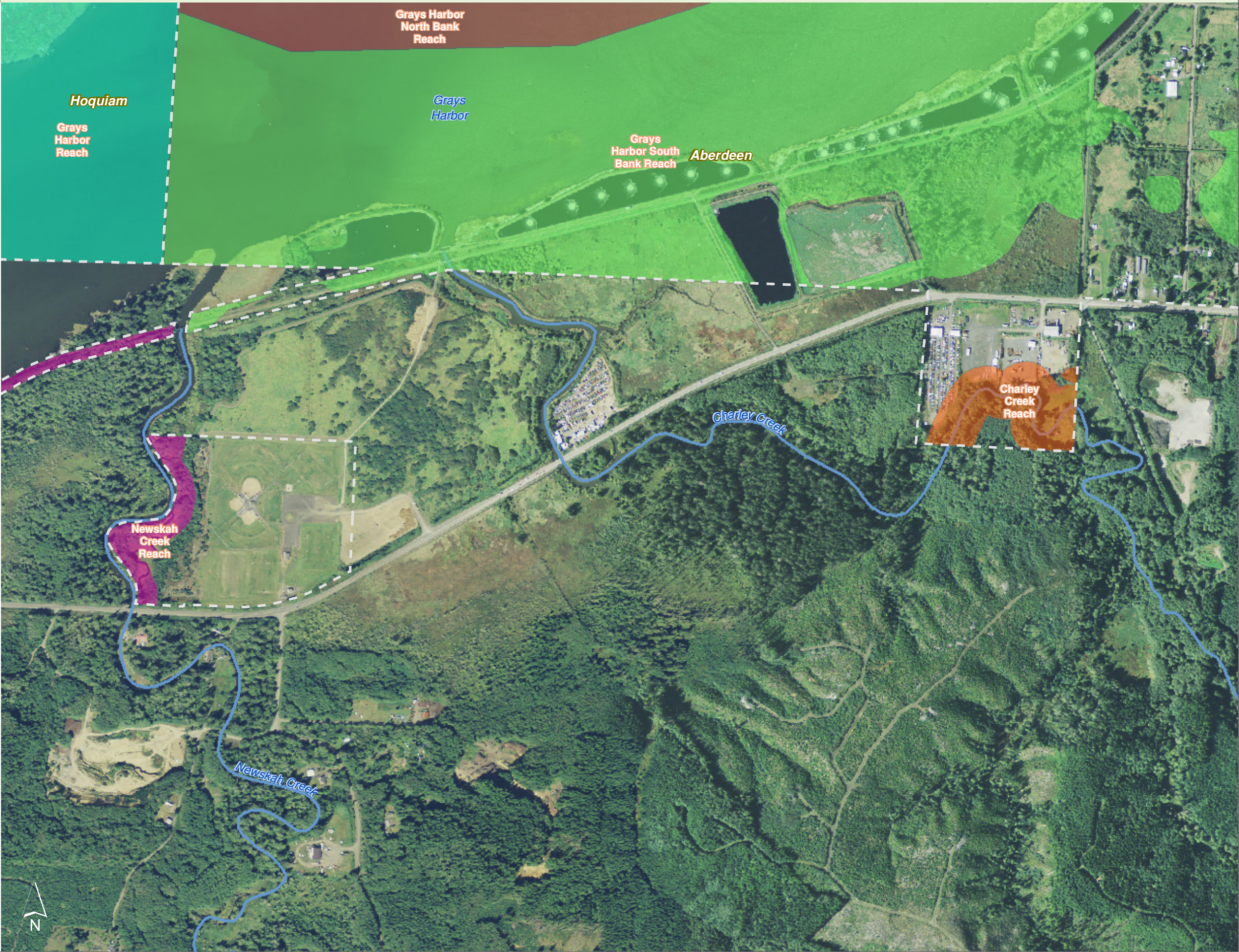
- Aberdeen**
-  Charley Creek Reach
 -  Grays Harbor North Bank Reach
 -  Grays Harbor South Bank Reach
 -  Newskah Creek Reach
- Hoquiam**
-  Grays Harbor Reach

0 0.25 0.5 Miles



Source: Grays Harbor County, USFWS NWI (2011), FEMA Preliminary DFIRM (2013), WA DNR, WSDOT, DOE, NRCS NAIP (2013)






Shoreline jurisdiction boundaries depicted on this map are approximate. They have not been formally delineated or surveyed and are intended for planning purposes only. Additional site-specific evaluation may be needed to confirm/verify information shown on this map.





Shoreline Reaches



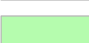
Figure 9.25: Aberdeen

Date: 10/2/2014

-  Preliminary Shoreline Jurisdiction
-  City Boundary
-  SMA Rivers
-  SMA Lakes
-  Highways

Shoreline Reach

- Cosmopolis**
-  Chehalis River Reach - South
 -  Mill Creek Reach

- Aberdeen**
-  Chehalis River Reach
 -  Grays Harbor North Bank Reach
 -  Grays Harbor South Bank Reach

0 0.25 0.5 Miles



Source: Grays Harbor County, USFWS NWI (2011), FEMA Preliminary DFIRM (2013), WA DNR, WSDOT, DOE, NRCS NAIP (2013)






Shoreline jurisdiction boundaries depicted on this map are approximate. They have not been formally delineated or surveyed and are intended for planning purposes only. Additional site-specific evaluation may be needed to confirm/verify information shown on this map.




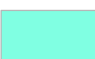

Shoreline Reaches

Figure 9.3: Aberdeen

Date: 10/2/2014

-  Preliminary Shoreline Jurisdiction
-  City Boundary
-  SMA Rivers
-  SMA Lakes
-  Highways

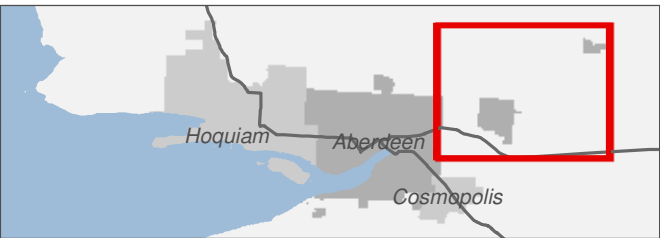
Shoreline Reach

- Aberdeen**
-  Aberdeen Lake Reach
 -  Chehalis River Reach
 -  Wedekind Confluence Reach

0 0.25 0.5 Miles

1:24,000

Area of interest in red



Source: Grays Harbor County, USFWS NWI (2011), FEMA Preliminary DFIRM (2013), WA DNR, WSDOT, DOE, NRCS NAIP (2013)






Shoreline jurisdiction boundaries depicted on this map are approximate. They have not been formally delineated or surveyed and are intended for planning purposes only. Additional site-specific evaluation may be needed to confirm/verify information shown on this map.



Shoreline Reaches

Figure 9.31: Aberdeen

Date: 10/2/2014

-  Preliminary Shoreline Jurisdiction
-  City Boundary
-  SMA Rivers
-  SMA Lakes
-  Highways

Shoreline Reach

- Aberdeen**
-  Aberdeen Lake Reach

0 0.25 0.5 Miles



Source: Grays Harbor County, USFWS NWI (2011), FEMA Preliminary DFIRM (2013), WA DNR, WSDOT, DOE, NRCS NAIP (2013)






Shoreline jurisdiction boundaries depicted on this map are approximate. They have not been formally delineated or surveyed and are intended for planning purposes only. Additional site-specific evaluation may be needed to confirm/verify information shown on this map.




Shoreline Reaches

Figure 9.32: Aberdeen

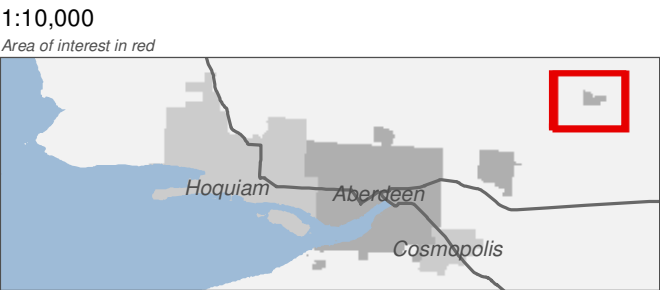
Date: 10/2/2014

-  Preliminary Shoreline Jurisdiction
-  City Boundary
-  SMA Rivers
-  SMA Lakes
-  Highways

Shoreline Reach

- Aberdeen**
-  Wedekind Confluence Reach

0 0.25 0.5 Miles



Source: Grays Harbor County, USFWS NWI (2011), FEMA Preliminary DFIRM (2013), WA DNR, WSDOT, DOE, NRCS NAIP (2013)

Shoreline jurisdiction boundaries depicted on this map are approximate. They have not been formally delineated or surveyed and are intended for planning purposes only. Additional site-specific evaluation may be needed to confirm/verify information shown on this map.

