

Figure 14.2: Aberdeen

Date: 10/2/2014

- Preliminary Shoreline Jurisdiction
- Reaches
- City Boundary
- SMA Rivers
- SMA Lakes
- Highways
- City of Hoquiam Zoning Districts

C1 - General Commercial District

I - Industrial District

NR - Natural Resource District

R1 - Low Density Residential

R2 - High Density Residential
- City of Hoquiam Zoning Overlay District

Waterfront Overlay District
- City of Aberdeen Zoning

CD - Downtown Commercial

CG - General Commercial

CR - Commercial/Residential

I - Industrial

LI - Light Industrial

MI - Major Institutional
- City of Cosmopolis Zoning Districts

RM - Multiple Family Residential

RS - Single Family Residential

WD - Waterfront Development

M - Manufacturing

MU - Mixed Use

PR - Public Reserve

R100 - Residential (Low Density)

R57 - Residential (Medium Density)

WA - Waterfront Use

0 0.25 0.5 Miles

1:27,000

Area of interest in red



Source: Grays Harbor County, USFWS NWI (2011), FEMA Preliminary DFIRM (2013), DNR, WSDOT, Ecology, NRCS NAIP

Shoreline jurisdiction boundaries depicted on this map are approximate. They have not been formally delineated or surveyed and are intended for planning purposes only. Additional site-specific evaluation may be needed to confirm/verify information shown on this map.

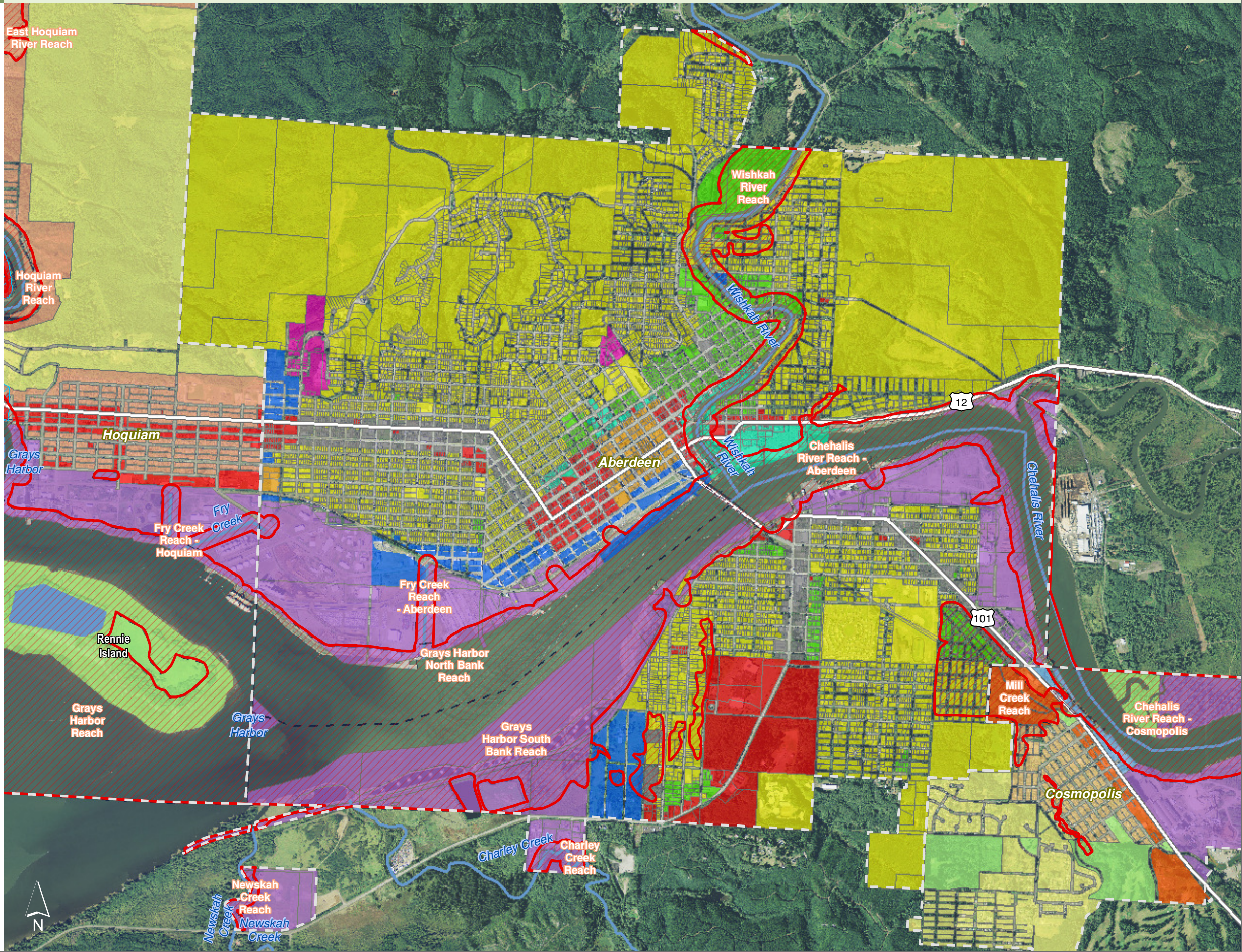










Figure 14.21: Aberdeen

Date: 10/2/2014

-  Preliminary Shoreline Jurisdiction
-  Reaches
-  City Boundary
-  SMA Rivers
-  SMA Lakes
-  Highways

City of Aberdeen Zoning

-  RM - Multiple Family Residential
-  RS - Single Family Residential

0 0.25 0.5 Miles

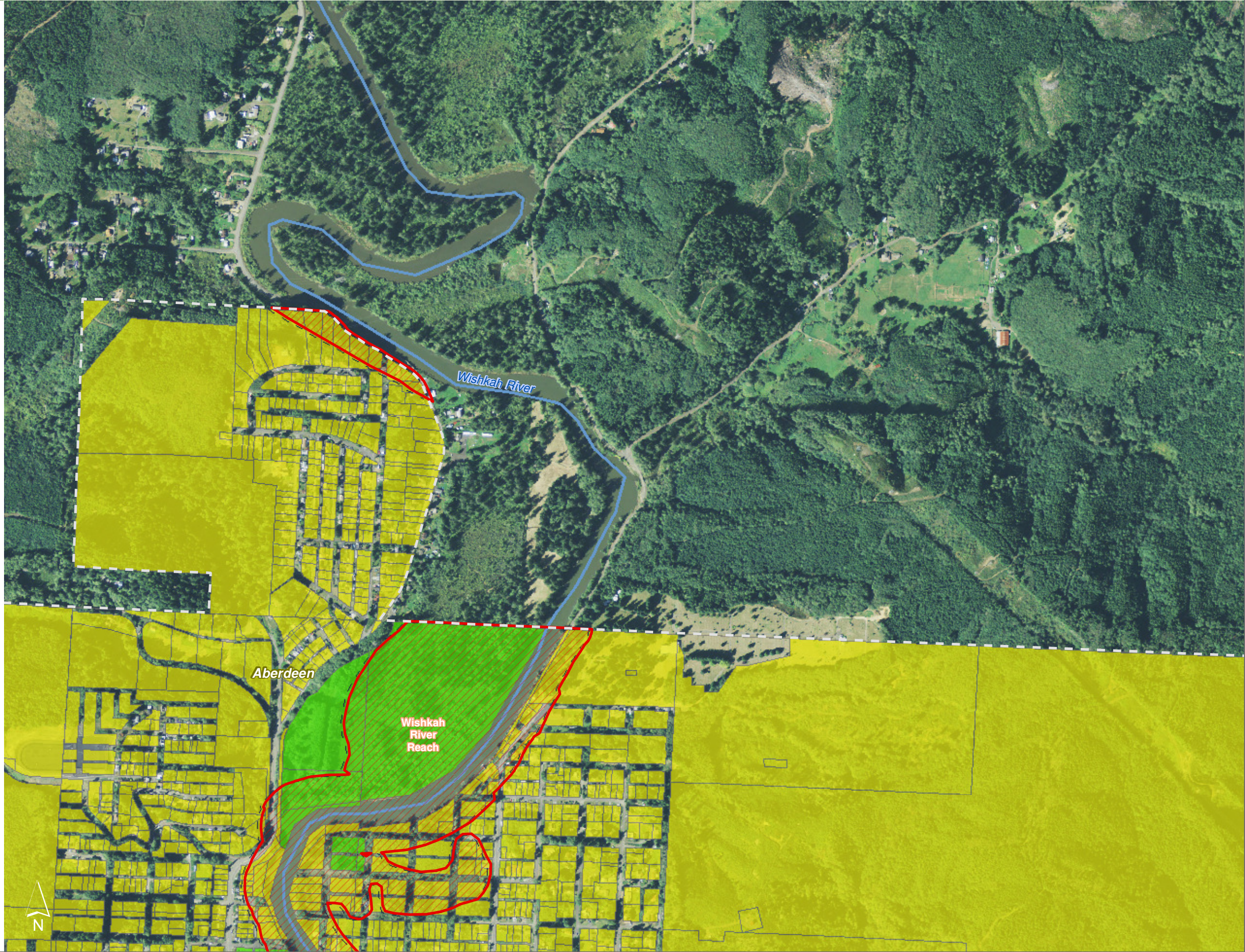
1:10,000

Area of interest in red



Source: Grays Harbor County, USFWS NWI (2011), FEMA Preliminary DFIRM (2013), DNR, WSDOT, Ecology, NRCS NAIP

Shoreline jurisdiction boundaries depicted on this map are approximate. They have not been formally delineated or surveyed and are intended for planning purposes only. Additional site-specific evaluation may be needed to confirm/verify information shown on this map.



Zoning

Figure 14.22: Aberdeen

Date: 10/2/2014

- Preliminary Shoreline Jurisdiction
- Reaches
- City Boundary
- SMA Rivers
- SMA Lakes
- Highways

City of Hoquiam Zoning Districts

- C1 - General Commercial District
- I - Industrial District
- NR - Natural Resource District
- R2 - High Density Residential

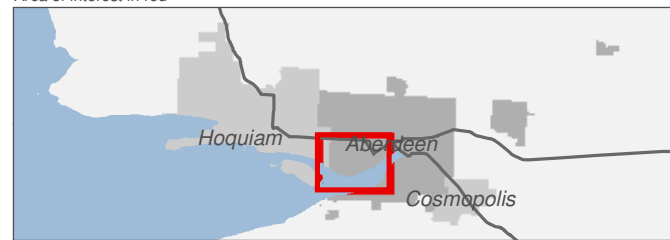
City of Aberdeen Zoning

- CD - Downtown Commercial
- CG - General Commercial
- CR - Commercial/Residential
- I - Industrial
- LI - Light Industrial
- RM - Multiple Family Residential
- RS - Single Family Residential
- WD - Waterfront Development

0 0.25 0.5 Miles

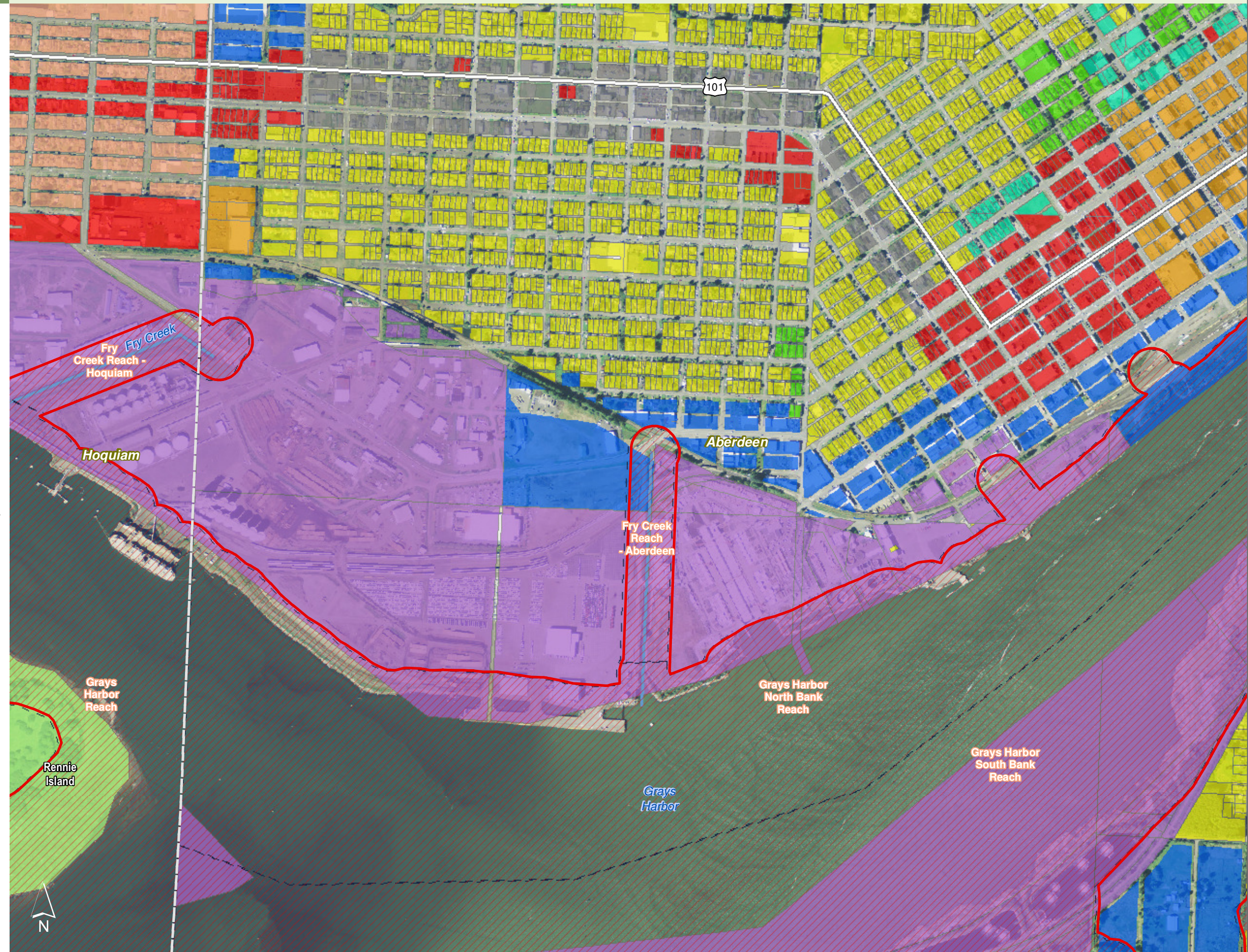
1:10,000

Area of interest in red



Source: Grays Harbor County, USFWS NWI (2011), FEMA Preliminary DFIRM (2013), DNR, WSDOT, Ecology, NRCS NAIP

Shoreline jurisdiction boundaries depicted on this map are approximate. They have not been formally delineated or surveyed and are intended for planning purposes only. Additional site-specific evaluation may be needed to confirm/verify information shown on this map.



Zoning

Figure 14.23: Aberdeen

Date: 10/2/2014

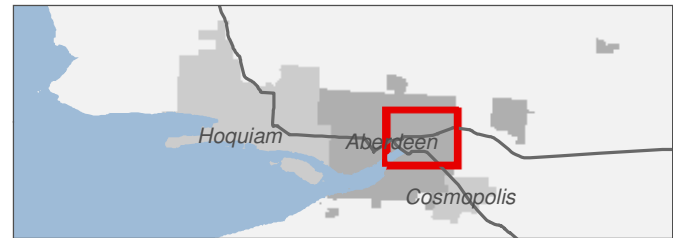
- Preliminary Shoreline Jurisdiction
- Reaches
- City Boundary
- SMA Rivers
- SMA Lakes
- Highways

- City of Aberdeen Zoning**
- CD - Downtown Commercial
 - CG - General Commercial
 - CR - Commercial/Residential
 - I - Industrial
 - LI - Light Industrial
 - MI - Major Institutional
 - RM - Multiple Family Residential
 - RS - Single Family Residential
 - WD - Waterfront Development

0 0.25 0.5 Miles

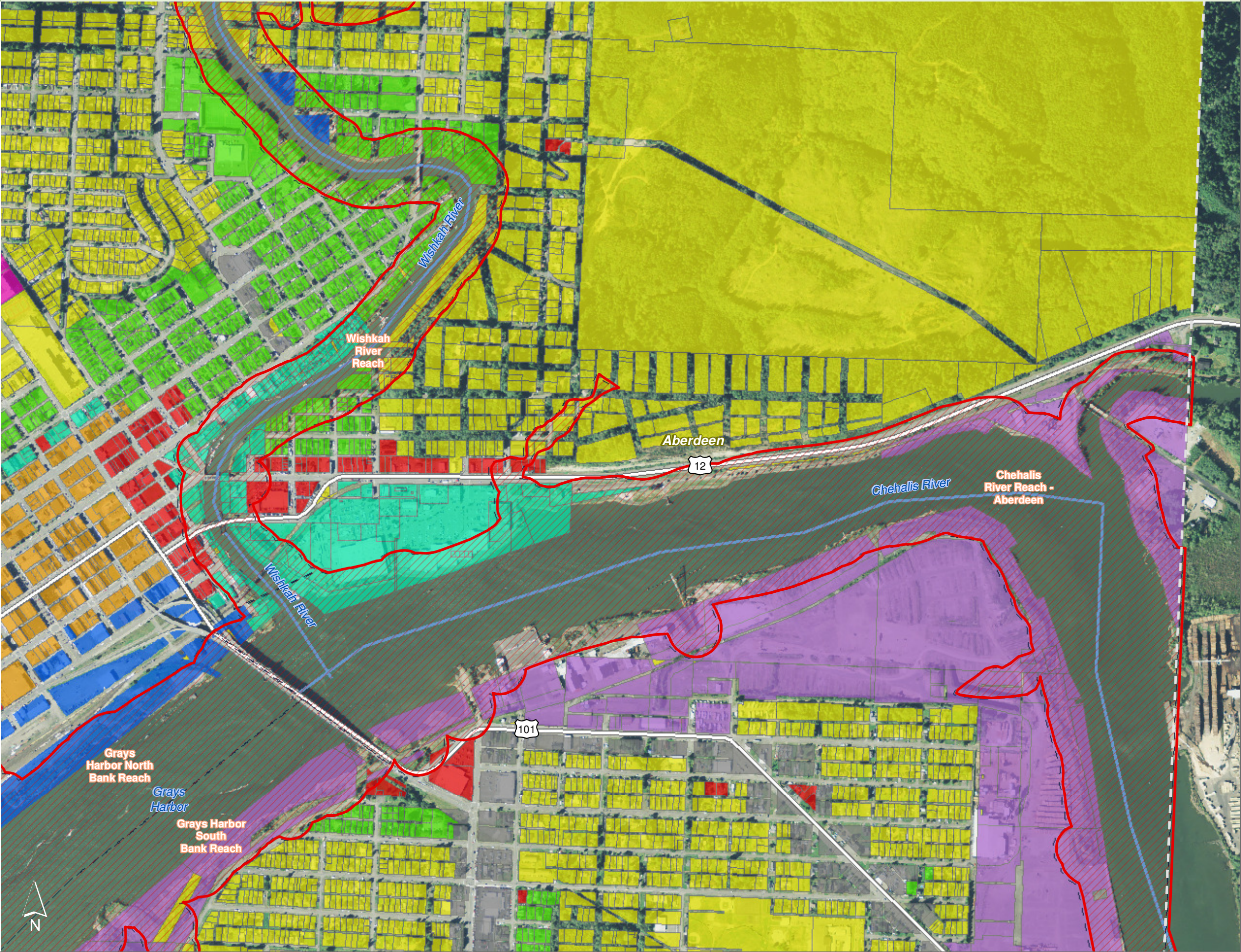
1:10,000

Area of interest in red



Source: Grays Harbor County, USFWS NWI (2011), FEMA Preliminary DFIRM (2013), DNR, WSDOT, Ecology, NRCS NAIP

Shoreline jurisdiction boundaries depicted on this map are approximate. They have not been formally delineated or surveyed and are intended for planning purposes only. Additional site-specific evaluation may be needed to confirm/verify information shown on this map.



Zoning

Figure 14.24: Aberdeen

Date: 10/2/2014

- Preliminary Shoreline Jurisdiction
- Reaches
- City Boundary
- SMA Rivers
- SMA Lakes
- Highways

City of Hoquiam Zoning Districts

NR - Natural Resource District

City of Aberdeen Zoning

- CG - General Commercial
- CR - Commercial/Residential
- I - Industrial
- LI - Light Industrial
- RS - Single Family Residential

0 0.25 0.5 Miles

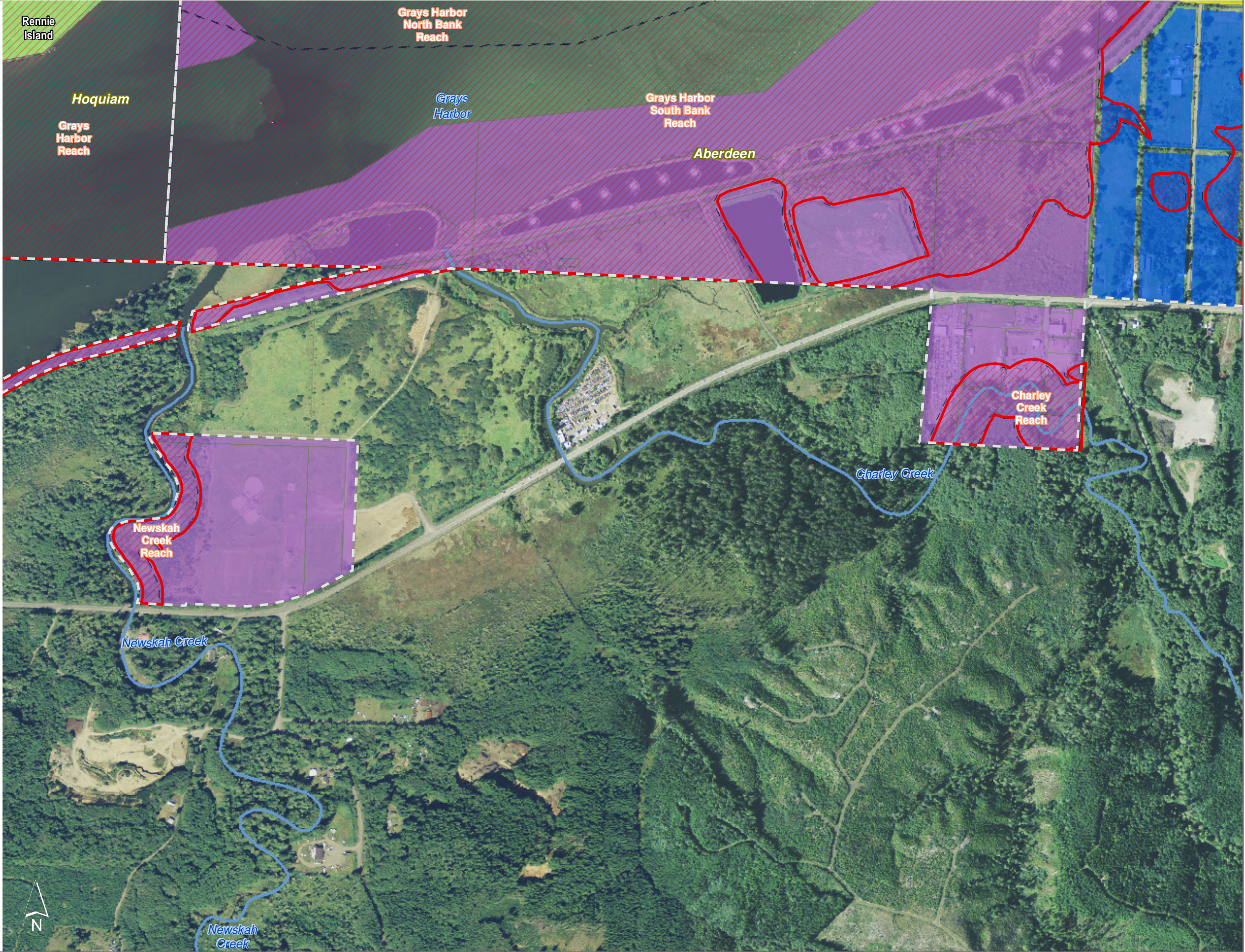
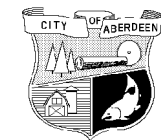
1:10,000

Area of interest in red



Source: Grays Harbor County, USFWS NWI (2011), FEMA Preliminary DFIRM (2013), DNR, WSDOT, Ecology, NRCS NAIP

Shoreline jurisdiction boundaries depicted on this map are approximate. They have not been formally delineated or surveyed and are intended for planning purposes only. Additional site-specific evaluation may be needed to confirm/verify information shown on this map.



Zoning

Figure 14.25: Aberdeen

Date: 10/2/2014

- Preliminary Shoreline Jurisdiction
- Reaches
- City Boundary
- SMA Rivers
- SMA Lakes
- Highways

- City of Aberdeen Zoning**
- CG - General Commercial
 - CR - Commercial/Residential
 - I - Industrial
 - LI - Light Industrial
 - RM - Multiple Family Residential
 - RS - Single Family Residential

- City of Cosmopolis Zoning Districts**
- MU - Mixed Use
 - PR - Public Reserve
 - R100 - Residential (Low Density)
 - R57 - Residential (Medium Density)
 - WA - Waterfront Use

0 0.25 0.5 Miles

1:10,000

Area of interest in red



Source: Grays Harbor County, USFWS NWI (2011), FEMA Preliminary DFIRM (2013), DNR, WSDOT, Ecology, NRCS NAIP

Shoreline jurisdiction boundaries depicted on this map are approximate. They have not been formally delineated or surveyed and are intended for planning purposes only. Additional site-specific evaluation may be needed to confirm/verify information shown on this map.

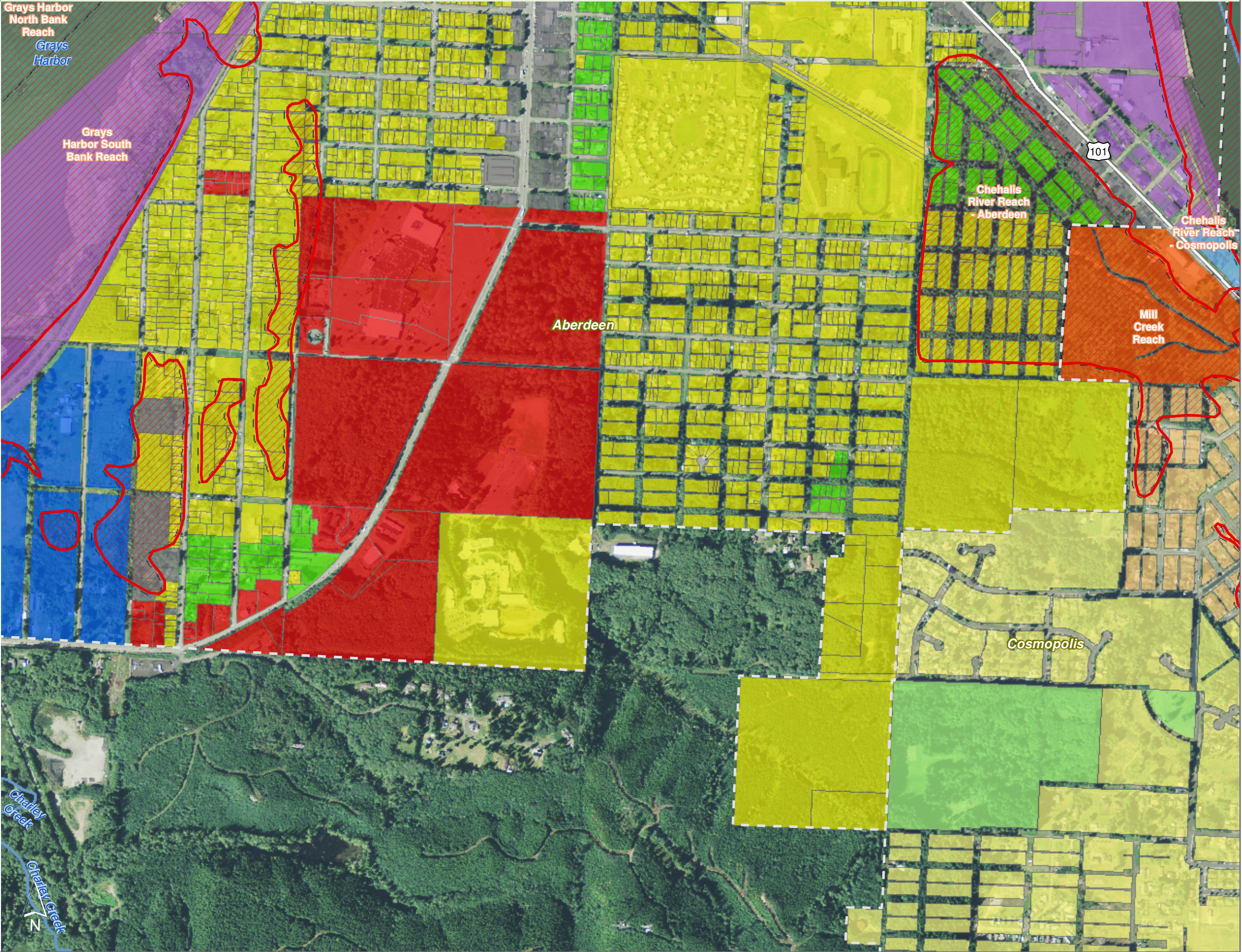





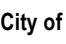




Figure 14.3: Aberdeen

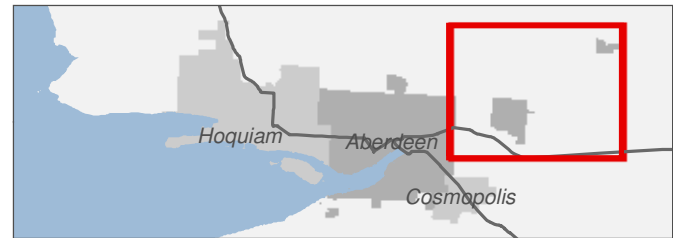
Date: 10/2/2014

-  Preliminary Shoreline Jurisdiction
-  Reaches
-  City Boundary
-  SMA Rivers
-  SMA Lakes
-  Highways
- City of Aberdeen Zoning**
 -  I - Industrial
 -  RS - Single Family Residential

0 0.25 0.5 Miles

1:24,000

Area of interest in red



Source: Grays Harbor County, USFWS NWI (2011), FEMA Preliminary DFIRM (2013), DNR, WSDOT, Ecology, NRCS NAIP

Shoreline jurisdiction boundaries depicted on this map are approximate. They have not been formally delineated or surveyed and are intended for planning purposes only. Additional site-specific evaluation may be needed to confirm/verify information shown on this map.

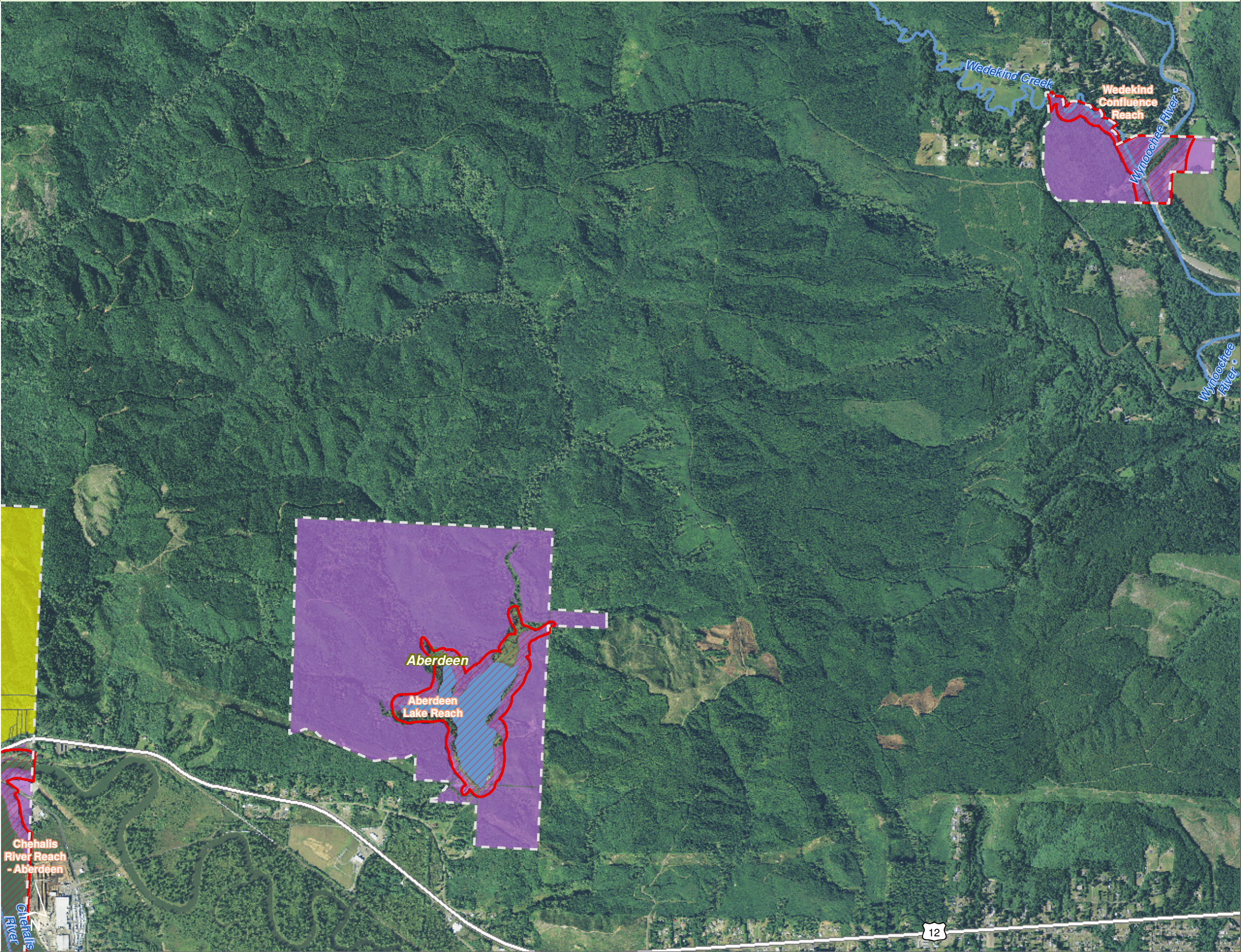





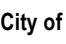




Figure 14.31: Aberdeen

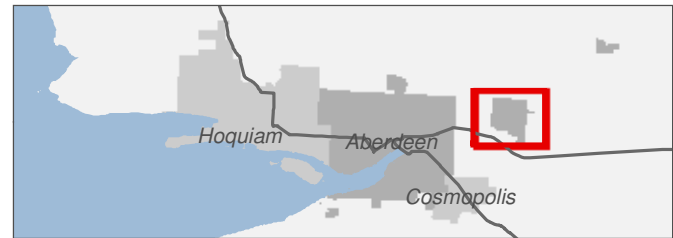
Date: 10/2/2014

-  Preliminary Shoreline Jurisdiction
-  Reaches
-  City Boundary
-  SMA Rivers
-  SMA Lakes
-  Highways
- City of Aberdeen Zoning**
 -  I - Industrial
 -  RS - Single Family Residential

0 0.25 0.5 Miles

1:10,000

Area of interest in red



Source: Grays Harbor County, USFWS NWI (2011), FEMA Preliminary DFIRM (2013), DNR, WSDOT, Ecology, NRCS NAIP

Shoreline jurisdiction boundaries depicted on this map are approximate. They have not been formally delineated or surveyed and are intended for planning purposes only. Additional site-specific evaluation may be needed to confirm/verify information shown on this map.

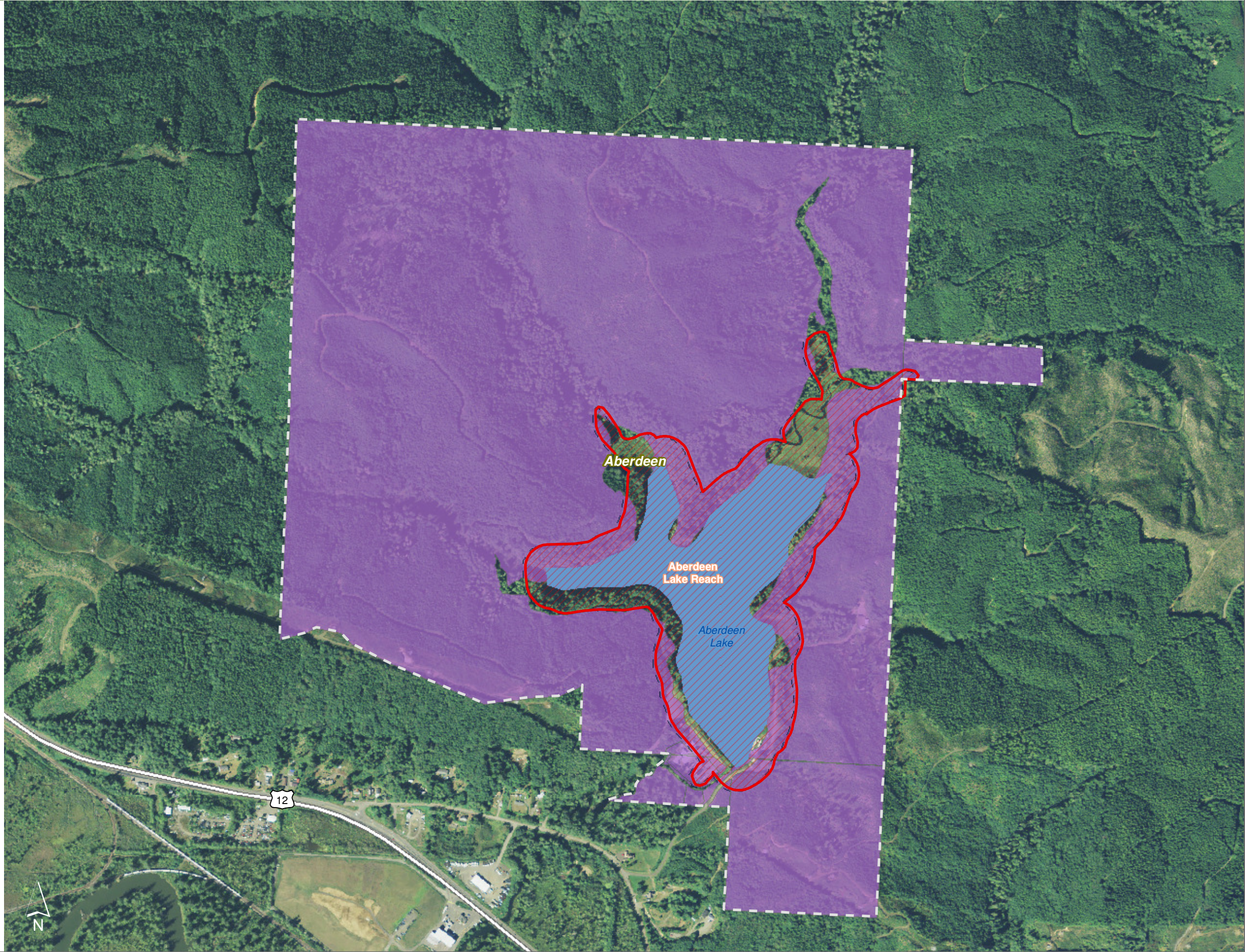





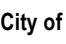




Figure 14.32: Aberdeen

Date: 10/2/2014

-  Preliminary Shoreline Jurisdiction
-  Reaches
-  City Boundary
-  SMA Rivers
-  SMA Lakes
-  Highways
- City of Aberdeen Zoning**
-  I - Industrial
-  RS - Single Family Residential

0 0.25 0.5 Miles

1:10,000

Area of interest in red



Source: Grays Harbor County, USFWS NWI (2011), FEMA Preliminary DFIRM (2013), DNR, WSDOT, Ecology, NRCS NAIP

Shoreline jurisdiction boundaries depicted on this map are approximate. They have not been formally delineated or surveyed and are intended for planning purposes only. Additional site-specific evaluation may be needed to confirm/verify information shown on this map.

