


# Geological Hazards

Figure 15.2: Aberdeen


Date: 10/2/2014

**Tsunami Inundation**

 Cascadia Scenario 1A Seismic Event

**Liquefaction Susceptibility**

 Moderate to High

 Low to Moderate

 Very Low to Low

 Very Low

 Preliminary Shoreline Jurisdiction

 Reaches

 City Boundary

 SMA Rivers

 SMA Lakes

 Highways

0 0.25 0.5 Miles

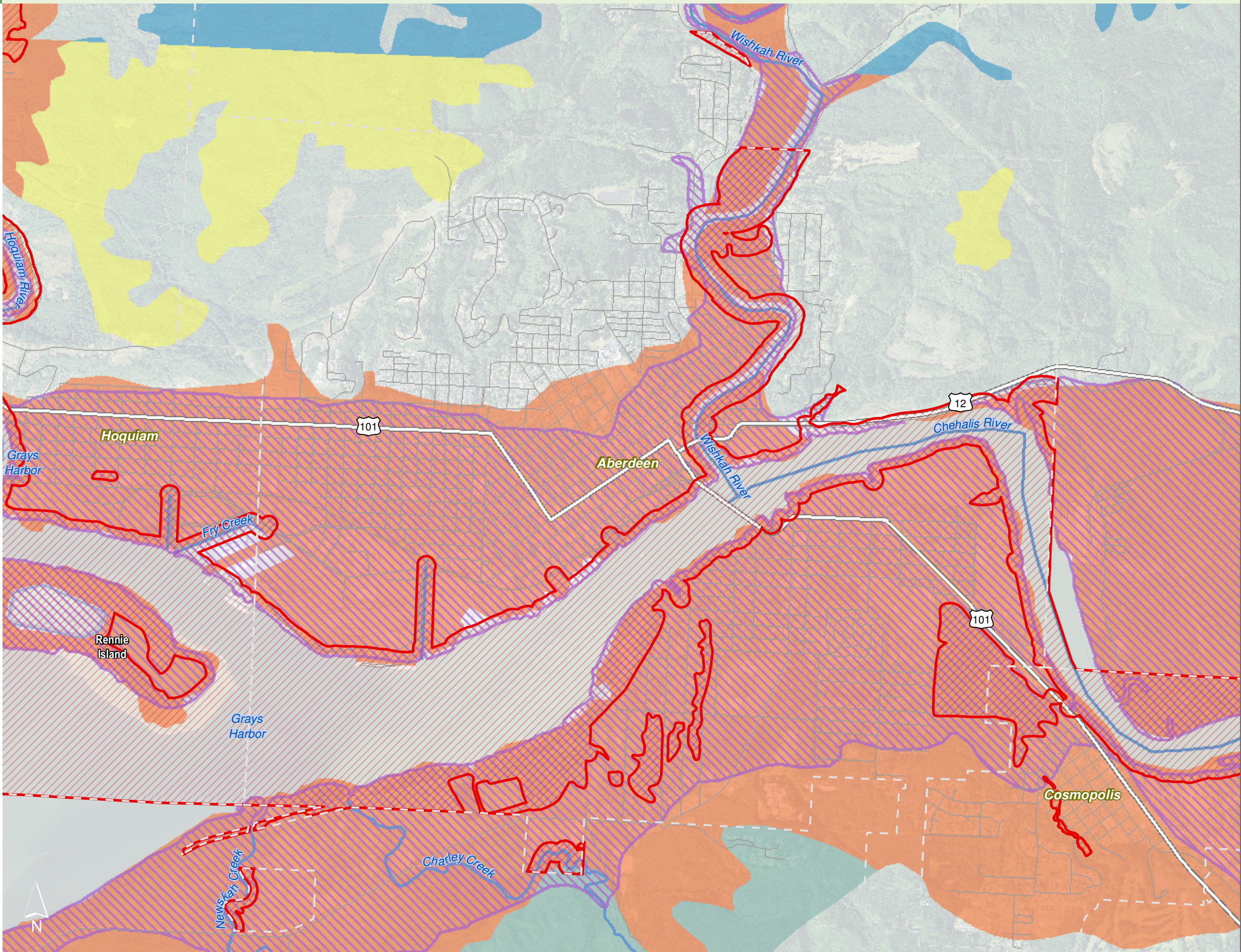
1:27,000

Area of interest in red



Source: Grays Harbor County, USFWS NWI (2011), FEMA Preliminary DFIRM (2013), WA DNR, WSDOT, DOE, NRCS NAIP (2013)

Shoreline jurisdiction boundaries depicted on this map are approximate. They have not been formally delineated or surveyed and are intended for planning purposes only. Additional site-specific evaluation may be needed to confirm/verify information shown on this map.






# Geological Hazards


Figure 15.21: Aberdeen


Date: 10/2/2014

**Tsunami Inundation**


 Cascadia Scenario 1A Seismic Event

**Liquefaction Susceptibility**

 Moderate to High

 Low to Moderate

 Very Low

 Preliminary Shoreline Jurisdiction

 Reaches

 City Boundary

 SMA Rivers

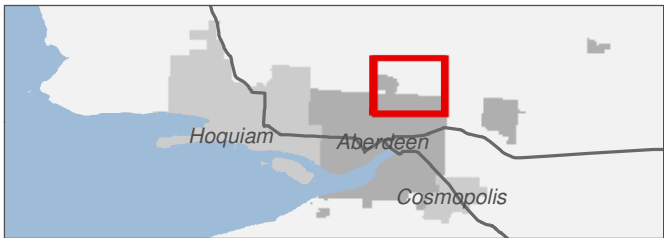
 SMA Lakes

 Highways

0 0.25 0.5 Miles

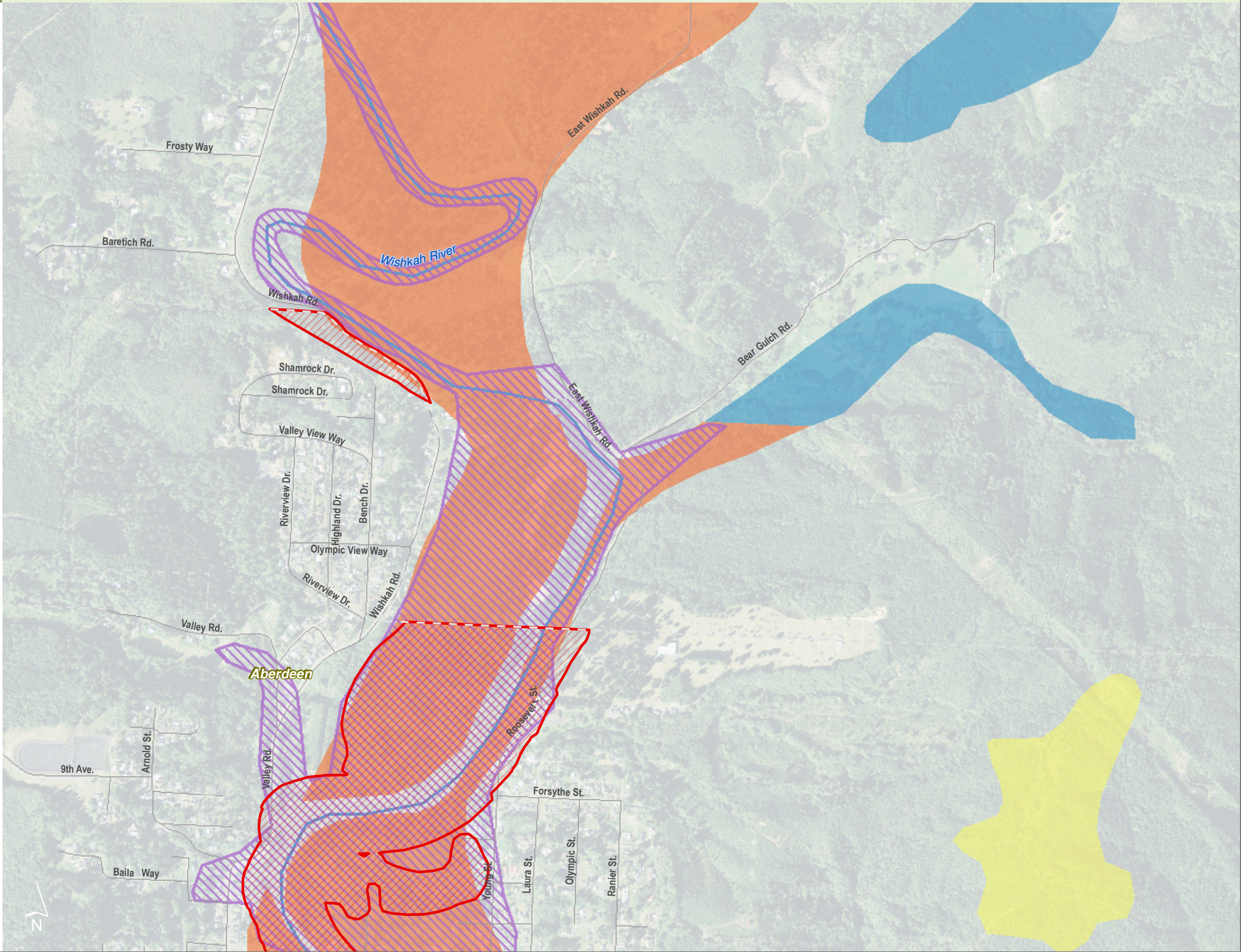
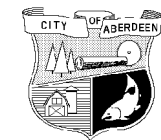
1:10,000

Area of interest in red



Source: Grays Harbor County, USFWS NWI (2011), FEMA Preliminary DFIRM (2013), WA DNR, WSDOT, DOE, NRCS NAIP (2013)

Shoreline jurisdiction boundaries depicted on this map are approximate. They have not been formally delineated or surveyed and are intended for planning purposes only. Additional site-specific evaluation may be needed to confirm/verify information shown on this map.






# Geological Hazards


Figure 15.22: Aberdeen


Date: 10/2/2014

**Tsunami Inundation**

 Cascadia Scenario 1A Seismic Event

**Liquefaction Susceptibility**

 Moderate to High

 Preliminary Shoreline Jurisdiction

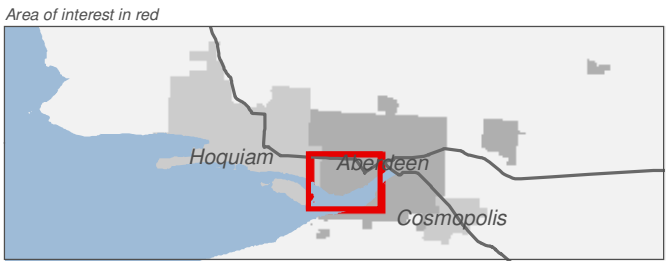
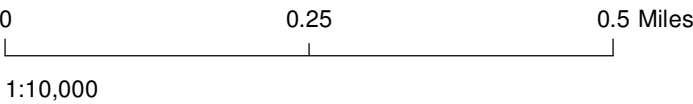
 Reaches

 City Boundary

 SMA Rivers

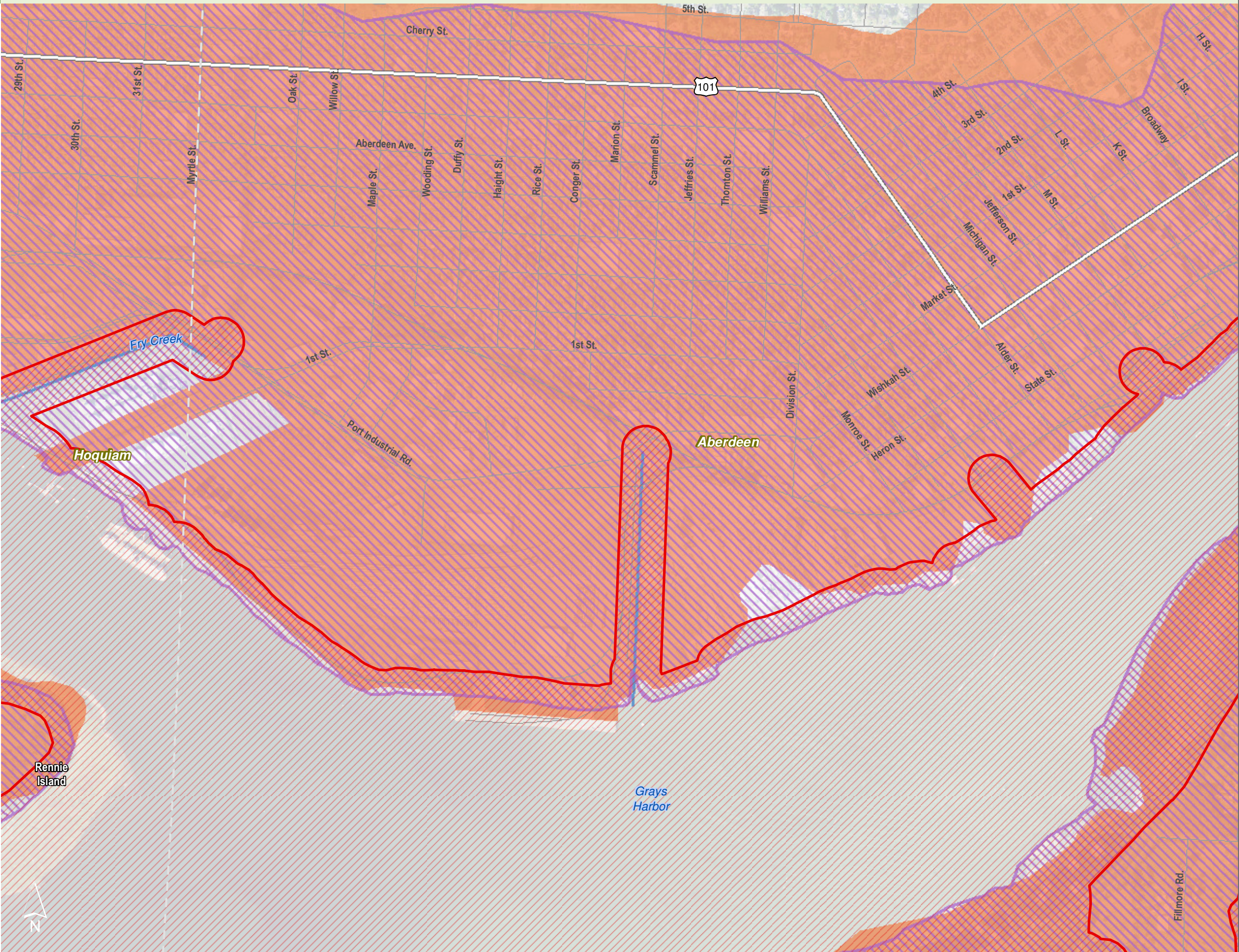
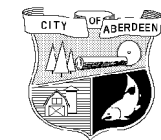
 SMA Lakes

 Highways



Source: Grays Harbor County, USFWS NWI (2011), FEMA Preliminary DFIRM (2013), WA DNR, WSDOT, DOE, NRCS NAIP (2013)

Shoreline jurisdiction boundaries depicted on this map are approximate. They have not been formally delineated or surveyed and are intended for planning purposes only. Additional site-specific evaluation may be needed to confirm/verify information shown on this map.






# Geological Hazards

Figure 15.23: Aberdeen


Date: 10/2/2014


**Tsunami Inundation**

 Cascadia Scenario 1A Seismic Event

**Liquefaction Susceptibility**

 Moderate to High

 Low to Moderate

 Preliminary Shoreline Jurisdiction

 Reaches

 City Boundary

 SMA Rivers

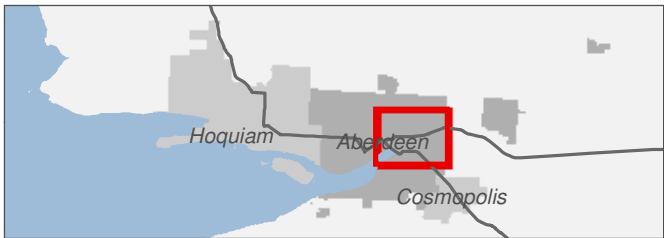
 SMA Lakes

 Highways

0 0.25 0.5 Miles

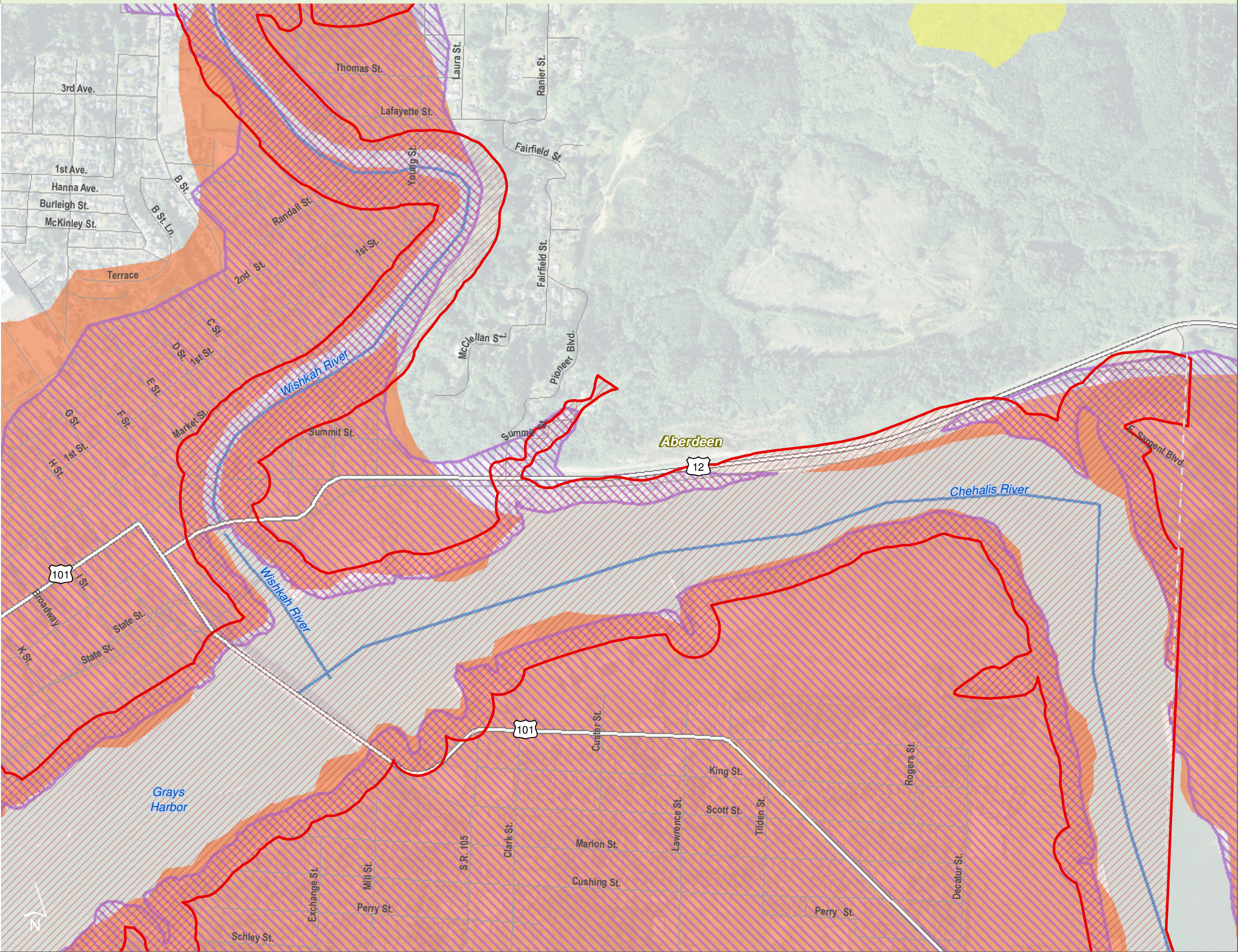
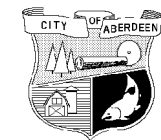
1:10,000

Area of interest in red



Source: Grays Harbor County, USFWS NWI (2011), FEMA Preliminary DFIRM (2013), WA DNR, WSDOT, DOE, NRCS NAIP (2013)

Shoreline jurisdiction boundaries depicted on this map are approximate. They have not been formally delineated or surveyed and are intended for planning purposes only. Additional site-specific evaluation may be needed to confirm/verify information shown on this map.



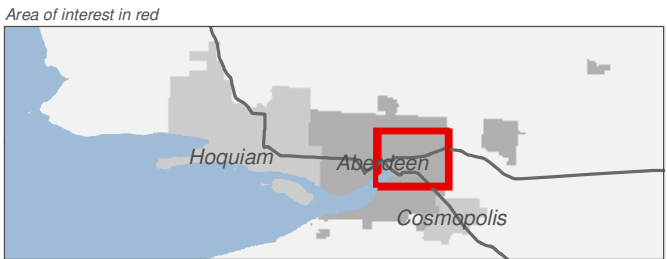
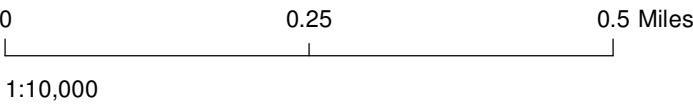


# Geological Hazards - Landslides

Figure 15.23: Aberdeen

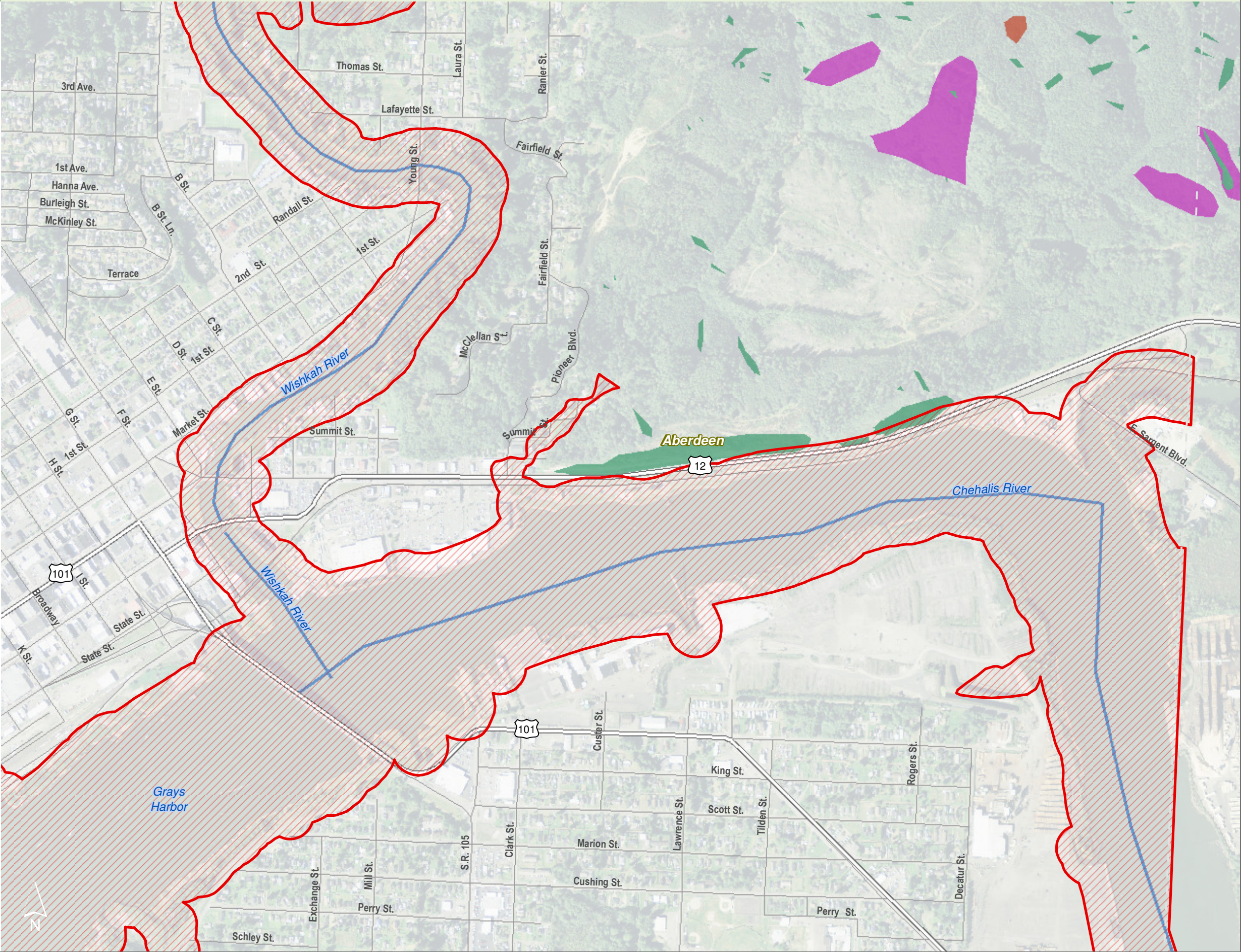
Date: 10/2/2014

- Landslides**
- Debris slide and avalanches
  - Deep-seated
  - Shallow undifferentiated
  - Preliminary Shoreline Jurisdiction
  - City Boundary
  - SMA Rivers
  - SMA Lakes
  - Highways



Source: Grays Harbor County, USFWS NWI (2011), FEMA Preliminary DFIRM (2013), WA DNR, WSDOT, DOE, NRCS NAIP (2013)

Shoreline jurisdiction boundaries depicted on this map are approximate. They have not been formally delineated or surveyed and are intended for planning purposes only. Additional site-specific evaluation may be needed to confirm/verify information shown on this map.






# Geological Hazards


Figure 15.24: Aberdeen


Date: 10/2/2014


**Tsunami Inundation**

 Cascadia Scenario 1A Seismic Event

**Liquefaction Susceptibility**

 Moderate to High

 Very Low to Low

 Preliminary Shoreline Jurisdiction

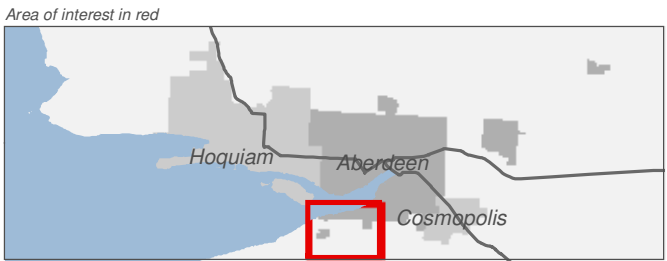
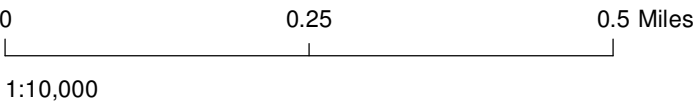
 Reaches

 City Boundary

 SMA Rivers

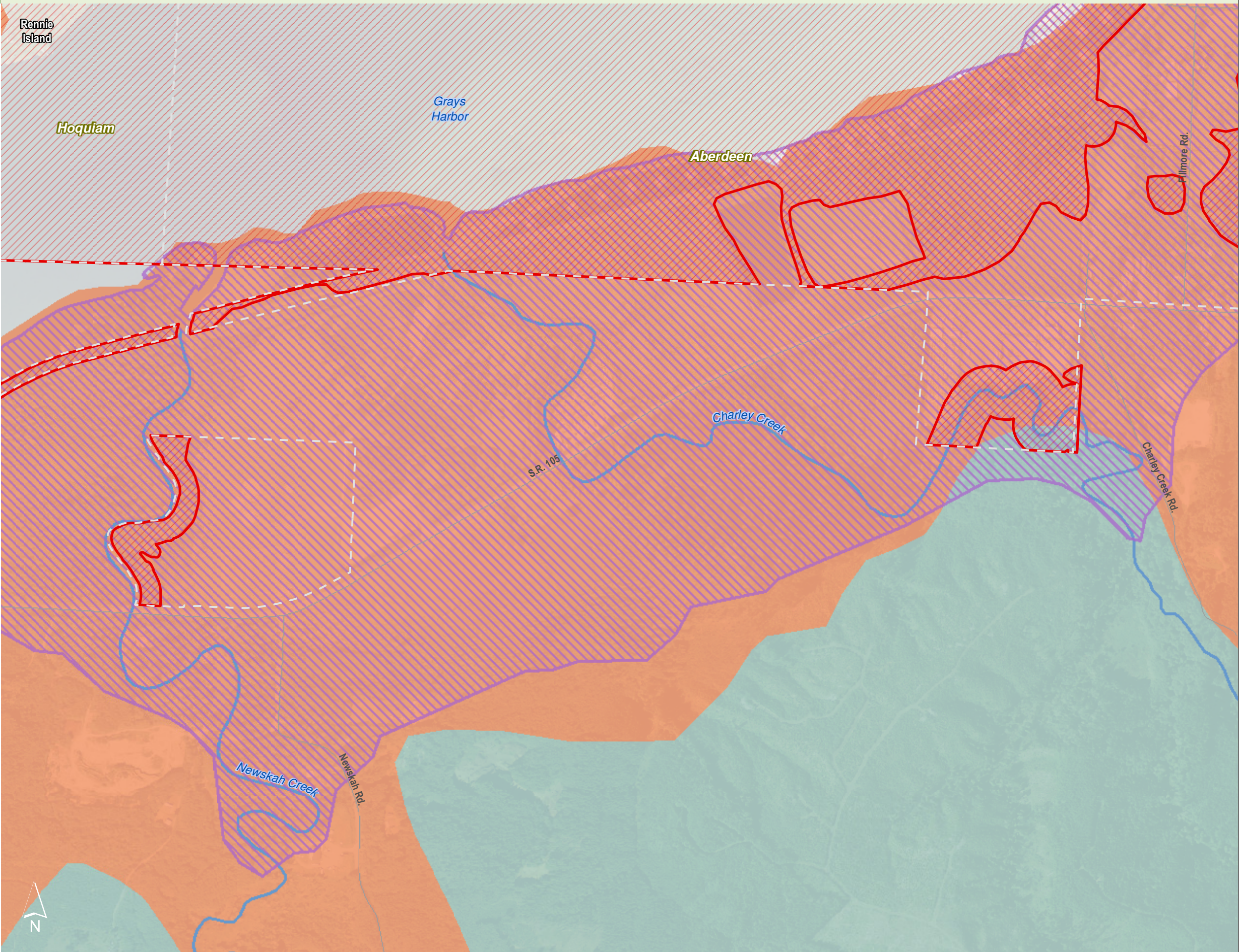
 SMA Lakes

 Highways



Source: Grays Harbor County, USFWS NWI (2011), FEMA Preliminary DFIRM (2013), WA DNR, WSDOT, DOE, NRCS NAIP (2013)

Shoreline jurisdiction boundaries depicted on this map are approximate. They have not been formally delineated or surveyed and are intended for planning purposes only. Additional site-specific evaluation may be needed to confirm/verify information shown on this map.






# Geological Hazards


Figure 15.25: Aberdeen


Date: 10/2/2014


**Tsunami Inundation**

 Cascadia Scenario 1A Seismic Event

**Liquefaction Susceptibility**

 Moderate to High

 Very Low to Low

 Preliminary Shoreline Jurisdiction

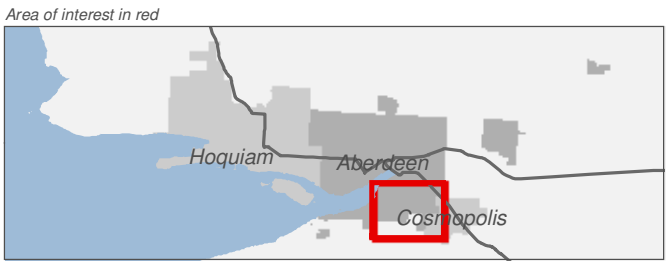
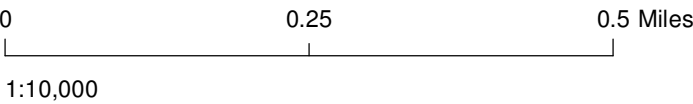
 Reaches

 City Boundary

 SMA Rivers

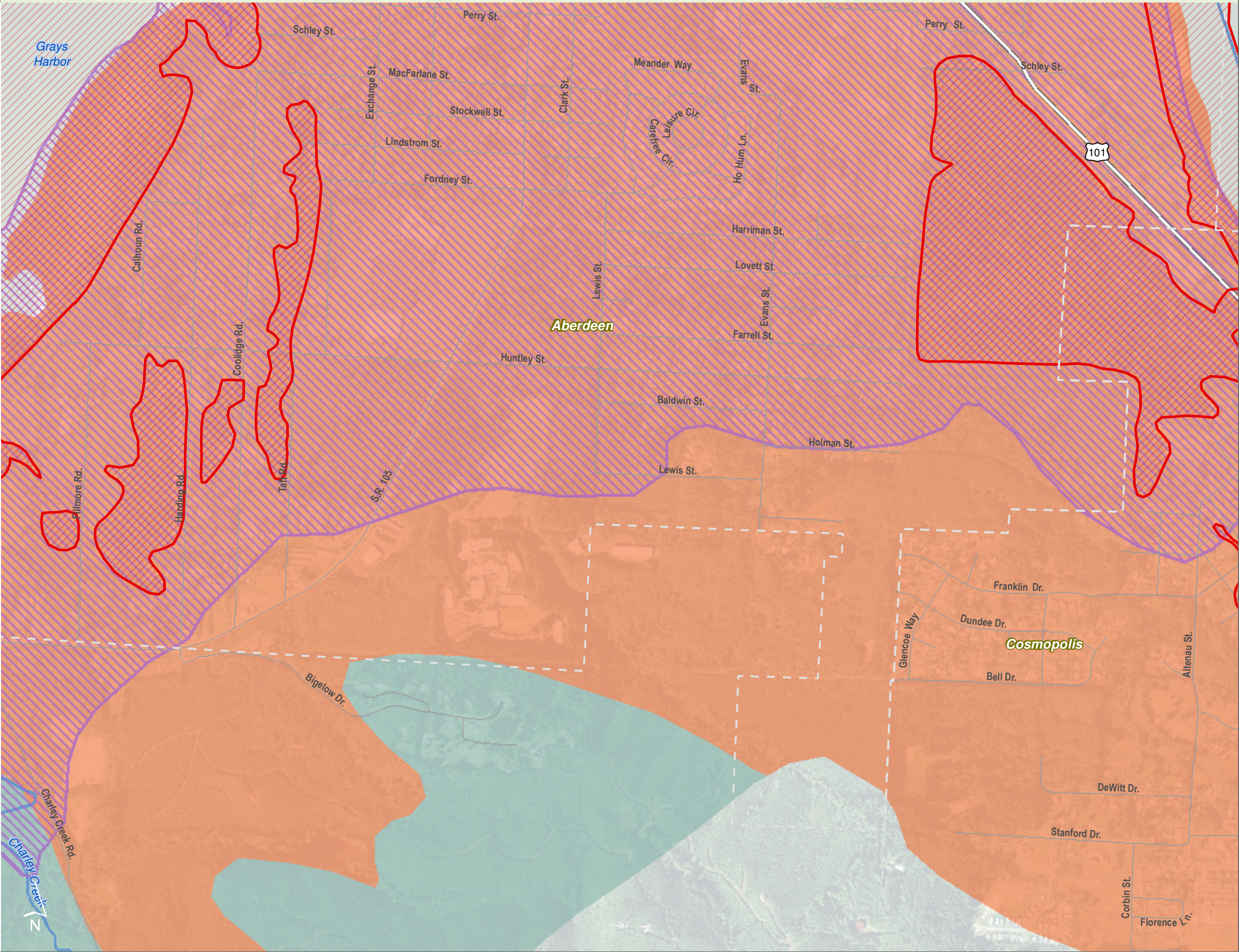
 SMA Lakes

 Highways



Source: Grays Harbor County, USFWS NWI (2011), FEMA Preliminary DFIRM (2013), WA DNR, WSDOT, DOE, NRCS NAIP (2013)

Shoreline jurisdiction boundaries depicted on this map are approximate. They have not been formally delineated or surveyed and are intended for planning purposes only. Additional site-specific evaluation may be needed to confirm/verify information shown on this map.






# Geological Hazards


Figure 15.3: Aberdeen

Date: 10/2/2014

**Tsunami Inundation**


 Cascadia Scenario 1A Seismic Event

**Liquefaction Susceptibility**

 Moderate to High

 Low

 Very Low

 Preliminary Shoreline Jurisdiction

 Reaches

 City Boundary

 SMA Rivers

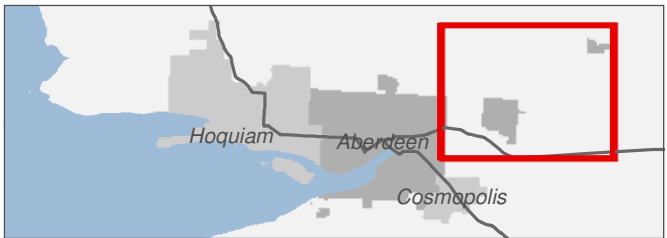
 SMA Lakes

 Highways

0 0.25 0.5 Miles

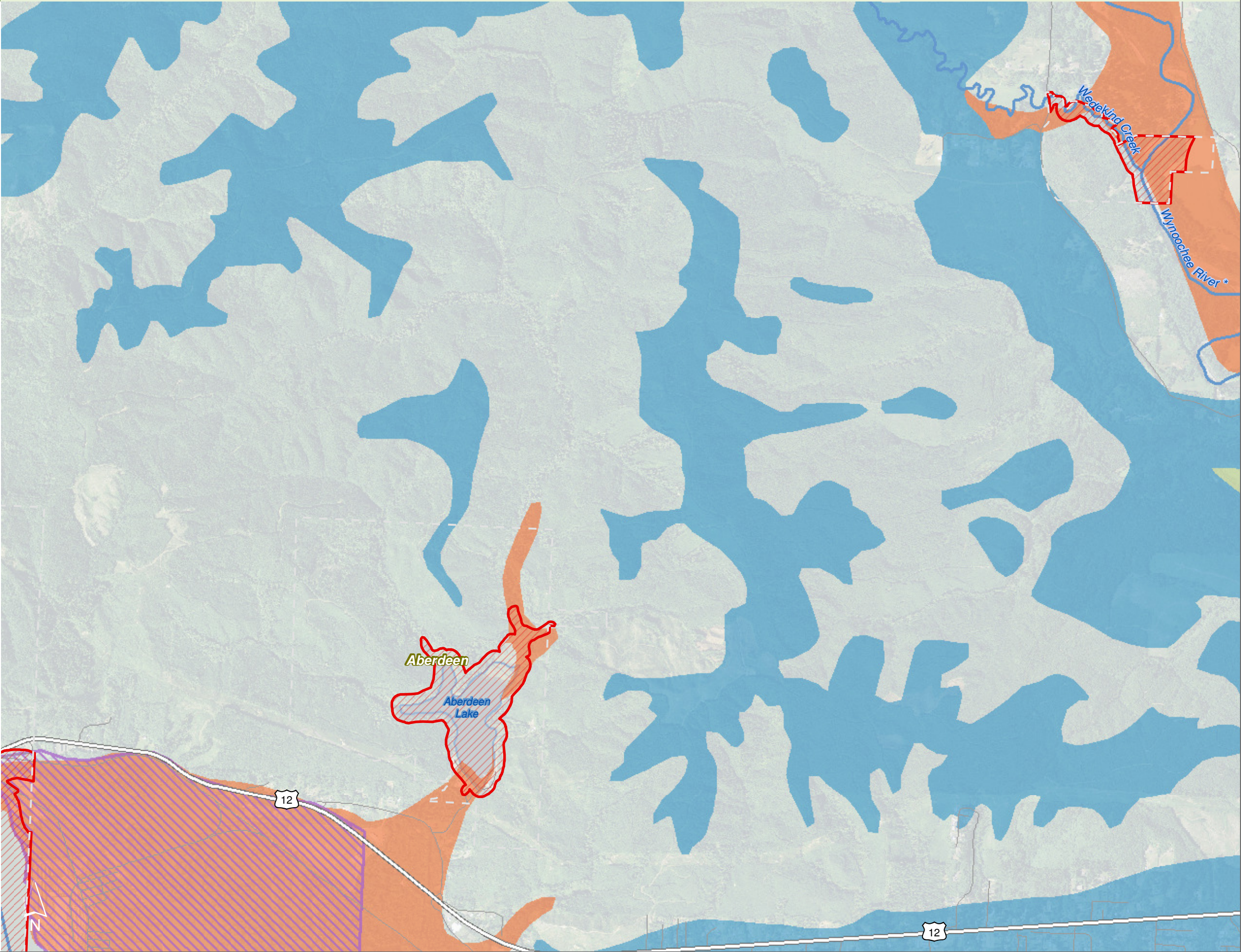
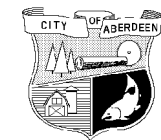
1:24,000

Area of interest in red



Source: Grays Harbor County, USFWS NWI (2011), FEMA Preliminary DFIRM (2013), WA DNR, WSDOT, DOE, NRCS NAIP (2013)

Shoreline jurisdiction boundaries depicted on this map are approximate. They have not been formally delineated or surveyed and are intended for planning purposes only. Additional site-specific evaluation may be needed to confirm/verify information shown on this map.





# Geological Hazards - Landslides

Figure 15.3: Aberdeen

Date: 10/2/2014

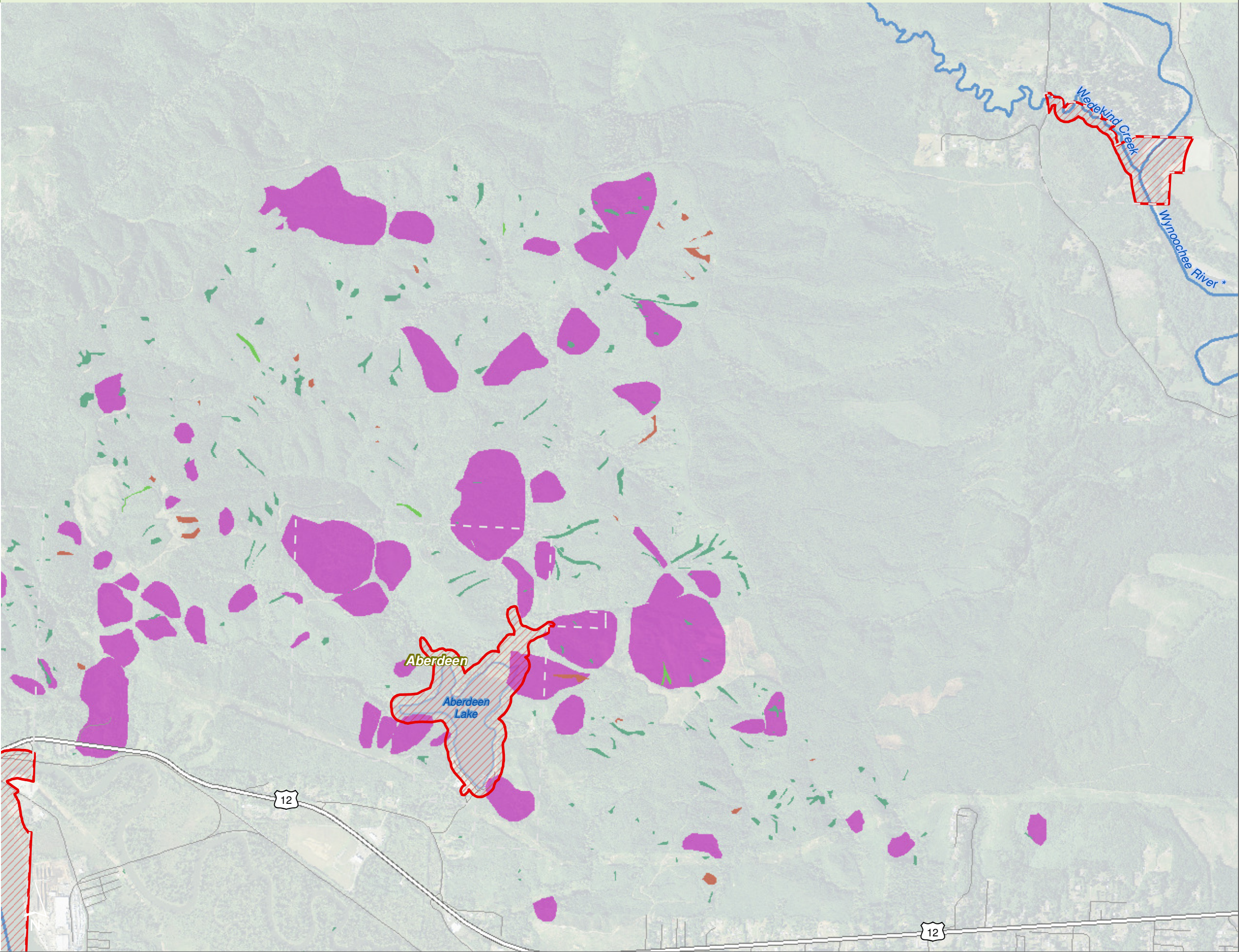
- Landslides**
- Debris flow
  - Debris slide and avalanches
  - Deep-seated
  - Shallow undifferentiated
  - Preliminary Shoreline Jurisdiction
  - City Boundary
  - SMA Rivers
  - SMA Lakes
  - Highways

0 0.25 0.5 Miles  
1:24,000



Source: Grays Harbor County, USFWS NWI (2011), FEMA Preliminary DFIRM (2013), WA DNR, WSDOT, DOE, NRCS NAIP (2013)

Shoreline jurisdiction boundaries depicted on this map are approximate. They have not been formally delineated or surveyed and are intended for planning purposes only. Additional site-specific evaluation may be needed to confirm/verify information shown on this map.






# Geological Hazards


Figure 15.31: Aberdeen

Date: 10/2/2014


**Tsunami Inundation**

 Cascadia Scenario 1A Seismic Event

**Liquefaction Susceptibility**

 Moderate to High

 Very Low

 Preliminary Shoreline Jurisdiction

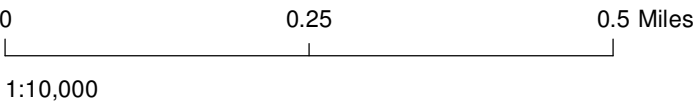
 Reaches

 City Boundary

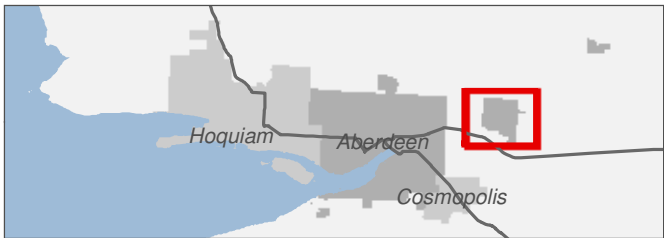
 SMA Rivers

 SMA Lakes

 Highways

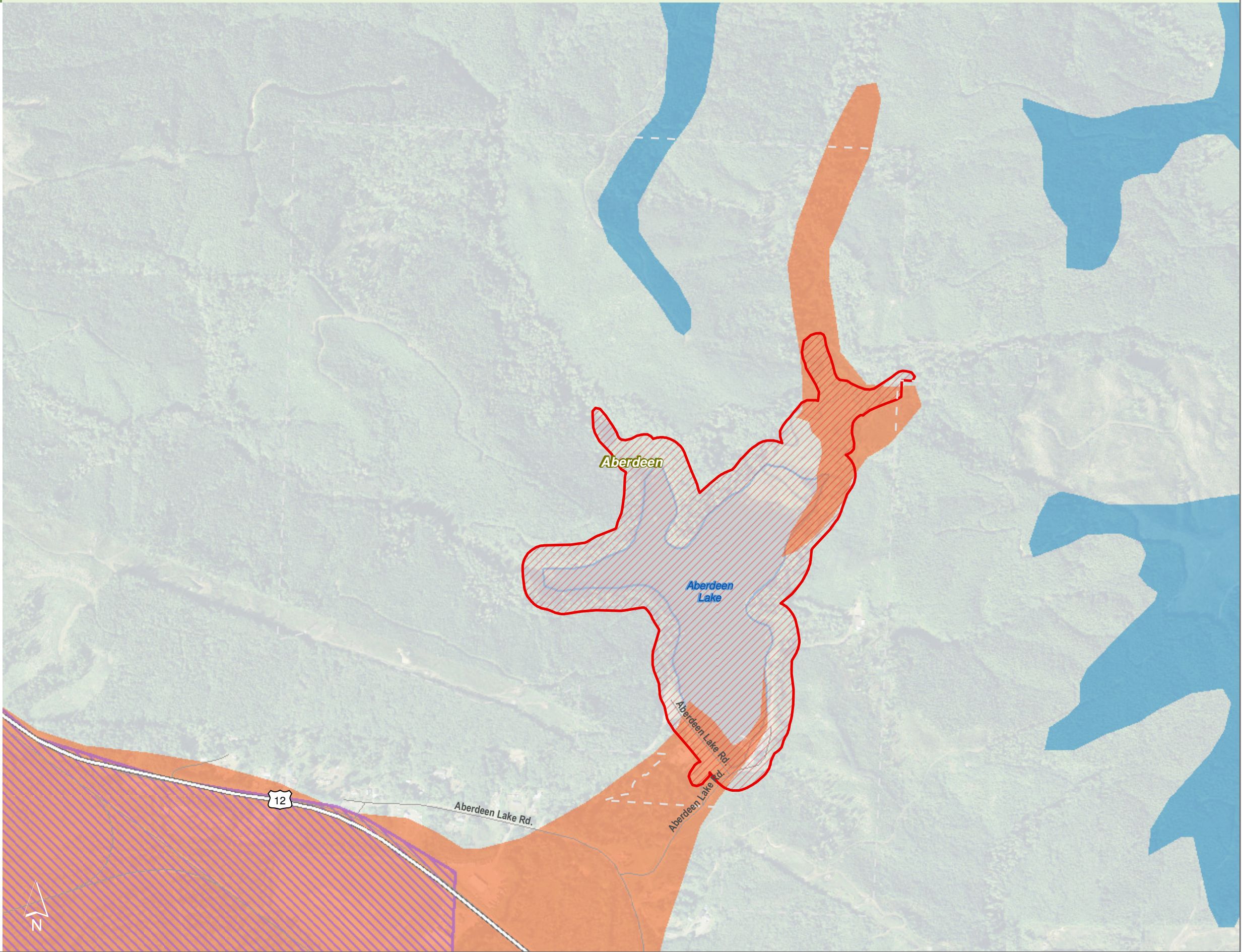


Area of interest in red



Source: Grays Harbor County, USFWS NWI (2011), FEMA Preliminary DFIRM (2013), WA DNR, WSDOT, DOE, NRCS NAIP (2013)

Shoreline jurisdiction boundaries depicted on this map are approximate. They have not been formally delineated or surveyed and are intended for planning purposes only. Additional site-specific evaluation may be needed to confirm/verify information shown on this map.



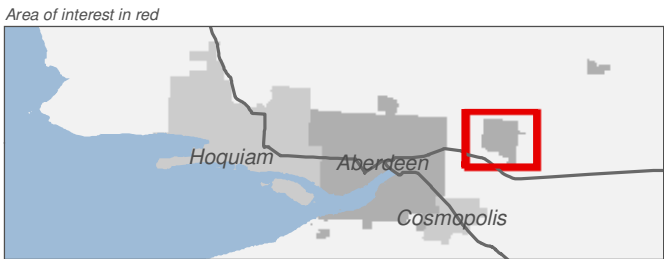
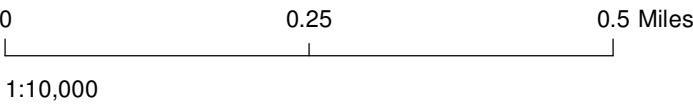


# Geological Hazards - Landslides

Figure 15.31: Aberdeen

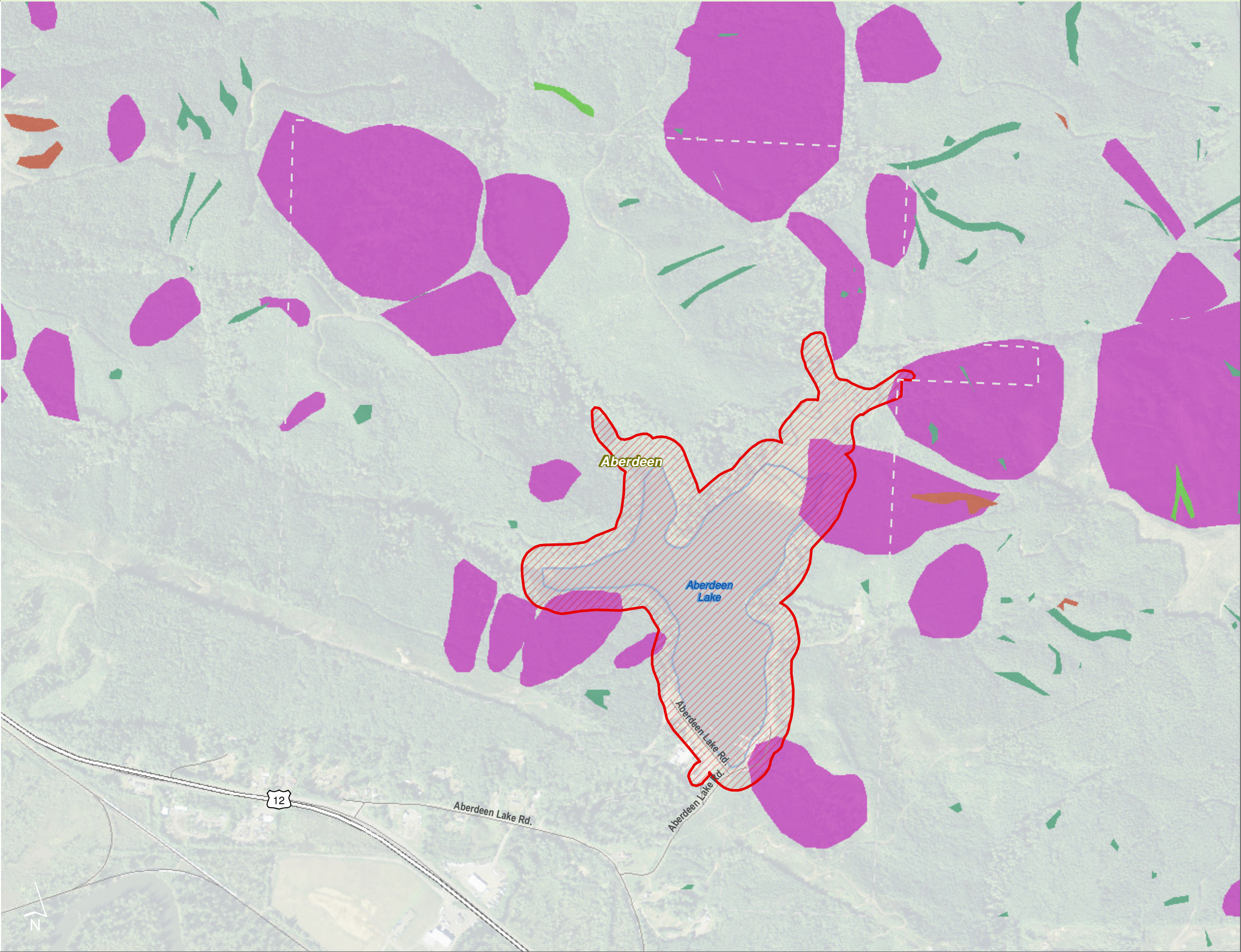
Date: 10/2/2014

- Landslides**
- Debris flow
  - Debris slide and avalanches
  - Deep-seated
  - Shallow undifferentiated
  - Preliminary Shoreline Jurisdiction
  - City Boundary
  - SMA Rivers
  - SMA Lakes
  - Highways



Source: Grays Harbor County, USFWS NWI (2011), FEMA Preliminary DFIRM (2013), WA DNR, WSDOT, DOE, NRCS NAIP (2013)

Shoreline jurisdiction boundaries depicted on this map are approximate. They have not been formally delineated or surveyed and are intended for planning purposes only. Additional site-specific evaluation may be needed to confirm/verify information shown on this map.





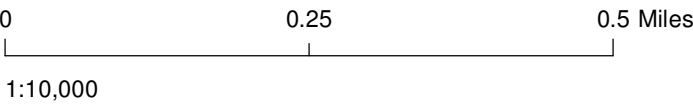
# Geological Hazards

Figure 15.32: Aberdeen

Date: 10/2/2014

**Liquefaction Susceptibility**

- Moderate to High
- Very Low
- Preliminary Shoreline Jurisdiction
- Reaches
- City Boundary
- SMA Rivers
- SMA Lakes
- Highways



Source: Grays Harbor County, USFWS NWI (2011), FEMA Preliminary DFIRM (2013), WA DNR, WSDOT, DOE, NRCS NAIP (2013)

Shoreline jurisdiction boundaries depicted on this map are approximate. They have not been formally delineated or surveyed and are intended for planning purposes only. Additional site-specific evaluation may be needed to confirm/verify information shown on this map.

