

List of Figures

Figure 1: Shoreline Jurisdiction

Figure 2: 100 Year Floodplain & Wetlands

Figure 3: Soils

Figure 4: Land Cover

Figure 5: Shoreline Modification

Figure 6: Water Quality 303(d) Listed Waterbodies

Figure 7: Shoreline Barriers

Figure 8: WDFW Priority Habitat Fish Species

Figure 9: Reaches

Figure 10: WDFW Priority Habitat Wildlife

Figure 11: Nearshore Vegetation

Figure 12: Public Land

Figure 13: Contaminated Sites

Figure 14: Zoning

Figure 15: Geological Hazards

Figure 16: Public Access

Figure 17: Preliminary Shoreline Environment Designations

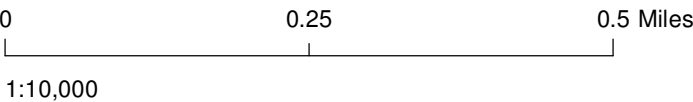


Shoreline Jurisdiction

Figure 1.4: Cosmopolis

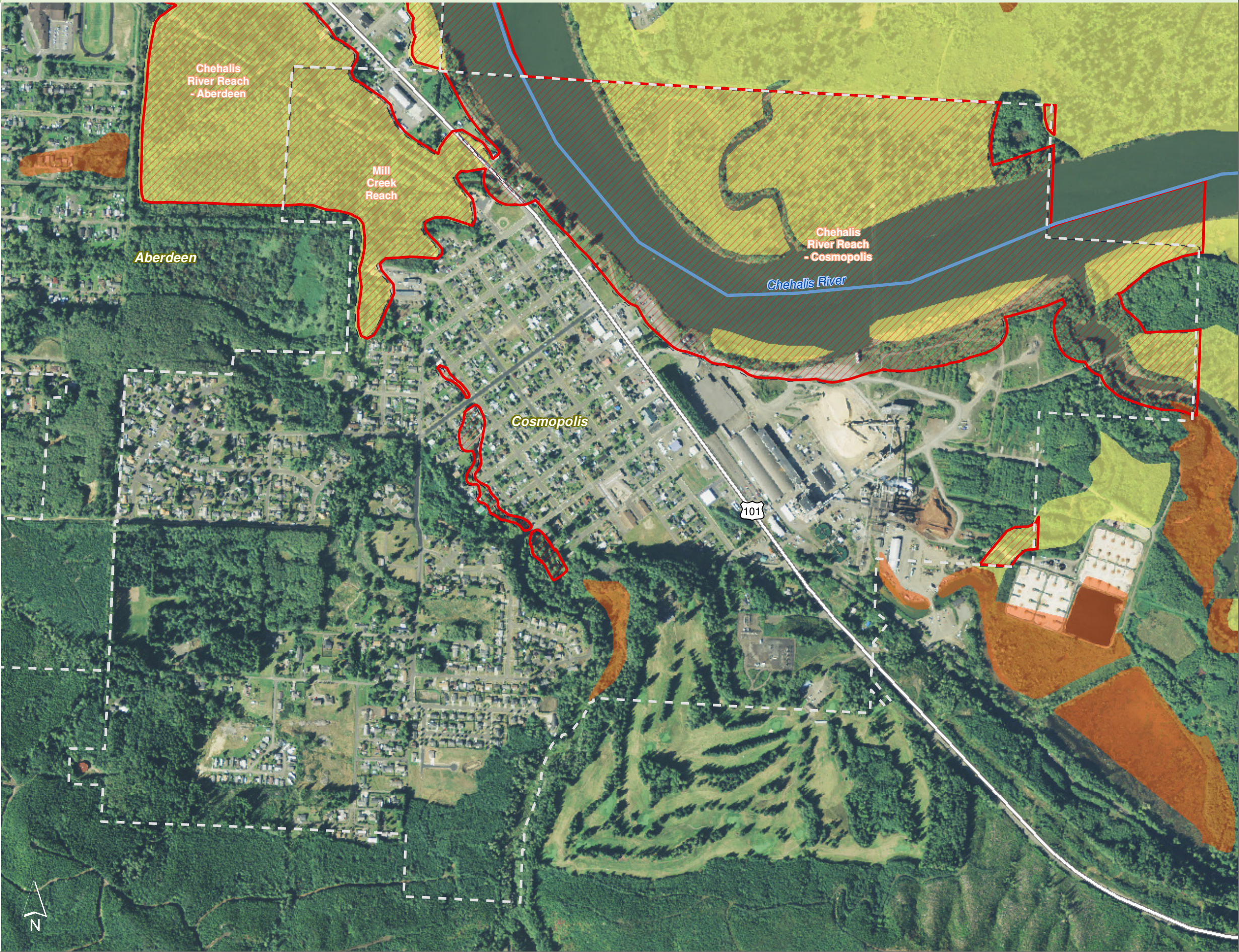
Date: 10/2/2014

-  Preliminary Shoreline Jurisdiction
-  Reaches
-  City Boundary
-  Associated NWI Wetland
-  Potentially Associated NWI Wetland
-  SMA Rivers
-  SMA Lakes
-  Highways



Source: Grays Harbor County, USFWS NWI (2011), FEMA Preliminary DFIRM (2013), WA DNR, WSDOT, DOE, NRCS NAIP (2013)

Shoreline jurisdiction boundaries depicted on this map are approximate. They have not been formally delineated or surveyed and are intended for planning purposes only. Additional site-specific evaluation may be needed to confirm/verify information shown on this map.



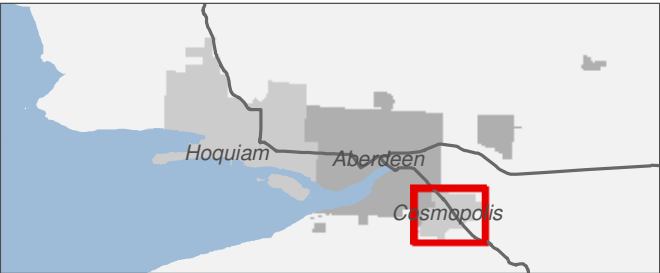
Floodway, Floodplain, and Wetlands

Figure 2.4: Cosmopolis

Date: 10/2/2014

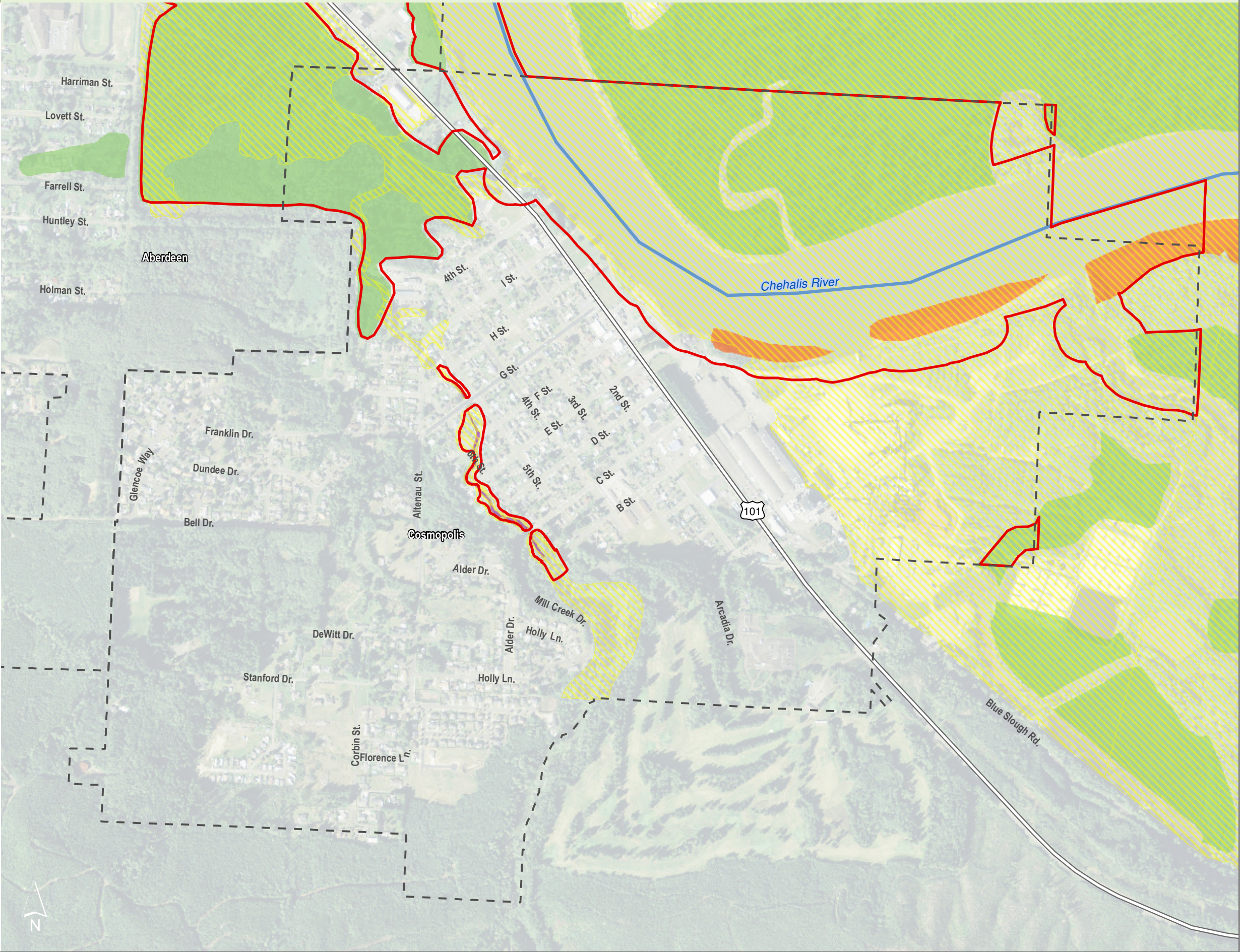
- Preliminary Shoreline Jurisdiction
- City Boundary
- FEMA Preliminary DFIRM**
 - Floodway
 - 100-Year Floodplain
- NWI Wetland by Type**
 - Estuarine and Marine Wetland
 - Freshwater Forested/Shrub Wetland
- SMA Rivers
- SMA Lakes
- Highways

0 0.25 0.5 Miles
1:10,000
Area of interest in red



Source: Grays Harbor County, USFWS NWI (2011), FEMA Preliminary DFIRM (2013), WA DNR, WSDOT, DOE, NRCS NAIP (2013)

Shoreline jurisdiction boundaries depicted on this map are approximate. They have not been formally delineated or surveyed and are intended for planning purposes only. Additional site-specific evaluation may be needed to confirm/verify information shown on this map.



Soils

Figure 3.4: Cosmopolis

Date: 10/2/2014

Preliminary Shoreline Jurisdiction

Reaches

City Boundary

SMA Rivers

SMA Lakes

Highways

Other Soils

Calawah silt loam

Ilwaco silt loam

Mopang silt loam

Narel silt loam

Udorthents, level

Hydric Soils

Fluvaquents, tidal

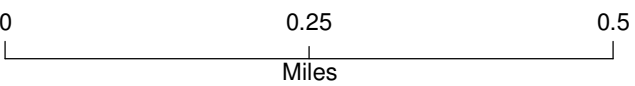
Ocosta silty clay loam

Orcas peat

Palix silt loam

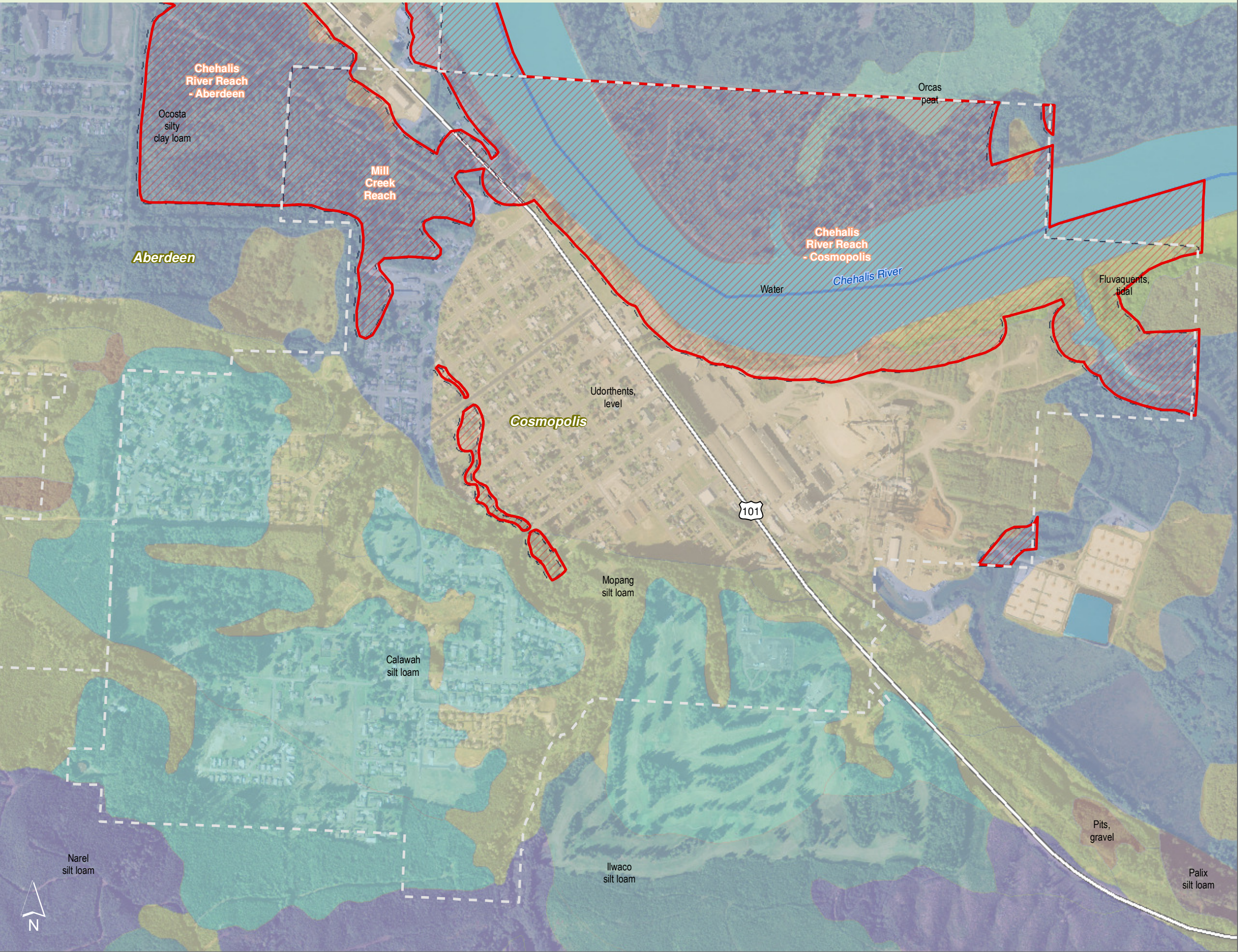
Pits, gravel

Water



Source: Grays Harbor County, USFWS NWI (2011), FEMA Preliminary DFIRM (2013), DNR, WSDOT, Ecology, NRCS NAIP

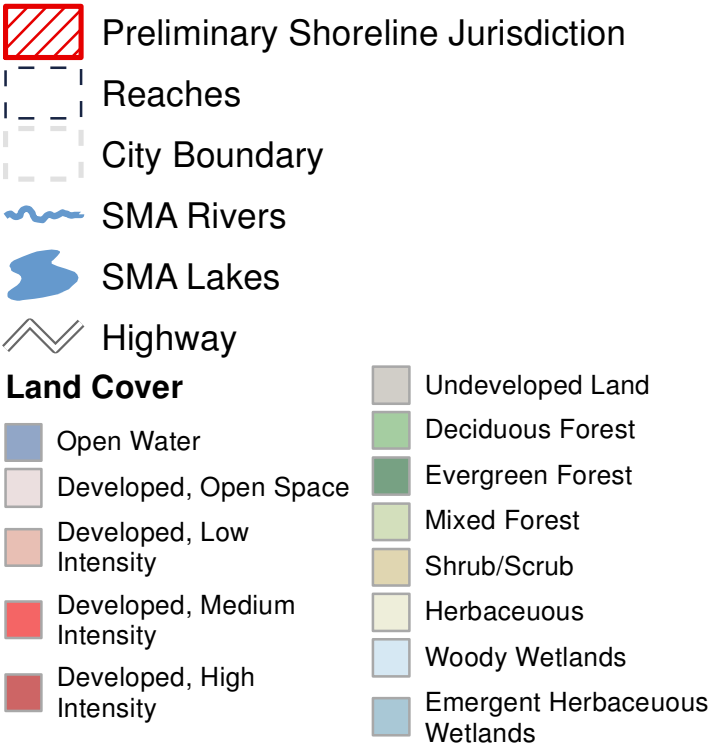
Shoreline jurisdiction boundaries depicted on this map are approximate. They have not been formally delineated or surveyed and are intended for planning purposes only. Additional site-specific evaluation may be needed to confirm/verify information shown on this map.



Land Cover

Figure 4.4: Cosmopolis

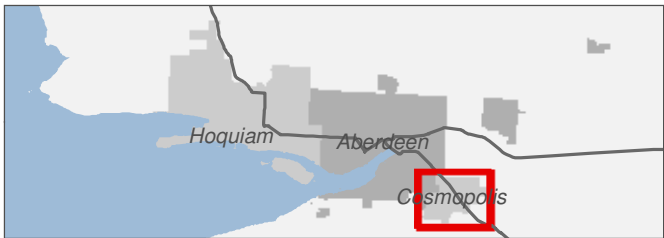
Date: 10/2/2014



0 0.25 0.5 Miles

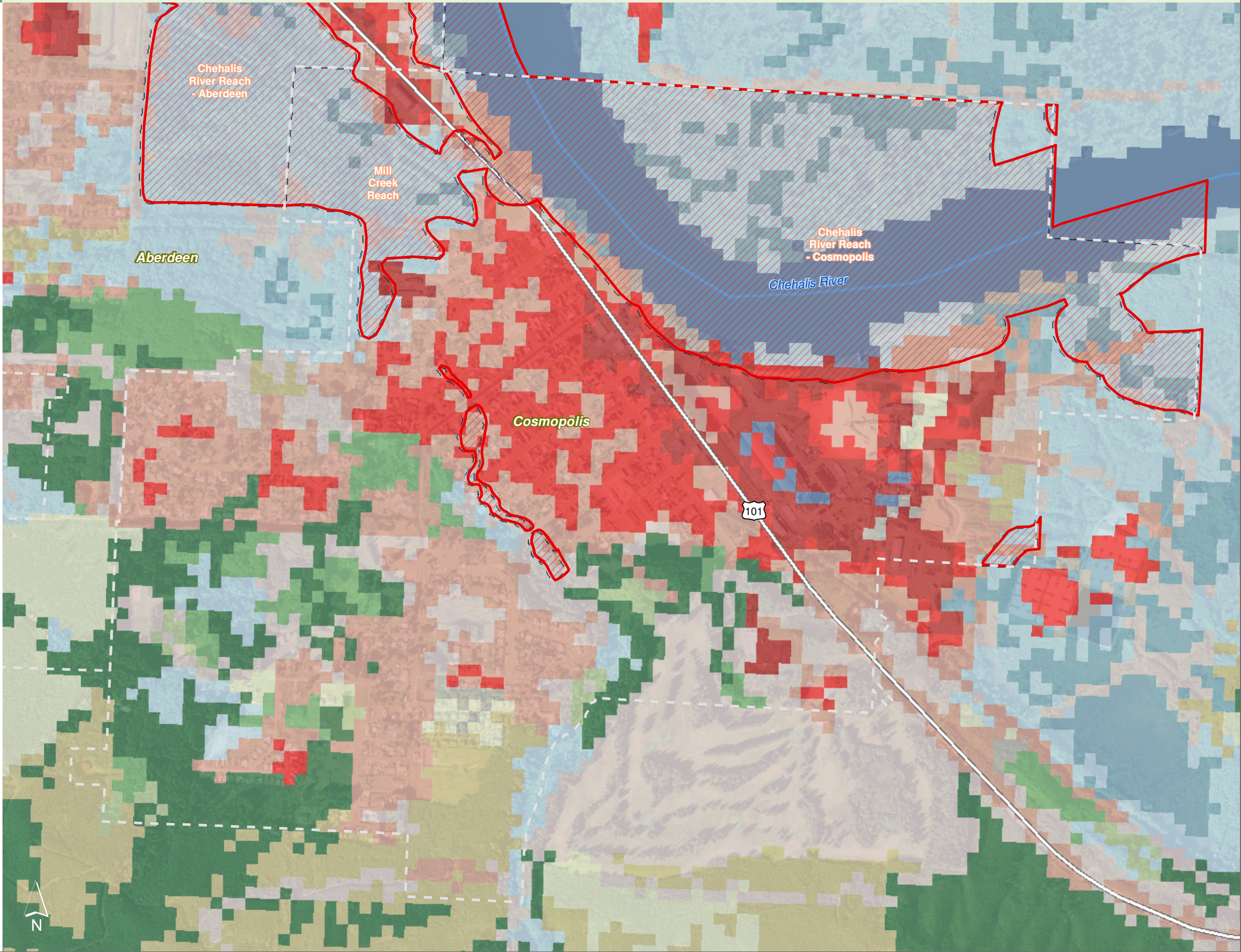
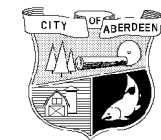
1:10,000

Area of interest in red



Source: USGS NLCD (2006), Grays Harbor Co., GHCG, USFWS NWI, FEMA, WA DNR, WSDOT, DOE, NRCS NAIP

Shoreline jurisdiction boundaries depicted on this map are approximate. They have not been formally delineated or surveyed and are intended for planning purposes only. Additional site-specific evaluation may be needed to confirm/verify information shown on this map.



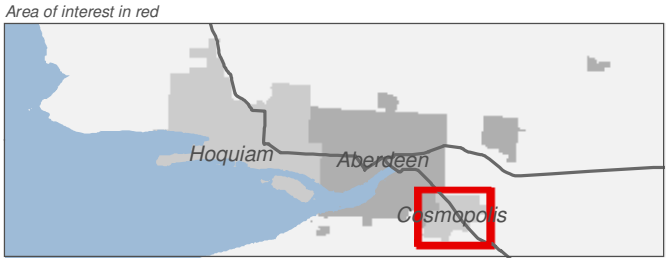
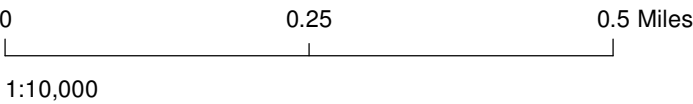
Shoreline Modification

Figure 5.4: Cosmopolis

Date: 10/2/2014

Shoreline Modified

- Armored
- Over Water Structure
- Levees
- Dams
- Preliminary Shoreline Jurisdiction
- Reaches
- City Boundary
- SMA Rivers
- SMA Lakes
- Highways



Source: Grays Harbor County, USFWS NWI (2011), FEMA Preliminary DFIRM (2013), WA DNR, WSDOT, DOE, NRCS NAIP (2013)







Shoreline jurisdiction boundaries depicted on this map are approximate. They have not been formally delineated or surveyed and are intended for planning purposes only. Additional site-specific evaluation may be needed to confirm/verify information shown on this map.



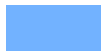





Water Quality 303(d) Listed Waterbodies

Figure 6.4: Cosmopolis

Date: 10/2/2014

-  Preliminary Shoreline Jurisdiction
-  Reaches
-  City Boundary
-  SMA Rivers
-  SMA Lakes
-  Highway

303d Waterbodies by Category

	1		4A		4C
	2		4B		5

- 303d Categories:
- Category 1: Meets tested standards
 - Category 2: Waters of concern
 - Category 4: Polluted waters that do not require a TMDL
 - 4a: Approved TMDL control plan in place
 - 4b: Approved pollution control plan in place
 - 4c: Cause cannot be addressed through TMDL
 - Category 5: Polluted waters that require a TMDL

0 0.25 0.5 Miles

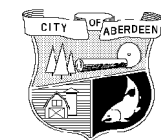
1:10,000

Area of interest in red



Source: Grays Harbor County, USFWS NWI (2011), FEMA Preliminary DFIRM (2013), DNR, WSDOT, Ecology, NRCS NAIP

Shoreline jurisdiction boundaries depicted on this map are approximate. They have not been formally delineated or surveyed and are intended for planning purposes only. Additional site-specific evaluation may be needed to confirm/verify information shown on this map.



Surface Water System

Figure 7.4: Cosmopolis

Date: 10/2/2014

- Preliminary Shoreline Jurisdiction
- Reaches
- City Boundary
- SMA Lakes
- SMA Rivers
- Highways

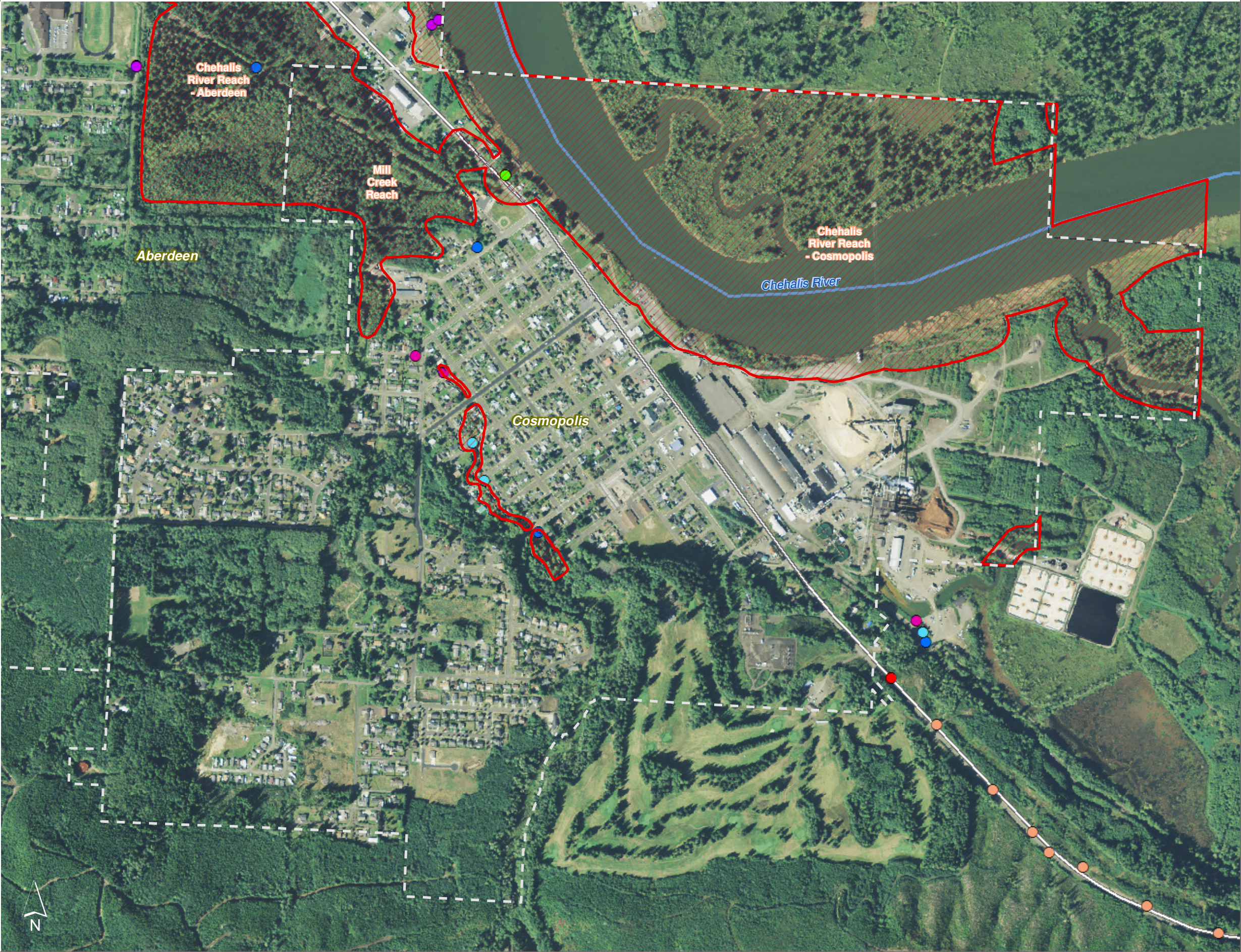
- Road Crossing - Blockage Type**
- N/A
 - None
 - Partial
 - Total
 - Unknown
- Tide Gates**
- City of Aberdeen
 - City of Hoquiam
 - Tide Gate per WDFW

0 0.25 0.5 Miles



Source: Grays Harbor County, USFWS NWI, FEMA, WA DNR, WSDOT, DOE, NRCS NAIP

Shoreline jurisdiction boundaries depicted on this map are approximate. They have not been formally delineated or surveyed and are intended for planning purposes only. Additional site-specific evaluation may be needed to confirm/verify information shown on this map.



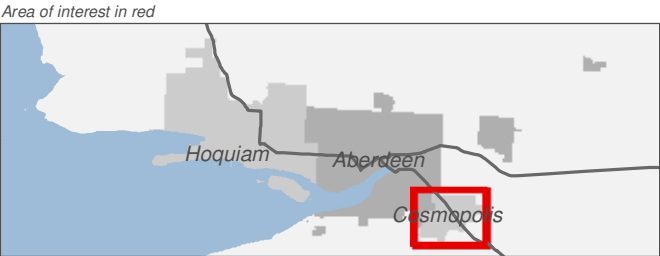
WDFW Priority Habitat Fish Species

Figure 8.4: Cosmopolis

Date: 10/2/2014

-  Preliminary Shoreline Jurisdiction
-  Reaches
-  City Boundary
-  SMA Rivers
-  SMA Lakes
-  Highways
- Fish Species Present

0 0.25 0.5 Miles
1:10,000



Source: Grays Harbor County, USFWS NWI (2011), FEMA Preliminary DFIRM (2013), WA DNR, WSDOT, DOE, NRCS NAIP (2013)






Shoreline jurisdiction boundaries depicted on this map are approximate. They have not been formally delineated or surveyed and are intended for planning purposes only. Additional site-specific evaluation may be needed to confirm/verify information shown on this map.



Shoreline Reaches

Figure 9.4: Cosmopolis

Date: 10/2/2014

-  Preliminary Shoreline Jurisdiction
-  City Boundary
-  SMA Rivers
-  SMA Lakes
-  Highways

Shoreline Reach

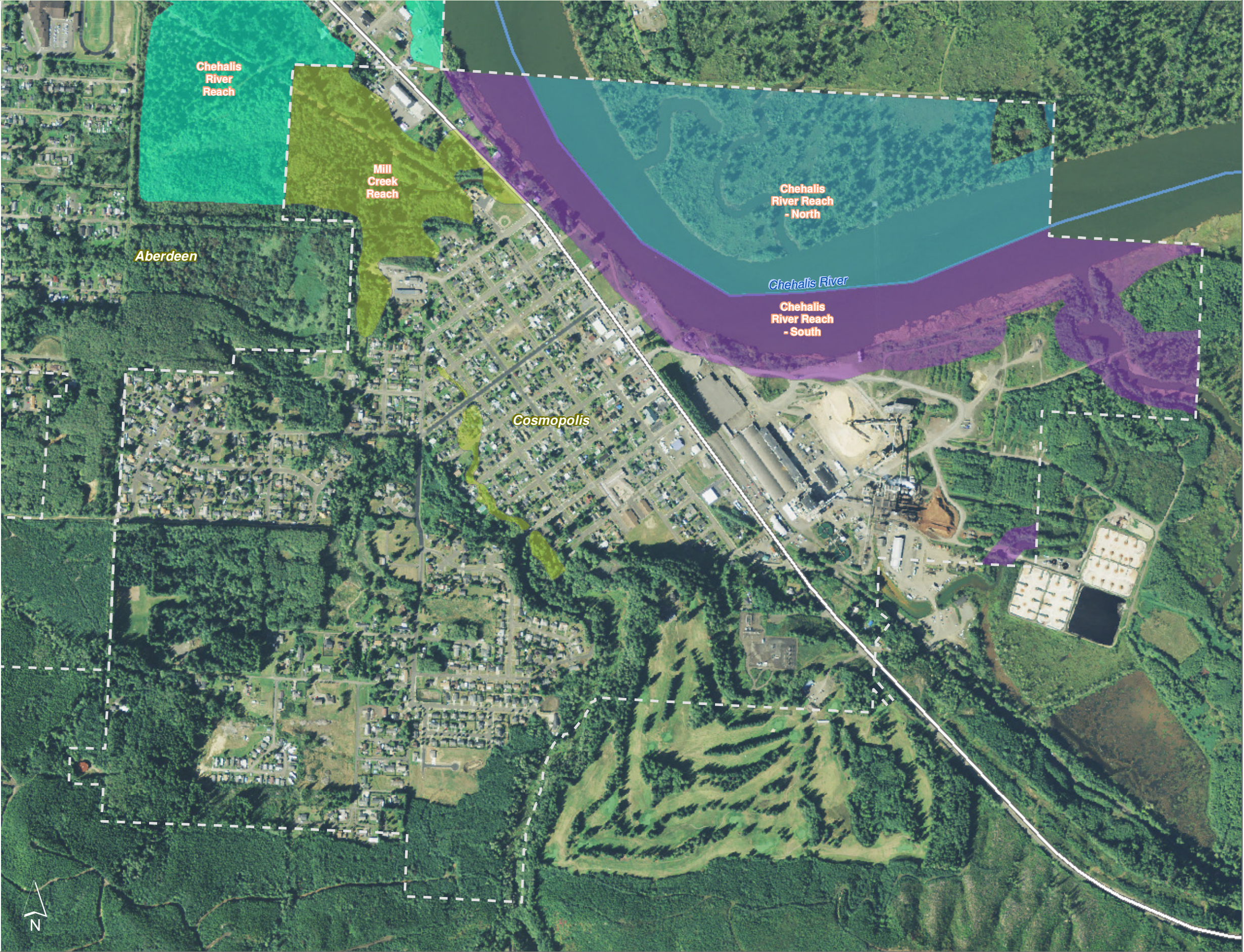
- Cosmopolis**
-  Chehalis River Reach - North
 -  Chehalis River Reach - South
 -  Mill Creek Reach
- Aberdeen**
-  Chehalis River Reach

0 0.25 0.5 Miles



Source: Grays Harbor County, USFWS NWI (2011), FEMA Preliminary DFIRM (2013), WA DNR, WSDOT, DOE, NRCS NAIP (2013)







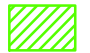
Shoreline jurisdiction boundaries depicted on this map are approximate. They have not been formally delineated or surveyed and are intended for planning purposes only. Additional site-specific evaluation may be needed to confirm/verify information shown on this map.



WDFW Priority Habitat Wildlife

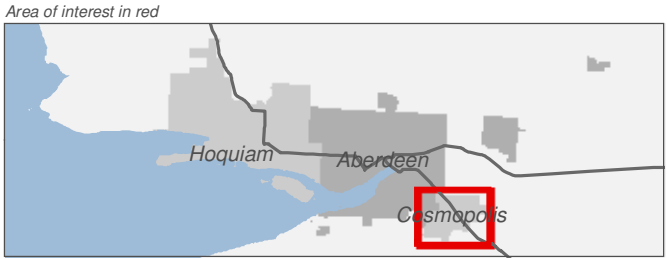
Figure 10.4: Cosmopolis

Date: 10/2/2014

-  Preliminary Jurisdiction
-  Reaches
-  City Boundary
-  SMA Rivers
-  SMA Lakes
-  Highways
-  Wood Duck

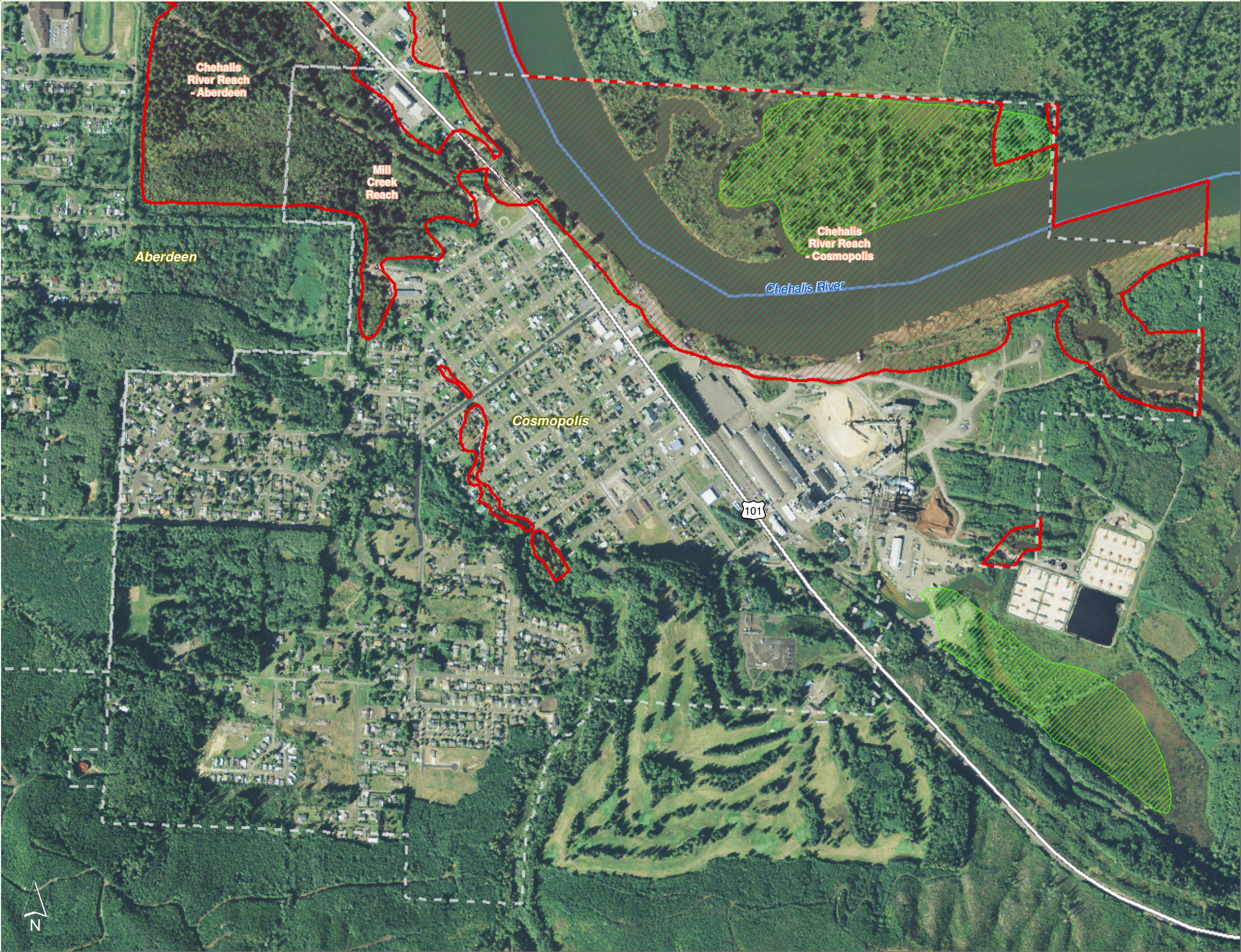
0 0.25 0.5 Miles

1:10,000



Source: Grays Harbor County, USFWS NWI (2011), FEMA Preliminary DFIRM (2013), WA DNR, WSDOT, DOE, NRCS NAIP (2013)

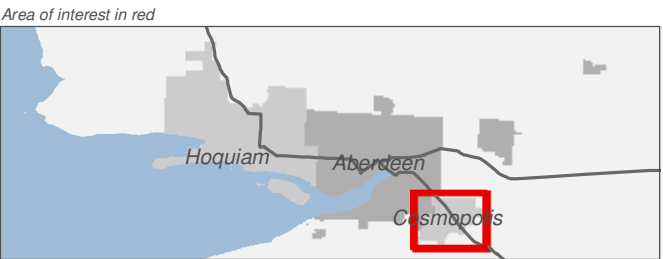
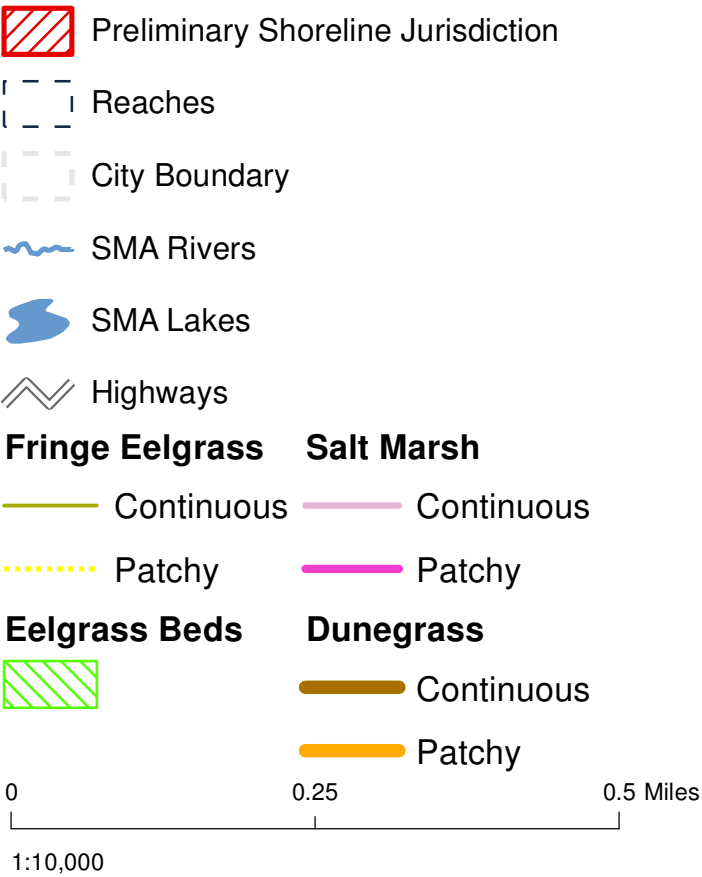
Shoreline jurisdiction boundaries depicted on this map are approximate. They have not been formally delineated or surveyed and are intended for planning purposes only. Additional site-specific evaluation may be needed to confirm/verify information shown on this map.



Nearshore Vegetation

Figure 11.4: Cosmopolis

Date: 10/2/2014



Source: Grays Harbor County, USFWS NWI (2011), FEMA Preliminary DFIRM (2013), WA DNR, WSDOT, DOE, NRCS NAIP (2013)

Shoreline jurisdiction boundaries depicted on this map are approximate. They have not been formally delineated or surveyed and are intended for planning purposes only. Additional site-specific evaluation may be needed to confirm/verify information shown on this map.



Public Land

Figure 12.4: Cosmopolis

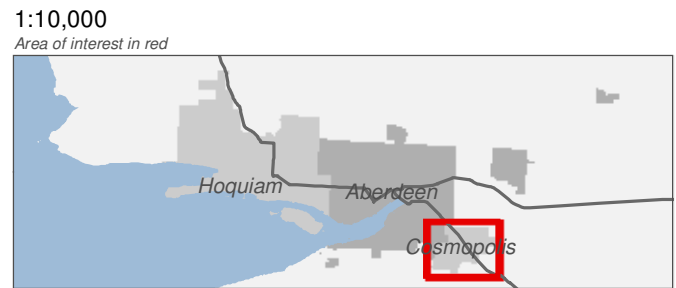
Date: 10/2/2014

- Preliminary Shoreline Jurisdiction
- Reaches
- City Boundary
- SMA Rivers
- SMA Lakes
- Highways

Public Land

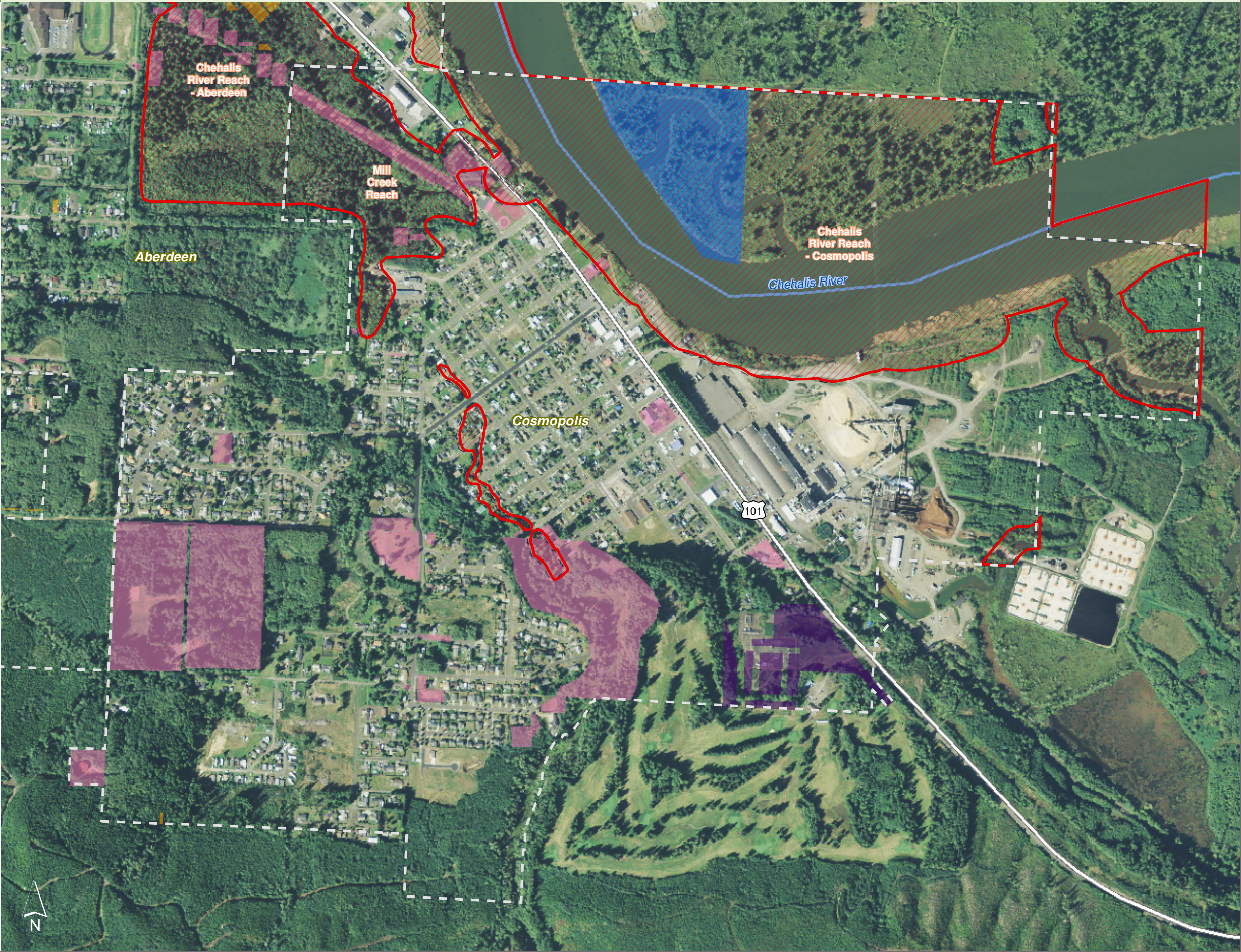
- Federal Government
- Grays Harbor County
- Municipal
- Port of Grays Harbor
- Washington DNR
- State of Washington

0 0.25 0.5 Miles



Source: Grays Harbor County, USFWS NWI (2011), FEMA Preliminary DFIRM (2013), DNR, WSDOT, Ecology, NRCS NAIP

Shoreline jurisdiction boundaries depicted on this map are approximate. They have not been formally delineated or surveyed and are intended for planning purposes only. Additional site-specific evaluation may be needed to confirm/verify information shown on this map.



Contaminated Sites

Figure 13.4: Cosmopolis

Date: 10/2/2014

- Preliminary Shoreline Jurisdiction
- Reaches
- City Boundary
- SMA Rivers
- SMA Lakes
- Highways

TankStatus

- Operational

Contaminated Sites

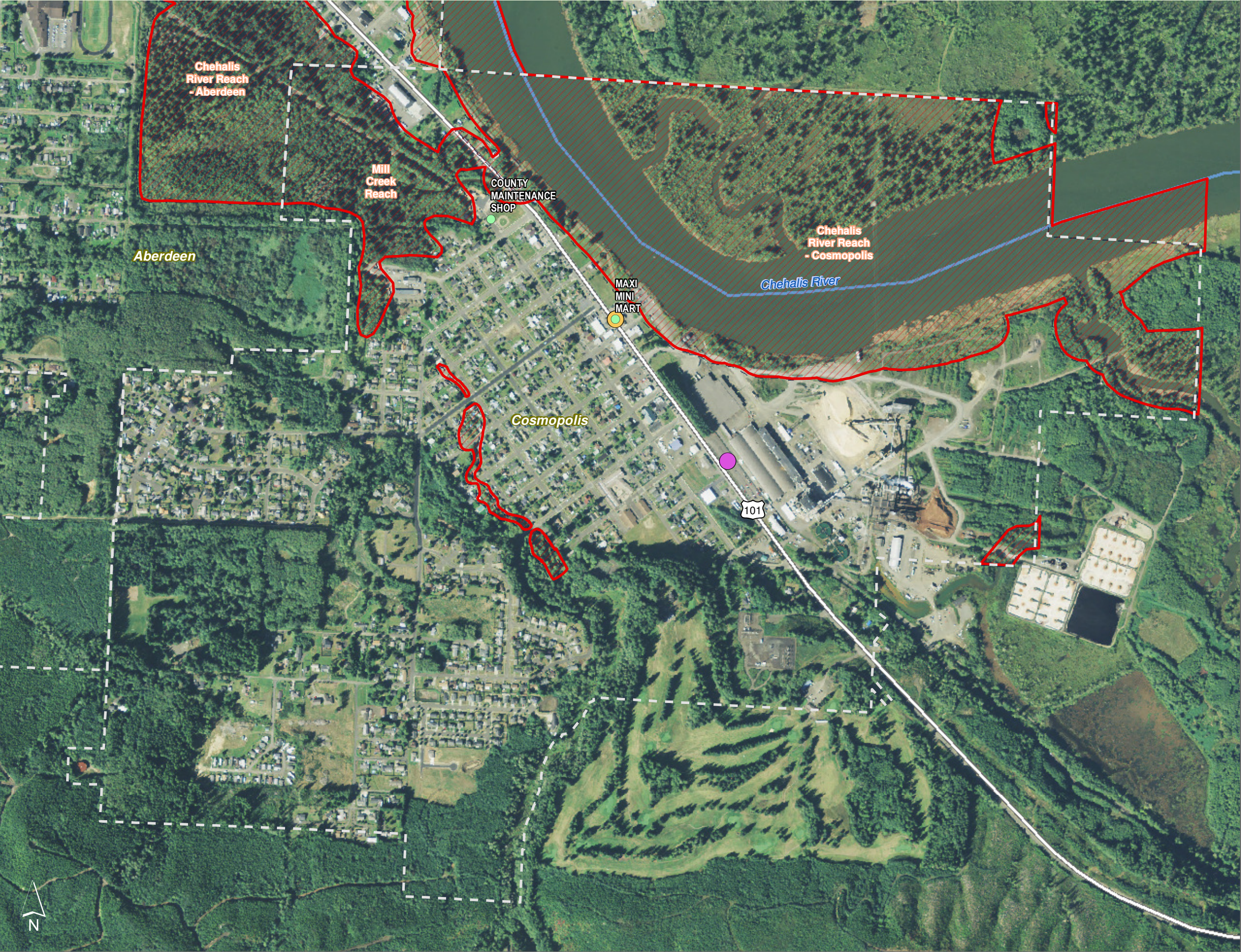
- Awaiting Cleanup
- Cleanup Started
- Construction Complete-Performance Monitoring

0 0.25 0.5 Miles



Source: Grays Harbor County, USFWS NWI (2011), FEMA Preliminary DFIRM (2013), DNR, WSDOT, Ecology, NRCS NAIP

Shoreline jurisdiction boundaries depicted on this map are approximate. They have not been formally delineated or surveyed and are intended for planning purposes only. Additional site-specific evaluation may be needed to confirm/verify information shown on this map.



Zoning

Figure 14.4: Cosmopolis

Date: 10/2/2014

- Preliminary Shoreline Jurisdiction
- Reaches
- City Boundary
- SMA Rivers
- SMA Lakes
- Highways

- City of Aberdeen Zoning**
- CR - Commercial/Residential
 - I - Industrial
 - RM - Multiple Family Residential
 - RS - Single Family Residential

- City of Cosmopolis Zoning Districts**
- M - Manufacturing
 - MU - Mixed Use
 - PR - Public Reserve
 - R100 - Residential (Low Density)
 - R57 - Residential (Medium Density)
 - WA - Waterfront Use

0 0.25 0.5 Miles

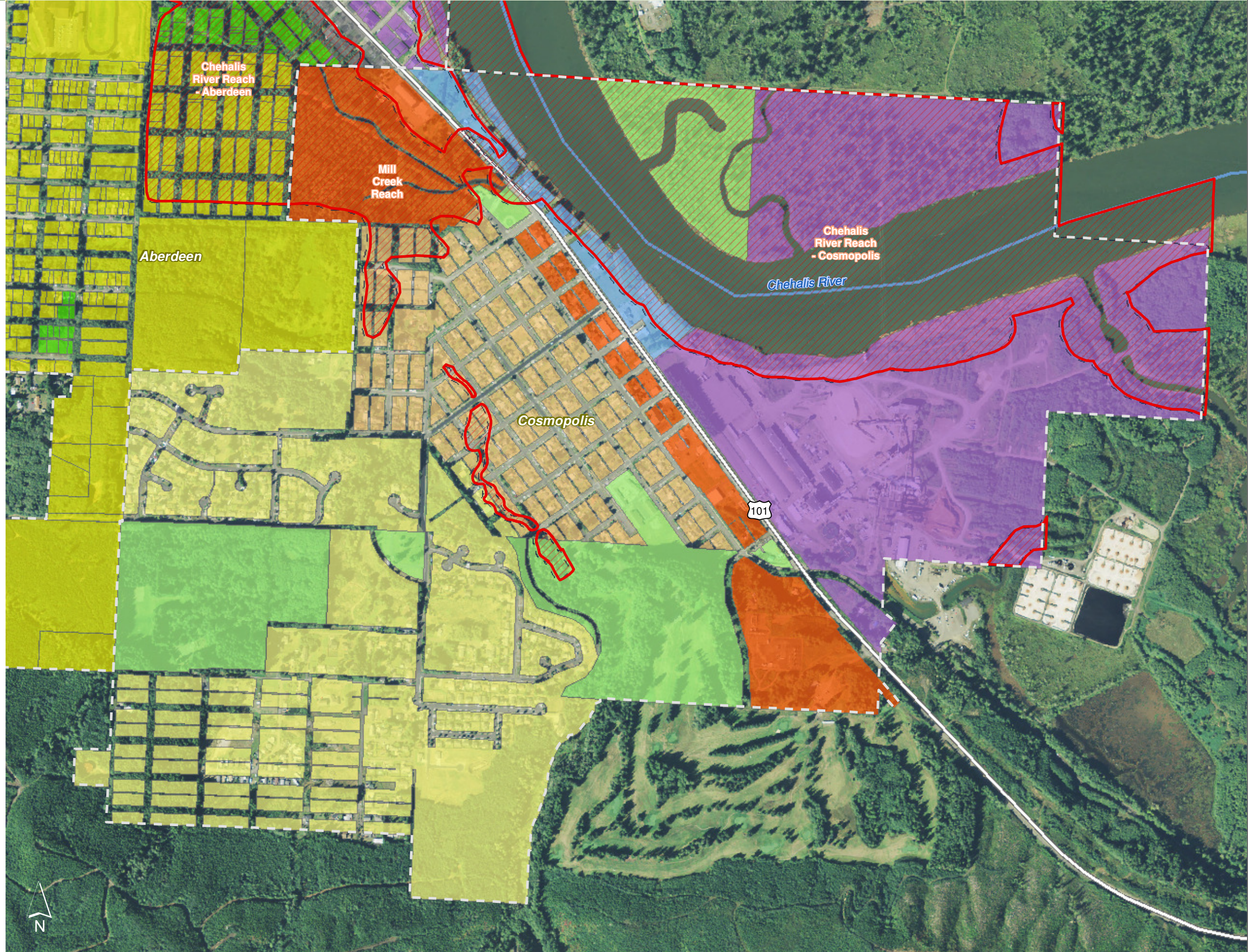
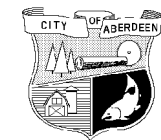
1:10,000

Area of interest in red



Source: Grays Harbor County, USFWS NWI (2011), FEMA Preliminary DFIRM (2013), DNR, WSDOT, Ecology, NRCS NAIP

Shoreline jurisdiction boundaries depicted on this map are approximate. They have not been formally delineated or surveyed and are intended for planning purposes only. Additional site-specific evaluation may be needed to confirm/verify information shown on this map.




Geological Hazards


Figure 15.4: Cosmopolis


Date: 10/2/2014

Tsunami Inundation

 Cascadia Scenario 1A Seismic Event

Liquefaction Susceptibility

 Moderate to High

 Preliminary Shoreline Jurisdiction

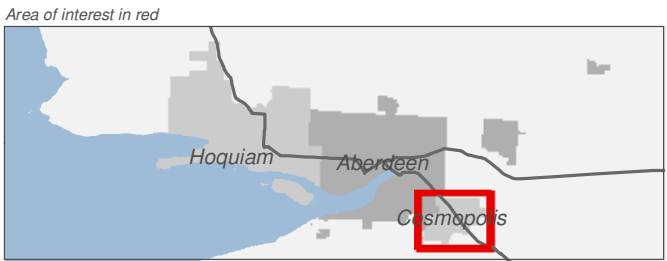
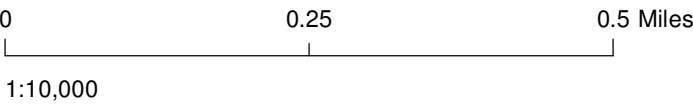
 Reaches

 City Boundary

 SMA Rivers

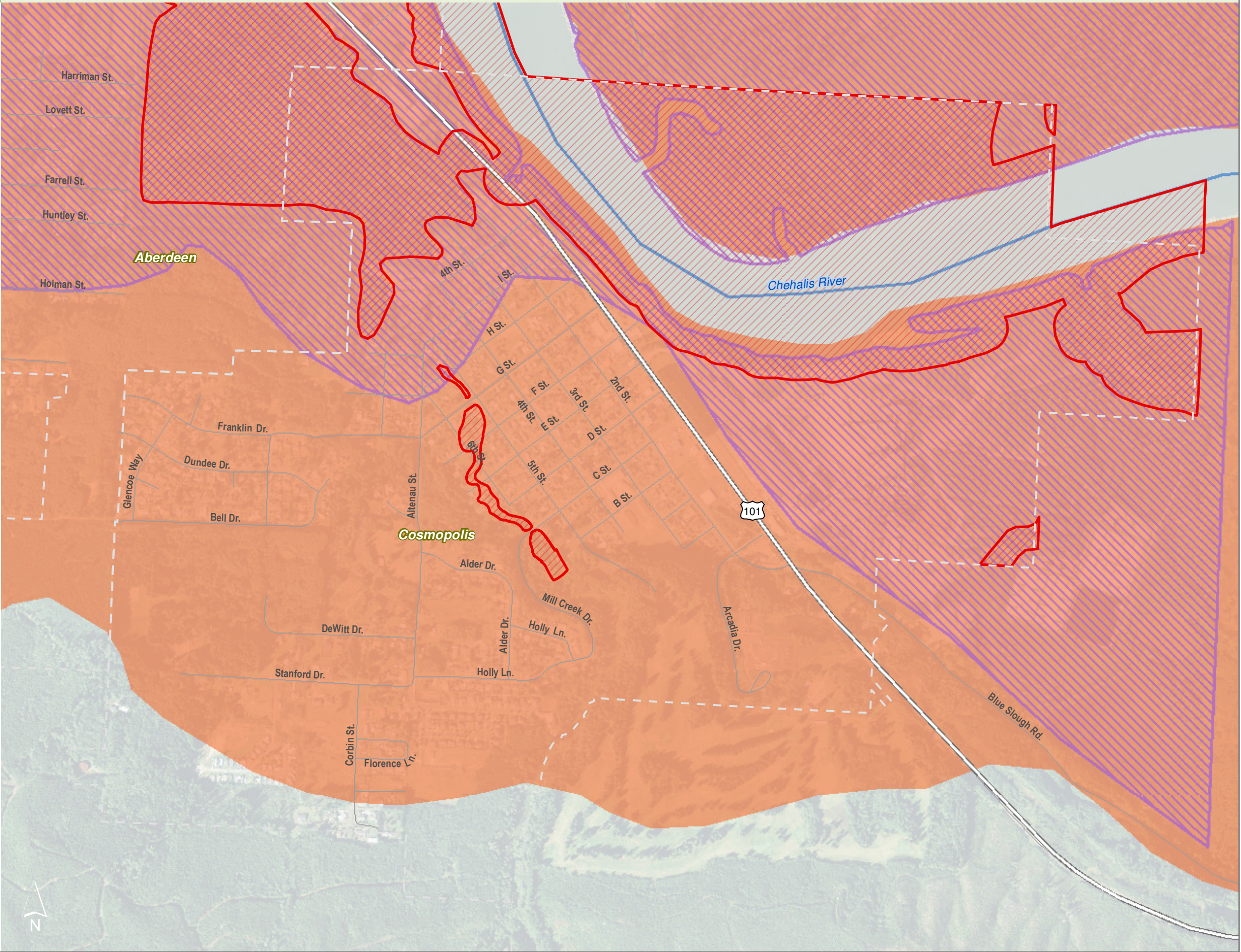
 SMA Lakes

 Highways

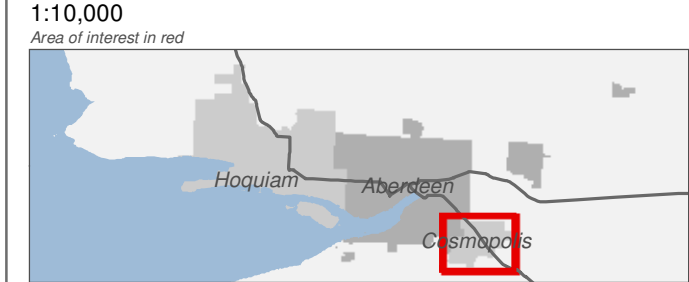


Source: Grays Harbor County, USFWS NWI (2011), FEMA Preliminary DFIRM (2013), WA DNR, WSDOT, DOE, NRCS NAIP (2013)

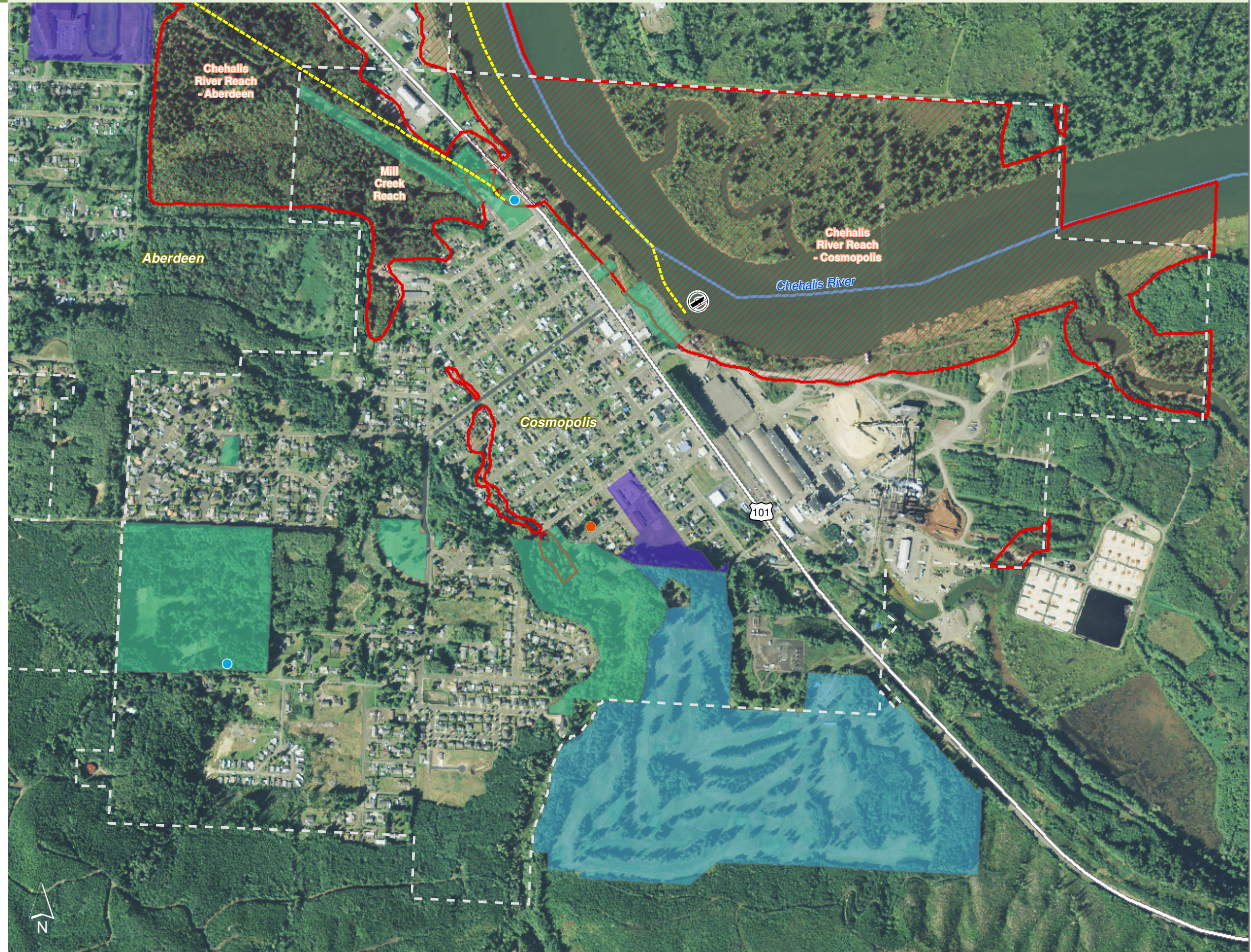
Shoreline jurisdiction boundaries depicted on this map are approximate. They have not been formally delineated or surveyed and are intended for planning purposes only. Additional site-specific evaluation may be needed to confirm/verify information shown on this map.



Date: 10/2/2014



Shoreline jurisdiction boundaries depicted on this map are approximate. They have not been formally delineated or surveyed and are intended for planning purposes only. Additional site-specific evaluation may be needed to confirm/verify information shown on this map.



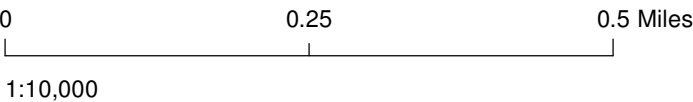
Shoreline Environment Designations

Figure 17.4: Cosmopolis

Date: 10/1/2014

Shoreline Environment Designation

- High Intensity
- Shoreline Residential
- Urban Conservancy
- Reaches
- City Boundary
- SMA Rivers
- SMA Lakes
- Highways



Source: Grays Harbor County, USFWS NWI (2011), FEMA Preliminary DFIRM (2013), WA DNR, WSDOT, DOE, NRCS NAIP (2013)

Shoreline jurisdiction boundaries depicted on this map are approximate. They have not been formally delineated or surveyed and are intended for planning purposes only. Additional site-specific evaluation may be needed to confirm/verify information shown on this map.

