





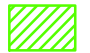


# WDFW Priority Habitat Wildlife

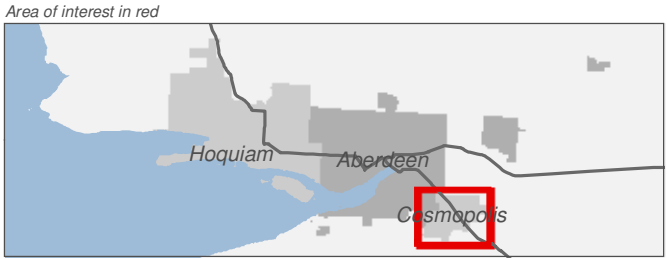
Figure 10.4: Cosmopolis

Date: 10/2/2014

-  Preliminary Jurisdiction
-  Reaches
-  City Boundary
-  SMA Rivers
-  SMA Lakes
-  Highways
-  Wood Duck

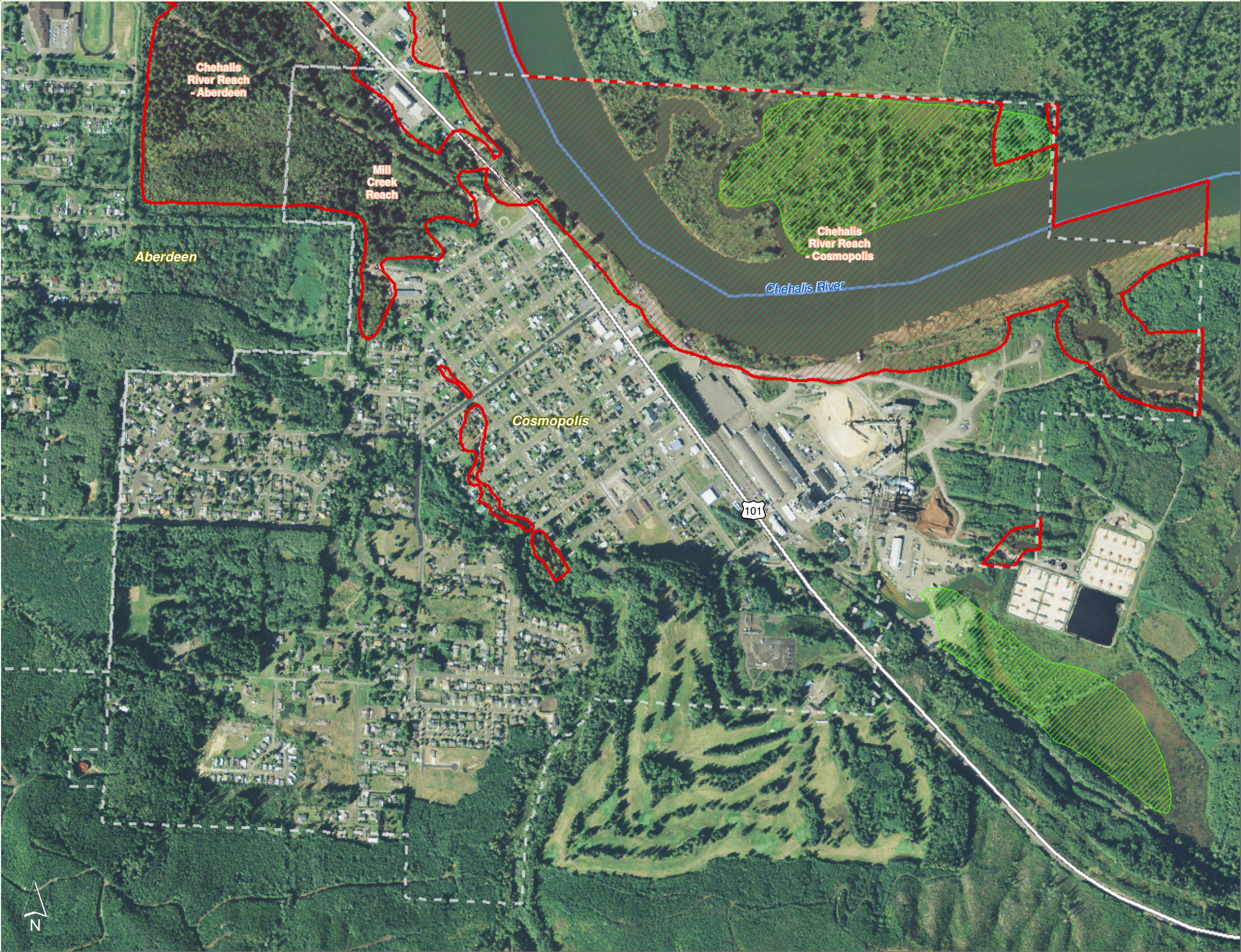
0 0.25 0.5 Miles

1:10,000



Source: Grays Harbor County, USFWS NWI (2011), FEMA Preliminary DFIRM (2013), WA DNR, WSDOT, DOE, NRCS NAIP (2013)

Shoreline jurisdiction boundaries depicted on this map are approximate. They have not been formally delineated or surveyed and are intended for planning purposes only. Additional site-specific evaluation may be needed to confirm/verify information shown on this map.

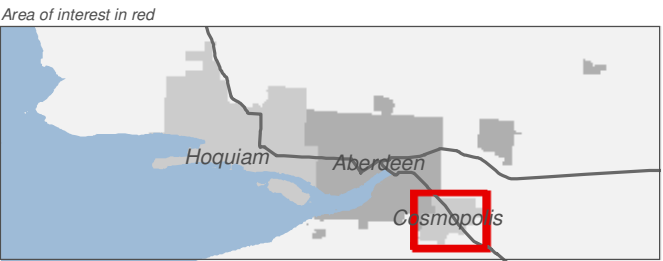
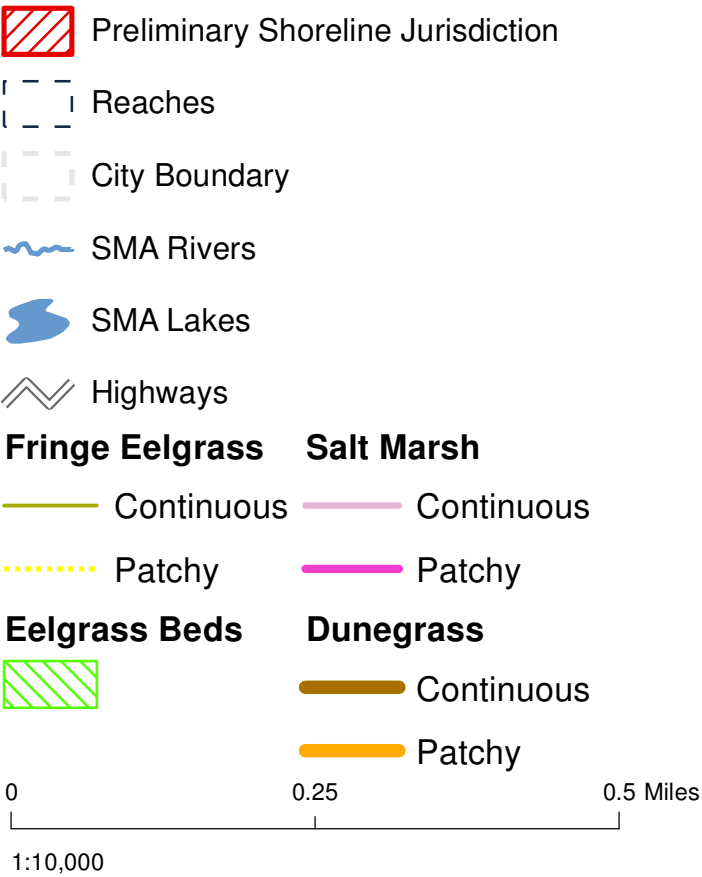




# Nearshore Vegetation

Figure 11.4: Cosmopolis

Date: 10/2/2014



Source: Grays Harbor County, USFWS NWI (2011), FEMA Preliminary DFIRM (2013), WA DNR, WSDOT, DOE, NRCS NAIP (2013)

Shoreline jurisdiction boundaries depicted on this map are approximate. They have not been formally delineated or surveyed and are intended for planning purposes only. Additional site-specific evaluation may be needed to confirm/verify information shown on this map.














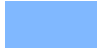

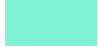
# Public Land

Figure 12.4: Cosmopolis

Date: 10/2/2014

-  Preliminary Shoreline Jurisdiction
-  Reaches
-  City Boundary
-  SMA Rivers
-  SMA Lakes
-  Highways

**Public Land**

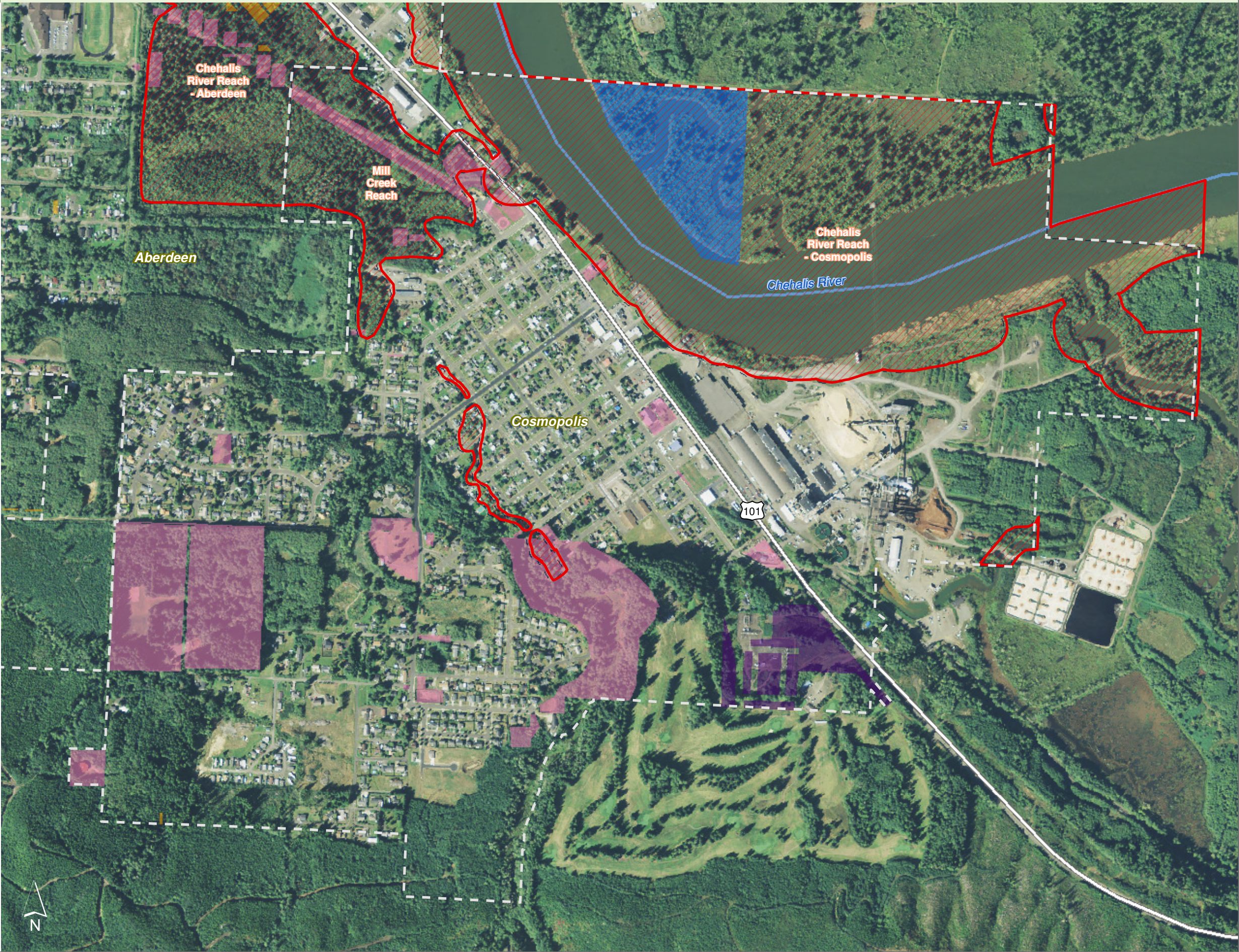
-  Federal Government
-  Grays Harbor County
-  Municipal
-  Port of Grays Harbor
-  Washington DNR
-  State of Washington

0 0.25 0.5 Miles



Source: Grays Harbor County, USFWS NWI (2011), FEMA Preliminary DFIRM (2013), DNR, WSDOT, Ecology, NRCS NAIP

Shoreline jurisdiction boundaries depicted on this map are approximate. They have not been formally delineated or surveyed and are intended for planning purposes only. Additional site-specific evaluation may be needed to confirm/verify information shown on this map.





# Contaminated Sites

Figure 13.4: Cosmopolis

Date: 10/2/2014

- Preliminary Shoreline Jurisdiction
- Reaches
- City Boundary
- SMA Rivers
- SMA Lakes
- Highways

**TankStatus**

- Operational

**Contaminated Sites**

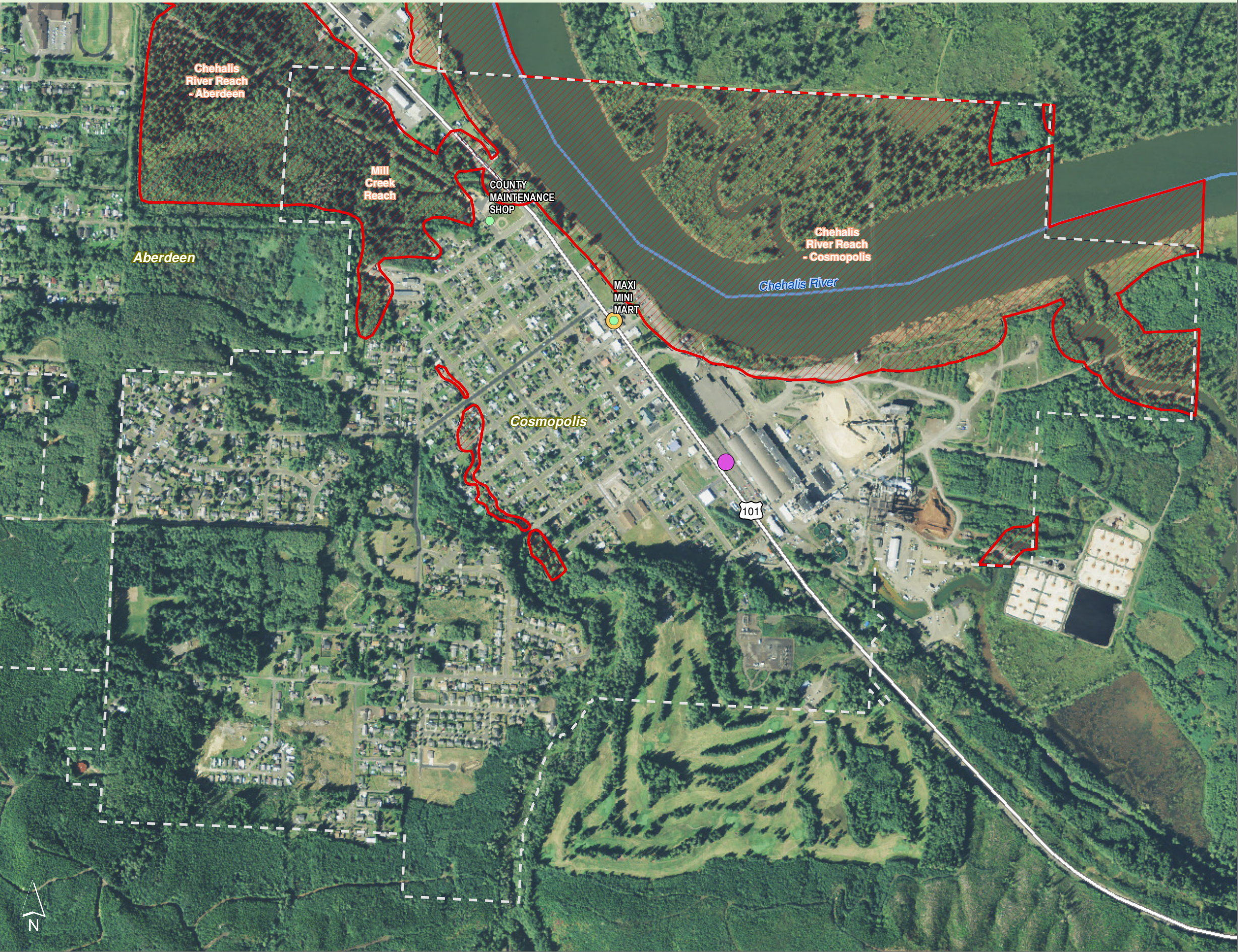
- Awaiting Cleanup
- Cleanup Started
- Construction Complete-Performance Monitoring

0 0.25 0.5 Miles



Source: Grays Harbor County, USFWS NWI (2011), FEMA Preliminary DFIRM (2013), DNR, WSDOT, Ecology, NRCS NAIP

Shoreline jurisdiction boundaries depicted on this map are approximate. They have not been formally delineated or surveyed and are intended for planning purposes only. Additional site-specific evaluation may be needed to confirm/verify information shown on this map.





# Zoning

Figure 14.4: Cosmopolis

Date: 10/2/2014

- Preliminary Shoreline Jurisdiction
- Reaches
- City Boundary
- SMA Rivers
- SMA Lakes
- Highways

- City of Aberdeen Zoning**
- CR - Commercial/Residential
  - I - Industrial
  - RM - Multiple Family Residential
  - RS - Single Family Residential

- City of Cosmopolis Zoning Districts**
- M - Manufacturing
  - MU - Mixed Use
  - PR - Public Reserve
  - R100 - Residential (Low Density)
  - R57 - Residential (Medium Density)
  - WA - Waterfront Use

0 0.25 0.5 Miles

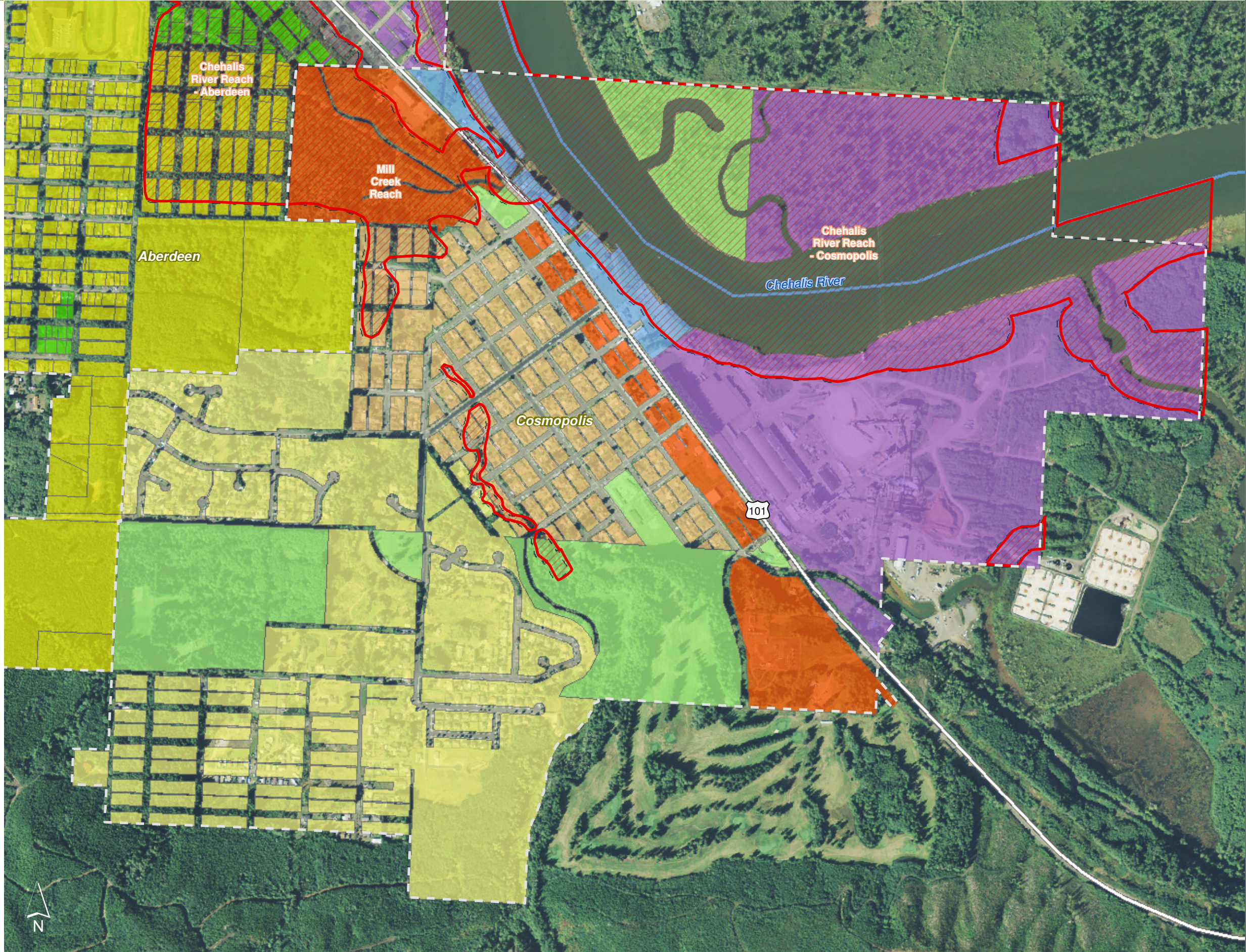
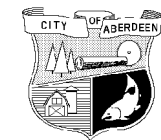
1:10,000

Area of interest in red



Source: Grays Harbor County, USFWS NWI (2011), FEMA Preliminary DFIRM (2013), DNR, WSDOT, Ecology, NRCS NAIP

Shoreline jurisdiction boundaries depicted on this map are approximate. They have not been formally delineated or surveyed and are intended for planning purposes only. Additional site-specific evaluation may be needed to confirm/verify information shown on this map.






# Geological Hazards

Figure 15.4: Cosmopolis


Date: 10/2/2014

**Tsunami Inundation**

 Cascadia Scenario 1A Seismic Event

**Liquefaction Susceptibility**

 Moderate to High

 Preliminary Shoreline Jurisdiction

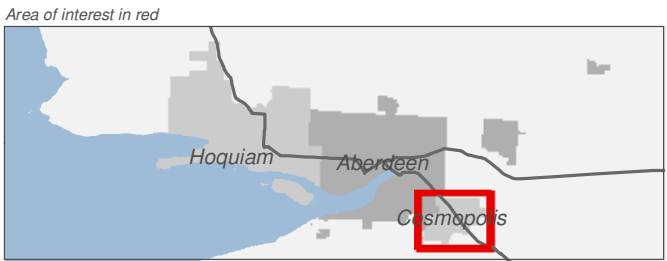
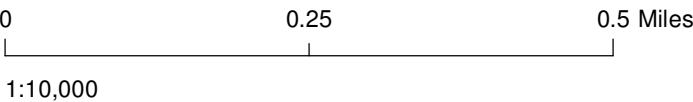
 Reaches

 City Boundary

 SMA Rivers

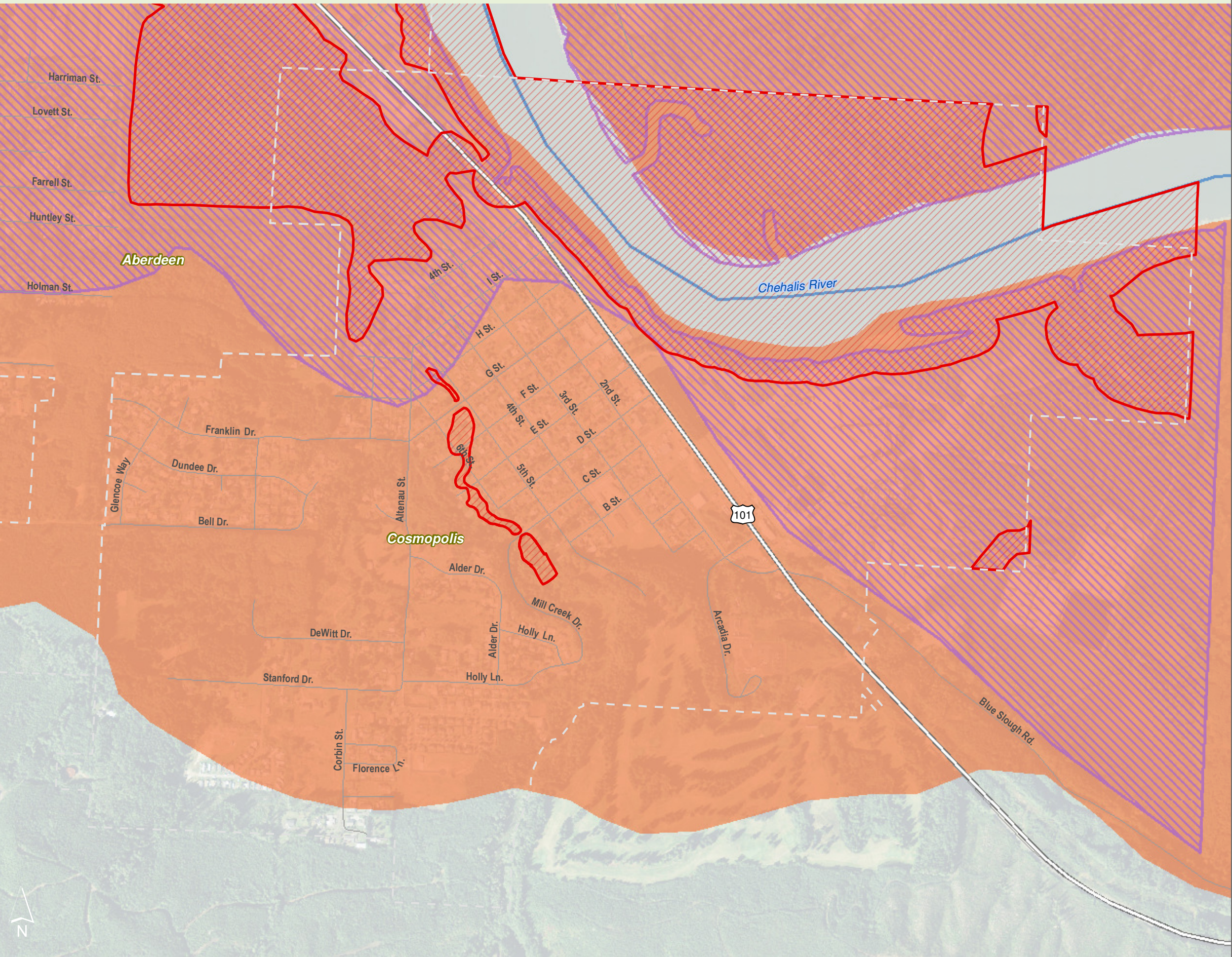
 SMA Lakes

 Highways



Source: Grays Harbor County, USFWS NWI (2011), FEMA Preliminary DFIRM (2013), WA DNR, WSDOT, DOE, NRCS NAIP (2013)

Shoreline jurisdiction boundaries depicted on this map are approximate. They have not been formally delineated or surveyed and are intended for planning purposes only. Additional site-specific evaluation may be needed to confirm/verify information shown on this map.

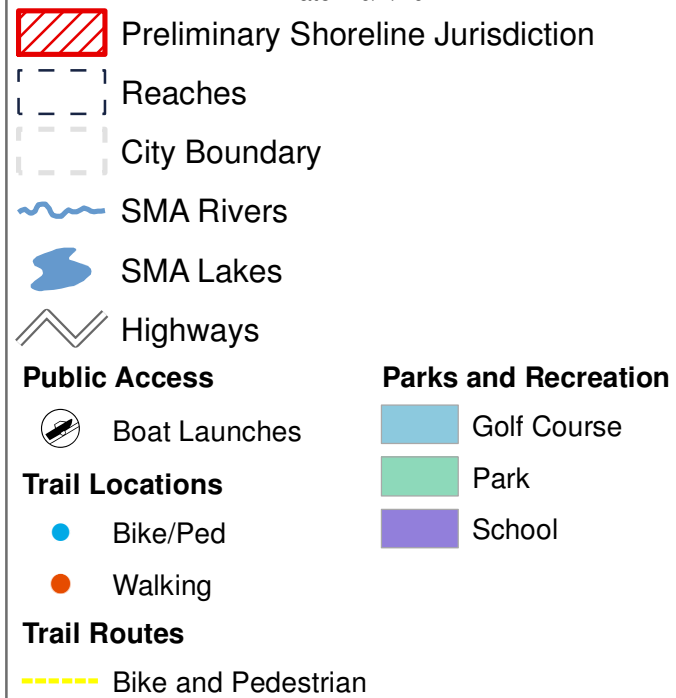




# Public Access

### Figure 16.4: Cosmopolis

Date: 10/2/2014



0 0.25 0.5 Miles

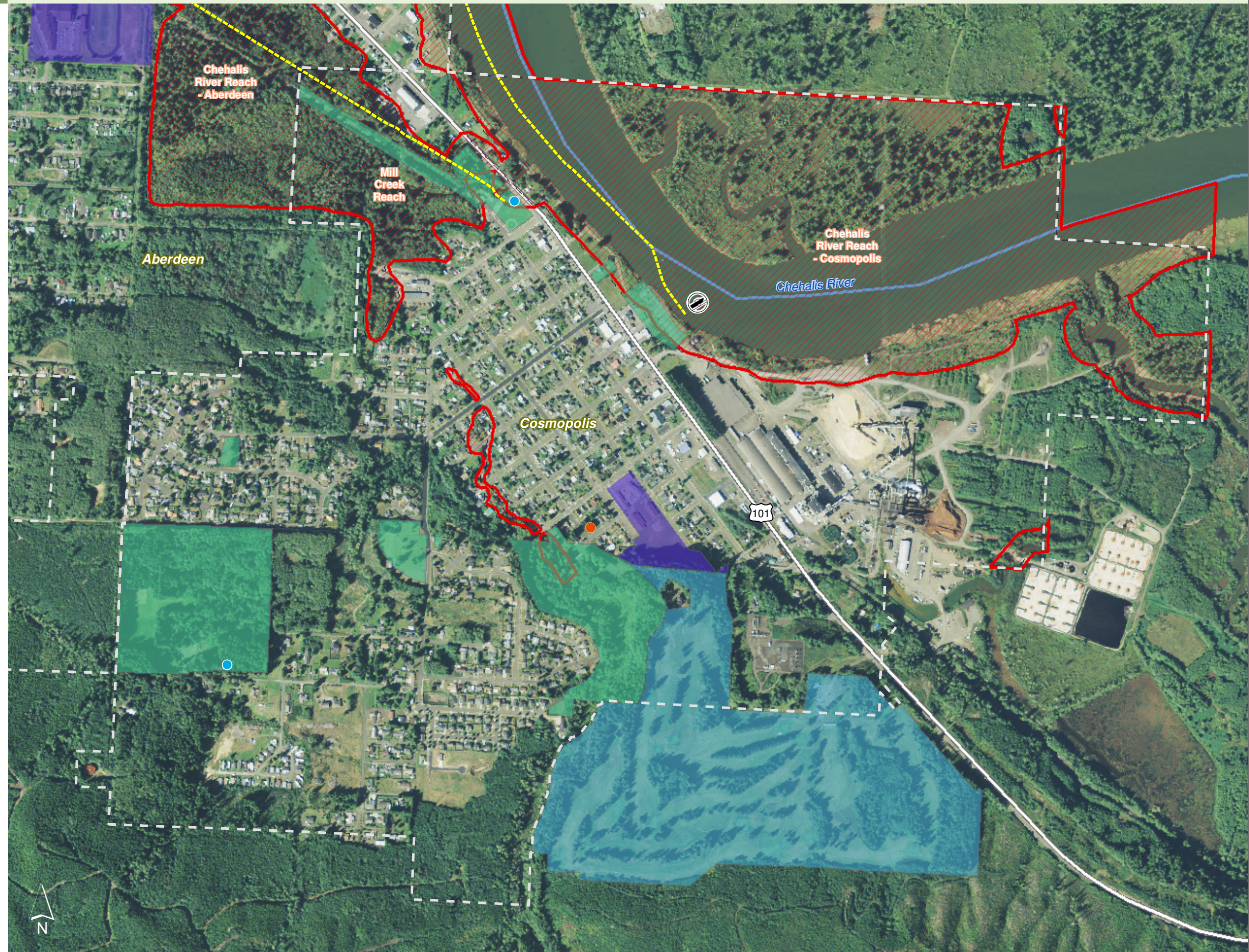
1:10,000

Area of interest in red



Source: Grays Harbor County, USFWS NWI (2011), FEMA Preliminary DFIRM (2013), DNR, WSDOT, Ecology, NRCS NAIP

Shoreline jurisdiction boundaries depicted on this map are approximate. They have not been formally delineated or surveyed and are intended for planning purposes only. Additional site-specific evaluation may be needed to confirm/verify information shown on this map.





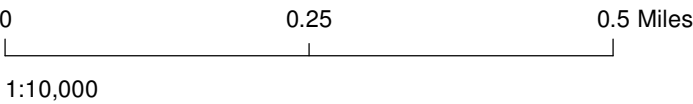
# Shoreline Environment Designations

Figure 17.4: Cosmopolis

Date: 10/1/2014

**Shoreline Environment Designation**

- High Intensity
- Shoreline Residential
- Urban Conservancy
- Reaches
- City Boundary
- SMA Rivers
- SMA Lakes
- Highways



Source: Grays Harbor County, USFWS NWI (2011), FEMA Preliminary DFIRM (2013), WA DNR, WSDOT, DOE, NRCS NAIP (2013)

Shoreline jurisdiction boundaries depicted on this map are approximate. They have not been formally delineated or surveyed and are intended for planning purposes only. Additional site-specific evaluation may be needed to confirm/verify information shown on this map.

