

Shoreline Environment Designations

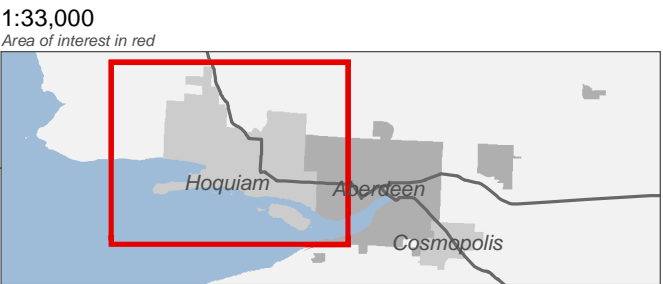
Figure 17.1: Hoquiam

Date: 12/14/2015

Shoreline Environment Designation

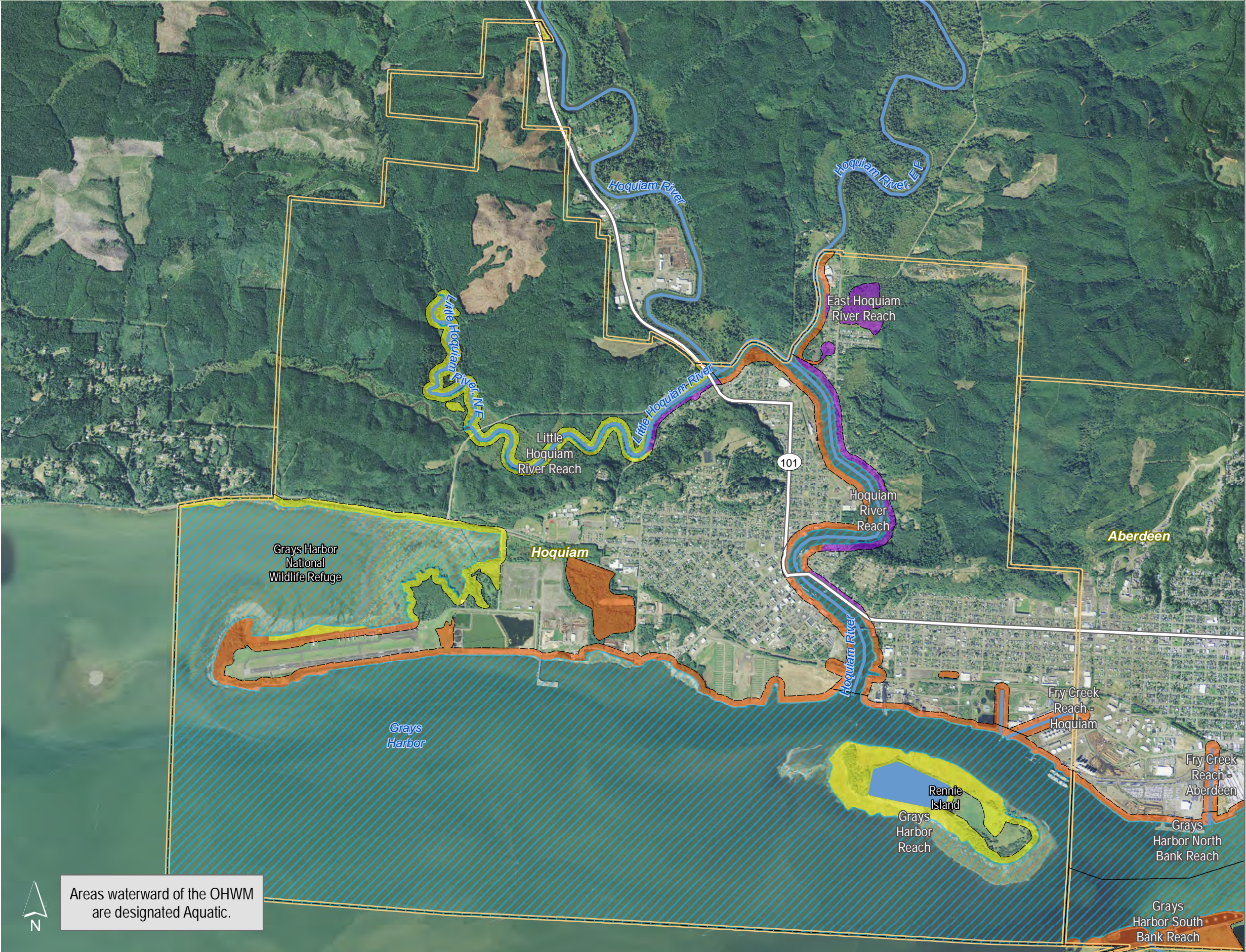
- High Intensity
- Shoreline Residential
- Urban Conservancy
- Aquatic
- Reaches
- City Boundary
- SMA Rivers
- SMA Lakes
- Highways

0 0.25 0.5 Miles



Source: Grays Harbor County, USFWS NWI (2011), FEMA Preliminary DFIRM (2013), WA DNR, WSDOT, DOE, NRCS NAIP (2013)

Shoreline jurisdiction boundaries depicted on this map are approximate. They have not been formally delineated or surveyed and are intended for planning purposes only. Additional site-specific evaluation may be needed to confirm/verify information shown on this map.



Areas waterward of the OHWM are designated Aquatic.

Shoreline Environment Designations

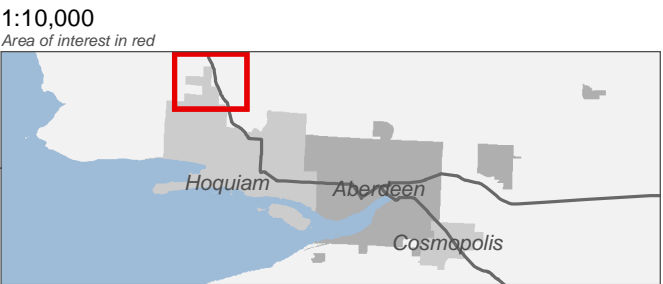
Figure 17.11: Hoquiam

Date: 12/14/2015

Shoreline Environment Designation

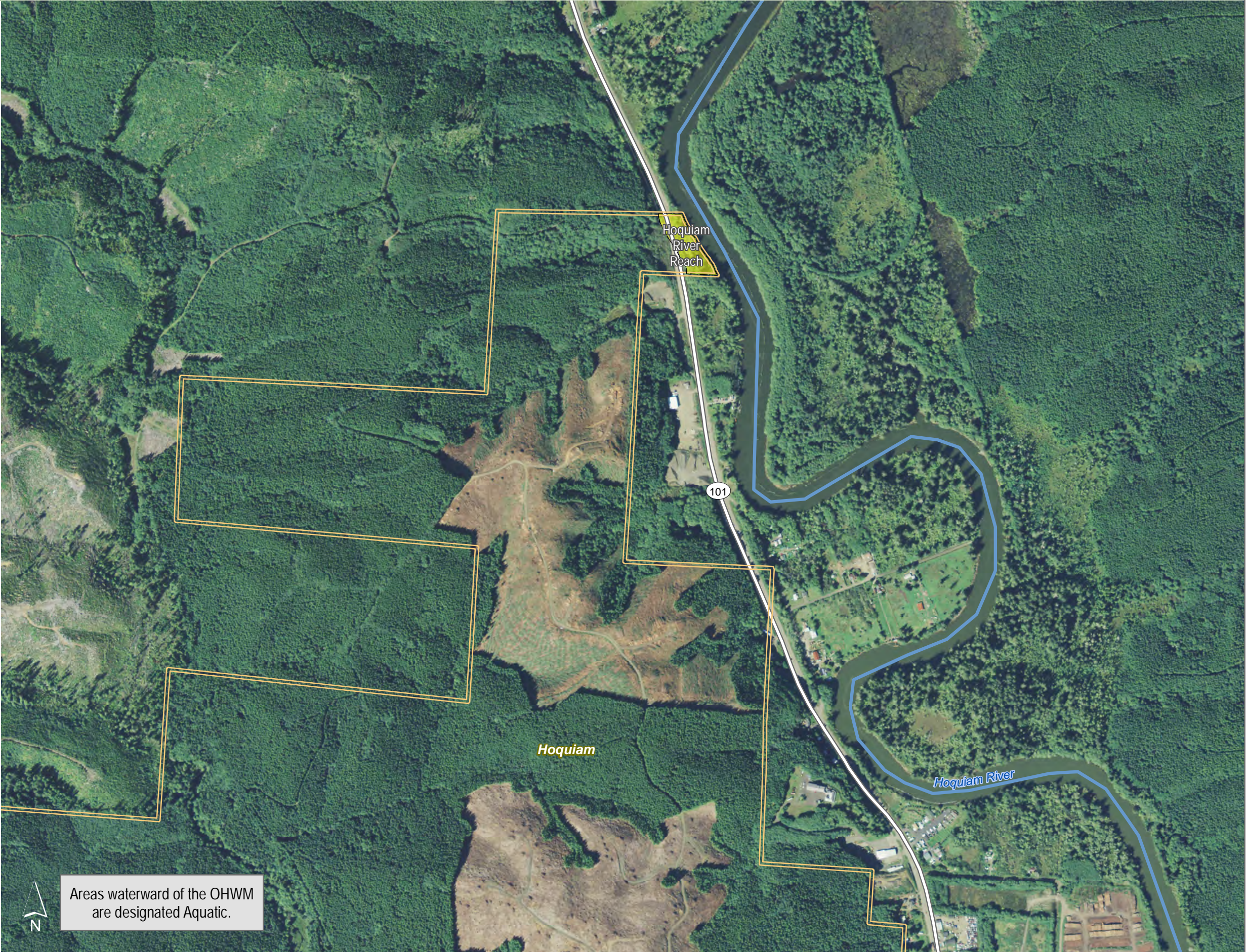
- High Intensity
- Shoreline Residential
- Urban Conservancy
- Aquatic
- Reaches
- City Boundary
- SMA Rivers
- SMA Lakes
- Highways

0 0.25 0.5 Miles



Source: Grays Harbor County, USFWS NWI (2011), FEMA Preliminary DFIRM (2013), WA DNR, WSDOT, DOE, NRCS NAIP (2013)

Shoreline jurisdiction boundaries depicted on this map are approximate. They have not been formally delineated or surveyed and are intended for planning purposes only. Additional site-specific evaluation may be needed to confirm/verify information shown on this map.



Shoreline Environment Designations

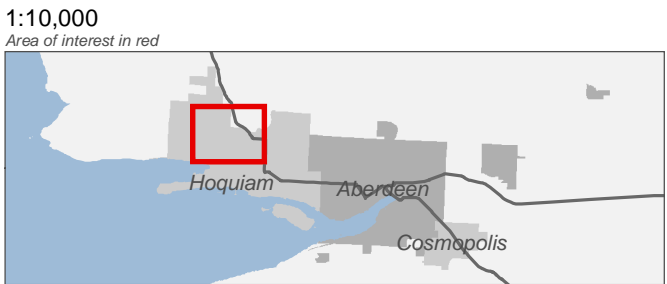
Figure 17.12: Hoquiam

Date: 12/14/2015

Shoreline Environment Designation

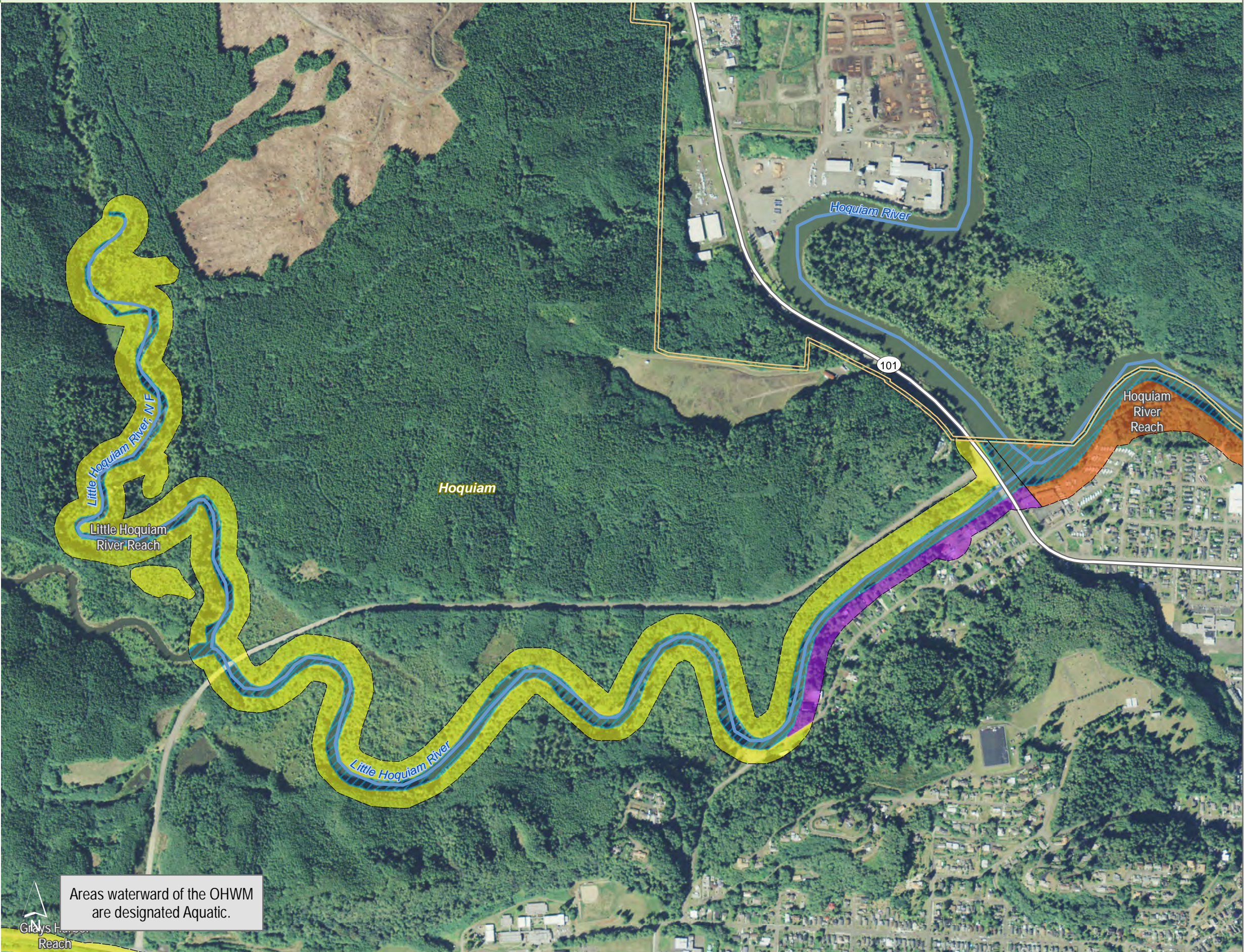
- High Intensity
- Shoreline Residential
- Urban Conservancy
- Aquatic
- Reaches
- City Boundary
- SMA Rivers
- SMA Lakes
- Highways

0 0.25 0.5 Miles



Source: Grays Harbor County, USFWS NWI (2011), FEMA Preliminary DFIRM (2013), WA DNR, WSDOT, DOE, NRCS NAIP (2013)

Shoreline jurisdiction boundaries depicted on this map are approximate. They have not been formally delineated or surveyed and are intended for planning purposes only. Additional site-specific evaluation may be needed to confirm/verify information shown on this map.



Shoreline Environment Designations

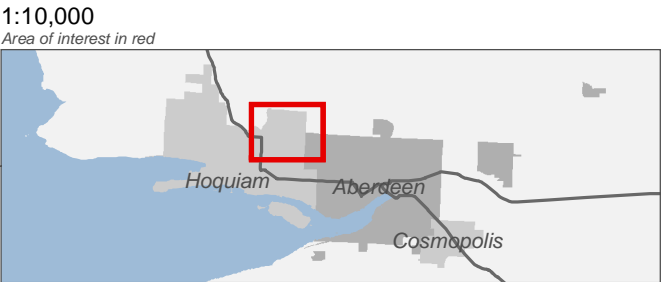
Figure 17.13: Hoquiam

Date: 12/14/2015

Shoreline Environment Designation

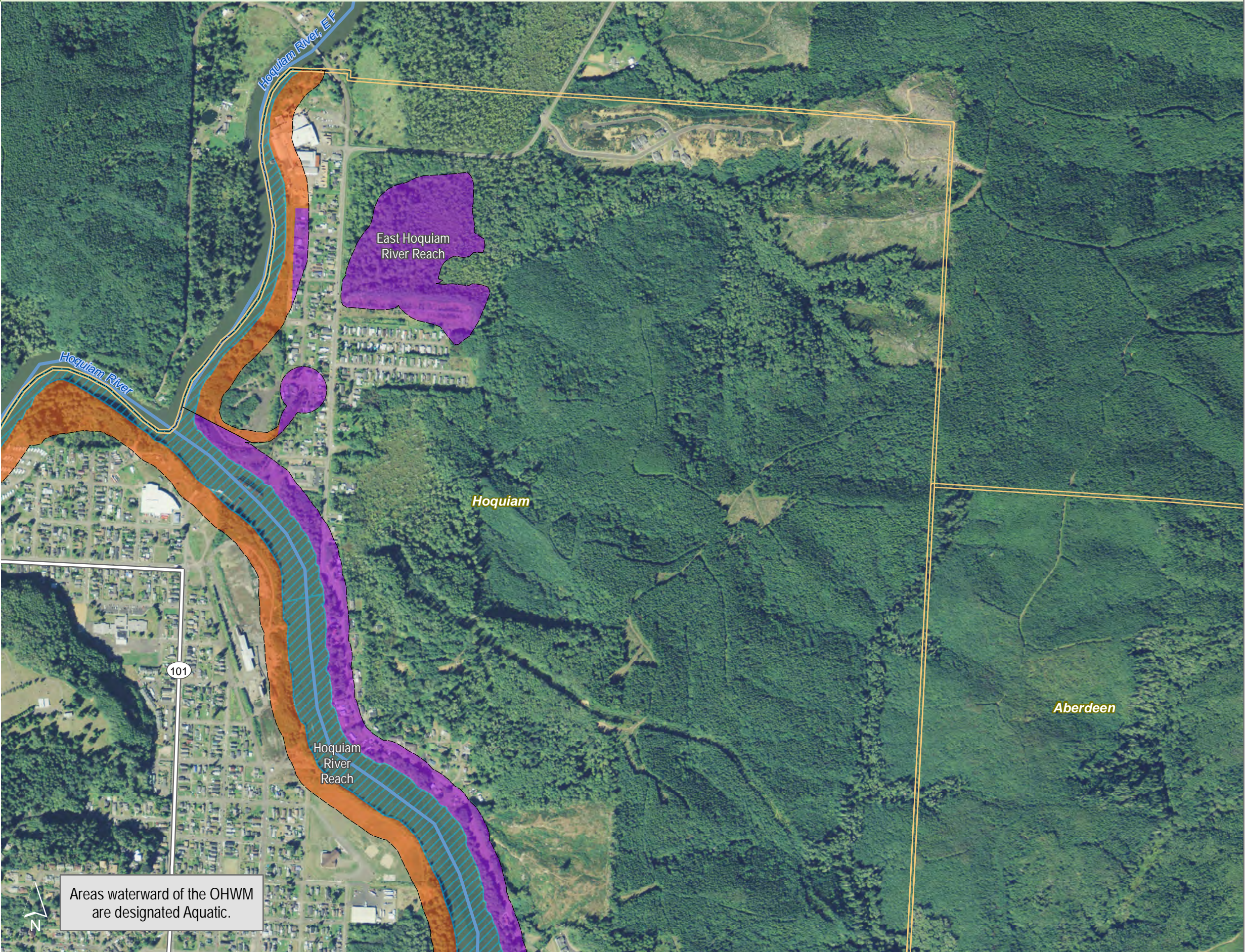
- High Intensity
- Shoreline Residential
- Urban Conservancy
- Aquatic
- Reaches
- City Boundary
- SMA Rivers
- SMA Lakes
- Highways

0 0.25 0.5 Miles



Source: Grays Harbor County, USFWS NWI (2011), FEMA Preliminary DFIRM (2013), WA DNR, WSDOT, DOE, NRCS NAIP (2013)

Shoreline jurisdiction boundaries depicted on this map are approximate. They have not been formally delineated or surveyed and are intended for planning purposes only. Additional site-specific evaluation may be needed to confirm/verify information shown on this map.



Shoreline Environment Designations

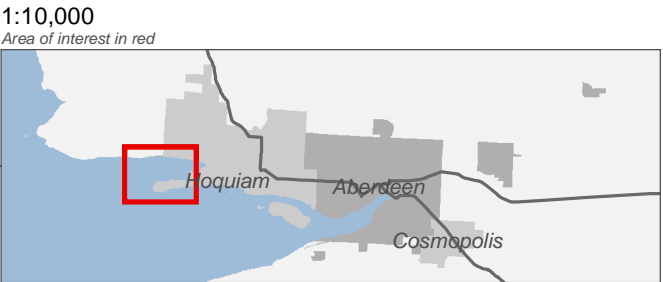
Figure 17.14: Hoquiam

Date: 12/14/2015

Shoreline Environment Designation

- High Intensity
- Shoreline Residential
- Urban Conservancy
- Aquatic
- Reaches
- City Boundary
- SMA Rivers
- SMA Lakes
- Highways

0 0.25 0.5 Miles



Source: Grays Harbor County, USFWS NWI (2011), FEMA Preliminary DFIRM (2013), WA DNR, WSDOT, DOE, NRCS NAIP (2013)

Shoreline jurisdiction boundaries depicted on this map are approximate. They have not been formally delineated or surveyed and are intended for planning purposes only. Additional site-specific evaluation may be needed to confirm/verify information shown on this map.



Areas waterward of the OHWM are designated Aquatic.

Shoreline Environment Designations

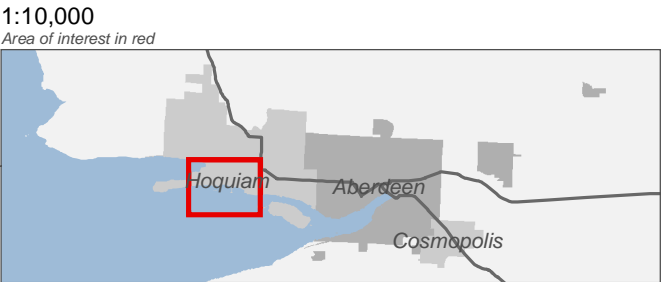
Figure 17.15: Hoquiam

Date: 12/14/2015

Shoreline Environment Designation

- High Intensity
- Shoreline Residential
- Urban Conservancy
- Aquatic
- Reaches
- City Boundary
- SMA Rivers
- SMA Lakes
- Highways

0 0.25 0.5 Miles



Source: Grays Harbor County, USFWS NWI (2011), FEMA Preliminary DFIRM (2013), WA DNR, WSDOT, DOE, NRCS NAIP (2013)

Shoreline jurisdiction boundaries depicted on this map are approximate. They have not been formally delineated or surveyed and are intended for planning purposes only. Additional site-specific evaluation may be needed to confirm/verify information shown on this map.



Areas waterward of the OHWM are designated Aquatic.

Shoreline Environment Designations

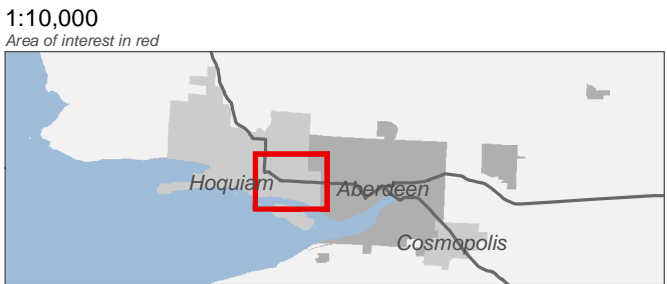
Figure 17.16: Hoquiam

Date: 12/14/2015

Shoreline Environment Designation

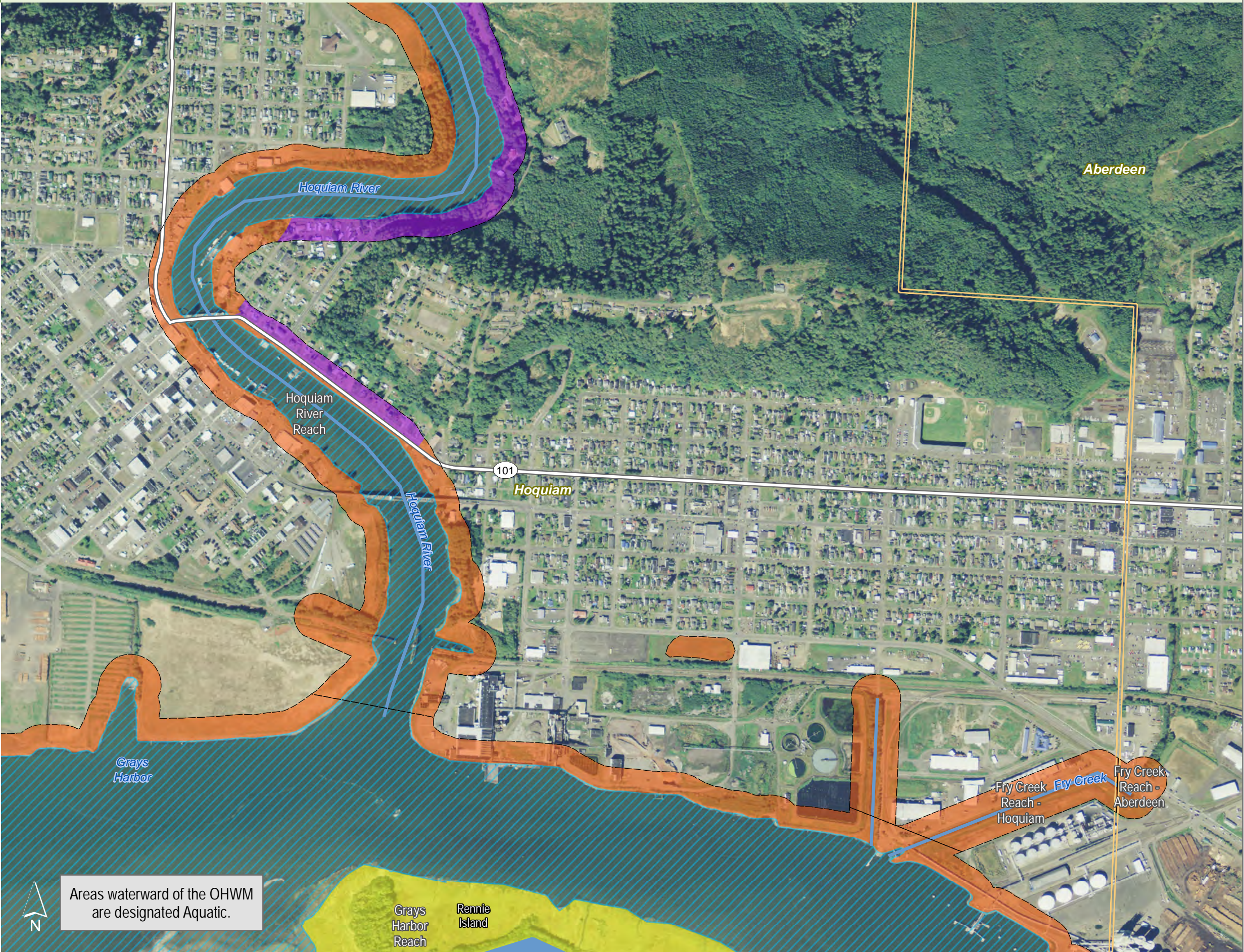
- High Intensity
- Shoreline Residential
- Urban Conservancy
- Aquatic
- Reaches
- City Boundary
- SMA Rivers
- SMA Lakes
- Highways

0 0.25 0.5 Miles



Source: Grays Harbor County, USFWS NWI (2011), FEMA Preliminary DFIRM (2013), WA DNR, WSDOT, DOE, NRCS NAIP (2013)

Shoreline jurisdiction boundaries depicted on this map are approximate. They have not been formally delineated or surveyed and are intended for planning purposes only. Additional site-specific evaluation may be needed to confirm/verify information shown on this map.



Shoreline Environment Designations

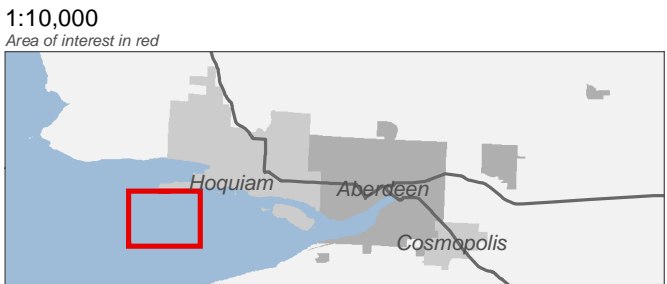
Figure 17.17: Hoquiam

Date: 12/14/2015

Shoreline Environment Designation

- High Intensity
- Shoreline Residential
- Urban Conservancy
- Aquatic
- Reaches
- City Boundary
- SMA Rivers
- SMA Lakes
- Highways

0 0.25 0.5 Miles



Source: Grays Harbor County, USFWS NWI (2011), FEMA Preliminary DFIRM (2013), WA DNR, WSDOT, DOE, NRCS NAIP (2013)

Shoreline jurisdiction boundaries depicted on this map are approximate. They have not been formally delineated or surveyed and are intended for planning purposes only. Additional site-specific evaluation may be needed to confirm/verify information shown on this map.



Areas waterward of the OHWM
are designated Aquatic.

Shoreline Environment Designations

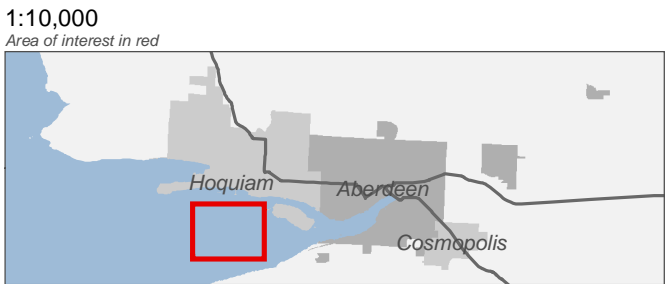
Figure 17.18: Hoquiam

Date: 12/14/2015

Shoreline Environment Designation

- High Intensity
- Shoreline Residential
- Urban Conservancy
- Aquatic
- Reaches
- City Boundary
- SMA Rivers
- SMA Lakes
- Highways

0 0.25 0.5 Miles



Source: Grays Harbor County, USFWS NWI (2011), FEMA Preliminary DFIRM (2013), WA DNR, WSDOT, DOE, NRCS NAIP (2013)

Shoreline jurisdiction boundaries depicted on this map are approximate. They have not been formally delineated or surveyed and are intended for planning purposes only. Additional site-specific evaluation may be needed to confirm/verify information shown on this map.



Areas waterward of the OHWM are designated Aquatic.



Shoreline Environment Designations

Figure 17.19: Hoquiam

Date: 12/14/2015

Shoreline Environment Designation

- High Intensity
- Shoreline Residential
- Urban Conservancy
- Aquatic
- Reaches
- City Boundary
- SMA Rivers
- SMA Lakes
- Highways

0 0.25 0.5 Miles



Source: Grays Harbor County, USFWS NWI (2011), FEMA Preliminary DFIRM (2013), WA DNR, WSDOT, DOE, NRCS NAIP (2013)

Shoreline jurisdiction boundaries depicted on this map are approximate. They have not been formally delineated or surveyed and are intended for planning purposes only. Additional site-specific evaluation may be needed to confirm/verify information shown on this map.



Areas waterward of the OHWM are designated Aquatic.



Shoreline Environment Designations

Figure 17.2: Aberdeen

Date: 12/14/2015

Shoreline Environment Designation

- High Intensity
- Shoreline Residential
- Urban Conservancy
- Aquatic
- Reaches
- City Boundary
- SMA Rivers
- SMA Lakes
- Highways

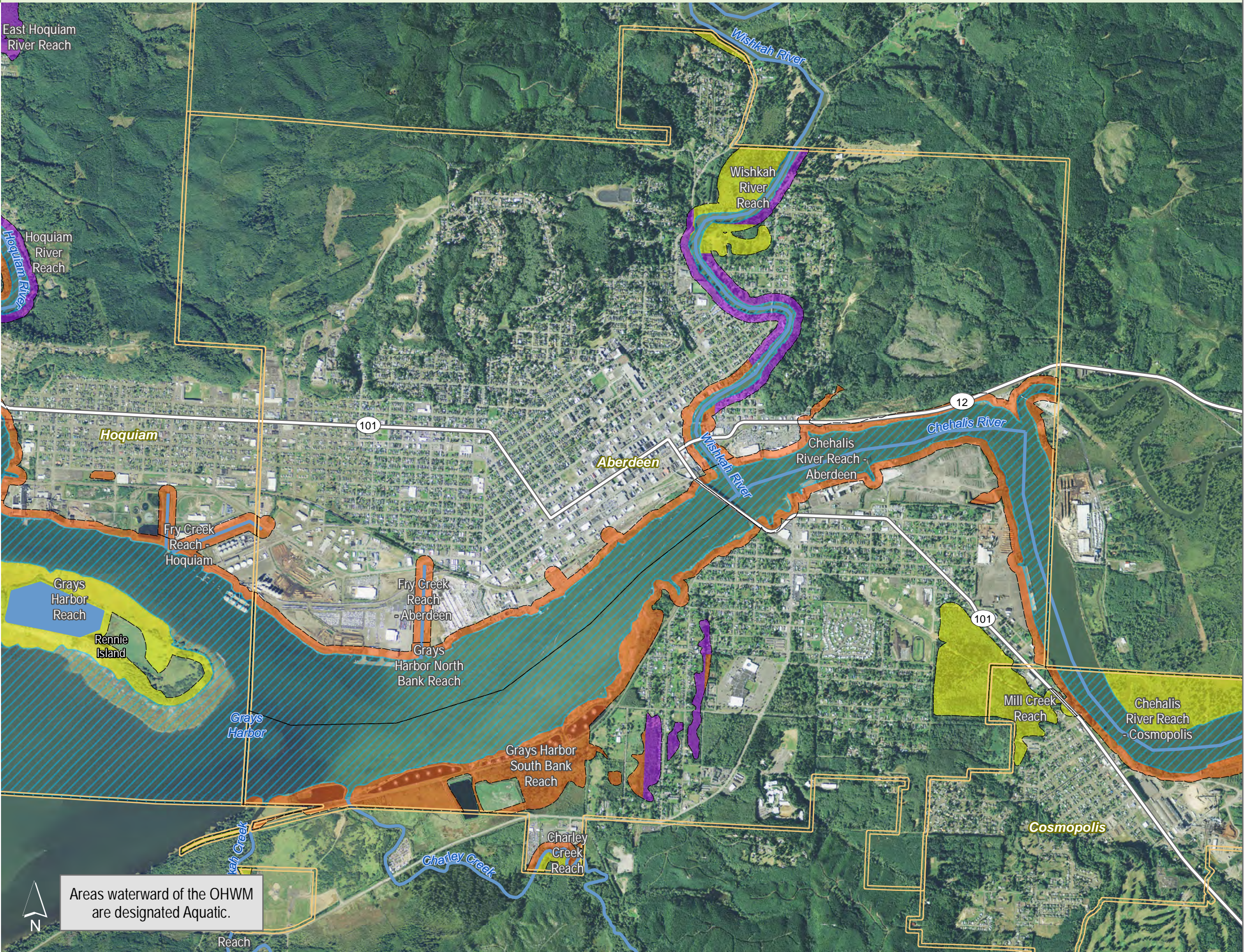
0 0.25 0.5 Miles

1:27,000
Area of interest in red



Source: Grays Harbor County, USFWS NWI (2011), FEMA Preliminary DFIRM (2013), WA DNR, WSDOT, DOE, NRCS NAIP (2013)

Shoreline jurisdiction boundaries depicted on this map are approximate. They have not been formally delineated or surveyed and are intended for planning purposes only. Additional site-specific evaluation may be needed to confirm/verify information shown on this map.



Shoreline Environment Designations

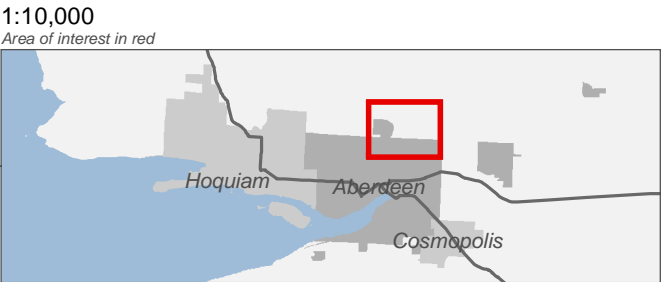
Figure 17.21: Aberdeen

Date: 12/14/2015

Shoreline Environment Designation

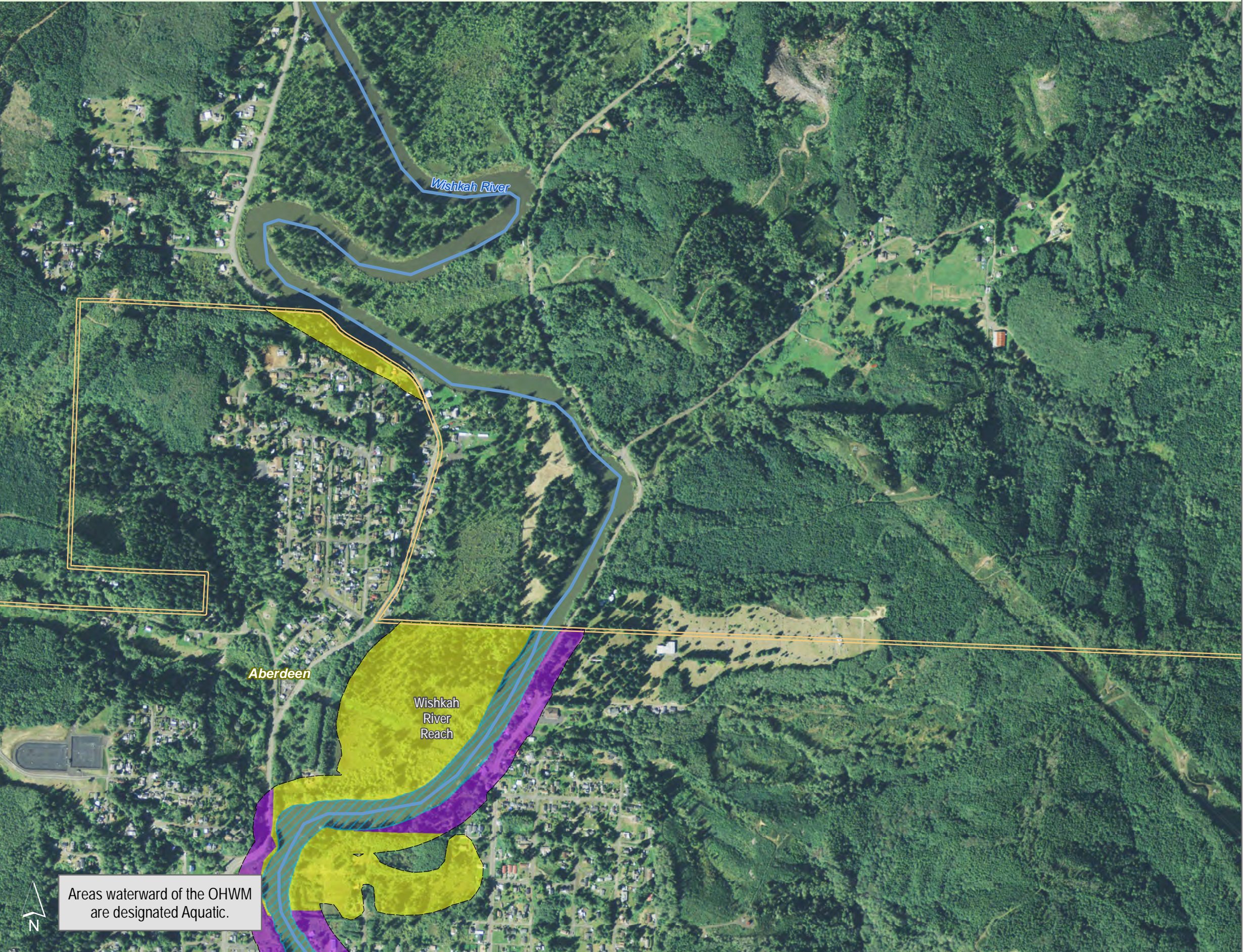
- High Intensity
- Shoreline Residential
- Urban Conservancy
- Aquatic
- Reaches
- City Boundary
- SMA Rivers
- SMA Lakes
- Highways

0 0.25 0.5 Miles



Source: Grays Harbor County, USFWS NWI (2011), FEMA Preliminary DFIRM (2013), WA DNR, WSDOT, DOE, NRCS NAIP (2013)

Shoreline jurisdiction boundaries depicted on this map are approximate. They have not been formally delineated or surveyed and are intended for planning purposes only. Additional site-specific evaluation may be needed to confirm/verify information shown on this map.



Areas waterward of the OHWM are designated Aquatic.

Shoreline Environment Designations

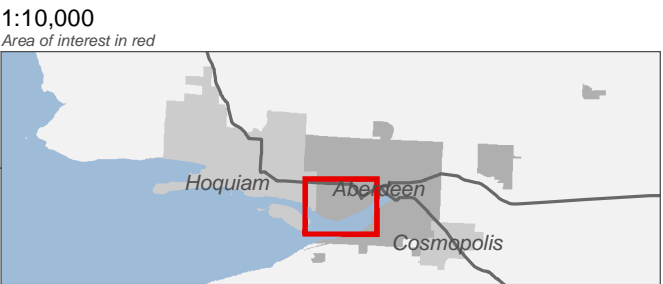
Figure 17.22: Aberdeen

Date: 12/14/2015

Shoreline Environment Designation

- High Intensity
- Shoreline Residential
- Urban Conservancy
- Aquatic
- Reaches
- City Boundary
- SMA Rivers
- SMA Lakes
- Highways

0 0.25 0.5 Miles



Source: Grays Harbor County, USFWS NWI (2011), FEMA Preliminary DFIRM (2013), WA DNR, WSDOT, DOE, NRCS NAIP (2013)

Shoreline jurisdiction boundaries depicted on this map are approximate. They have not been formally delineated or surveyed and are intended for planning purposes only. Additional site-specific evaluation may be needed to confirm/verify information shown on this map.



Areas waterward of the OHWM are designated Aquatic.

Shoreline Environment Designations

Figure 17.23: Aberdeen

Date: 12/14/2015

Shoreline Environment Designation

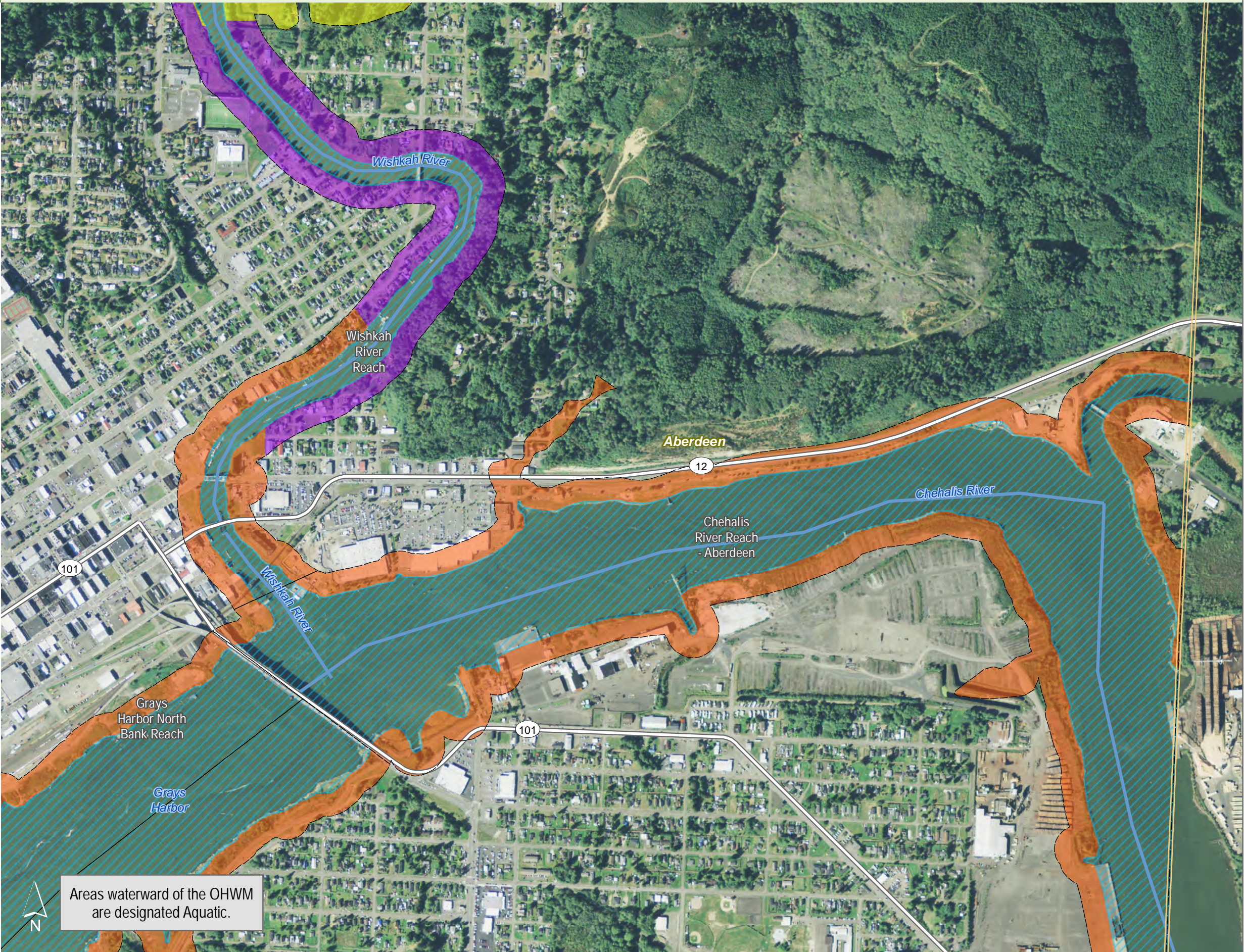
- High Intensity
- Shoreline Residential
- Urban Conservancy
- Aquatic
- Reaches
- City Boundary
- SMA Rivers
- SMA Lakes
- Highways

0 0.25 0.5 Miles



Source: Grays Harbor County, USFWS NWI (2011), FEMA Preliminary DFIRM (2013), WA DNR, WSDOT, DOE, NRCS NAIP (2013)

Shoreline jurisdiction boundaries depicted on this map are approximate. They have not been formally delineated or surveyed and are intended for planning purposes only. Additional site-specific evaluation may be needed to confirm/verify information shown on this map.



Shoreline Environment Designations

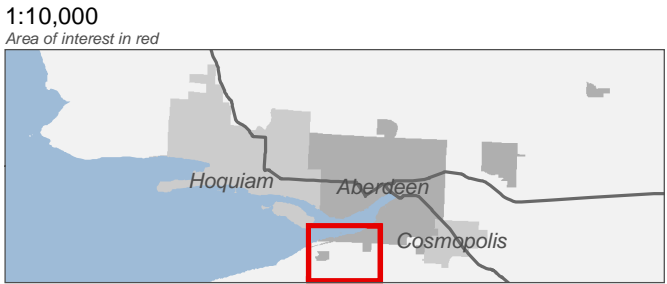
Figure 17.24: Aberdeen

Date: 12/14/2015

Shoreline Environment Designation

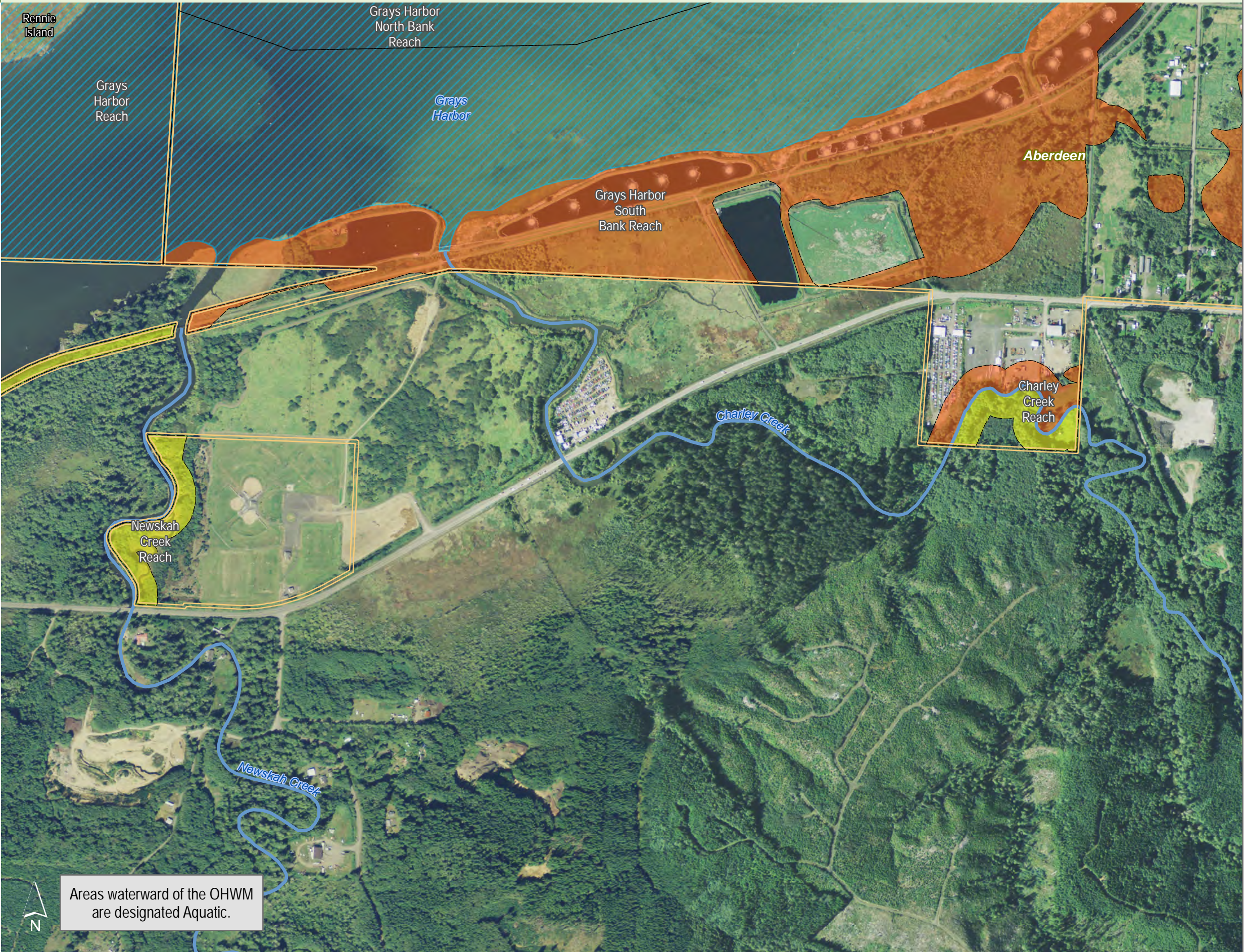
- High Intensity
- Shoreline Residential
- Urban Conservancy
- Aquatic
- Reaches
- City Boundary
- SMA Rivers
- SMA Lakes
- Highways

0 0.25 0.5 Miles



Source: Grays Harbor County, USFWS NWI (2011), FEMA Preliminary DFIRM (2013), WA DNR, WSDOT, DOE, NRCS NAIP (2013)

Shoreline jurisdiction boundaries depicted on this map are approximate. They have not been formally delineated or surveyed and are intended for planning purposes only. Additional site-specific evaluation may be needed to confirm/verify information shown on this map.



Shoreline Environment Designations

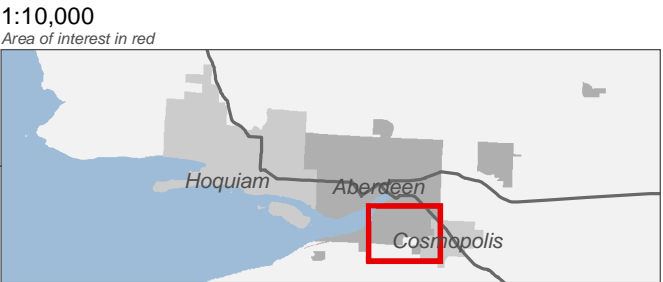
Figure 17.25: Aberdeen

Date: 12/14/2015

Shoreline Environment Designation

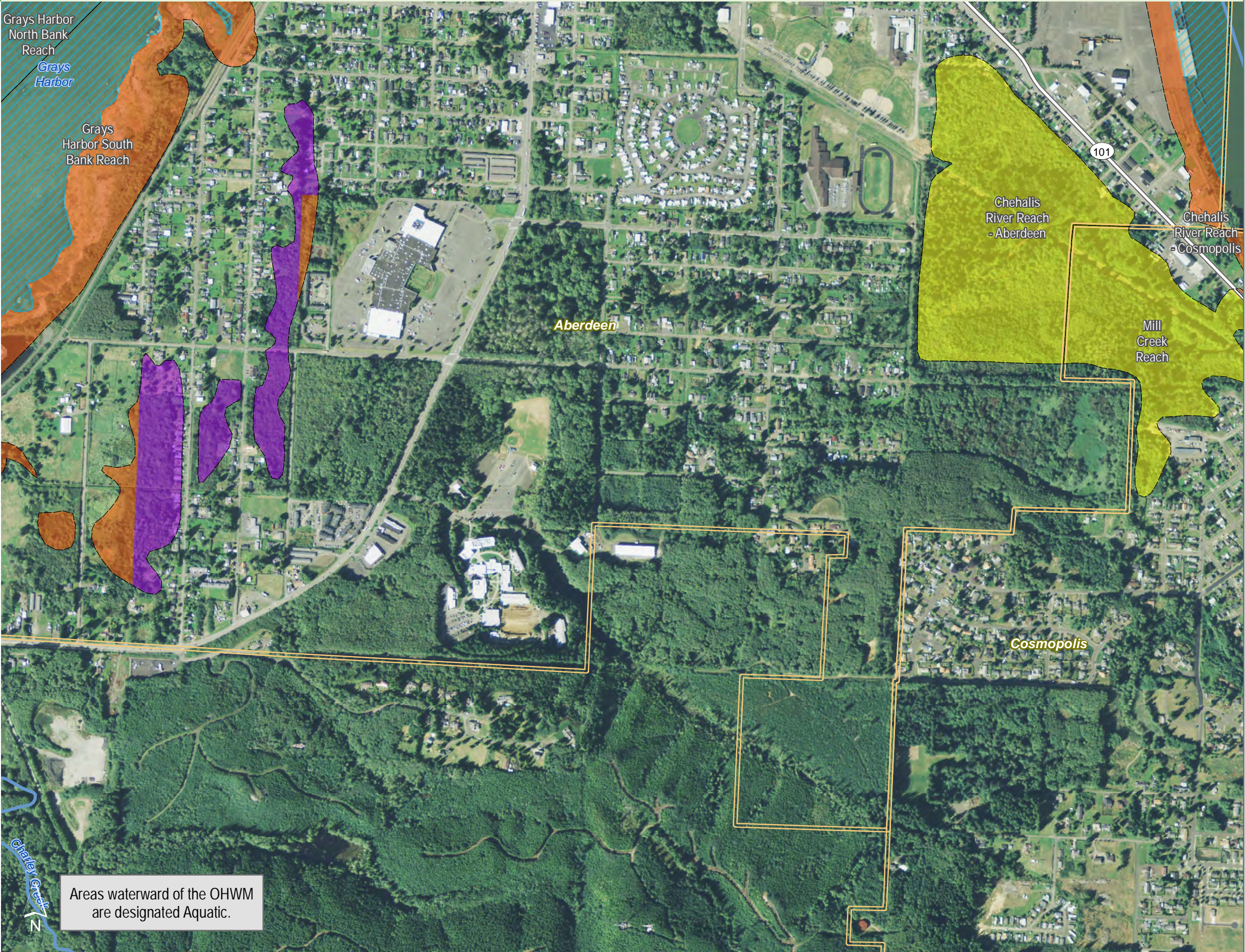
- High Intensity
- Shoreline Residential
- Urban Conservancy
- Aquatic
- Reaches
- City Boundary
- SMA Rivers
- SMA Lakes
- Highways

0 0.25 0.5 Miles



Source: Grays Harbor County, USFWS NWI (2011), FEMA Preliminary DFIRM (2013), WA DNR, WSDOT, DOE, NRCS NAIP (2013)

Shoreline jurisdiction boundaries depicted on this map are approximate. They have not been formally delineated or surveyed and are intended for planning purposes only. Additional site-specific evaluation may be needed to confirm/verify information shown on this map.



Shoreline Environment Designations

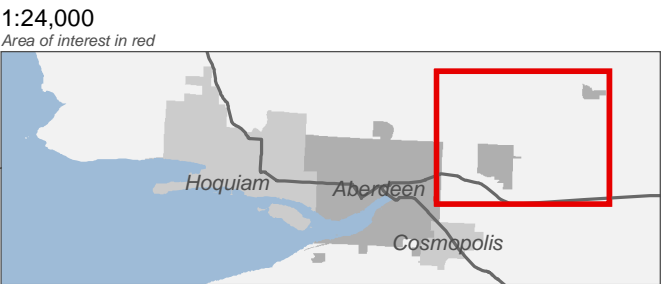
Figure 17.3: Aberdeen

Date: 12/14/2015

Shoreline Environment Designation

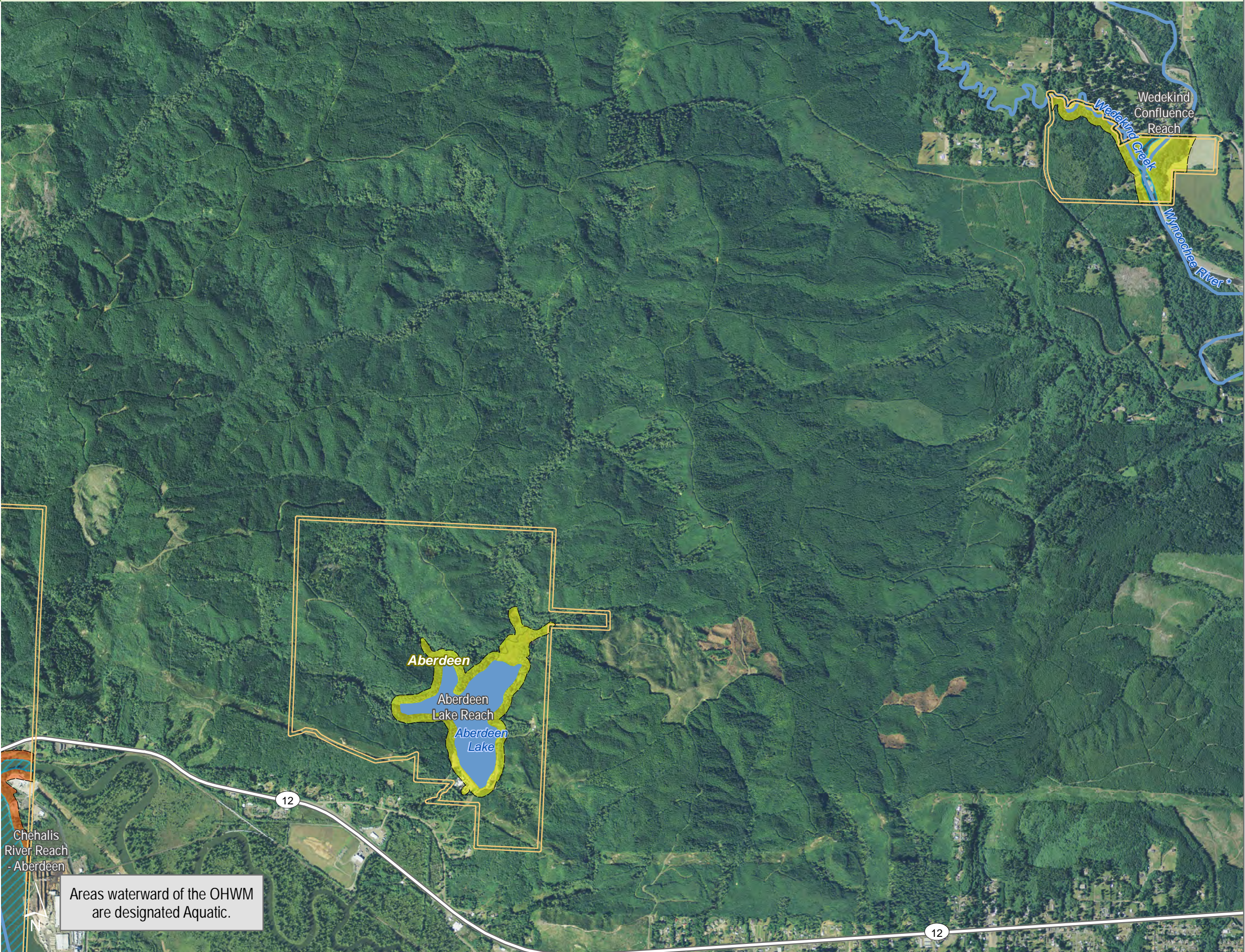
- High Intensity
- Shoreline Residential
- Urban Conservancy
- Aquatic
- Reaches
- City Boundary
- SMA Rivers
- SMA Lakes
- Highways

0 0.25 0.5 Miles



Source: Grays Harbor County, USFWS NWI (2011), FEMA Preliminary DFIRM (2013), WA DNR, WSDOT, DOE, NRCS NAIP (2013)

Shoreline jurisdiction boundaries depicted on this map are approximate. They have not been formally delineated or surveyed and are intended for planning purposes only. Additional site-specific evaluation may be needed to confirm/verify information shown on this map.



Shoreline Environment Designations

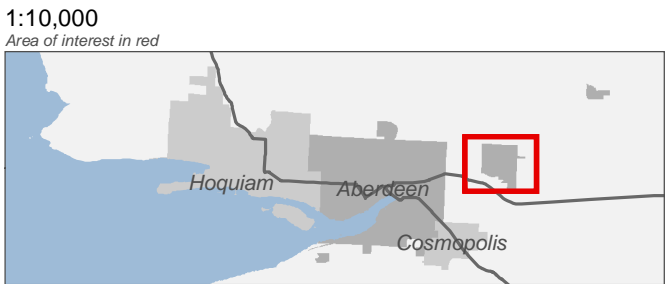
Figure 17.31: Aberdeen

Date: 12/14/2015

Shoreline Environment Designation

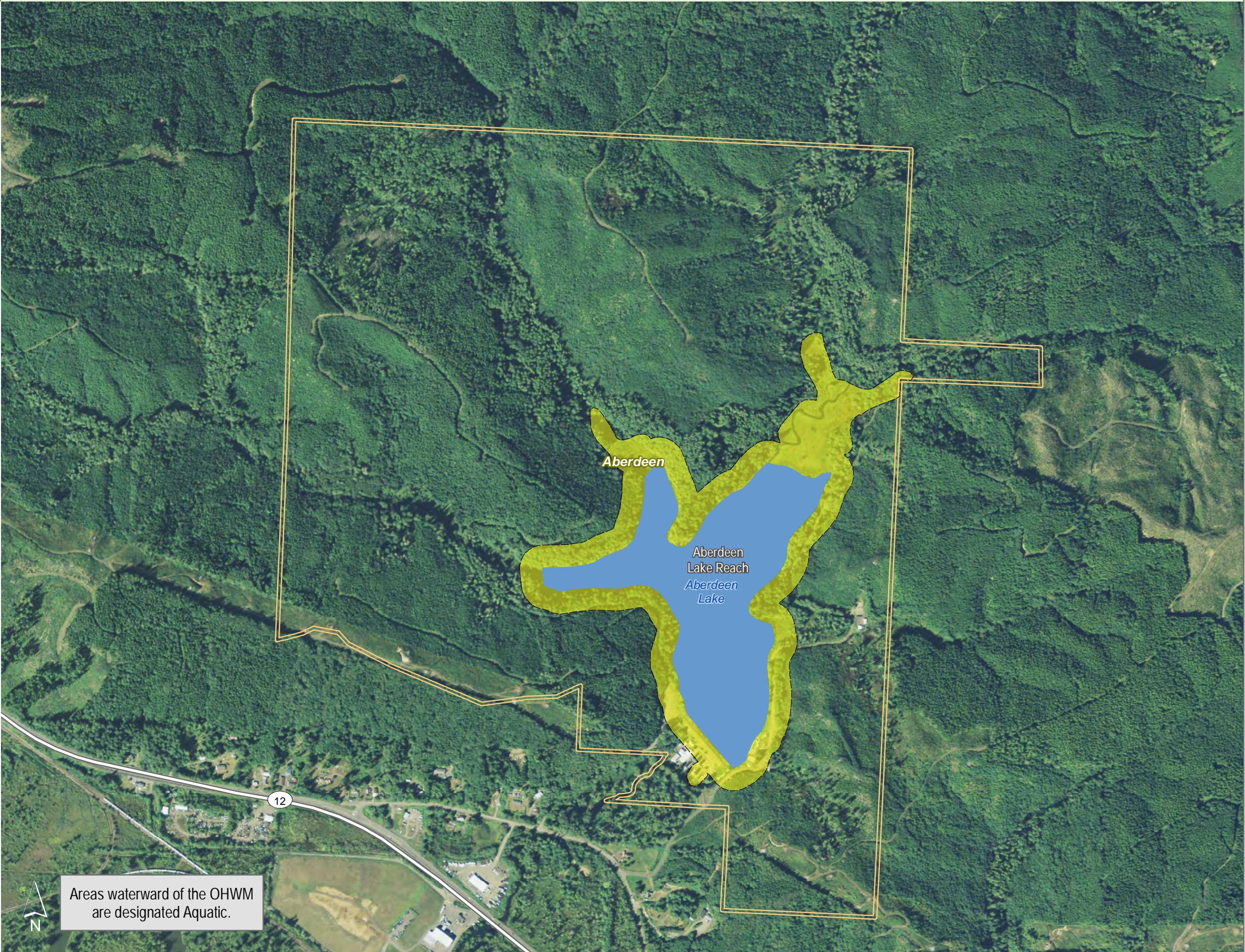
- High Intensity
- Shoreline Residential
- Urban Conservancy
- Aquatic
- Reaches
- City Boundary
- SMA Rivers
- SMA Lakes
- Highways

0 0.25 0.5 Miles



Source: Grays Harbor County, USFWS NWI (2011), FEMA Preliminary DFIRM (2013), WA DNR, WSDOT, DOE, NRCS NAIP (2013)

Shoreline jurisdiction boundaries depicted on this map are approximate. They have not been formally delineated or surveyed and are intended for planning purposes only. Additional site-specific evaluation may be needed to confirm/verify information shown on this map.



Areas waterward of the OHWM are designated Aquatic.

Shoreline Environment Designations

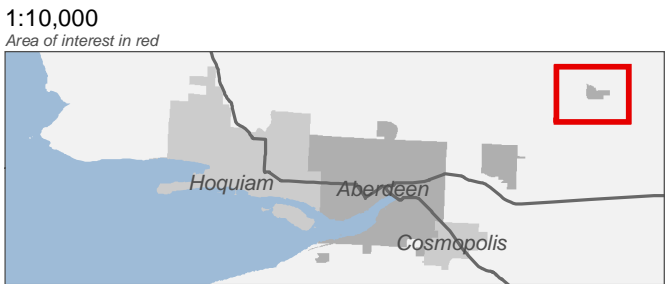
Figure 17.32: Aberdeen

Date: 12/14/2015

Shoreline Environment Designation

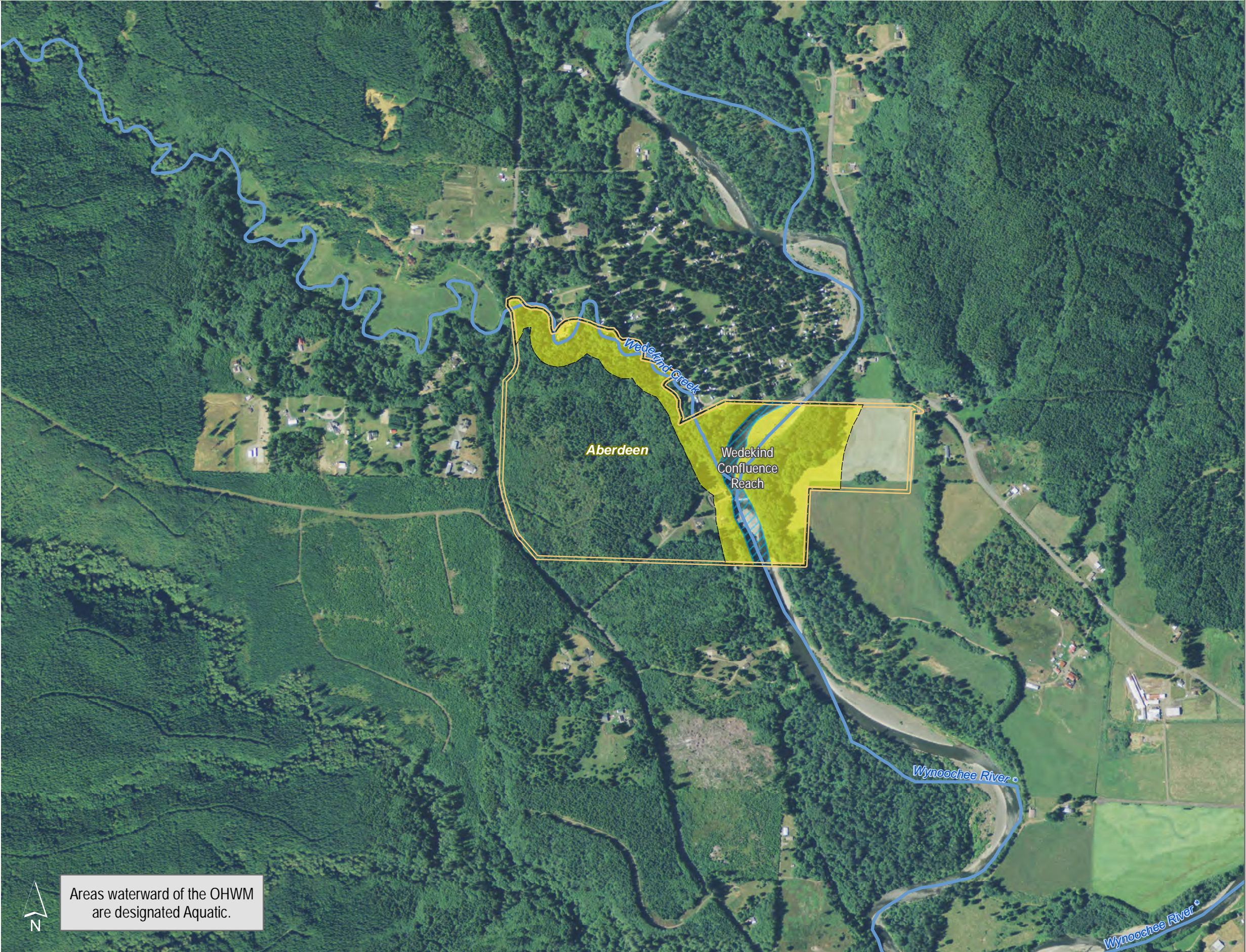
- High Intensity
- Shoreline Residential
- Urban Conservancy
- Aquatic
- Reaches
- City Boundary
- SMA Rivers
- SMA Lakes
- Highways

0 0.25 0.5 Miles



Source: Grays Harbor County, USFWS NWI (2011), FEMA Preliminary DFIRM (2013), WA DNR, WSDOT, DOE, NRCS NAIP (2013)

Shoreline jurisdiction boundaries depicted on this map are approximate. They have not been formally delineated or surveyed and are intended for planning purposes only. Additional site-specific evaluation may be needed to confirm/verify information shown on this map.



Areas waterward of the OHWM are designated Aquatic.

Shoreline Environment Designations

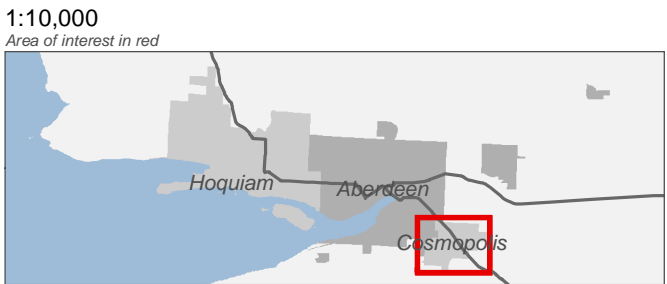
Figure 17.4: Cosmopolis

Date: 12/14/2015

Shoreline Environment Designation

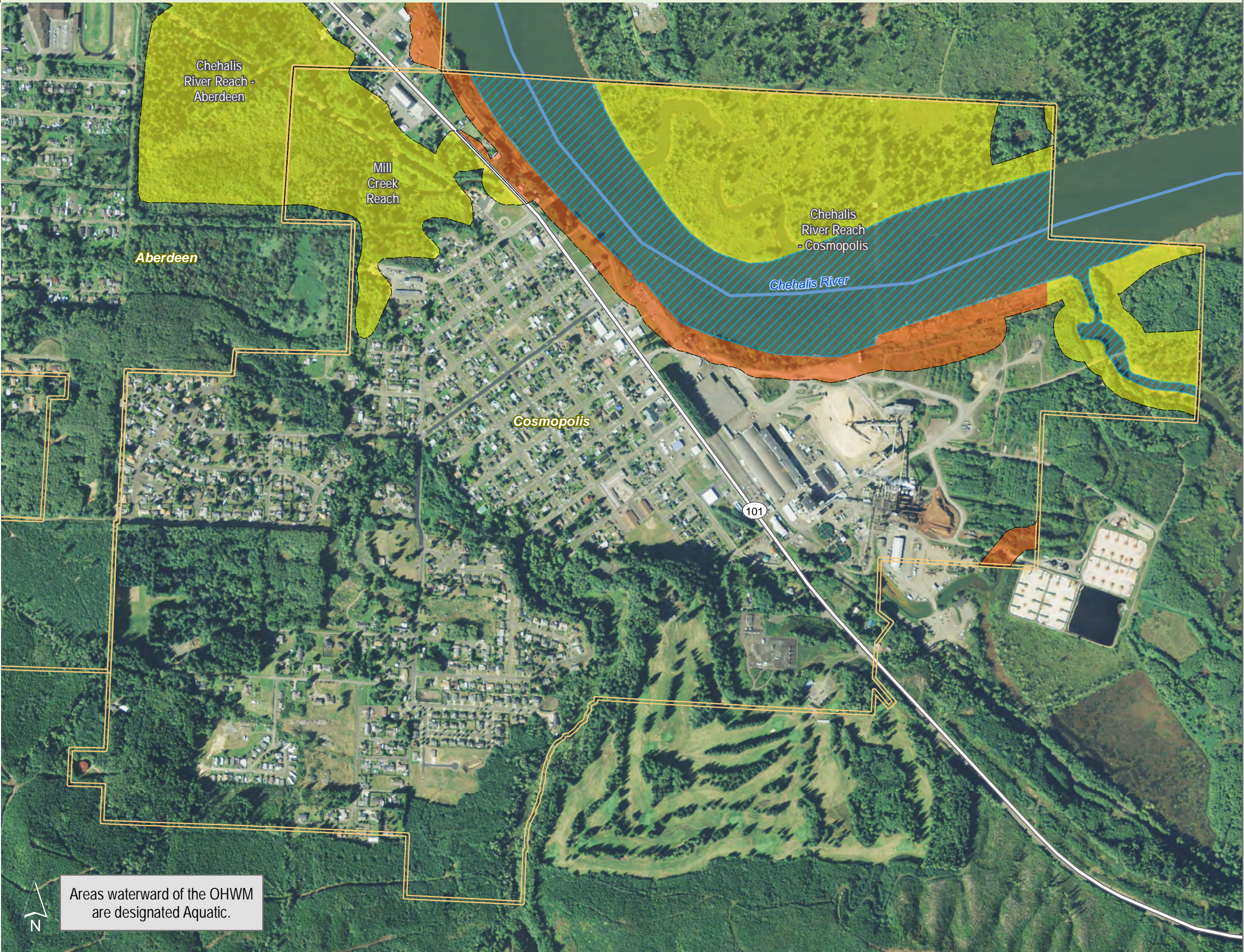
- High Intensity
- Urban Conservancy
- Aquatic
- Reaches
- City Boundary
- SMA Rivers
- SMA Lakes
- Highways

0 0.25 0.5 Miles



Source: Grays Harbor County, USFWS NWI (2011), FEMA Preliminary DFIRM (2013), WA DNR, WSDOT, DOE, NRCS NAIP (2013)

Shoreline jurisdiction boundaries depicted on this map are approximate. They have not been formally delineated or surveyed and are intended for planning purposes only. Additional site-specific evaluation may be needed to confirm/verify information shown on this map.



Areas waterward of the OHWM are designated Aquatic.