

Cities of Aberdeen, Cosmopolis, and Hoquiam
Shoreline Master Program Update

SHORELINE VISIONING WORKSHOP

Wednesday, November 5, 2014
6:00 to 8:00 pm

Rotary Log Pavilion
Morrison Riverfront Park
Aberdeen, WA

Meeting Agenda

1. Welcome and introductions
2. Overview of the SMP update process
3. Findings of the Shoreline Inventory
4. Ways you can be involved in the update
5. Purpose of the topic stations
6. Report back and next steps

Introductions

City of Aberdeen

- Lisa Scott, Director of Community Development

City of Cosmopolis

- Darrin Raines, Public Works/Community Development Director

City of Hoquiam

- Brian Shay, City Manager
- Josh Beach, City Planner

Introductions

AHBL, Inc.

- Brad Medrud, Planning Project Manager
- Annalisa McDaniel, Planner/GIS Analyst

Herrera Environmental

- Jeff Parsons, Senior Scientist

SHORELINE MANAGEMENT ACT

Revised Code of Washington (RCW) 90-58



SHORELINE MASTER PROGRAM GUIDELINES

*Washington Administrative Code (WAC)
173-26*



SHORELINE MASTER PROGRAM

*City's Shoreline Master Program (SMP)
adopted in 1992*

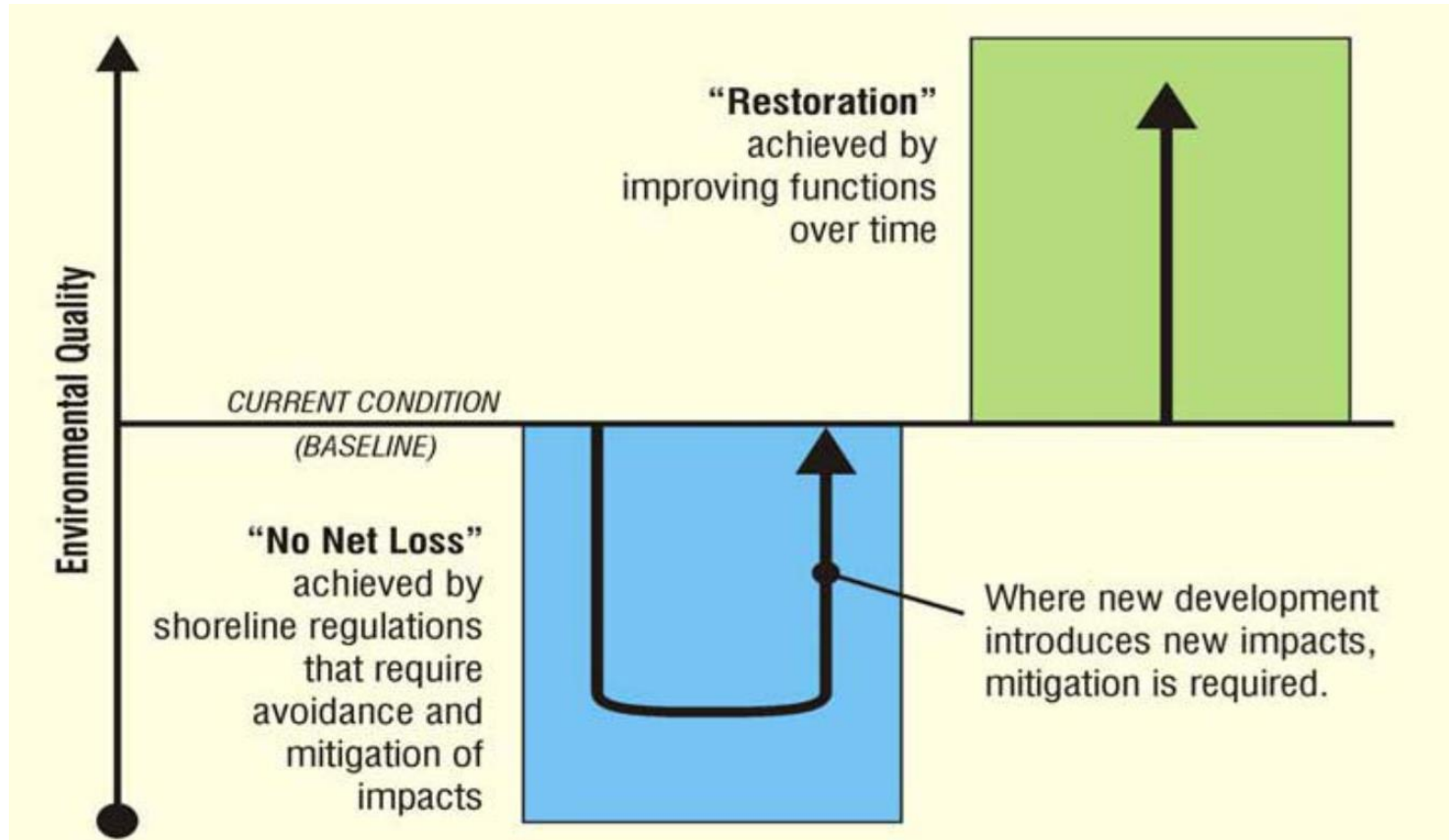
Shoreline Master Program Update

- 2003 State rules require update
- Roles of the City and Ecology
- Updated Shoreline Master Program will:
 - Apply to future development
 - Not apply retroactively
 - Not require changing existing land uses or development

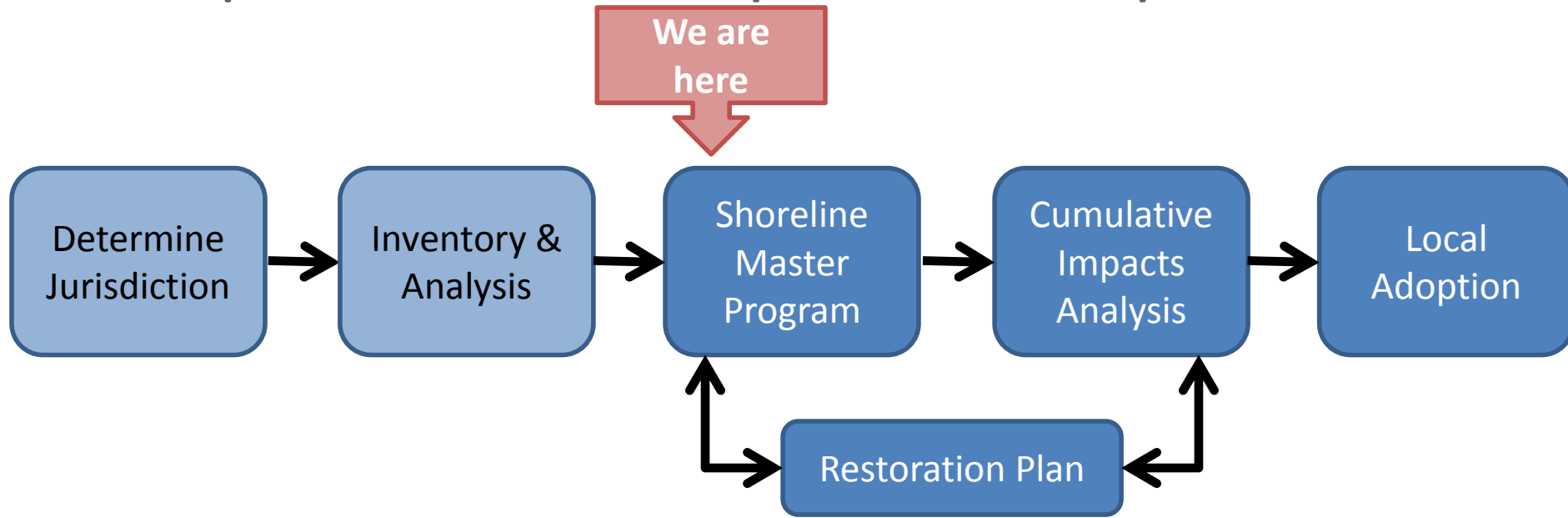
Major Update Requirements

- New requirements for “**no net loss**” and restoration planning
- Preserve and enhance **public access**
- Give preference to “**water-dependent uses**”
- **Public input** throughout update process

No Net Loss & Restoration



Required SMP Update Steps



Public Participation

- Guided by the Public Participation Plan
- Input welcomed through:
 - SMP Update website
 - Citizen Advisory Committee (CAC) and the Technical Advisory Committee (TAC)
 - City staff and consultants
 - Open House
 - Planning Commission and City Council

Citizen Advisory Committee

Who are they?

- Representatives of a cross section of geography, interests, and values

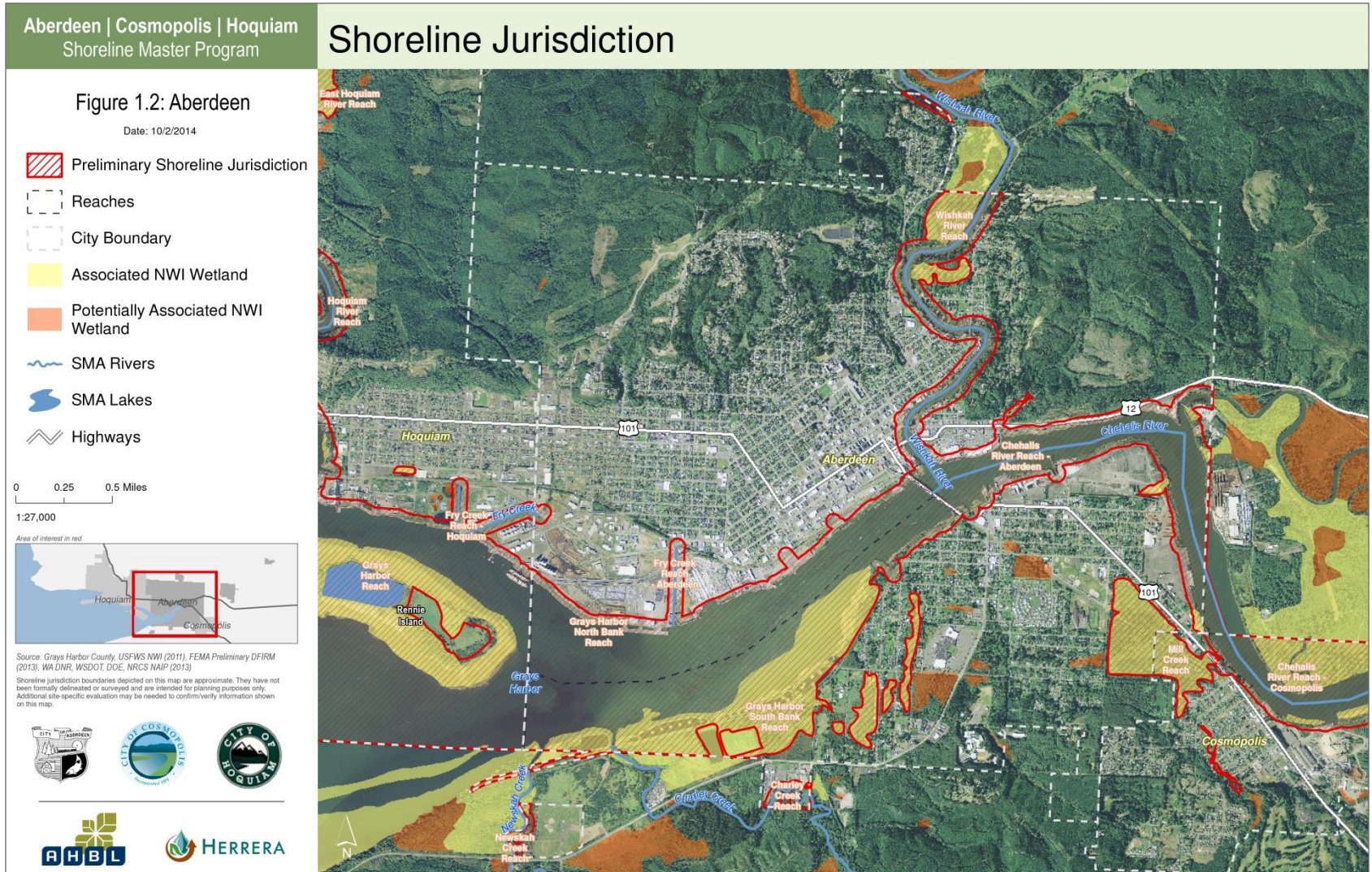
What is their Role?

- Ensure update balances local vision and state law
- Review work products
- Guide policies and regulations

What is the Shoreline Jurisdiction?

- Marine waters
- Lakes and reservoirs greater than 20 acres
- Rivers and creeks - mean annual flow > 20 c.f.s
- Lands extending **200-feet landward** from the ordinary high water mark
- **Floodways and contiguous floodplains** extending 200-feet landward from the ordinary high water mark
- **Associated wetlands**

Shoreline Jurisdiction











Shoreline Jurisdiction

Aberdeen | Cosmopolis | Hoquiam
Shoreline Master Program

Shoreline Jurisdiction

Figure 1.1: Hoquiam

Date: 10/2/2014

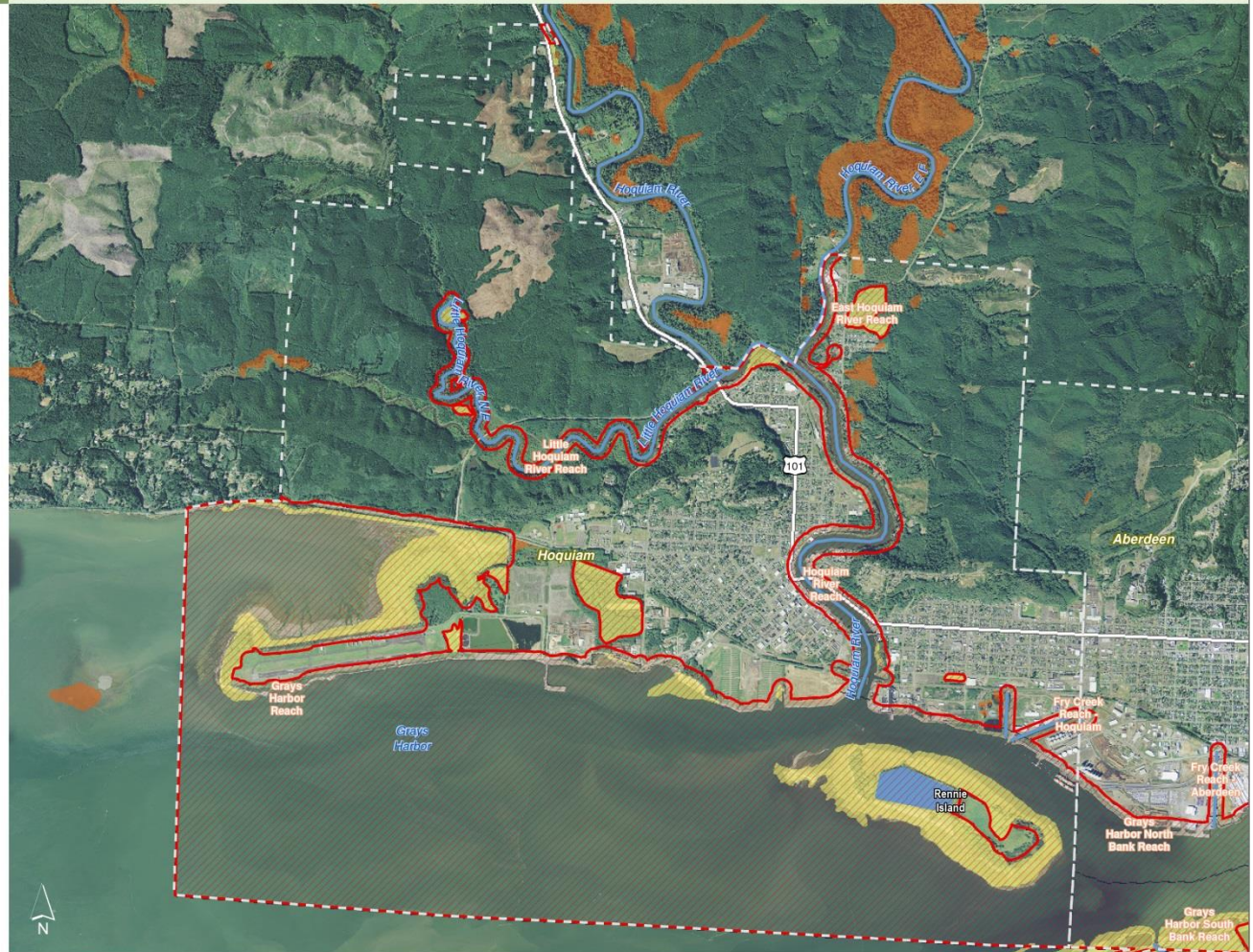
-  Preliminary Shoreline Jurisdiction
-  Reaches
-  City Boundary
-  Associated NWI Wetland
-  Potentially Associated NWI Wetland
-  SMA Rivers
-  SMA Lakes
-  Highways

0 0.25 0.5 Miles
1:33,000

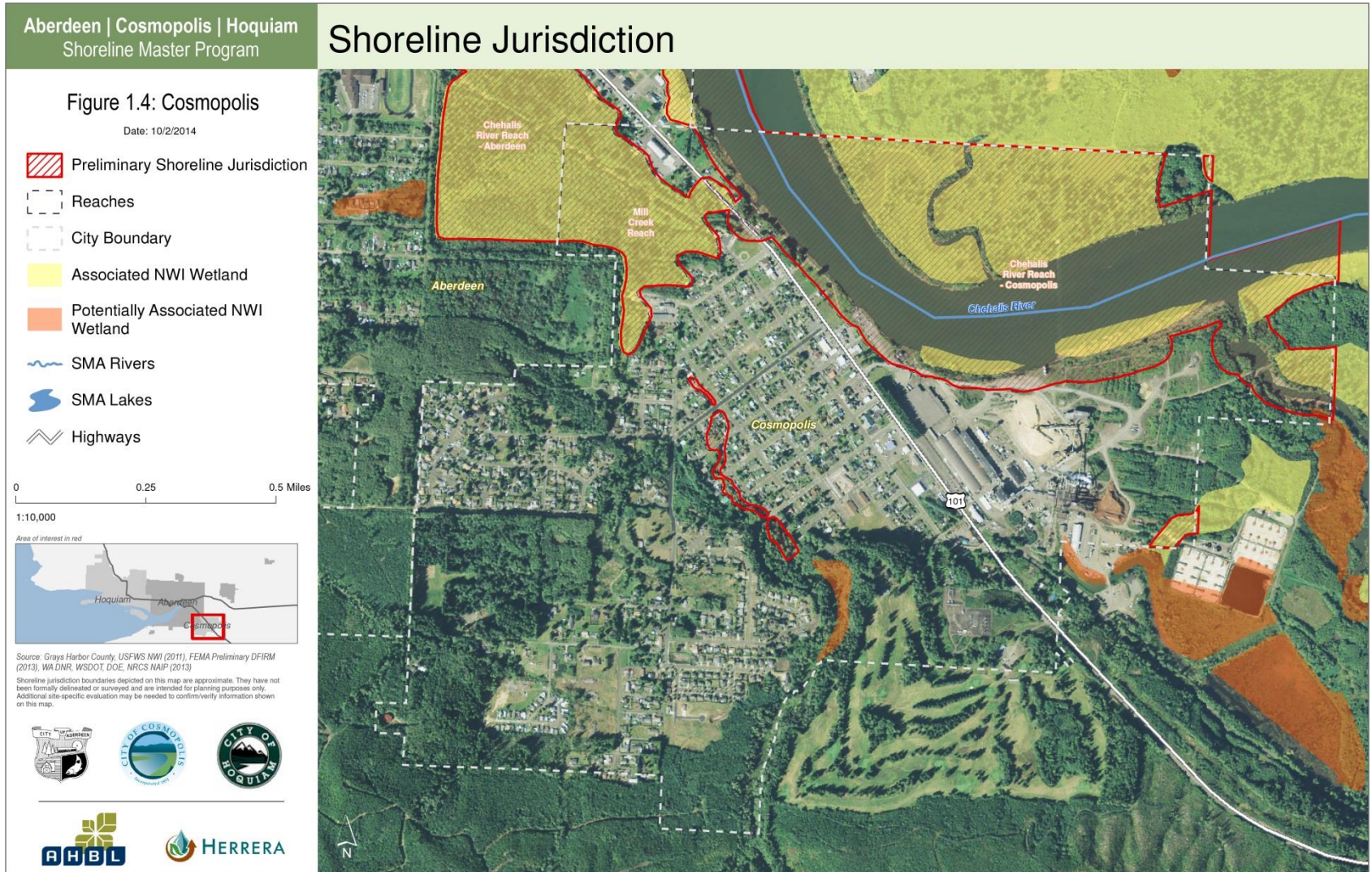


Source: Grays Harbor County USFWS NWI (2011), FEMA Preliminary DFIRM (2013), WA DNR, WSDOT DOE, NRCS NAIP (2013)

Shoreline jurisdiction boundaries depicted on this map are approximate. They have not been formally delineated or surveyed and are intended for planning purposes only. Additional site-specific evaluation may be needed to confirm/verify information shown on this map.



Shoreline Jurisdiction

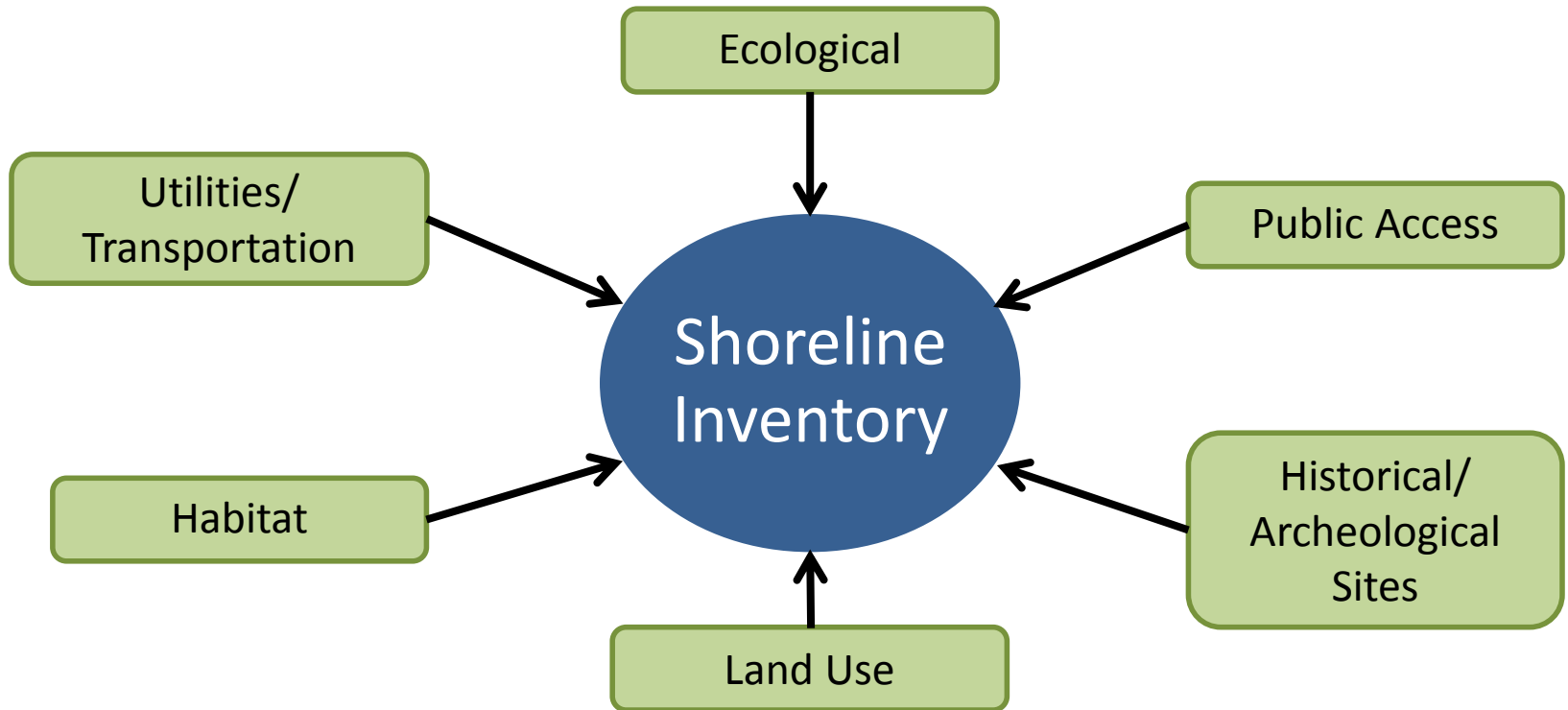


Shoreline Inventory & Analysis

- Scientific basis of the SMP, analyzes:
 - Ecosystems and shoreline functions
 - Shoreline uses
 - Public access
- Describes existing conditions and development patterns
- Establishes the baseline for “No Net Loss”

Shoreline Inventory

Collect all reasonably available existing data:



Uses for the Shoreline Inventory

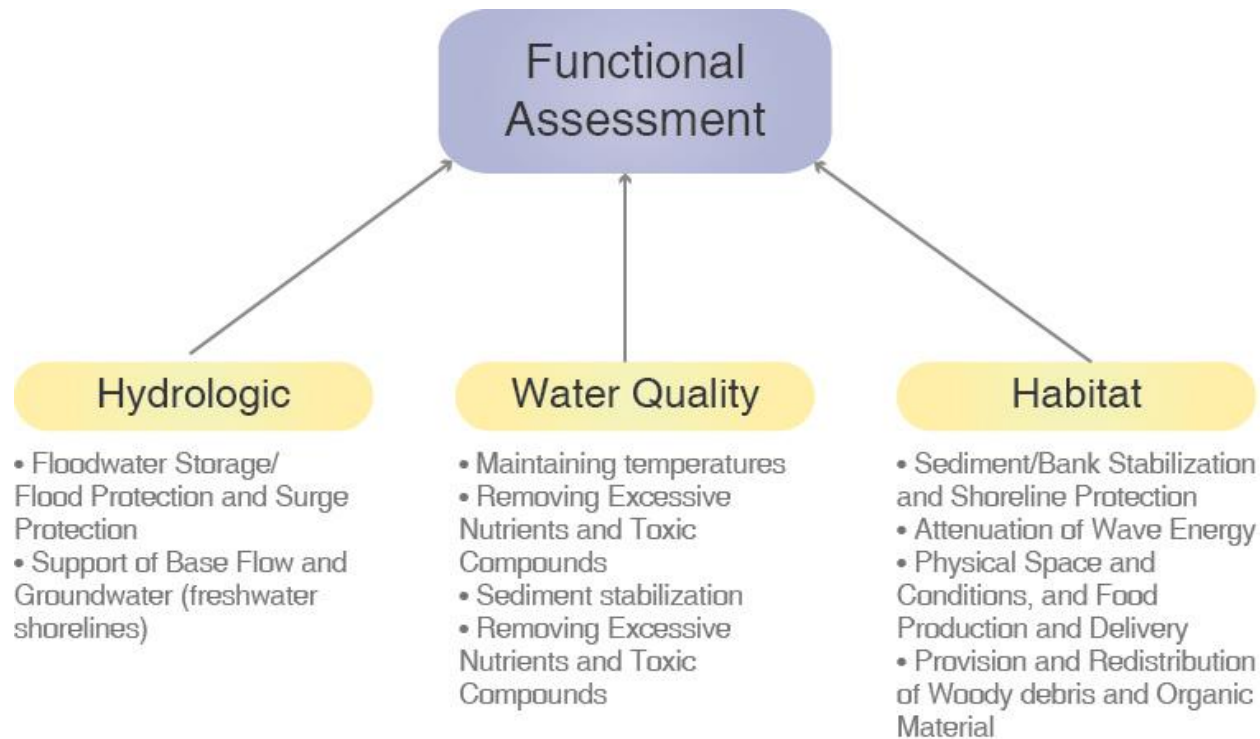
- Basis for environment designations
- Informs development of policies, regulations, and mitigation standards
- Identifies opportunities for restoration

Functional Assessment

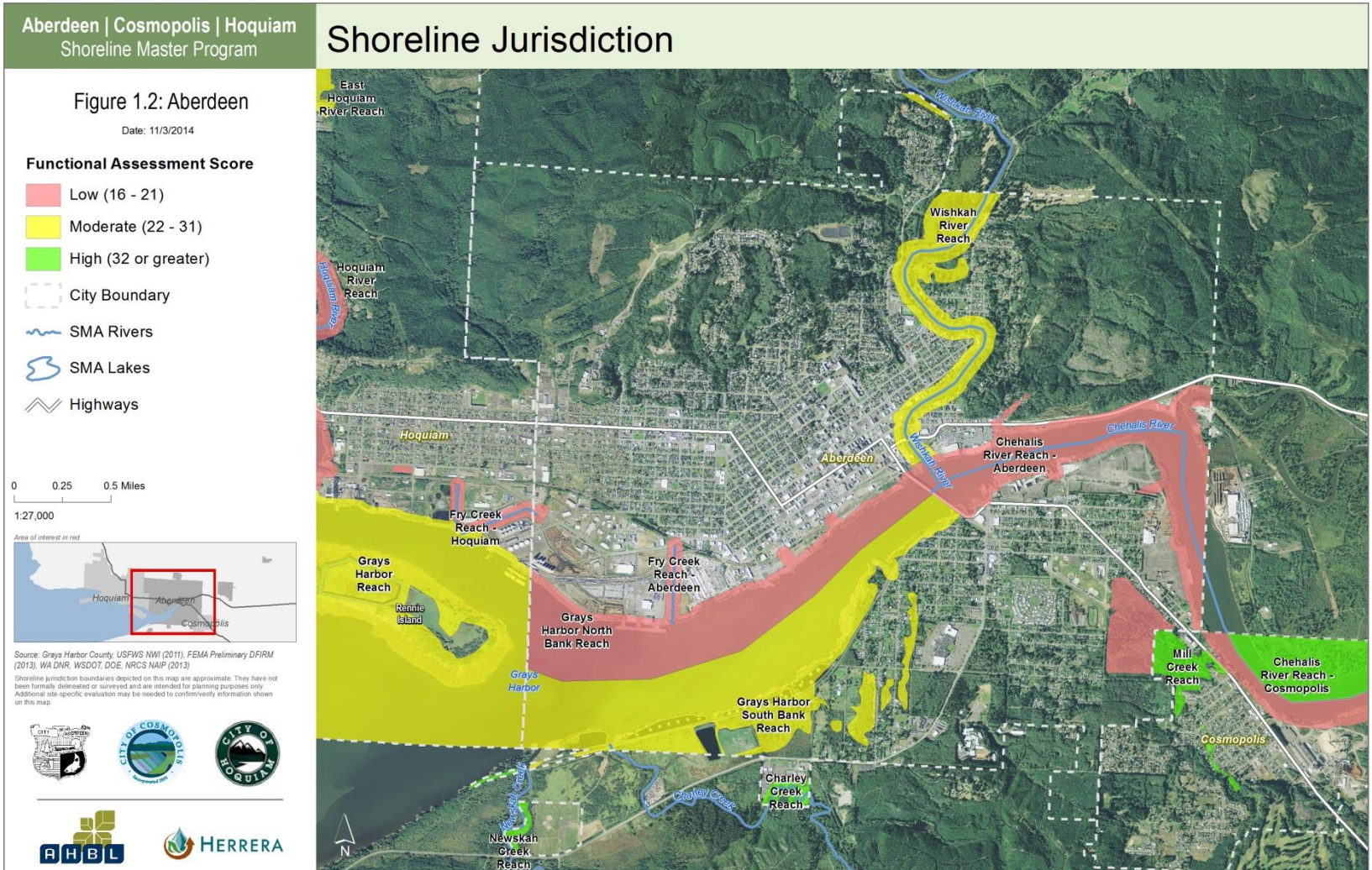
- Purpose: Establish “baseline”
- Assessment on a reach scale
- Uses GIS data and maps, and aerial imagery
- Quantitative to qualitative analysis

Functional Assessment

Used ten criteria in three function groups:



Functional Assessment Score



Functional Assessment Score

Aberdeen | Cosmopolis | Hoquiam
Shoreline Master Program

Shoreline Jurisdiction

Figure 1.1: Hoquiam

Date: 11/3/2014

Functional Assessment Score

- Low (16 - 21)
- Moderate (22 - 31)
- High (32 or greater)

City Boundary

SMA Rivers

SMA Lakes

Highways

0 0.25 0.5 Miles
1:33,000

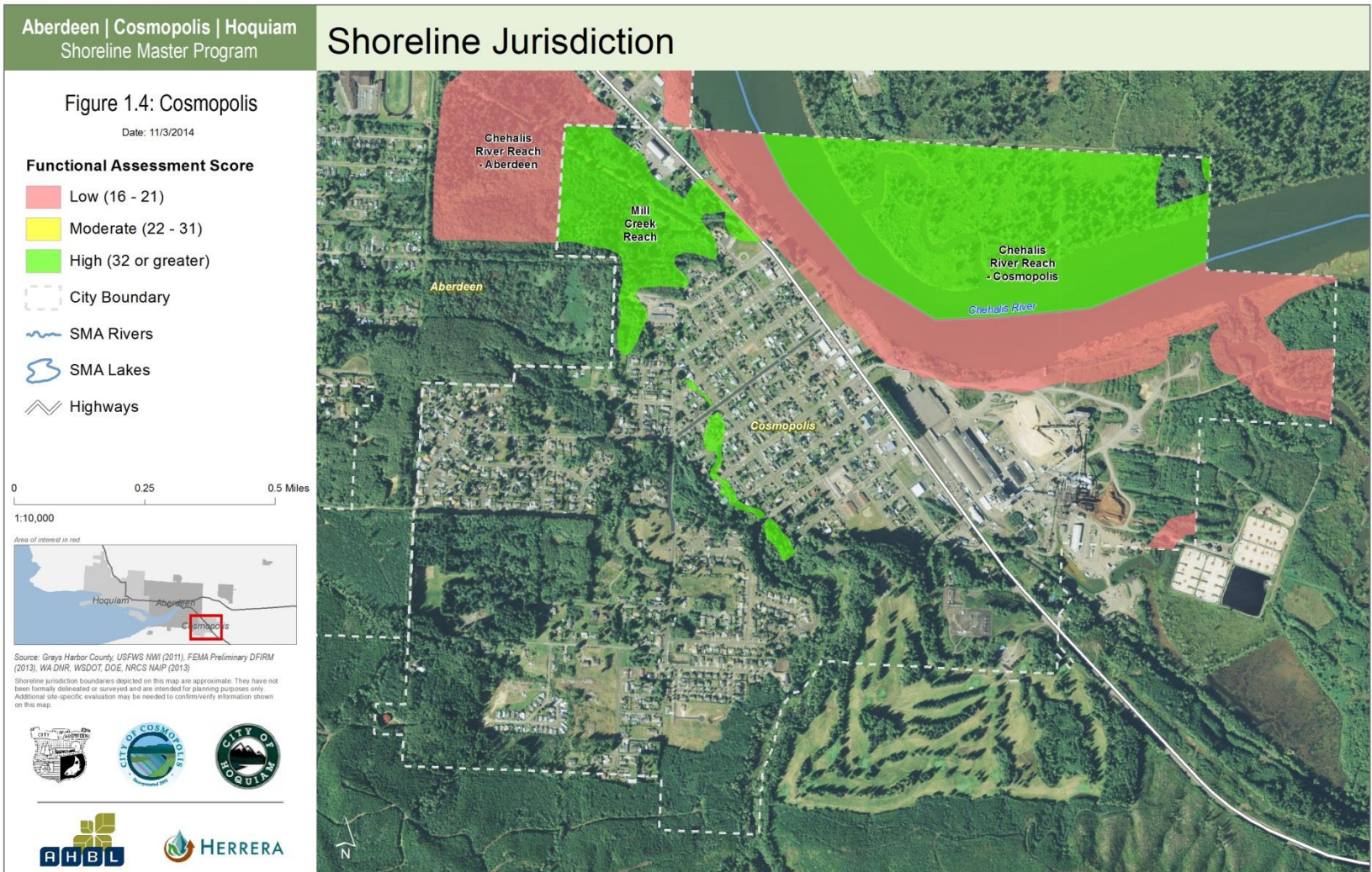


Source: Grays Harbor County USFWS NWI (2011), FEMA Preliminary DFIRM (2013), WA DNR, WSDOT, DOE, NRCS NAIP (2013)

Shoreline jurisdiction boundaries depicted on this map are approximate. They have not been formally delineated or surveyed and are intended for planning purposes only. Additional site-specific evaluation may be needed to confirm/verify information shown on this map.



Functional Assessment Score



Topics to Discuss

- Shoreline Development
- Public Access
- Restoration
- No Net Loss

Next Steps

- **Draft Shoreline Master Program Update**
 - **Community Visioning Process** [November 2014]
 - **Prepare Shoreline Environment Designations** [November 2014]
 - **Prepare Goals, Policies, and Regulations** [November 2014 – January 2015]
 - **Complete Draft SMP** [Winter 2015]

Next Steps

- **Cumulative Impacts Analysis [Winter 2015]**
 - “No Net Loss” Report
- **Restoration Plan [Spring/Summer 2015]**
- **Adoption of the Update [By June 30, 2016]**
 - City Council and Planning Commission public hearings
- **Final review and approval by Ecology [Fall 2016]**
 - Formally adopt Shoreline Master Program

Questions?

Project Contacts:

- Josh Beach, City Planner, JBeach@cityofhoquiam.com
- Lisa Scott, City of Aberdeen, lscott@aberdeenwa.gov
- Darrin Raines, City of Cosmopolis, draines@cosmopolis.us.com
- Brian Shay, City of Hoquiam, bshay@cityofhoquiam.com
- Brad Medrud, AHBL, Inc., bmedrud@ahbl.com
- Kim Van Zwahlenburg, Dept. of Ecology,
kim.vanzwalenburg@ecy.wa.gov

Websites:

https://www.ezview.wa.gov/site/alias_1789/35000/default.aspx

<http://www.ecy.wa.gov/programs/sea/shorelines/index.html>