

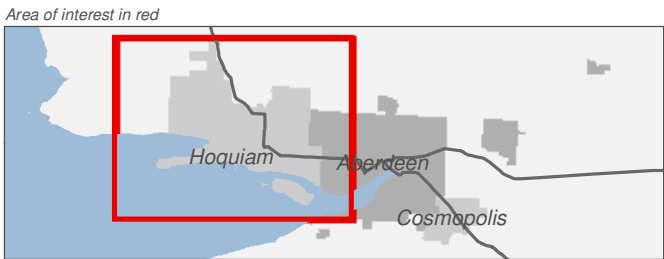
Shoreline Jurisdiction

Figure 1.1: Hoquiam

Date: 10/2/2014

-  Preliminary Shoreline Jurisdiction
-  Reaches
-  City Boundary
-  Associated NWI Wetland
-  Potentially Associated NWI Wetland
-  SMA Rivers
-  SMA Lakes
-  Highways

0 0.25 0.5 Miles
1:33,000



Source: Grays Harbor County, USFWS NWI (2011), FEMA Preliminary DFIRM (2013), WA DNR, WSDOT, DOE, NRCS NAIP (2013)

Shoreline jurisdiction boundaries depicted on this map are approximate. They have not been formally delineated or surveyed and are intended for planning purposes only. Additional site-specific evaluation may be needed to confirm/verify information shown on this map.



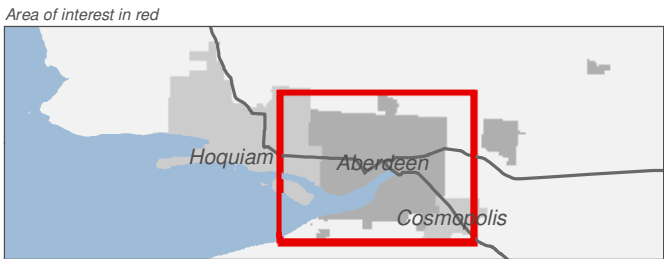
Shoreline Jurisdiction

Figure 1.2: Aberdeen

Date: 10/2/2014

-  Preliminary Shoreline Jurisdiction
-  Reaches
-  City Boundary
-  Associated NWI Wetland
-  Potentially Associated NWI Wetland
-  SMA Rivers
-  SMA Lakes
-  Highways

0 0.25 0.5 Miles
1:27,000



Source: Grays Harbor County, USFWS NWI (2011), FEMA Preliminary DFIRM (2013), WA DNR, WSDOT, DOE, NRCS NAIP (2013)

Shoreline jurisdiction boundaries depicted on this map are approximate. They have not been formally delineated or surveyed and are intended for planning purposes only. Additional site-specific evaluation may be needed to confirm/verify information shown on this map.



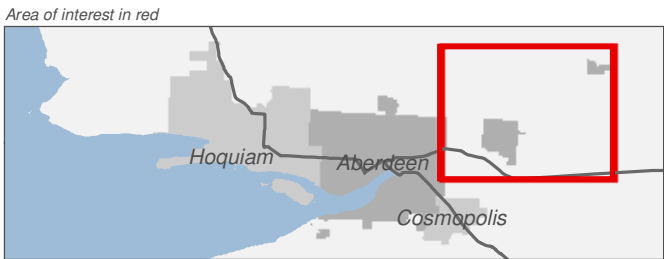
Shoreline Jurisdiction

Figure 1.3: Aberdeen

Date: 10/2/2014

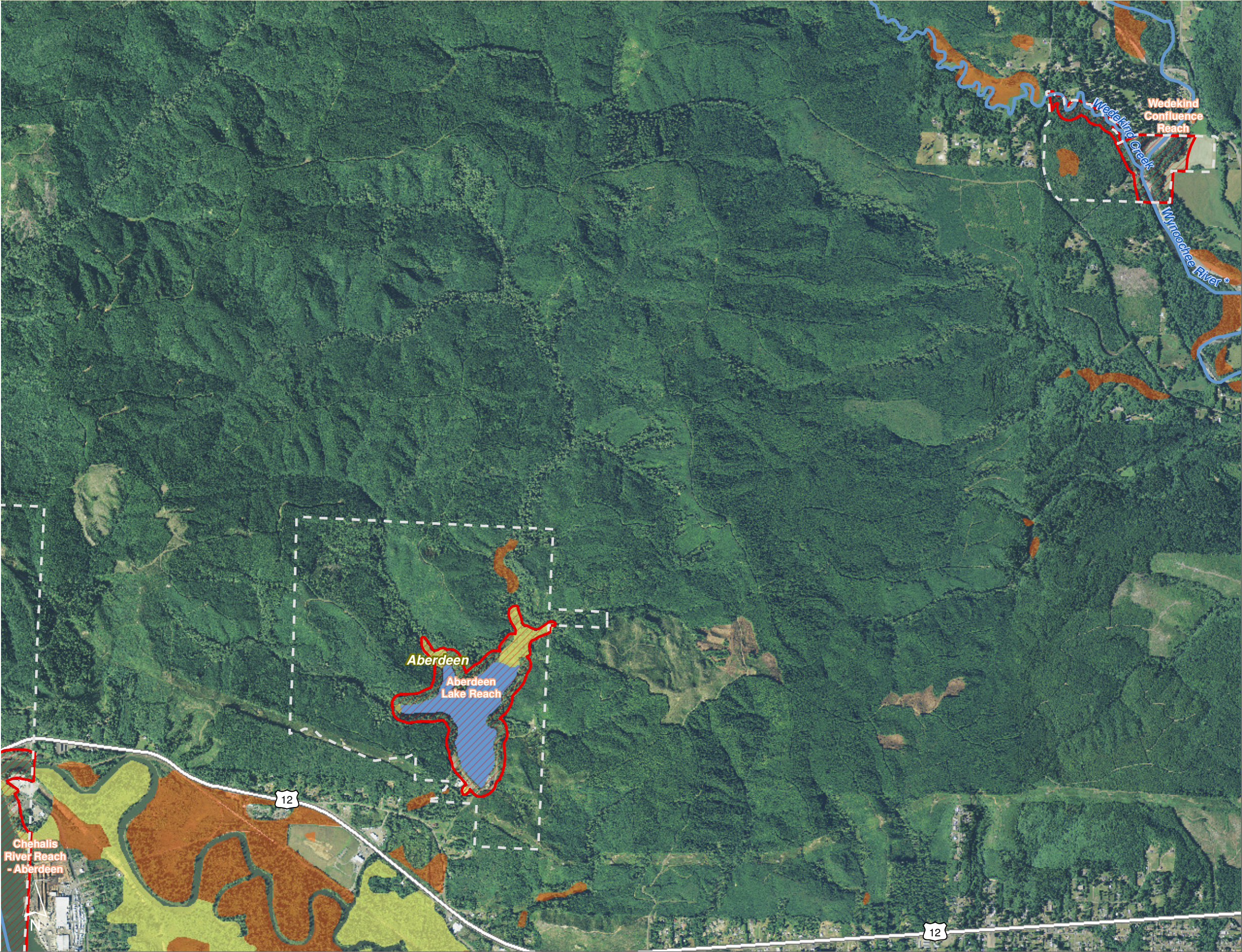
-  Preliminary Shoreline Jurisdiction
-  Reaches
-  City Boundary
-  Associated NWI Wetland
-  Potentially Associated NWI Wetland
-  SMA Rivers
-  SMA Lakes
-  Highways

0 0.25 0.5 Miles
1:24,000



Source: Grays Harbor County, USFWS NWI (2011), FEMA Preliminary DFIRM (2013), WA DNR, WSDOT, DOE, NRCS NAIP (2013)

Shoreline jurisdiction boundaries depicted on this map are approximate. They have not been formally delineated or surveyed and are intended for planning purposes only. Additional site-specific evaluation may be needed to confirm/verify information shown on this map.

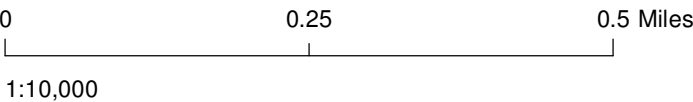


Shoreline Jurisdiction

Figure 1.4: Cosmopolis

Date: 10/2/2014

-  Preliminary Shoreline Jurisdiction
-  Reaches
-  City Boundary
-  Associated NWI Wetland
-  Potentially Associated NWI Wetland
-  SMA Rivers
-  SMA Lakes
-  Highways



Source: Grays Harbor County, USFWS NWI (2011), FEMA Preliminary DFIRM (2013), WA DNR, WSDOT, DOE, NRCS NAIP (2013)


Shoreline jurisdiction boundaries depicted on this map are approximate. They have not been formally delineated or surveyed and are intended for planning purposes only. Additional site-specific evaluation may be needed to confirm/verify information shown on this map.




Floodway, Floodplain, and Wetlands


Figure 2.1: Hoquiam


Date: 10/2/2014

 Preliminary Shoreline Jurisdiction


 City Boundary


FEMA Preliminary DFIRM

 Floodway

 100-Year Floodplain

NWI Wetland by Type

 Estuarine and Marine Wetland

 Freshwater Emergent Wetland

 Freshwater Forested/Shrub Wetland

 SMA Rivers

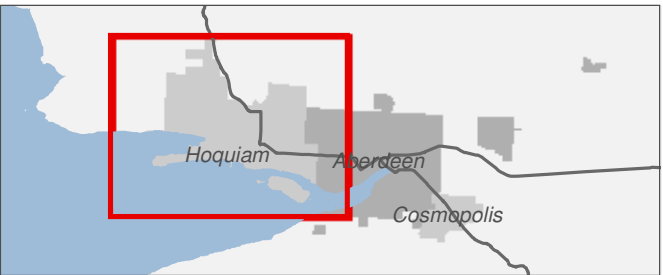
 SMA Lakes

 Highways

0 0.25 0.5 Miles

1:33,000

Area of interest in red



Source: Grays Harbor County, USFWS NWI (2011), FEMA Preliminary DFIRM (2013), WA DNR, WSDOT, DOE, NRCS NAIP (2013)


Shoreline jurisdiction boundaries depicted on this map are approximate. They have not been formally delineated or surveyed and are intended for planning purposes only. Additional site-specific evaluation may be needed to confirm/verify information shown on this map.



Floodway, Floodplain, and Wetlands


Figure 2.2: Aberdeen


Date: 10/2/2014

 Preliminary Shoreline Jurisdiction


 City Boundary


FEMA Preliminary DFIRM

 Floodway

 100-Year Floodplain

NWI Wetland by Type

 Estuarine and Marine Wetland

 Freshwater Emergent Wetland

 Freshwater Forested/Shrub Wetland

 SMA Rivers

 SMA Lakes

 Highways

0 0.25 0.5 Miles

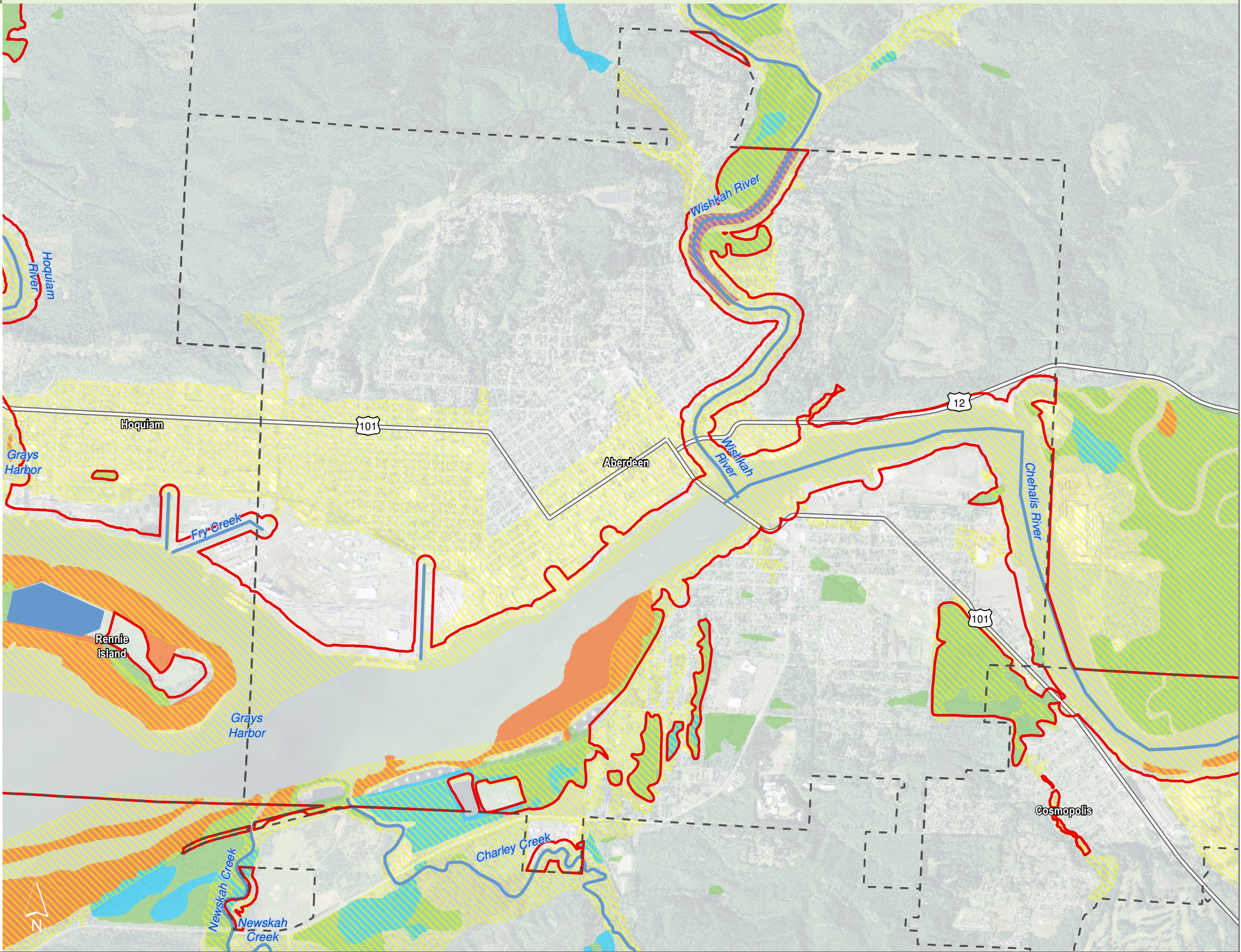
1:27,000

Area of interest in red



Source: Grays Harbor County, USFWS NWI (2011), FEMA Preliminary DFIRM (2013), WA DNR, WSDOT, DOE, NRCS NAIP (2013)

Shoreline jurisdiction boundaries depicted on this map are approximate. They have not been formally delineated or surveyed and are intended for planning purposes only. Additional site-specific evaluation may be needed to confirm/verify information shown on this map.



Floodway, Floodplain, and Wetlands

Figure 2.3: Aberdeen

Date: 10/2/2014

- Preliminary Shoreline Jurisdiction
- City Boundary
- FEMA Preliminary DFIRM**
 - Floodway
 - 100-Year Floodplain
- NWI Wetland by Type**
 - Estuarine and Marine Wetland
 - Freshwater Emergent Wetland
 - Freshwater Forested/Shrub Wetland
- SMA Rivers
- SMA Lakes
- Highways

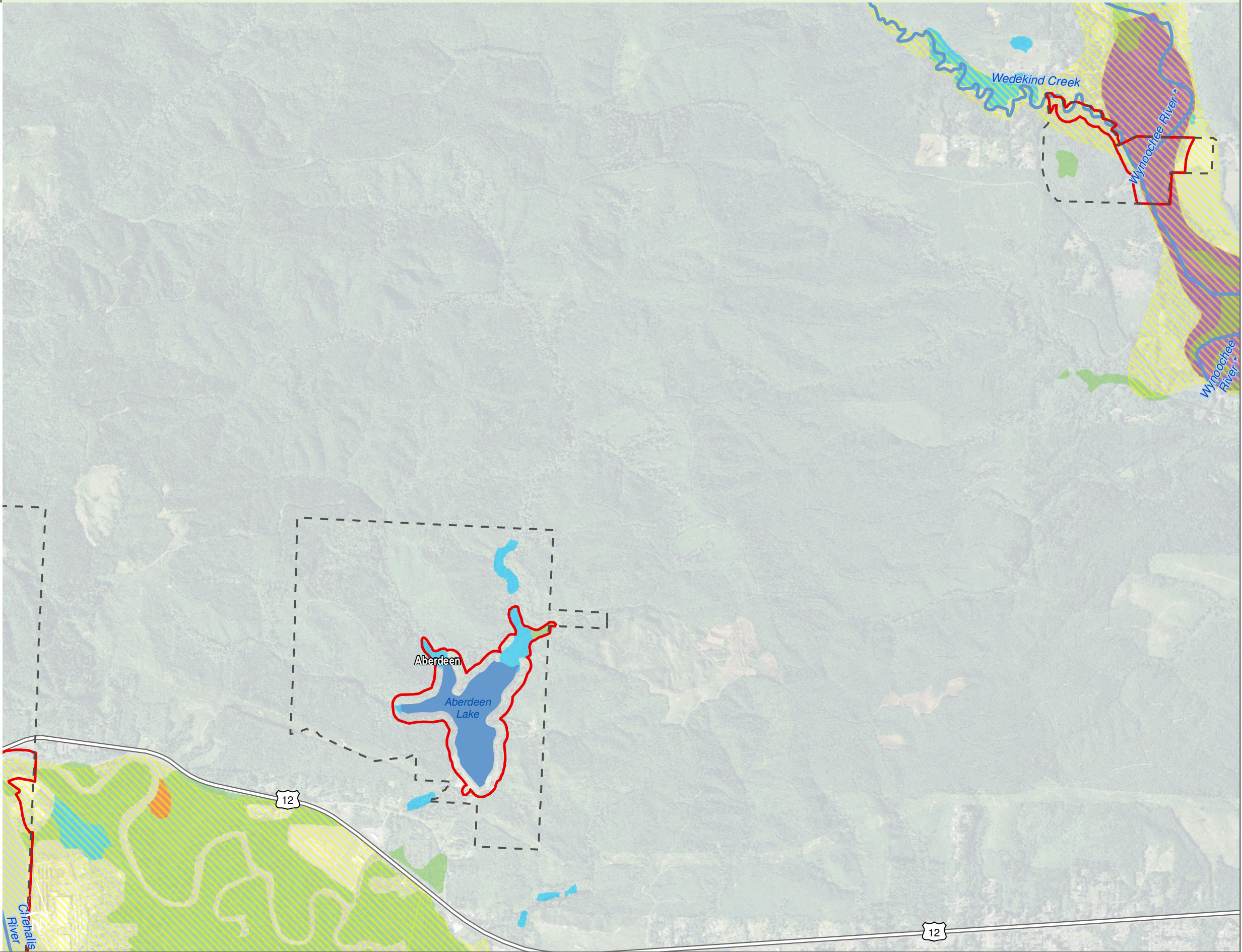
0 0.25 0.5 Miles

1:24,000
Area of interest in red



Source: Grays Harbor County, USFWS NWI (2011), FEMA Preliminary DFIRM (2013), WA DNR, WSDOT, DOE, NRCS NAIP (2013)

Shoreline jurisdiction boundaries depicted on this map are approximate. They have not been formally delineated or surveyed and are intended for planning purposes only. Additional site-specific evaluation may be needed to confirm/verify information shown on this map.



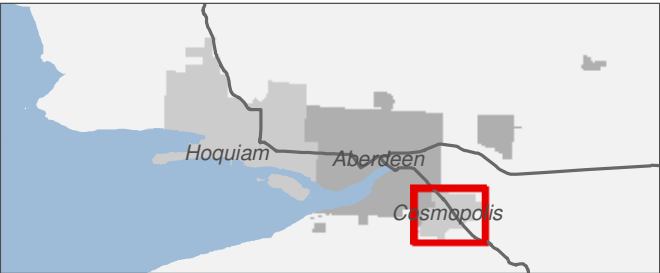
Floodway, Floodplain, and Wetlands

Figure 2.4: Cosmopolis

Date: 10/2/2014

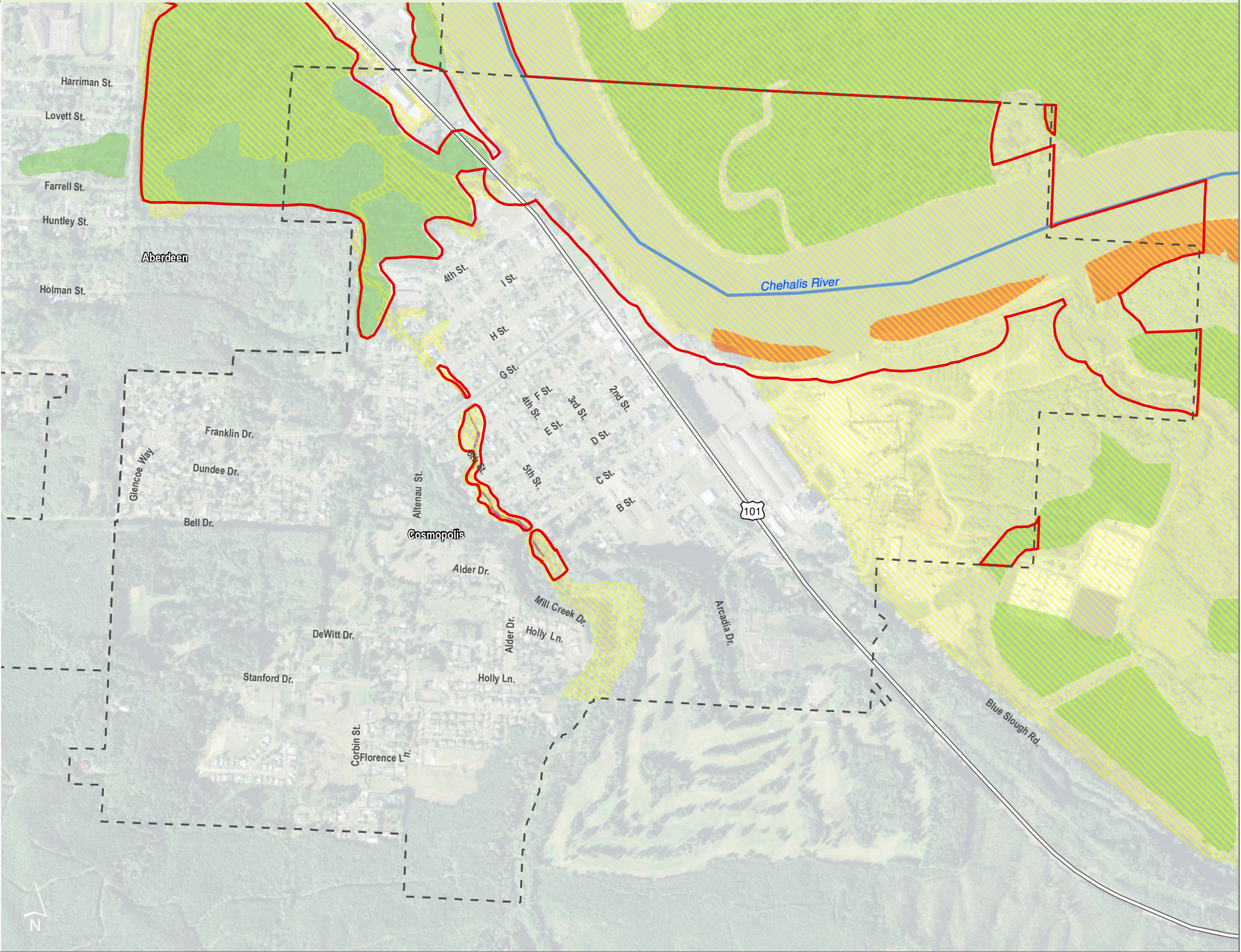
- Preliminary Shoreline Jurisdiction
- City Boundary
- FEMA Preliminary DFIRM**
 - Floodway
 - 100-Year Floodplain
- NWI Wetland by Type**
 - Estuarine and Marine Wetland
 - Freshwater Forested/Shrub Wetland
- SMA Rivers
- SMA Lakes
- Highways

0 0.25 0.5 Miles
1:10,000
Area of interest in red



Source: Grays Harbor County, USFWS NWI (2011), FEMA Preliminary DFIRM (2013), WA DNR, WSDOT, DOE, NRCS NAIP (2013)

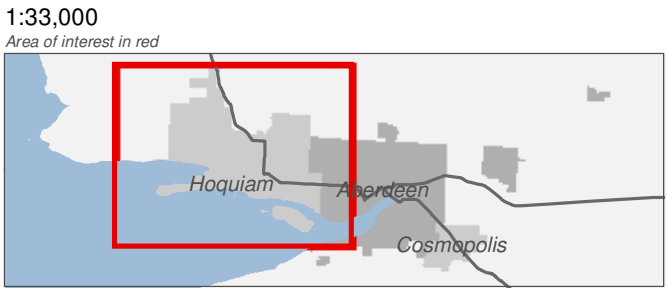
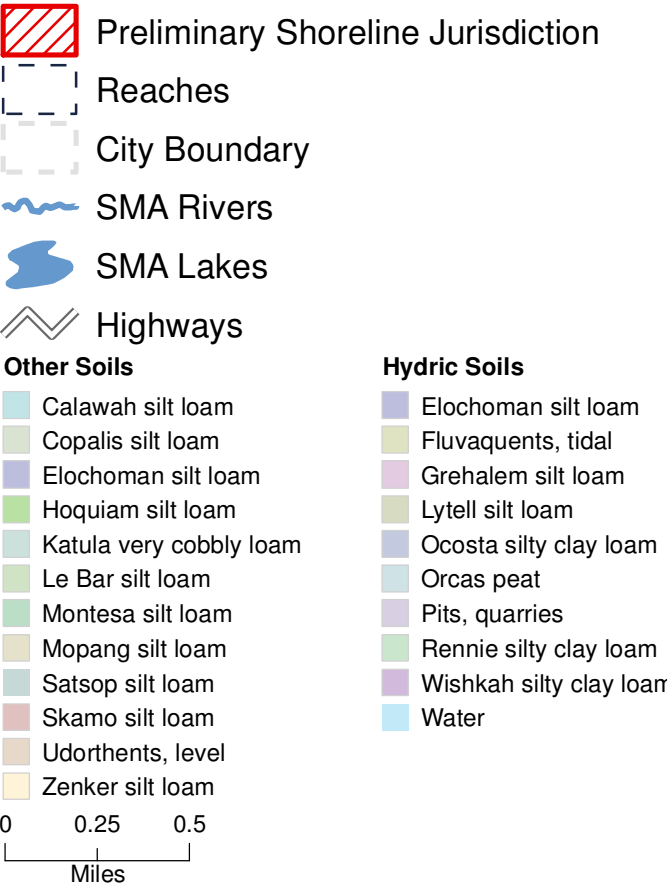
Shoreline jurisdiction boundaries depicted on this map are approximate. They have not been formally delineated or surveyed and are intended for planning purposes only. Additional site-specific evaluation may be needed to confirm/verify information shown on this map.



Soils

Figure 3.1: Hoquiam

Date: 10/2/2014



Source: Grays Harbor County, USFWS NWI (2011), FEMA Preliminary DFIRM (2013), DNR, WSDOT, Ecology, NRCS NAIP

Shoreline jurisdiction boundaries depicted on this map are approximate. They have not been formally delineated or surveyed and are intended for planning purposes only. Additional site-specific evaluation may be needed to confirm/verify information shown on this map.



Soils

Figure 3.2: Aberdeen

Date: 10/2/2014

- Preliminary Shoreline Jurisdiction
- Reaches
- City Boundary
- SMA Rivers
- SMA Lakes
- Highways

- Other Soils**

 - Calawah silt loam
 - Elochoman silt loam
 - Hoquiam silt loam
 - Ilwaco silt loam
 - Lytell silt loam
 - Montesa silt loam
 - Mopang silt loam
 - Narel silt loam
 - Skamo silt loam
 - Udorthents, level
 - Zenker silt loam
- Hydric Soils**

 - Aabab silt loam
 - Astoria silt loam
 - Elochoman silt loam
 - Fluvaquents, tidal
 - Lytell silt loam
 - Ocosta silty clay loam
 - Orcas peat
 - Pits, gravel
 - Rennie silty clay loam
 - Seastrand mucky peat
 - Water

0 0.25 0.5
Miles

1:27,000

Area of interest in red



Source: Grays Harbor County, USFWS NWI (2011), FEMA Preliminary DFIRM (2013), DNR, WSDOT, Ecology, NRCS NAIP

Shoreline jurisdiction boundaries depicted on this map are approximate. They have not been formally delineated or surveyed and are intended for planning purposes only. Additional site-specific evaluation may be needed to confirm/verify information shown on this map.



Date: 10/2/2014

- Other Soils**

 - Copalis silt loam
 - Elochoman silt loam
 - Hoquiam silt loam
 - Juno sandy loam
 - Le Bar silt loam
 - Lyre very gravelly loamy sand
 - Lytell silt loam
 - Skamo silt loam
 - Udorthents, level
 - Zenker silt loam

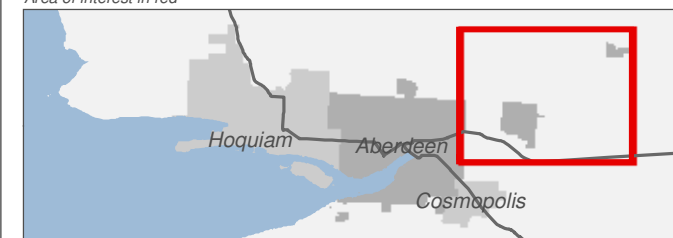
Hydric Soils

 - Astoria silt loam
 - Chehalis silt loam
 - Copalis silt loam
 - Elochoman silt loam
 - Grehalem silt loam
 - Lytell silt loam
 - Nemah silty clay loam
 - Ocosta silty clay loam
 - Orcas peat
 - Pits, gravel
 - Rennie silty clay loam
 - Riverwash
 - Salzer silty clay
 - Wishkah silty clay loam
 - Water

0 0.25 0.5
Miles

1:24,000

Area of interest in red



Shoreline jurisdiction boundaries depicted on this map are approximate. They have not been formally delineated or surveyed and are intended for planning purposes only. Additional site-specific evaluation may be needed to confirm/verify information shown on this map.



Soils

Figure 3.4: Cosmopolis

Date: 10/2/2014

Preliminary Shoreline Jurisdiction

Reaches

City Boundary

SMA Rivers

SMA Lakes

Highways

Other Soils

Calawah silt loam

Ilwaco silt loam

Mopang silt loam

Narel silt loam

Udorthents, level

Hydric Soils

Fluvaquents, tidal

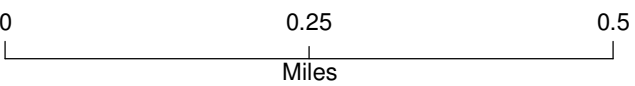
Ocosta silty clay loam

Orcas peat

Palix silt loam

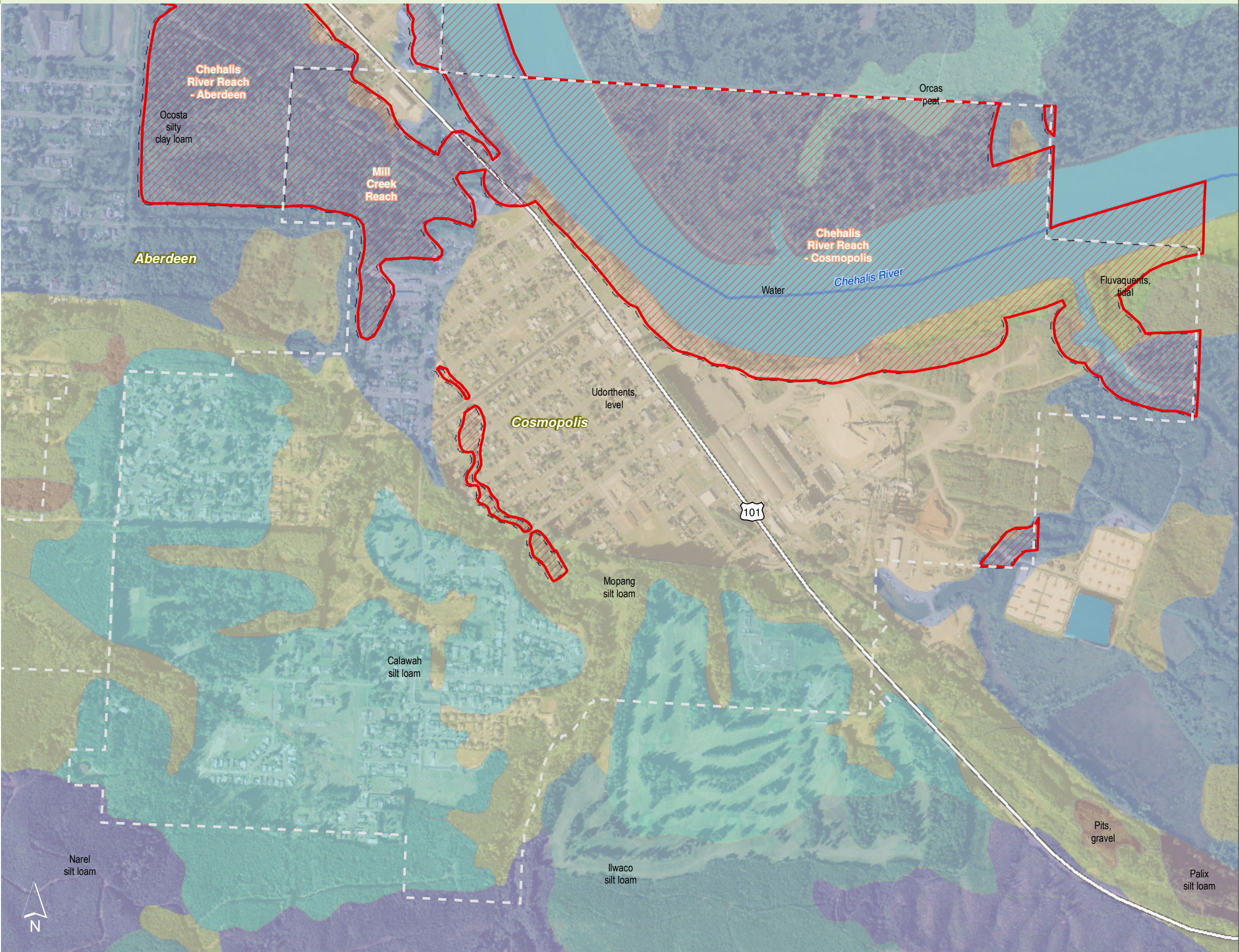
Pits, gravel

Water



Source: Grays Harbor County, USFWS NWI (2011), FEMA Preliminary DFIRM (2013), DNR, WSDOT, Ecology, NRCS NAIP

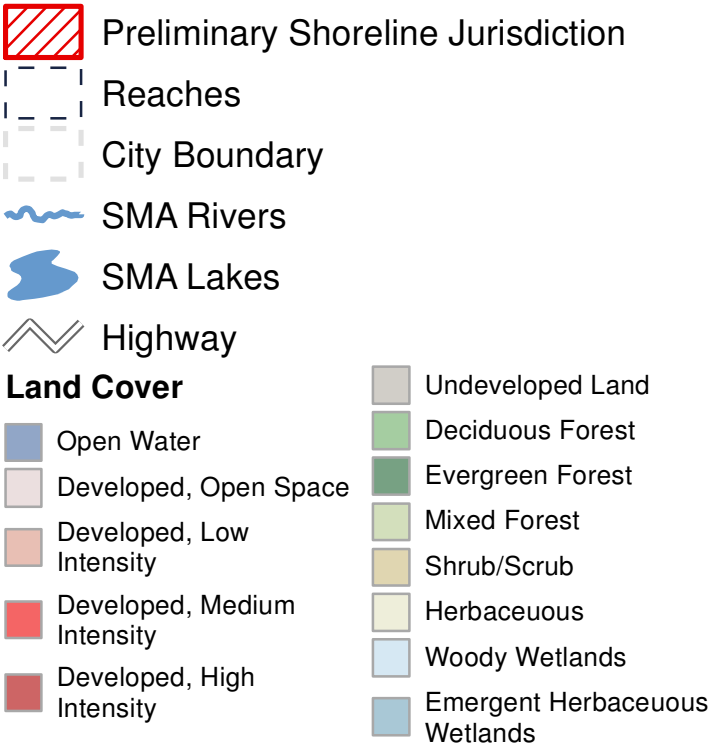
Shoreline jurisdiction boundaries depicted on this map are approximate. They have not been formally delineated or surveyed and are intended for planning purposes only. Additional site-specific evaluation may be needed to confirm/verify information shown on this map.



Land Cover

Figure 4.1: Hoquiam

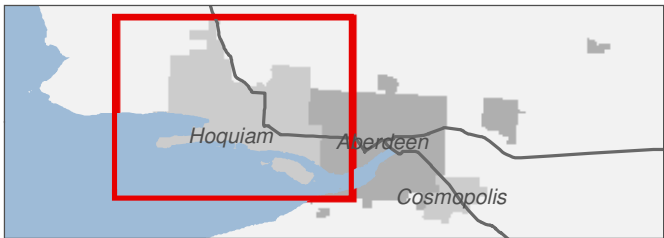
Date: 10/2/2014



0 0.25 0.5 Miles

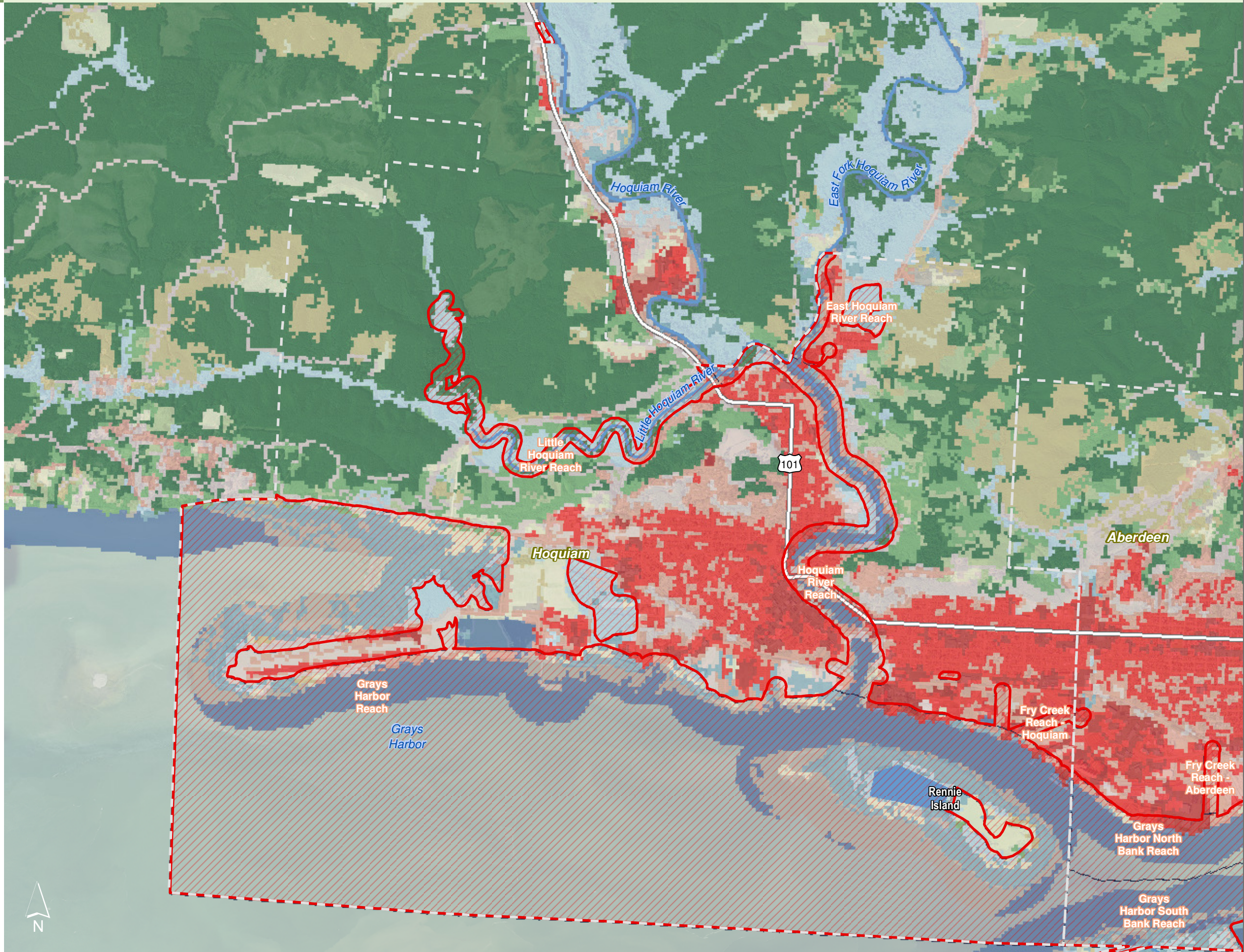
1:33,000

Area of interest in red



Source: USGS NLCD (2006), Grays Harbor Co., GHCG, USFWS NWI, FEMA, WA DNR, WSDOT, DOE, NRCS NAIP

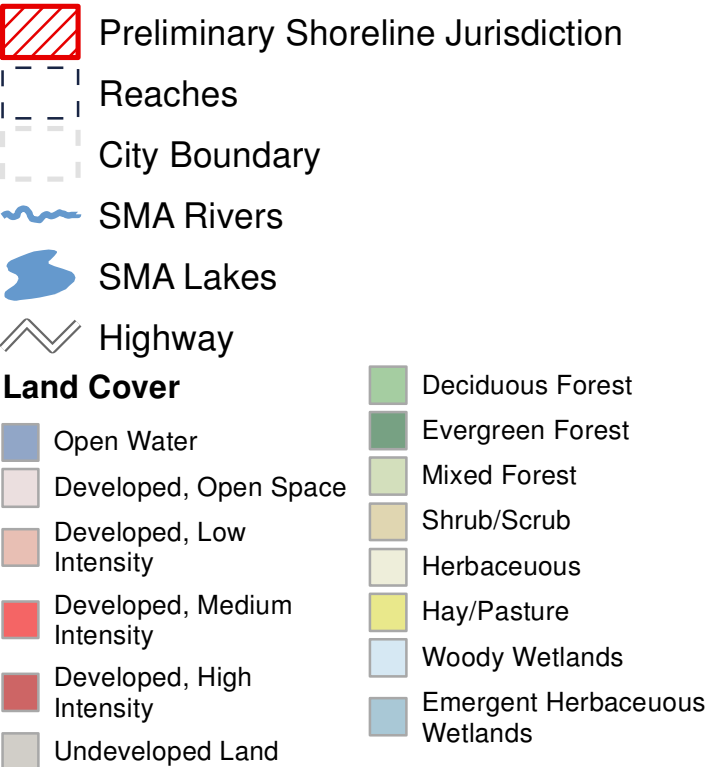
Shoreline jurisdiction boundaries depicted on this map are approximate. They have not been formally delineated or surveyed and are intended for planning purposes only. Additional site-specific evaluation may be needed to confirm/verify information shown on this map.



Land Cover

Figure 4.2: Aberdeen

Date: 10/2/2014



0 0.25 0.5 Miles

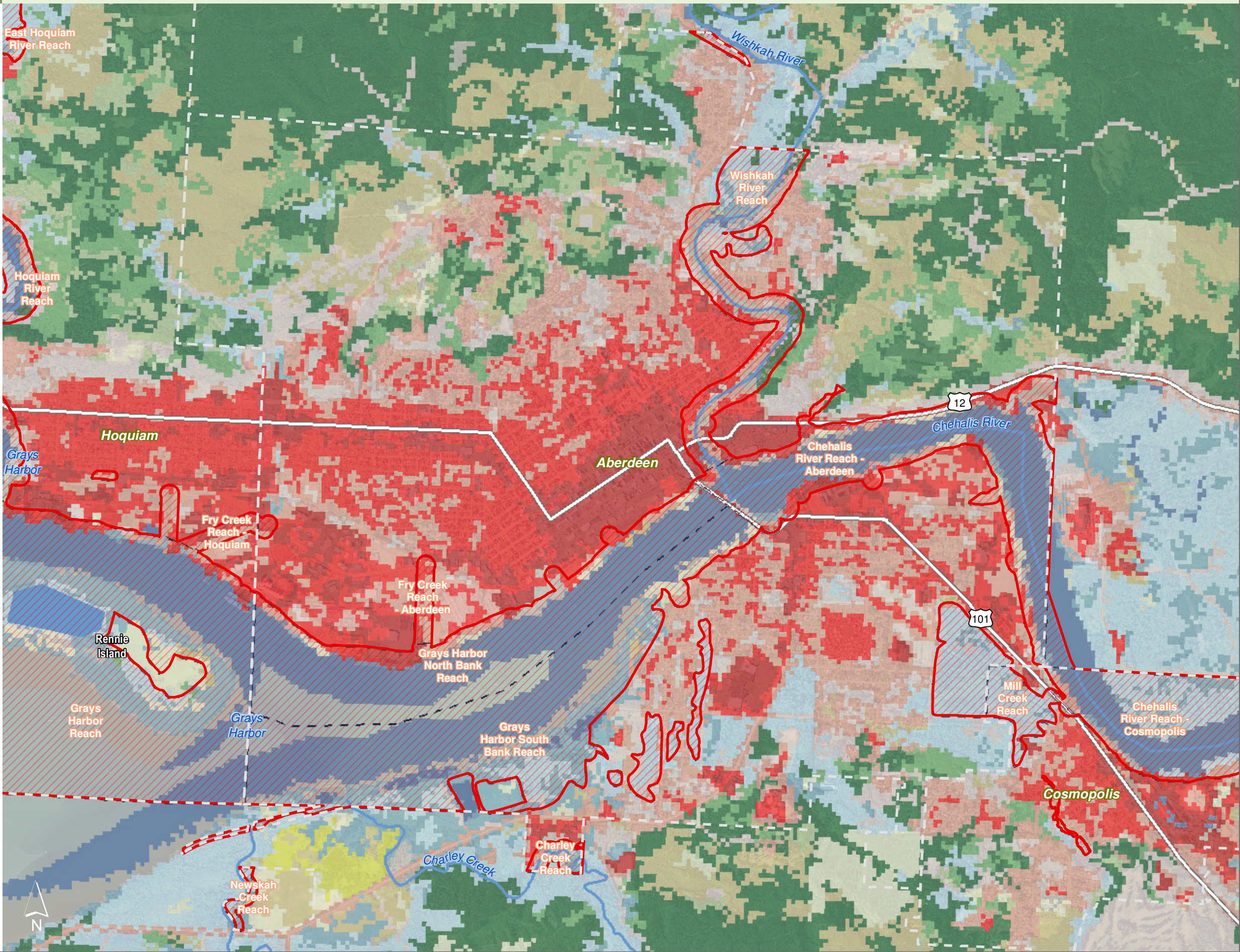
1:27,000

Area of interest in red



Source: USGS NLCD (2006), Grays Harbor Co., GHCG, USFWS NWI, FEMA, WA DNR, WSDOT, DOE, NRCS NAIP

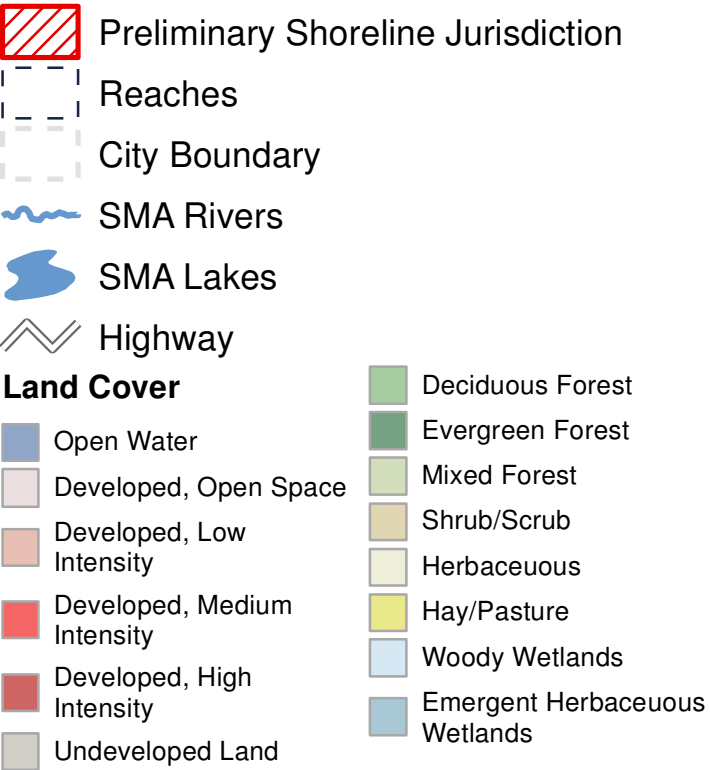
Shoreline jurisdiction boundaries depicted on this map are approximate. They have not been formally delineated or surveyed and are intended for planning purposes only. Additional site-specific evaluation may be needed to confirm/verify information shown on this map.



Land Cover

Figure 4.3: Aberdeen

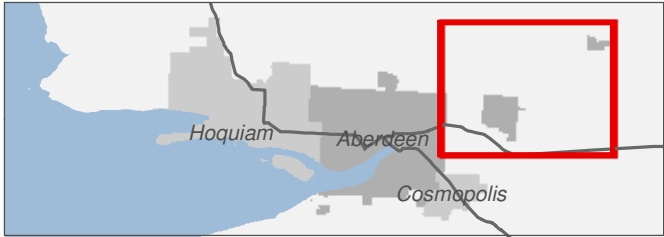
Date: 10/2/2014



0 0.25 0.5 Miles

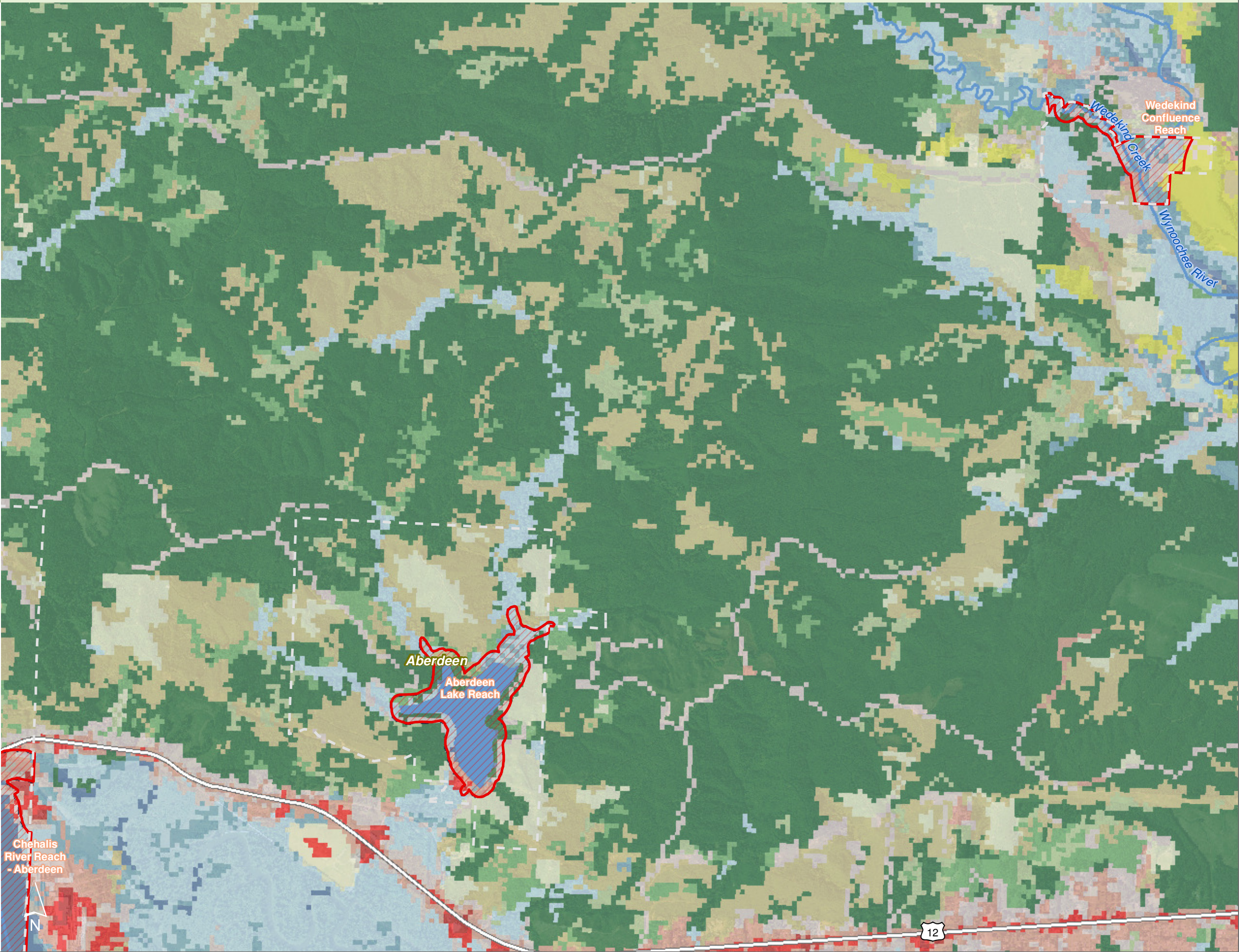
1:24,000

Area of interest in red



Source: USGS NLCD (2006), Grays Harbor Co., GHCG, USFWS NWI, FEMA, WA DNR, WSDOT, DOE, NRCS NAIP

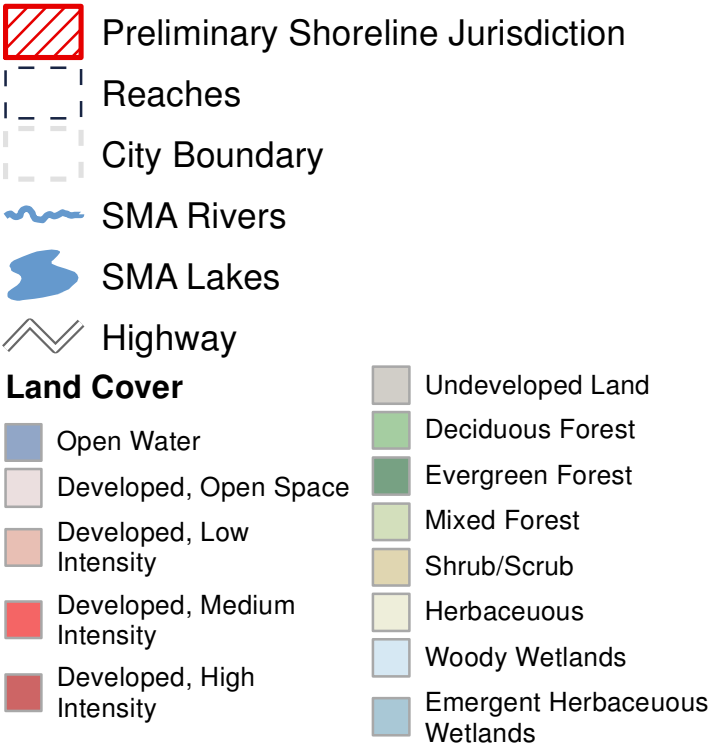
Shoreline jurisdiction boundaries depicted on this map are approximate. They have not been formally delineated or surveyed and are intended for planning purposes only. Additional site-specific evaluation may be needed to confirm/verify information shown on this map.



Land Cover

Figure 4.4: Cosmopolis

Date: 10/2/2014

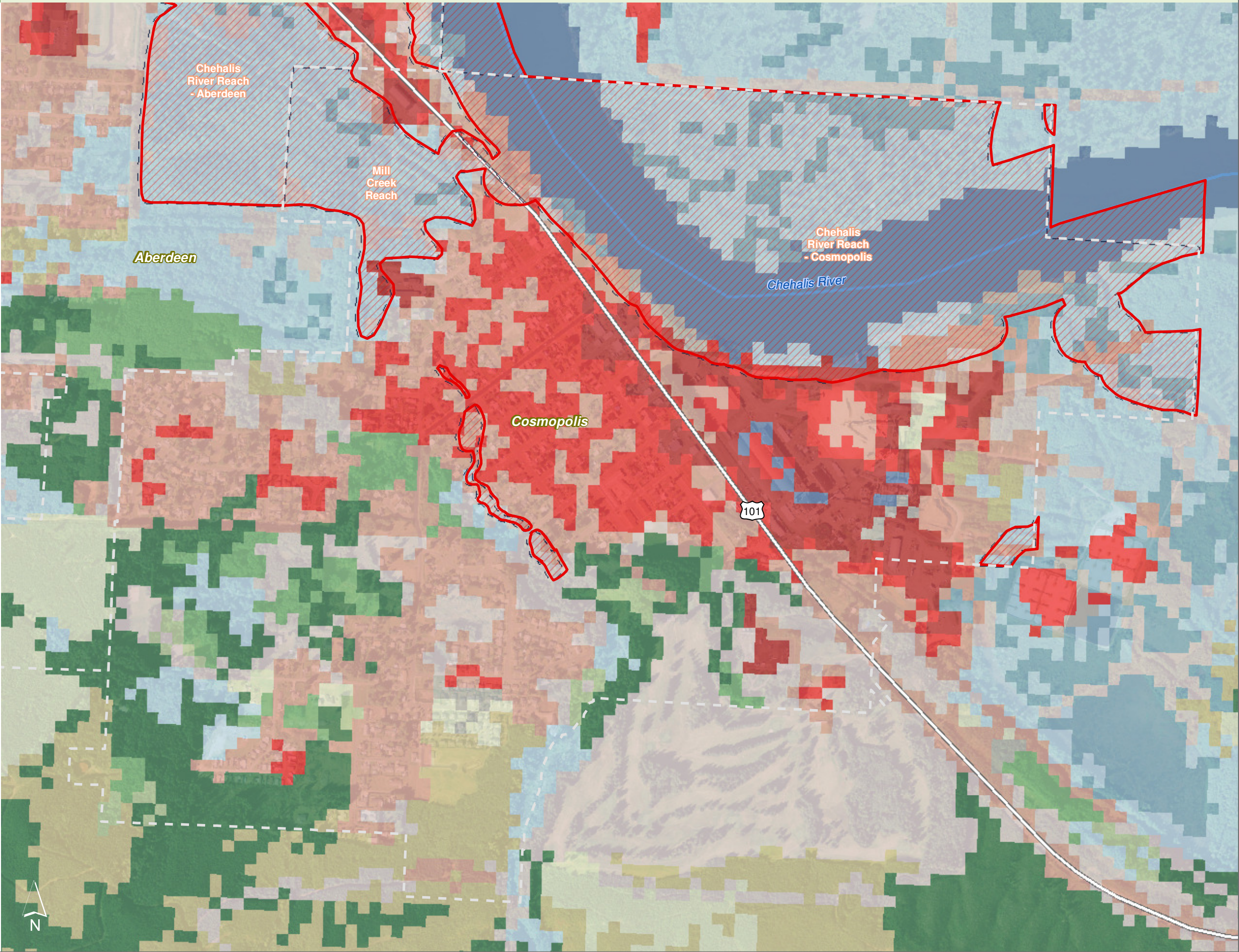


0 0.25 0.5 Miles



Source: USGS NLCD (2006), Grays Harbor Co., GHCG, USFWS NWI, FEMA, WA DNR, WSDOT, DOE, NRCS NAIP

Shoreline jurisdiction boundaries depicted on this map are approximate. They have not been formally delineated or surveyed and are intended for planning purposes only. Additional site-specific evaluation may be needed to confirm/verify information shown on this map.



Shoreline Modification

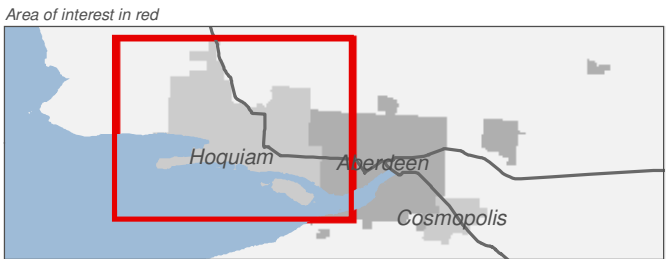
Figure 5.1: Hoquiam

Date: 10/2/2014

Shoreline Modified

- Armored
- Over Water Structure
- Levees
- Dams
- Preliminary Shoreline Jurisdiction
- Reaches
- City Boundary
- SMA Rivers
- SMA Lakes
- Highways

0 0.25 0.5 Miles
1:33,000



Source: Grays Harbor County, USFWS NWI (2011), FEMA Preliminary DFIRM (2013), WA DNR, WSDOT, DOE, NRCS NAIP (2013)

Shoreline jurisdiction boundaries depicted on this map are approximate. They have not been formally delineated or surveyed and are intended for planning purposes only. Additional site-specific evaluation may be needed to confirm/verify information shown on this map.



Shoreline Modification

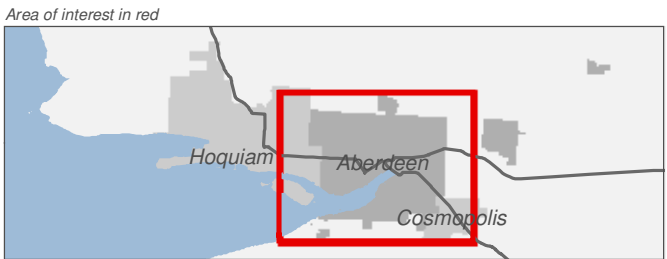
Figure 5.2: Aberdeen

Date: 10/2/2014

Shoreline Modified

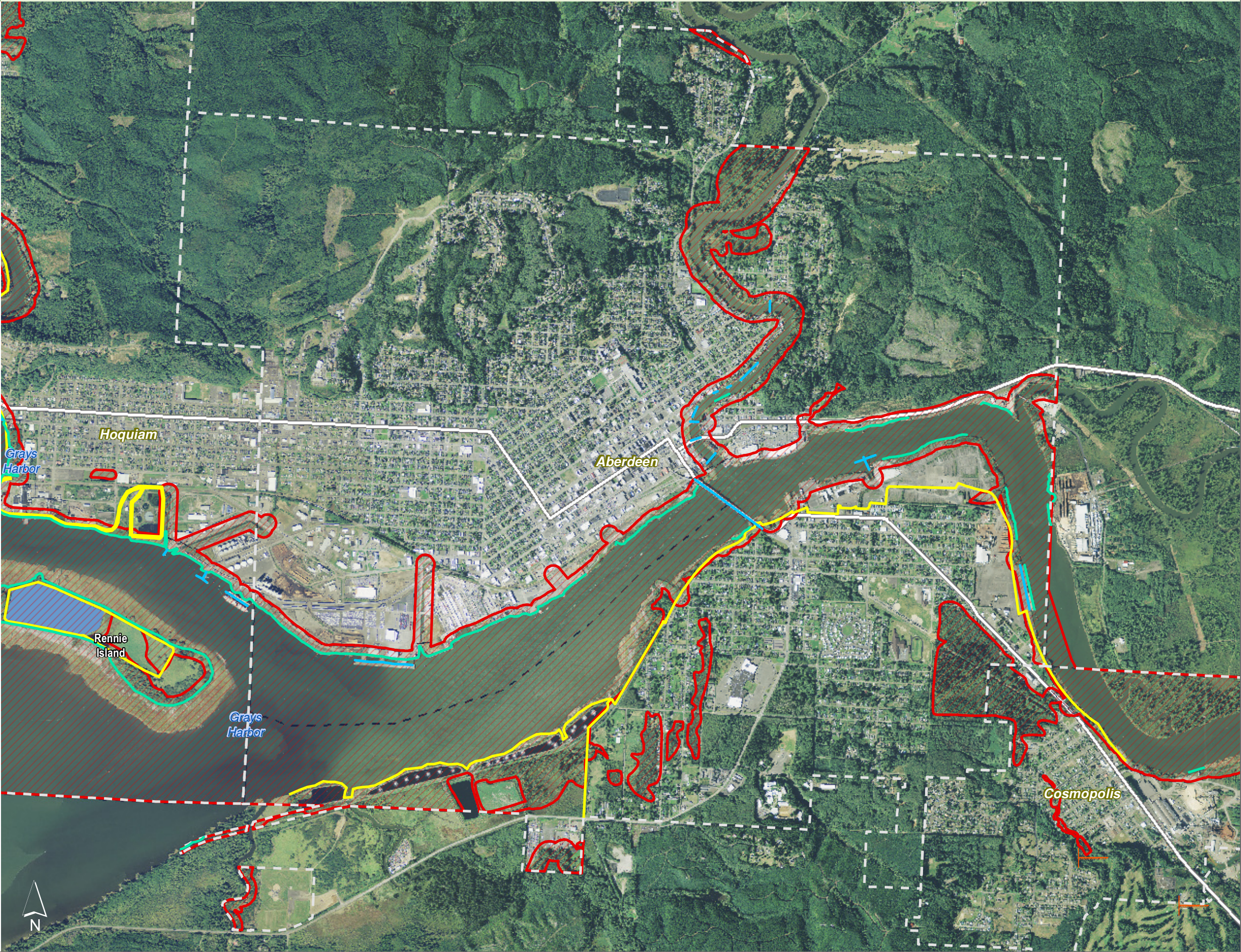
- Armored
- Over Water Structure
- Levees
- Dams
- Preliminary Shoreline Jurisdiction
- Reaches
- City Boundary
- SMA Rivers
- SMA Lakes
- Highways

0 0.25 0.5 Miles
1:27,000



Source: Grays Harbor County, USFWS NWI (2011), FEMA Preliminary DFIRM (2013), WA DNR, WSDOT, DOE, NRCS NAIP (2013)

Shoreline jurisdiction boundaries depicted on this map are approximate. They have not been formally delineated or surveyed and are intended for planning purposes only. Additional site-specific evaluation may be needed to confirm/verify information shown on this map.



Shoreline Modification

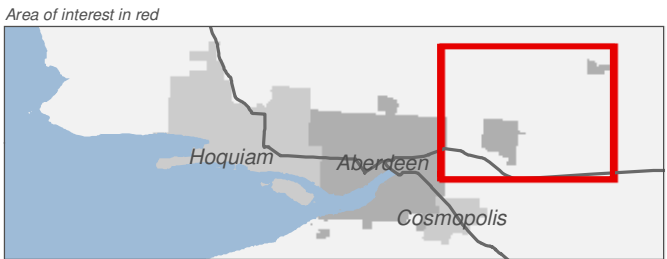
Figure 5.3: Aberdeen

Date: 10/2/2014

Shoreline Modified

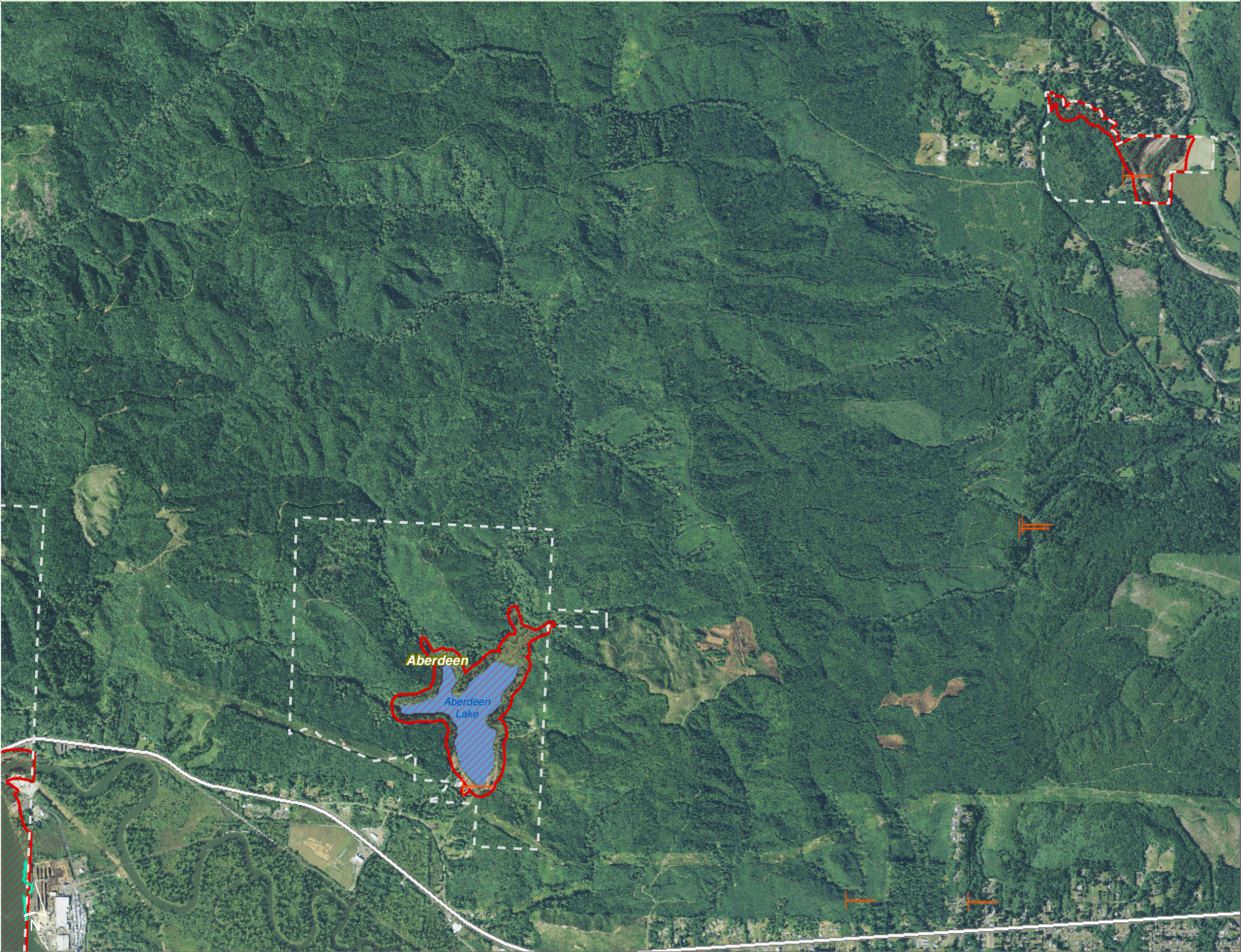
- Armored
- Over Water Structure
- Levees
- Dams
- Preliminary Shoreline Jurisdiction
- Reaches
- City Boundary
- SMA Rivers
- SMA Lakes
- Highways

0 0.25 0.5 Miles
1:24,000



Source: Grays Harbor County, USFWS NWI (2011), FEMA Preliminary DFIRM (2013), WA DNR, WSDOT, DOE, NRCS NAIP (2013)

Shoreline jurisdiction boundaries depicted on this map are approximate. They have not been formally delineated or surveyed and are intended for planning purposes only. Additional site-specific evaluation may be needed to confirm/verify information shown on this map.



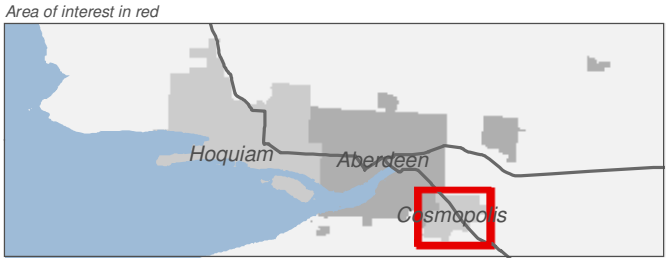
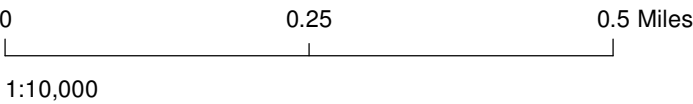
Shoreline Modification

Figure 5.4: Cosmopolis

Date: 10/2/2014

Shoreline Modified

- Armored
- Over Water Structure
- Levees
- Dams
- Preliminary Shoreline Jurisdiction
- Reaches
- City Boundary
- SMA Rivers
- SMA Lakes
- Highways



Source: Grays Harbor County, USFWS NWI (2011), FEMA Preliminary DFIRM (2013), WA DNR, WSDOT, DOE, NRCS NAIP (2013)

Shoreline jurisdiction boundaries depicted on this map are approximate. They have not been formally delineated or surveyed and are intended for planning purposes only. Additional site-specific evaluation may be needed to confirm/verify information shown on this map.



