

CITIES OF ABERDEEN, COSMOPOLIS, AND HOQUIAM SHORELINE MASTER PROGRAM UPDATE

Citizen Advisory Committee

Meeting 1 – Shoreline Environment Designations

March 25, 2015
Hoquiam City Hall

Brad Medrud, AHBL

Meeting Agenda

1. Welcome and introductions
2. Discuss format for CAC meetings
3. Overview of the SMP update
4. Introduce Environment Designations
5. Background for the next CAC meeting
6. Questions and further discussion

SHORELINE MANAGEMENT ACT

*Revised Code of Washington (RCW)
90-58*



SHORELINE MASTER PROGRAM GUIDELINES

*Washington Administrative Code
(WAC) 173-26*



SHORELINE MASTER PROGRAM

*Each City's Shoreline Master Program
(SMP)*

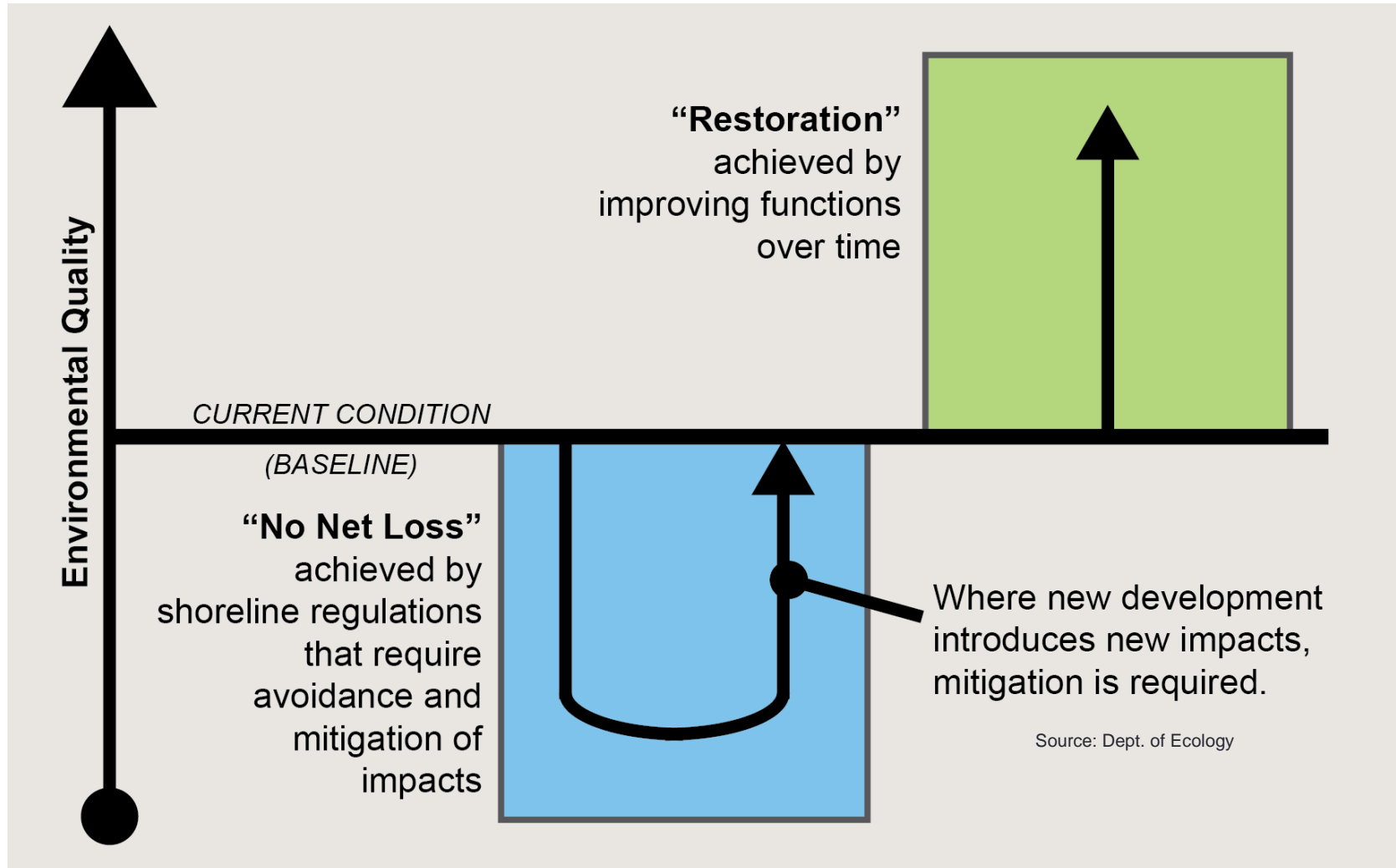
Shoreline Master Program (SMP) Update

- 2003 State rules require update
- Roles of the Cities and Ecology
- Updated SMP will:
 - Apply to future development
 - Not apply retroactively
 - Not require changing existing land uses or development

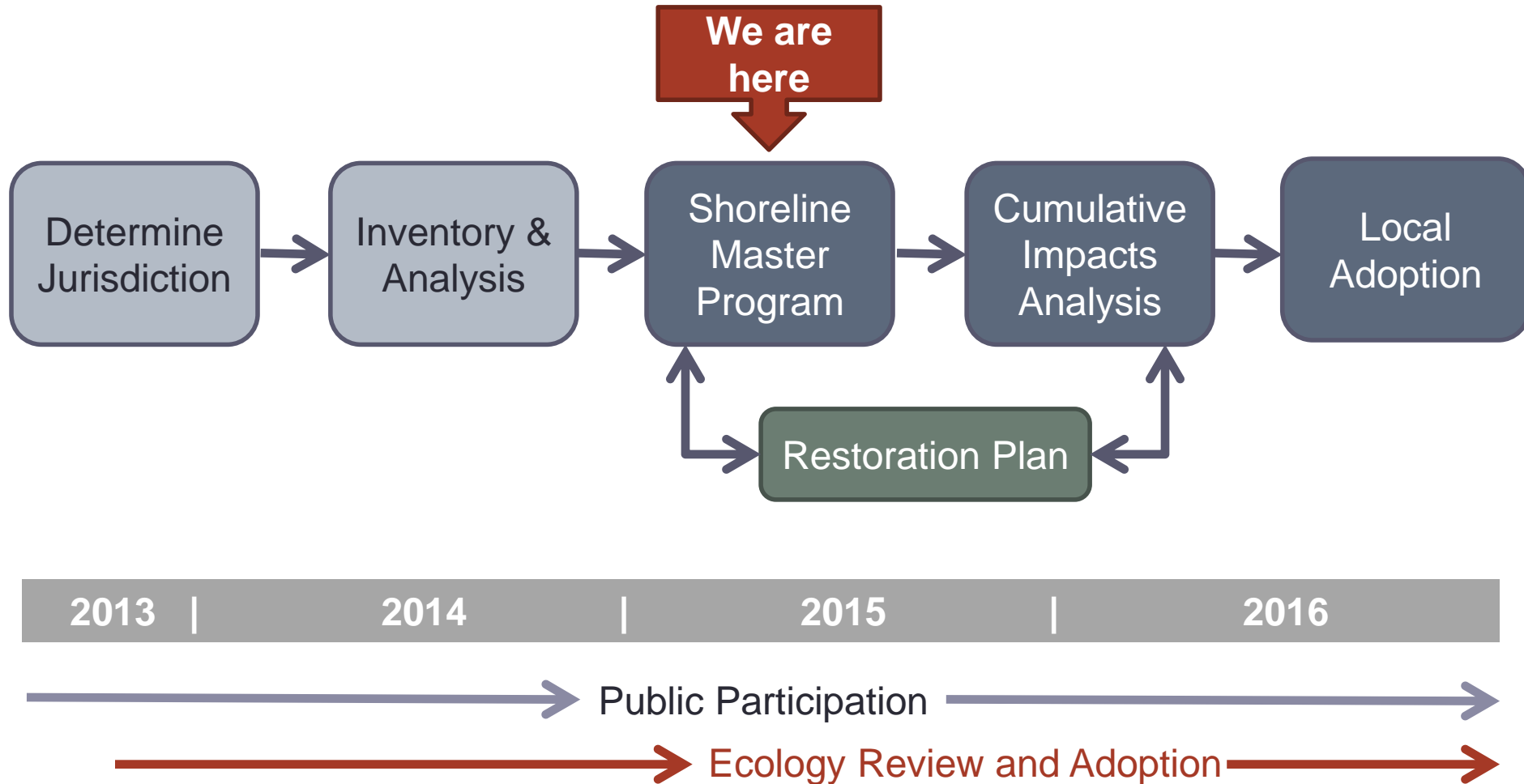
Major Update Requirements

- New requirements for “**no net loss**” and **restoration planning**
- Preserve and enhance **public access**
- Give preference to “**water-dependent uses**”
- **Public input** throughout update process

No Net Loss & Restoration



Timeline



Public Participation

- Guided by the Public Participation Plan
- Input welcomed through:
 - SMP Update website
 - Citizen Advisory Committee (CAC) and the Technical Advisory Committee (TAC)
 - City staffs and consultants
 - Planning Commissions and City Councils

Citizen Advisory Committee

Who are you?

- Representatives of a cross section of geography, interests, and values

What is your role?

- Ensure update balances local vision and state law
- Review work products
- Guide policies and regulations

What is the Shoreline Jurisdiction?

- **Marine waters** (Grays Harbor)
- **Lakes and reservoirs** greater than 20 acres (Lake Aberdeen)
- **Rivers and creeks** - mean annual flow > 20 cubic feet per second

Chehalis River, East Fork Hoquiam River, Hoquiam River, Little Hoquiam River, Wishkah River, Wedekind Confluence, Charley Creek, Fry Creek, Mill Creek, and Newskah Creek

What is the Shoreline Jurisdiction?

- Lands extending **200-feet landward** from the ordinary high water mark
- **Floodways and contiguous floodplains** extending 200-feet landward from the ordinary high water mark
- **Associated wetlands**

What is the Shoreline Jurisdiction?

Shoreline Jurisdiction components

The following areas are subject to the SMA within Aberdeen, Cosmopolis, and Hoquiam

1 Pacific Coast from
Cape Disappointment to
Cape Flattery, including harbors,
bays, estuaries, and inlets

+

2 Streams/rivers with mean
annual flow ≥ 20 cubic feet
per second

+

3 Lakes and reservoirs \geq
20 acres

+

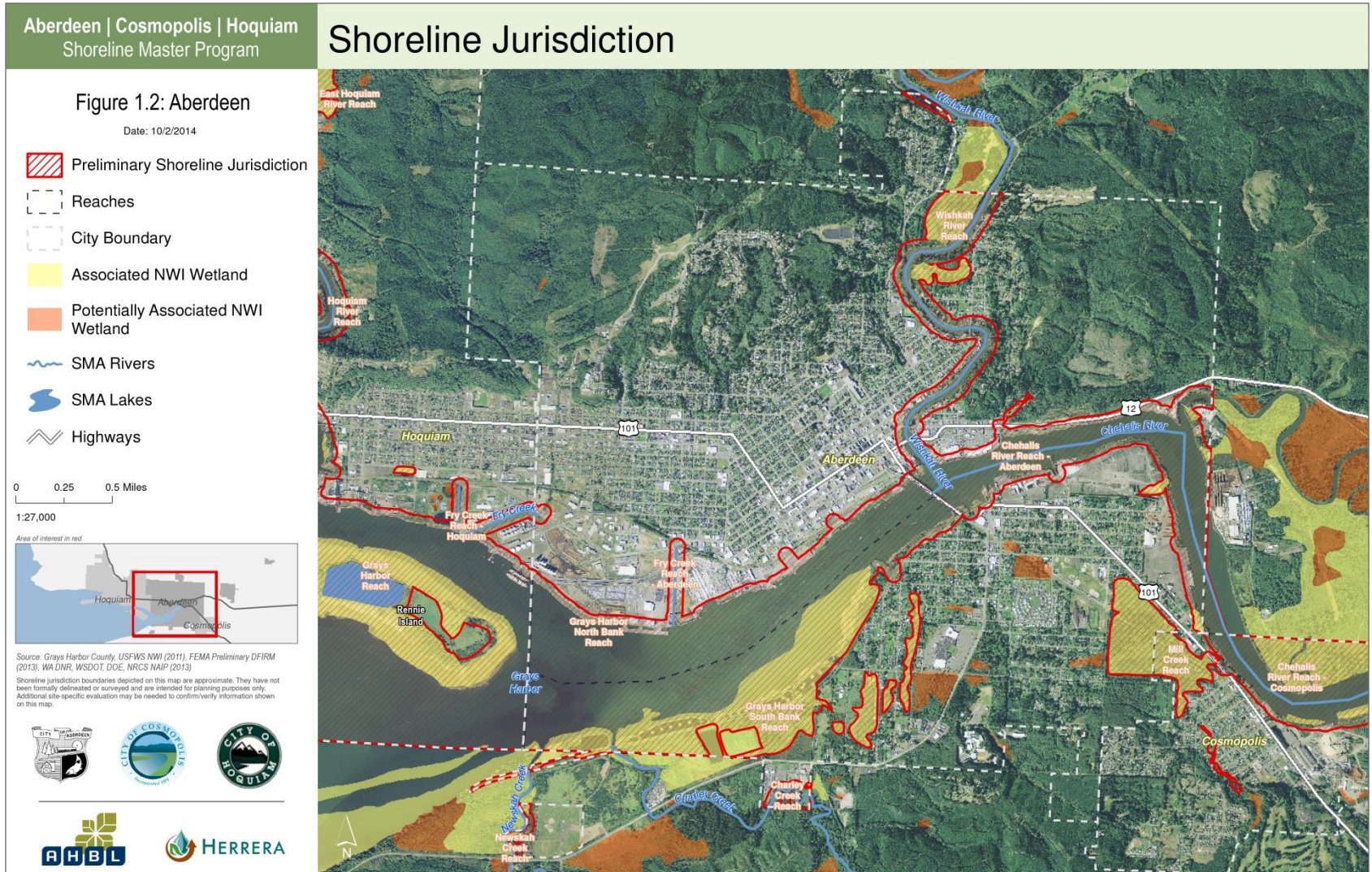
4 Adjacent shorelands→

A wetland is
associated if it
intersects coastline,
streams, lakes, or
adjacent shorelands
[1, 2, 3 & 4]

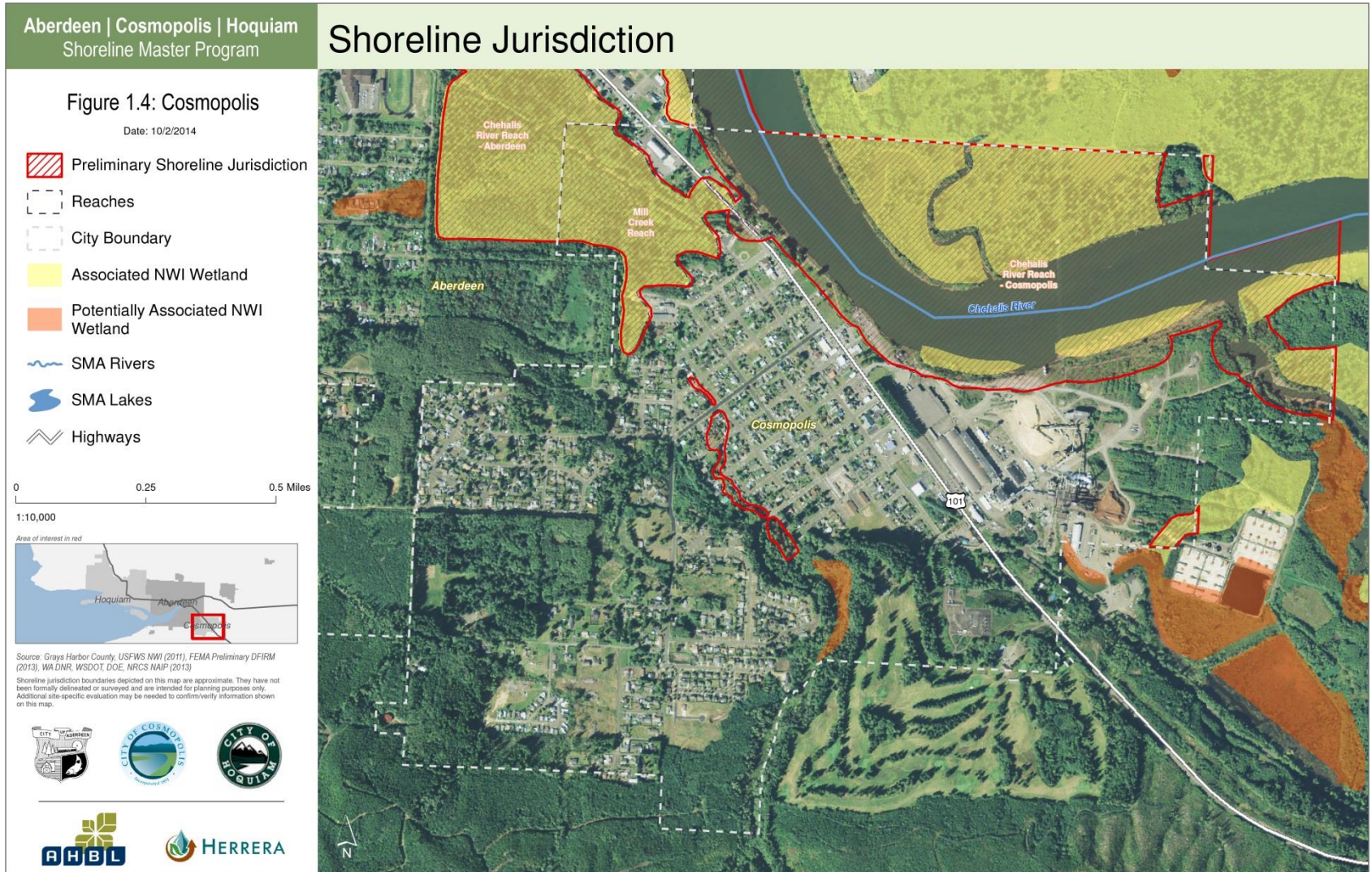
Adjacent shorelands include:

- 1] All land 200 feet from the OHWM
- 2] FEMA floodways
- 3] FEMA floodplain 200 feet landward from
the FEMA floodway
- 4] Associated wetlands

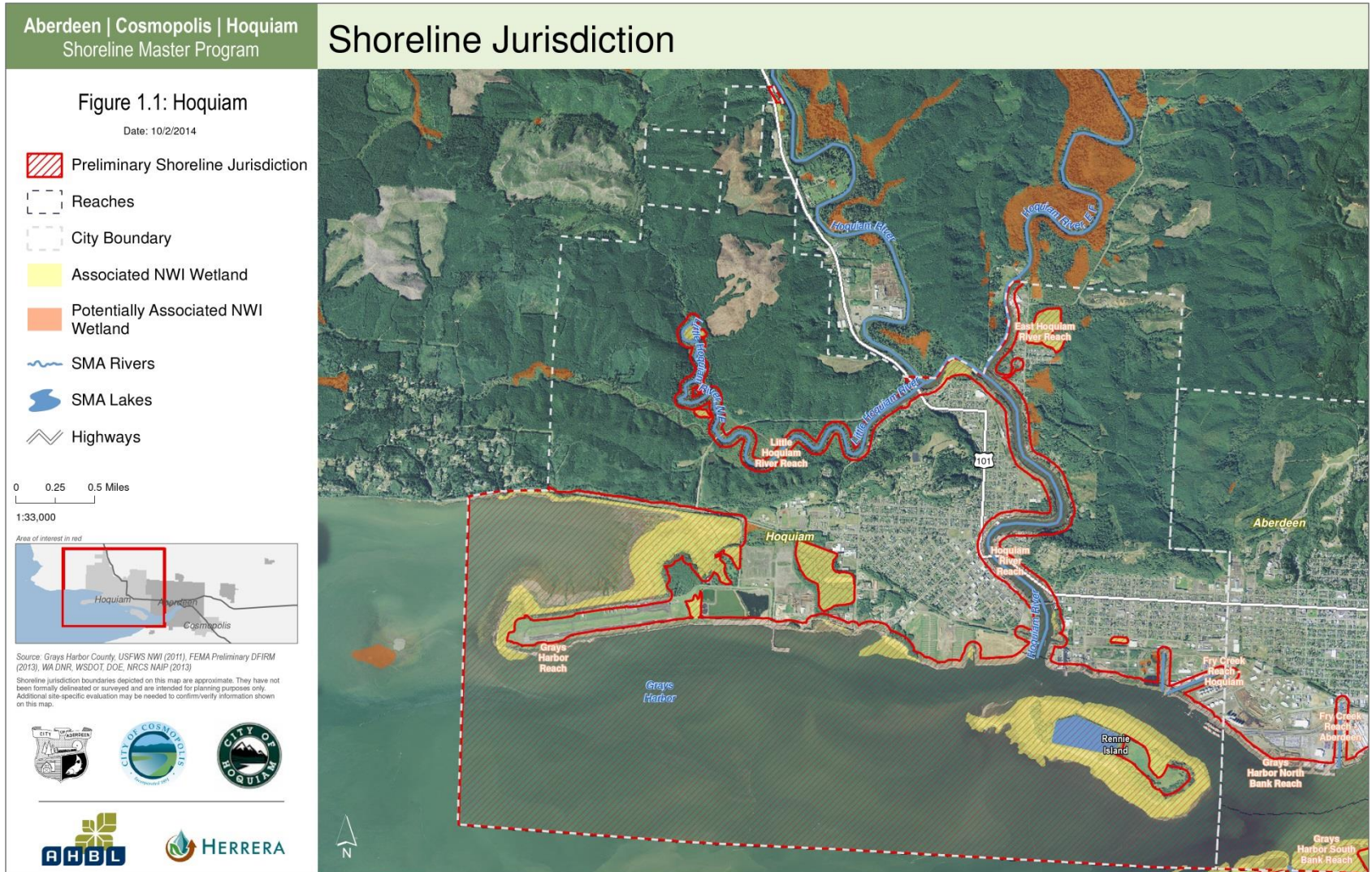
Shoreline Jurisdiction



Shoreline Jurisdiction



Shoreline Jurisdiction



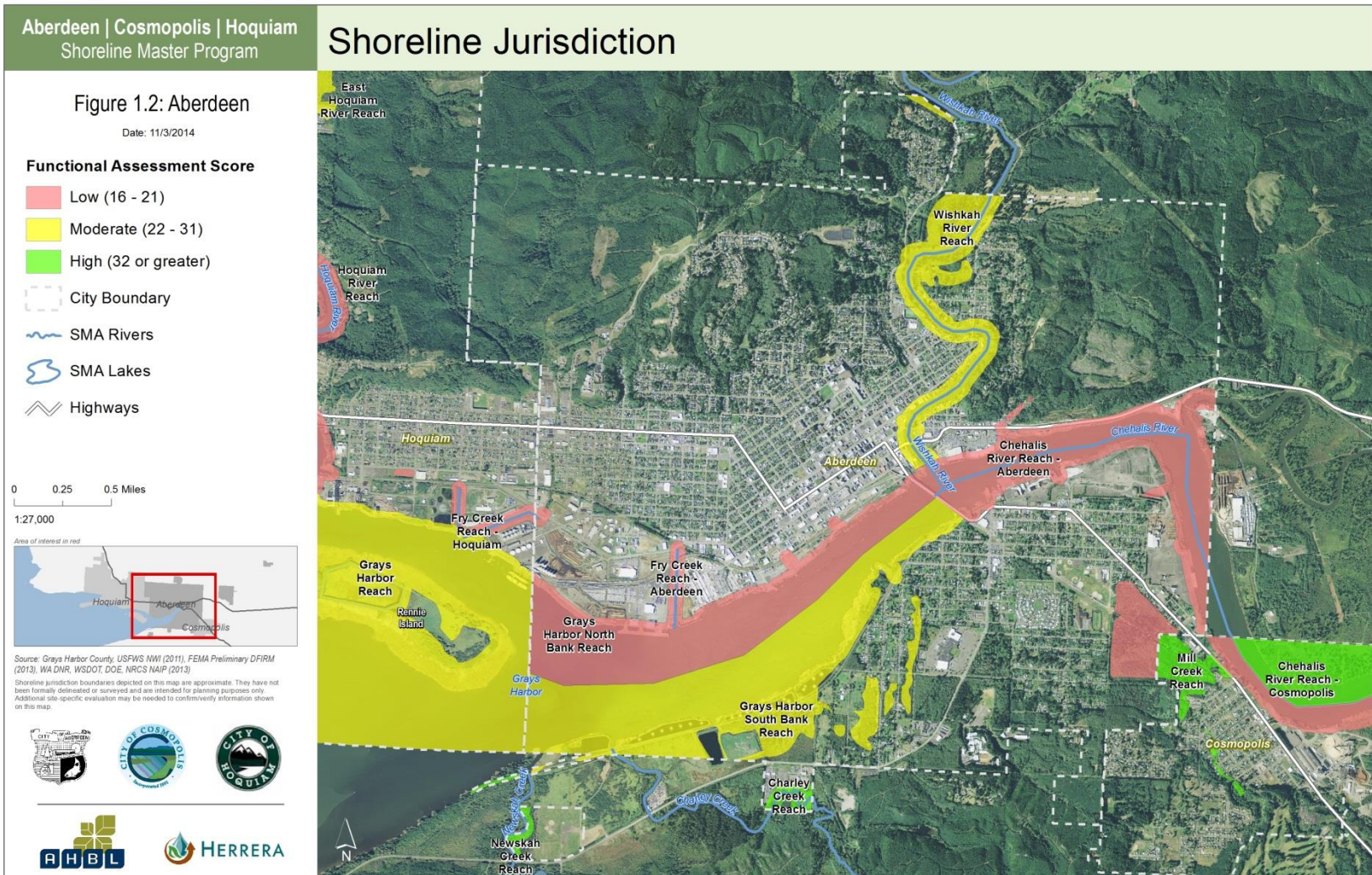
Shoreline Inventory & Characterization

- Scientific basis of the SMP, analyzes:
 - Ecosystems and shoreline functions
 - Shoreline uses
 - Public access
- Describes existing conditions and development patterns
- Establishes the baseline for “No Net Loss”

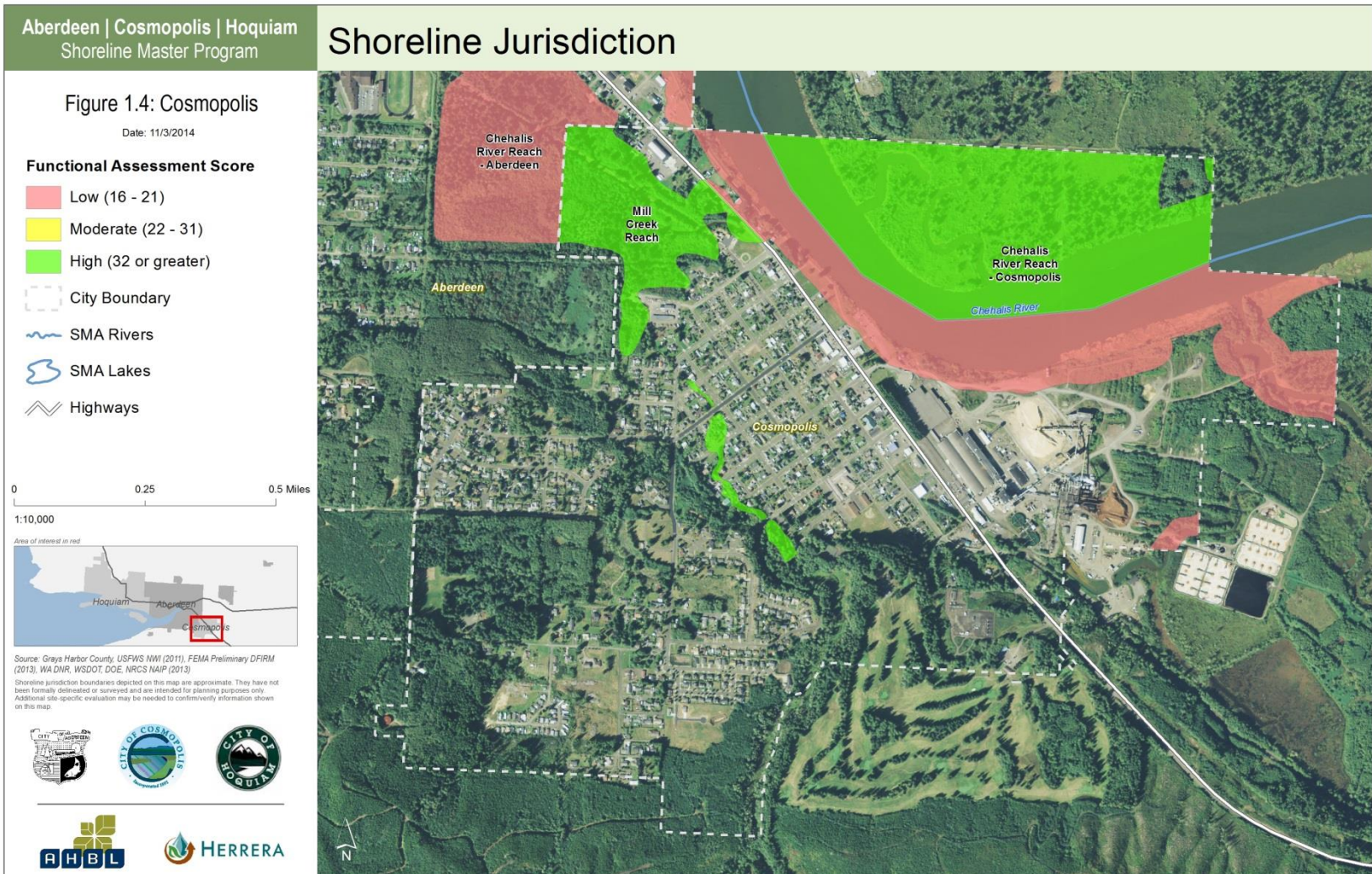
Uses for the Shoreline Inventory

- Basis for environment designations
- Informs development of policies, regulations, and mitigation standards
- Identifies opportunities for restoration

Functional Assessment Score



Functional Assessment Score



Functional Assessment Score

Aberdeen | Cosmopolis | Hoquiam
Shoreline Master Program

Shoreline Jurisdiction

Figure 1.1: Hoquiam

Date: 11/3/2014

Functional Assessment Score

- Low (16 - 21)
- Moderate (22 - 31)
- High (32 or greater)

City Boundary

SMA Rivers

SMA Lakes

Highways

0 0.25 0.5 Miles
1:33,000

Area of interest in red



Source: Grays Harbor County USFWS NWI (2011), FEMA Preliminary DFIRM (2013), WA DNR, WSDOT, DOE, NRCS NAIP (2013)

Shoreline jurisdiction boundaries depicted on this map are approximate. They have not been formally delineated or surveyed and are intended for planning purposes only. Additional site specific evaluation may be needed to confirm/verify information shown on this map.



Shoreline Environment Designations

- Means to regulate development and protect or enhance the character of a shoreline
- Function similar to a land use designation or a zoning district
- All shoreline areas must be assigned specific environment designations

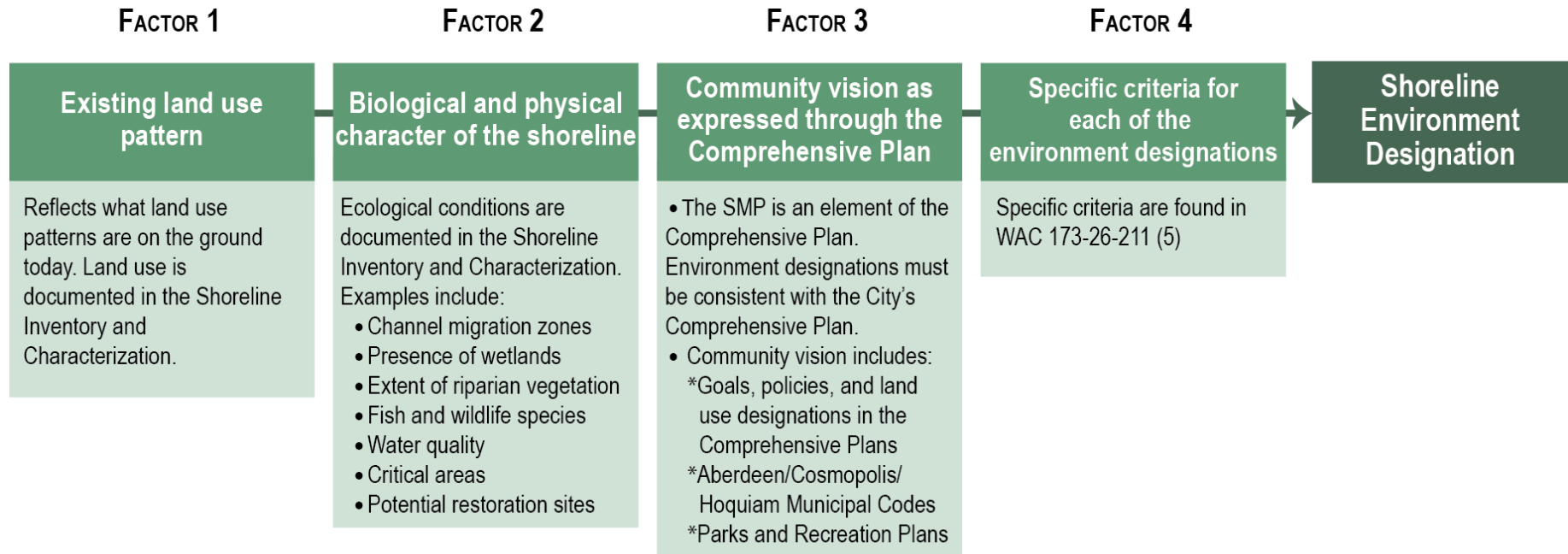
How are they determined?

1. **Existing land use patterns** – Current land uses documented in the Shoreline Inventory and Characterization and map folio
2. **Shoreline biological and physical character** – Ecological characteristics and functions identified in the Shoreline Inventory and Characterization

How are they determined?

3. **Goals and aspirations of the community as found in the Comprehensive Plan** – Includes goals, policies, and land use designations, and codes that implement a City's Comprehensive Plan.
4. **Specific criteria for each environment designations** – Found in WAC 173-26-211(5)

Factors in the process



What do they do?

- Each environment designation has **specific management policies and regulations** reflecting their purpose and intent
- These policies and regulations **apply to all uses** allowed within each shoreline environment designation

What do they do: Uses

The shoreline environment designations establish what kind of uses will be:

- Permitted outright
- Need a shoreline conditional use permit
- Prohibited

What they do: Regulation

Basis for bulk and dimensional regulations:

- Buffers/Setbacks
- Maximum heights
- Maximum impervious surface coverage

As well as specific regulations for:

- Site development
- Vegetation
- Public access

What can they be?

Five basic environment designations:

- High-intensity
- Shoreline residential
- Urban conservancy
- Natural
- Aquatic

Proposed Environment Designations

Aberdeen | Cosmopolis | Hoquiam
Shoreline Master Program

Shoreline Environment Designations

Figure 17.2: Aberdeen

Date: 3/9/2015

Shoreline Environment Designation

-  High Intensity
-  Shoreline Residential
-  Urban Conservancy
-  Reaches
-  City Boundary
-  SMA Rivers
-  SMA Lakes
-  Highways

0	0.25	0.5 Miles
---	------	-----------

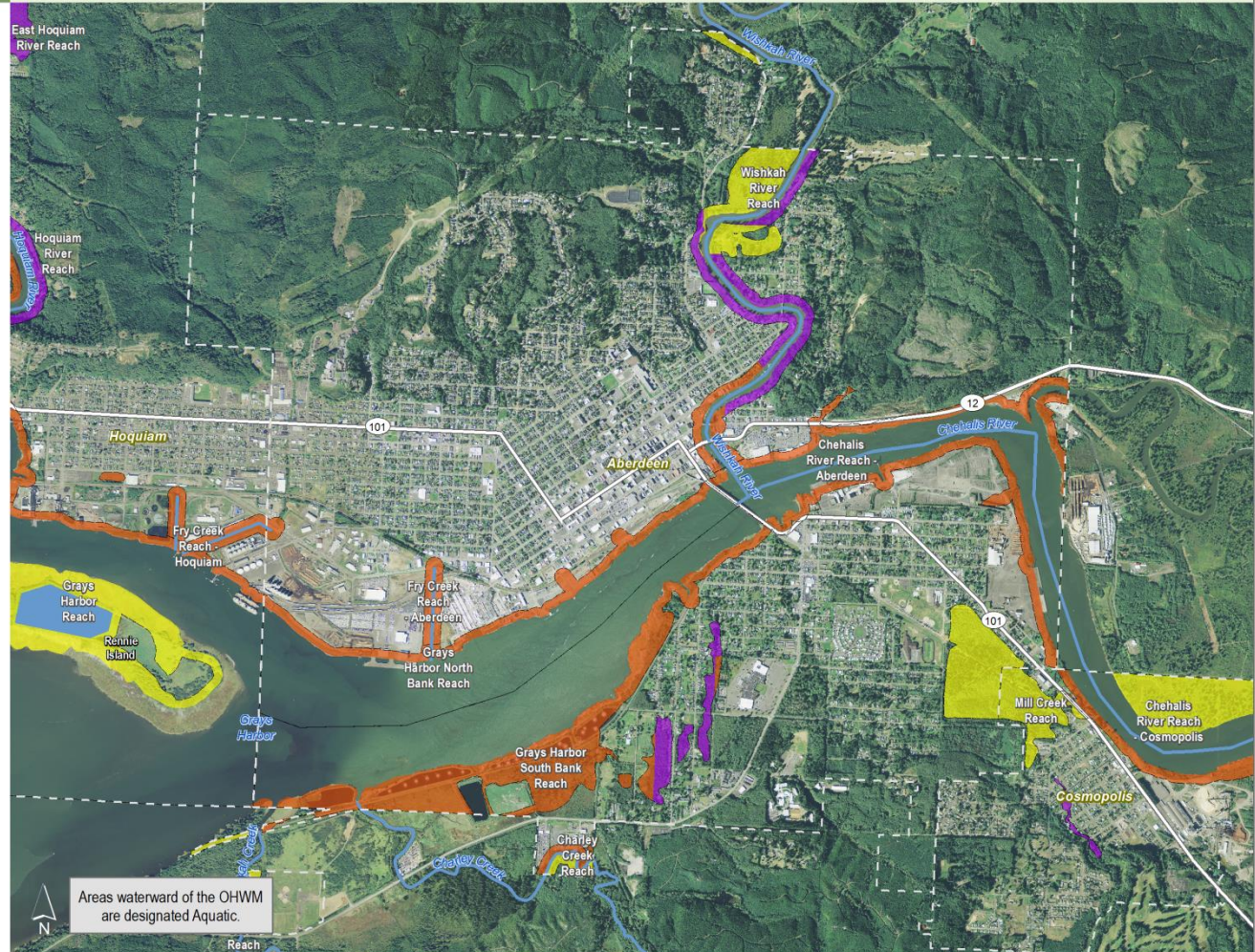
1:27,000

Area of interest in red



Source: Grays Harbor County, USFWS NWI (2011), FEMA Preliminary DFIRM (2013), WA DNR, WSDOT, DOE, NRCS NAIP (2013)

Shoreline jurisdiction boundaries depicted on this map are approximate. They have not been formally delineated or surveyed and are intended for planning purposes only. Additional site-specific evaluation may be needed to confirm/verify information shown on this map.



Proposed Environment Designations

Aberdeen | Cosmopolis | Hoquiam
Shoreline Master Program

Shoreline Environment Designations

Figure 17.4: Cosmopolis

Date: 3/9/2015

Shoreline Environment Designation

-  High Intensity
-  Shoreline Residential
-  Urban Conservancy
-  Reaches
-  City Boundary
-  SMA Rivers
-  SMA Lakes
-  Highways

0 0.25 0.5 Miles

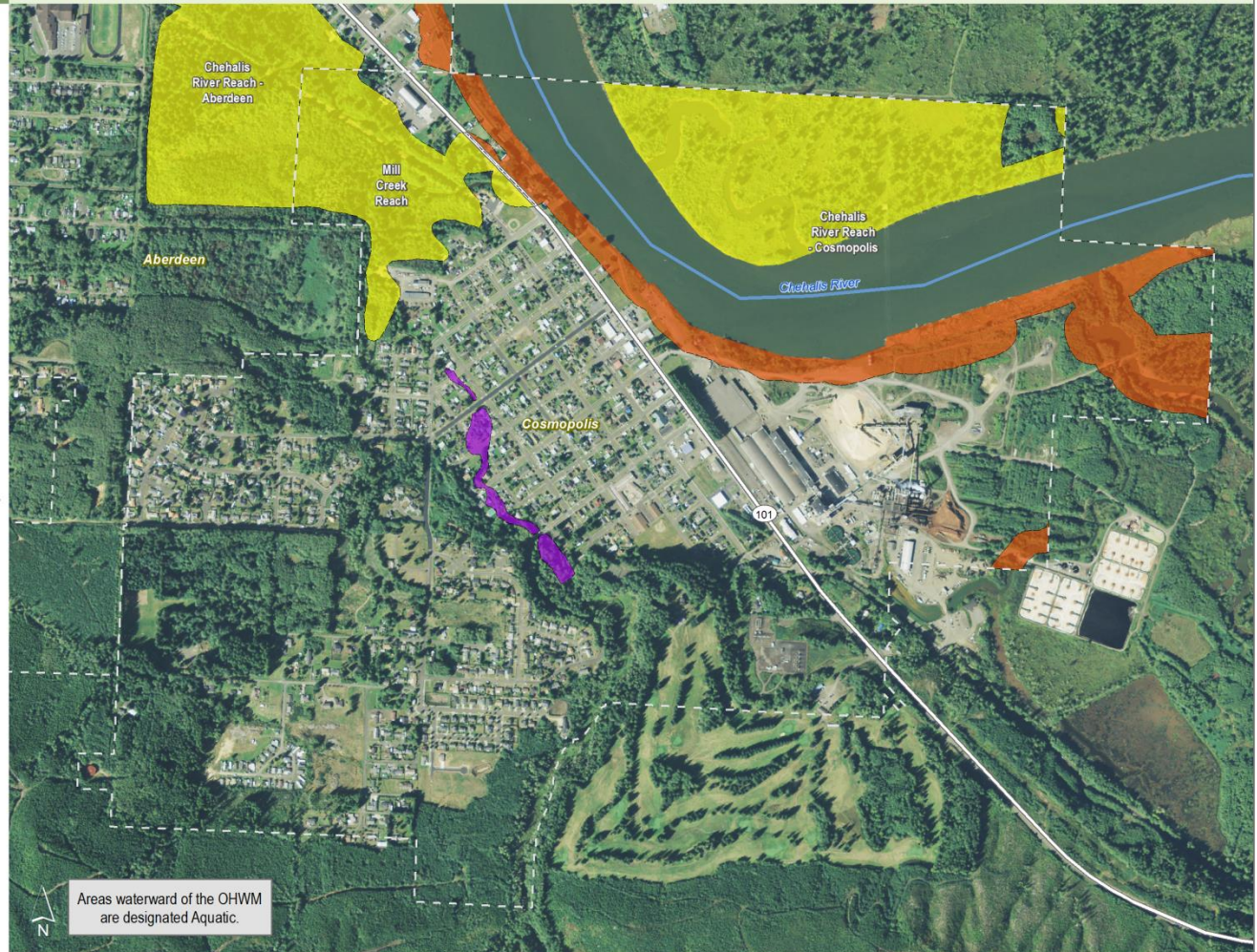
1:10,000

Area of interest in red



Source: Grays Harbor County, USFWS NWI (2011), FEMA Preliminary DFIRM (2013), WADNR, WSDOT, DOE, NRCS NAIP (2013)

Shoreline jurisdiction boundaries depicted on this map are approximate. They have not been formally delineated or surveyed and are intended for planning purposes only. Additional site-specific evaluation may be needed to confirm information shown on this map.



Proposed Environment Designations

Aberdeen | Cosmopolis | Hoquiam
Shoreline Master Program

Shoreline Environment Designations

Figure 17.1: Hoquiam

Date: 3/9/2015

Shoreline Environment Designation

- High Intensity
- Shoreline Residential
- Urban Conservancy
- Reaches
- City Boundary
- SMA Rivers
- SMA Lakes
- Highways

0 0.25 0.5 Miles

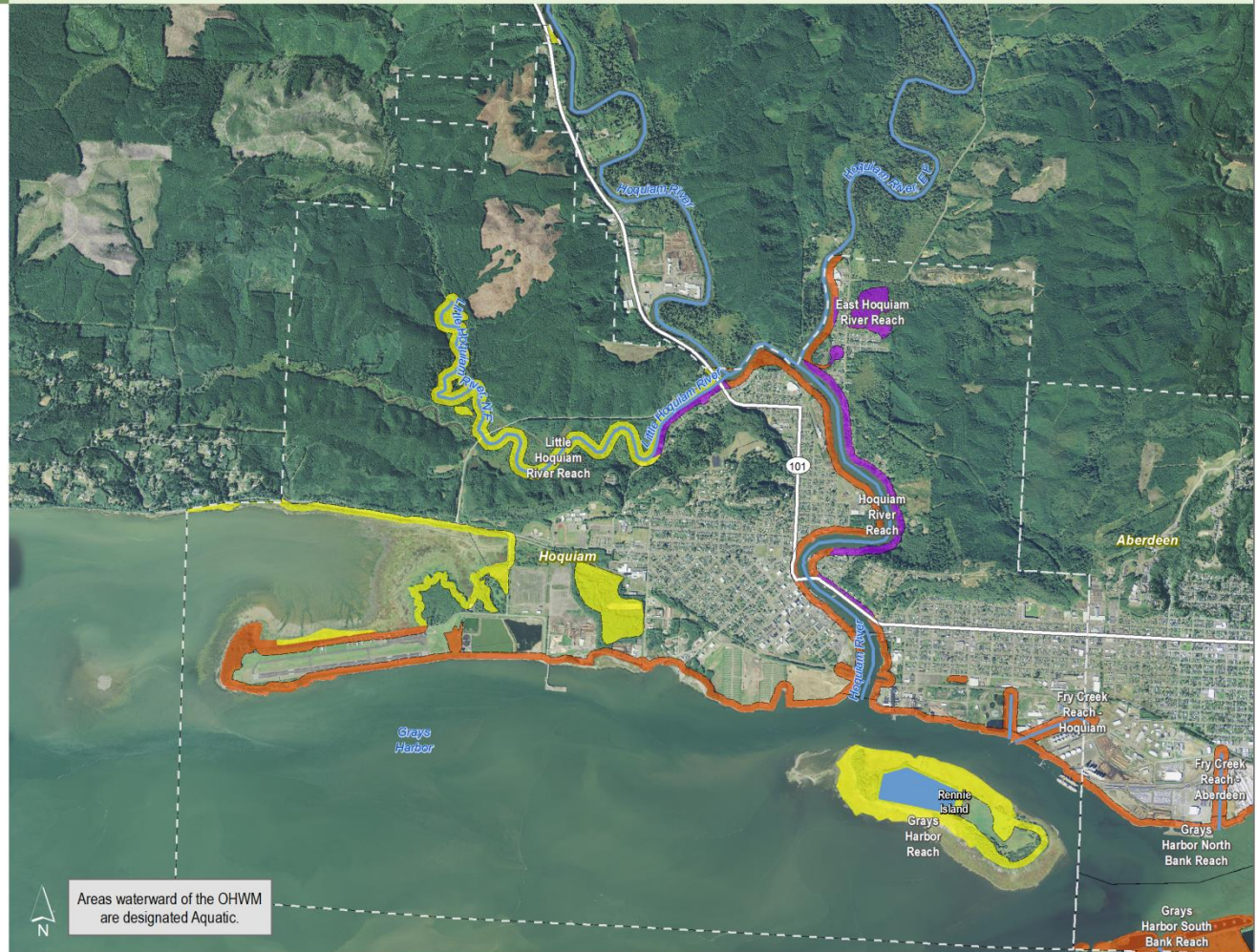
1:33,000

Area of interest in red



Source: Grays Harbor County, USFWS NWI (2011), FEMA Preliminary DFIRM (2013), WA DNR, WSDOT, DOE, NRCS NAIP (2013)

Shoreline jurisdiction boundaries depicted on this map are approximate. They have not been formally delineated or surveyed and are intended for planning purposes only. Additional site-specific evaluation may be needed to confirm survey information shown on this map.



Next Steps

Task 6: Review draft SMP:

- Meeting 2 – April 28: Finish Environment Designations; start General Goals and Policies
- Meeting 3 – May 26: Finish General Goals, Policies, and Regulations; start Shoreline Use Policies and Regulations
- Meeting 4 – June 23: Finish Shoreline Use Policies and Regulations; start Shoreline Modification Policies and Regulations and Administration
- Meeting 5 – July 28: Finish Shoreline Modification Policies and Regulations and Administration; Discuss critical areas regulations and Restoration Plan

Questions?

Project Contacts:

- Josh Beach, City Planner, JBeach@cityofhoquiam.com
- Lisa Scott, City of Aberdeen, lscott@aberdeenwa.gov
- Darrin Raines, City of Cosmopolis, draines@cosmopolis.us.com
- Brian Shay, City of Hoquiam, bshay@cityofhoquiam.com
- Brad Medrud, AHBL, Inc., bmedrud@ahbl.com
- Kim Van Zwahlenburg, Dept. of Ecology,
kim.vanzwahlenburg@ecy.wa.gov

Websites:

https://www.ezview.wa.gov/site/alias_1789/35000/default.aspx

<http://www.ecy.wa.gov/programs/sea/shorelines/index.html>