

CITIES OF ABERDEEN, COSMOPOLIS, AND HOQUIAM SHORELINE MASTER PROGRAM UPDATE

Citizen Advisory Committee

Meeting 2: Shoreline Environment Designations/SMP
Chapter 1 – 4, General Goals, Policies, and Regulations

April 28, 2015
Hoquiam City Hall

Brad Medrud and Annalisa McDaniel, AHBL, Inc.

Meeting Agenda

Discuss Shoreline Environment Designations

1. Obtain feedback from CAC
2. Answer Questions

Introduce SMP General Goals, Policies, and Regulations (SMP Chapters 1 – 4)

1. Discuss Ecology's requirements
2. Present background
3. Get initial feedback from CAC

Proposed Environment Designations

Aberdeen | Cosmopolis | Hoquiam
Shoreline Master Program

Shoreline Environment Designations

Figure 17.2: Aberdeen

Date: 4/27/2015

Shoreline Environment Designation

- High Intensity
- Shoreline Residential
- Urban Conservancy
- Reaches
- City Boundary
- SMA Rivers
- SMA Lakes
- Highways

0 0.25 0.5 Miles

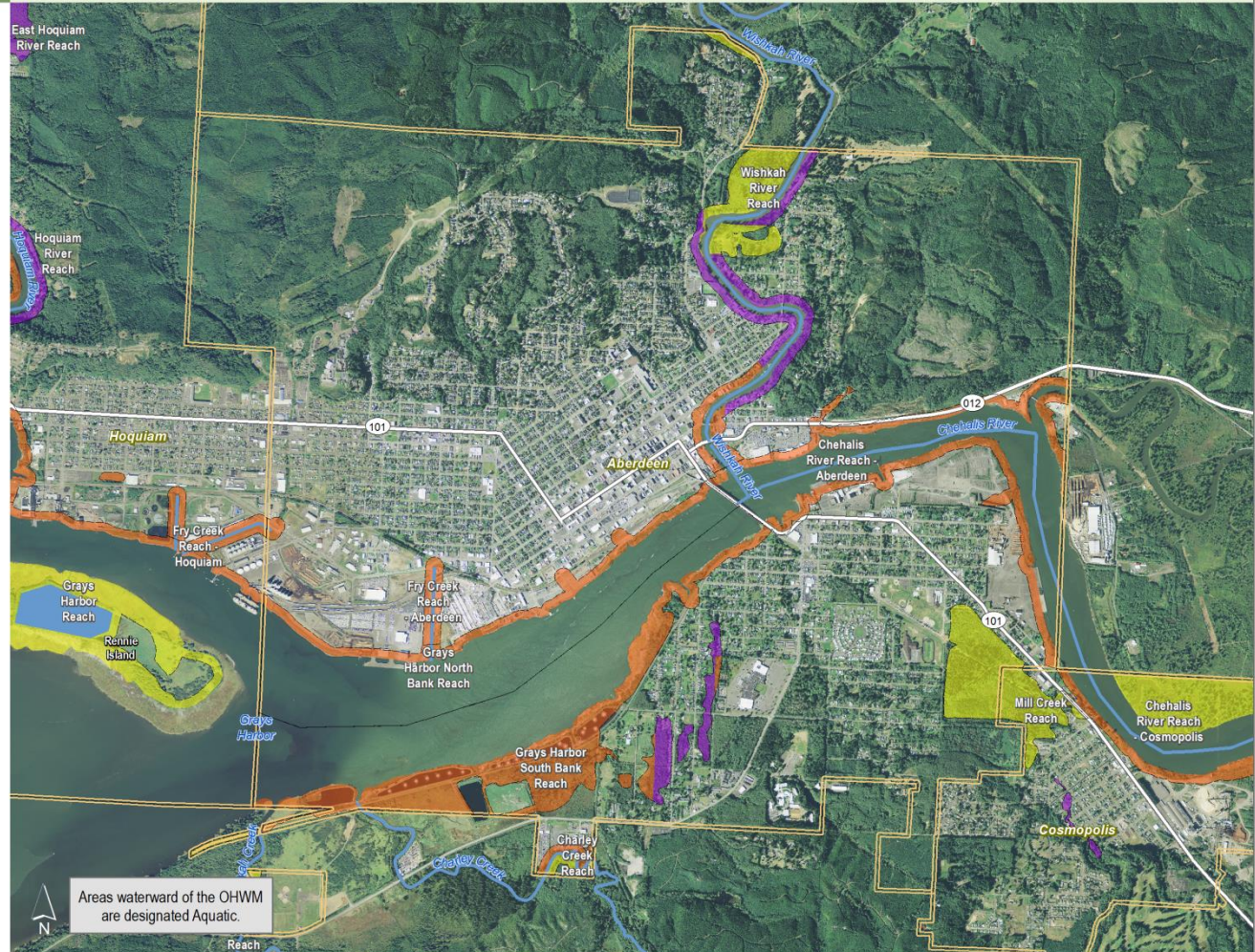
1:27,000

Area of interest in red



Source: Grays Harbor County, USFWS NWI (2011), FEMA Preliminary DFIRM (2013), WA DNR, WSDOT, DOE, NRCS NAIP (2013)

Shoreline jurisdiction boundaries depicted on this map are approximate. They have not been formally delineated or surveyed and are intended for planning purposes only. Additional site-specific evaluation may be needed to confirm/verify information shown on this map.



Proposed Environment Designations

Aberdeen | Cosmopolis | Hoquiam
Shoreline Master Program

Shoreline Environment Designations

Figure 17.4: Cosmopolis

Date: 4/27/2015

Shoreline Environment Designation

- High Intensity
- Shoreline Residential
- Urban Conservancy
- Reaches
- City Boundary
- SMA Rivers
- SMA Lakes
- Highways

0 0.25 0.5 Miles

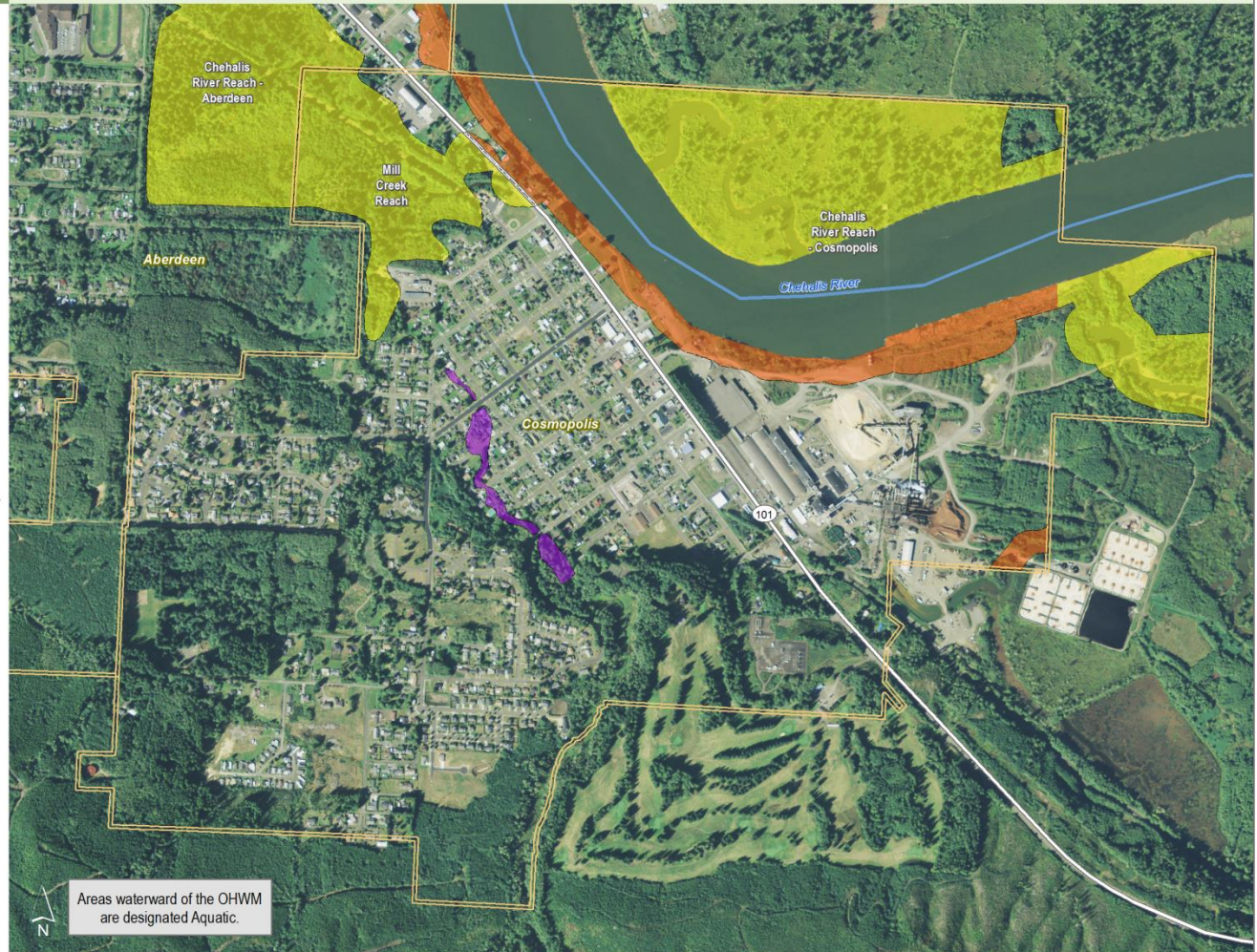
1:10,000

Area of interest in red



Source: Grays Harbor County, USFWS NWI (2011), FEMA Preliminary DFIRM (2013), WA DNR, WSDOT, DOE, NRCS NAIP (2013)

Shoreline jurisdiction boundaries depicted on this map are approximate. They have not been formally delineated or surveyed and are intended for planning purposes only. Additional site-specific evaluation may be needed to confirm information shown on this map.



Proposed Environment Designations

Aberdeen | Cosmopolis | Hoquiam
Shoreline Master Program

Shoreline Environment Designations

Figure 17.1: Hoquiam

Date: 4/27/2015

Shoreline Environment Designation

- High Intensity
- Shoreline Residential
- Urban Conservancy
- Reaches
- City Boundary
- SMA Rivers
- SMA Lakes
- Highways

0 0.25 0.5 Miles

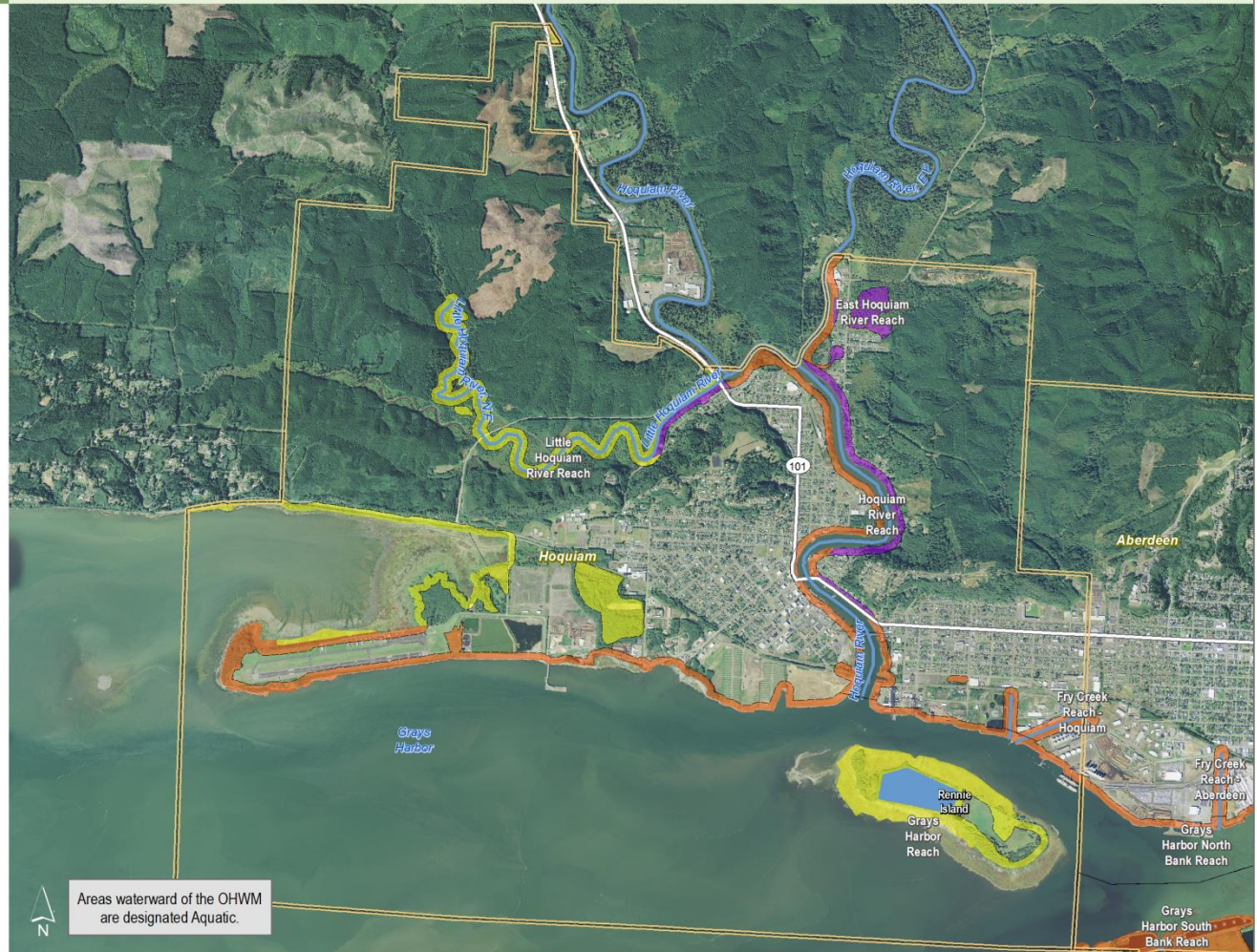
1:33,000

Area of interest in red



Source: Grays Harbor County, USFWS NWI (2011), FEMA Preliminary DFIRM (2013), WADNR, WSDOT, DOE, NRCS NAIP (2013)

Shoreline jurisdiction boundaries depicted on this map are approximate. They have not been formally delineated or surveyed and are intended for planning purposes only. Additional site-specific evaluation may be needed to confirm information shown on this map.



SMP Submittal Checklist

- Demonstrates how the SMP update satisfies WAC 173-26-201(3)(a) requirements
- Connects requirements in state law to the local SMP
- Used by Ecology to review submittals

SHORELINE MASTER PROGRAM SUBMITTAL CHECKLIST

Draft Covering SIC and SMP Prepared for the Cities of Aberdeen, Cosmopolis, and Hoquiam

Name of Amendment: Draft Aberdeen, Cosmopolis, and Hoquiam Reporting

Prepared by: Brad Medrud, AHBL, Inc., Consultant for the Cities of Aberdeen, Cosmopolis, and Hoquiam

Date: February 6, 2015

STATE RULE (WAC) REQUIREMENTS	LOCATION	COMMENTS
DOCUMENTATION OF SMP DEVELOPMENT PROCESS		
PUBLIC INVOLVEMENT, COMMUNICATION, AND COORDINATION		
Documentation of public involvement throughout SMP development process. WAC 173-26-201(3)(b)(i) and WAC 173-26-090 and 100. For SSWs, see WAC 173-26-251(3)(a).	(1) Refer to the Public Participation Program prepared as part of SMA Grant Task 3.A and Shoreline Master Program (SMP) Appendix 1 - Communication	
Documentation of communication with state agencies and affected Indian tribes throughout SMP development. WAC 173-26-201(3)(b)(ii) and (iii). WAC 173-26-100(5). For saltwater shorelines, see WAC 173-26-221(2)(c)(iii)(B). For SSWs, see WAC 173-26-251(3)(a).	(2) <i>Cumulative Impacts Analysis and SMP Appendix 2 - Communication</i> Not applicable (2a) <i>Cumulative Impacts Analysis and SMP Appendix 2 - Communication</i>	
Demonstration that critical areas regulations for shorelines are based on the SMA and the guidelines, and assures no net loss of shoreline ecological functions necessary to sustain shoreline natural resources. WAC 173-26-221(2)(b)(ii), (iii) and (c). EHB 1653.	(3) SMP Chapter 4.04 – Ecological Protection and Critical Areas; SMP Chapter 4.05 – Flood Hazard Management; and SMP Chapter 4.06 – Vegetation	
Documentation of process to assure that proposed		

Washington Department of Ecology SMP Submittal Checklist

Comment (A1): AHBL Note: Highlighted items in italic are to be completed.

Submittal Checklist

General Format of the SMP

- User Guide
- Chapter 1: Introduction
- Chapter 2: Shoreline Management Goals
- Chapter 3: Shoreline Environment Designations
- Chapter 4: General Policies & Regulations
- Chapter 5: Specific Shoreline Use Policies & Regulations
- Chapter 6: Shoreline Modification Policies & Regulations
- Chapter 7: Shoreline Administration
- Chapter 8: Definitions

General Format of the SMP

- Appendix 1: Shoreline Environment Designation Maps
- Appendix 2: Critical Areas Regulations
- Appendix 3: Shoreline Substantial Development Permit Exemptions

General Format of the SMP

- User Guide
- Chapter 1: Introduction
- Chapter 2: Shoreline Management Goals
- Chapter 3: Shoreline Environment Designations
- Chapter 4: General Policies & Regulations
- Chapter 5: Specific Shoreline Use Policies & Regulations
- Chapter 6: Shoreline Modification Policies & Regulations
- Chapter 7: Shoreline Administration
- Chapter 8: Definitions

Next Steps

Task 6: Review draft SMP:

- Meeting 3 – May 26: Finish General Goals, Policies, and Regulations; start Specific Shoreline Use Policies and Regulations, Shoreline Modification Policies and Regulations, and Administration (SMP Chapters 5 – 7)
- Meeting 4 – June 23: Finish Shoreline Use Policies and Regulations, Specific Shoreline Use Policies and Regulations, and Administration
- Meeting 5 (suggested additional meeting) – July 28: This time is available for an additional meeting to discuss critical areas regulations and Restoration Plan as needed

Questions?

Project Contacts:

- Josh Beach, City Planner, JBeach@cityofhoquiam.com
- Lisa Scott, City of Aberdeen, lscott@aberdeenwa.gov
- Darrin Raines, City of Cosmopolis, draines@cosmopolis.us.com
- Brian Shay, City of Hoquiam, bshay@cityofhoquiam.com
- Brad Medrud, AHBL, Inc., bmedrud@ahbl.com
- Kim Van Zwahlenburg, Dept. of Ecology,
kim.vanzwahlenburg@ecy.wa.gov

Websites:

https://www.ezview.wa.gov/site/alias_1789/35000/default.aspx

<http://www.ecy.wa.gov/programs/sea/shorelines/index.html>