

# Cities of Aberdeen, Cosmopolis, and Hoquiam Shoreline Master Program Update

## Joint City Council Meeting **SMPs Update Adoption Workshop**

Wednesday, March 2, 2016

6:00 to 8:00 pm

Rotary Log Pavilion

Morrison Riverfront Park

Aberdeen, WA

# Workshop Agenda

1. Welcome and introductions
2. Overview of the SMP update process
3. Discuss the elements of the SMP update
4. Talk about the next steps in the process
5. Answer your questions

# Introductions

## **City of Aberdeen**

- Lisa Scott, Director of Community Development

## **City of Cosmopolis**

- Darrin Raines, Public Works/Community Development Director

## **City of Hoquiam**

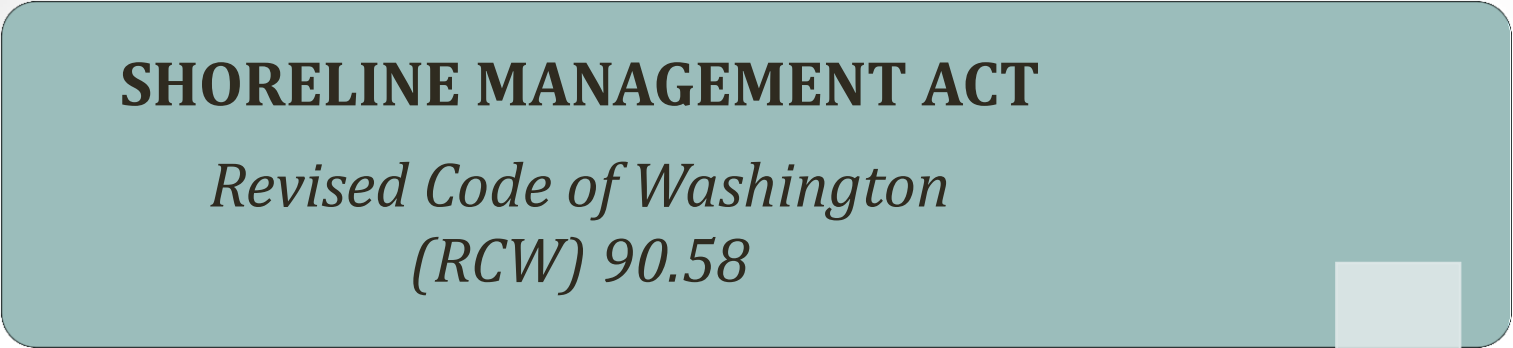
- Brian Shay, City Manager

## **AHBL, Inc.**

- Brad Medrud, Project Manager


# **SHORELINE MANAGEMENT ACT**

*Revised Code of Washington  
(RCW) 90.58*



## **SHORELINE MASTER PROGRAM GUIDELINES**

*Washington Administrative Code  
(WAC) 173-26*



## **SHORELINE MASTER PROGRAMS**

*Adopted and Updated by Each City*



# Shoreline Management Act

- Passed in 1971, updated in 2003
- Manages and protects the state's shoreline resources by planning for reasonable and appropriate uses
- Governs use and development of shorelines of the state

# Shoreline Master Programs

- Implement the SMA in the Cities
- Establishes goals, policies, and regulations for shoreline use, protection, and development
- SMP adoption dates:
  - Aberdeen in 1975
  - Cosmopolis in 1974
  - Hoquiam in 1976

# Purpose of the SMP Update

- 2003 State rules require update
- Roles of the Cities and Ecology
- All 262 SMPs in Washington are being updated (139 approved to date)

# Major Update Requirements

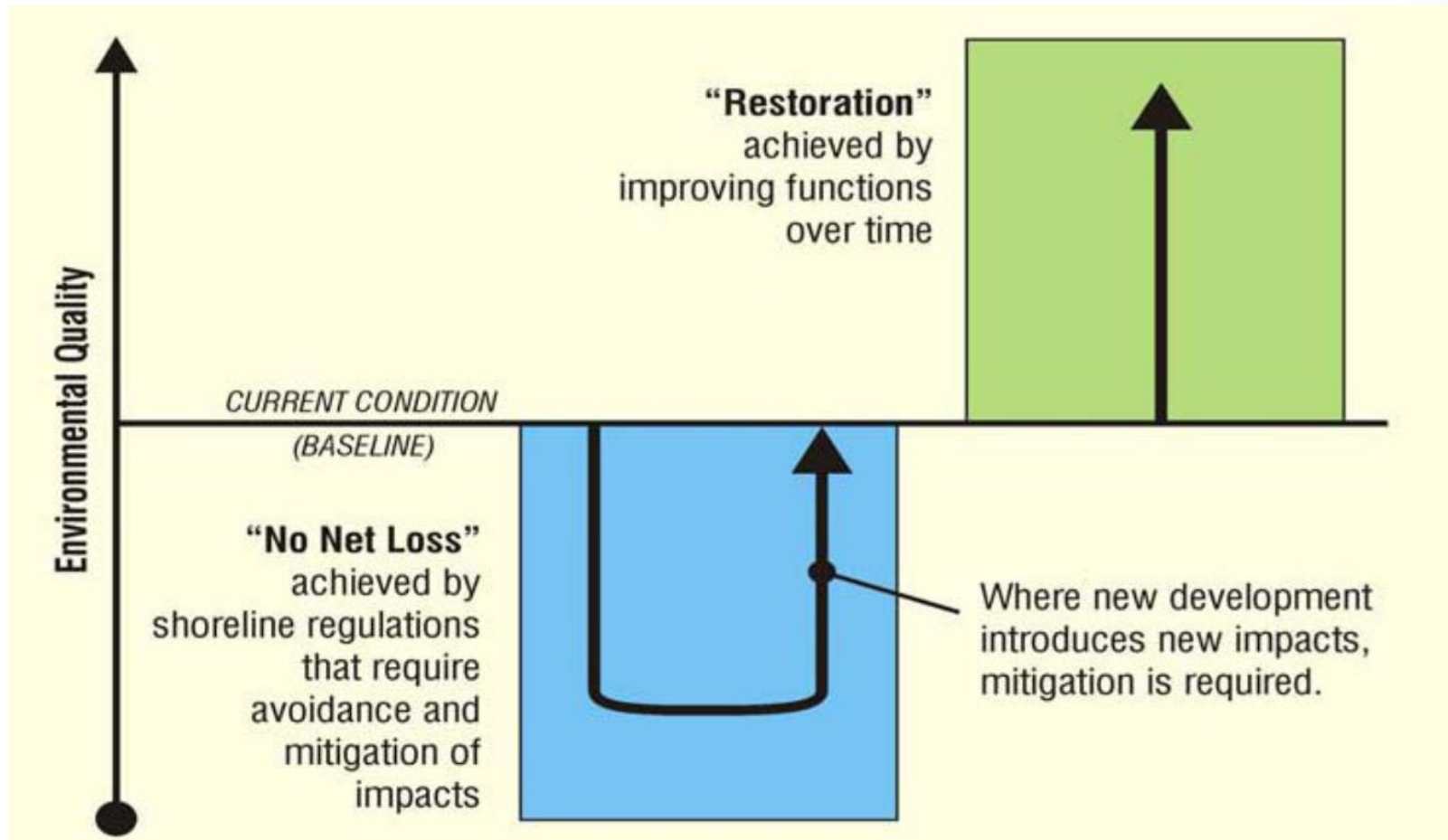
- New requirements for “no net loss” and restoration planning
- Preserve and enhance public access
- Give preference to “water-dependent uses”
- Public input throughout update process



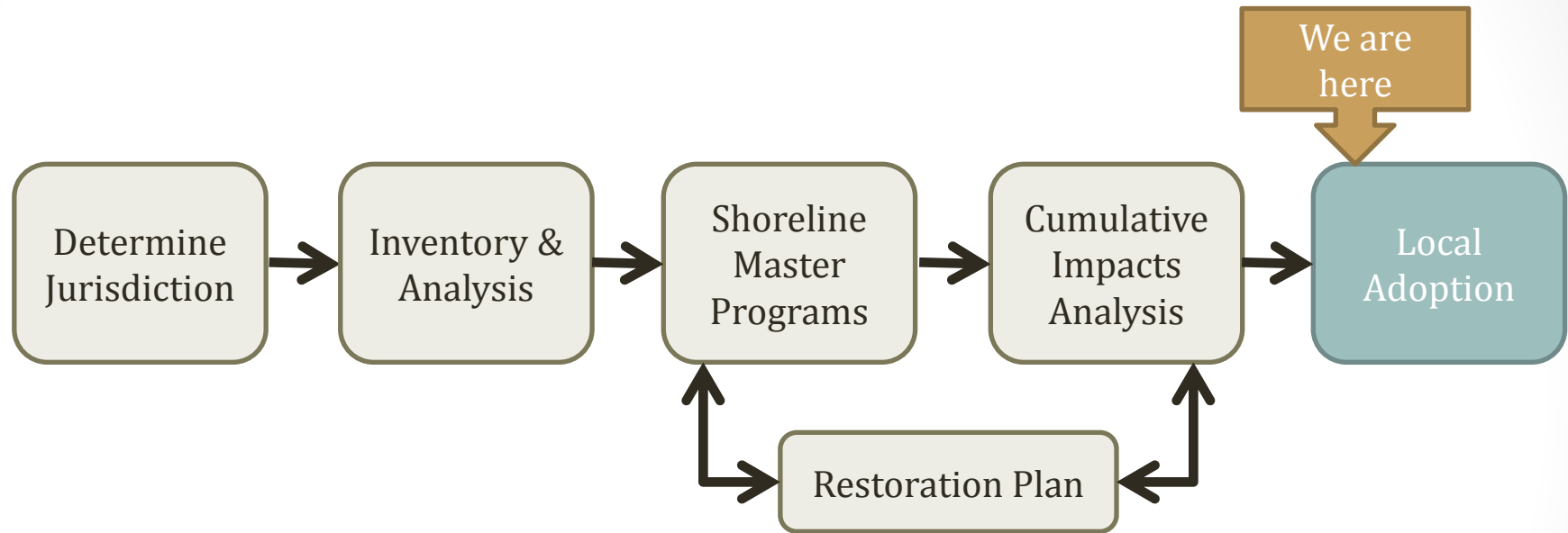
# SMP Update Baseline

- Updated SMPs will:
  - Apply to future development
  - Not apply retroactively
  - Not require change to existing land uses or development

# No Net Loss & Restoration



# Required SMP Update Steps



2013

2014

2015

2016

Public Participation

Ecology Review and Adoption

# Shoreline Jurisdiction

- **Marine waters** (Grays Harbor)
- **Lakes and reservoirs** greater than 20 acres (Lake Aberdeen)

# Shoreline Jurisdiction

- **Rivers and creeks** - mean annual flow > 20 cubic feet per second:
  - Chehalis River
  - East Fork Hoquiam River
  - Hoquiam River
  - Little Hoquiam River
  - Wishkah River
  - Wynoochee River

# Shoreline Jurisdiction

- **Rivers and creeks** - mean annual flow > 20 cubic feet per second:
  - Charley Creek
  - Fry Creek
  - Newskah Creek
  - Wedekind Creek

# Shoreline Jurisdiction

- Lands extending **200-feet landward** from the ordinary high water mark
- Adopted FEMA **floodways**
- **Contiguous floodplains** extending 200-feet landward from floodways
- **Associated wetlands**

Combined there are approximately 39 miles of shoreline and more than 5,296 acres of water



# Shoreline Jurisdiction

## Legend

 Final Shoreline Jurisdiction

 Reaches

 City Boundary

 SMA Rivers

 SMA Lakes

 Highways

0 0.25 0.5 Miles

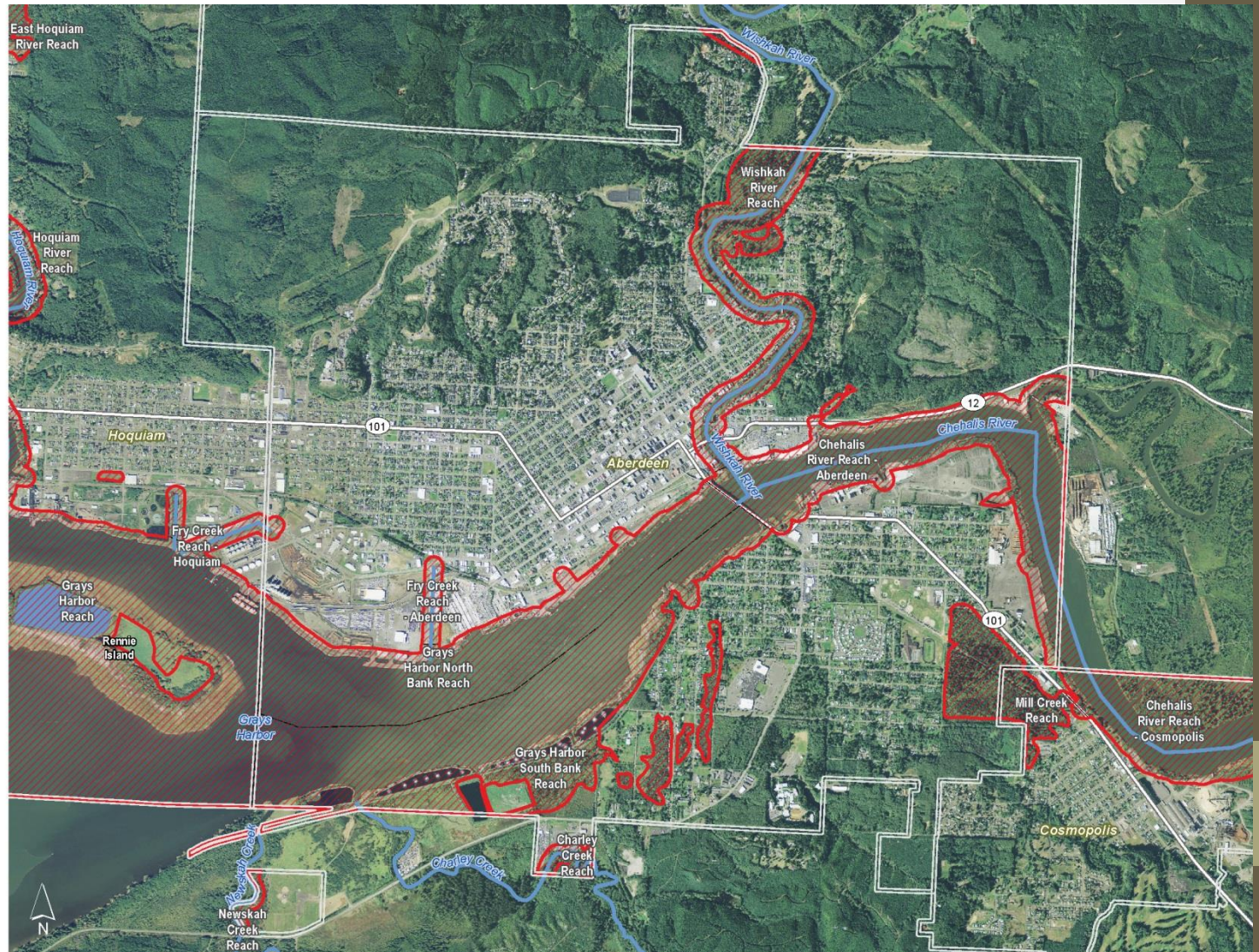
1:27,000

Area of interest in red



Source: Grays Harbor County, USFWS NWI (2011), FEMA Preliminary DFIRM (2013), WA DNR, WSDOT, DOE, NRCS NAIP (2013)

Shoreline jurisdiction boundaries depicted on this map are approximate. They have not been formally delineated or surveyed and are intended for planning purposes only. Additional site-specific evaluation may be needed to confirm/verify information shown on this map.





# Shoreline Jurisdiction

## Legend

-  Final Shoreline Jurisdiction
-  Reaches
-  City Boundary
-  SMA Rivers
-  SMA Lakes
-  Highways

0 0.25 0.5 Miles

1:10,000

Area of interest in red



Source: Grays Harbor County, USFWS NWI (2011), FEMA Preliminary DFIRM (2013), WA DNR, WSDOT, DOE, NRCS NAIP (2013)

Shoreline jurisdiction boundaries depicted on this map are approximate. They have not been formally delineated or surveyed and are intended for planning purposes only. Additional site-specific evaluation may be needed to confirm/verify information shown on this map.





# Shoreline Jurisdiction

## Legend

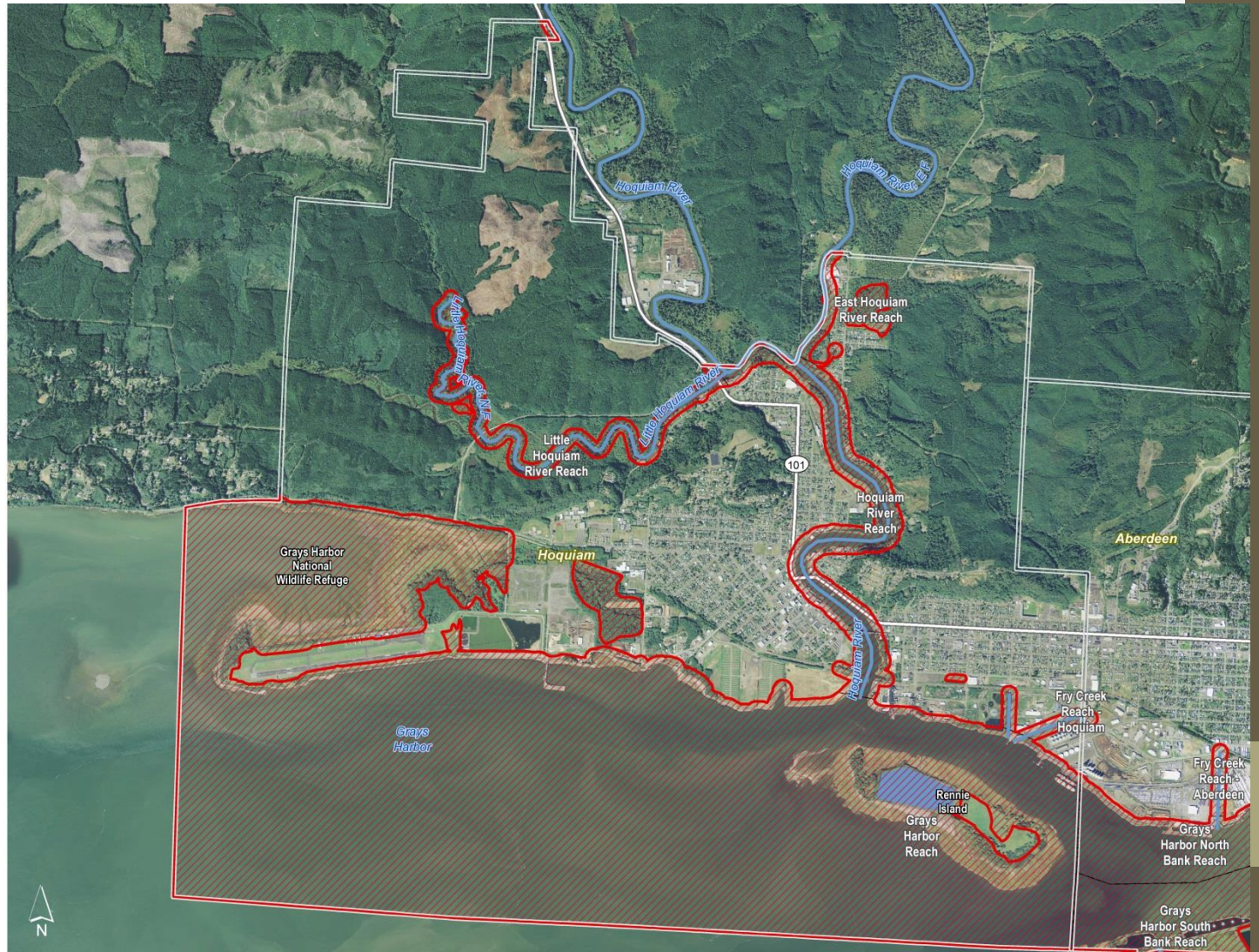
-  Final Shoreline Jurisdiction
-  Reaches
-  City Boundary
-  SMA Rivers
-  SMA Lakes
-  Highways

0 0.25 0.5 Miles  
1:33,000



Source: Grays Harbor County, USFWS NW (2011), FEMA Preliminary DFIRM (2013), WA DNR, WSDOT, DOE, NRCS NAIP (2013)

Shoreline jurisdiction boundaries depicted on this map are approximate. They have not been formally delineated or surveyed and are intended for planning purposes only. Additional site-specific evaluation may be needed to confirm/verify information shown on this map.



# Public Participation

- Guided by the Public Participation Plan
- Input received through:
  - Public notices
  - Open House held on November 5, 2014
  - Citizen Advisory Committee (CAC) and the Technical Advisory Committee (TAC) meetings 2014 – 2015
  - SMP Update website

# Shoreline Inventory and Analysis

- Using available data, analyzed:
  - Shoreline functions
  - Shoreline uses
  - Public access
- Described existing conditions and development patterns
- Established the baseline for “No Net Loss” and environment designations

# Shoreline Master Program

- Establishes goals, policies, and regulations for uses and modifications in the shoreline
- Regulates development and activity in the shoreline

# Updates to SMPs

Key areas that have been updated:

1. Shoreline Environment Designations
2. Critical Areas Regulations
3. Shoreline Buffers
4. Shoreline Uses and Modifications



# Shoreline Environments

- Regulate development and protect the character of a shoreline
- Function similar to a land use designation or a zoning district
- Specific management policies and regulations for each shoreline environment designation
- Apply to all uses allowed within each shoreline environment designation

# Shoreline Environments

Aberdeen | Cosmopolis | Hoquiam  
Shoreline Master Program

## Shoreline Environment Designations

Figure 17.2: Aberdeen

Date: 6/30/2015

### Shoreline Environment Designation

- High Intensity
- Shoreline Residential
- Urban Conservancy
- Aquatic
- Reaches
- City Boundary
- SMA Rivers
- SMA Lakes
- Highways

0 0.25 0.5 Miles

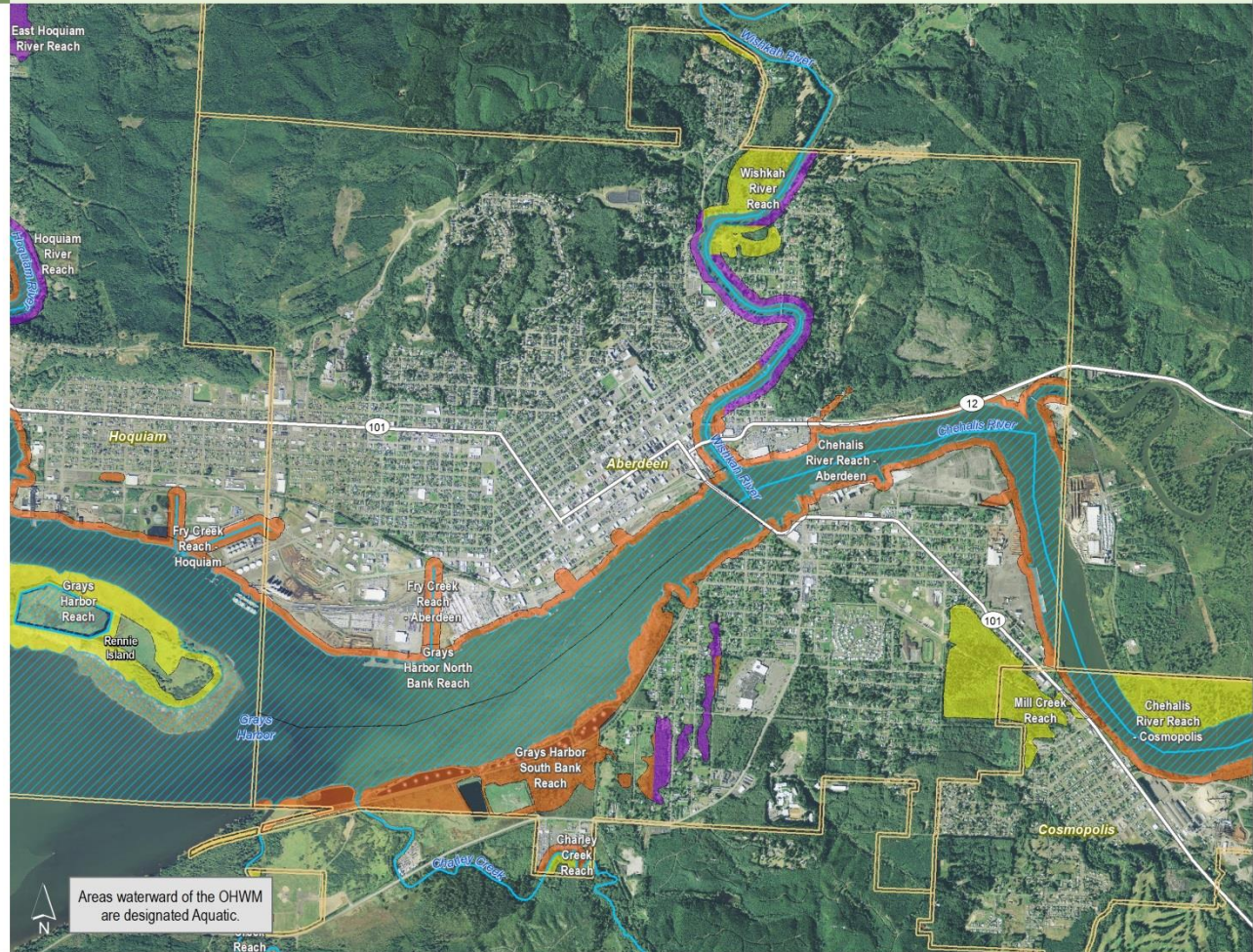
1:27,000

Area of interest in red



Source: Grays Harbor County, USFWS NWI (2011), FEMA Preliminary DFIRM (2013), WA DNR, WSDOT, DOE, NRCS NAIP (2013)

Shoreline jurisdiction boundaries depicted on this map are approximate. They have not been formally delineated or surveyed and are intended for planning purposes only. Additional site-specific evaluation may be needed to confirm/verify information shown on this map.





# Shoreline Environments



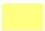






Aberdeen | Cosmopolis | Hoquiam  
Shoreline Master Program

## Shoreline Environment Designations

Figure 17.3: Aberdeen

Date: 6/30/2015

### Shoreline Environment Designation

-  High Intensity
-  Shoreline Residential
-  Urban Conservancy
-  Aquatic
-  Reaches
-  City Boundary
-  SMA Rivers
-  SMA Lakes
-  Highways

0 0.25 0.5 Miles

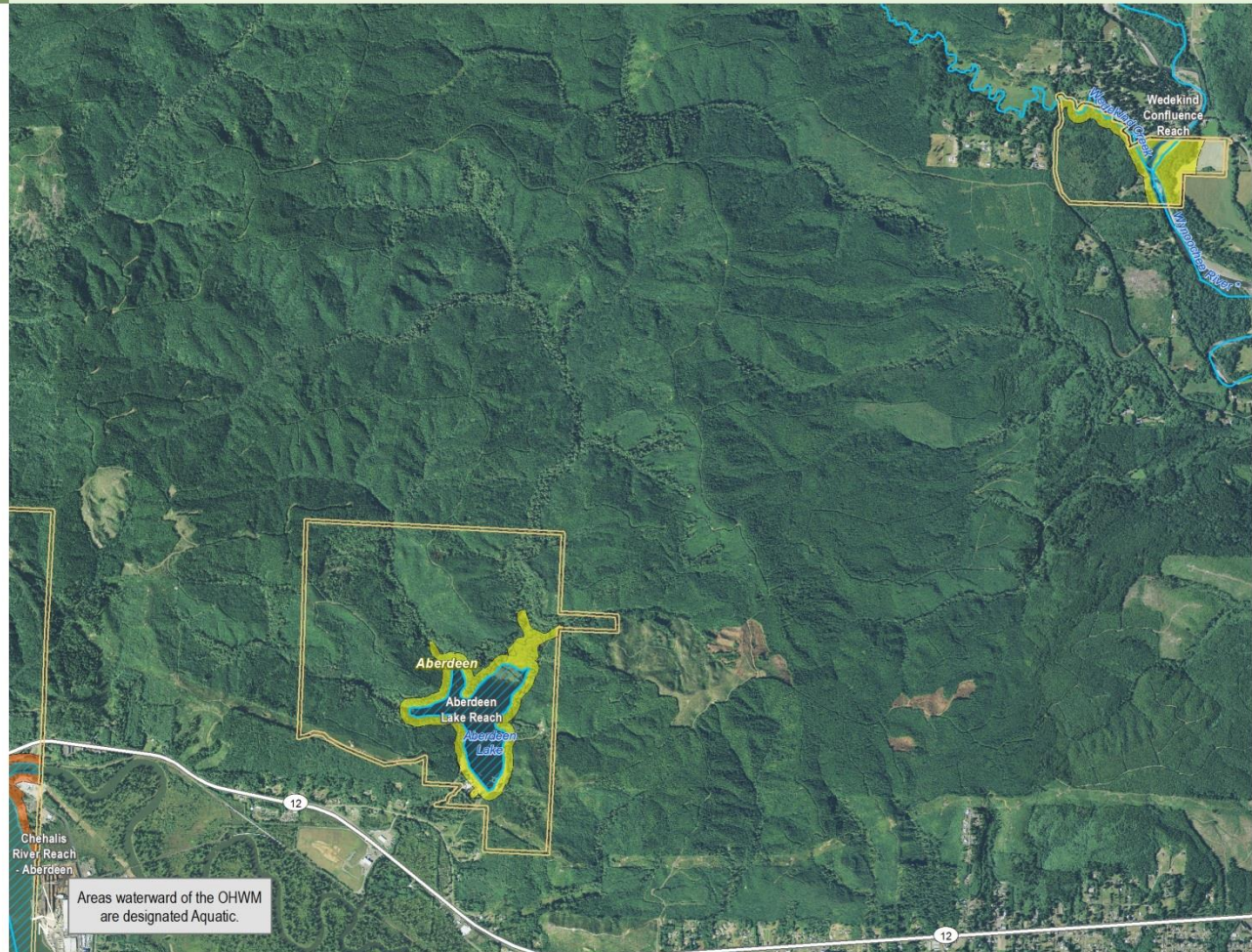
1:24,000

Area of interest in red



Source: Grays Harbor County, USFWS NWI (2011), FEMA Preliminary DFIRM (2013), WA DNR, WSDOT, DOE, NRCS NAIP (2013)

Shoreline jurisdiction boundaries depicted on this map are approximate. They have not been formally delineated or surveyed and are intended for planning purposes only. Additional site-specific evaluation may be needed to confirm inventory information shown on this map.





# Shoreline Environments

Aberdeen | Cosmopolis | Hoquiam  
Shoreline Master Program

## Shoreline Environment Designations

Figure 17.4: Cosmopolis

Date: 12/14/2015

### Shoreline Environment Designation

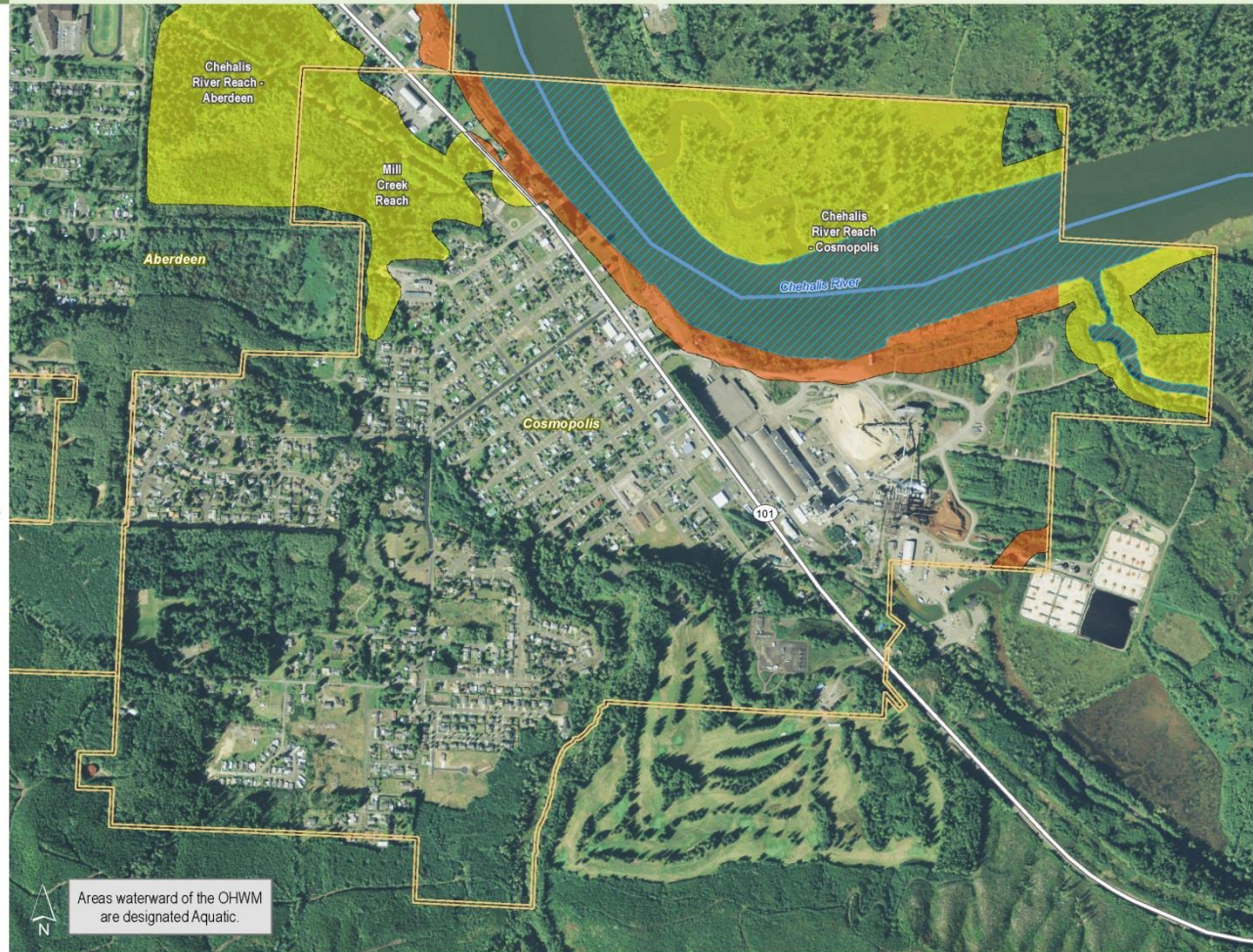
-  High Intensity
-  Urban Conservancy
-  Aquatic
-  Reaches
-  City Boundary
-  SMA Rivers
-  SMA Lakes
-  Highways

0 0.25 0.5 Miles



Source: Grays Harbor County, USFWS NMI (2011), FEMA Preliminary DFIRM (2013), WADNR, WSDOT, DOE, NRCS NAIP (2013)

Shoreline jurisdiction boundaries depicted on this map are approximate. They have not been formally delineated or surveyed and are intended for planning purposes only. Additional site-specific evaluation may be needed to confirm inventory information shown on this map.





# Shoreline Environments

Aberdeen | Cosmopolis | Hoquiam  
Shoreline Master Program

## Shoreline Environment Designations

Figure 17.1: Hoquiam

Date: 10/30/2015

### Shoreline Environment Designation

- High Intensity
- Shoreline Residential
- Urban Conservancy
- Reaches
- City Boundary
- SMA Rivers
- SMA Lakes
- Highways

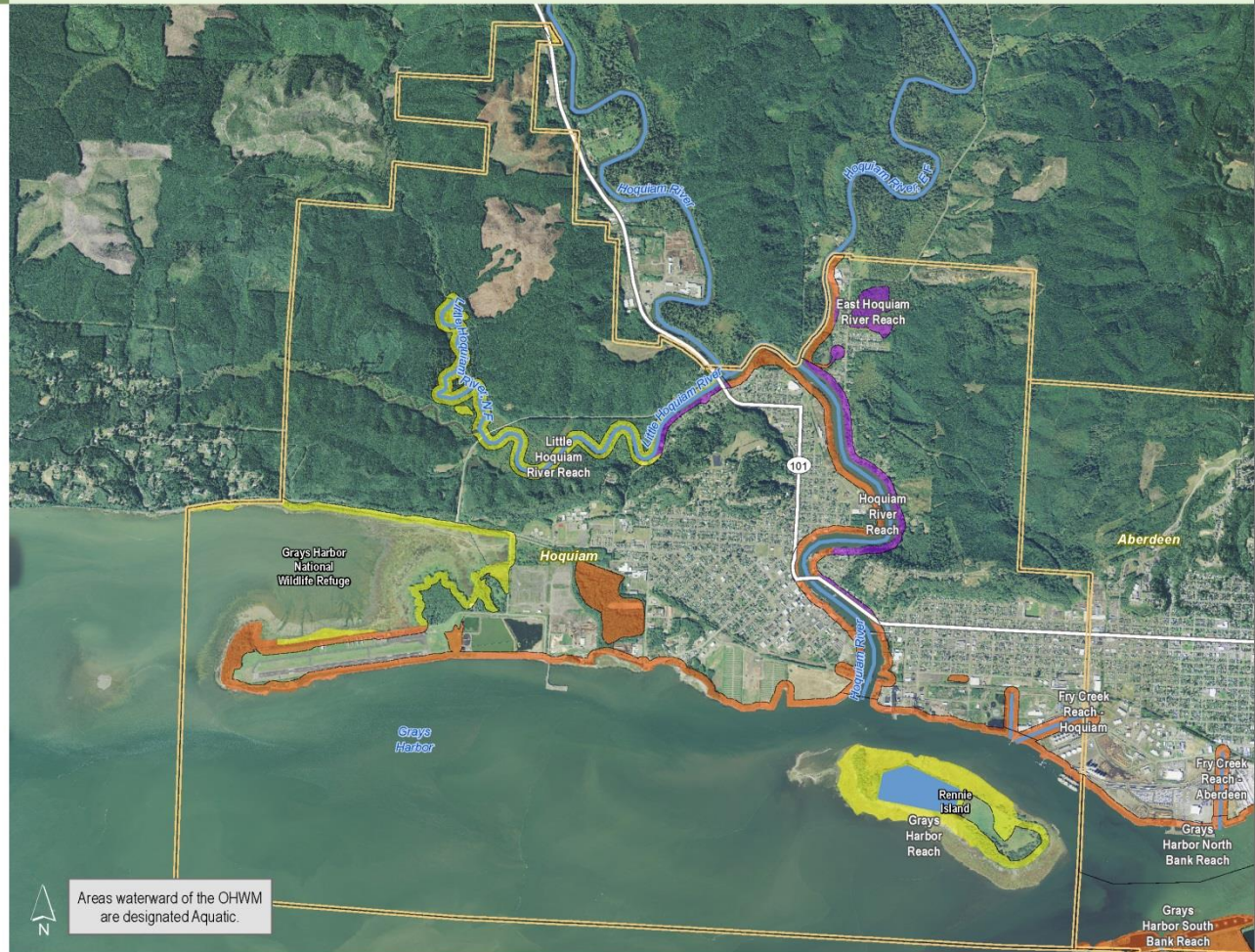
0 0.25 0.5 Miles

1:33,000



Source: Grays Harbor County, USFWS NWI (2011), FEMA Preliminary DFIRM (2013), WA DNR, WSDOT, DOE, NRCS NAIP (2013)

Shoreline jurisdiction boundaries depicted on this map are approximate. They have not been formally delineated or surveyed and are intended for planning purposes only. Additional site-specific evaluation may be needed to confirm inventory information shown on this map.



Areas waterward of the OHWM are designated Aquatic.

# Bulk and Dimensional Rules

The shoreline environment designations determine these bulk and dimensional regulations:

1. Shoreline Buffers
2. Shoreline Structural Setbacks
3. Maximum heights

# Critical Areas Regulations

New SMP Appendix 2 addresses:

1. Wetlands
2. Critical Aquifer Recharge Areas
3. Frequently Flooded Areas
4. Geologically Hazardous Areas
5. Fish and Wildlife Habitat Conservation Areas

# Critical Areas Regulations

Important changes include:

1. Updated definitions, as needed
2. 'Reasonable use' and 'Performance based critical area standards' are now 'shoreline variances'
3. Appeals go to Shorelines Hearings Board, not hearing examiner
4. Confirmed that all projects must meet critical areas regulations

# Critical Areas Regulations

Important changes include:

5. Updated wetland delineation methods and the wetland rating system to reflect current state law
6. Updated wetland buffers
7. Revised wetland mitigation requirements
8. Added requirements for critical area reports

# Shoreline Buffers

1. Updated shoreline buffers based on the three Cities' current critical areas regulations (SMP Appendix 2)
2. Shoreline buffers established by:
  - Shoreline environment designation
  - Specific use
  - Whether water-dependent, water-related, or water-enjoyment, or non-water-oriented



# Shoreline Uses and Modifications

Other key areas in the SMPs that have been updated:

- Allowed shorelines uses
- Shoreline height standards
- Boating and water access facilities
- Industrial and port development
- Shoreline modifications
- Shoreline stabilization
- Grading, clearing, and fill

# Shoreline Uses

The shoreline environment designations establish what uses will be:

1. Permitted outright
2. Need a shoreline conditional use permit
3. Prohibited

# Restoration Plan

- Voluntary actions taken over time to improve shoreline functions
- Establishes objectives for shoreline habitat protection and conservation
- Identifies programmatic restoration opportunities
- Identifies current and planned restoration projects

# Next Steps

## Task 10 – Local SMPs Adoption Process

- March 2, 2016 – City Councils' Joint Workshop
- March – April 2016 – SEPA Review
- April – May 2016 – Three City Councils hold meetings and hearings to discuss and adopt draft SMPs
- June 2016 – Transmit draft SMPs to Ecology for state approval process

# Questions?

## Project Contacts:

- Lisa Scott, City of Aberdeen, [lscott@aberdeenwa.gov](mailto:lscott@aberdeenwa.gov)
- Darrin Raines, City of Cosmopolis, [draines@cosmopolis.us.com](mailto:draines@cosmopolis.us.com)
- Brian Shay, City of Hoquiam, [bshay@cityofhoquiam.com](mailto:bshay@cityofhoquiam.com)
- Brad Medrud, AHBL, Inc., [bmedrud@ahbl.com](mailto:bmedrud@ahbl.com)
- Kim Van Zwahlenburg, Dept. of Ecology, [kim.vanzwahlenburg@ecy.wa.gov](mailto:kim.vanzwahlenburg@ecy.wa.gov)

## Websites:

SMPs Update Project Website:

[https://www.ezview.wa.gov/site/alias\\_\\_1789/35000/default.aspx](https://www.ezview.wa.gov/site/alias__1789/35000/default.aspx)

Ecology SMP Website:

<http://www.ecy.wa.gov/programs/sea/shorelines/index.html>